

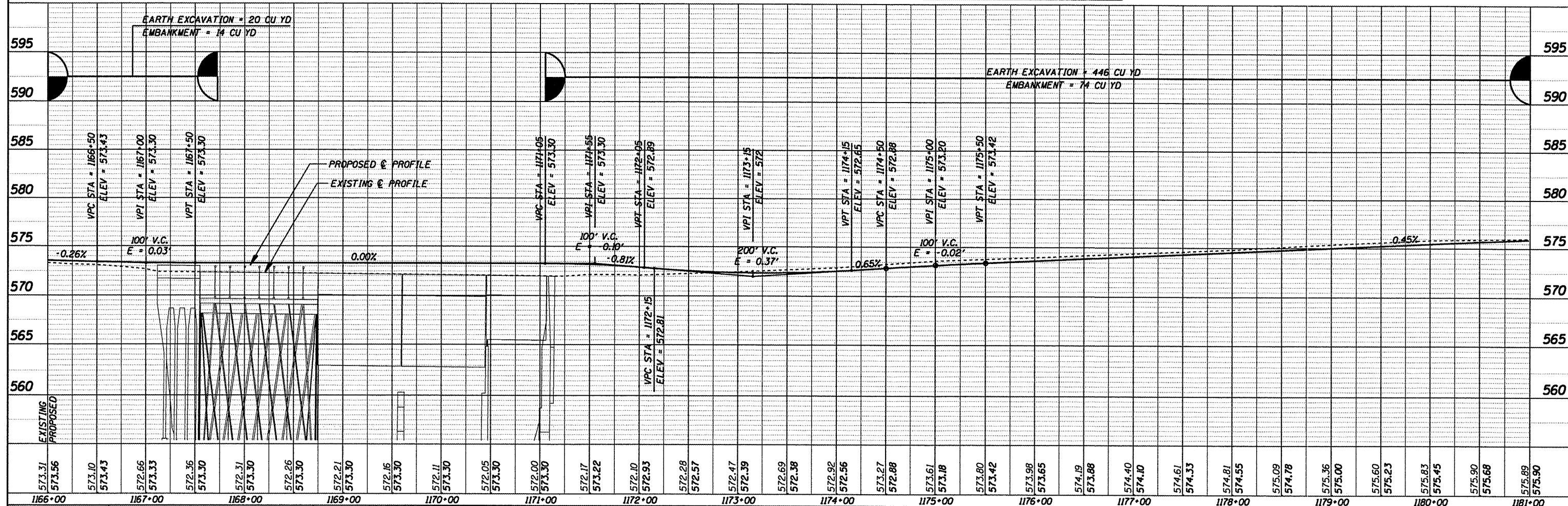
B.M.#20 CHISELED "□" S.W. WINGWALL
R.R. BRIDGE S.W. ABUT. (SPRING CREEK)
7.5' LT. STA. 1167+11.4
ELEV. = 572.87

PAVING OMISSIONS
STA 1167+07.39 TO STA 1171+07.06 (BRIDGE) SEC 30, T16N, R5W, 3RD PM

B.M.#21 CHISELED "□" N.W. COR.
R.R. BRIDGE N.W. ABUT. (SPRING CREEK)
7.6' LT. STA. 1171+07.0
ELEV. = 571.77

DATE	
BY	
PLAN	
NO.	
REVISIONS	
CHECKED	
ALIGNED	
FILE NAME	

DATE	
BY	
PROFILE	
NO.	
REVISIONS	
CHECKED	
STRUCTURE	
NOTATION	



1166+00	1167+00	1168+00	1169+00	1170+00	1171+00	1172+00	1173+00	1174+00	1175+00	1176+00	1177+00	1178+00	1179+00	1180+00	1181+00
573.31	573.56	573.10	573.43	572.66	573.33	572.36	573.30	572.31	573.30	572.26	573.30	572.21	573.30	572.16	573.30
573.17	573.22	572.10	572.93	572.28	572.57	572.47	572.39	572.69	572.38	572.92	572.56	573.27	572.88	573.61	573.18
573.80	573.42	573.98	573.65	574.19	573.88	574.40	574.10	574.61	574.33	574.81	574.55	575.09	574.78	575.36	575.00
575.60	575.23	575.83	575.45	575.90	575.68	575.89	575.90								

CUMMINS ENGINEERING CORPORATION

JOB = 2192
FILE NAME = p8p1178.dgn
PLOT SCALE = 100.000' / IN.
PLOT DATE = 6/9/2009

DESIGNED - NAK
DRAWN - AJH
CHECKED - NAK
DATE - 1/22/2009

REVISED -
REVISED -
REVISED -
REVISED -

SANGAMON VALLEY TRAIL

PLAN & PROFILE

SCALE: SHEET NO. OF SHEETS STA. 1166+00 TO STA. 1181+00

F.A.S. RTE.	SECTION	COUNTY	TOTAL SHEETS	SHEET NO.
	05-00173-00-BT	SANGAMON	173	37
CONTRACT NO. 93522				
FED. ROAD DIST. NO. ILLINOIS FED. AID PROJECT				