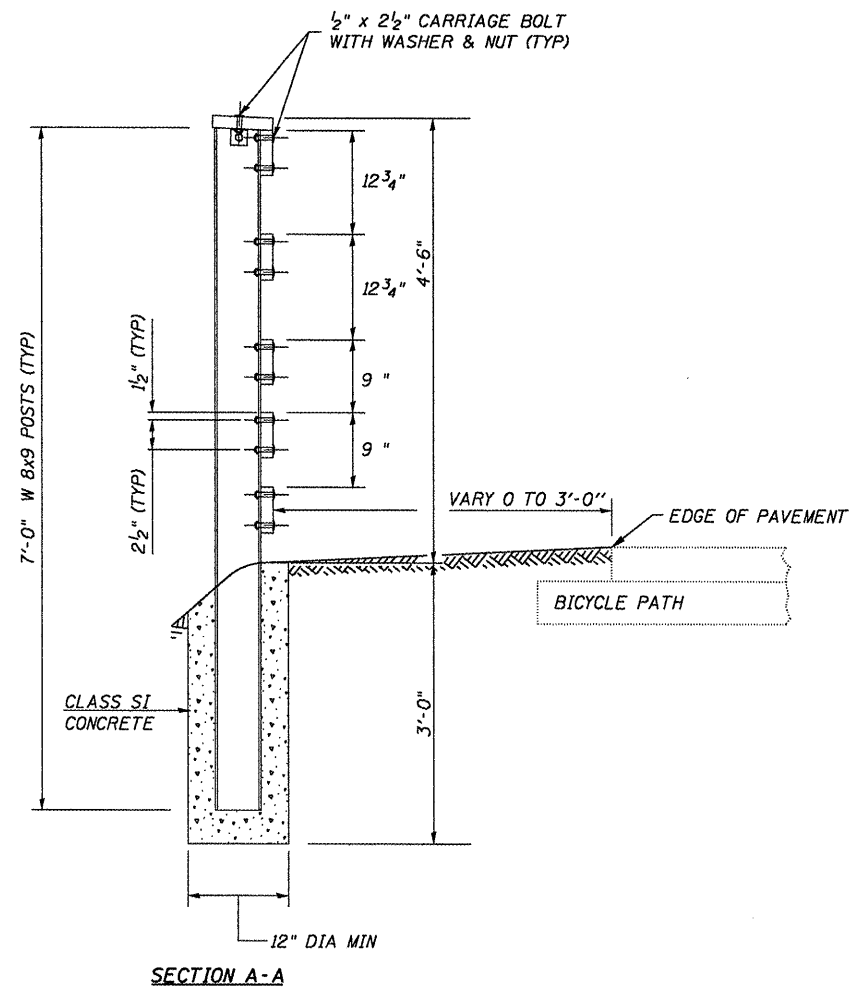
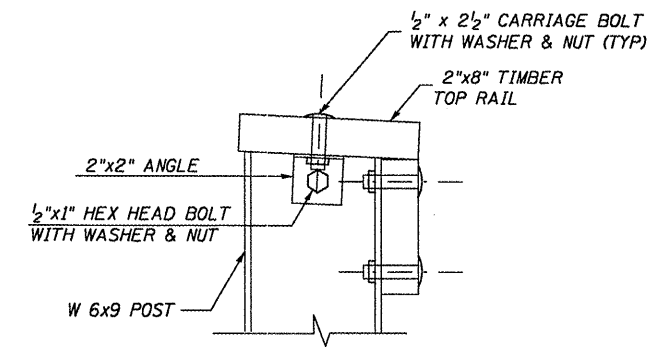


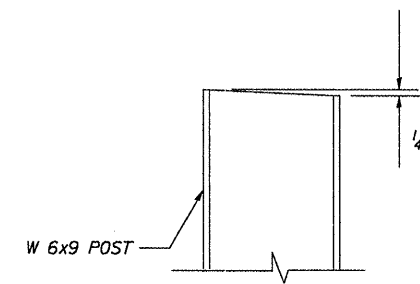
ELEVATION VIEW



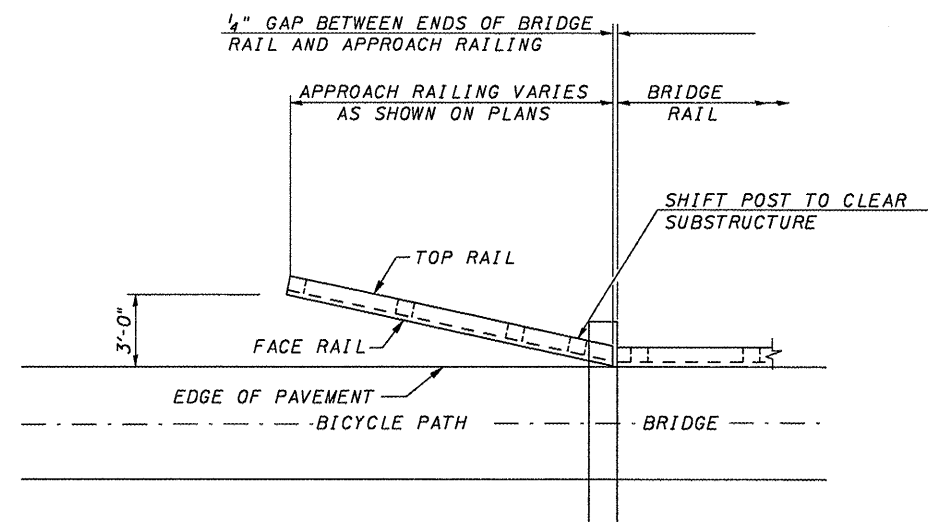
SECTION A-A



TOP RAIL CONNECTION DETAIL



TOP OF POST DETAIL



PLAN VIEW

1. STEEL POSTS SHALL BE AS SPECIFIED IN ARTICLE 1006.23.
2. ALL HARDWARE SHALL BE AS SPECIFIED IN ARTICLE 1006.25.
3. TIMBER RAILS SHALL BE TREATED SOUTHERN PINE AS SPECIFIED IN ARTICLE 1007.03
4. STAGGER ALTERNATING BUTT ENDS ON FACE RAIL AND TOP RAIL. CENTER ALL BUTT END JOINTS ON THE POSTS.
5. CUT ENDS OF TOP RAIL AND FACE RAILS TO MATCH BRIDGE RAIL

CUMMINS
ENGINEERING
CORPORATION

JOB = 2192
FILE NAME = 2192details.dgn
PLOT SCALE = 1/8" = 1'-0"
PLOT DATE = 6/8/2009

DESIGNED - NAK
DRAWN - AJH
CHECKED - NAK
DATE - 1/22/2009

REVISED -
REVISED -
REVISED -
REVISED -

SANGAMON VALLEY TRAIL

TIMBER BRIDGE APPROACH RAILING

F.A.S. RTE.	SECTION	COUNTY	TOTAL SHEETS	SHEET NO.
	05-00173-00-BT	SANGAMON	173	65
CONTRACT NO.				
FED. ROAD DIST. NO. ILLINOIS FED. AID PROJECT				

09522