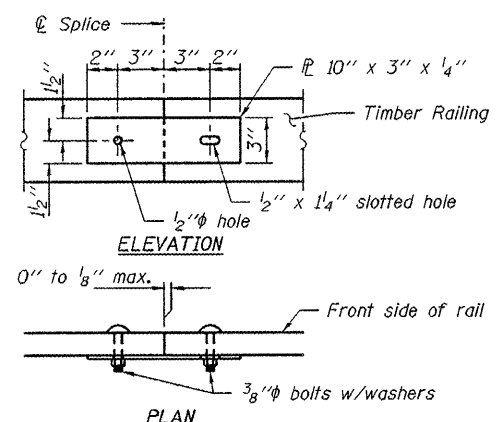


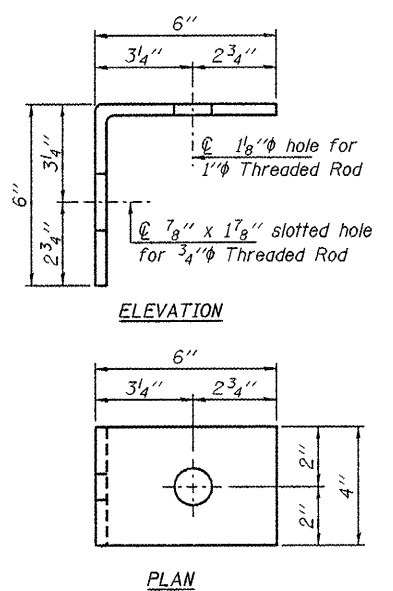
SECTION A-A



RAIL SPLICE DETAIL (Typ.)

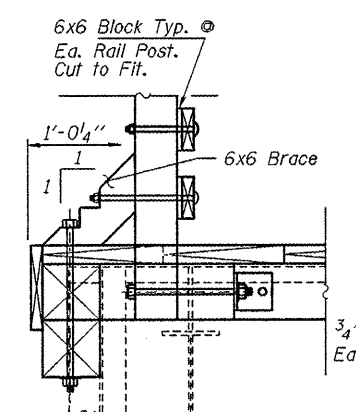
Note: Minimize splices in rails and top plate. Where possible span 3 rails posts, as per suggested panel spacing.

DESIGNED - S.M.S.
CHECKED - S.W.M.
DRAWN - D.A.B.
CHECKED - S.M.S.

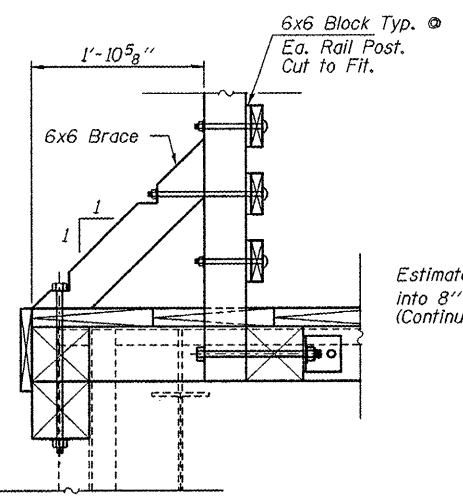


ANGLE DETAIL

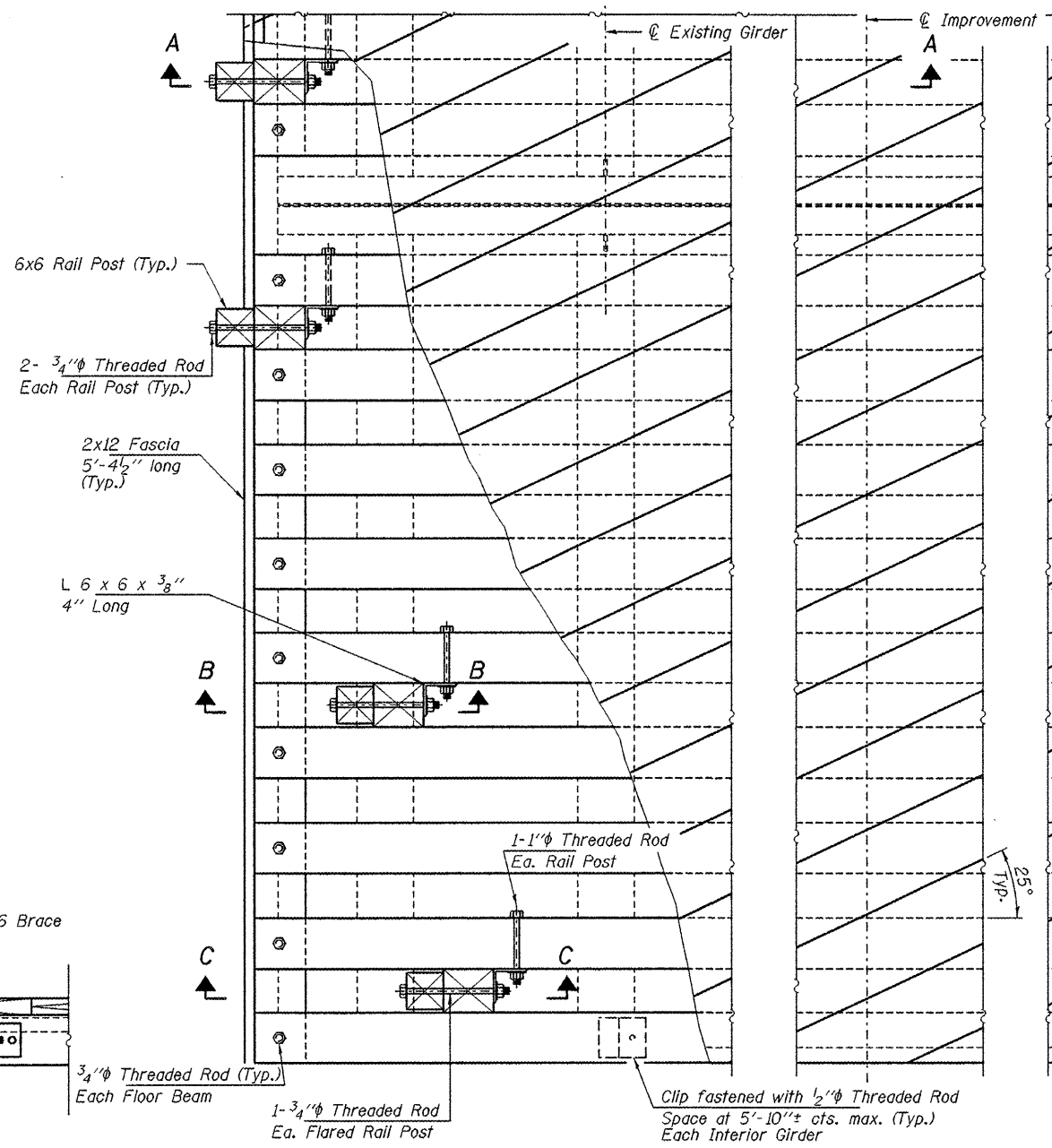
Note: Weight of Angles and Flange Clips Included for payment as Hardware.



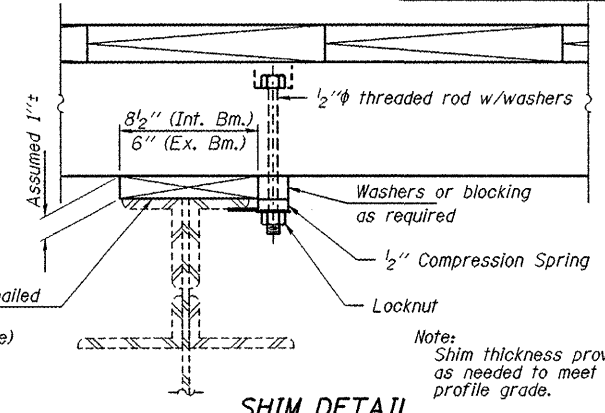
SECTION B-B



SECTION C-C



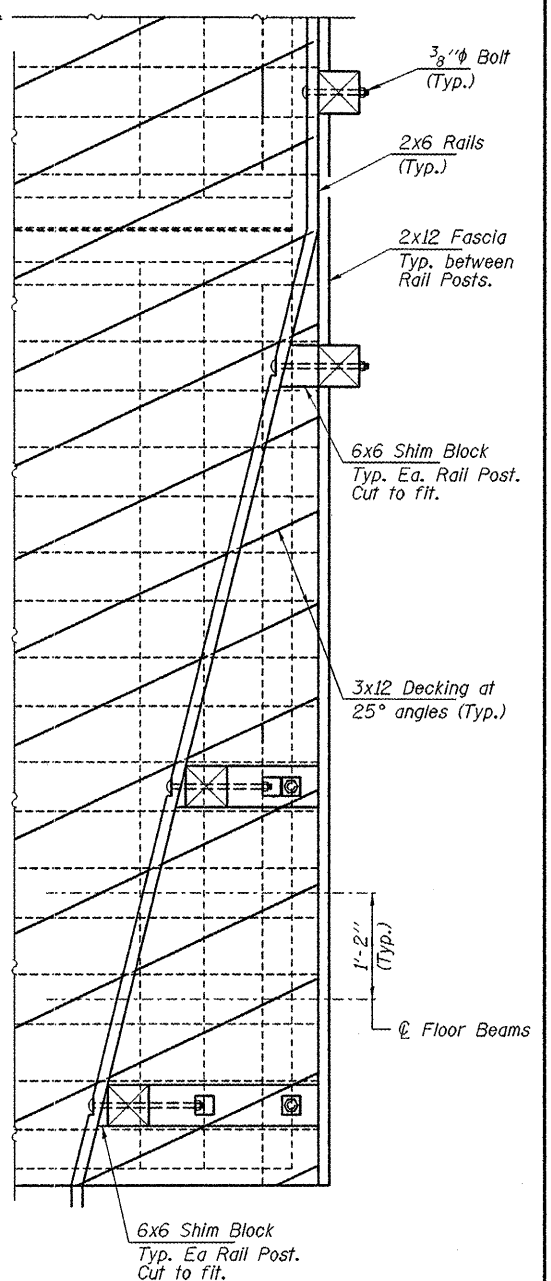
DECK DETAIL PLAN



SHIM DETAIL

Estimated shim to be toe nailed into 8 inch x 8 inch timbers (Continuous along top flange)

Note: Shim thickness provided as needed to meet proposed profile grade.



FLANGE CLIP DETAIL

(5'-10 inch cts. max spacing) Alternate flange clip allowed by approval of Engineer.

DECK & RAILING DETAILS SPAN 1 SVT BRIDGE NO. 14

HAMPTON, LENZINI & RENWICK, INC. CIVIL & STRUCTURAL ENGINEERS LAND SURVEYORS 3085 STEVENSON DRIVE, SUITE 201 SPRINGFIELD, ILLINOIS 62703 (217) 646-3400 PROJECT NUMBER: 12-R4-0080 DATE: 02/27/09	SHEET NO. 6	T.R.	SECTION	COUNTY	TOTAL SHEETS	SHEET NO.
	13 SHEETS		05-00713-00-BT	SANGAMON	173	99
			S.V.T. OVER SPRING CREEK TRIB.	CONTRACT NO.		
			FED. ROAD DIST. NO.	ILLINOIS	FED. AID PROJECT	93522