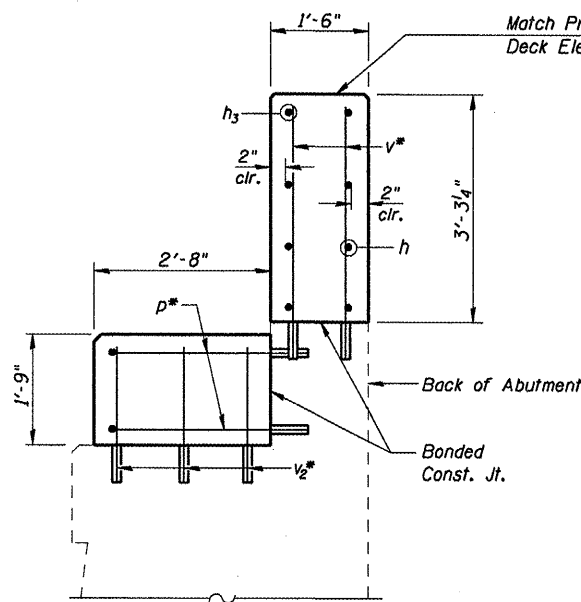
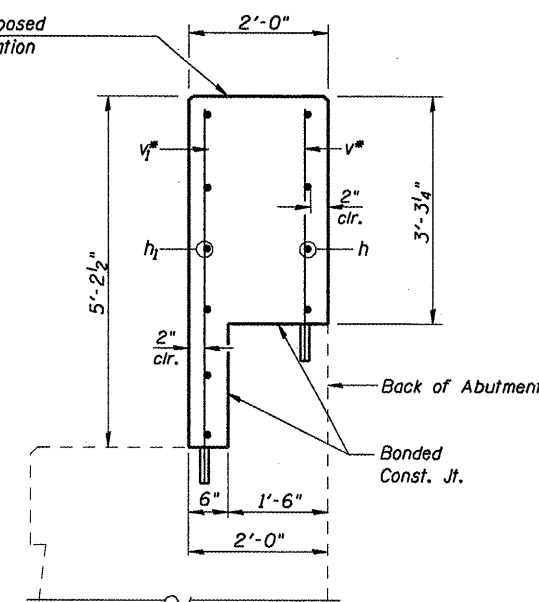


PLAN

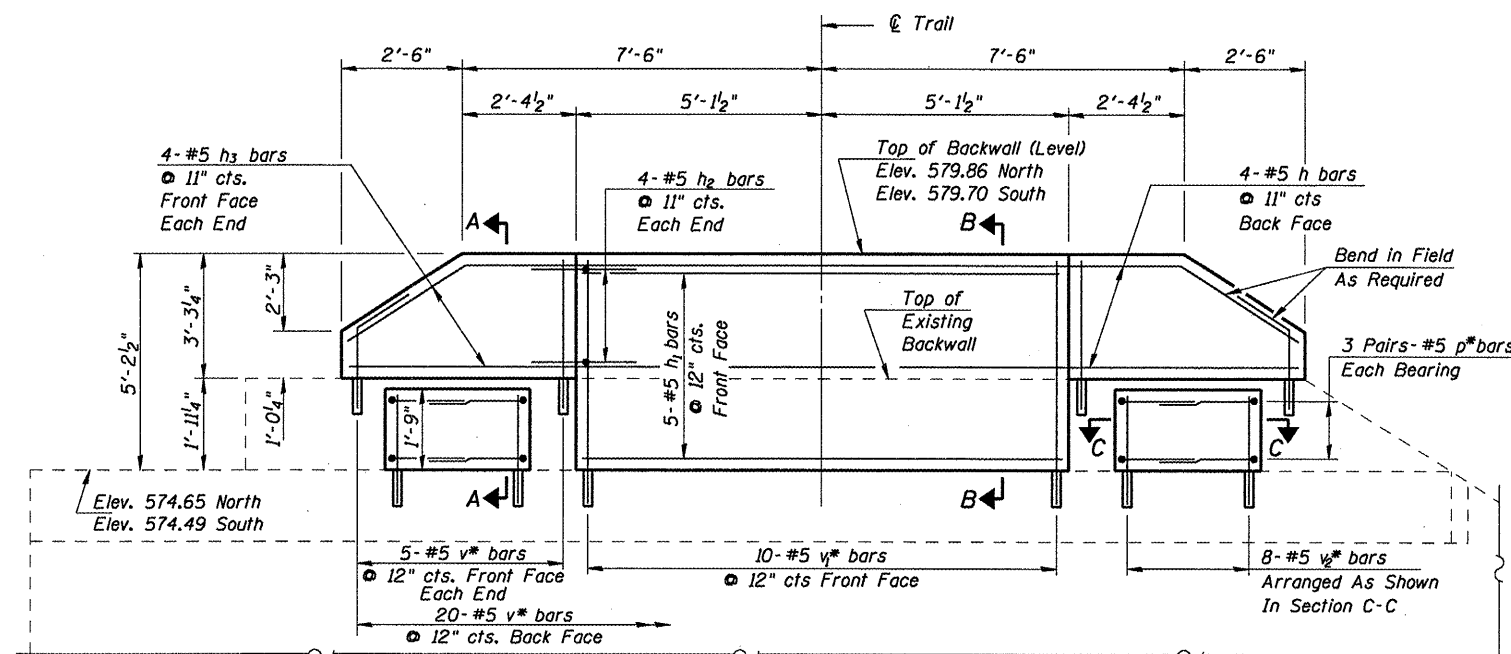
(North Abutment shown, South Abutment similar about opposite hand)



SECTION A-A



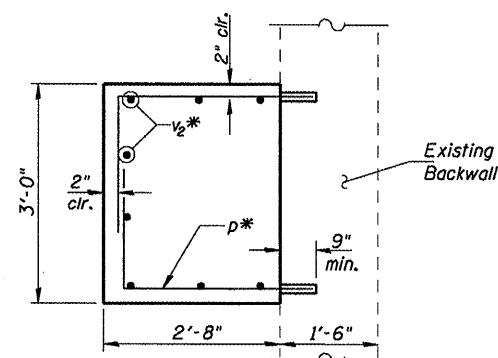
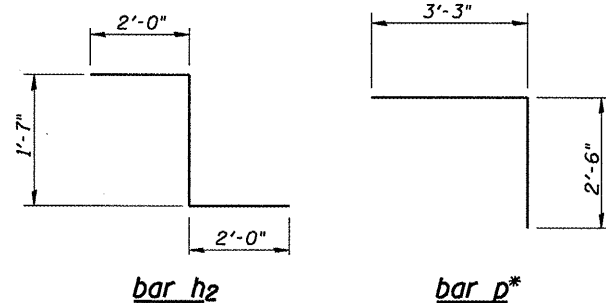
SECTION B-B



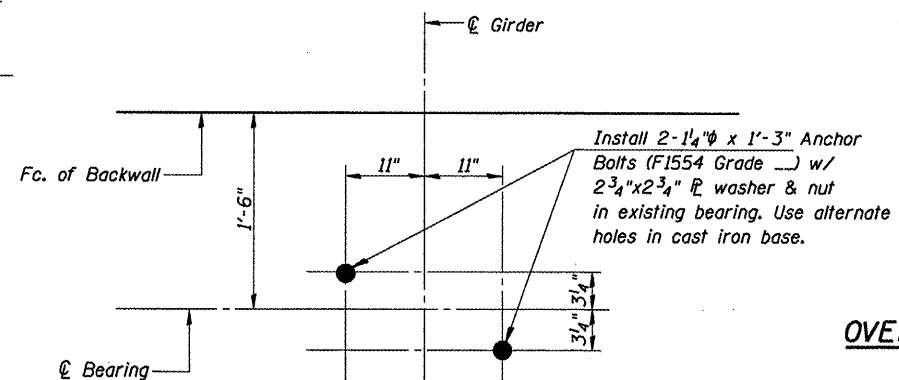
ELEVATION

TABLE OF PEDESTAL ELEVATIONS

Location	West	East
℄ Brg. N. Abut.	576.40	576.40
℄ Brg. S. Abut.	576.24	576.24



SECTION C-C



ANCHOR BOLT LAYOUT AT ABUTMENT

Match Existing Cast Iron Base at each Bearing

BILL OF MATERIAL - 2 ABUTMENTS

Bar	No.	Size	Length	Shape
h	8	#5	19'-8"	—
h1	10	#5	9'-11"	—
h2	16	#5	5'-7"	⌒
h3	16	#5	6'-8"	—
p*	24	#5	5'-9"	⌒
v*	60	#5	3'-10"	—
v1*	20	#5	5'-9"	—
v2*	32	#5	2'-4"	—
Concrete Structures		Cu. Yd.	10.8	
Reinforcement Bars, Epoxy Coated		Pound	1060	
Concrete Sealer		Sq. Ft.	330	
Anchor Bolts 1/4"		Each	8	
Structure Excavation		Cu. Yd.	7	

Note:

All bars designated with an asterisk (i.e. p*) shall be epoxy grouted in accordance with Section 584 of the Standard Specifications. Minimum embedment = 9".

All reinforcement bars shall be epoxy coated. Anchor bolts at fixed bearings may be either cast in place or installed in holes drilled after the supported member is in place.

Drilled and set anchor bolts shall be installed according to Article 521.06 of the Standard Specifications.

**ABUTMENTS
SANGAMON VALLET TRAIL
OVER JEFFERSON STREET (IL ROUTE 97)
SVT BRIDGE NO. 15
STRUCTURE NO. 084-9936**

CEC Cummins Engineering Corporation
Civil and Structural Engineering

JOB = 2192	DESIGNED M.D.C.
FILE = 2192jeff_sub	CHECKED A.A.N.
DATE = 10/30/2009	DRAWN A.J.H.
	CHECKED M.D.C.

Sheet 6 of 6	RTE.	SECTION	COUNTY	TOTAL SHEETS	SHEET NO.
	SVT	05-00173-00-BT	SANGAMON	173	112
	SANGAMON VALLET TRAIL			CONTRACT NO.	
FED. ROAD DIST. NO. 6 ILLINOIS FED. AID PROJECT					

03522