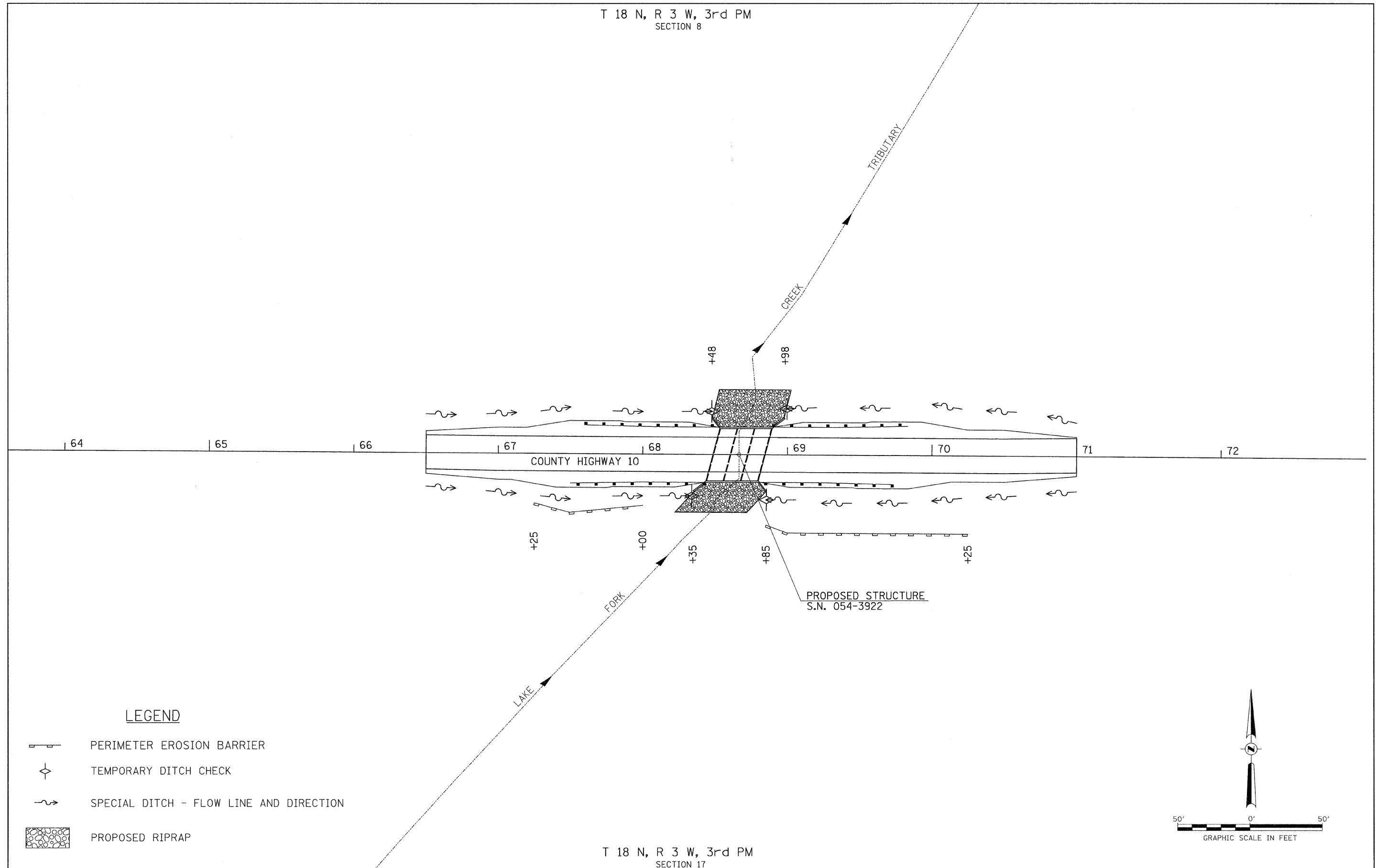


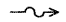



T 18 N, R 3 W, 3rd PM
SECTION 8



LEGEND

-  PERIMETER EROSION BARRIER
-  TEMPORARY DITCH CHECK
-  SPECIAL DITCH - FLOW LINE AND DIRECTION
-  PROPOSED RIPRAP

T 18 N, R 3 W, 3rd PM
SECTION 17

FILE NAME = V:\Bridges\2755-Logan\2755S001.dgn	USER NAME = cthomas	DESIGNED -	REVISED -	LOGAN COUNTY COUNTY HIGHWAY 10 OVER LAKE FORK CREEK TRIBUTARY	EROSION CONTROL PLAN	F.A.S. RTE. 566	SECTION 09-00119-00-BR	COUNTY LOGAN	TOTAL SHEETS 17	SHEET NO. 5
		DRAWN -	REVISED -			CONTRACT NO. 93525				
		CHECKED -	REVISED -			FED. ROAD DIST. NO. 7 ILLINOIS				
		DATE -	REVISED -			FED. AID PROJECT BRS-0566(107)				
					SCALE: 1" = 30'-0" SHEET NO. 1 OF 1 SHEETS STA. 66+50.00 TO STA. 71+00.00					