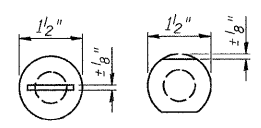
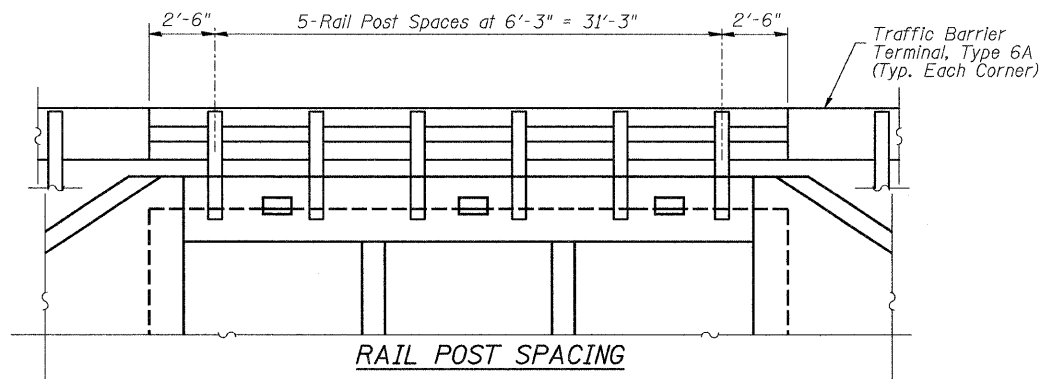


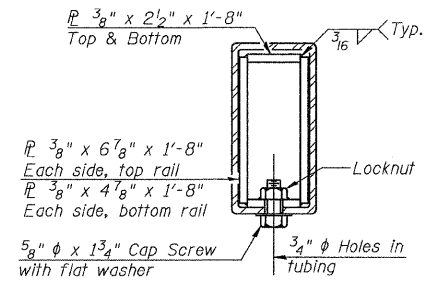
DETAIL OF 3/4"  $\phi$  ROUND HEAD BOLT



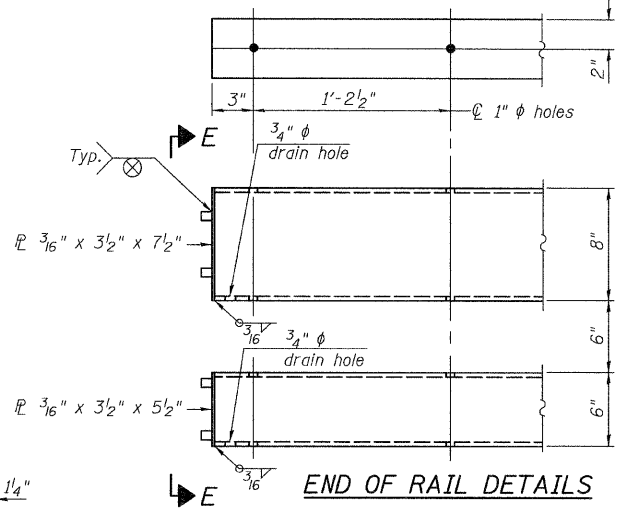
VIEW A-A  
With Slot  
Without Slot or Recess



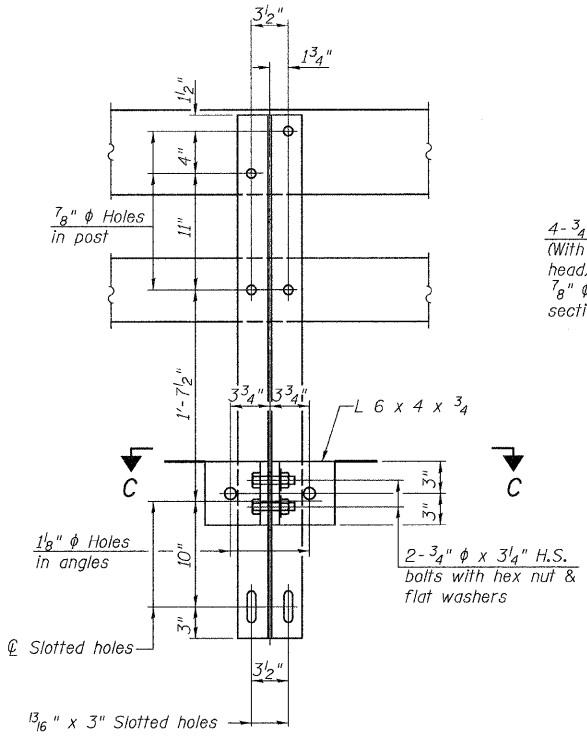
RAIL POST SPACING



SECTION AT RAIL SPLICE

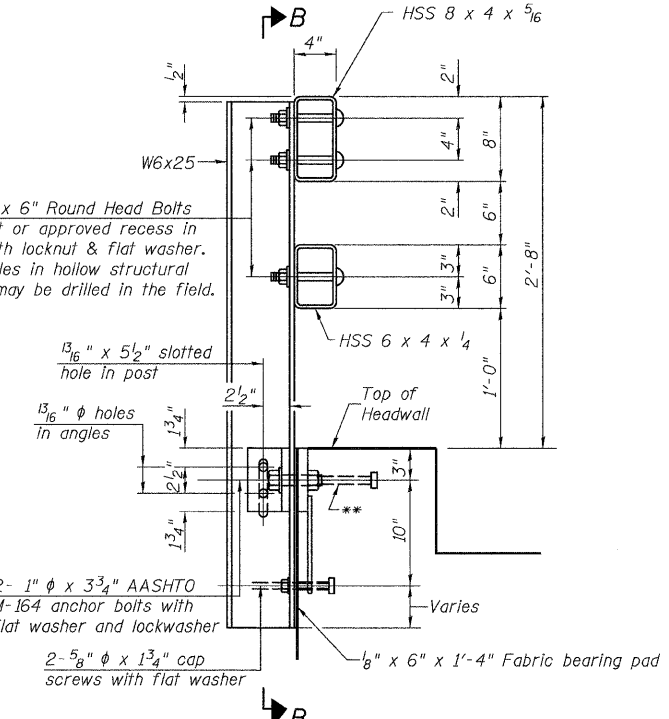


END OF RAIL DETAILS

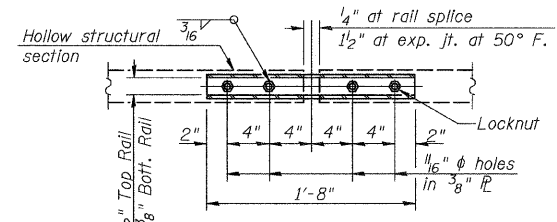


SECTION B-B

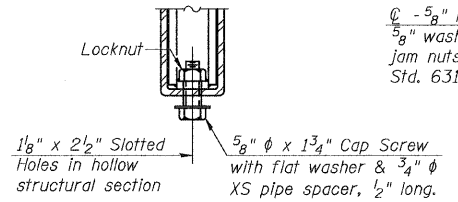
4- 3/4"  $\phi$  x 6" Round Head Bolts  
(With slot or approved recess in head) with locknut & flat washer.  
7/8"  $\phi$  holes in hollow structural section may be drilled in the field.



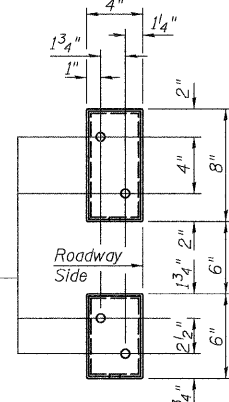
SECTION AT RAIL POST



PLAN-BOTT. SPLICE R TYPICAL

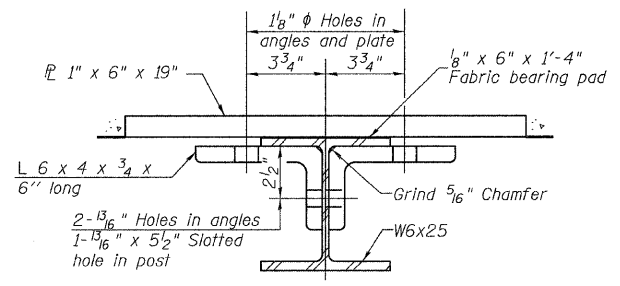


RAIL SPLICE CONNECTION AT EXPANSION JT.

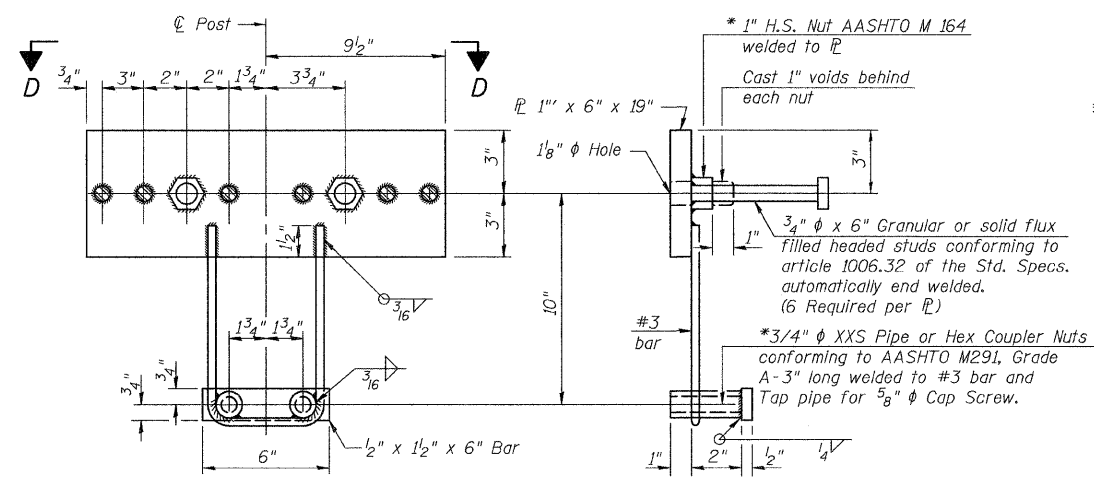


VIEW E-E

**NOTES**  
All field drilled holes shall be coated with an approved zinc rich paint before erection.  
For multi-span bridges, sufficient 1/4" x 6" x 1'-2" galvanized steel shims shall be provided to align rail between adjacent spans. Cost included with Steel Railing, Type SM.  
All steel rail members shall be galvanized according to Article 509.05 of the Standard Specifications.  
\*\*The studs of the anchor devices shall be placed below the top reinforcement bars and the outermost longitudinal reinforcement bar shall be placed directly above the studs of the rail post anchor device.

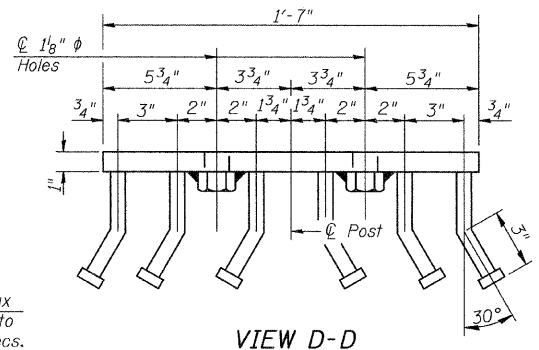


SECTION C-C



ANCHOR DEVICE

\*Threaded areas shall be plugged or blocked off during casting of beam. Galvanized after fabrication.



VIEW D-D

**BILL OF MATERIAL**

Item	Unit	Quantity
Steel Railing, Type SM	FOOT	73

**STEEL RAILING, TYPE SM**  
**LOGAN COUNTY**  
**SECTION 09-00119-00-BR**  
**COUNTY HIGHWAY 10 OVER**  
**LAKE FORK CREEK TRIBUTARY**

SHEET NO. 4 4 SHEETS	ROUTE NO.	SECTION	COUNTY	TOTAL SHEETS	SHEET NO.
	CH 10	09-00119-00-BR	LOGAN	17	10
	S.N. 054-3922		CONTRACT NO. 93525		
FED. ROAD DIST. NO. 7 ILLINOIS			FED. AID PROJECT BRS-0566(107)		