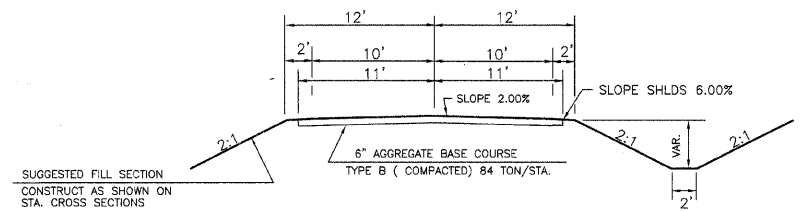
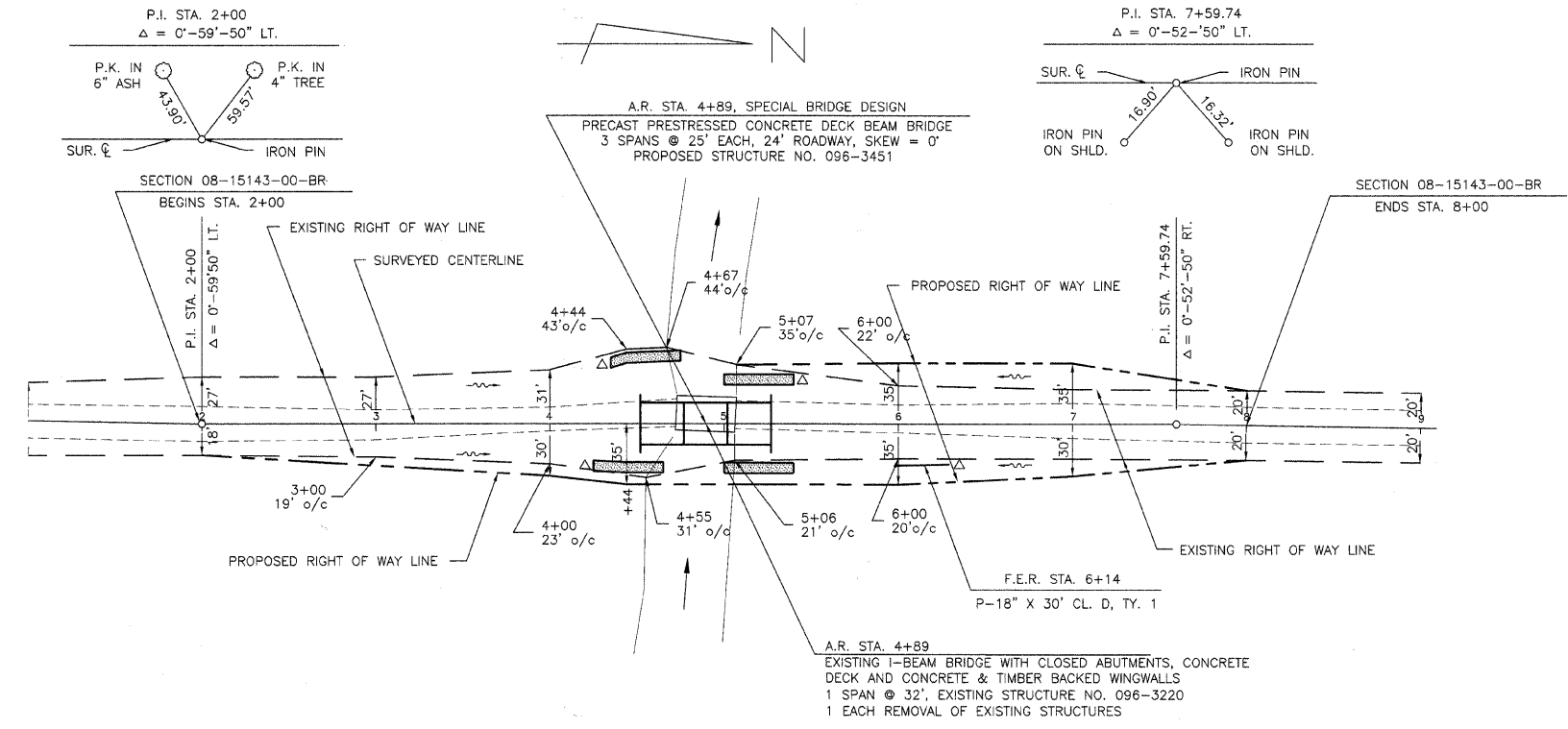


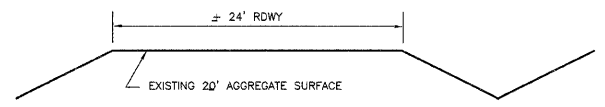
HERMAN M. KLEMICK III & CHRISTOPHER SIMPSON & JUANITA SIMPSON

SECTION	08-15143-00-BR	TOTAL SHEETS	14	SHEET NO.	2
COUNTY	WAYNE				
ROAD DIST.	LEECH				
STA.	1+00	TO STA.	9+00		

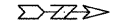
CONTRACT NO. 95607



TYPICAL CROSS SECTION OF PROPOSED IMPROVEMENT

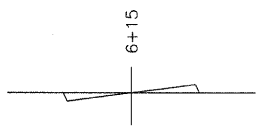


TYPICAL CROSS SECTION OF EXISTING ROADWAY



SCALES:
1" = 50' HOR
1" = 10' VER

INA LEE SAMPLE & DELMAR SAMPLE,
TRUSTEES OF REVOCABLE TRUST



PAULINE FELIX, TRUSTEE OF THE
PAULINE FELIX REVOCABLE TRUST

Station	Vertical Curve Data	Earthwork Schedule	Aggregate Base Course	Construct Transitions	Other Notes
410	B.M. #1 ELEVATION 379.35 P.K. NAIL IN 8" MAPLE ± 80' LT. STA. 5+40	EARTHWORK SCHEDULE 596 CU YD EARTH EXCAVATION 447 CU YD EARTH EXCAVATION ADJUSTED 25% 404 CU YD EMBANKMENT 390 CU YD CHANNEL EXCAVATION 293 CU YD CHANNEL EXCAVATION ADJUSTED 25%	AGGREGATE BASE COURSE TYPE B 6" STA. 1+50 TO BRIDGE = 252 TON BRIDGE TO STA. 8+50 = 239 TON F.E.R. STA. 6+14 = 10 TON TOTAL = 501 TON	CONSTRUCT TRANSITIONS FROM EXIST. RDWY. @ STA. 1+50 TO PROP. 24' RDWY. @ STA. 2+00 FROM PROP. 24' RDWY. @ STA. 8+00 TO EXIST. RDWY. @ STA. 8+50 EARTHWORK QUANTITIES INCLUDED IN THOSE LISTED	
400		STONE RIPRAP DITCH RT. STA. 4+25 TO STA. 4+65 = 12 TON LT. STA. 4+35 TO STA. 4+75 = 12 TON LT. STA. 5+00 TO STA. 5+40 = 12 TON RT. STA. 5+00 TO STA. 5+40 = 12 TON TOTAL = 48 TON	TEMPORARY DITCH CHECKS Δ RT. STA. 4+20 = 1 EACH LT. STA. 4+30 = 1 EACH LT. STA. 5+45 = 1 EACH RT. STA. 6+35 = 1 EACH TOTAL = 4 EACH	PERIMETER EROSION BARRIER 15' AT EACH CORNER OF BRIDGE ON TOE OF CHANNEL SLOPE = 60 FEET	SEEDING, CLASS 2 (SPECIAL) STA. 1+50 TO STA. 8+50 = 0.6 ACRES
390					UTILITIES NONE
380	EXISTING CENTERLINE GRADE PROPOSED CENTERLINE GRADE				
370					
360					
350					
340					
330					