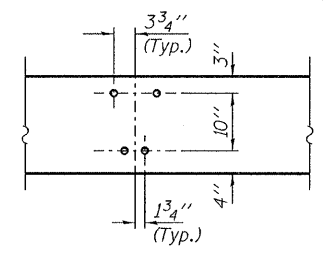
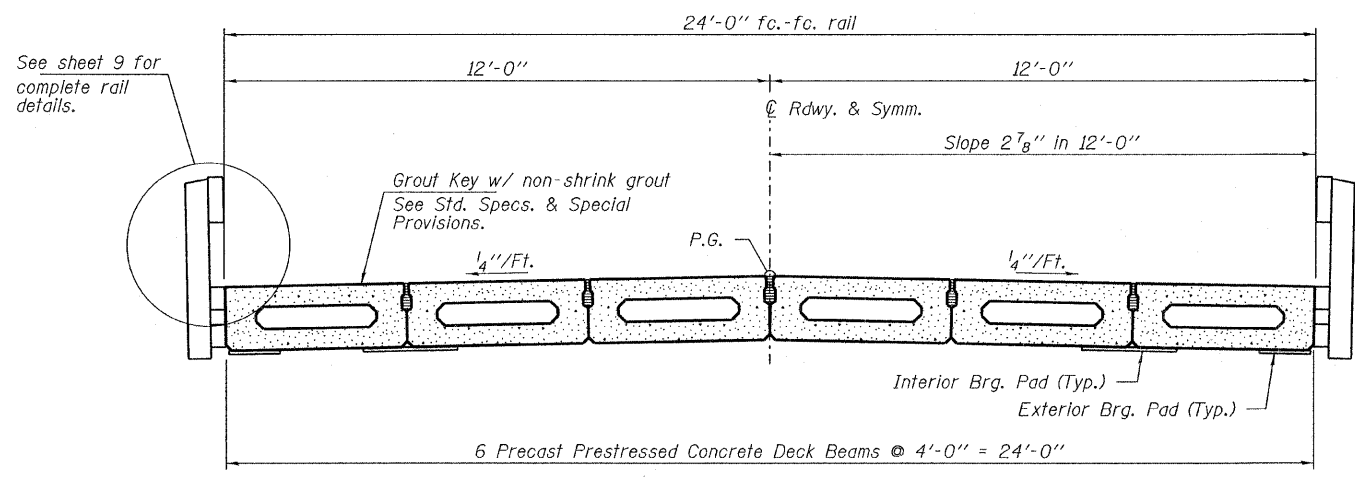


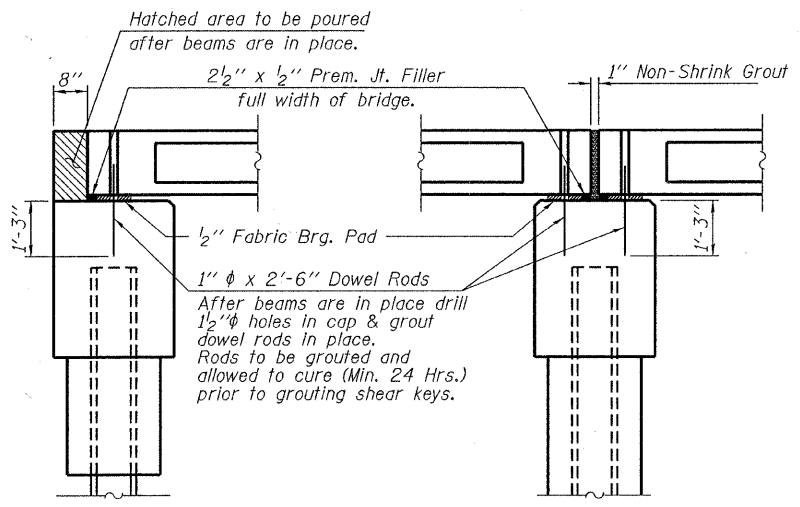
ELEVATION
 Showing Rail Post Spaces
 See sheet 5 of 10 for Railing Details.



DETAIL A



CROSS SECTION
 See sheets 2 & 3 of 10 for Superstructure.



SECTION AT ABUTMENTS
 © Rt. L's

SECTION AT PIERS
 © Rt. L's

DESIGNED - A.S.L.
CHECKED - S.W.M.
DRAWN - D.T.M.
CHECKED - D.A.B.

SUPERSTRUCTURE DETAILS
STRUCTURE NO. 096-3451

HAMPTON, LENZINI AND RENWICK, INC.
 CIVIL ENGINEERS - STRUCTURAL ENGINEERS - LAND SURVEYORS
 3085 STEVENSON DRIVE, SUITE 201
 SPRINGFIELD, ILLINOIS 62703
 217.546.3400 www.hlrengineering.com

HLR
 184.000959
 ILLINOIS PROFESSIONAL DESIGN FIRM LLS / PE / SE CORPORATION
 PROJECT NUMBER: 09.0060.130 DATE: 06/22/09

SHEET NO. 4	T.R.	SECTION	COUNTY	TOTAL SHEETS	SHEET NO.
	622	08-15143-00-BR	WAYNE	14	8
10 SHEETS	LEECH ROAD DISTRICT		CONTRACT NO. 95607		
FED. ROAD DIST. NO.		ILLINOIS	FED. AID PROJECT		