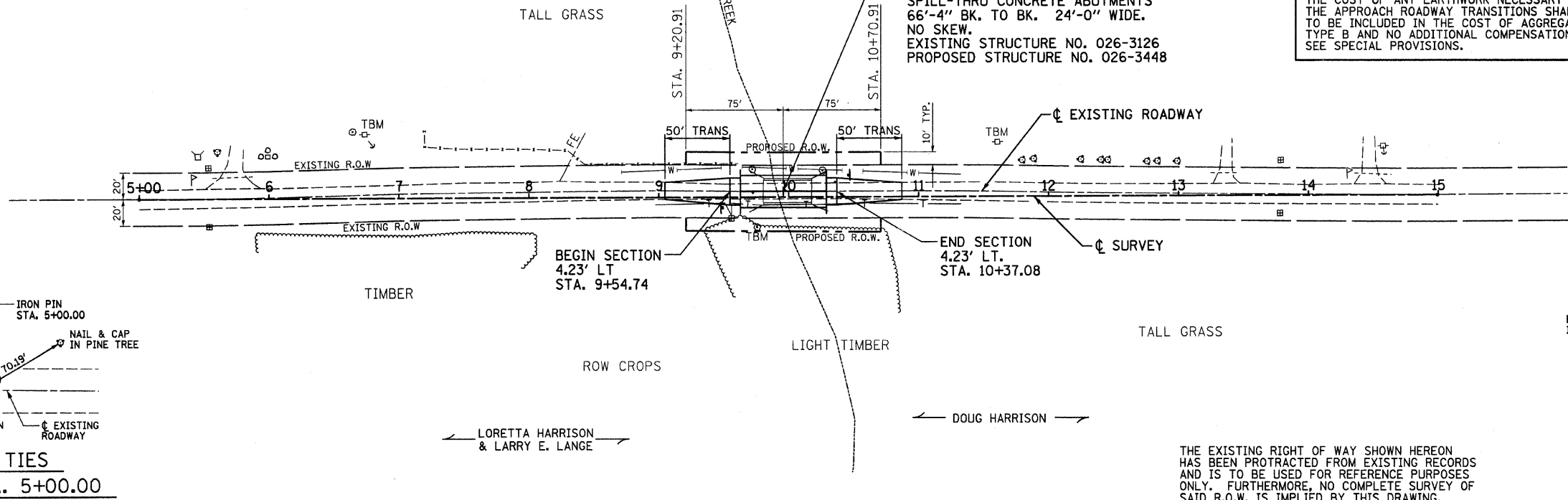


← JOANN GIVENS & JERRY M. SASSE →

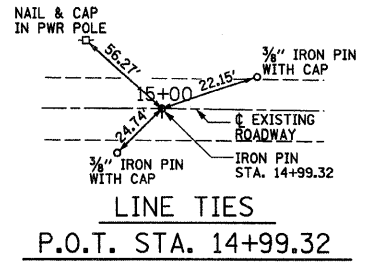
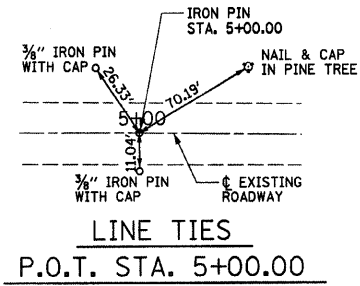
← ROBERT & JANET WILLIAMS →

EXISTING STRUCTURE: SINGLE SPAN BRIDGE WITH CAST-IN-PLACE CONCRETE DECK ON CLOSED CONCRETE ABUTMENTS. 39' BK. TO BK. ABUTMENTS, 19.3' OUT TO OUT OF STRUCTURE. EXISTING STRUCTURE NUMBER 026-3126. NO SALVAGE. SEE SPECIAL PROVISIONS.

NOTE
THE COST OF ANY EARTHWORK NECESSARY TO CONSTRUCT THE APPROACH ROADWAY TRANSITIONS SHALL BE CONSIDERED TO BE INCLUDED IN THE COST OF AGGREGATE SURFACE COURSE, TYPE B AND NO ADDITIONAL COMPENSATION WILL BE ALLOWED. SEE SPECIAL PROVISIONS.



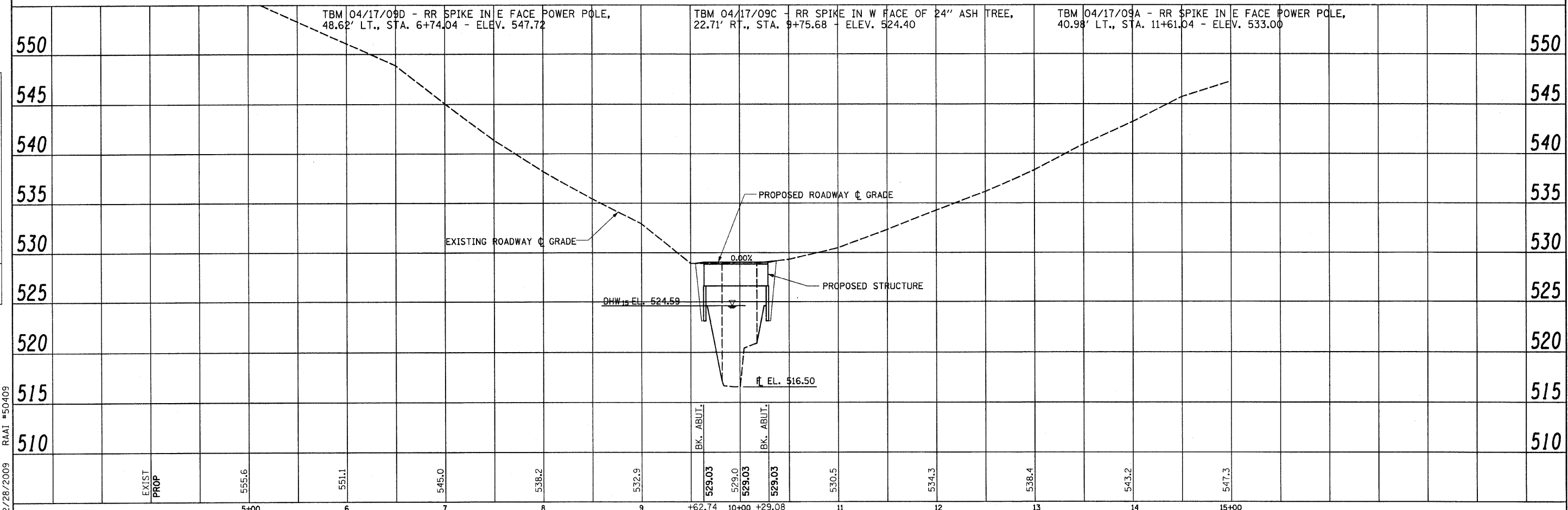
TREE REMOVAL (6 TO 15 UNITS DIAMETER)	
LOCATION	UNIT
21' LT., STA. 9+72	7
20' LT., STA. 10+26	10
TOTAL	17



THE EXISTING RIGHT OF WAY SHOWN HEREON HAS BEEN PROTRACTED FROM EXISTING RECORDS AND IS TO BE USED FOR REFERENCE PURPOSES ONLY. FURTHERMORE, NO COMPLETE SURVEY OF SAID R.O.W. IS IMPLIED BY THIS DRAWING.

DATE	
BY	
REVISIONS	
PLANNED	
ALIGNED	
CHECKED	
NO. 1	
NO. 2	
NO. 3	
NO. 4	
NO. 5	
NO. 6	
NO. 7	
NO. 8	
NO. 9	
NO. 10	
NO. 11	
NO. 12	
NO. 13	
NO. 14	
NO. 15	
NO. 16	
NO. 17	
NO. 18	
NO. 19	
NO. 20	

DATE	
BY	
REVISIONS	
PLANNED	
ALIGNED	
CHECKED	
NO. 1	
NO. 2	
NO. 3	
NO. 4	
NO. 5	
NO. 6	
NO. 7	
NO. 8	
NO. 9	
NO. 10	
NO. 11	
NO. 12	
NO. 13	
NO. 14	
NO. 15	
NO. 16	
NO. 17	
NO. 18	
NO. 19	
NO. 20	



12/28/2009 RAAI #50409

DESIGNED - GLH	REVISED -	STATE OF ILLINOIS DEPARTMENT OF TRANSPORTATION	PLAN AND PROFILE OF ROADWAY BRIDGE OVER RICHLAND CREEK		ROUTE	SECTION	COUNTY	TOTAL SHEETS	SHEET NO.	
DRAWN - JN	REVISED -		SCALE: AS NOTED	STA. 5+00.00 TO STA. 15+00.00	TR 292	03-20126-00-BR	FAYETTE	10	3	
CHECKED - GLH	REVISED -					CONTRACT NO. 95619				
DATE - MAY 2009	REVISED -					ILLINOIS FED. AID PROJECT				