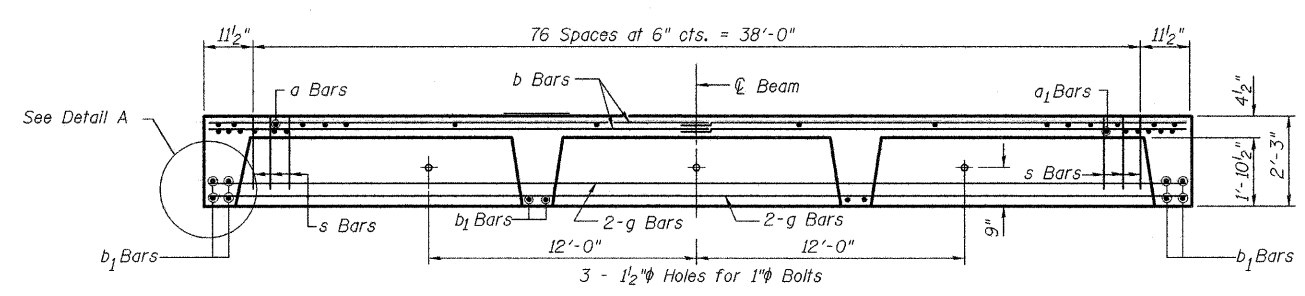
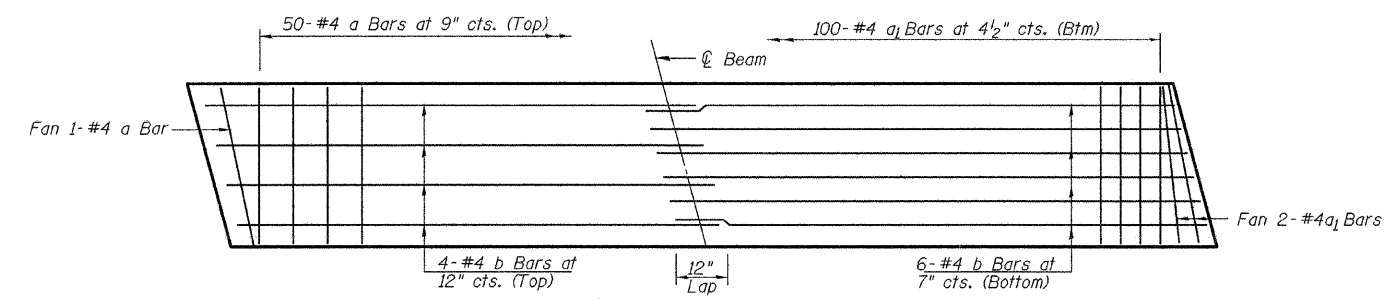


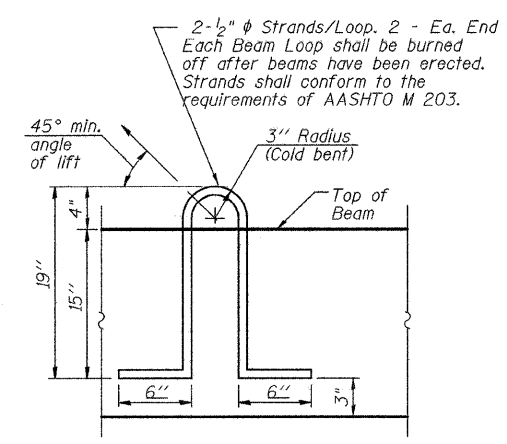
PLAN



LONGITUDINAL SECTION

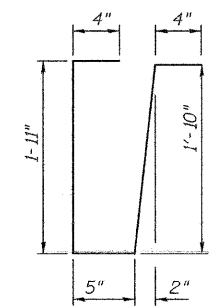


SLAB REINFORCEMENT

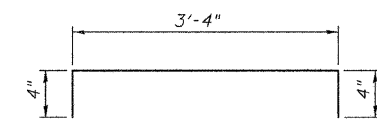


LIFTING LOOP DETAIL

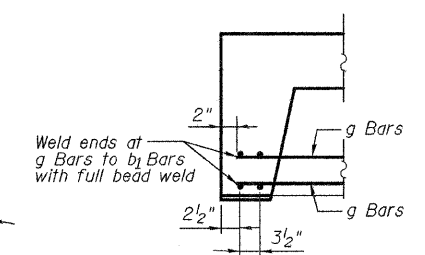
Approved alternate may be substituted for the above.



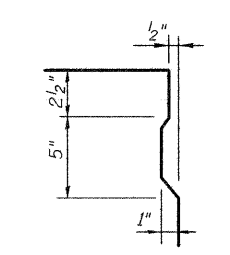
BAR s



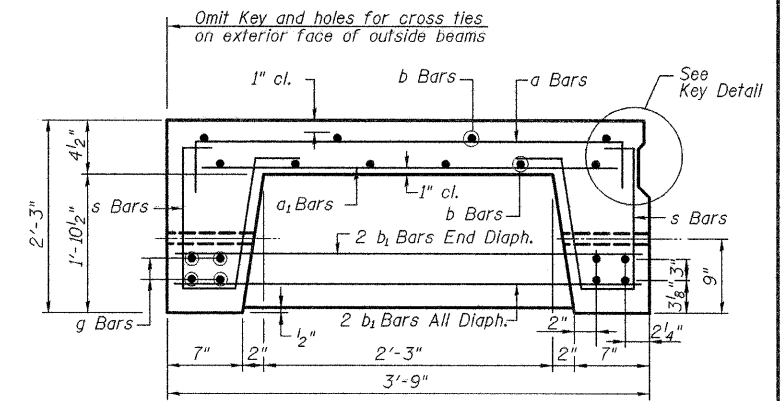
BAR a



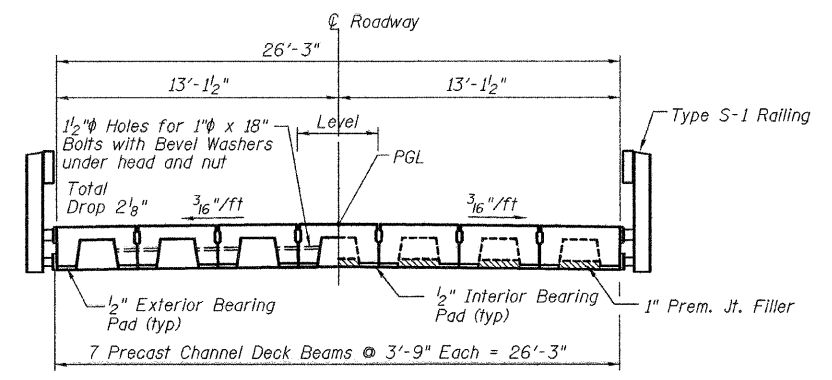
DETAIL A



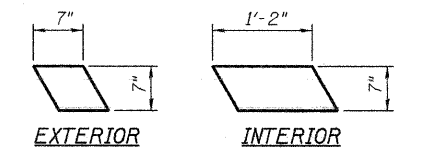
KEY DETAIL



TYPICAL SECTION

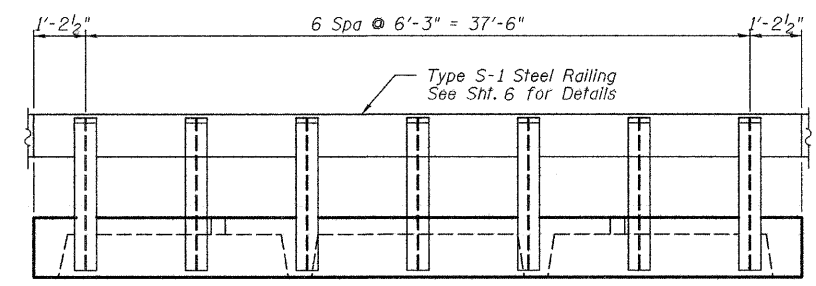


TYPICAL CROSS SECTION



BEARING PADS

(1/2" Thick 4 Required - Exterior)
(1/2" Thick 12 Required - Interior)



OUTSIDE BEAM POST SPACING DETAIL

BAR LIST

ONE BEAM ONLY

(For information only)

Bar	No.	Size	Length	Shape
a	52	#4	4'-0"	U
a ₁	104	#4	3'-3"	—
b	20	#4	20'-4"	—
b ₁	12	#4	3'-6"	—
g	8	#11	39'-7"	—
s	154	#4	4'-10"	U

BILL OF MATERIAL

ITEM	UNIT	QUANTITY
Precast Concrete Bridge Slab	Sq. Ft.	1048

NOTES

The units shall remain on the bottom supporting forms until the concrete has attained a compressive strength of not less than 3,500 pounds per square inch. This work shall be done and paid for in accordance with Section 504 of the Standard Specifications effective January 1, 2007. In case of conflict these notes shall take precedence. The 1" diameter rods in the transverse tie assembly shall be tightened to a snug fit and the threads set. Space reinforcement to miss holes for dowel rods. Reinforcement bars shall conform to ASTM A 706, Grade 60. See Special Provisions. Two 1/8" fabric adjusting shims of the dimensions of the exterior bearing pad shall be provided for each bearing pad location. Unless otherwise approved by the Engineer, lifting loops shall be 1/2" diameter non-galvanized high strength stress relieved wire strands. A minimum 2 1/2" diameter lifting pin shall be used to engage the lifting loops during handling. Cost of reinforcement and accessories cast into slab unit, of bearing pads, furnishing, drilling for, placing and grouting anchor dowels, of furnishing and assembling of 1" diameter bolts and of grouting longitudinal shear key is included in the Unit bid price for "Precast Concrete Bridge Slab." Tack welding of stirrups to longitudinal reinforcement bars will not be permitted except as otherwise authorized in writing by the Engineer.

27"x 45" PRECAST CONCRETE BRIDGE SLAB

STRUCTURE NO. 015-3424

RTE.	SECTION	COUNTY	TOTAL SHEETS	SHEET NO.
TR16A	07-09123-00-BR	COLES	11	5
CONTRACT NO. 95624				
FED. ROAD DIST. NO. 7 ILLINOIS FED. AID PROJECT				

THE UPCHURCH GROUP, INC.