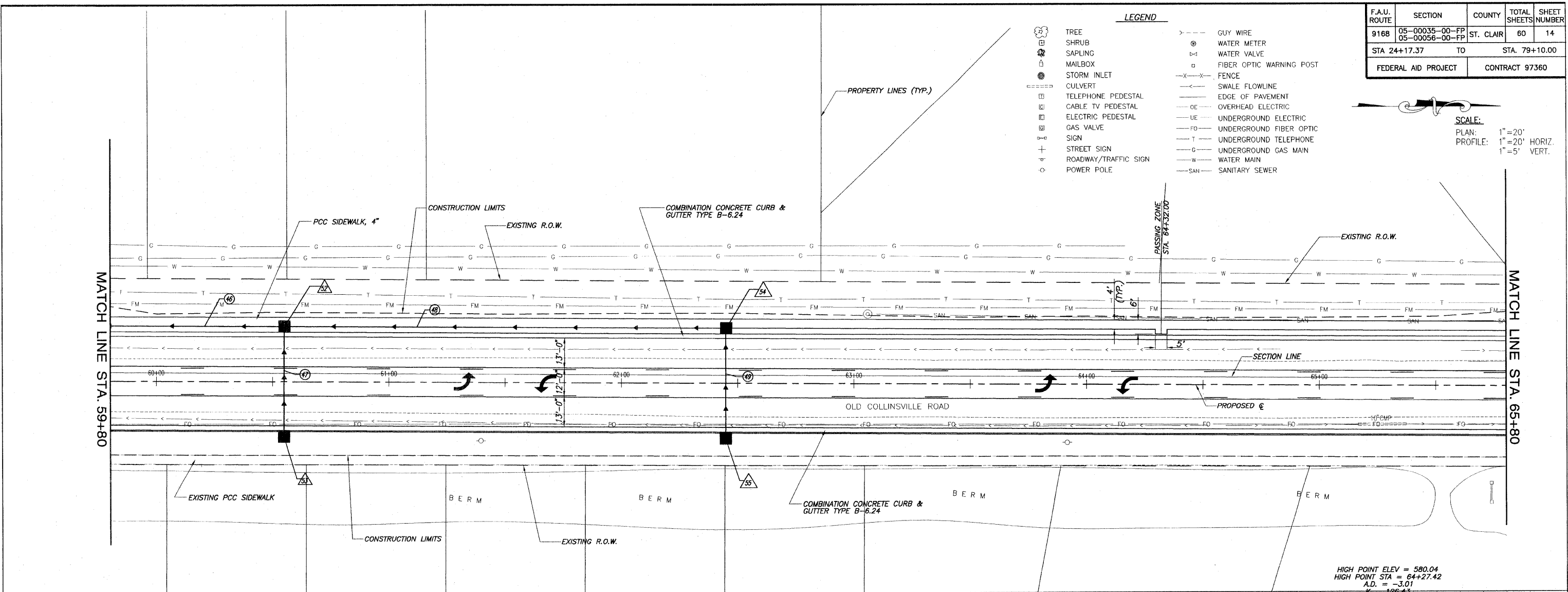


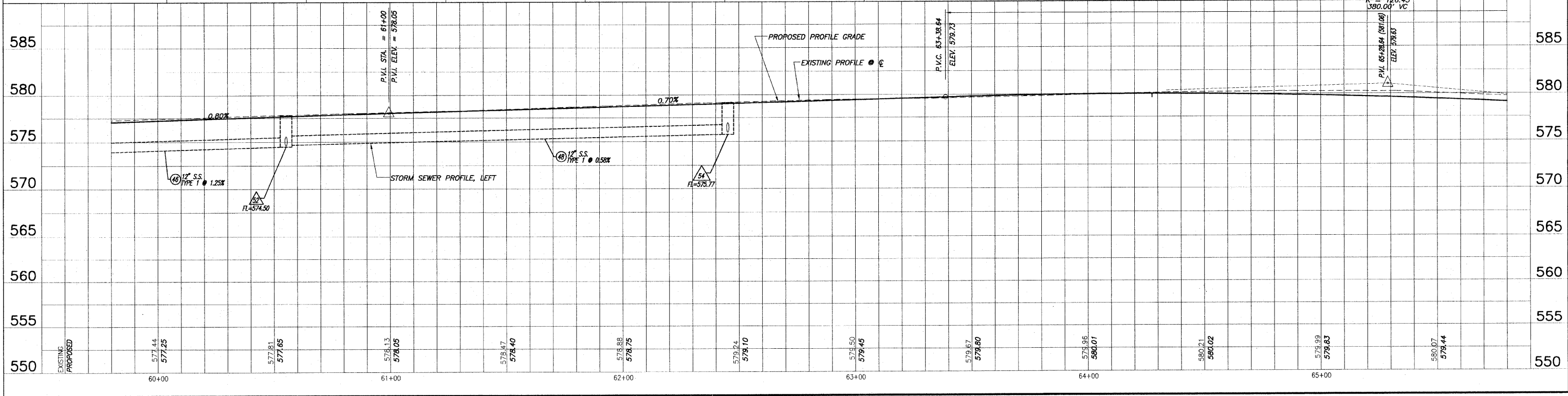
F.A.U. ROUTE	SECTION	COUNTY	TOTAL SHEETS	SHEET NUMBER
9168	05-00035-00-FP 05-00056-00-FP	ST. CLAIR	60	14
STA 24+17.37 TO		STA. 79+10.00		
FEDERAL AID PROJECT		CONTRACT 97360		

- LEGEND**
- TREE
  - SHRUB
  - SAPLING
  - MAILBOX
  - STORM INLET
  - CULVERT
  - TELEPHONE PEDESTAL
  - CABLE TV PEDESTAL
  - ELECTRIC PEDESTAL
  - GAS VALVE
  - SIGN
  - STREET SIGN
  - ROADWAY/TRAFFIC SIGN
  - POWER POLE
  - GUY WIRE
  - WATER METER
  - WATER VALVE
  - FIBER OPTIC WARNING POST
  - FENCE
  - SWALE FLOWLINE
  - EDGE OF PAVEMENT
  - OVERHEAD ELECTRIC
  - UNDERGROUND ELECTRIC
  - UNDERGROUND FIBER OPTIC
  - UNDERGROUND TELEPHONE
  - UNDERGROUND GAS MAIN
  - WATER MAIN
  - SANITARY SEWER

**SCALE:**  
 PLAN: 1" = 20'  
 PROFILE: 1" = 20' HORIZ.  
 1" = 5' VERT.



HIGH POINT ELEV = 580.04  
 HIGH POINT STA = 64+27.42  
 A.D. = -3.01  
 K = 126.43  
 380.00' VC



ROADWAY PLAN AND PROFILE OLD COLLINSVILLE ROAD IMPROVEMENTS  
 SECTION 05-00035-00-FP & 05-00056-00-FP ST. CLAIR COUNTY, ILLINOIS

E:\1205-12980-100 Collinsville Road\14.dwg, 4/7/2008 11:13:27 AM, PLOT BY: N.A.L.