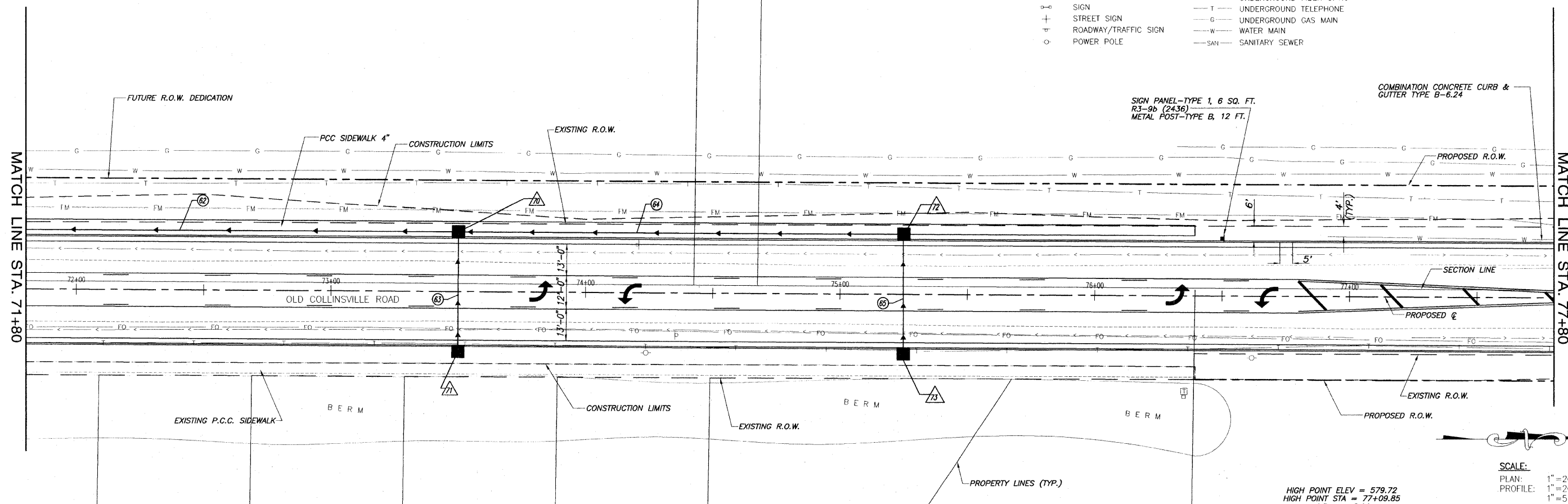


F.A.U. ROUTE	SECTION	COUNTY	TOTAL SHEETS	SHEET NUMBER
9168	05-00035-00-FP 05-00056-00-FP	ST. CLAIR	60	16
STA 24+17.37 TO STA. 79+10.00				
FEDERAL AID PROJECT			CONTRACT 97360	

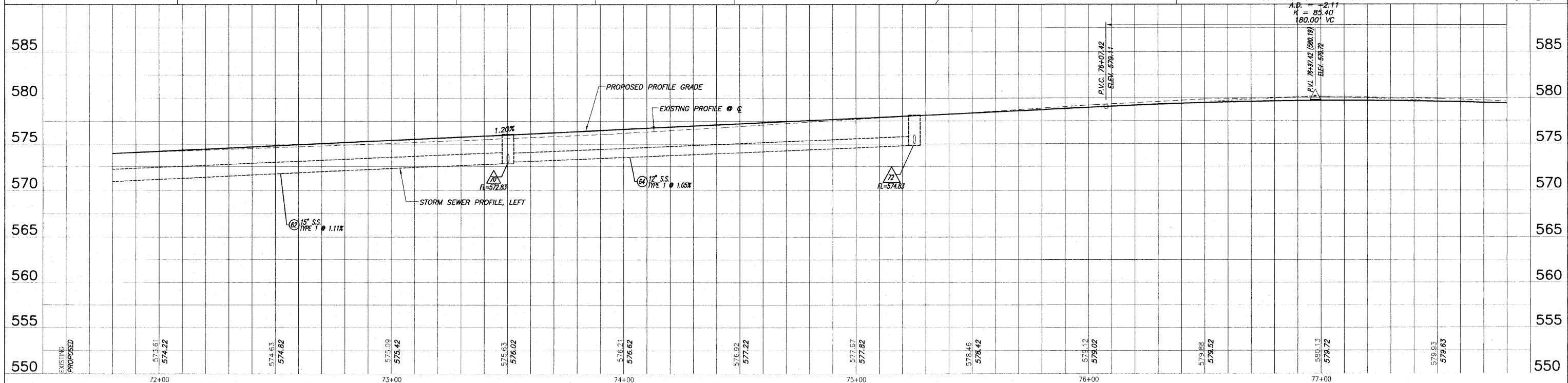
LEGEND

(Symbol)	TREE	(Symbol)	GUY WIRE
(Symbol)	SHRUB	(Symbol)	WATER METER
(Symbol)	SAPLING	(Symbol)	WATER VALVE
(Symbol)	MAILBOX	(Symbol)	FIBER OPTIC WARNING POST
(Symbol)	STORM INLET	(Symbol)	FFNCF
(Symbol)	CULVERT	(Symbol)	SWALE FLOWLINE
(Symbol)	TELEPHONE PEDESTAL	(Symbol)	EDGE OF PAVEMENT
(Symbol)	CABLE TV PEDESTAL	(Symbol)	OVERHEAD ELECTRIC
(Symbol)	ELECTRIC PEDESTAL	(Symbol)	UNDERGROUND ELECTRIC
(Symbol)	GAS VALVE	(Symbol)	UNDERGROUND FIBER OPTIC
(Symbol)	SIGN	(Symbol)	UNDERGROUND TELEPHONE
(Symbol)	STREET SIGN	(Symbol)	UNDERGROUND GAS MAIN
(Symbol)	ROADWAY/TRAFFIC SIGN	(Symbol)	WATER MAIN
(Symbol)	POWER POLE	(Symbol)	SANITARY SEWER



HIGH POINT ELEV = 579.72
 HIGH POINT STA = 77+09.85
 A.D. = 2.11
 K = 85.40
 180.00 VC

SCALE:
 PLAN: 1" = 20'
 PROFILE: 1" = 20' HORIZ.
 1" = 5' VERT.



ROADWAY PLAN AND PROFILE OLD COLLINSVILLE ROAD IMPROVEMENTS
 SECTION 05-00035-00-FP & 05-00056-00-FP ST. CLAIR COUNTY, ILLINOIS

E:\11351-0716\11351-0716.dwg - 11/20/08 11:25:59 AM, Printed by W.A.L.