

| | |
|-----------------------------|-----------------|
| WASHINGTON COUNTY, ILLINOIS | |
| COUNTY HIGHWAY 8 | TOTAL SHEETS 27 |
| SECTION 07-00077-01-BR | SHEET NO. 1 |
| CONTRACT 97402 | |
| FEDERAL AID PROJECT | |

STATE OF ILLINOIS
DEPARTMENT OF TRANSPORTATION
DIVISION OF HIGHWAYS

PLANS FOR PROPOSED
HIGHWAY BRIDGE PROGRAM
LOCAL AGENCY PROJECT

FAS ROUTE 836 (COUNTY HIGHWAY 8)
SECTION 07-00077-01-BR
WASHINGTON COUNTY, ILLINOIS
PROJECT NO. BRS-0836(114)
JOB NO. C-98-389-09

INDEX OF SHEETS

- 1 COVER SHEET
- 2 GENERAL NOTES & ALIGNMENT TIES
- 3 SUMMARY OF QUANTITIES
- 4-5 TYPICAL SECTIONS
- 6 SCHEDULE OF QUANTITIES
- 7 PLAN & PROFILE
- 8 MAINTENANCE OF TRAFFIC
- 9-19 SN 095-3260 PLANS
- 20-27 CROSS SECTIONS
- HIGHWAY STANDARDS

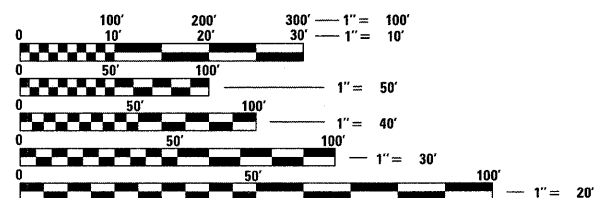
IDOT HIGHWAY STANDARDS

| | |
|-----------|-----------|
| 000001-05 | 631032-05 |
| 001001-02 | 635006-03 |
| 001006 | 635011-02 |
| 202001-01 | 701901-01 |
| 280001-05 | BLR 21-8 |
| 515001-03 | BLR 23-3 |
| 542401-01 | BLR 26-2 |
| 630001-08 | |

DESIGN DESIGNATION

F.A.S. 836 (COUNTY HIGHWAY 8) - MAJOR RURAL COLLECTOR
2021 ADT = 910
DESIGN SPEED = 55 MPH

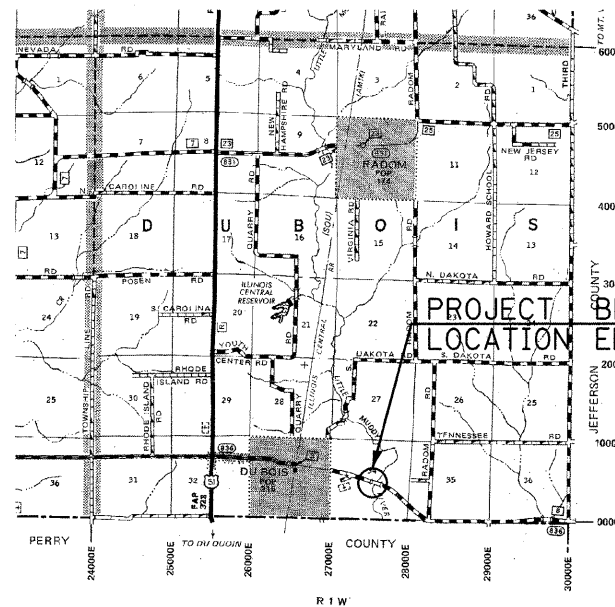
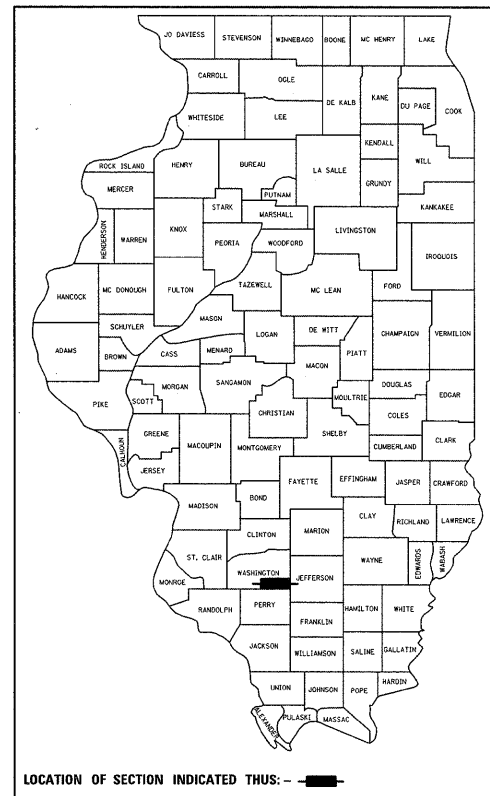
FOR SUMMARY OF QUANTITIES
SEE SHEET 3



FULL SIZE PLANS HAVE BEEN PREPARED USING STANDARD ENGINEERING SCALES. REDUCED SIZED PLANS WILL NOT CONFORM TO STANDARD SCALES. IN MAKING MEASUREMENTS ON REDUCED PLANS, THE ABOVE SCALES MAY BE USED.

J.U.L.I.E.
JOINT UTILITY LOCATION INFORMATION FOR EXCAVATION
1-800-892-0123

CONTRACT NO. 97402



LOCATION MAP

GROSS LENGTH OF PROJECT = 748.90 FEET (0.142 MILES)
NET LENGTH OF PROJECT = 748.90 FEET (0.142 MILES)

PLANS PREPARED BY

HORNER & SHIFRIN, INC.
ENGINEERS

www.HornerShifrIn.com

640 Pierce Boulevard Suite 200 • O'Fallon, Illinois 62269
Phone: (618) 622-3040 • Fax: (618) 622-3070

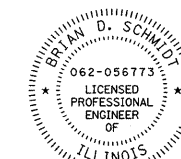
Illinois Professional Design Firm No. 184-000435
License Expires 4/30/2011

STATE OF ILLINOIS
DEPARTMENT OF TRANSPORTATION

APPROVED 1/21/2010 20 10
M. J. [Signature]
WASHINGTON COUNTY HIGHWAY ENGINEER

PASSED 2/8/2010 20
[Signature]
DISTRICT 8 ENGINEER OF LOCAL ROAD & STREETS

RELEASING FOR BID
BASED ON LIMITED
REVIEW 2-8-2010 20
Mary C. Lemire
DEPUTY DIRECTOR OF HIGHWAYS, REGION 5 ENGINEER



Brian D. Schmidt 1/28/2010
BRIAN D. SCHMIDT, P.E. Date
License Expires 11/30/2011

USER NAME = bachmst
LAST SAVED = 1/22/2010
PLOT DATE = 1/21/2010
PLOT TIME = 2:22:45 PM
PLOT SCALE = 20.0000 / IN.
PEN TABLE = V8.tbl
PLOT DRIVER = TR-V8plot204-1c-F:\file.plt
FILE NAME = I:\97402\CAD\Construction\Plans\001\Cover.dgn