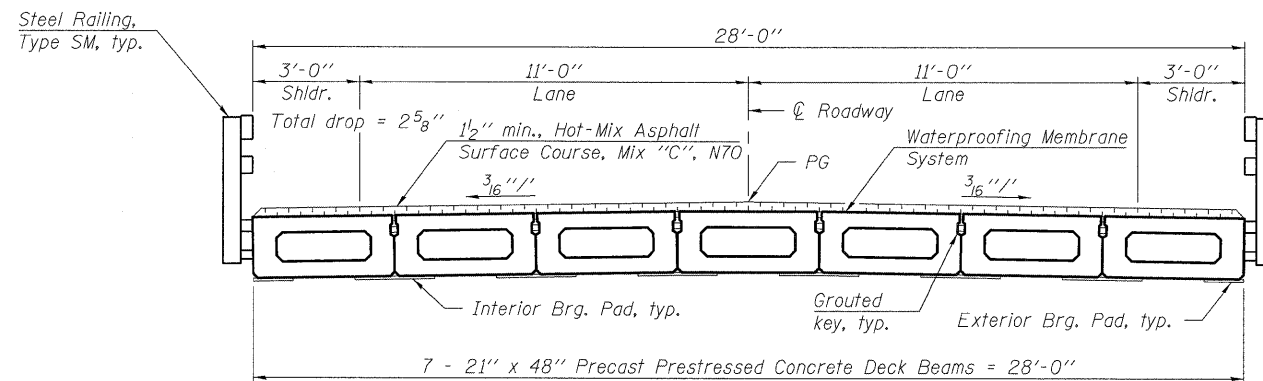
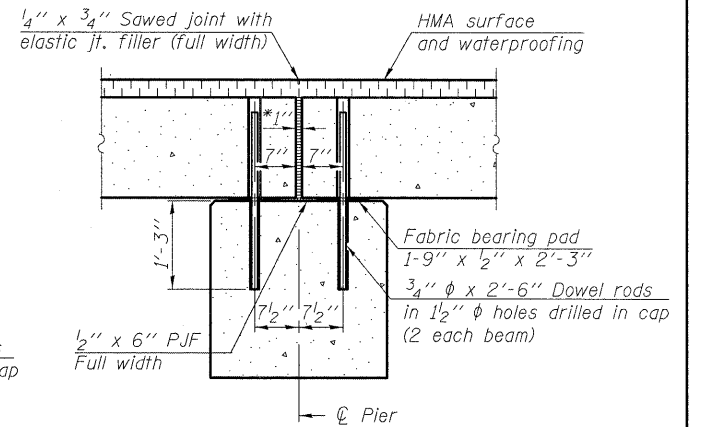
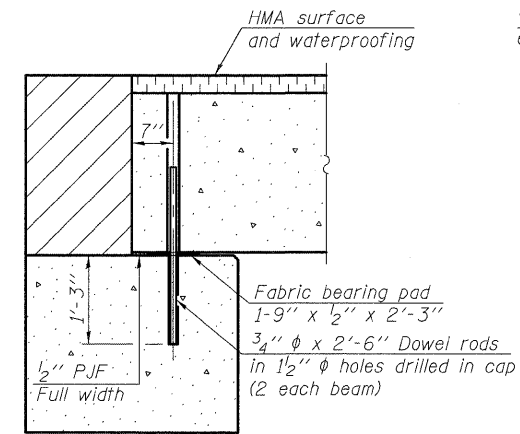
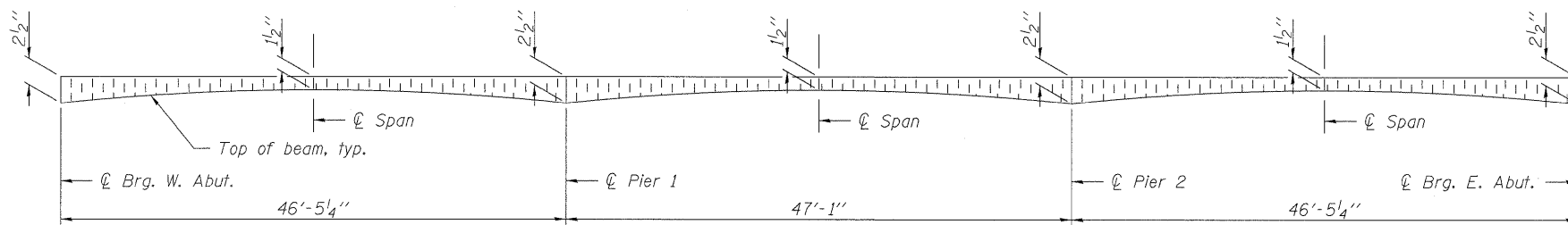
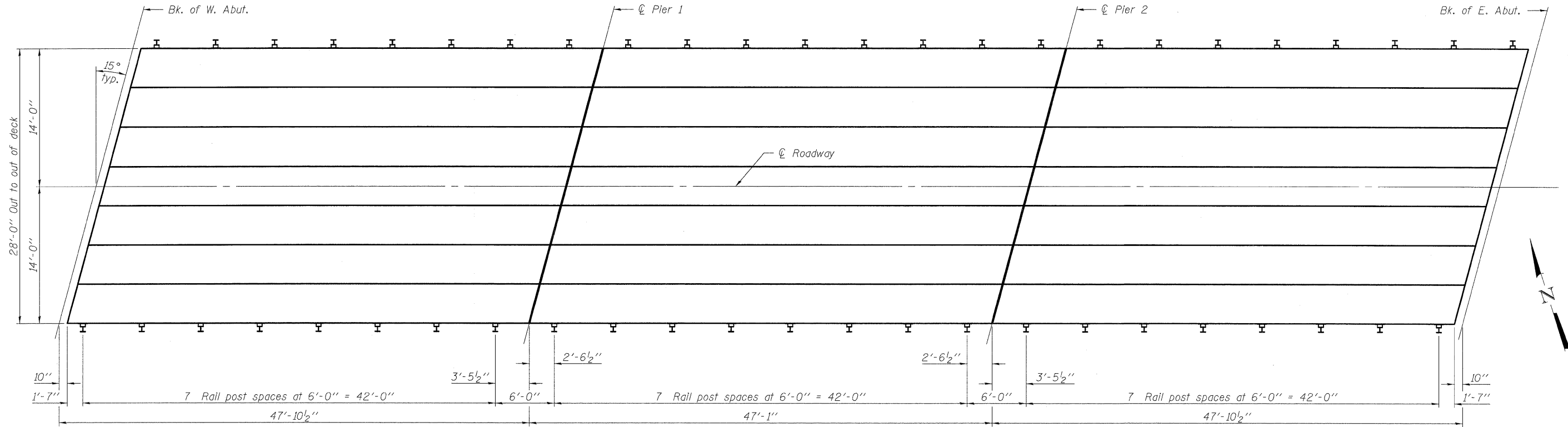


STATE OF ILLINOIS  
DEPARTMENT OF TRANSPORTATION



SECTION THRU ABUTMENT

SECTION THRU FIXED PIER

\*1" Jt. shall be filled with non-shrink grout. 1" dimension may vary to accommodate tolerance in beam lengths.

Notes:

After beams have been erected, holes shall be drilled into substructure and anchor dowels placed. Dowel holes shall be filled with non-shrink grout to top of beam and allowed to cure min. 24 hrs. prior to grouting the shear keys.  
All horizontal dimensions shown in Section thru Abutment and Section thru Fixed Pier are at right angles to beam ends.  
Hatched area shown in Section thru Abutment and Section thru Fixed Pier to be poured after beams are in place.  
See sheet 4 of 11 for bearing pad details.  
Hot-Mix Asphalt Surface Course dimensions include 1/2" for waterproofing membrane thickness.  
For Steel Railing, Type SM details, see sheet 5 of 11.

|          |     |
|----------|-----|
| DESIGNED | EML |
| CHECKED  | KAK |
| DRAWN    | EML |
| CHECKED  | KAK |

**HORNER & SHIFRIN, INC.**  
ENGINEERS

|                          |                    |                           |                      |                    |                 |
|--------------------------|--------------------|---------------------------|----------------------|--------------------|-----------------|
| SHEET NO. 2<br>11 SHEETS | F.A.S. RTE.<br>836 | SECTION<br>07-00077-01-BR | COUNTY<br>WASHINGTON | TOTAL SHEETS<br>27 | SHEET NO.<br>10 |
|                          | CONTRACT NO. 97402 |                           |                      |                    |                 |
| FED. ROAD DIST. NO.      |                    | ILLINOIS FED. AID PROJECT |                      |                    |                 |

**SUPERSTRUCTURE**  
**STRUCTURE NO. 095-3260**