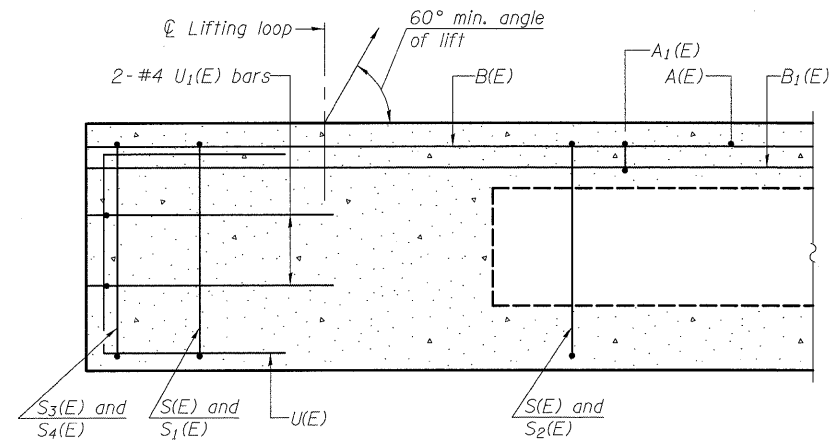
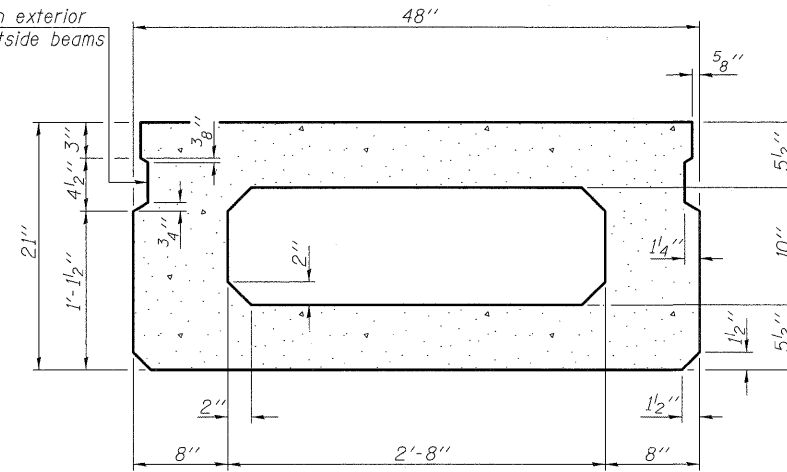


STATE OF ILLINOIS
DEPARTMENT OF TRANSPORTATION

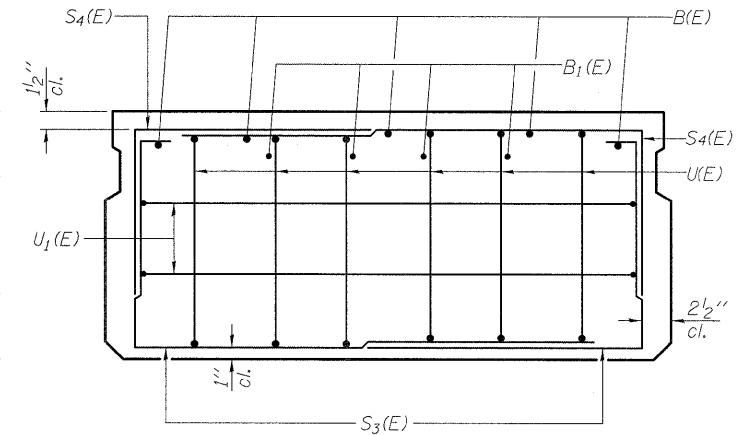


SECTION C-C

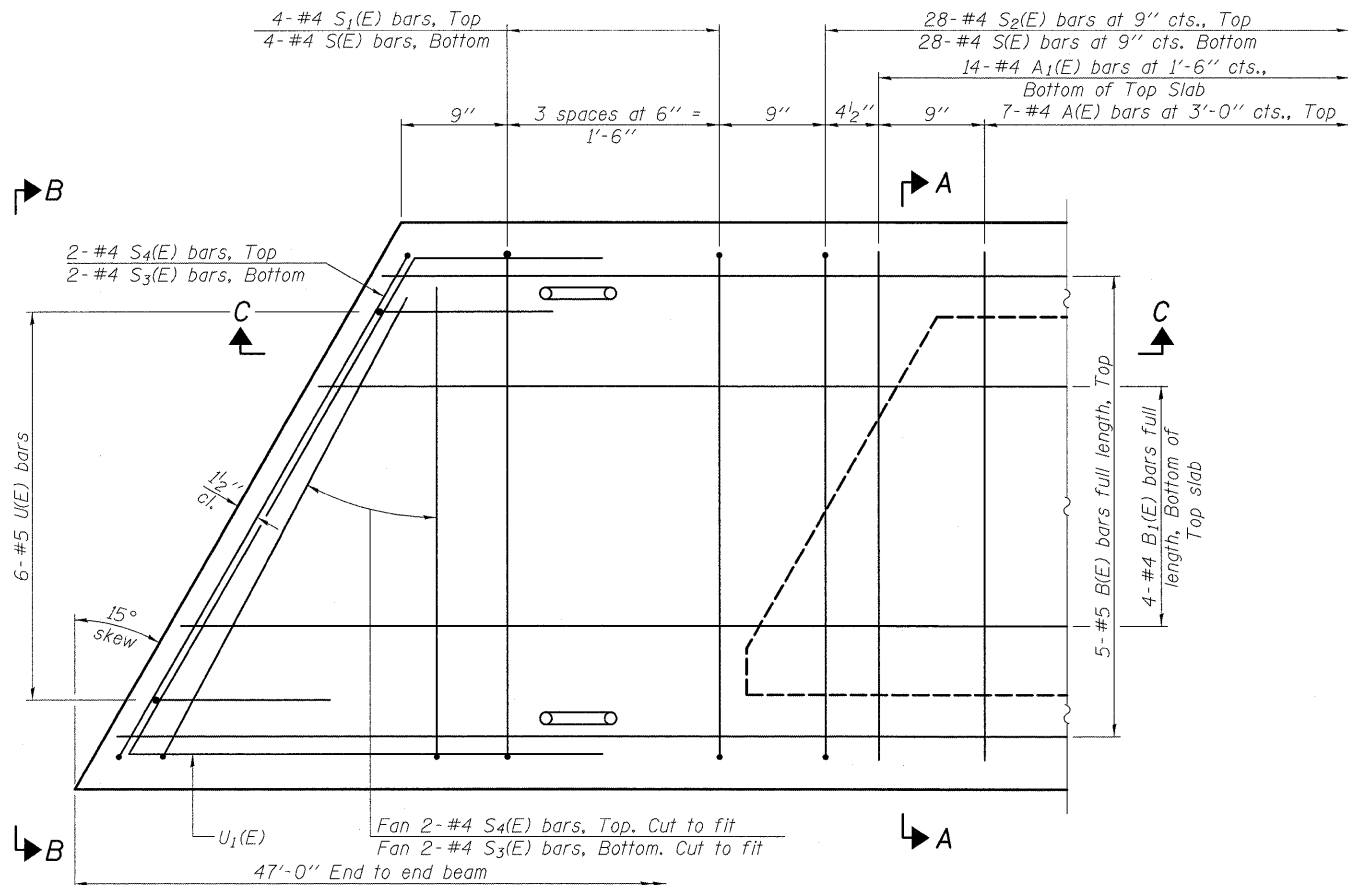
Omit key on exterior face of outside beams



SECTION A-A
(Showing dimensions)



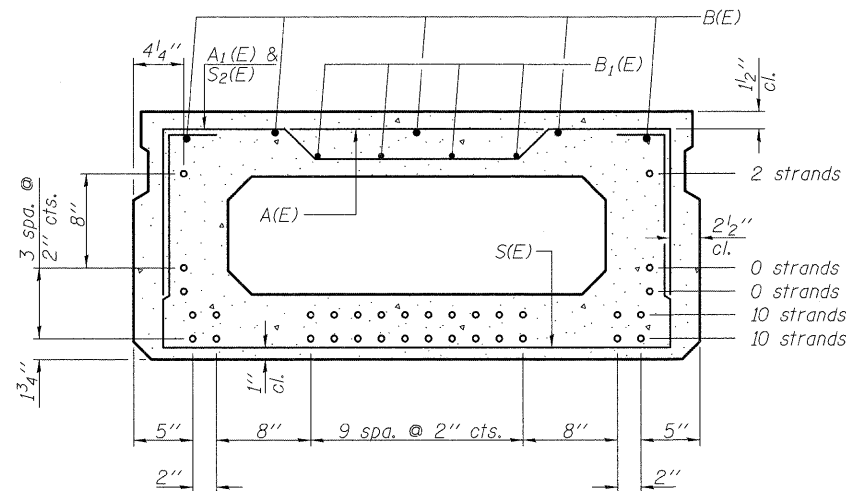
VIEW B-B



PLAN VIEW

Note: Spacing of S(E) and S2(E) bars may be adjusted up to 4" in the immediate area of the transverse tie diaphragms to miss the block outs for the transverse ties.

Similar about C



SECTION A-A

(Showing reinforcement and permissible strand locations)

Note: Place the number of strands specified in each row symmetrically about the centerline of beam in the permissible strand locations shown.

BAR LIST
ONE BEAM ONLY
(For information only)

Bar	No.	Size	Length	Shape
A(E)	14	#4	3'-7"	—
A1(E)	28	#4	3'-10"	—
B(E)	5	#5	46'-8"	—
B1(E)	4	#4	46'-8"	—
S(E)	64	#4	7'-5"	□
S1(E)	8	#4	5'-11"	□
S2(E)	56	#4	6'-2"	□
S3(E)	8	#4	4'-8"	□
S4(E)	8	#4	3'-11"	□
U(E)	12	#5	4'-0"	□
U1(E)	4	#4	7'-1"	□

Note: See sheet 4 of 11 for additional details and Bill of Material.

DESIGNED	EML
CHECKED	KAK
DRAWN	EML
CHECKED	KAK

PD-2148-L

10-1-08

21" X 48" PPC DECK BEAM
STRUCTURE NO. 095-3260

HORNER & SHIFRIN, INC.
ENGINEERS

SHEET NO. 3	F.A.S. RTE.	SECTION	COUNTY	TOTAL SHEETS	SHEET NO.
	836	07-00077-01-BR	WASHINGTON	27	11
11 SHEETS	CONTRACT NO. 97402				
FED. ROAD DIST. NO. ILLINOIS FED. AID PROJECT					