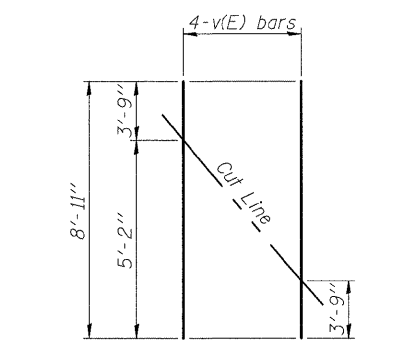
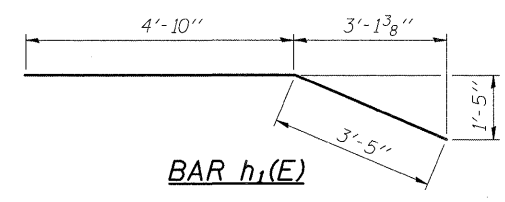
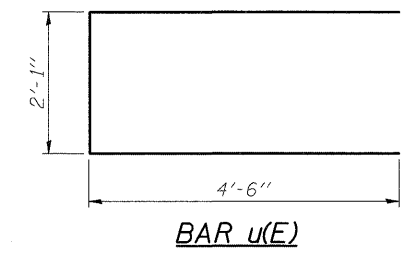
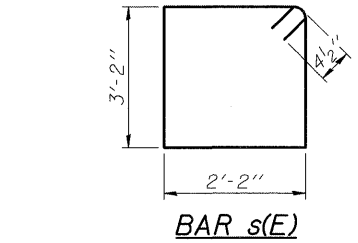
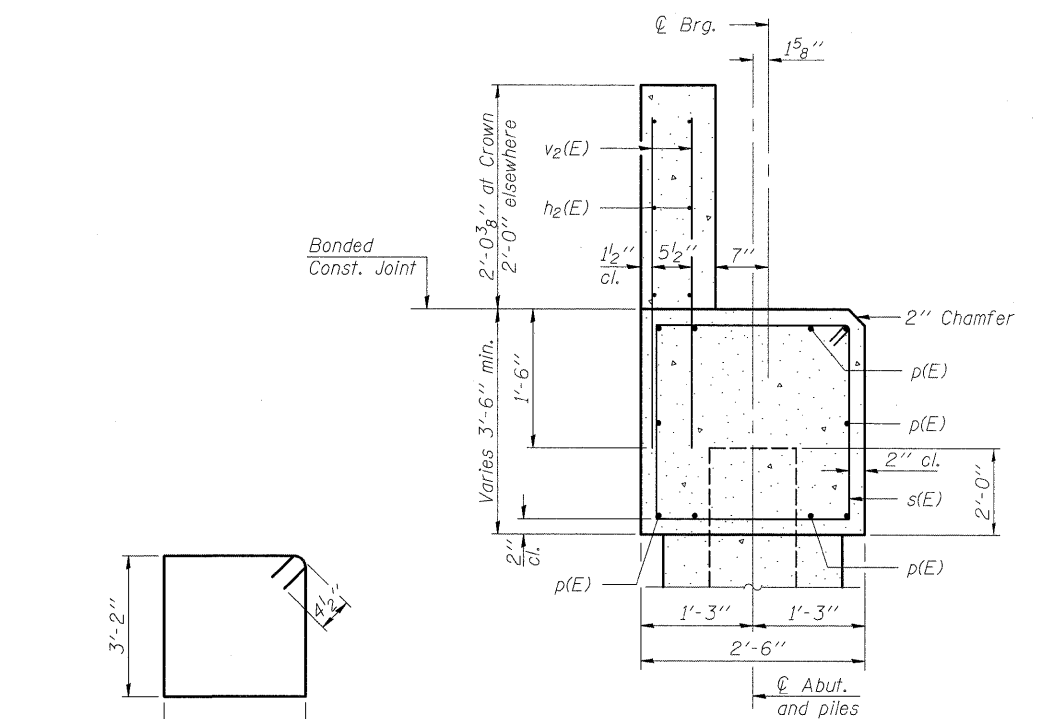
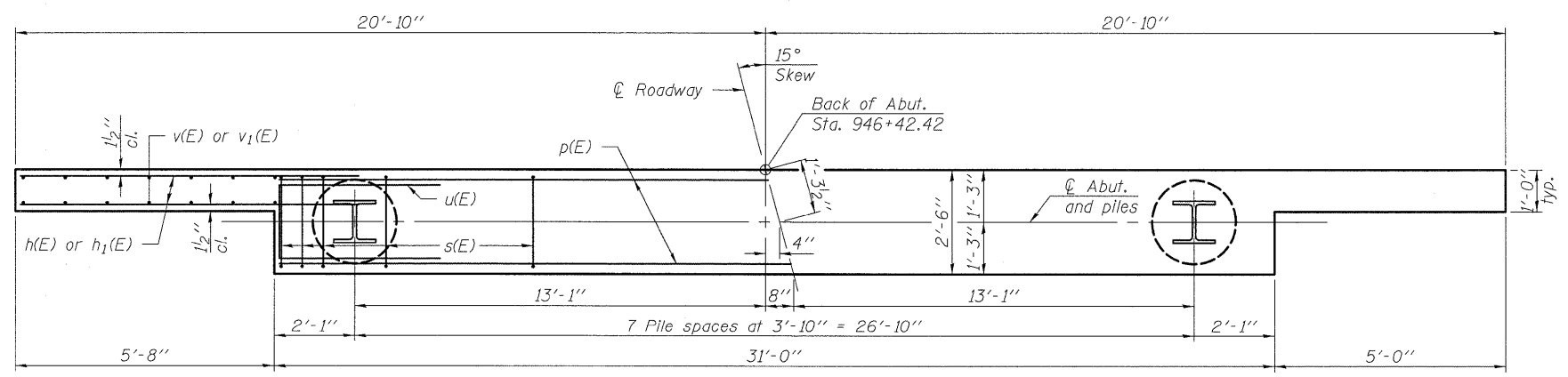
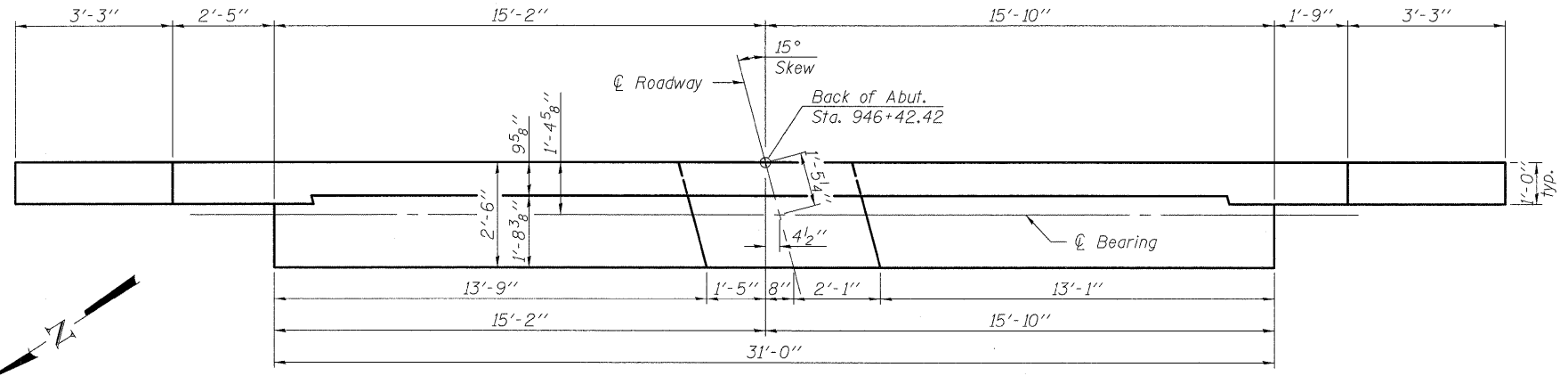
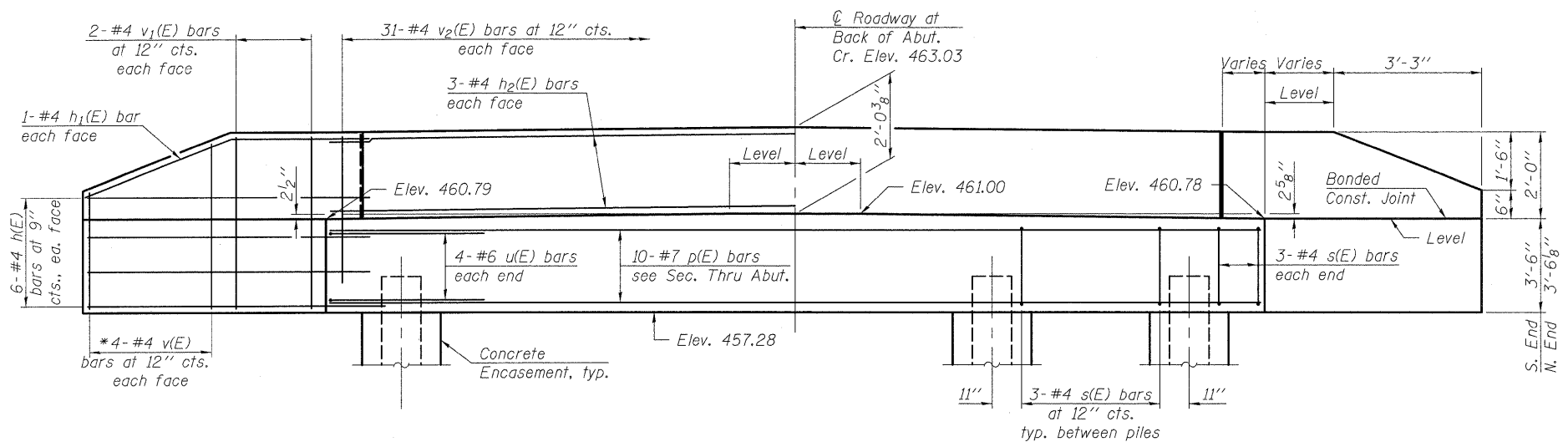


STATE OF ILLINOIS  
DEPARTMENT OF TRANSPORTATION



**BILL OF MATERIAL**

Bar	No.	Size	Length	Shape
h(E)	24	#4	8'-0"	—
h <sub>1</sub> (E)	4	#4	8'-3"	—
h <sub>2</sub> (E)	6	#4	30'-8"	—
p(E)	10	#7	30'-8"	—
s(E)	27	#4	11'-5"	□
u(E)	8	#6	11'-1"	□
v(E)	8	#4	8'-11"	—
v <sub>1</sub> (E)	8	#4	5'-2"	—
v <sub>2</sub> (E)	62	#4	3'-5"	—
Structure Excavation			Cu. Yd.	60
Concrete Structures			Cu. Yd.	14.3
Concrete Encasement			Cu. Yd.	2.8
Reinforcement Bars, Epoxy Coated			Pounds	1,460
Furnishing Steel Piles HP12x63			Foot	203
Driving Piles			Foot	203
Test Pile Steel HP12x63			Each	1
Pile Shoes			Each	8

The backwall and the portion of the wingwalls above the bonded construction joint shall be cast against the in-place beams.  
 Space reinforcement in cap to miss dowel bars.  
 For dowel rod placement details, see sheet 2 of 11.  
 For details of piles and Concrete Encasement, see sheet 10 of 11.

DESIGNED	EML
CHECKED	KAK
DRAWN	EML
CHECKED	KAK

**PILE DATA**

Type:	HP12x63 w/Pile Shoes
Nominal Required Bearing:	497 kips
Factored Resistance Available:	199 kips
Est. Length:	29'
No. Production Piles:	7
No. Test Piles:	1



SHEET NO. 7 11 SHEETS	F.A.S. RTE.	SECTION	COUNTY	TOTAL SHEETS	SHEET NO.
	836	07-00077-01-BR	WASHINGTON	27	15
FED. ROAD DIST. NO.			ILLINOIS FED. AID PROJECT		
CONTRACT NO. 97402					

**EAST ABUTMENT  
STRUCTURE NO. 095-3260**