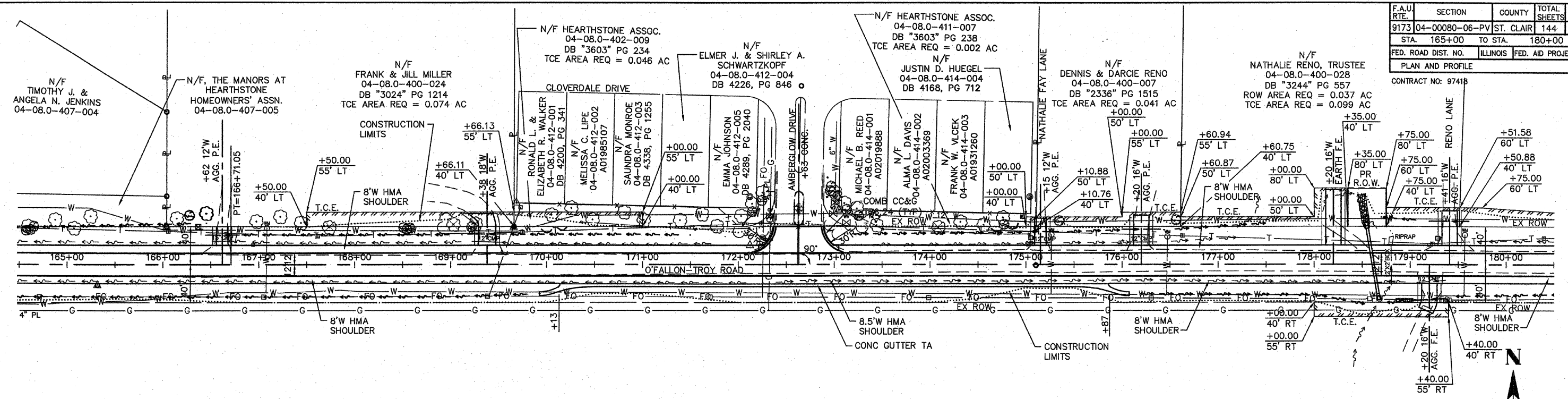


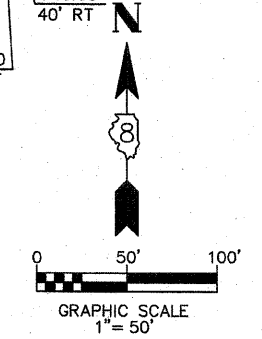
F.A.U. RTE.	SECTION	COUNTY	TOTAL SHEETS	SHEET NO.
9173	04-0080-06-PV	ST. CLAIR	144	21
STA. 165+00 TO STA. 180+00				
FED. ROAD DIST. NO.		ILLINOIS FED. AID PROJECT		

CONTRACT NO: 9741B

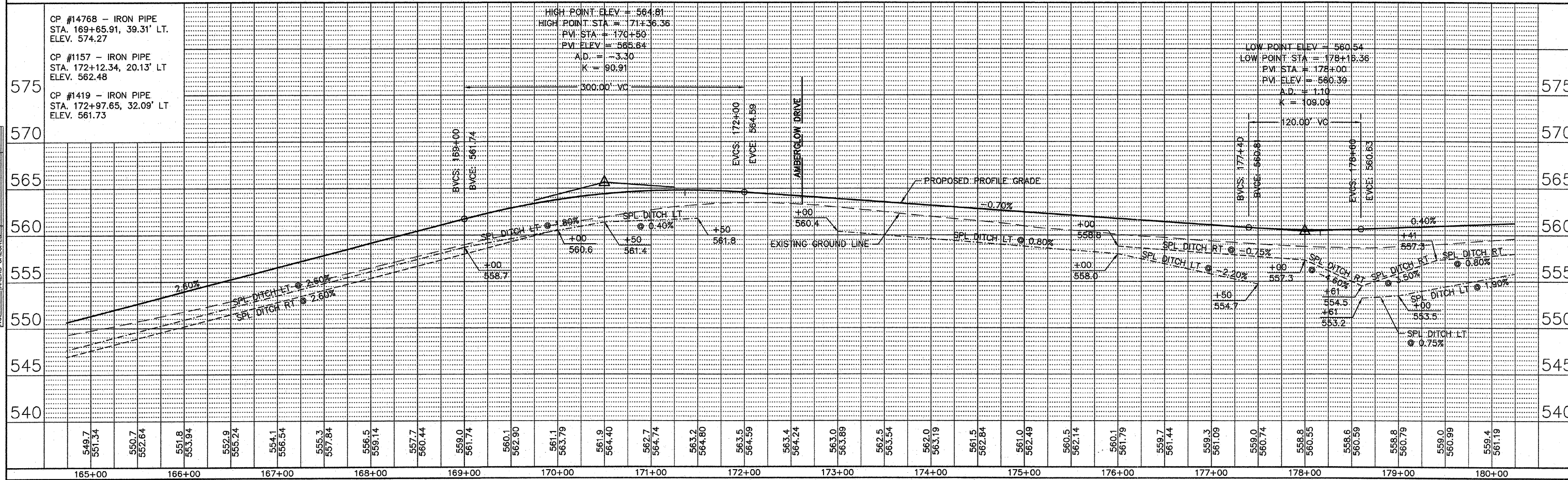
BY	DATE	NO.
FINAL SURVEY		
SURVEYED		
NOTE BOOK		
TEMPLATE		
AREAS		
CHECKED		



N/F
HENRY W. & WILMA M. BUSCH
04-17.0-200-003
DB "2623" PG 551
TCE AREA REQ = 0.048 AC



BY	DATE	NO.
ORIGINAL SURVEY		
TEMPLATE		
AREAS		
CHECKED		



O'FALLON-TROY ROAD PLAN & PROFILE SHEETS