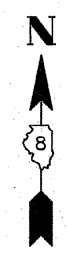
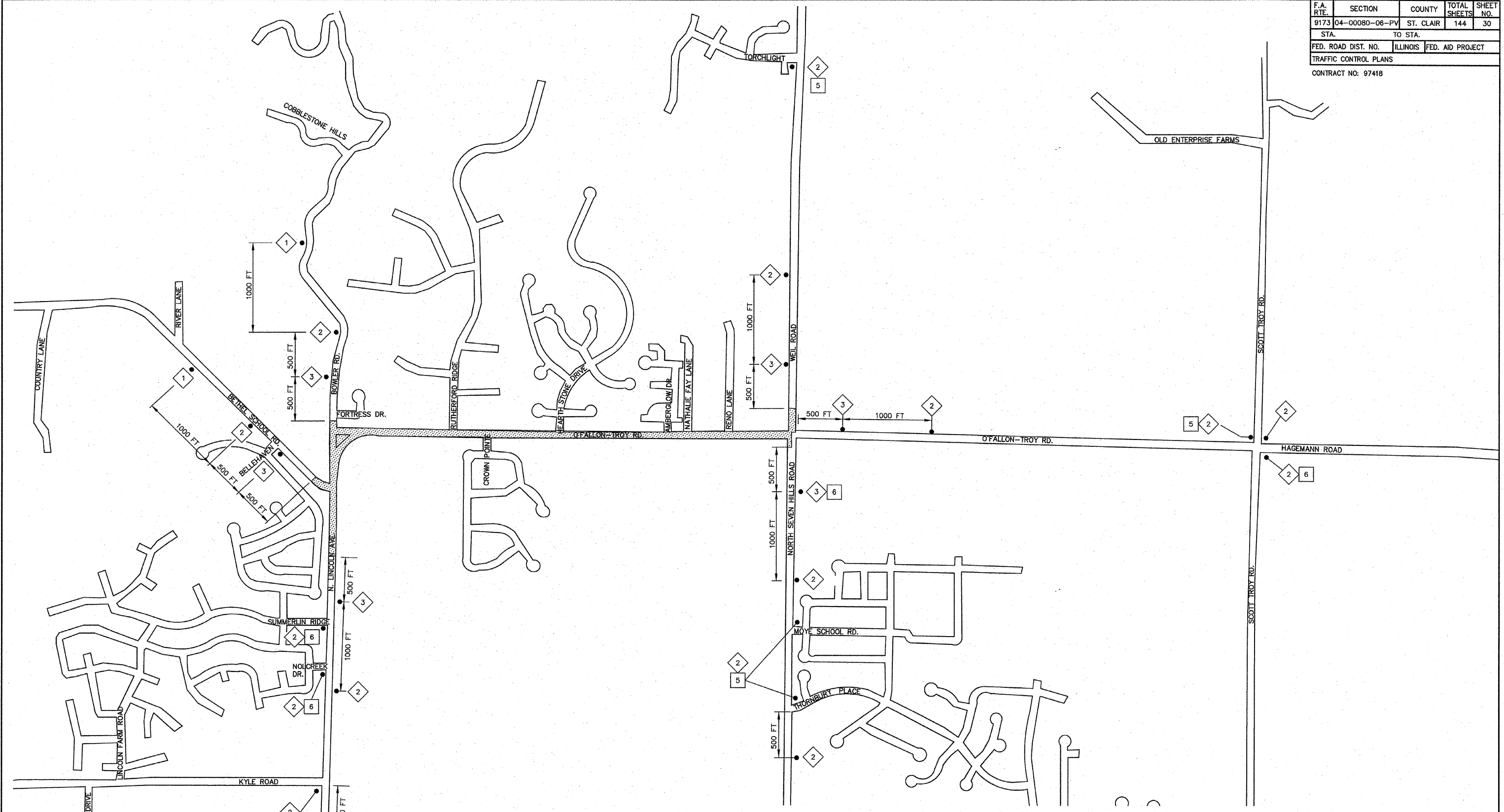


| | | | | |
|-----------------------|----------------|------------------|--------------|-----------|
| F.A. RTE. | SECTION | COUNTY | TOTAL SHEETS | SHEET NO. |
| 9173 | 04-00080-06-PV | ST. CLAIR | 144 | 30 |
| STA. | | TO STA. | | |
| FED. ROAD DIST. NO. | ILLINOIS | FED. AID PROJECT | | |
| TRAFFIC CONTROL PLANS | | | | |
| CONTRACT NO: 97418 | | | | |



LEGEND

| | | |
|---|---|--|
| <ul style="list-style-type: none"> 1 ROAD CONSTRUCTION AHEAD W20-1A 2 ROAD CLOSED AHEAD W20-3(0) 3 ROAD CLOSED 500 FT W20-1(0) | <ul style="list-style-type: none"> 4 TYPE III BARRICADES STAGGERED W/ R-11-4-6030 (ROAD CLOSED TO THRU TRAFFIC) SIGNS AND TYPE A LOW INTENSITY FLASHING LIGHTS 5 24" X 24" | <ul style="list-style-type: none"> 6 24" X 24" WORK ZONE |
|---|---|--|