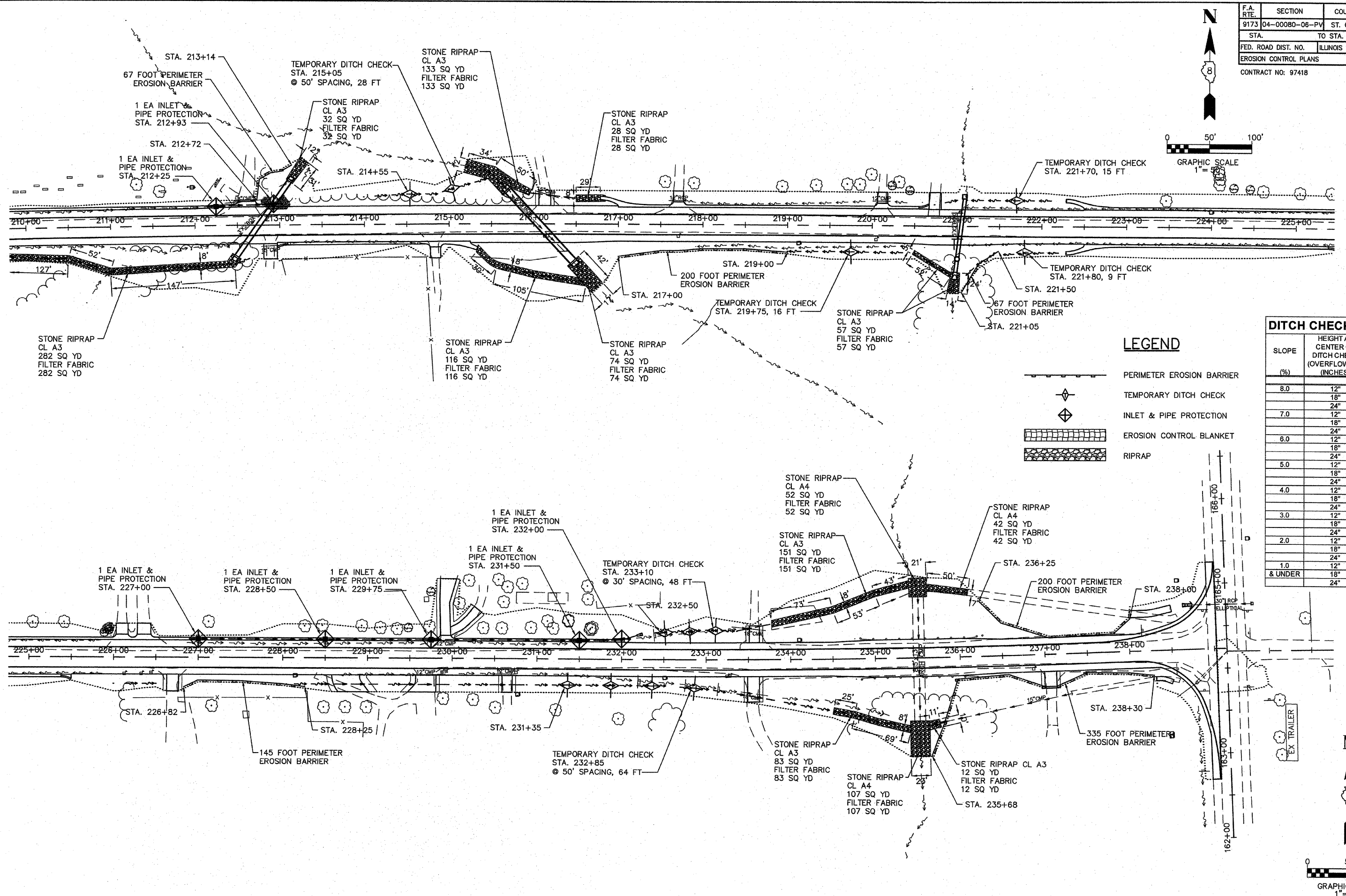
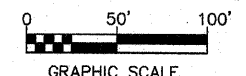


F.A. RTE.	SECTION	COUNTY	TOTAL SHEETS	SHEET NO.
9173	04-00080-06-PV	ST. CLAIR	144	49
STA.		TO STA.		
FED. ROAD DIST. NO.		ILLINOIS	FED. AID PROJECT	
EROSION CONTROL PLANS				
CONTRACT NO: 97418				



**LEGEND**

- PERIMETER EROSION BARRIER
- TEMPORARY DITCH CHECK
- INLET & PIPE PROTECTION
- EROSION CONTROL BLANKET
- RIPRAP

**DITCH CHECK SPACING**

SLOPE (%)	HEIGHT AT CENTER OF DITCH CHECK (OVERFLOW PT) (INCHES)	SPACING OF DITCH CHECK (FEET)
8.0	12"	10
	18"	20
	24"	25
7.0	12"	15
	18"	20
6.0	24"	30
	12"	15
	18"	25
5.0	24"	35
	12"	20
	18"	30
4.0	24"	40
	12"	25
	18"	35
3.0	24"	50
	12"	35
	18"	50
2.0	24"	65
	12"	50
	18"	75
1.0	24"	100
	12"	100
& UNDER	18"	150
	24"	195

