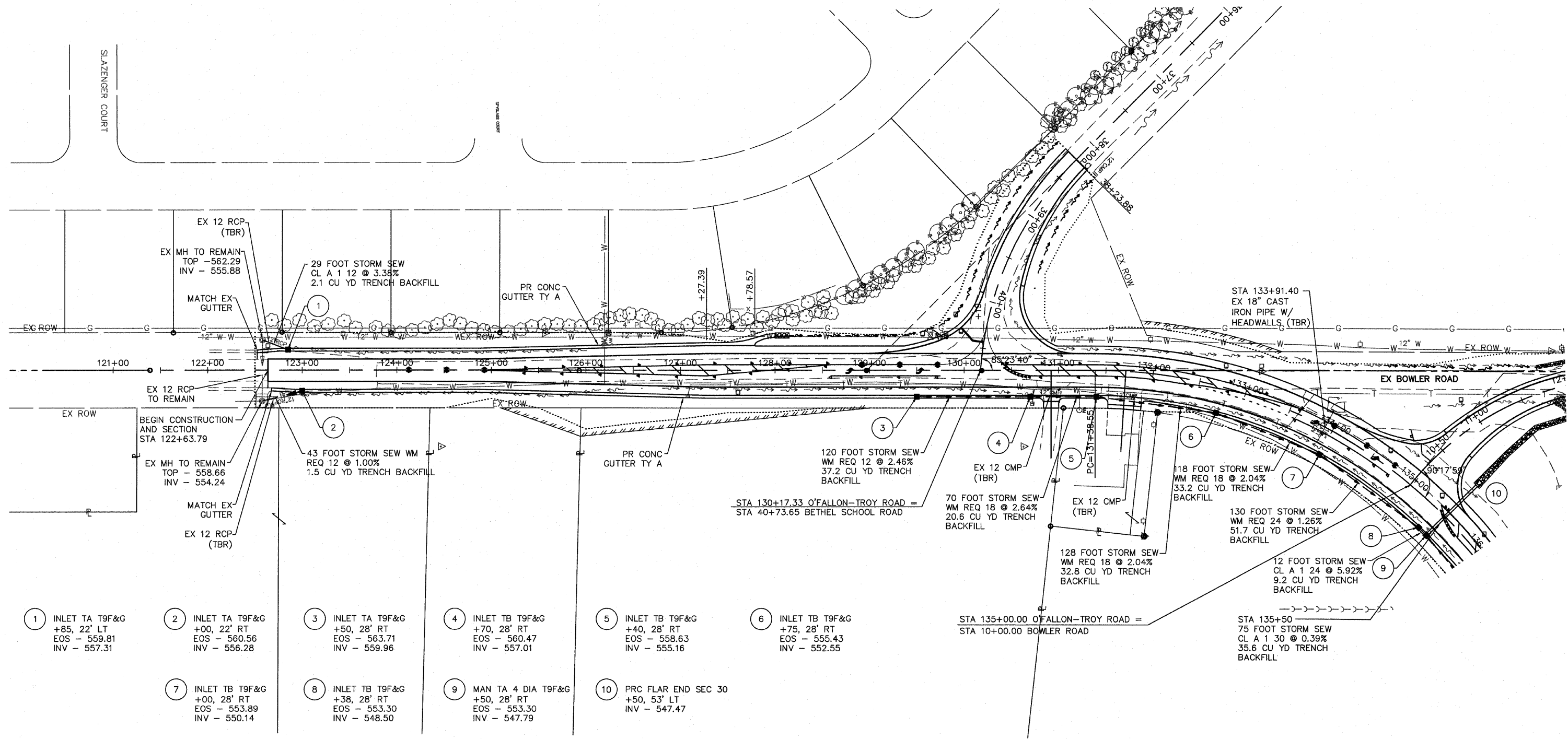
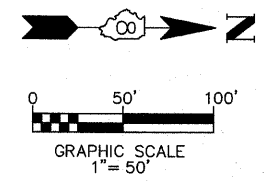


F.A. RTE.	SECTION	COUNTY	TOTAL SHEETS	SHEET NO.
9173	04-00080-06-PV	ST. CLAIR	144	50
STA. 120+00		TO STA. 135+00		
FED. ROAD DIST. NO.		ILLINOIS	FED. AID PROJECT	
STORM SEWER & DRAINAGE PLAN				
CONTRACT NO: 97418				



- 1 INLET TA T9F&G  
+85, 22' LT  
EOS - 559.81  
INV - 557.31
- 2 INLET TA T9F&G  
+00, 22' RT  
EOS - 560.56  
INV - 556.28
- 3 INLET TA T9F&G  
+50, 28' RT  
EOS - 563.71  
INV - 559.96
- 4 INLET TB T9F&G  
+70, 28' RT  
EOS - 560.47  
INV - 557.01
- 5 INLET TB T9F&G  
+40, 28' RT  
EOS - 558.63  
INV - 555.16
- 6 INLET TB T9F&G  
+75, 28' RT  
EOS - 555.43  
INV - 552.55
- 7 INLET TB T9F&G  
+00, 28' RT  
EOS - 553.89  
INV - 550.14
- 8 INLET TB T9F&G  
+38, 28' RT  
EOS - 553.30  
INV - 548.50
- 9 MAN TA 4 DIA T9F&G  
+50, 28' RT  
EOS - 553.30  
INV - 547.79
- 10 PRC FLAR END SEC 30  
+50, 53' LT  
EOS - 547.47



O'FALLON-TROY ROAD STORM SEWER & DRAINAGE PLAN