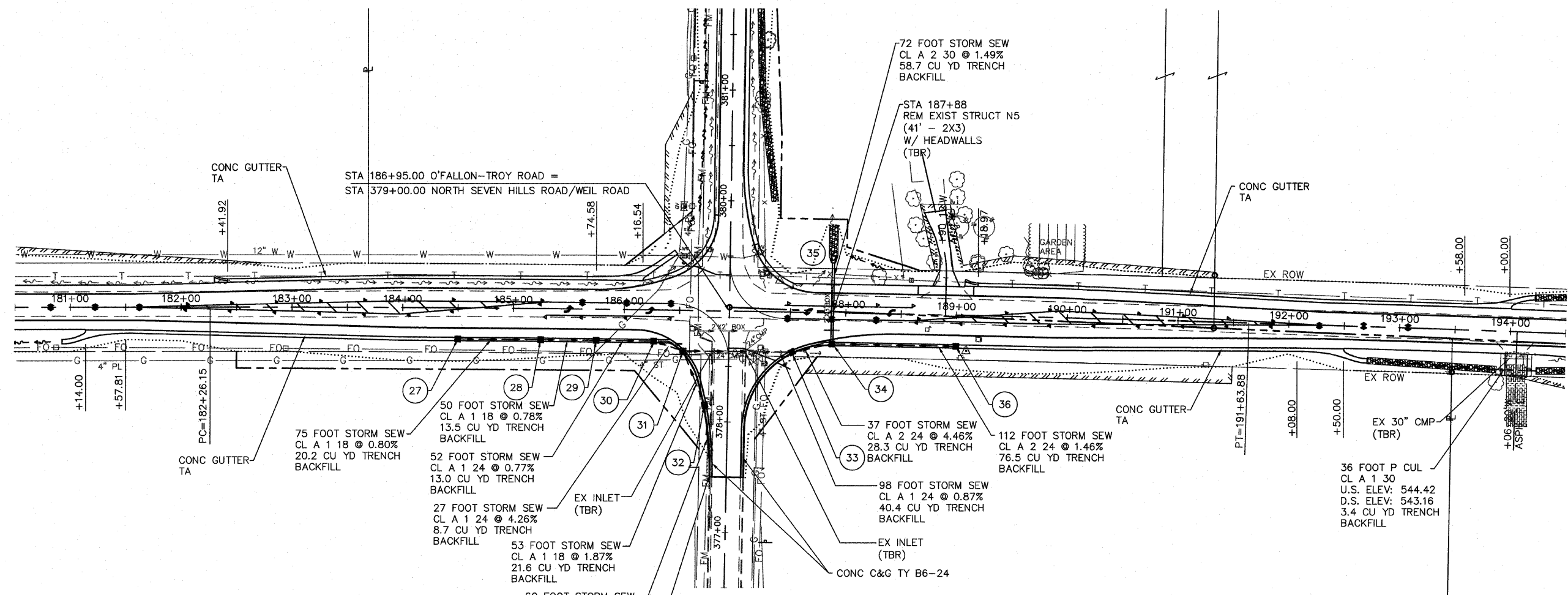


| | | | | |
|-----------------------------|----------------|----------------|------------------|-----------|
| F.A. RTE. | SECTION | COUNTY | TOTAL SHEETS | SHEET NO. |
| 9173 | 04-00080-06-PV | ST. CLAIR | 144 | 58 |
| STA. 180+00 | | TO STA. 195+00 | | |
| FED. ROAD DIST. NO. | | ILLINOIS | FED. AID PROJECT | |
| STORM SEWER & DRAINAGE PLAN | | | | |

CONTRACT NO: 97418



- 27 INLET TA T9F&G
+50, 28' RT
EOS - 559.98
INV - 556.64
- 28 INLET TB T9F&G
+25, 28' RT
EOS - 559.38
INV - 556.04
- 29 INLET TB T9F&G
+75, 28' RT
EOS - 558.98
INV - 555.65
- 30 INLET TB T9F&G
+27, 28' RT
EOS - 558.56
INV - 555.25

- 31 INLET TB T3F&G
+53.6, 36.5' RT
EOP - 557.89
INV - 554.10
- 32 INLET TB T3F&G
+73.9, 84.9' RT
EOP - 558.58
INV - 555.09

- 33 INLET TB T3F&G
+52, 36' RT
EOP - 557.25
INV - 553.25
- 34 MAN TA 4 DIA T9F&G
+88, 28' RT
EOS - 557.44
INV - 551.60 (S)
INV - 551.00
- 35 PRC FLAR END SEC 30
+88, 51.3' LT
INV - 549.81
- 36 INLET TB T9F&G
+00, 28' RT
EOS - 556.38
INV - 552.63

CP #1156 - IRON PIPE
STA. 189+09.38, 31.81' RT.
ELEV. 562.58

