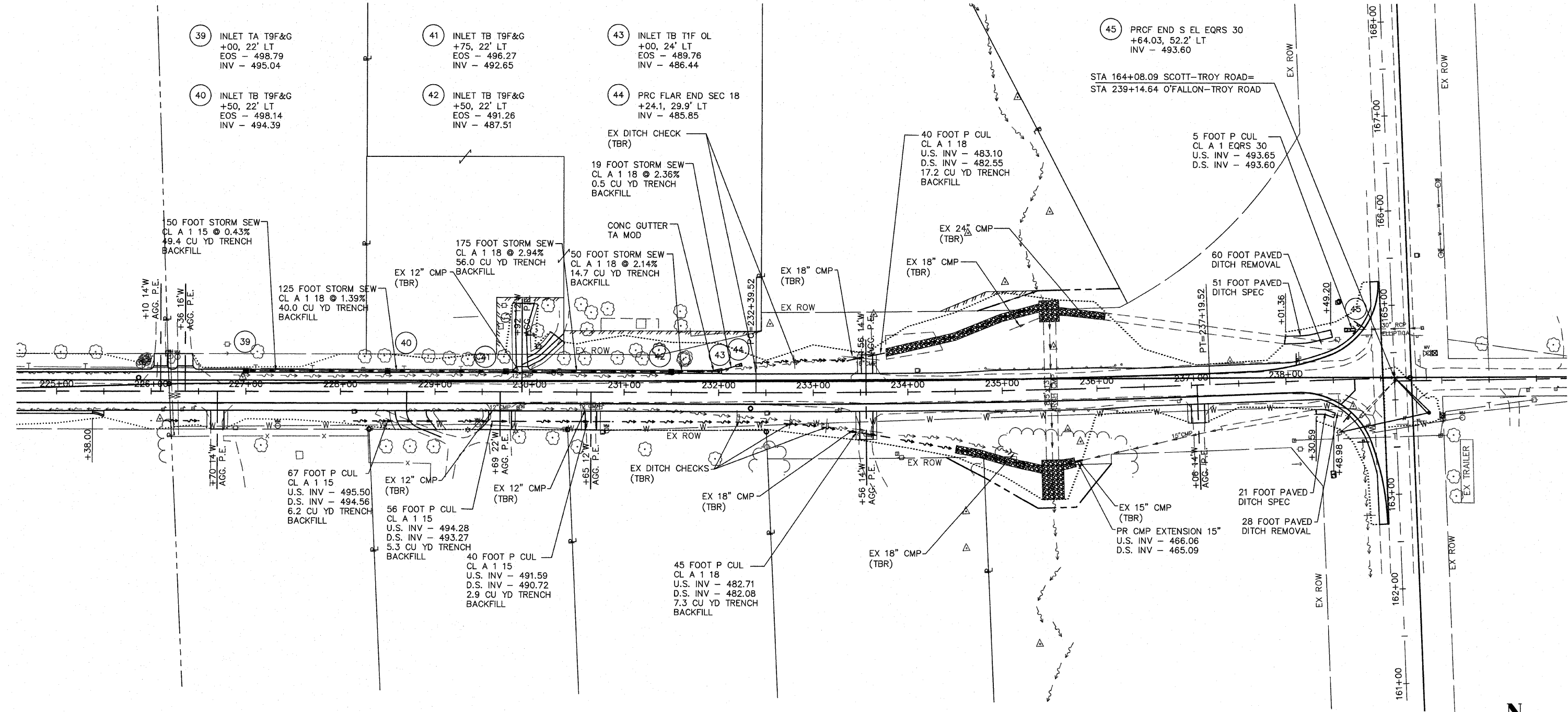


F.A. RTE.	SECTION	COUNTY	TOTAL SHEETS	SHEET NO.
9173	04-00080-06-PV	ST. CLAIR	144	64
STA. 225+00 TO STA. 240+00				
FED. ROAD DIST. NO. ILLINOIS FED. AID PROJECT				
STORM SEWER & DRAINAGE PLAN				
CONTRACT NO: 97418				



39 INLET TA T9F&G
+00, 22' LT
EOS - 498.79
INV - 495.04

40 INLET TB T9F&G
+50, 22' LT
EOS - 498.14
INV - 494.39

41 INLET TB T9F&G
+75, 22' LT
EOS - 496.27
INV - 492.65

42 INLET TB T9F&G
+50, 22' LT
EOS - 491.26
INV - 487.51

43 INLET TB T1F OL
+00, 24' LT
EOS - 489.76
INV - 486.44

44 PRC FLAR END SEC 18
+24.1, 29.9' LT
INV - 485.85

45 PRCF END S EL EQRS 30
+64.03, 52.2' LT
INV - 493.60

STA 164+08.09 SCOTT-TROY ROAD=
STA 239+14.64 O'FALLON-TROY ROAD

CP #14957 - IRON PIPE
STA. 226+09.57, 28.91' RT.
ELEV. 498.59

CP #1160 - IRON PIPE
STA. 238+70.28, 28.38' RT.
ELEV. 495.35

