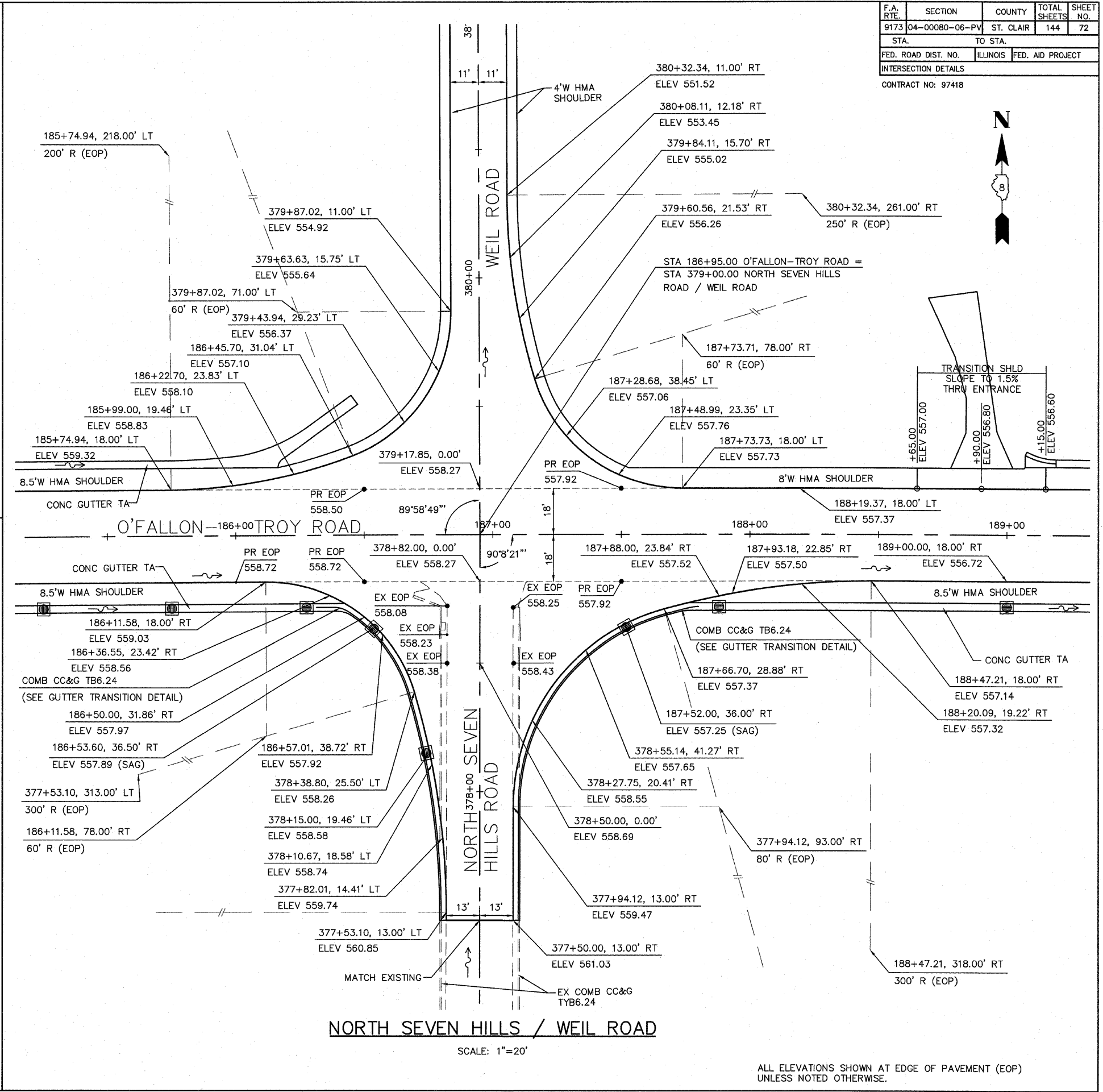
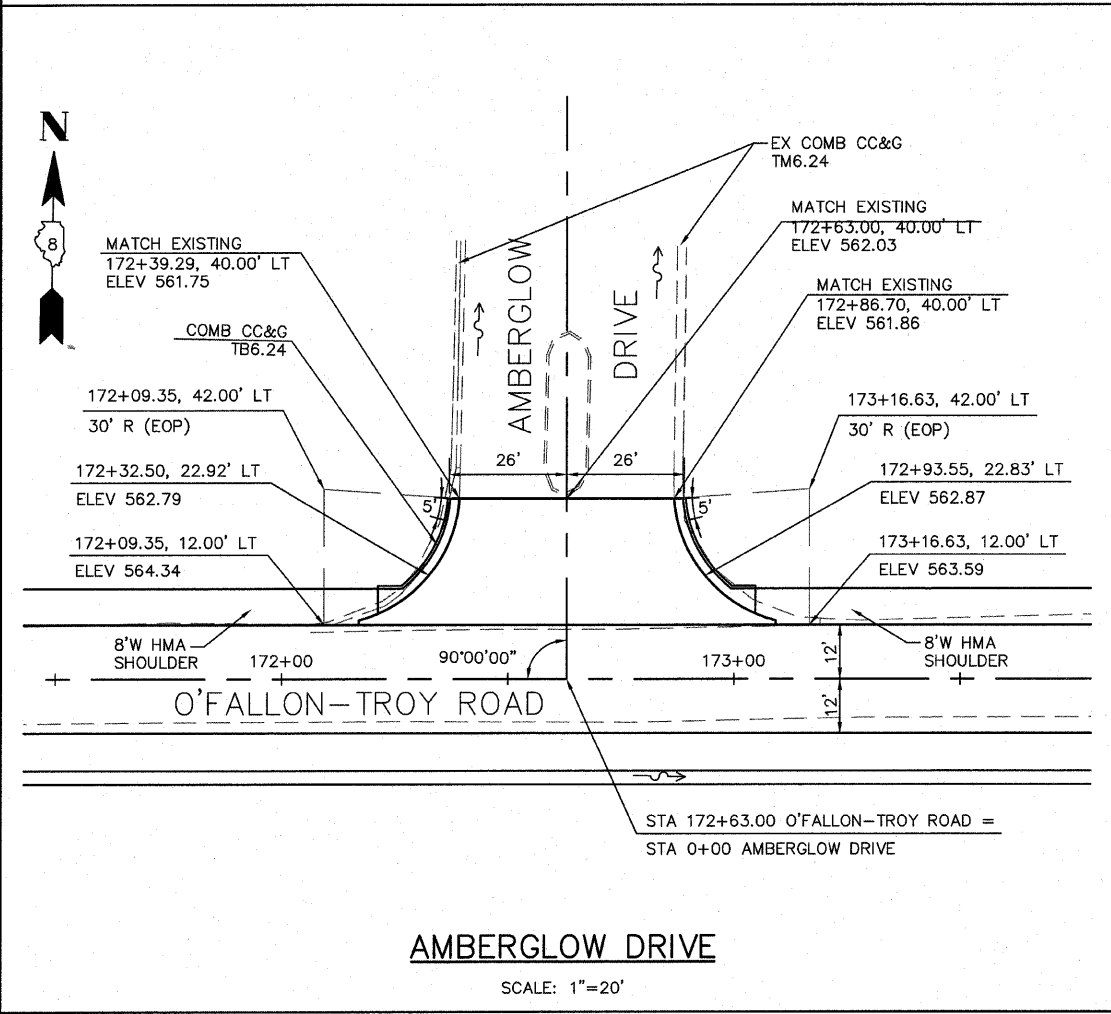
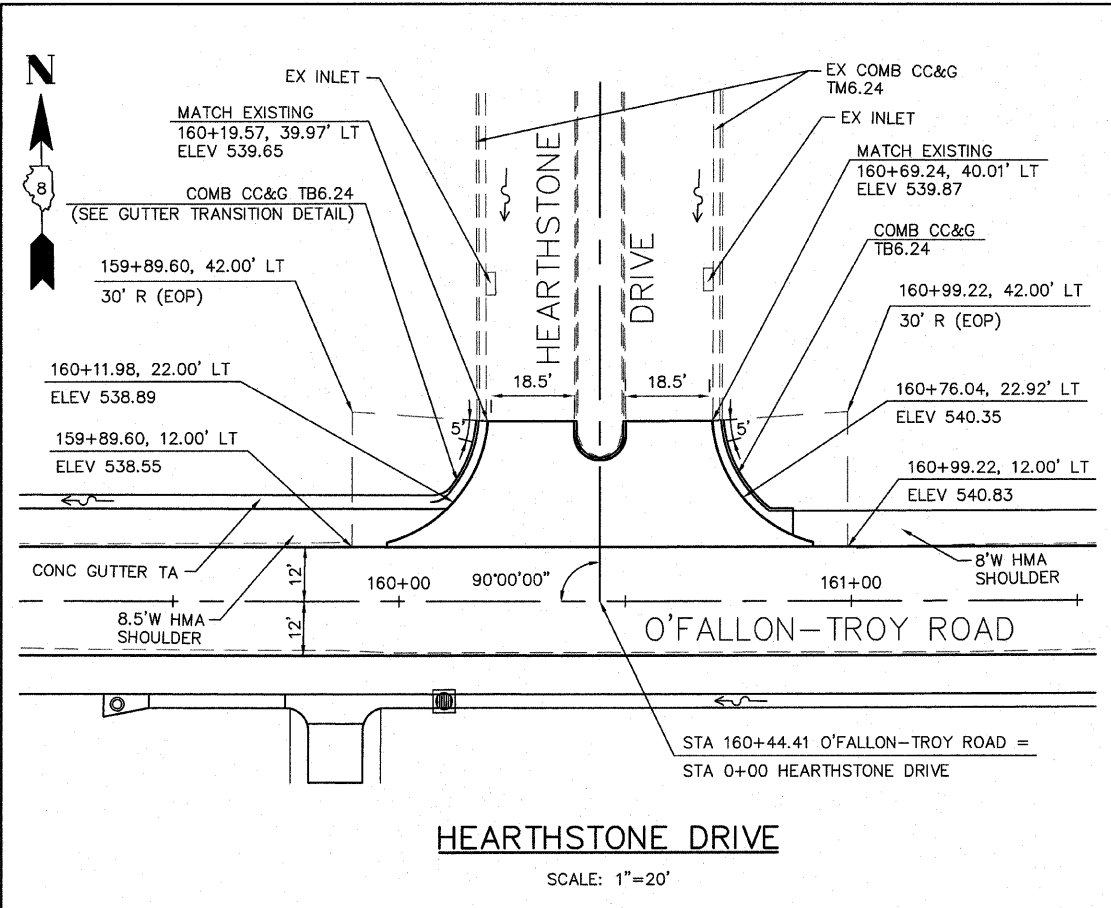


F.A. RTE.	SECTION	COUNTY	TOTAL SHEETS	SHEET NO.
9173	04-00080-06-PV	ST. CLAIR	144	72
STA. TO STA.				
FED. ROAD DIST. NO.		ILLINOIS	FED. AID PROJECT	
INTERSECTION DETAILS				
CONTRACT NO: 97418				



ALL ELEVATIONS SHOWN AT EDGE OF PAVEMENT (EOP) UNLESS NOTED OTHERWISE.