

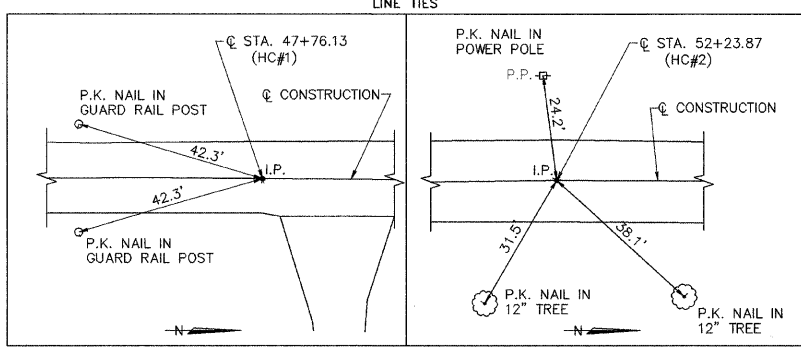
ROUTE NO.	SECTION	COUNTY	TOTAL SHEETS	SHEET NO.
T.R. 254	06-14118-00-BR	MARION	16	3
FEDERAL AID PROJECT		ILLINOIS	PROJECT	
CONTRACT NO. 97434				

HORIZONTAL CONTROL COORDINATES

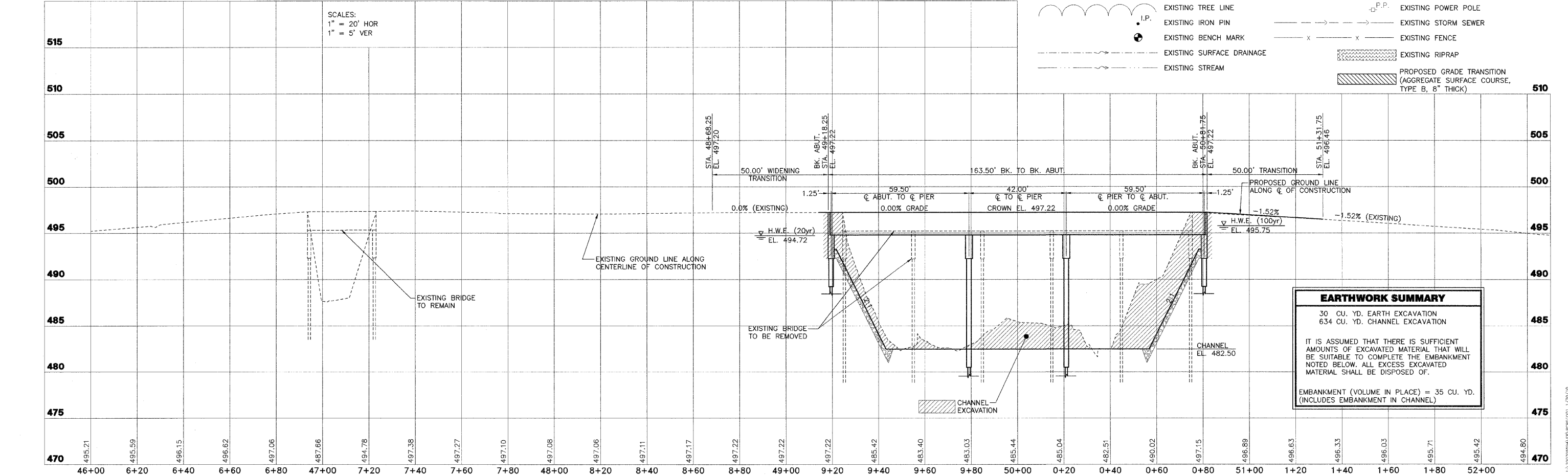
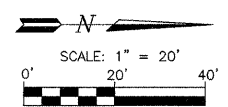
POINT	LOCATION	N. COOR.	E. COOR.
HC#1 (IRON PIN)	Q STA. 47+76.13	4608.36	5013.60
HC#2 (IRON PIN)	Q STA. 52+23.87	5056.08	5012.62

BENCH MARK COORDINATES

POINT	LOCATION	ELEV.
BM#1 (R.R. SPIKE IN POWER POLE)	25.19' LT., STA. 49+24.71	495.06
BM#2 (R.R. SPIKE IN POWER POLE)	24.08' LT., STA. 52+20.58	492.83



- 3000 SF EXISTING AREA OF OVER THE ROAD FLOW BELOW HWE 20
- 4500 SF EXISTING AREA OF OVER THE ROAD FLOW BELOW HWE 100
- 3000 SF PROPOSED AREA OF OVER THE ROAD FLOW BELOW HWE 20
- 4500 SF PROPOSED AREA OF OVER THE ROAD FLOW BELOW HWE 100
- 1400 SF EXISTING BRIDGE OPENING (AT RIGHT ANGLES) BELOW HWE 20
- 1500 SF EXISTING BRIDGE OPENING (AT RIGHT ANGLES) BELOW HWE 100
- 1600 SF PROPOSED BRIDGE OPENING (AT RIGHT ANGLES) BELOW HWE 20
- 1750 SF PROPOSED BRIDGE OPENING (AT RIGHT ANGLES) BELOW HWE 100



LEGEND

	EXISTING TREE		EXISTING OVERHEAD ELECTRIC LINE
	EXISTING TREE LINE		EXISTING POWER POLE
	EXISTING IRON PIN		EXISTING STORM SEWER
	EXISTING BENCH MARK		EXISTING FENCE
	EXISTING SURFACE DRAINAGE		EXISTING RIPRAP
	EXISTING STREAM		PROPOSED GRADE TRANSITION (AGGREGATE SURFACE COURSE, TYPE B, 8" THICK)

EARTHWORK SUMMARY

30 CU. YD. EARTH EXCAVATION
634 CU. YD. CHANNEL EXCAVATION

IT IS ASSUMED THAT THERE IS SUFFICIENT AMOUNTS OF EXCAVATED MATERIAL THAT WILL BE SUITABLE TO COMPLETE THE EMBANKMENT NOTED BELOW. ALL EXCESS EXCAVATED MATERIAL SHALL BE DISPOSED OF.

EMBANKMENT (VOLUME IN PLACE) = 35 CU. YD. (INCLUDES EMBANKMENT IN CHANNEL)