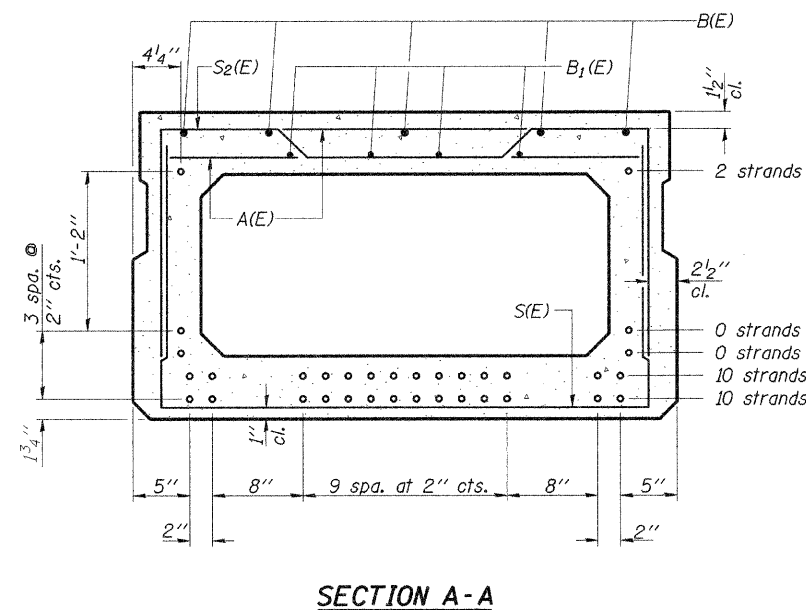


Note: Spacing of S(E) and S₂(E) bars may be adjusted up to 4" in the immediate area of the transverse tie diaphragms to miss the block outs for the transverse ties.



Note: Place the number of strands specified in each row symmetrically about the centerline of beam in the permissible strand locations shown.

Strands: 22 - 1/2"φ strands.

BAR LIST
ONE BEAM ONLY
(For information only)

Bar	No.	Size	Length	Shape
A(E)	54	#4	3'-7"	—
B(E)	5	#5	59'-7"	—
B ₁ (E)	4	#4	59'-7"	—
S(E)	84	#4	7'-5"	⌌
S ₁ (E)	10	#4	6'-11"	⌌
S ₂ (E)	74	#4	7'-2"	⌌
U(E)	12	#5	4'-6"	⌌
U ₁ (E)	4	#4	6'-0"	⌌

Note: See sheet SLM-PD1-2748-0D for additional details.
See sheet SLM-CS-2827-60 for Bill of Material.

<p>2524 S. Broadway Salem, Illinois 62881 618.548.3500</p> <p>IL Design Firm Reg. No. 184-003706 www.aecom.com</p>	<p>SLM-PD1-2748-0</p> <p>P.P.C. DECK BEAM DETAILS AND SECTIONS</p>
	<p>28' ROADWAY 27" x 48" BEAMS 0° SKEW</p>
<p>Date: 01/20/10 Design: Drawn: Job No.: 200705594</p>	