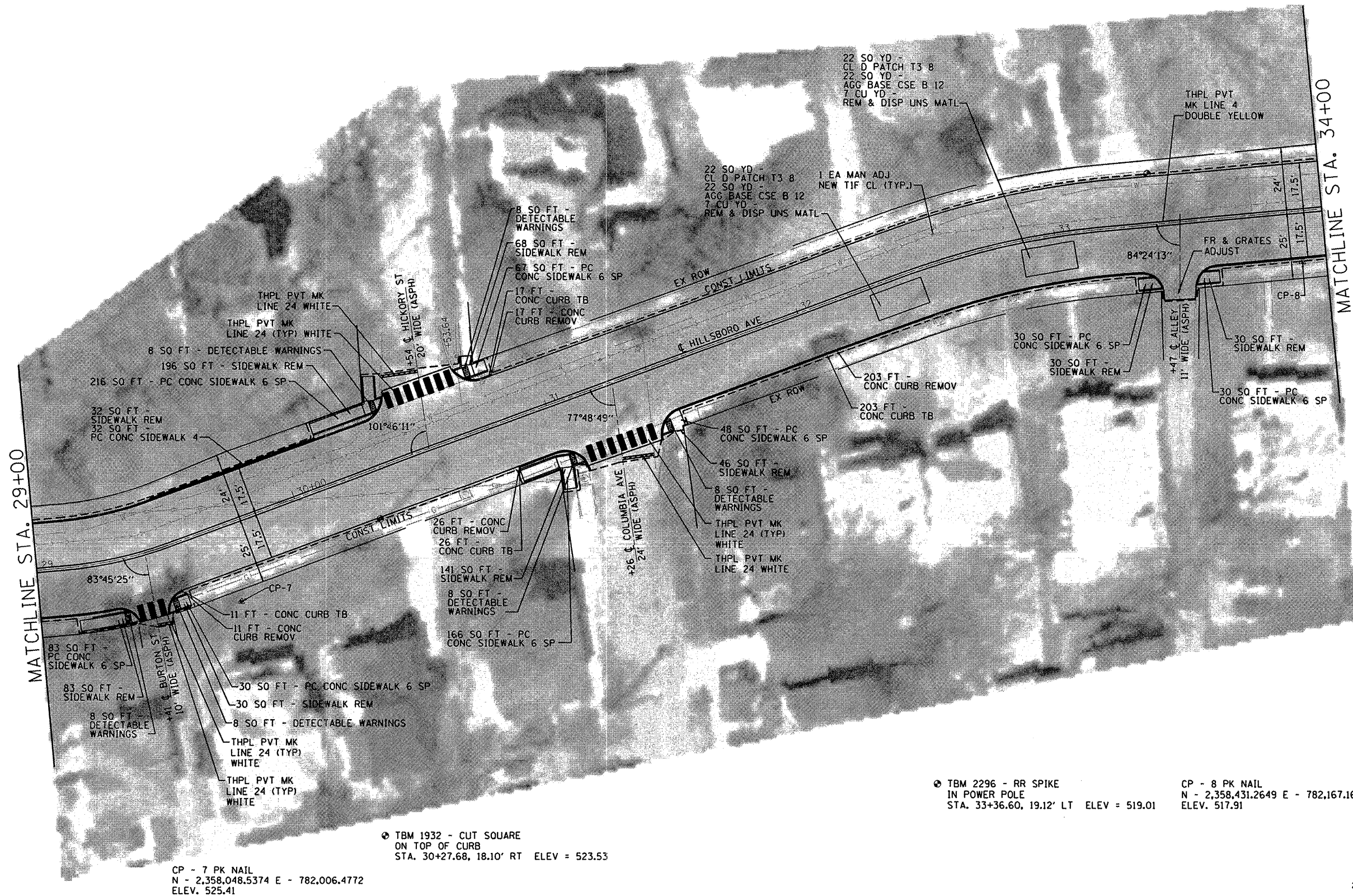


DATE	
BY	
SERIALIZED	
PLOTTED	
GRADES CHECKED	
STRUCTURE NOTATIONS CHECKED	
NOTE BOOK NO.	
CADD FILE NAME	

DATE	
BY	
SERIALIZED	
PLOTTED	
GRADES CHECKED	
STRUCTURE NOTATIONS CHECKED	
NOTE BOOK NO.	
CADD FILE NAME	

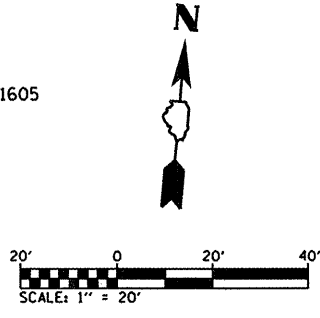


CP - 7 PK NAIL  
 N - 2,358,048.5374 E - 782,006.4772  
 ELEV. 525.41

⊙ TBM 1932 - CUT SQUARE  
 ON TOP OF CURB  
 STA. 30+27.68, 18.10' RT ELEV = 523.53

⊙ TBM 2296 - RR SPIKE  
 IN POWER POLE  
 STA. 33+36.60, 19.12' LT ELEV = 519.01

CP - 8 PK NAIL  
 N - 2,358,431.2649 E - 782,167.1605  
 ELEV. 517.91



FILE NAME = H:\P\26874\microstation\674 pp01.dgn	USER NAME = t-ravis	DESIGNED -	REVISED -	<b>STATE OF ILLINOIS DEPARTMENT OF TRANSPORTATION</b>	<b>PLAN SHEET</b>		F.A.U. RTE. 8876	SECTION 08-00098-00-PV	COUNTY MADISON	TOTAL SHEETS 17	SHEET NO. 8	
	PLOT SCALE = 40.0000' / IN.	DRAWN -	REVISED -		SCALE: 1"=20'	SHEET NO. 4 OF 5 SHEETS	STA. 29+00 TO STA. 34+00	HILLSBORO AVENUE RESURFACING		CONTRACT NO. 97437		
	PLOT DATE = 2/19/2010	CHECKED -	REVISED -		ILLINOIS FED. AID PROJECT							
		DATE -	REVISED -									