

SUMMARY OF QUANTITIES			CONSTRUCTION TYPE CODE					
CODE NO	ITEM	UNIT	TOTAL QUANTITIES URBAN	80% FED 20% STATE ROADWAY 0004	80% FED 13.3% STATE 6.7% LAKE COUNTY T.S. SIG. 0021	100% ANTIOCH FIRE DEPT. EVP 0021	100% LAKE COUNTY T.S. SIG. 0021	80% FED 20% STATE RETAINING WALL 0044
20100110	TREE REMOVAL (6 TO 15 UNITS DIAMETER)	UNIT	386	386				
20100210	TREE REMOVAL (OVER 15 UNITS DIAMETER)	UNIT	98	98				
20101000	TEMPORARY FENCE	FOOT	1587	1587				
20101300	TREE PRUNING (1 TO 10 INCH DIAMETER)	EACH	30	30				
20101350	TREE PRUNING (OVER 10 INCH DIAMETER)	EACH	40	40				
20200100	EARTH EXCAVATION	CU YD	811	811	⚠			
20201200	REMOVAL AND DISPOSAL OF UNSUITABLE MATERIAL	CU YD	706	706				
20400800	FURNISHED EXCAVATION	CU YD	1573.7	1573.7	⚠			
20800150	TRENCH BACKFILL	CU YD	775.94	775.94				
21001000	GEOTECHNICAL FABRIC FOR GROUND STABILIZATION	SO YD	5283	5283				
21101505	TOPSOIL EXCAVATION AND PLACEMENT	CU YD	1682	1682				
* 25000210	SEEDING, CLASS 2A	ACRE	0.7	0.7				
* 25000400	NITROGEN FERTILIZER NUTRIENT	POUND	64.9	64.9				
* 25000600	POTASSIUM FERTILIZER NUTRIENT	POUND	64.9	64.9				

SUMMARY OF QUANTITIES			CONSTRUCTION TYPE CODE					
CODE NO	ITEM	UNIT	TOTAL QUANTITIES URBAN	80% FED 20% STATE ROADWAY 0004	80% FED 13.3% STATE 6.7% LAKE COUNTY T.S. SIG. 0021	100% ANTIOCH FIRE DEPT. EVP 0021	100% LAKE COUNTY T.S. SIG. 0021	80% FED 20% STATE RETAINING WALL 0044
25100115	MULCH, METHOD 2	ACRE	1.43	1.43				
* 25100630	EROSION CONTROL BLANKET	SO YD	6897	6897				
28000250	TEMPORARY EROSION CONTROL SEEDING	POUND	142	142				
28000305	TEMPORARY DITCH CHECKS	FOOT	60	60				
28000400	PERIMETER EROSION BARRIER	FOOT	1459	1459				
28000500	INLET AND PIPE PROTECTION	EACH	1	1				
28000510	INLET FILTERS	EACH	14	14				
28100107	STONE RIPRAP, CLASS A4	SO YD	13.2	13.2	⚠			
28200200	FILTER FABRIC	SO YD	13.2	13.2				
30300001	AGGREGATE SUBGRADE IMPROVEMENT	CU YD	608	608				
30300112	AGGREGATE SUBGRADE IMPROVEMENT 12"	SO YD	3380	3380				
35501308	HOT-MIX ASPHALT BASE COURSE, 6"	SO YD	383	383				
35501314	HOT-MIX ASPHALT BASE COURSE, 7 1/2"	SO YD	83	83				
35501315	HOT-MIX ASPHALT BASE COURSE, 7 3/4"	SO YD	1742	1742				
35501316	HOT-MIX ASPHALT BASE COURSE, 8"	SO YD	231	231				
35600706	HOT-MIX ASPHALT BASE COURSE WIDEING, 7 1/2"	SO YD	378	378				

* SPECIALTY ITEMS

⚠ REVISED SHEET 4/13/2021 REV-SEP

FILE NAME =	USER NAME = kalorm	DESIGNED -	REVISED -
pw:\planroom\dtd\illinois\gov\PI001\Documents\DOT\Files\District\Projects\P171909\CAD\Drawn\Design\P171909-sta-5-DRAWN		CHECKED -	REVISED -
		DATE -	REVISED -

STATE OF ILLINOIS
DEPARTMENT OF TRANSPORTATION

IL. ROUTE 173 AT NORTH LAKE ST
SUMMARY OF QUANTITIES

F.A.P. RTE.	SECTION	COUNTY	TOTAL SHEETS	SHEET NO.
303	(134 & 134X) N	LAKE	129	4
CONTRACT NO. 60V39				

SCALE: SHEET NO. OF SHEETS STA. TO STA.

FED. ROAD DIST. NO. 1 ILLINOIS FED. AID PROJECT

SUMMARY OF QUANTITIES			TOTAL QUANTITIES URBAN	CONSTRUCTION TYPE CODE				
CODE NO	ITEM	UNIT		80% FED 20% STATE ROADWAY 0004	80% FED 13.3% STATE 6.7% LAKE COUNTY T.S. SIG. 0021	100% ANTIOCH FIRE DEPT. EVP 0021	100% LAKE COUNTY T.S. SIG. 0021	80% FED 20% STATE RETAINING WALL 0044
35600707	HOT-MIX ASPHALT BASE COURSE WIDENING, 7 3/4"	SO YD	142	142				
40600290	BITUMINOUS MATERIALS (TACK COAT)	POUND	6880	6880				
40600400	MIXTURE FOR CRACKS, JOINTS, AND FLANGEWAYS	TON	13	13				
40600982	HOT-MIX ASPHALT SURFACE REMOVAL - BUTT JOINT	SO YD	69	69				
40601005	HOT-MIX ASPHALT REPLACEMENT OVER PATCHES	TON	92	92	△			
40603085	HOT-MIX ASPHALT BINDER COURSE, IL-19.0, N70	TON	209	209				
40603090	HOT-MIX ASPHALT BINDER COURSE, IL-19.0, N90	TON	565	565				
40603200	POLYMERIZED HOT-MIX ASPHALT BINDER COURSE, IL-4.75, N50	TON	365	365				
40604060	HOT-MIX ASPHALT SURFACE COURSE, IL-9.5, MIX "D", N50	TON	69	69				
40604062	HOT-MIX ASPHALT SURFACE COURSE, IL-9.5, MIX "D", N70	TON	487	487				
40605026	POLYMERIZED HOT-MIX ASPHALT SURFACE COURSE, STONE MATRIX ASPHALT, 9.5, MIX "F", N80	TON	824	824				
42001300	PROTECTIVE COAT	SO YD	858	858				

SUMMARY OF QUANTITIES			TOTAL QUANTITIES URBAN	CONSTRUCTION TYPE CODE				
CODE NO	ITEM	UNIT		80% FED 20% STATE ROADWAY 0004	80% FED 13.3% STATE 6.7% LAKE COUNTY T.S. SIG. 0021	100% ANTIOCH FIRE DEPT. EVP 0021	100% LAKE COUNTY T.S. SIG. 0021	80% FED 20% STATE RETAINING WALL 0044
42300200	PORTLAND CEMENT CONCRETE DRIVEWAY PAVEMENT, 6 INCH	SO YD	151	151				
44000159	HOT-MIX ASPHALT SURFACE REMOVAL, 2 1/2"	SO YD	1723	1723				
44000200	DRIVEWAY PAVEMENT REMOVAL	SO YD	1260	1260				
44000500	COMBINATION CURB AND GUTTER REMOVAL	FOOT	1891	1891				
44004250	PAVED SHOULDER REMOVAL	SO YD	1362	1362				
44002232	HOT MIX ASPHALT REMOVAL OVER PATCHES, 8"	SQ YD	205	205	△			
44201692	CLASS D PATCHES, TYPE II, 4 INCH	SO YD	91	91				
44201694	CLASS D PATCHES, TYPE III, 4 INCH	SO YD	57	57				
44201741	CLASS D PATCHES, TYPE II, 8 INCH	SO YD	178	178	△			
48101620	AGGREGATE SHOULDER, TYPE B 10"	SQ YD	68.4	68.4				
50104400	CONCRETE HEADWALL REMOVAL	EACH	2	2				
50105220	PIPE CULVERT REMOVAL	FOOT	133	133				
50300225	CONCRETE STRUCTURES	CU YD	1.8				1.8	
50500505	STUD SHEAR CONNECTORS	EACH	20				20	△
50800205	REINFORCEMENT BARS, EPOXY COATED	POUND	160				160	
52200015	PERMANENT SHEET PILING	SO FT	48972				48972	

* SPECIALTY ITEMS

FILE NAME =	USER NAME = kalorm	DESIGNED -	REVISED -
pw:\planroom\dtd\illinois\gov\PI1001\Documents\VDOT	Office\District\Projects\PI1909\CAD\Drawn\Design\PI1909-st	DRAWN -	REVISED -
	PLOT SCALE = 100,000' / 1in.	CHECKED -	REVISED -
	PLOT DATE = 1/27/2021	DATE -	REVISED -

STATE OF ILLINOIS
DEPARTMENT OF TRANSPORTATION

IL ROUTE 173 AT NORTH LAKE ST
SUMMARY OF QUANTITIES

SCALE: SHEET NO. OF SHEETS STA. TO STA.

REVISED SHEET 4/13/2021		REV-SEP	
F.A.P. RTE.	SECTION	COUNTY	TOTAL SHEETS
303	(134 & 134XIN)	LAKE	129
			5
CONTRACT NO. 60V39			
FED. ROAD DIST. NO. 1 ILLINOIS FED. AID PROJECT			

SUMMARY OF QUANTITIES			CONSTRUCTION TYPE CODE					
CODE NO	ITEM	UNIT	TOTAL QUANTITIES URBAN	80% FED 20% STATE ROADWAY 0004	80% FED 13.3% STATE 6.7% LAKE COUNTY T.S. SIG. 0021	100% ANTI OCH FIRE DEPT. EVP 0021	100% LAKE COUNTY T.S. SIG. 0021	80% FED 20% STATE RETAINING WALL 0044
54213657	PRECAST REINFORCED CONCRETE FLARED END SECTIONS 12"	EACH	2	2				
54213660	PRECAST REINFORCED CONCRETE FLARED END SECTIONS 15"	EACH	4	4				
54261224	CONCRETE END SECTION, STANDARD 542001, 24", 1:2	EACH	3	3				
542A0217	PIPE CULVERTS, CLASS A, TYPE 1 12"	FOOT	40	40				
542A0220	PIPE CULVERTS, CLASS A, TYPE 1 15"	FOOT	64	64				
550A0050	STORM SEWERS, CLASS A, TYPE 1 12"	FOOT	55.8	55.8				
550A0120	STORM SEWERS, CLASS A, TYPE 1 24"	FOOT	6.0	6.0				
550A0340	STORM SEWERS, CLASS A, TYPE 2 12"	FOOT	58.4	58.4				
550A0360	STORM SEWERS, CLASS A, TYPE 2 15"	FOOT	366.1	366.1				
550A0380	STORM SEWERS, CLASS A, TYPE 2 18"	FOOT	488.5	488.5				
550A0410	STORM SEWERS, CLASS A, TYPE 2 24"	FOOT	74.6	74.6				
550A0710	STORM SEWERS, CLASS A, TYPE 3 24"	FOOT	76	76				
550A0470	STORM SEWERS CLASS A, TYPE 2 42"	FOOT	76.0	76.0				
55100500	STORM SEWER REMOVAL 12"	FOOT	564	564				
60100060	CONCRETE HEADWALLS FOR PIPE DRAINS	EACH	2	2				
60108100	PIPE UNDERDRAINS 4" (SPECIAL)	FOOT	60	60				

SUMMARY OF QUANTITIES			CONSTRUCTION TYPE CODE					
CODE NO	ITEM	UNIT	TOTAL QUANTITIES URBAN	80% FED 20% STATE ROADWAY 0004	80% FED 13.3% STATE 6.7% LAKE COUNTY T.S. SIG. 0021	100% ANTI OCH FIRE DEPT. EVP 0021	100% LAKE COUNTY T.S. SIG. 0021	80% FED 20% STATE RETAINING WALL 0044
60108204	PIPE UNDERDRAINS, TYPE 2, 4"	FOOT	1830	1830				
60200205	CATCH BASINS, TYPE A, 4'-DIAMETER, TYPE 1 FRAME, CLOSED LID	EACH	1	1				
60200805	CATCH BASINS, TYPE A, 4'-DIAMETER, TYPE 8 GRATE	EACH	3	3				
60206905	CATCH BASINS, TYPE C, TYPE 1 FRAME, OPEN LID	EACH	1	1				
60208240	CATCH BASINS, TYPE C, TYPE 24 FRAME AND GRATE	EACH	5	5				
60218400	MANHOLES, TYPE A, 4'-DIAMETER, TYPE 1 FRAME, CLOSED LID	EACH	9	9				
60223800	MANHOLES, TYPE A, 6'-DIAMETER, TYPE 1 FRAME, CLOSED LID	EACH	1	1				
60234200	INLETS, TYPE A, TYPE 1 FRAME, OPEN LID	EACH	1	1				
60236200	INLETS, TYPE A, TYPE 8 GRATE	EACH	1	1				
60237470	INLETS, TYPE A, TYPE 24 FRAME AND GRATE	EACH	3	3				
60300350	MANHOLE FRAMES TO BE ADJUSTED	EACH	1	1				
60406100	FRAMES AND LIDS, TYPE 1, CLOSED LID	EACH	1	1				

* SPECIALTY ITEMS

REVISED SHEET 4/13/2021 REV-SEP

FILE NAME =	USER NAME = katorim	DESIGNED -	REVISED -
pw:\planroom\dtd\11\mofsgov\PM\DOT\Documents\DOT	of\loc\Distric\N\Projects\P171909\CAD\Draw\Design\P171909-st	DRAWN -	REVISED -
	PLOT SCALE = 100.0000' / 1in	CHECKED -	REVISED -
	PLOT DATE = 1/28/2021	DATE -	REVISED -

STATE OF ILLINOIS
DEPARTMENT OF TRANSPORTATION

IL ROUTE 173 AT NORTH LAKE ST
SUMMARY OF QUANTITIES

SCALE: SHEET NO. OF SHEETS STA. TO STA.

F.A.P. RTE.	SECTION	COUNTY	TOTAL SHEETS	SHEET NO.
303	(134 & 134XIN)	LAKE	129	6
CONTRACT NO. 60V39				
FED. ROAD DIST. NO. 1 ILLINOIS FED. AID PROJECT				

1	EARTHWORK																	
	2		3		4		5		6		7		8		9		10	
	CUT EARTH EXCAVATION		UNSUITABLE MATERIAL		FILL EMBANKMENT		ADJUSTMENT FOR SHRINKAGE		EARTHWORK BALANCE		TOPSOIL EXCAVATION (EXISTING TOPSOIL) AVERAGE DEPTH = 10"		TOPSOIL PLACEMENT DEPTH = 6"		TOPSOIL PLACEMENT DEPTH = 18"		TOPSOIL BALANCE WASTE (+) OR SHORTAGE (-)	
	(CU YD)		(CU YD)		(CU YD)		(CU YD)		(CU YD)		(CU YD)		(CU YD)		(CU YD)		(CU YD)	
LEFT STAGE II	RIGHT STAGE I	LEFT STAGE II	RIGHT STAGE I	LEFT STAGE II	RIGHT STAGE I	LEFT STAGE II	RIGHT STAGE I	LEFT STAGE II	RIGHT STAGE I	LEFT STAGE II	RIGHT STAGE I	LEFT STAGE II	RIGHT STAGE I	LEFT STAGE II	RIGHT STAGE I	LEFT STAGE II	RIGHT STAGE I	
ILL 173 (STA. 105+00 TO STA. 105+07.7)	1	0	1	0	1	1	0.9	0.0	-0.2	-1.0	4	1	2	1	-	-	2	0
ILL 173 (STA. 105+07.7 TO STA. 105+50)	10	0	6	4	5	14	8.5	0.0	3.5	-14.0	24	15	13	7	-	-	11	8
ILL 173 (STA. 105+50 TO STA. 106+00)	21	0	4	4	3	16	17.9	0.0	14.9	-16.0	15	16	8	7	-	-	7	9
ILL 173 (STA. 106+00 TO STA. 106+42.01)	18	0	3	2	4	12	15.3	0.0	11.3	-12.0	13	6	6	3	-	-	7	3
ILL 173 (STA. 106+42.01 TO STA. 106+50)	5	0	1	0	2	2	4.3	0.0	2.3	-2.0	5	0	2	0	-	-	3	0
ILL 173 (STA. 106+50 TO STA. 107+00)	25	3	6	3	14	20	21.3	2.6	7.3	-17.5	33	18	14	9	-	-	19	9
ILL 173 (STA. 107+00 TO STA. 107+23.02)	11	1	1	3	4	12	9.4	0.9	5.4	-11.2	8	13	3	7	-	-	5	6
ILL 173 (STA. 107+23.02 TO STA. 107+37)	6	0	0	1	4	6	5.1	0.0	1.1	-6.0	4	3	0	1	-	-	4	2
ILL 173 (STA. 107+37 TO STA. 107+50)	4	0	0	0	9	4	3.4	0.0	-5.6	-4.0	8	2	1	1	-	-	7	1
ILL 173 (STA. 107+50 TO STA. 108+00)	13	13	0	4	42	9	11.1	11.1	-31.0	2.1	39	21	10	-	-	27	29	-6
ILL 173 (STA. 108+00 TO STA. 108+50)	13	31	0	7	41	7	11.1	26.4	-30.0	19.4	38	32	10	-	-	53	28	-21
ILL 173 (STA. 108+50 TO STA. 109+00)	7	37	44	7	28	8	6.0	31.5	-22.1	23.5	35	36	9	-	-	60	26	-24
ILL 173 (STA. 109+00 TO STA. 109+50)	0	35	94	7	13	8	0.0	29.8	-13.0	21.8	29	36	8	-	-	59	21	-23
ILL 173 (STA. 109+50 TO STA. 109+76.32)	0	17	52	4	6	4	0.0	14.5	-6.0	10.5	7	19	2	-	-	30	5	-11
ILL 173 (STA. 109+76.32 TO STA. 110+00)	0	13	45	3	8	4	0.0	11.1	-8.0	7.1	6	16	2	18	-	-	4	-2
ILL 173 (STA. 110+00 TO STA. 110+25)	0	8	46	4	10	7	0.0	6.8	-10.0	-0.2	14	16	5	9	-	-	9	7
ILL 173 (STA. 110+25 TO STA. 110+50)	0	1	45	2	10	9	0.0	0.9	-10.0	-8.2	14	7	5	4	-	-	9	3
ILL 173 (STA. 110+50 TO STA. 111+00)	0	0	87	4	21	19	0.0	0.0	-21.0	-19.0	28	16	9	9	-	-	19	7
ILL 173 (STA. 111+00 TO STA. 111+50)	0	1	44	8	0	19	0.0	0.9	0.0	-18.2	14	33	5	19	-	-	9	14
ILL 173 (STA. 111+50 TO STA. 112+00)	0	1	0	6	0	21	0.0	0.9	0.0	-20.2	0	24	0	14	-	-	0	10
ILL 173 (STA. 112+00 TO STA. 112+50)	0	0	44	3	0	23	0.0	0.0	0.0	-23.0	0	12	5	7	-	-	-5	5
ILL 173 (STA. 112+50 TO STA. 113+00)	0	0	98	0	25	23	0.0	0.0	-25.0	-23.0	15	13	11	-	-	10	4	3
ILL 173 (STA. 113+00 TO STA. 113+08.7)	1	5	9	0	5	5	0.9	4.3	-4.2	-0.8	5	3	2	-	-	3	3	0
ILL 173 (STA. 113+08.7 TO STA. 113+36.64)	2	17	0	0	27	12	1.7	14.5	-25.3	2.5	8	7	3	-	-	9	5	-2
ILL 173 (STA. 113+36.64 TO STA. 113+50)	0	0	0	0	20	4	0.0	0.0	-20.0	-4.0	0	3	0	-	-	4	0	-1
ILL 173 (STA. 113+50 TO STA. 114+00)	3	0	0	0	221	12	2.6	0.0	-218.5	-12.0	38	9	10	-	-	15	28	-6
ILL 173 (STA. 114+00 TO STA. 114+50)	6	0	0	0	334	9	5.1	0.0	-328.9	-9.0	73	8	-	-	44	15	29	-7
ILL 173 (STA. 114+50 TO STA. 115+00)	9	0	0	0	231	10	7.7	0.0	-223.4	-10.0	63	9	-	-	70	15	-7	-6
ILL 173 (STA. 115+00 TO STA. 115+50)	10	0	0	0	105	16	8.5	0.0	-96.5	-16.0	39	12	-	-	39	15	0	-3
ILL 173 (STA. 115+50 TO STA. 116+00)	8	0	0	0	53	18	6.8	0.0	-46.2	-18.0	21	15	-	-	6	15	15	0
ILL 173 (STA. 116+00 TO STA. 116+50)	8	0	0	0	52	16	6.8	0.0	-45.2	-16.0	20	16	-	-	13	15	7	1
ILL 173 (STA. 116+50 TO STA. 117+00)	7	0	0	0	53	19	6.0	0.0	-47.1	-19.0	21	17	-	-	17	15	4	2
ILL 173 (STA. 117+00 TO STA. 117+50)	4	0	0	0	51	16	3.4	0.0	-47.6	-16.0	19	16	-	-	17	18	2	-2
ILL 173 (STA. 117+50 TO STA. 118+00)	2	1	0	0	40	12	1.7	0.9	-38.3	-11.2	18	15	-	-	17	21	1	-6
ILL 173 (STA. 118+00 TO STA. 118+50)	0	1	0	0	28	16	0.0	0.9	-28.0	-15.2	16	13	-	13	19	-	-3	0
ILL 173 (STA. 118+50 TO STA. 119+00)	0	0	0	0	25	20	0.0	0.0	-25.0	-20.0	16	13	-	5	20	-	-4	8
ILL 173 (STA. 119+00 TO STA. 119+50)	1	0	0	0	38	22	0.9	0.0	-37.2	-22.0	28	13	-	5	42	-	-14	8
ILL 173 (STA. 119+50 TO STA. 119+70)	1	0	0	0	12	10	0.9	0.0	-11.2	-10.0	14	6	-	2	24	-	-10	4
SUB-TOTAL	196	185	630	76	1545	465	166.6	157.3	-1378.4	-1686.2	752	530	145	141	328	399	279	-10
		381		706							1282		286		727		269	

COLUMN 1: LOCATION FROM PLANS
 COLUMN 2: CUT QUANTITIES FROM CROSS SECTIONS, WHICH DOES NOT INCLUDE UNSUITABLE MATERIAL
 COLUMN 3: CUT MATERIAL THAT IS DETERMINED TO BE EITHER UNSTABLE OR UNSUITABLE FOR USE IN EMBANKMENT, ASSUME 12" OF UNSUITABLE MATERIAL
 COLUMN 4: QUANTITIES FROM CROSS SECTIONS (FILL)
 COLUMN 5: EARTH EXCAVATION THAT IS TO BE USED AS FILL MATERIAL IN THE EMBANKMENT, SHRINKAGE FACTOR WAS DETERMINED TO BE 15%
 COLUMN 6: COLUMN 5 - COLUMN 4, POSITIVE QUANTITY= EXTRA EXCAVATION, NEGATIVE QUANTITY= FURNISHED EXCAVATION NEEDED

COLUMN 7: QUANTITIES OF EXISTING TOPSOIL, TO BE PAID FOR AS "TOPSOIL EXCAVATION AND PLACEMENT"
 COLUMN 8 - COLUMN 9: QUANTITIES OF TOPSOIL NEEDED FOR LANDSCAPING = AREA OF SEEDING
 COLUMN 10: TOPSOIL REQUIRED (COLUMN 7 - COLUMN 8 OR 9)
 (+) = QUANTITIES OF TOPSOIL TO BE WASTED
 (-) = QUANTITIES OF FURNISHED TOPSOIL NEEDED

NOTE: REFER TO LANDSCAPING PLAN FOR TOPSOIL PLACEMENT AND THICKNESSES.

REVISION SYMBOL: REVISED SHEET 4/13/2021

MODEL: Default
 FILE: \\s:\b\p\pub\baronm.d\at\illndk\gov\p\illndk\p\p\DOT\Documents\DOT_Offices\Illndk\171909\at\schedule.dgn

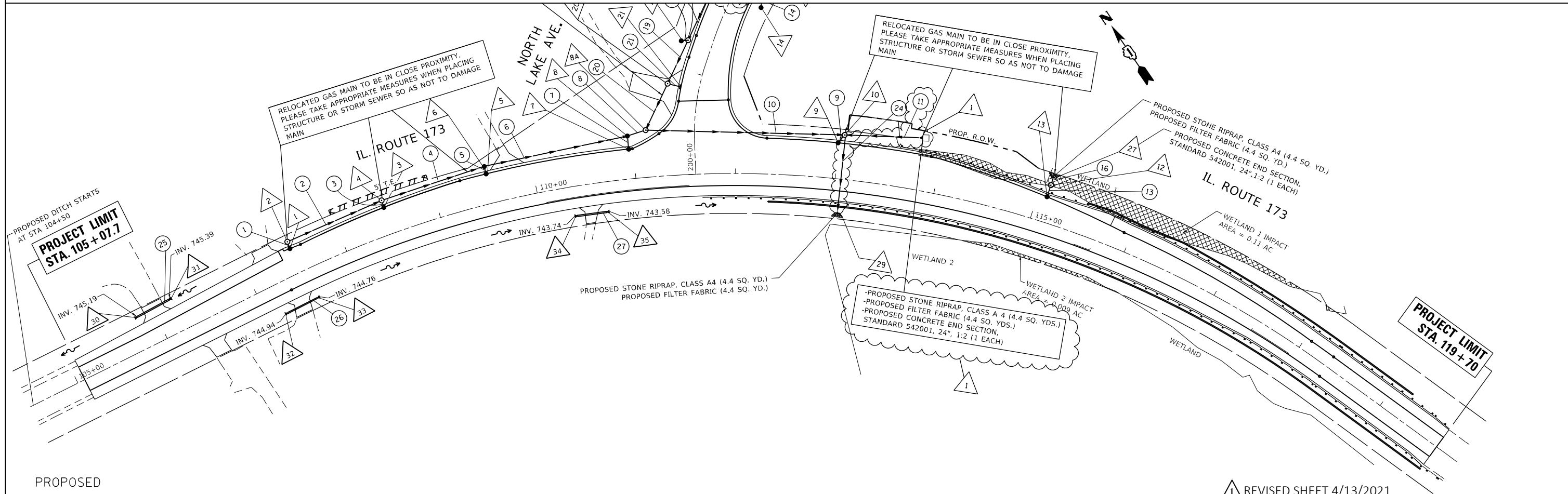
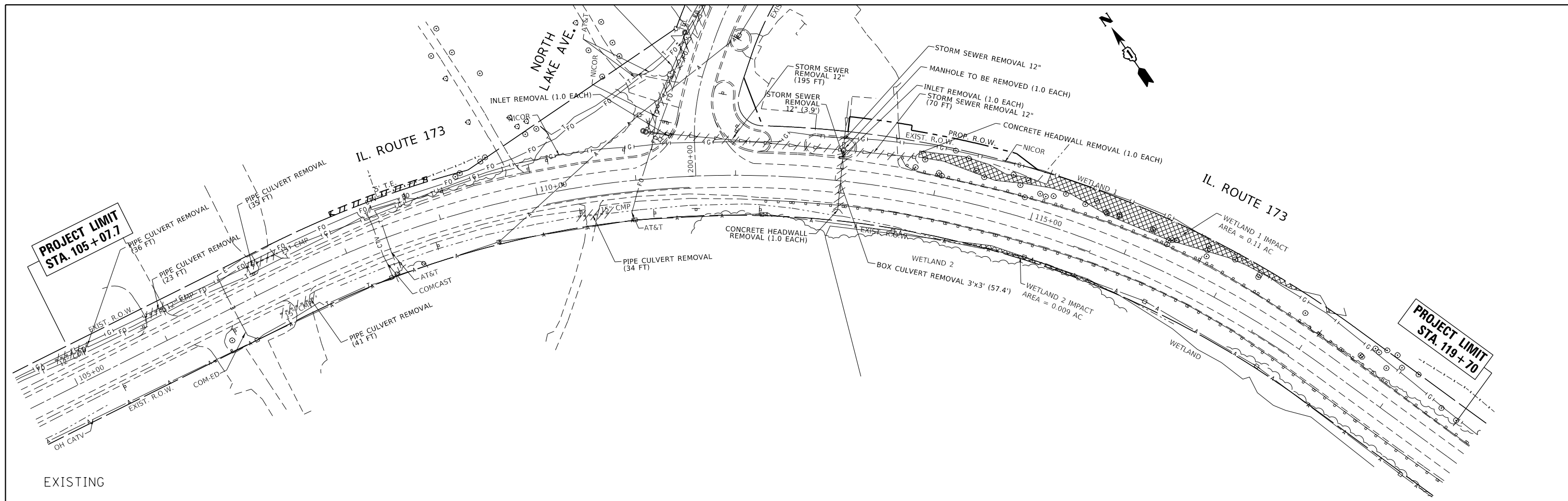
USER NAME = kalorm	DESIGNED -	REVISED - RK-04/12/2021
	DRAWN -	REVISED -
PLOT SCALE = 100,0000' / in.	CHECKED -	REVISED -
PLOT DATE = 4/12/2021	DATE -	REVISED -

STATE OF ILLINOIS
 DEPARTMENT OF TRANSPORTATION

IL 173 AT NORTH LAKE AVE.
 SCHEDULE OF QUANTITIES (EARTHWORK)

SCALE: SHEET 1 OF 2 SHEETS STA. TO STA.

F.A.P. RTE.	SECTION	COUNTY	TOTAL SHEETS	SHEET NO.
303	(134&134X)N	LAKE	129	22
CONTRACT NO. 60V39				
ILLINOIS FED. AID PROJECT				



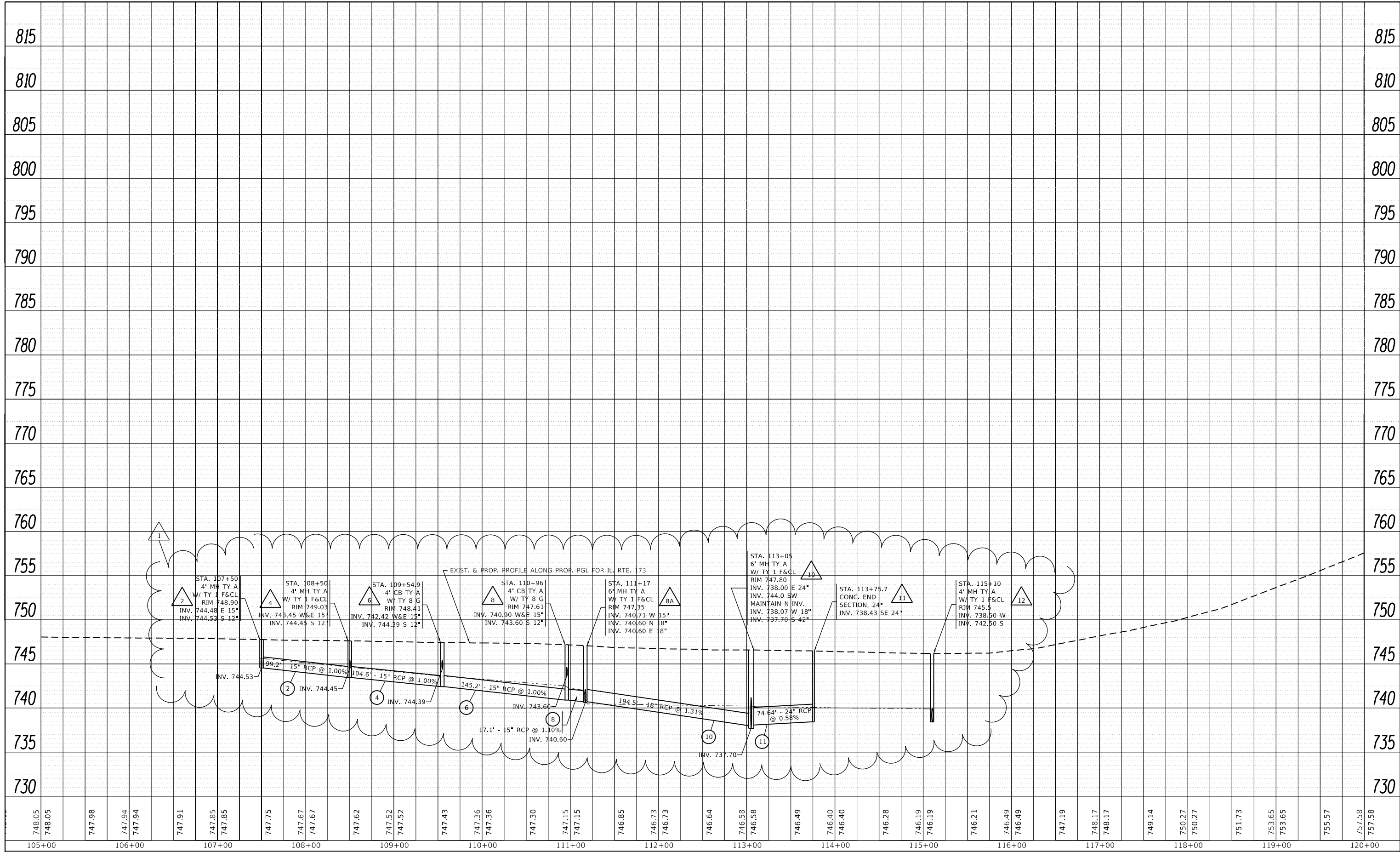
REVISOR SHEET 4/13/2021

FILE NAME =	USER NAME = kalorm	DESIGNED -	REVISED - ARK - 04/12/2021	STATE OF ILLINOIS DEPARTMENT OF TRANSPORTATION	DRAINAGE PLAN IL. ROUTE 173 AT NORTH LAKE AVE.	F.A.P. RTE.	SECTION	COUNTY	TOTAL SHEETS	SHEET NO.	
pw:\planroom.dot.illinois.gov\PIWIDOT\Documents\IDOT Offices\District 1\Projects\P171909\Drawings\CADsheets\P171909-sht-drain.dgn	PLOT SCALE = 100.0000' / in.	CHECKED -	REVISED -			303	(134&134)XN	LAKE	129	53	
Default	PLOT DATE = 4/12/2021	DATE -	REVISED -			CONTRACT NO. 60V39					
						ILLINOIS FED. AID PROJECT					

SCALE: 1"=50' SHEET OF SHEETS STA. TO STA.

PLAN	SURVEYED	DATE
NOTE BOOK	PLOTTED	BY
NO.	ALIGNMENT	
	CHECKED	
	CADD FILE NAME	

PROFILE	SURVEYED	DATE
NOTE BOOK	PLOTTED	BY
NO.	GRADES CHECKED	
	STRUCTURE	
	NOT AT THIS OFFICE	



1 REVISED SHEET 4/13/2021

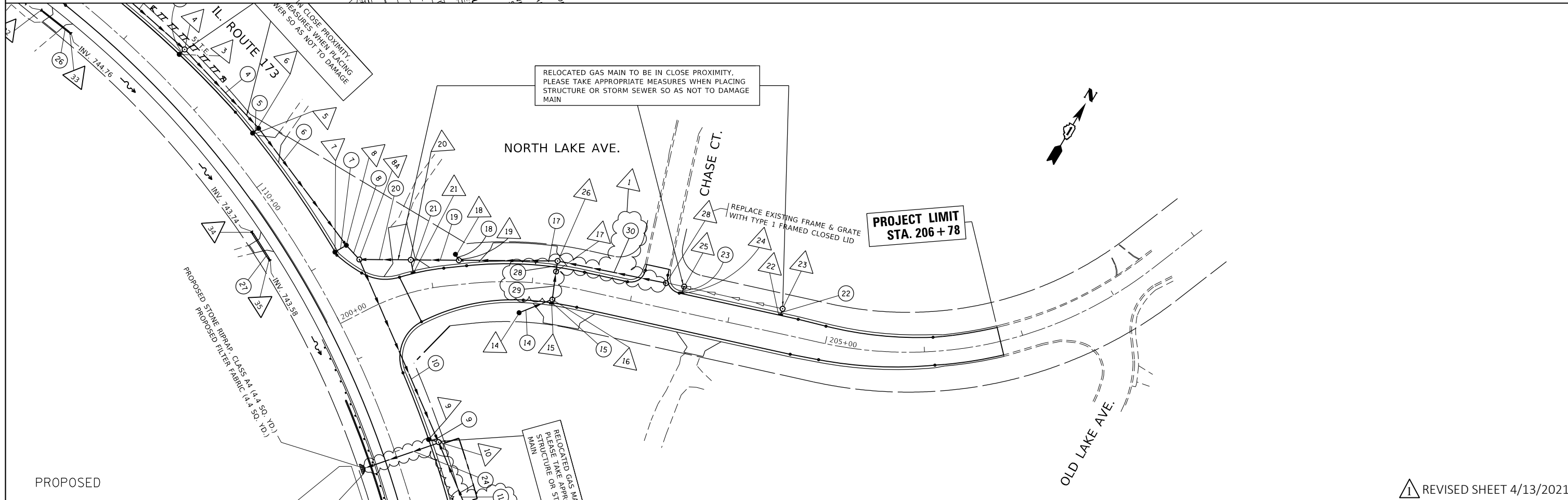
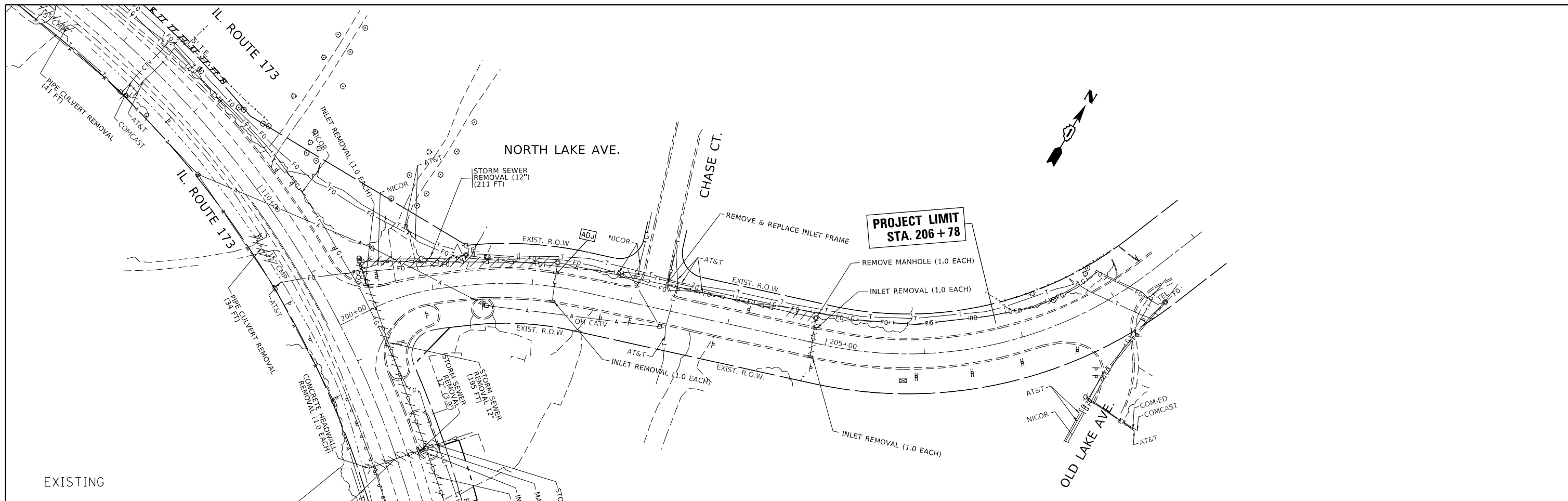
FILE NAME =	USER NAME = kalorm	DESIGNED -	REVISED - Δ RK - 04/12/2021
p:\p\planroom.dot\illinois.gov\PI\DOT\Documents\DOT Offices\District 1\Projects\171909\DRAWN\CAD\Sheets\171909-shd-drain.dgn		CHECKED -	REVISED -
Default	PLOT DATE = 4/12/2021	DATE -	REVISED -

**STATE OF ILLINOIS
DEPARTMENT OF TRANSPORTATION**

**DRAINAGE PROFILE
IL. ROUTE 173 AT NORTH LAKE AVE.**

SCALE: 1"=50' SHEET OF SHEETS STA. TO STA.

F.A.P. RTE.	SECTION	COUNTY	TOTAL SHEETS	SHEET NO.
303	(1348.134)XIN	LAKE	129	54
CONTRACT NO. 60V39				
ILLINOIS FED. AID PROJECT				



FILE NAME =	USER NAME = kalorm	DESIGNED -	REVISIONS -	STATE OF ILLINOIS DEPARTMENT OF TRANSPORTATION	DRAINAGE PLAN IL. ROUTE 173 AT NORTH LAKE AVE.	F.A.P. RTE.	SECTION	COUNTY	TOTAL SHEETS	SHEET NO.	
pw:\planroom.dot.illinois.gov\PIWIDOT\Documents\IDOT Offices\District 1\Projects\P171909\CAD\Drawings\P171909-sht-drain.dgn	PLOT SCALE = 100.0000' / in.	CHECKED -	REVISIONS -			303	(1348&134XIN	LAKE	129	55	
Default	PLOT DATE = 4/12/2021	DATE -	REVISIONS -			CONTRACT NO. 60V39					
						ILLINOIS FED. AID PROJECT					

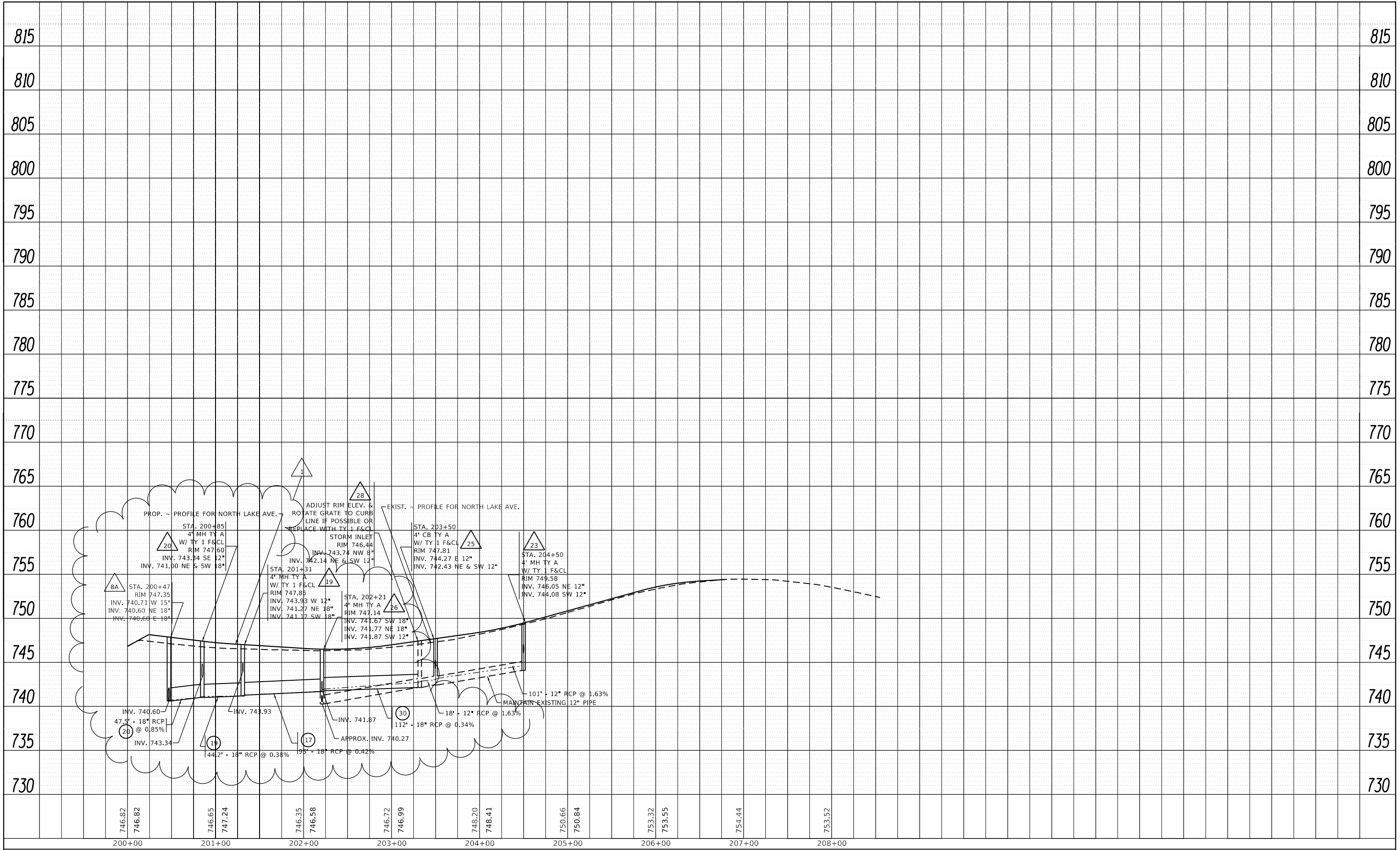
REVISIONS - **1** RK - 04/12/2021

REVISED SHEET 4/13/2021

SCALE: 1"=50' SHEET OF SHEETS STA. TO STA.

PLAN	SURVEYED	DATE
NOTE BOOK	PLOTTED	BY
NO.	ALIGNED	
	CHECKED	
	CADD FILE NAME	

PROFILE	SURVEYED	DATE
NOTE BOOK	PLOTTED	BY
NO.	GRADES CHECKED	
	STRUCTURE NOTATIONS CHECKED	



FILE NAME =	USER NAME = kalorm	DESIGNED -	REVISED -	STATE OF ILLINOIS DEPARTMENT OF TRANSPORTATION		DRAINAGE PROFILE IL. ROUTE 173 AT NORTH LAKE AVE.		F.A.P. RTE.	SECTION	COUNTY	TOTAL SHEETS	SHEET NO.
Default		DATE = 4/12/2021	REVISED -					303	(134&134XIN	LAKE	129	56
			REVISED -					CONTRACT NO. 60V39				
			REVISED -					ILLINOIS FED. AID PROJECT				

REVISED SHEET 4/13/2021

SCALE: 1"=50' SHEET OF SHEETS STA. TO STA.

STORM SEWER TABLE							
NO.	STATION - STATION	CLASS	TYPE	DIAMETER (IN)	LENGTH (FT)	SLOPE (%)	TBF (CU.YD.)
1	107+50	A	2	12	3.1	1.6	0.72
2	107+50 - 108+50	A	2	15	99.2	1.0	43.37
3	108+50	A	2	12	2.9	4.8	0.74
4	108+50 - 109+54.9	A	2	15	104.6	1.0	73.60
5	109+54.9	A	2	12	3.8	4.7	0.69
6	109+50 - 110+96	A	2	15	145.2	1.0	26.83
7	110+96	A	2	12	8.9	5.8	0.70
8	110+96 - 111+14	A	2	15	17.1	1.1	
9	113+00	A	1	12	4.5	4.0	0.5
10	111+17 - 113+05	A	2	18	194.5	1.3	214.37
11	113+05 - 113+93	A	2	24	74.6	0.6	82.72
12	NOT USED						
13	115+10	A	2	12	8.1	5.9	0.4
14	201+89 - 202+22	A	1	12	31.9	0.7	4.23
15	202+22	A	1	12	1.5	0.7	N/A
16	115+10	A	1	24	6.0	0.2	
17	201+31 - 202+21	A	2	18	95	0.4	85.09
18	201+31	A	1	12	3.3	2.1	N/A
19	200+83 - 201+31	A	2	18	44.2	0.4	11.25
20	200+42 - 200+80	A	2	18	47.5	0.8	18.17
21	200+85	A	1	12	9.3	1.4	0.2
22	204+50	A	1	12	2.4	2.5	0.14
23	203+50	A	1	12	2.9	2.0	0.3
24	113+05	A	2	42	76.0	0.4	126.34
28	202+21	A	2	12	6.9	0.7	3.85
29	202+21	A	2	12	24.7	0.7	8.82
30	202+21 - 203+32	A	2	18	107.3	0.3	72.91

PIPE CULVERT TABLE							
NO.	STATION - STATION	CLASS	TYPE	DIAMETER (IN)	LENGTH (FT)	SLOPE (%)	TBF (CU.YD.)
25	105+82 - 106+22	A	1	12	40.0	0.5	0.6
26	107+20 - 107+52	A	1	15	32.0	0.6	0.4
27	110+35 - 110+67	A	1	15	32.0	0.5	0.3

DRAINAGE NOTES:

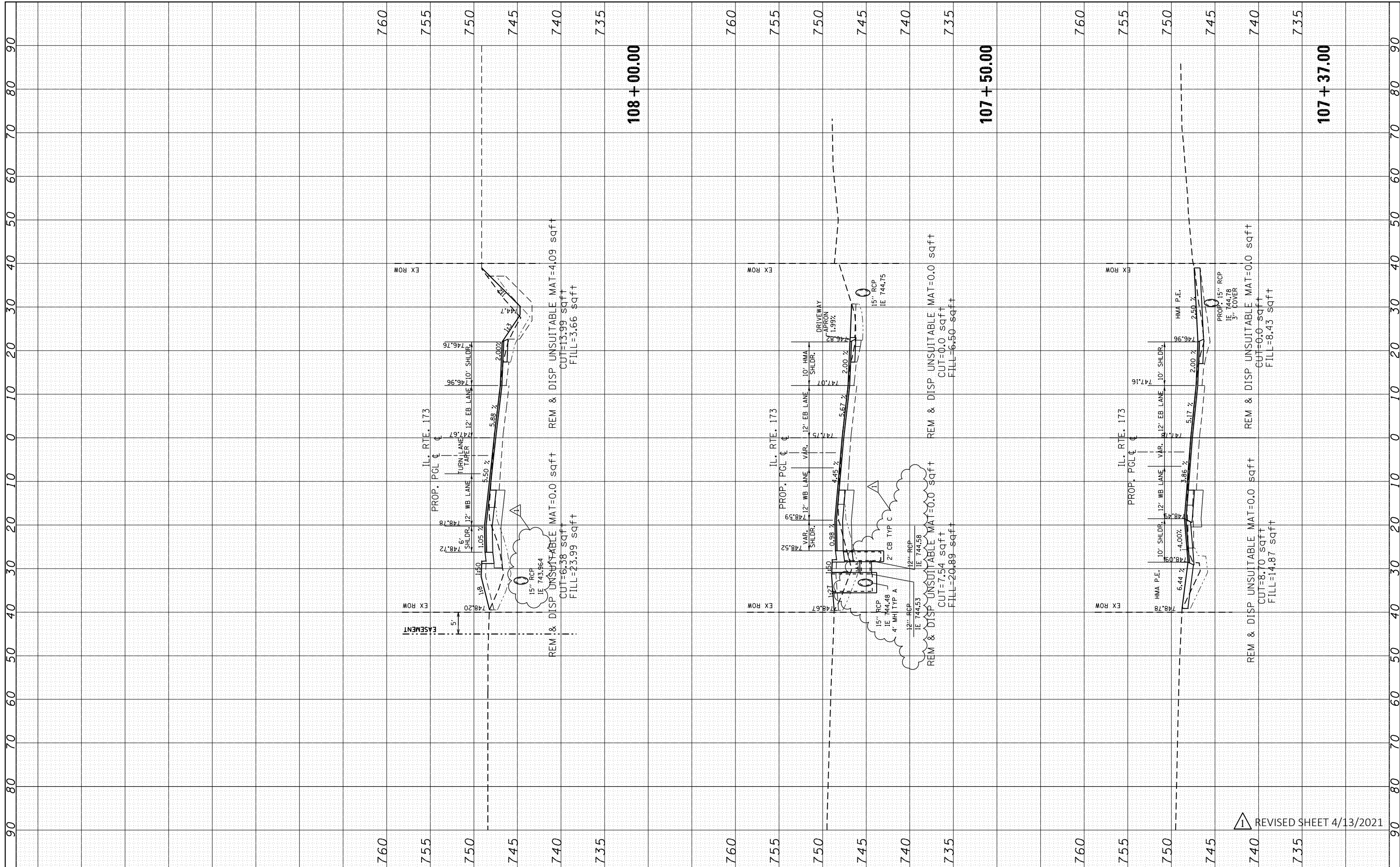
- THIS INSTALLATION AND CONNECTION OF A PROPOSED STRUCTURE (CATCH BASING/MANHOLE/INLET) OVER AN EXISTING STORM SEWER AND/OR A PROPOSED STORM SEWER CONNECTION TO AN EXISTING STRUCTURE, AND THE REMOVAL WORK REQUIRED TO MAKE THE CONNECTION WILL NOT BE PAID FOR SEPARATELY, BUT SHALL BE INCLUDED IN THE CONTRACT UNIT PRICE FOR THE ITEM BEING INSTALLED.
- THE INSTALLATION AND CONNECTION OF A PROPOSED STORM SEWER TO AN EXISTING STORM SEWER, AND THE REMOVAL WORK REQUIRED TO MAKE THE CONNECTION WILL NOT BE PAID FOR SEPARATELY, BUT SHALL BE INCLUDED IN THE CONTRACT UNIT PRICE FOR THE ITEM BEING INSTALLED.



REVISED SHEET 4/13/2021

FINIAL SURVEY	SURVEYED	BY	DATE
NOTE BOOK	PLOTTED		
AREAS CHECKED	TEMPLATE		
	AREAS CHECKED		

ORIGINAL SURVEY	SURVEYED	BY	DATE
NOTE BOOK	PLOTTED		
AREAS CHECKED	TEMPLATE		
	AREAS CHECKED		



FILE NAME =	USER NAME = kalorm	DESIGNED -	REVISED -
p:\planroom\dotillinois.gov\PI\DOT\Documents\DOT Offices\District 1\Projects\PI171909\CADD\Drawn\PI171909-sh-t-xssht-IL173.dgn		DR - 04/12/2021	AK - 04/12/2021
PLOT SCALE = 20.0000' / in.	CHECKED -	REVISOR -	REVISOR -
PLOT DATE = 4/12/2021	DATE -	REVISOR -	REVISOR -

**STATE OF ILLINOIS
DEPARTMENT OF TRANSPORTATION**

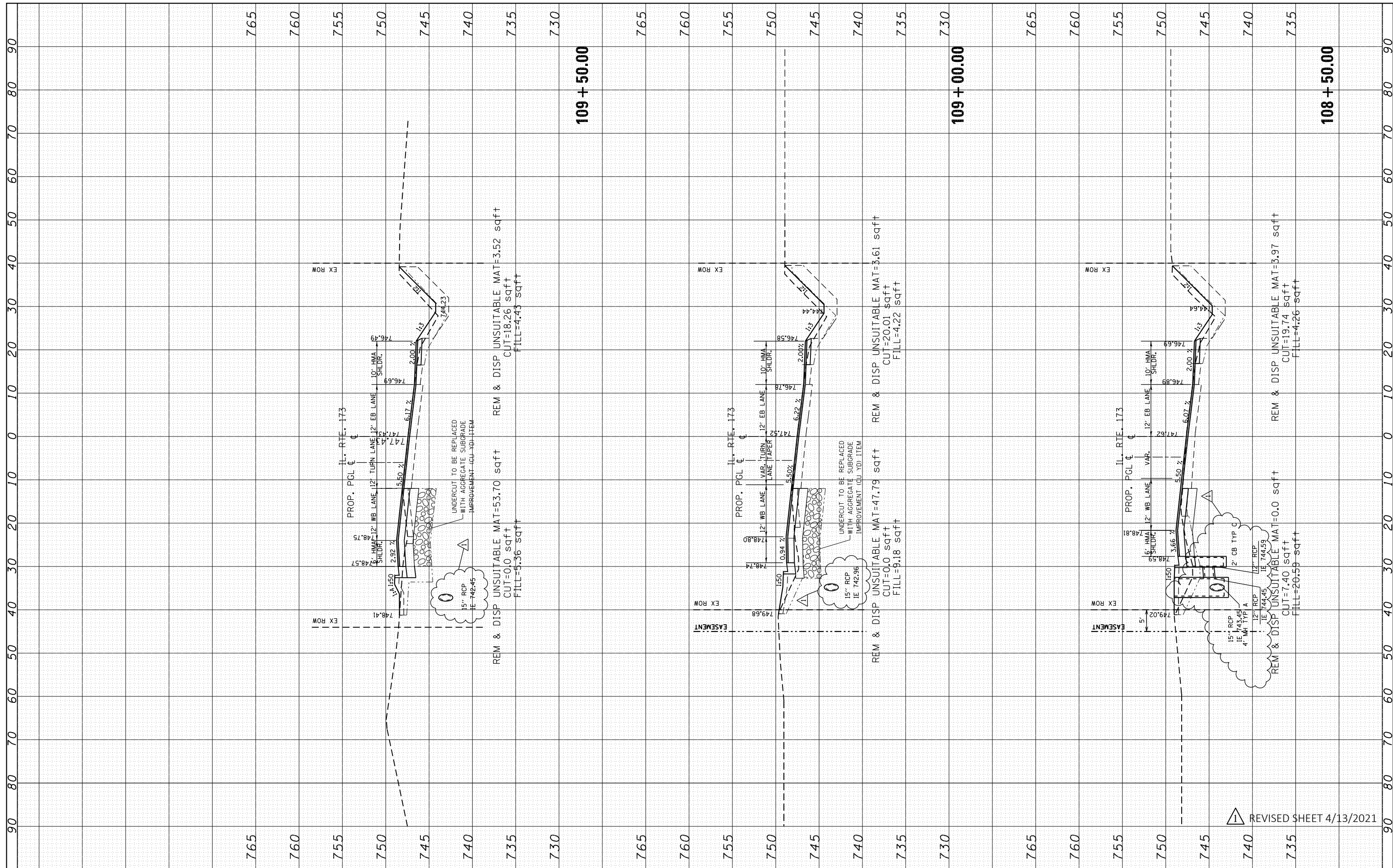
CROSS SECTIONS			
IL. ROUTE 173 AT NORTH LAKE ST.			
SCALE:	SHEET	OF	SHEETS
			STA. 107+37.00 TO STA. 108+00.00

F.A.P. RTE.	SECTION	COUNTY	TOTAL SHEETS	SHEET NO.
303	(134&134XIN)	LAKE	129	113
			CONTRACT NO. 60V39	
ILLINOIS FED. AID PROJECT				

REVISOR 1 REVISOR 2 REVISOR 3 REVISOR 4 REVISOR 5 REVISOR 6 REVISOR 7 REVISOR 8 REVISOR 9 REVISOR 10 REVISOR 11 REVISOR 12 REVISOR 13 REVISOR 14 REVISOR 15 REVISOR 16 REVISOR 17 REVISOR 18 REVISOR 19 REVISOR 20 REVISOR 21 REVISOR 22 REVISOR 23 REVISOR 24 REVISOR 25 REVISOR 26 REVISOR 27 REVISOR 28 REVISOR 29 REVISOR 30 REVISOR 31 REVISOR 32 REVISOR 33 REVISOR 34 REVISOR 35 REVISOR 36 REVISOR 37 REVISOR 38 REVISOR 39 REVISOR 40 REVISOR 41 REVISOR 42 REVISOR 43 REVISOR 44 REVISOR 45 REVISOR 46 REVISOR 47 REVISOR 48 REVISOR 49 REVISOR 50 REVISOR 51 REVISOR 52 REVISOR 53 REVISOR 54 REVISOR 55 REVISOR 56 REVISOR 57 REVISOR 58 REVISOR 59 REVISOR 60 REVISOR 61 REVISOR 62 REVISOR 63 REVISOR 64 REVISOR 65 REVISOR 66 REVISOR 67 REVISOR 68 REVISOR 69 REVISOR 70 REVISOR 71 REVISOR 72 REVISOR 73 REVISOR 74 REVISOR 75 REVISOR 76 REVISOR 77 REVISOR 78 REVISOR 79 REVISOR 80 REVISOR 81 REVISOR 82 REVISOR 83 REVISOR 84 REVISOR 85 REVISOR 86 REVISOR 87 REVISOR 88 REVISOR 89 REVISOR 90 REVISOR 91 REVISOR 92 REVISOR 93 REVISOR 94 REVISOR 95 REVISOR 96 REVISOR 97 REVISOR 98 REVISOR 99 REVISOR 100

FINAL SURVEY	BY	DATE
SURVEYED		
PLOTTED		
TEMPLATE		
NOTE BOOK		
AREAS CHECKED		
NO.		

ORIGINAL SURVEY	BY	DATE
SURVEYED		
PLOTTED		
TEMPLATE		
NOTE BOOK		
AREAS CHECKED		
NO.		



FILE NAME =	USER NAME = kalm	DESIGNED -	REVISED - ARK - 04/12/2021
p:\planroom\dotillinois.gov\PI\DOT\Documents\DOT Offices\District 1\Projects\PI71909\CADD\DRAWN\PI71909-sh-xssh-IL173.dgn		DRAWN -	REVISED -
PLOT SCALE = 20.0000' / in.		CHECKED -	REVISED -
PLOT DATE = 4/12/2021		DATE -	REVISED -

**STATE OF ILLINOIS
DEPARTMENT OF TRANSPORTATION**

**CROSS SECTIONS
IL. ROUTE 173 AT NORTH LAKE ST.**

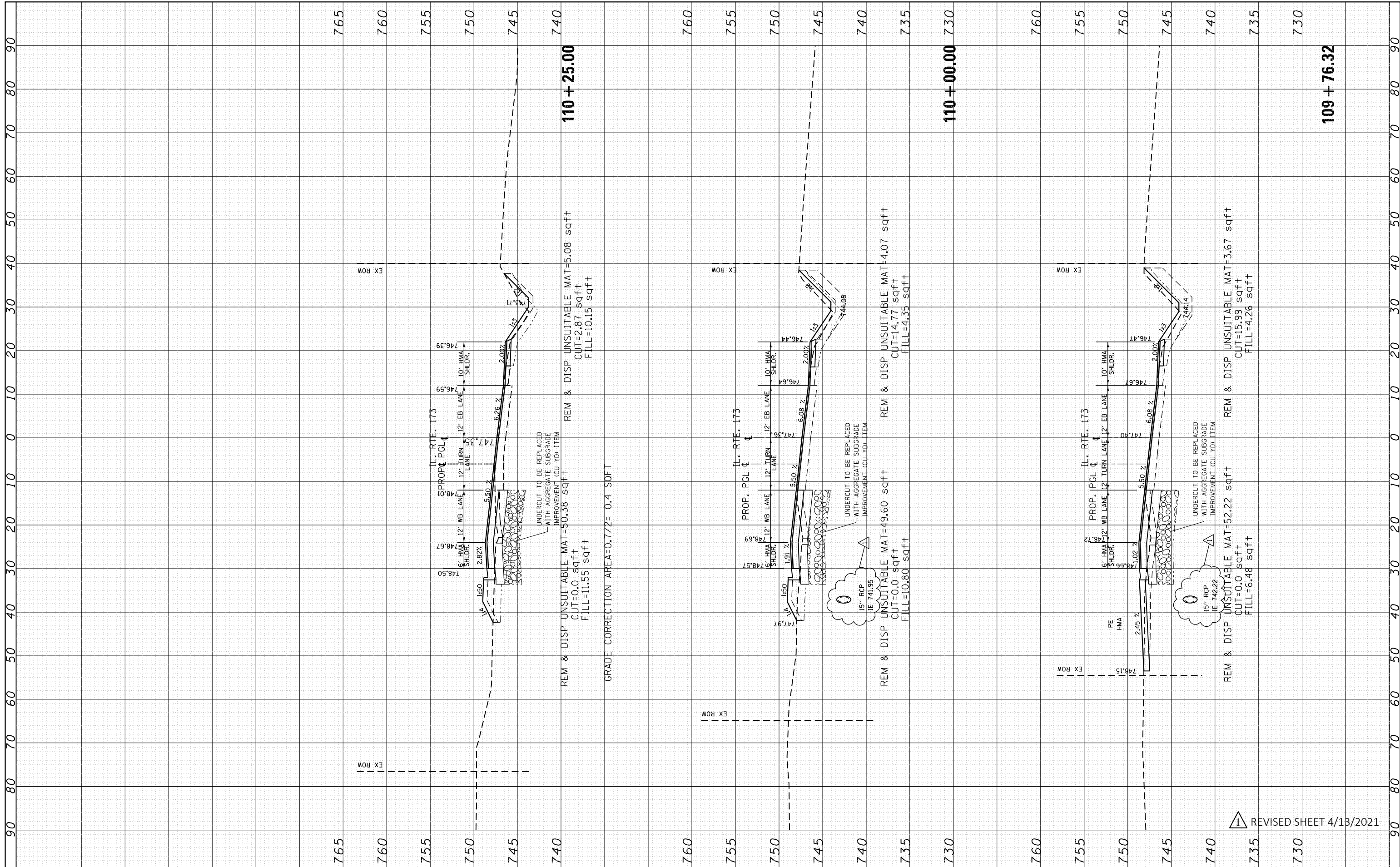
SCALE: SHEET OF SHEETS STA. 108+50.00 TO STA. 109+50.00

F.A.P. RTE.	SECTION	COUNTY	TOTAL SHEETS	SHEET NO.
303	(134&134)IN	LAKE	129	114
CONTRACT NO. 60V39			ILLINOIS FED. AID PROJECT	

REVISI I REVISI I REVISI I
REVISED SHEET 4/13/2021

FINAL SURVEY NO.	SURVEYED PLOTTED TEMPLATE AREAS CHECKED	BY	DATE

ORIGINAL SURVEY NO.	SURVEYED PLOTTED TEMPLATE AREAS CHECKED	BY	DATE



FILE NAME =	USER NAME = kalorm	DESIGNED -	REVISED -
p:\planroom\dotillinois.gov\PI\DOT\Documents\DOT Offices\District 1\Projects\PI171909\CADD\DRAWN\PI171909-sh-xssht-IL173.dgn			ARK - 04/12/2021
		CHECKED -	REVISED -
		DATE -	REVISED -

**STATE OF ILLINOIS
DEPARTMENT OF TRANSPORTATION**

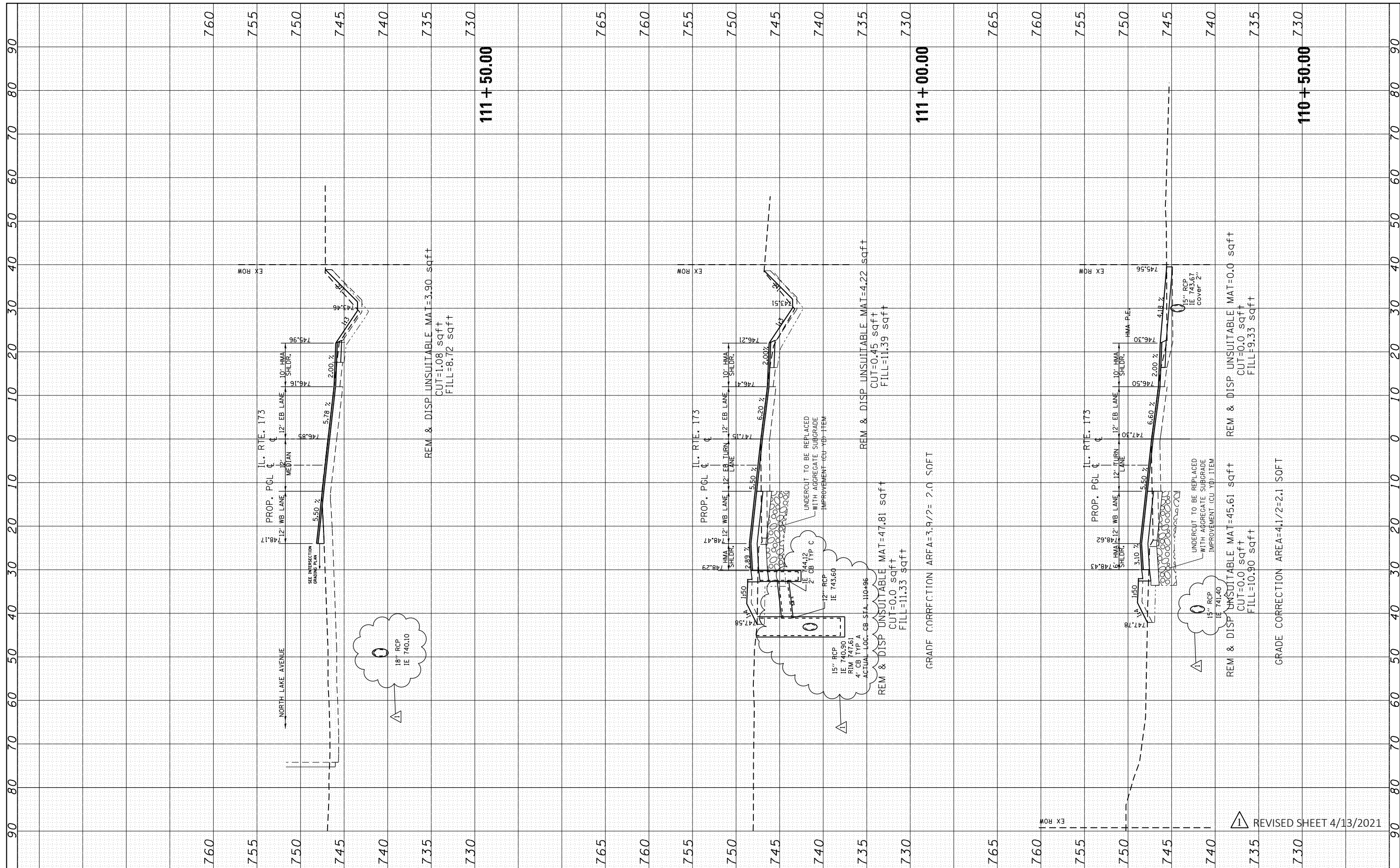
CROSS SECTIONS			
IL. ROUTE 173 AT NORTH LAKE ST.			
SCALE:	SHEET	OF	SHEETS
			STA. 109+76.32 TO STA. 110+25.00

F.A.P. RTE.	SECTION	COUNTY	TOTAL SHEETS	SHEET NO.
303	(134&134XIN	LAKE	129	115
CONTRACT NO. 60V39				
ILLINOIS FED. AID PROJECT				

REVISOR'S MARK: **△** REVISED SHEET 4/13/2021

FINIAL SURVEY	SURVEYED	BY	DATE
NOTE BOOK	PLOTTED		
AREAS CHECKED	TEMPLATE		
	AREAS CHECKED		

ORIGINAL SURVEY	SURVEYED	BY	DATE
NOTE BOOK	PLOTTED		
AREAS CHECKED	TEMPLATE		
	AREAS CHECKED		



FILE NAME = p:\planroom\dotillinois.gov\PI171909\CADD\Drawn\PI171909-shsht-1173.dgn
 USER NAME = kalorm
 DESIGNED -
 CHECKED -
 DATE -

REVISIONS:
 1. RK - 04/12/2021
 2. RK - 04/12/2021
 3. RK - 04/12/2021
 4. RK - 04/12/2021

STATE OF ILLINOIS
DEPARTMENT OF TRANSPORTATION

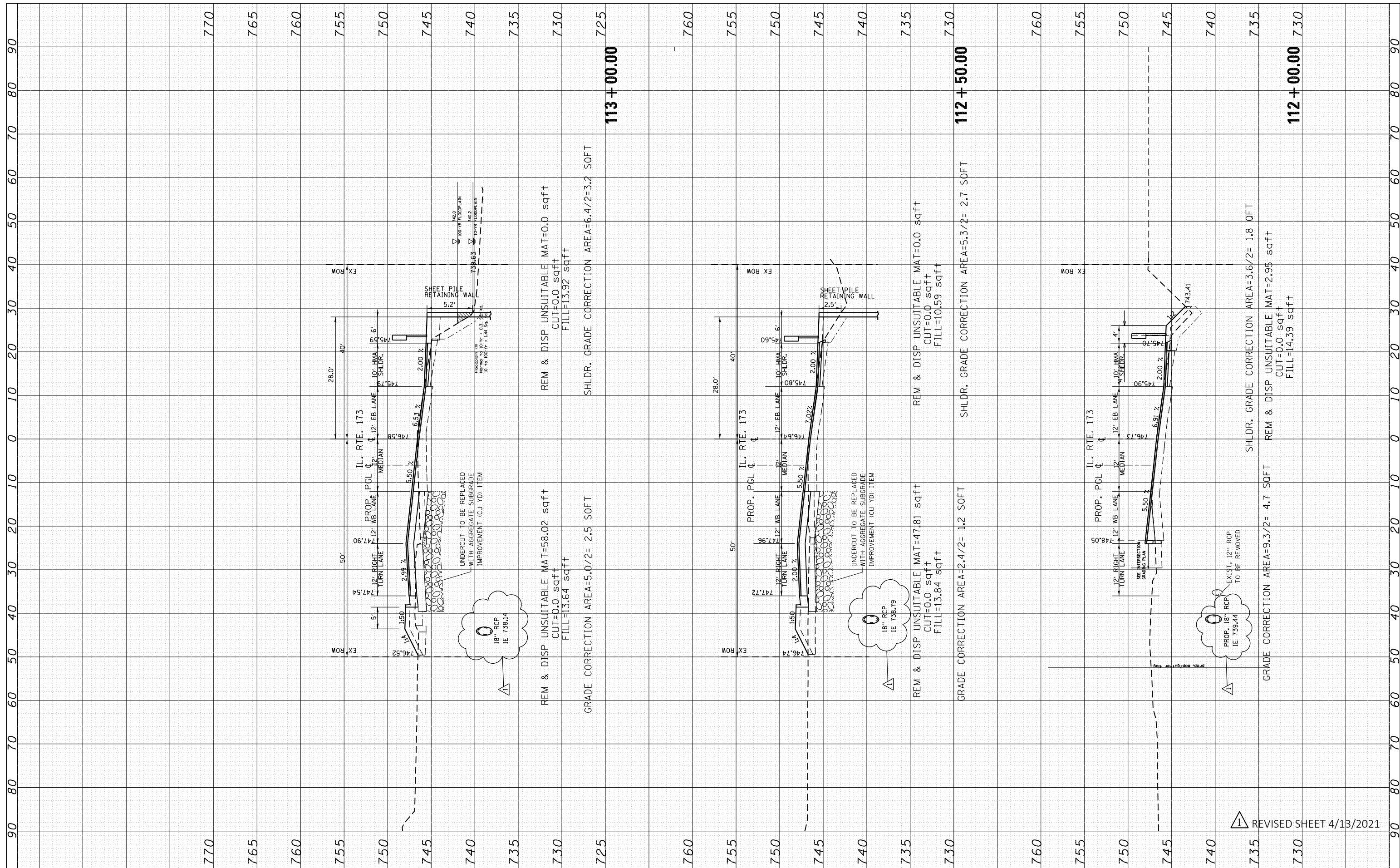
CROSS SECTIONS
IL. ROUTE 173 AT NORTH LAKE ST.
 SCALE: SHEET OF SHEETS STA. 110+50.00 TO STA. 111+50.00

F.A.P. RTE.	SECTION	COUNTY	TOTAL SHEETS	SHEET NO.
303	(134&134XIN	LAKE	129	116
				CONTRACT NO. 60V39
ILLINOIS FED. AID PROJECT				

REVISOR'S MARK: REVISED SHEET 4/13/2021

FINIAL SURVEY	SURVEYED	BY	DATE
NOTE BOOK	PLOTTED		
AREAS CHECKED	TEMPLATE		
	AREAS CHECKED		

ORIGINAL SURVEY	SURVEYED	BY	DATE
NOTE BOOK	PLOTTED		
AREAS CHECKED	TEMPLATE		
	AREAS CHECKED		

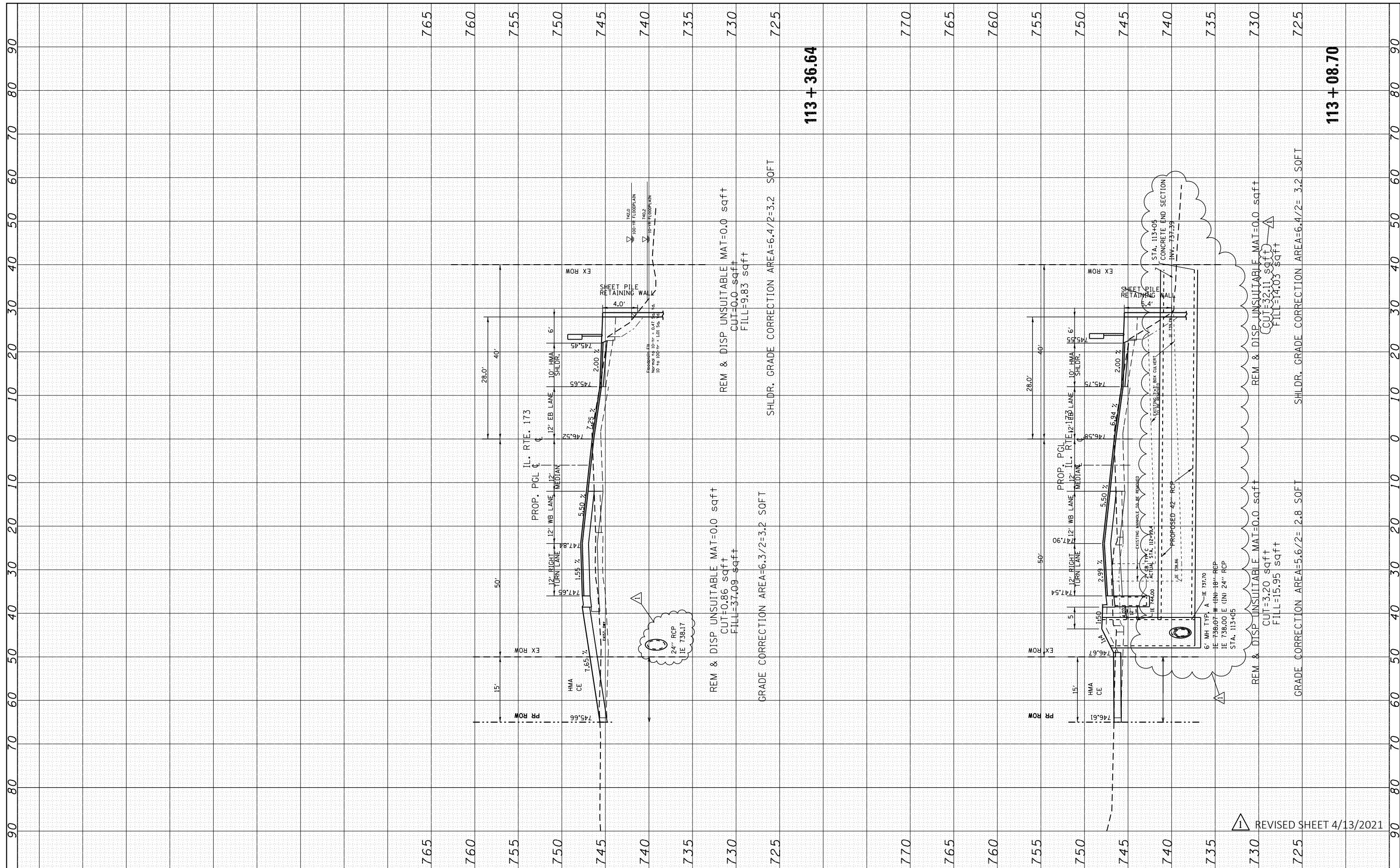


FILE NAME =	USER NAME = kalorm	DESIGNED -	REVISED -	STATE OF ILLINOIS DEPARTMENT OF TRANSPORTATION	CROSS SECTIONS IL. ROUTE 173 AT NORTH LAKE ST.	F.A.P. RTE.	SECTION	COUNTY	TOTAL SHEETS	SHEET NO.	
Default		DATE	REVISED -			303	(134&134)IN	LAKE	129	117	
			REVISED -			CONTRACT NO. 60V39					
			REVISED -			ILLINOIS FED. AID PROJECT					

REVISD SHEET 4/13/2021

NO.	AREAS CHECKED
NO.	AREAS CHECKED
NO.	AREAS CHECKED
NO.	AREAS CHECKED
NO.	AREAS CHECKED
NO.	AREAS CHECKED
NO.	AREAS CHECKED
NO.	AREAS CHECKED

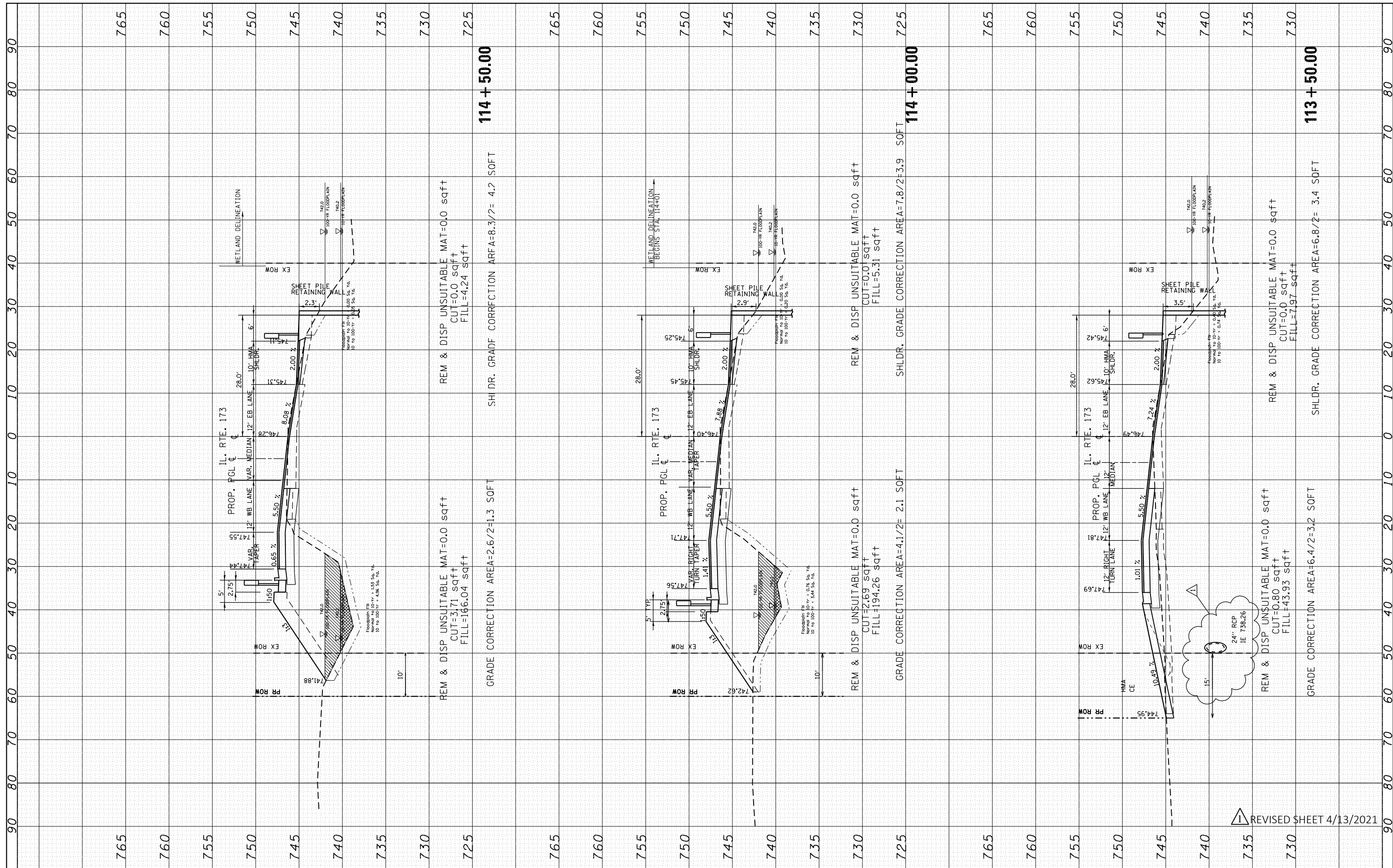
BY	DATE
BY	DATE
BY	DATE
BY	DATE
BY	DATE
BY	DATE
BY	DATE
BY	DATE



FILE NAME =	USER NAME = kalorm	DESIGNED -	REVISED -	STATE OF ILLINOIS DEPARTMENT OF TRANSPORTATION	CROSS SECTIONS IL. ROUTE 173 AT NORTH LAKE ST.	F.A.P. R.T.E.	SECTION	COUNTY	TOTAL SHEETS	SHEET NO.	
Default	Default	Default	Default			303	(134&134XIN	LAKE	129	118	
						CONTRACT NO. 60V39					
						ILLINOIS FED. AID PROJECT					
PLOT SCALE = 20.0000' / in. PLOT DATE = 4/12/2021			CHECKED - DATE -		SCALE: SHEET OF SHEETS STA. 113+08.70 TO STA. 113+36.64		REVISED SHEET 4/13/2021				

FINAL SURVEY	SURVEYED	BY	DATE
NOTE BOOK	PLOTTED		
AREAS CHECKED	TEMPLATE		
	AREAS CHECKED		

ORIGINAL SURVEY	SURVEYED	BY	DATE
NOTE BOOK	PLOTTED		
AREAS CHECKED	TEMPLATE		
	AREAS CHECKED		



FILE NAME =	USER NAME = kalorm	DESIGNED -	REVISOR -
p:\planroom\dotillinois.gov\PIDOT\Documents\DOT Offices\District 1\Projects\PI171909\CADD\Drawings\PI171909-sh-xssht-IL173.dgn		ARK - 04/12/2021	
PLOT SCALE = 20.0000' / in.	CHECKED -	REVISOR -	
PLOT DATE = 4/12/2021	DATE -	REVISOR -	

**STATE OF ILLINOIS
DEPARTMENT OF TRANSPORTATION**

CROSS SECTIONS			
IL. ROUTE 173 AT NORTH LAKE ST.			
SCALE:	SHEET	OF	SHEETS
			STA. 113+50.00 TO STA. 114+50.00

F.A.P. RTE.	SECTION	COUNTY	TOTAL SHEETS	SHEET NO.
303	(134&134XIN	LAKE	129	119
				CONTRACT NO. 60V39
ILLINOIS FED. AID PROJECT				

REVISOR'S MARK: REVISED SHEET 4/13/2021

114 + 50.00
SH DR. GRADE CORRECTION AREA=8.3/2= 4.2 SQFT
REM & DISP UNSUITABLE MAT=0.0 sqft
CUT=0.0 sqft
FILL=4.24 sqft

GRADE CORRECTION AREA=2.6/2=1.3 SQFT
REM & DISP UNSUITABLE MAT=0.0 sqft
CUT=3.71 sqft
FILL=166.04 sqft

REM & DISP UNSUITABLE MAT=0.0 sqft
CUT=0.0 sqft
FILL=5.31 sqft
SHLDR. GRADE CORRECTION AREA=7.8/2=3.9 SQFT

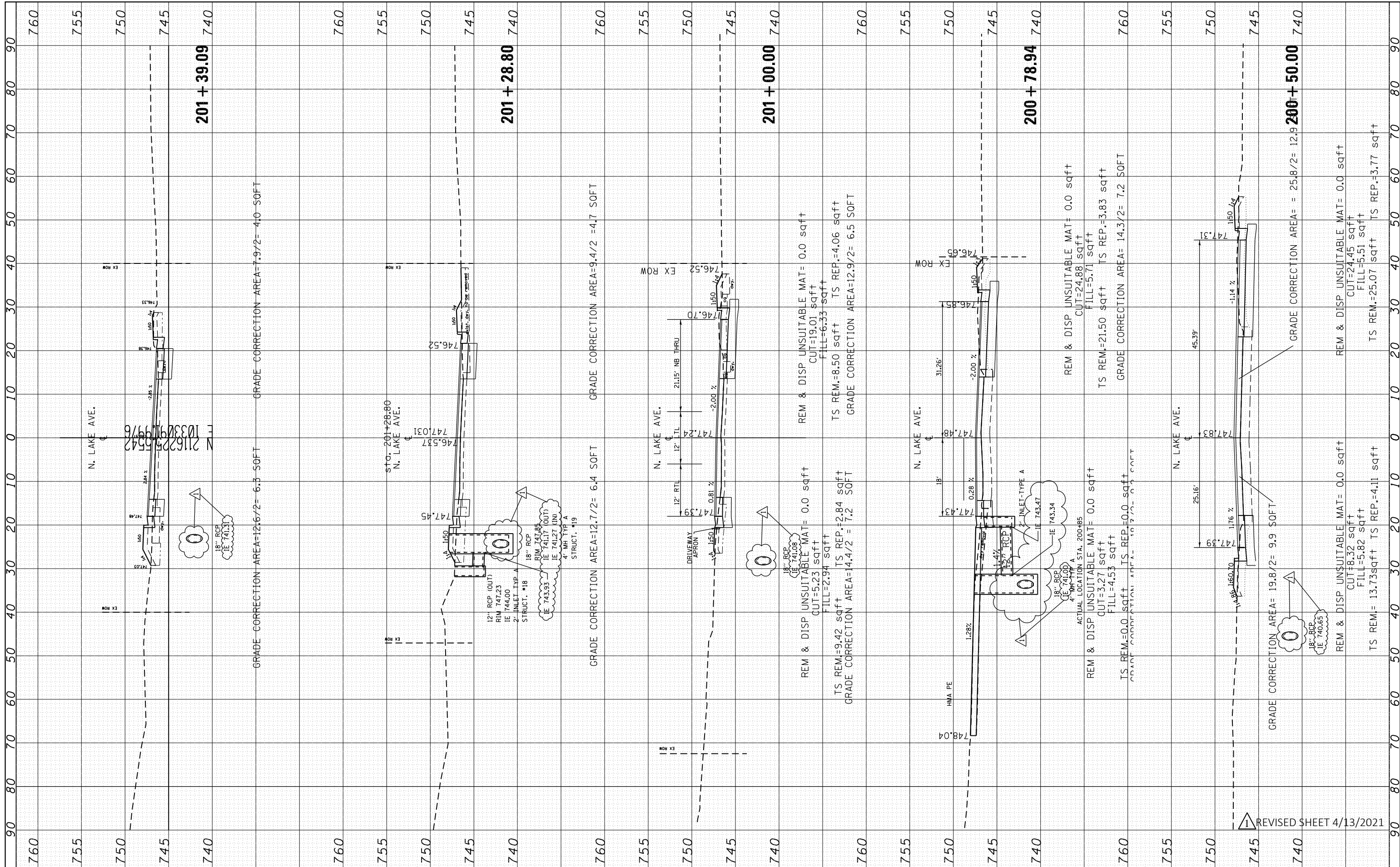
GRADE CORRECTION AREA=4.1/2= 2.1 SQFT
REM & DISP UNSUITABLE MAT=0.0 sqft
CUT=2.69 sqft
FILL=194.26 sqft

REM & DISP UNSUITABLE MAT=0.0 sqft
CUT=0.80 sqft
FILL=43.93 sqft
GRADE CORRECTION AREA=6.4/2=3.2 SQFT

REM & DISP UNSUITABLE MAT=0.0 sqft
CUT=0.0 sqft
FILL=7.97 sqft
SHLDR. GRADE CORRECTION AREA=6.8/2= 3.4 SQFT

113 + 50.00

ORIGINAL SURVEY NO.	DATE	BY
SURVEYED PLOTTED	DATE	BY
NOTE BOOK	DATE	BY
AREAS CHECKED	DATE	BY
AREAS CHECKED	DATE	BY
AREAS CHECKED	DATE	BY



FILE NAME =	USER NAME = kalorm	DESIGNED -	REVISED -
...	ARK - 4/12/2021
...
...
...

**STATE OF ILLINOIS
DEPARTMENT OF TRANSPORTATION**

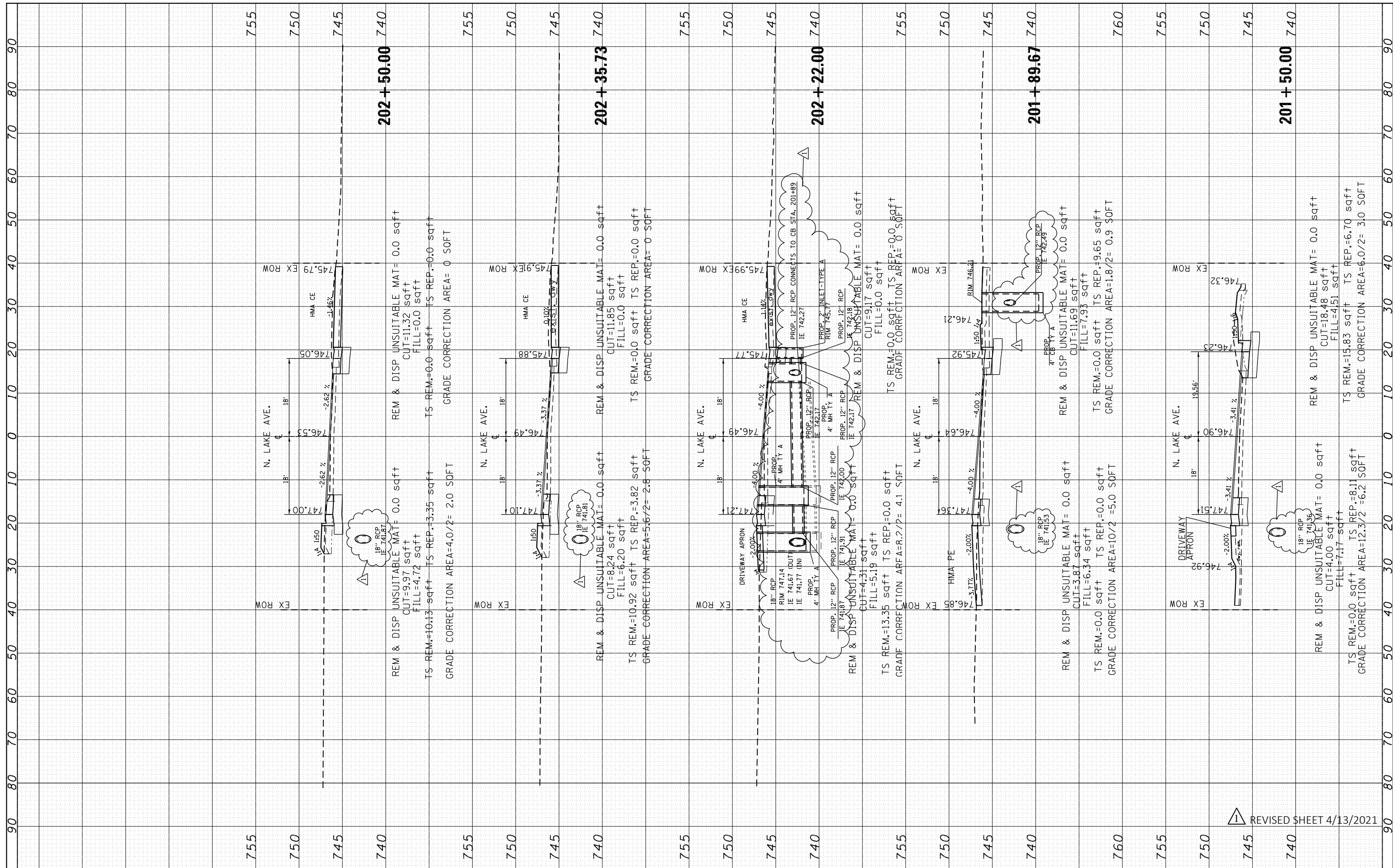
CROSS SECTIONS IL. RTE. 173 AT NORTH LAKE AVE.			
SCALE:	SHEET 1	OF 5 SHEETS	STA. 200+50.00 TO STA. 201+39.09

F.A.P. R.E.	SECTION	COUNTY	TOTAL SHEETS	SHEET NO.
303	(134&134)XIN	LAKE	129	125
CONTRACT NO. 60V39				
ILLINOIS FED. AID PROJECT				

REVISED SHEET 4/13/2021

FINIAL SURVEY	SURVEYED	BY	DATE
NOTE BOOK	PLOTTED		
AREAS CHECKED	TEMPLATE		
	AREAS CHECKED		

ORIGINAL SURVEY	SURVEYED	BY	DATE
NOTE BOOK	PLOTTED		
AREAS CHECKED	TEMPLATE		
	AREAS CHECKED		



FILE NAME =	USER NAME = kalorm	DESIGNED -	REVISOR -
p:\planroom\dotillinois.gov\PIDOT\Documents\DOT Offices\District 1\Projects\PI171909\CADD\Drawings\PI171909-sh-xssh-NLake.dgn		DRWN	ARK - 4/12/2021
PLOT SCALE = 20.0000' / in.	CHECKED -	REVISOR -	
PLOT DATE = 4/12/2021	DATE -	REVISOR -	

**STATE OF ILLINOIS
DEPARTMENT OF TRANSPORTATION**

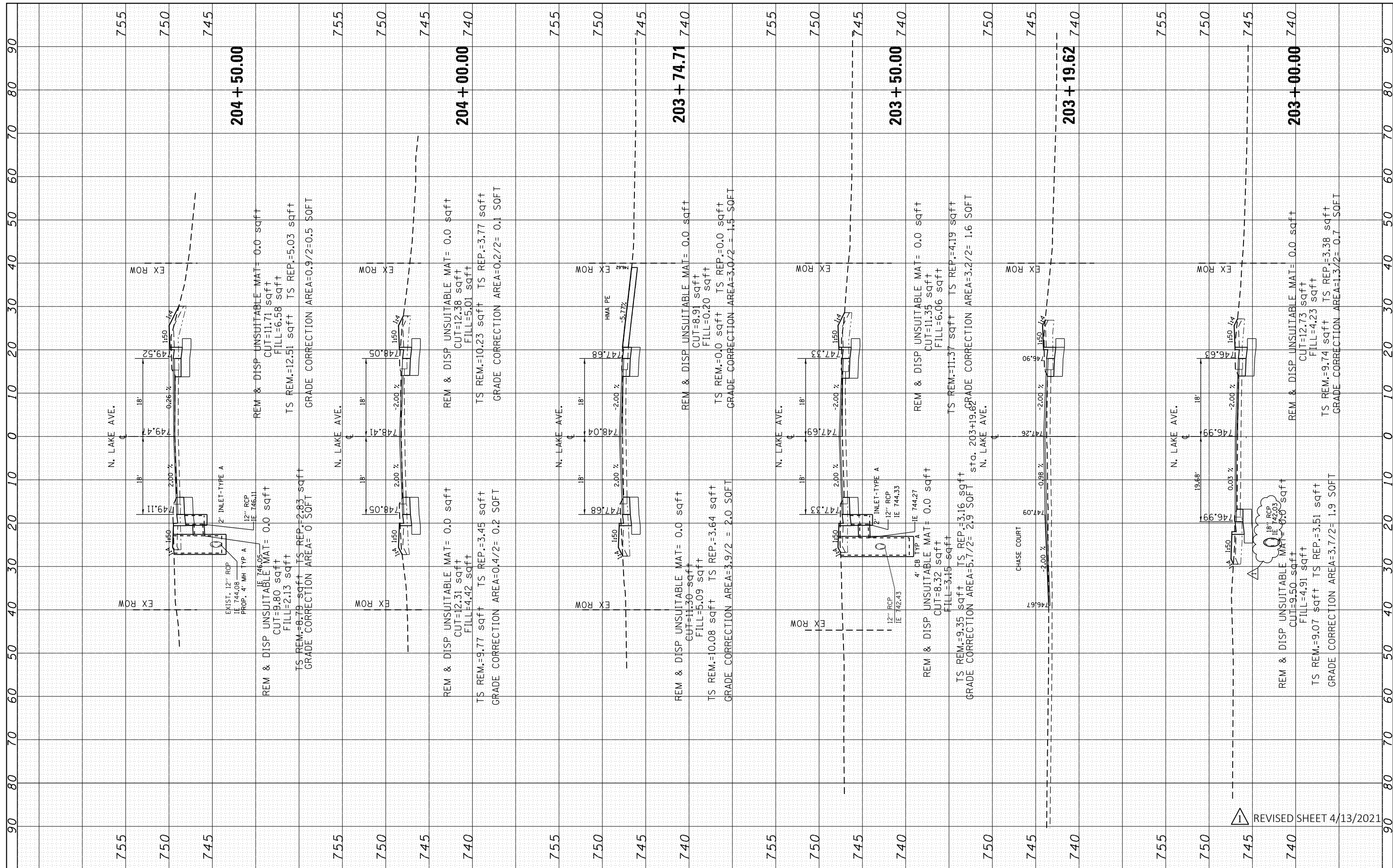
CROSS SECTIONS IL RTE. 173 AT NORTH LAKE AVE.			
SCALE:	SHEET 2	OF 5 SHEETS	STA. 201+50.00 TO STA. 202+50.00

F.A.P. RTE.	SECTION	COUNTY	TOTAL SHEETS	SHEET NO.
303	(134&134XIN	LAKE	129	126
CONTRACT NO. 60V39				
ILLINOIS FED. AID PROJECT				

REVISOR'S MARK: REVISED SHEET 4/13/2021

NO.	
AREAS CHECKED	
NOTE BOOK	
TEMPLATE	
PLOTTED	
SURVEYED	
BY	
DATE	

NO.	
AREAS CHECKED	
TEMPLATE	
PLOTTED	
SURVEYED	
BY	
DATE	



FILE NAME =	USER NAME = kalorm	DESIGNED -	REVISED -
p:\planroom\dotillinois.gov\DOT\Documents\DOT Offices\District 1\Projects\171909\CADD\Drawn\PI171909-sh-xssht-NLake.dgn			ARK - 4/12/2021
PLOT SCALE = 20.0000' / in.	CHECKED -	REVISED -	REVISED -
PLOT DATE = 4/12/2021	DATE -	REVISED -	REVISED -

**STATE OF ILLINOIS
DEPARTMENT OF TRANSPORTATION**

**CROSS SECTIONS
IL RTE. 173 AT NORTH LAKE AVE.**

SCALE: SHEET 3 OF 5 SHEETS STA. 203+00.00 TO STA. 204+50.00

F.A.P. RTE.	SECTION	COUNTY	TOTAL SHEETS	SHEET NO.
303	(134&134XIN	LAKE	129	127
CONTRACT NO. 60V39			ILLINOIS FED. AID PROJECT	

REVISOR SHEET 4/13/2021