

STATE OF ILLINOIS
DEPARTMENT OF TRANSPORTATION

F.A.S. RTE.	SECTION	COUNTY	TOTAL SHEETS	SHEET NO.
1197	110BR-2	WHITESIDE	15	1
		ILLINOIS	CONTRACT NO. 64P65	

FOR INDEX OF SHEETS, SEE SHEET NO. 2

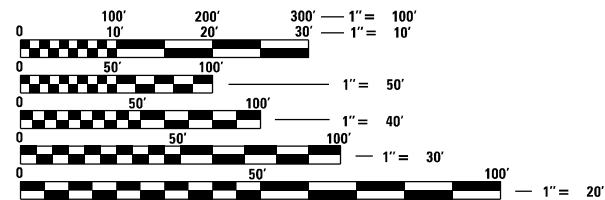
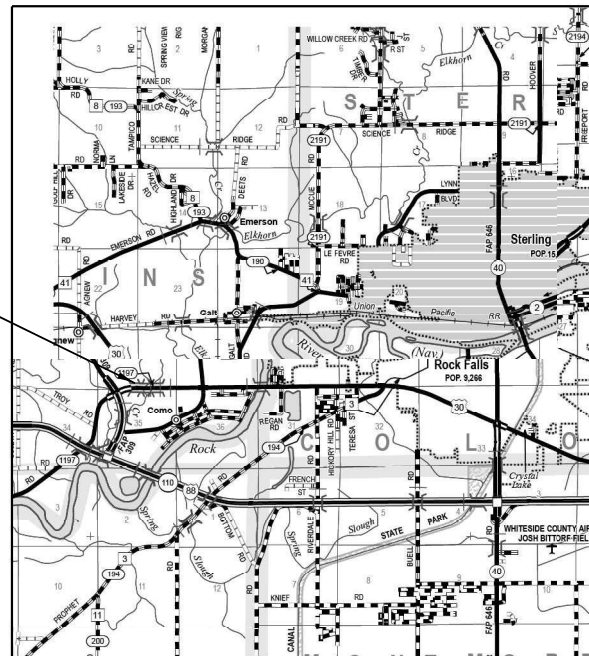
PROPOSED HIGHWAY PLANS

F.A.S. ROUTE 1197 (US 30)
SECTION (110BR-2)BJR

BRIDGE REPAIRS
WHITESIDE COUNTY
C-92-008-21



PROJECT LOCATION



FULL SIZE PLANS HAVE BEEN PREPARED USING STANDARD ENGINEERING SCALES, REDUCED SIZED PLANS WILL NOT CONFORM TO STANDARD SCALES. IN MAKING MEASUREMENTS ON REDUCED PLANS, THE ABOVE SCALES MAY BE USED.

J.U.L.I.E.
JOINT UTILITY LOCATION INFORMATION FOR EXCAVATORS
1-800-892-0123
OR 811

PROJECT ENGINEER SCOTT WYATT, PE, SE
PROJECT MANAGER MAHMOUD ETEMADI, PE

GROSS LENGTH = 120.08 FT. = 0.022 MILE
NET LENGTH = 120.08 FT. = 0.022 MILE

CONTRACT NO. 64P65

STATE OF ILLINOIS
DEPARTMENT OF TRANSPORTATION

SUBMITTED February 17, 20 21
[Signature]
REGIONAL ENGINEER

March 19, 2021
[Signature]
ENGINEER OF DESIGN AND ENVIRONMENT

March 19, 2021
[Signature]
DIRECTOR OF HIGHWAYS PROJECT IMPLEMENTATION

PRINTED BY THE AUTHORITY
OF THE STATE OF ILLINOIS

SHEET INDEX

1. COVER
2. GENERAL NOTES/ CONSTRUCTION SEQUENCE
3. SCHEDULE OF QUANTITIES
4. STAGING TYPICAL SECTION
5. MAINTENANCE OF TRAFFIC PLAN STAGE I
6. MAINTENANCE OF TRAFFIC PLAN STAGE II
7. LINCOLN RD / MOLINE RD INT. MAINTENANCE OF TRAFFIC STAGE I & II
8. TEMPORARY TRAFFIC SIGNAL PLAN
9. PERMANENT STRIPING PLAN
10. GENERAL PLAN AND ELEVATION
11. CROSS SECTION AND STAGE CONSTRUCTION DETAILS
12. JOINT REPLACEMENT DETAILS
13. STAGE CONSTRUCTION DETAILS
14. PREFORMED JOINT STRIP SEAL
15. BAR SPLICER ASSEMBLY AND MECHANICAL SPLICER DETAILS

STATE HIGHWAY STANDARDS

- | | |
|-----------|--|
| 000001-08 | ABBREVIATIONS, SYMBOLS AND PATTERNS |
| 701006-05 | OFF-RD OPERATIONS, 2L, 2W, 15' TO 24" FROM PAVEMENT EDGE |
| 701201-05 | LANE CLOSURE, 2L, 2W, DAY ONLY, FOR SPEEDS > 45 MPH |
| 701301-04 | LANE CLOSURE, 2L, 2W, SHORT TIME OPERATIONS |
| 701311-03 | LANE CLOSURE, 2L, 2W, MOVING OPERATIONS-DAY ONLY |
| 701321-18 | LANE CLOSURE, 2L, 2W, BRIDGE REPAIR WITH BARRIER |
| 701901-08 | TRAFFIC CONTROL DEVICES |
| 704001-08 | TEMPORARY CONCRETE BARRIER |
| 782006-01 | GUARDRAIL AND BARRIER WALL REFLECTOR MOUNTING DETAILS |
| 862001-01 | UNINTERRUPTABLE POWER SUPPLY (UPS) |
| 880006-01 | TRAFFIC SIGNAL MOUNTING DETAILS |
| 886001-01 | DETECTOR LOOP INSTALLATIONS |
| 886006-01 | TYPICAL LAYOUTS FOR DETECTOR LOOPS |

MAINTENANCE OF TRAFFIC GENERAL NOTES

1. THE MAINTENANCE OF TRAFFIC CONTROL (MOT) PLANS SHALL SERVE AS A GUIDE FOR SAFE DIVERSION OF TRAFFIC DURING EXECUTION OF THIS CONTRACT. HOWEVER, THE CONTRACTOR MAY MODIFY THE MOT PLANS TO MEET CONSTRUCTION NEEDS, BUT NOT AT THE EXPENSE OF PUBLIC SAFETY OR CONVENIENCE. ANY CHANGES TO THE MOT PLANS SHALL BE SUBMITTED TO THE ENGINEER FOR APPROVAL.
2. THE ENGINEER SHALL BE INFORMED 48 HOURS IN ADVANCE OF ANY PROPOSED CHANGE TO THE MOT PLANS.
3. ALL EXISTING PAVEMENT MARKINGS IN CONFLICT WITH THE MAINTENANCE OF TRAFFIC STRIPING SHALL BE REMOVED TO THE LIMITS SHOWN IN THE PLANS.
4. ALL TEMPORARY PAVEMENT MARKING WHICH CONFLICTS WITH THE NEXT STAGE OR FINAL STRIPING SHALL BE REMOVED TO THE LIMITS SHOWN IN THE PLANS AND IN THE SCHEDULE OF PAVEMENT MARKING.
5. ALL TRAFFIC CONTROL DEVICES USED FOR THE MAINTENANCE OF TRAFFIC, AS DETAILED ON THE PLANS OR HIGHWAY STANDARD, SHALL BE REFLECTORIZED PRIOR TO INSTALLATION AND CLEANED AS SPECIFIED IN THE MAINTENANCE OF TRAFFIC SPECIAL PROVISIONS OR AS DIRECTED BY THE ENGINEER.
6. ALL DRUMS, VERTICAL PANELS AND BARRICADES ADJACENT TO THE EDGE OF TRAVELED WAY SHALL BE EQUIPPED WITH BI-DIRECTIONAL STEADY-BURNING LIGHTS.
7. ALL EXISTING SIGNS WITHIN MAINTENANCE OF TRAFFIC LIMITS WHICH ARE OBSCURED BY OR INTERFERE WITH CONSTRUCTION OPERATIONS AND MAINTENANCE OF TRAFFIC, SHALL BE COVERED OR REMOVED BY THE CONTRACTOR UNLESS SPECIFIED IN THE PLANS OR WHEN DIRECTED BY THE ENGINEER. THIS WORK SHALL BE IN ACCORDANCE WITH ARTICLE 107.25 OF THE IDOT STANDARD SPECIFICATIONS.
8. ORIGINAL STRUCTURE AND SECTION NUMBERS ARE INDICATED IN THE MOT PLANS AS AN ADDITIONAL INFORMATION SOURCE IF NEEDED.
9. THE CONTRACTOR SHALL CONTACT THE IDOT DISTRICT 2 ENGINEER AT (815)284-2271 A MINIMUM OF 72 HOURS IN ADVANCE OF BEGINNING WORK.

SUGGESTED MAINTENANCE OF TRAFFIC SEQUENCING

- PRESTAGE**
 INSTALL CONSTRUCTION TRAFFIC CONTROL SIGNS AND BARRICADES. LOCATIONS DO NOT CHANGE DURING STAGE I OR II UNLESS OTHERWISE DIRECTED BY THE ENGINEER.
- INSTALL TEMPORARY TRAFFIC SIGNALS AND DETECTION SYSTEM. ATTACH INTERCONNECT CABLE AND SERVICE DROP TO EXISTING ADJACENT UTILITY POLES. CONTRACTOR TO MAKE REQUIRED PERMITTING AND OTHER ARRANGEMENTS WITH IDOT AND APPLICABLE UTILITY COMPANIES. LOCATIONS DO NOT CHANGE DURING STAGE I OR II UNLESS OTHERWISE DIRECTED BY THE ENGINEER. COST INCLUDED IN ITEM "TEMPORARY BRIDGE TRAFFIC SIGNAL INSTALLATION".
- REMOVE EXISTING PAVEMENT MARKINGS TO THE LIMITS SHOWN IN THE PLANS.
- STAGE I**
 INSTALL DRUM TAPERS AND TEMPORARY CONCRETE BARRIER FOR STAGE I ROADWAY DETOUR.
- INSTALL TEMPORARY PAVEMENT MARKINGS FOR STAGE I ROADWAY DETOUR.
- STAGE II**
 REMOVE STAGE I ROADWAY DETOUR TEMPORARY PAVEMENT MARKING.
- MOVE DRUM TAPERS, TEMPORARY CONCRETE BARRIER, AND IMPACT ATTENUATORS TO STAGE II ROADWAY DETOUR LOCATION.
- INSTALL TEMPORARY PAVEMENT MARKINGS FOR STAGE II ROADWAY DETOUR.
- POST STAGE**
 REMOVE ALL TEMPORARY CONCRETE BARRIERS, IMPACT ATTENUATORS AND DRUMS.
- REMOVE TEMPORARY SIGNALS, DETECTION, INTERCONNECT CABLE AND SERVICE DROP.
- REMOVE STAGE II ROADWAY DETOUR TEMPORARY PAVEMENT MARKINGS.
- INSTALL PERMANENT PAVEMENT MARKINGS.
- REMOVE ALL REMAINING CONSTRUCTION SIGNS AND BARRICADES.

PAY ITEMS FOR MAINTENANCE OF TRAFFIC WORK

- ITEM "TRAFFIC CONTROL AND PROTECTION, STANDARD 701201" IS INTENDED FOR THE MATERIAL, EQUIPMENT AND LABOR NECESSARY TO WARN AND CONTROL TRAFFIC IN ACCORDANCE WITH IDOT STANDARD 701201 DURING INSTALLATION, IMPLEMENTATION AND REMOVAL OF TRAFFIC SIGNALS, TEMPORARY CONCRETE BARRIERS, AND ATTENUATORS.
- ITEM "TRAFFIC CONTROL AND PROTECTION, STANDARD 701321" IS INTENDED FOR THE MATERIAL, EQUIPMENT AND LABOR NECESSARY FOR THE INSTALLATION, MAINTENANCE AND ULTIMATE REMOVAL OF SIGNS, DRUMS, LIGHTS, PANELS, AND REFLECTORS NECESSARY FOR STAGED WORKZONE PROTECTION AS SPECIFIED IN THE PLANS AND SPECIFICATIONS.
- ITEMS "TEMPORARY CONCRETE BARRIER" AND "RESET TEMPORARY CONCRETE BARRIER" ARE INTENDED FOR THE MATERIAL, EQUIPMENT AND LABOR NECESSARY FOR STAGE I INSTALLATION, STAGE II RELOCATION, MAINTENANCE AND ULTIMATE REMOVAL OF TEMPORARY CONCRETE BARRIER TO THE LIMITS SPECIFIED IN THE PLANS AND SPECIFICATIONS.
- ITEMS "IMPACT ATTENUATORS, TEMPORARY" AND "IMPACT ATTENUATORS, RELOCATE" ARE INTENDED FOR THE MATERIAL, EQUIPMENT AND LABOR NECESSARY FOR STAGE I INSTALLATION, STAGE II RELOCATION, MAINTENANCE AND ULTIMATE REMOVAL OF TEMPORARY IMPACT ATTENUATORS OF THE TYPE, AND TO THE LIMITS SPECIFIED IN THE PLANS AND SPECIFICATIONS.
- ITEM "PAVEMENT MARKING TAPE" IS INTENDED FOR THE MATERIAL, EQUIPMENT AND LABOR NECESSARY TO PLACE AND MAINTAIN TEMPORARY PAVEMENT MARKING TAPE OF THE TYPE, SIZE AND LIMITS SPECIFIED IN THE PLANS AND SPECIFICATIONS.
- ITEM "PAVEMENT MARKING TAPE" IS INTENDED FOR THE MATERIAL, EQUIPMENT AND LABOR NECESSARY TO PLACE AND MAINTAIN TEMPORARY PAVEMENT MARKING TAPE OF THE TYPE, SIZE AND LIMITS SPECIFIED IN THE PLANS AND SPECIFICATIONS.
- ITEM "TEMPORARY PAVEMENT MARKING REMOVAL" IS INTENDED FOR THE MATERIAL, EQUIPMENT AND LABOR NECESSARY TO REMOVE TEMPORARY TAPE TO THE LIMITS SPECIFIED IN THE PLANS.
- ITEM "PAINT PAVEMENT MARKING LINE, 4" IS INTENDED FOR THE MATERIAL, EQUIPMENT AND LABOR NECESSARY TO PLACE PERMANENT 4" PAVEMENT MARKING OF THE TYPE AND TO THE LIMITS SPECIFIED IN THE PLANS AND SPECIFICATIONS.
- ITEM "TEMPORARY BRIDGE TRAFFIC INSTALLATION" IS INTENDED FOR THE PERMITTING, MATERIAL, EQUIPMENT AND LABOR NECESSARY TO INSTALL, OPERATE, MAINTAIN AND ULTIMATELY REMOVE A COMPLETE TEMPORARY TRAFFIC SIGNAL SYSTEM INCLUDING DETECTION AS SPECIFIED IN THE PLANS AND SPECIFICATIONS.

MODEL: D:\hilton\Drawings\Drawings\2021\2021-11-11\11-11-2021-11-11\MOT NOTES.dwg

HAMILTON CONSULTING ENGINEERS, INC.
 3230 Executive Drive, Joliet, Illinois 60431
 Ph: (815) 730-3444 Fax: (815) 730-6703
 LICENSE NO. 184-003780
 © 2020 HAMILTON CONSULTING ENGINEERS, INC.

USER NAME = scottw	DESIGNED -	REVISED -
PLOT SCALE = 100.0000' / in.	DRAWN - DWS	REVISED -
PLOT DATE = 02/11/2021	CHECKED -	REVISED -
	DATE - 01-11-2021	REVISED -

**STATE OF ILLINOIS
 DEPARTMENT OF TRANSPORTATION**

**US 30 at ELKHORN CREEK OVERFLOW
 GENERAL NOTES / CONSTRUCTION SEQUENCE**

SCALE: NONE SHEET OF SHEETS STA. TO STA.

F.A.S. RTE.	SECTION	COUNTY	TOTAL SHEETS	SHEET NO.
1197	(110BR-2)BJR	WHITESIDE	15	2
CONTRACT NO. 64P65				
ILLINOIS FED. AID PROJECT				

0047
100% STATE

CODE NO.	ITEM	UNIT	TOTAL QUANTITY
42001300	PROTECTIVE COAT	SQ YD	34.5
50102400	CONCRETE REMOVAL	CU YD	11.6
50300255	CONCRETE SUPERSTRUCTURE	CU YD	11.6
50800205	REINFORCEMENT BARS, EPOXY COATED	POUND	1450
50800515	BAR SPLICERS	EACH	24
52000110	PREFORMED JOINT STRIP SEAL	FOOT	85
67100100	MOBILIZATION	L SUM	1
70100405	TRAFFIC CONTROL AND PROTECTION, STANDARD 701321	EACH	1
70100450	TRAFFIC CONTROL AND PROTECTION, STANDARD 701201	L SUM	1
70106500	TEMPORARY BRIDGE TRAFFIC SIGNAL INSTALLATION	EACH	1
70107004	PAVEMENT MARKING BLACKOUT TAPE, 4"	FOOT	2,800
70300904	PAVEMENT MARKING TAPE, TYPE IV, 4"	FOOT	2,800
70300924	PAVEMENT MARKING TAPE TYPE IV, 24"	FOOT	24
70400100	TEMPORARY CONCRETE BARRIER	FOOT	238
70400200	RELOCATE TEMPORARY CONCRETE BARRIER	FOOT	238

0047
100% STATE

CODE NO.	ITEM	UNIT	TOTAL QUANTITY
70600251	IMPACT ATTENUATORS, TEMPORARY (NON-REDIRECTIVE, NARROW), TEST LEVEL 3	EACH	2
70600352	IMPACT ATTENUATORS, RELOCATE (NON-REDIRECTIVE, NARROW), TEST LEVEL 3	EACH	2
* 7801110	PAINT PAVEMENT MARKING LINE 4"	FOOT	1,328
X7030005	TEMPORARY PAVEMENT MARKING REMOVAL	SQ FT	1,915
44000155	HOT-MIX ASPHALT SURFACE REMOVAL, 1 1/2"	SQ YD	91.5
40604002	HOT-MIX ASPHALT SURFACE COURSE, IL-9.5FG, MIX "C", N70	TON	7.7
Z0016200	DECK SLAB REPAIR (PARTIAL)	SQ YD	10

*= SPECIALTY ITEM

MODEL: D:\nfil
 FILE NAME: C:\Users\scottw\Desktop\WO 2 004-0002 - Rock Falls Elkhorn Creek\Submittals\2021-11-15\sh-SDO.dgn
 3230 Executive Drive, Joliet, Illinois 60431
 Ph: (815) 730-3444 Fax: (815) 730-6703
 LICENSE NO. 184-002009
 © 2020 HAMILTON CONSULTING ENGINEERS, INC.

HAMILTON CONSULTING ENGINEERS, INC.

USER NAME = scottw
 PLOT SCALE = 2.0000"/in.
 PLOT DATE = 02/12/2021

DESIGNED - MGB
 DRAWN - DWS
 CHECKED - HJH
 DATE - 01-11-2021

REVISED -
 REVISED -
 REVISED -
 REVISED -

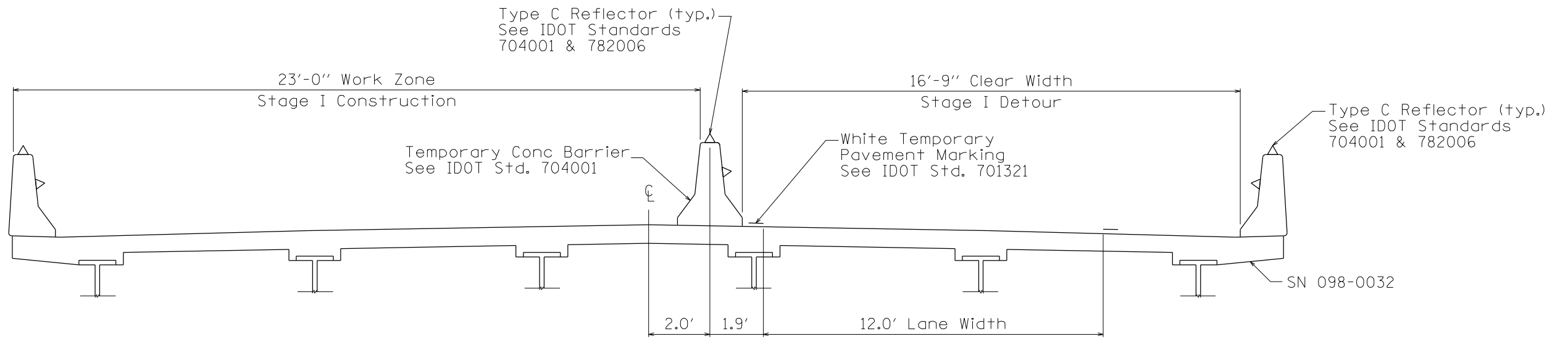
**STATE OF ILLINOIS
DEPARTMENT OF TRANSPORTATION**

**US 30 at ELKHORN CREEK OVERFLOW
SCHEDULE OF QUANTITIES**

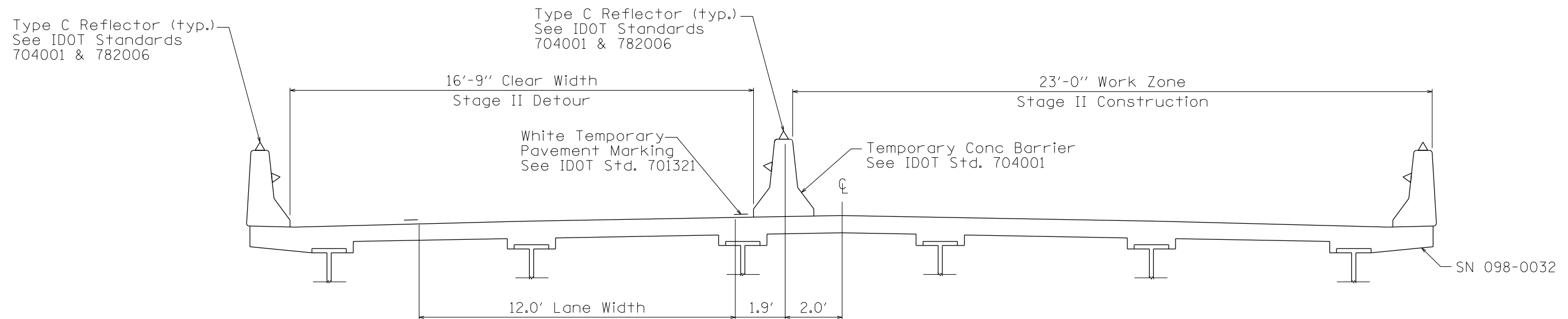
SCALE: NONE SHEET OF SHEETS STA. TO STA.

F.A.S. RTE.	SECTION	COUNTY	TOTAL SHEETS	SHEET NO.
1197	(110BR-2)BJR	WHITESIDE	16	3
			CONTRACT NO. 64P65	
ILLINOIS FED. AID PROJECT				

REV. 3/10/21 REV. 3/4/21 REV. 3/2/21 REV. 2/22/21



STAGE I



STAGE II

MODEL: Default
 FILE NAME: F:\projects\misc\cellar\mouat\200111\CAD\Project\HMDT\200111\A\stg1\DOT-SEC.dwg
 © 2020 HAMILTON CONSULTING ENGINEERS, INC.

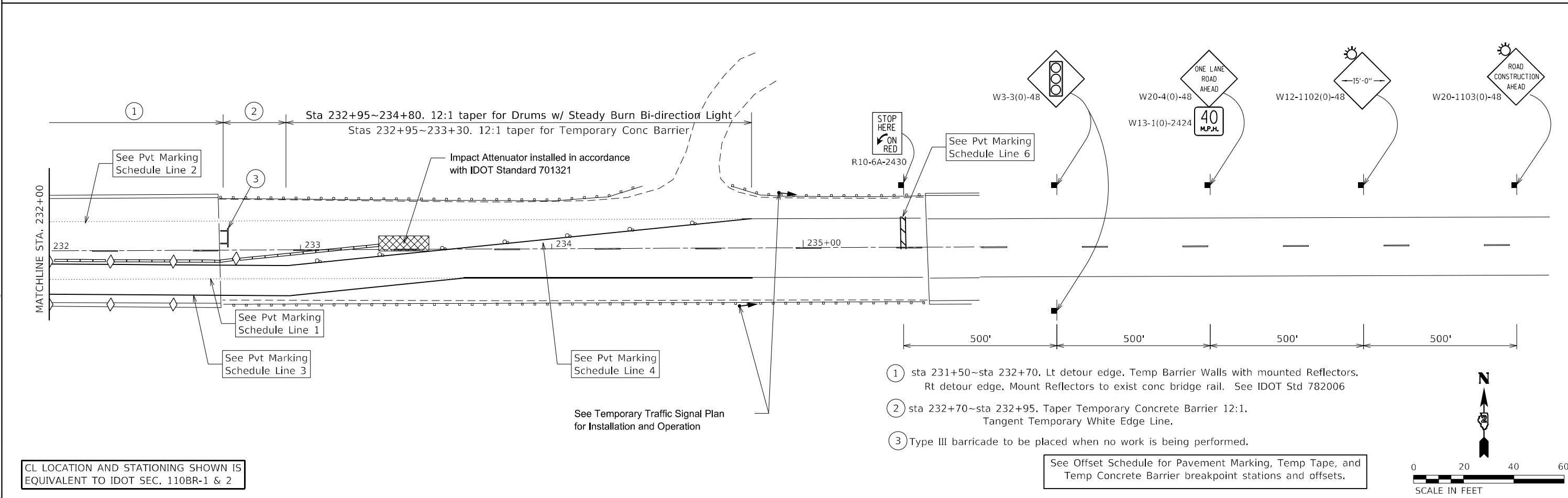
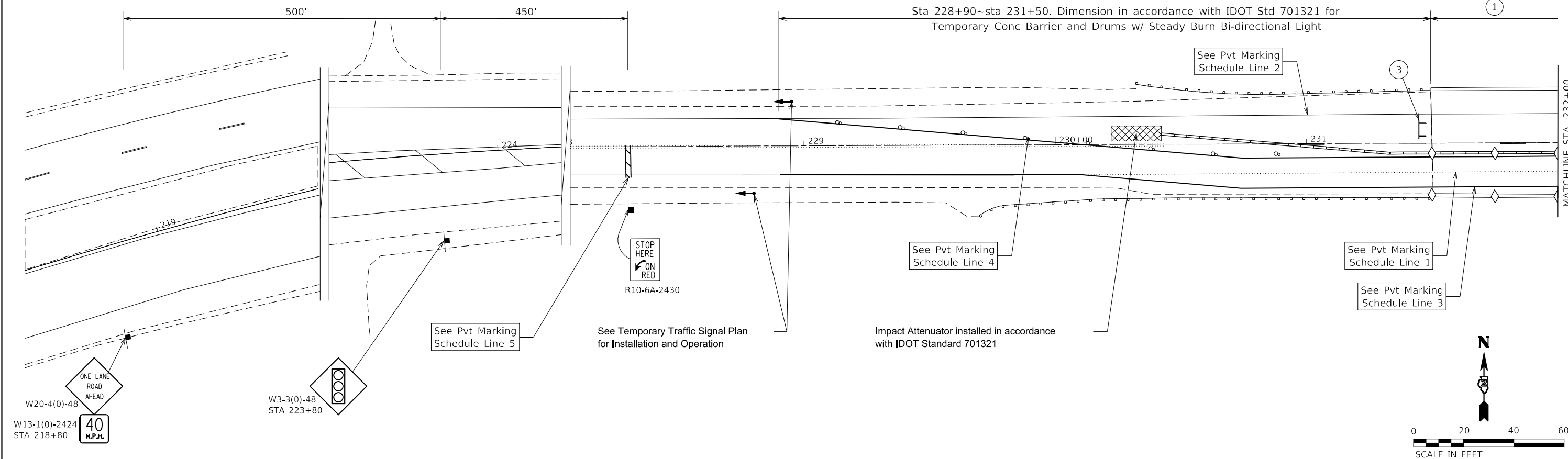
HAMILTON CONSULTING ENGINEERS, INC.
 3230 Executive Drive, Joliet, Illinois 60431
 Ph: (815) 730-3444 Fax: (815) 730-6703
 LICENSE NO. 184-003095
 © 2020 HAMILTON CONSULTING ENGINEERS, INC.

USER NAME = dws	DESIGNED -	REVISED -
	DRAWN - MGB	REVISED -
PLOT SCALE = 400,0000' / in.	CHECKED -	REVISED -
PLOT DATE = 2/9/2021	DATE - 01-11-2021	REVISED -

STATE OF ILLINOIS
DEPARTMENT OF TRANSPORTATION

US 30 at ELKHORN CREEK OVERFLOW STAGING TYPICAL SECTION			
SCALE: NTS	SHEET 4	OF SHEETS	STA. TO STA.

F.A.S. RTE.	SECTION	COUNTY	TOTAL SHEETS	SHEET NO.
1197	(1108R-2)BJR	WHITESIDE	4	4
CONTRACT NO. 64P65				
ILLINOIS FED. AID PROJECT				



MODEL: D:\proj\ElkHorn\ElkHorn.dwg
 FILE NAME: E:\proj\ElkHorn\ElkHorn.dwg
 PROJECT: ELKHORN CREEK OVERFLOW MAINTENANCE OF TRAFFIC PLAN STAGE I
 DATE: 11/11/2021

CL LOCATION AND STATIONING SHOWN IS EQUIVALENT TO IDOT SEC. 110BR-1 & 2

See Offset Schedule for Pavement Marking, Temp Tape, and Temp Concrete Barrier breakpoint stations and offsets.

- ① sta 231+50~sta 232+70. Lt detour edge. Temp Barrier Walls with mounted Reflectors. Rt detour edge. Mount Reflectors to exist conc bridge rail. See IDOT Std 782006
- ② sta 232+70~sta 232+95. Taper Temporary Concrete Barrier 12:1. Tangent Temporary White Edge Line.
- ③ Type III barricade to be placed when no work is being performed.

HAMILTON CONSULTING ENGINEERS, INC.
 3230 Executive Drive, Joliet, Illinois 60431
 Ph: (815) 730-3444 Fax: (815) 730-6703
 LICENSE NO. 184-003205
 © 2020 HAMILTON CONSULTING ENGINEERS, INC.

USER NAME = dws
 DESIGNED -
 DRAWN -
 CHECKED -
 PLOT DATE = 2/9/2021

DESIGNED -
 DRAWN -
 CHECKED -
 DATE = 01-11-2021

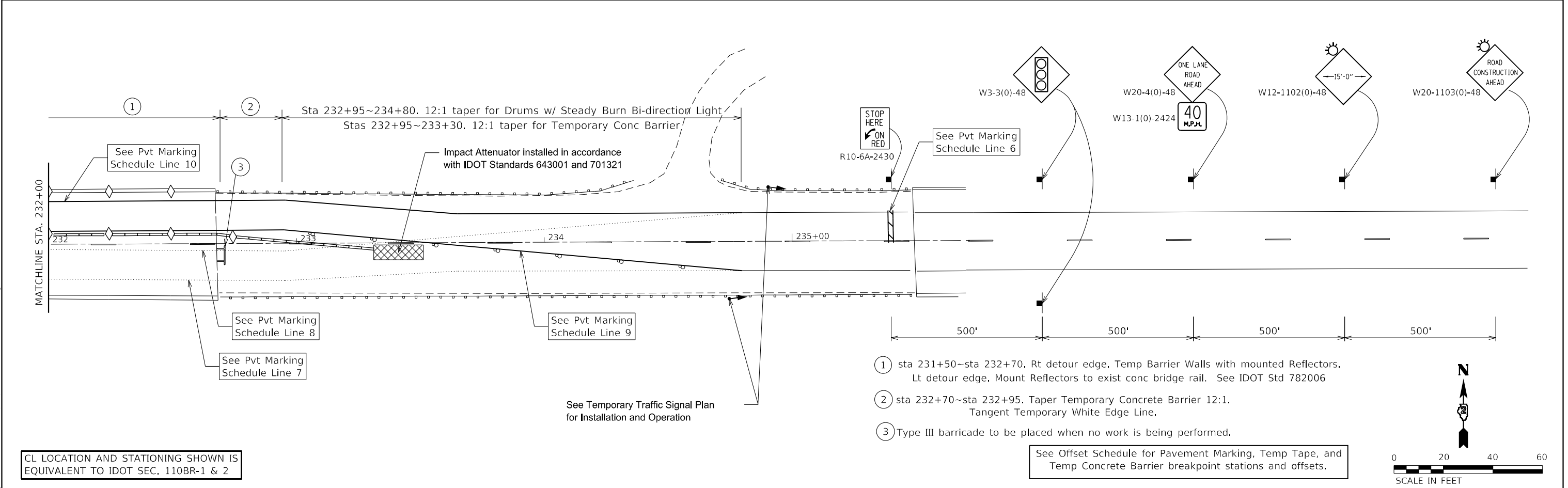
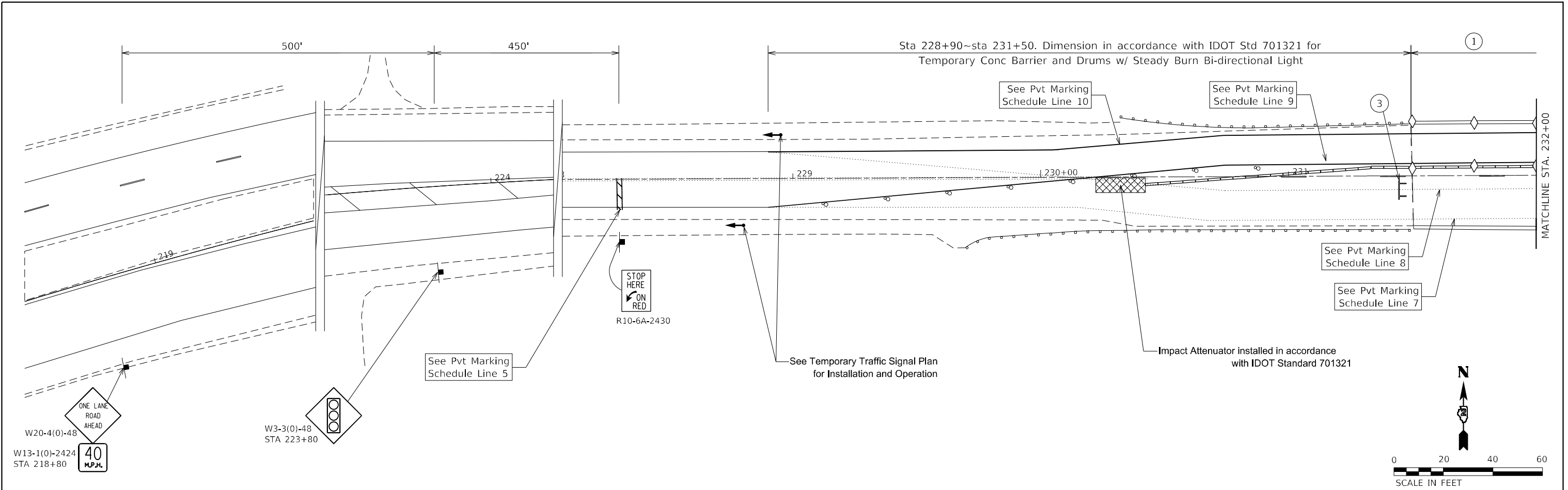
REVISED -
 REVISED -
 REVISED -
 REVISED -

**STATE OF ILLINOIS
 DEPARTMENT OF TRANSPORTATION**

**US 30 at ELKHORN CREEK OVERFLOW
 MAINTENANCE OF TRAFFIC PLAN STAGE I**

SCALE: SHEET OF SHEETS STA. TO STA.

F.A.S. RTE. 1197	SECTION (110BR-2)BJR	COUNTY WHITESIDE	TOTAL SHEETS 5	SHEET NO. 5
ILLINOIS FED. AID PROJECT			CONTRACT NO. 64P65	



CL LOCATION AND STATIONING SHOWN IS EQUIVALENT TO IDOT SEC. 110BR-1 & 2

- ① sta 231+50~sta 232+70. Rt detour edge. Temp Barrier Walls with mounted Reflectors. Lt detour edge. Mount Reflectors to exist conc bridge rail. See IDOT Std 782006
- ② sta 232+70~sta 232+95. Taper Temporary Concrete Barrier 12:1. Tangent Temporary White Edge Line.
- ③ Type III barricade to be placed when no work is being performed.

See Offset Schedule for Pavement Marking, Temp Tape, and Temp Concrete Barrier breakpoint stations and offsets.

HAMILTON CONSULTING ENGINEERS, INC.
3230 Executive Drive, Joliet, Illinois 60431
Ph: (815) 730-3444 Fax: (815) 730-6703
LICENSE NO. 184-003005
© 2020 HAMILTON CONSULTING ENGINEERS, INC.

USER NAME = dws	DESIGNED -	REVISED -
PLOT SCALE = 40,0000' / in.	DRAWN -	REVISED -
PLOT DATE = 2/9/2021	CHECKED -	REVISED -
	DATE - 01-11-2021	REVISED -

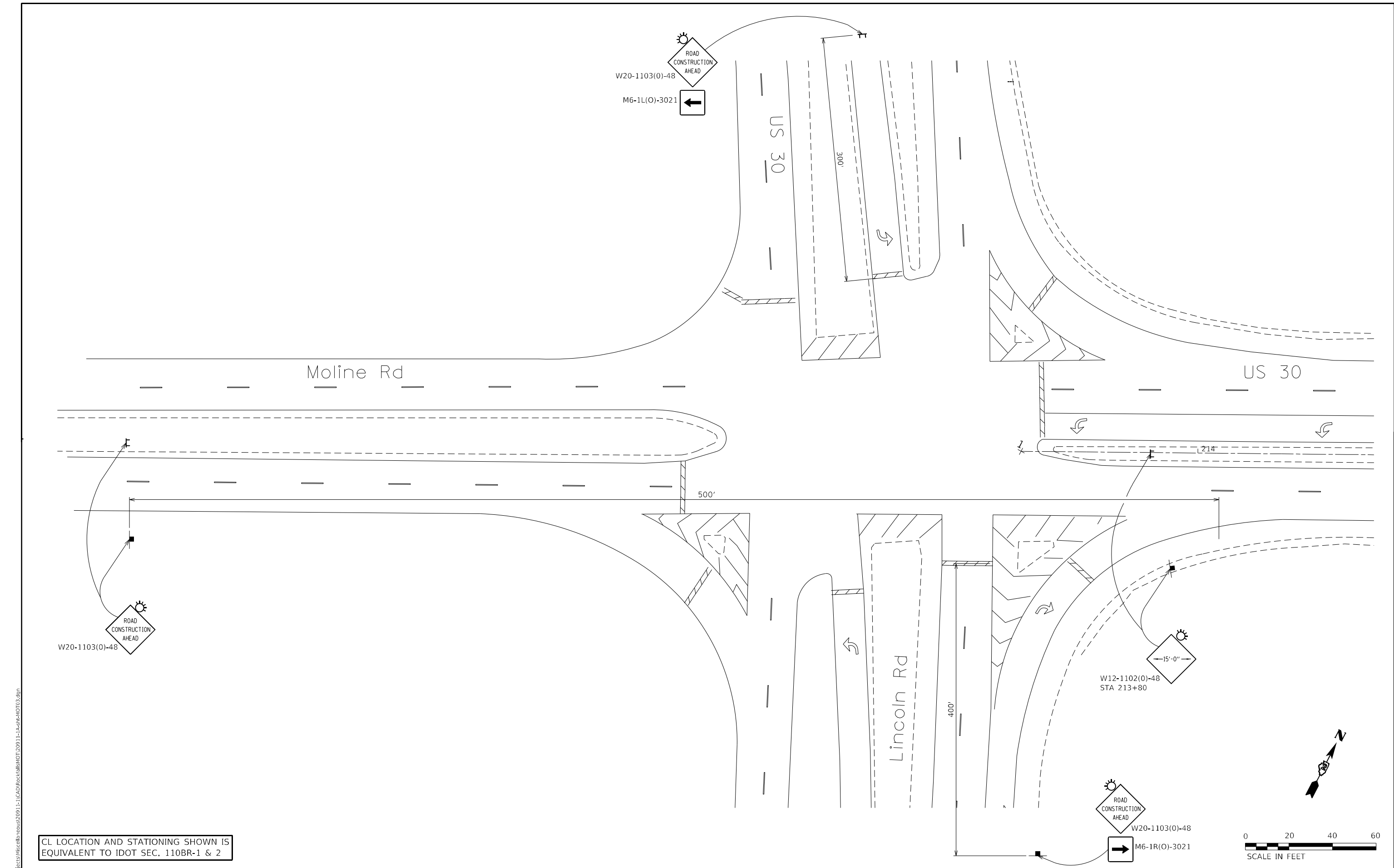
**STATE OF ILLINOIS
DEPARTMENT OF TRANSPORTATION**

**US 30 at ELKHORN CREEK OVERFLOW
MAINTENANCE OF TRAFFIC PLAN STAGE II**

SCALE:	SHEET	OF	SHEETS	STA.	TO	STA.
--------	-------	----	--------	------	----	------

F.A.S. RTE.	SECTION	COUNTY	TOTAL SHEETS	SHEET NO.
1197	(1108R-2)BJR	WHITESIDE	6	6
			CONTRACT NO. 64P65	
ILLINOIS		FED. AID PROJECT		

MODEL: D:\proj\1111\CAD\Project\1111\1111.dwg
FILE NAME: E:\proj\1111\CAD\Project\1111\1111.dwg



CL LOCATION AND STATIONING SHOWN IS EQUIVALENT TO IDOT SEC. 110BR-1 & 2

HAMILTON CONSULTING ENGINEERS, INC.
3230 Executive Drive, Joliet, Illinois 60431
Ph: (815) 730-3444 Fax: (815) 730-6703
E LICENSE NO. 184-002005
© 2020 HAMILTON CONSULTING ENGINEERS, INC.

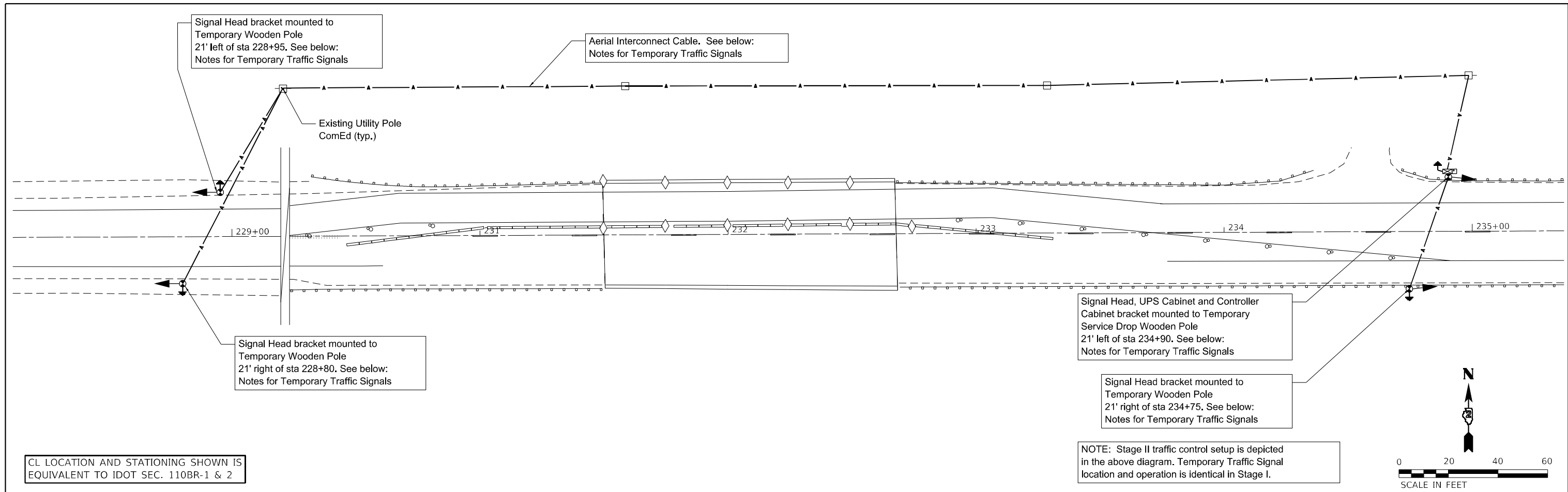
USER NAME = dws	DESIGNED -	REVISED -
PLOT SCALE = 40,0000 * / in.	DRAWN -	REVISED -
PLOT DATE = 2/9/2021	CHECKED -	REVISED -
	DATE - 01-11-2021	REVISED -

**STATE OF ILLINOIS
DEPARTMENT OF TRANSPORTATION**

**US 30 at ELKHORN CREEK OVERFLOW
LINCOLN RD/MOLINE RD INT. MAINTENANCE OF TRAFFIC STAGE I & II**

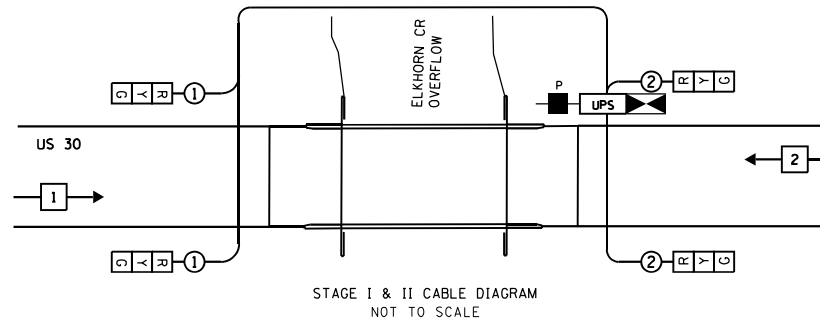
SCALE: SHEET OF SHEETS STA. TO STA.

F.A.S. RTE.	SECTION	COUNTY	TOTAL SHEETS	SHEET NO.
1197	(1108R-2)BJR	WHITESIDE	7	7
CONTRACT NO. 64P65				
ILLINOIS FED. AID PROJECT				



NOTES FOR TEMPORARY TRAFFIC SIGNALS

- ALL CONTROL EQUIPMENT FOR THE TEMPORARY TRAFFIC SIGNALS SHALL BE FURNISHED BY THE CONTRACTOR.
- ONLY CONTROLLERS SUPPLIED BY ONE OF THE IDOT APPROVED CLOSED LOOP EQUIPMENT MANUFACTURERS WILL BE APPROVED FOR USE AT TEMPORARY SIGNAL LOCATIONS. ALL CONTROLLERS USED FOR TEMPORARY TRAFFIC SIGNALS SHALL BE FULLY ACTIVATED NEMA MICROPROCESSOR BASED WITH RS232 DATA ENTRY PORTS COMPATIBLE WITH EXISTING MONITORING SOFTWARE APPROVED BY IDOT, INSTALLED IN A NEMA TS2 CABINET. ONLY ONE BRAND OF CONTROLLER WILL BE ACCEPTED FOR ANY ONE CONTRACT.
- ALL TRAFFIC SIGNAL SECTIONS SHALL BE LED AND 12" DIAMETER. HEADS SHALL BE BRACKET MOUNTED ON TEMPORARY WOODEN POLES IN ACCORDANCE WITH IDOT STANDARD 890006-01 AND AS INDICATED ON THE TEMPORARY SIGNAL PLAN OR AS DIRECTED BY THE ENGINEER. EACH TEMPORARY TRAFFIC SIGNAL HEAD SHALL HAVE ITS OWN CABLE FROM THE CONTROLLER CABINET TO THE SIGNAL HEAD.
- THE CONTRACTOR SHALL VERIFY CLEARANCE REQUIREMENTS WITH UTILITY COMPANIES AND CONTACT JULIE PRIOR TO INSTALLATION OF TEMPORARY WOODEN POLES. ANY REQUIRED MODIFICATIONS OR ADJUSTMENTS TO HEIGHT OR LOCATION MUST BE APPROVED BY THE ENGINEER.
- TEMPORARY SIGNALS SHALL BE POWERED AND INTERCONNECTED IN A MANNER APPROVED BY IDOT DISTRICT 2, AND SHALL INCLUDE AN UNINTERRUPTIBLE POWER SUPPLY IN ACCORDANCE WITH IDOT STANDARD 862001. ELECTRIC UTILITY SERVICE DROP LOCATION AND THE AERIAL INTERCONNECT CABLE ROUTING ALONG EXISTING UTILITY POLES SHOWN IN PLANS IS SUGGESTED. ULTIMATE SERVICE DROP LOCATION AND INTERCONNECT CABLE ROUTING, INCLUDING ALL REQUIRED PERMITTING AND OTHER ARRANGEMENTS NEEDED WITH IDOT AND UTILITY COMPANIES, SHALL BE THE RESPONSIBILITY OF THE CONTRACTOR.
- TRAFFIC SIGNAL MANAGEMENT SYSTEMS AND REQUIRED EQUIPMENT SHALL BE PLACED AND MAINTAINED IN OPERATION AS INDICATED ON THE PLANS AND TO THE SATISFACTION OF THE ENGINEER.
- THE TEMPORARY TRAFFIC SIGNAL DETECTION SYSTEM SHALL BE INSTALLED AND MAINTAINED IN ACCORDANCE WITH IDOT STANDARDS 701321, 886001 AND 886006, AND TO THE SATISFACTION OF THE ENGINEER.
- COST FOR ALL PERMITTING, INSTALLATION, POWER, AND MAINTENANCE FOR TEMPORARY TRAFFIC SIGNALS SHALL BE INCLUDED IN ITEM "TEMPORARY BRIDGE TRAFFIC SIGNAL INSTALLATION".



SYMBOL LEGEND

- EXISTING UTILITY POLE
- 3-1/C NO2 AERIAL CABLE ALUMINUM WITH MESSENGER WIRE
- GROUND ROD 5/8" DIA X 10'
- BRACKET MOUNTED SIGNAL HEAD
- TEMPORARY WOOD POLE NOMINAL 40 FT., CLASS 4
- TEMPORARY TRAFFIC CONTROLLER WITH UPS AND BOTTOM PLATE MOUNTED TO WOOD POLE
- SINGLE ENTRY PHASE

CONTACT INFORMATION

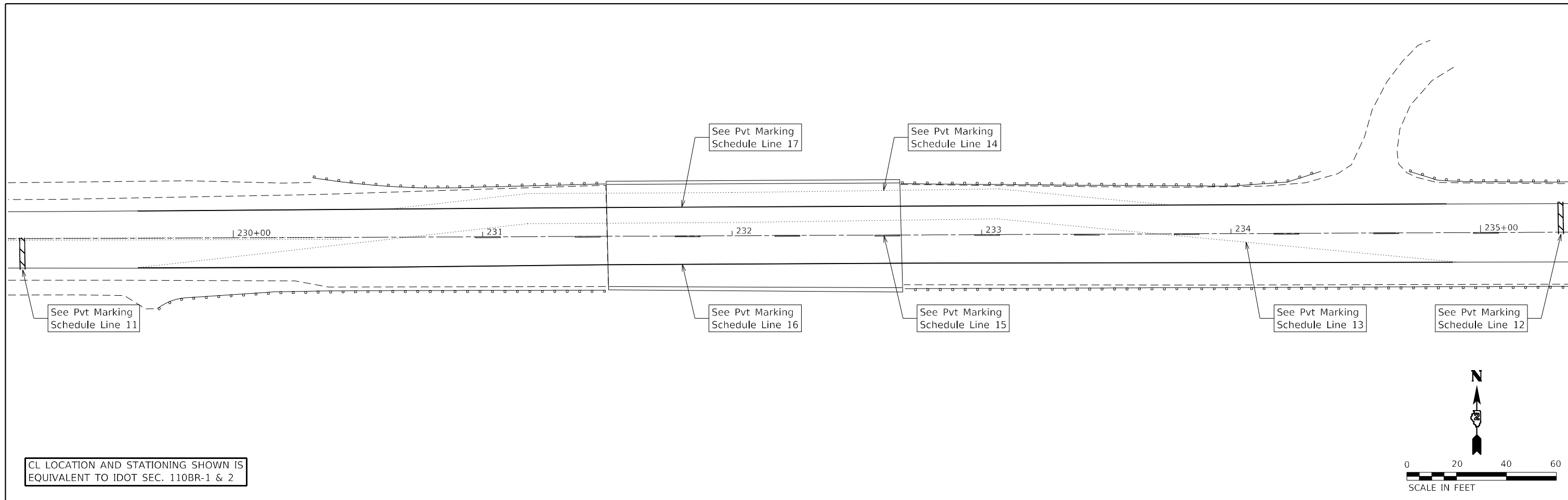
IDOT DISTRICT 2 - (815) 284-2271

ELECTRICITY PROVIDER & NORTH SIDE UTILITY POLE LINE
COM ED

SCHEDULE OF QUANTITIES

QUANTITY	UNIT	ITEM
1	EACH	TEMPORARY BRIDGE TRAFFIC SIGNAL INSTALLATION

STAGE I & II TRAFFIC SIGNAL SEQUENCE						
PHASE	A			B		
INTERVAL	1	2	3	4	5	6
TIME (SEC)	20	5	15	15	5	REST
	G	Y	R	R	R	R
	R	R	R	G	Y	R



CL LOCATION AND STATIONING SHOWN IS EQUIVALENT TO IDOT SEC. 110BR-1 & 2

PAVEMENT MARKING SCHEDULE

Line	STATION		Description	Location	TEMPORARY TAPE (LF)			REMOVAL (SF)	PERMANENT STRIPE (LF)		
	From	To			4" Blackout	4" White	24" White	Temp Mark	4" Yellow	4" White	
	Stage I										
1	228+90	234+80	Blackout Perm White Line 4"	Right Permanent Edgeline	590						
2	228+90	234+80	Blackout Perm White Line 4"	Left Permanent Edgeline	590						
3	228+90	234+80	Temporary Line White	Rt Stage I Detour Edgeline		590					
4	228+90	234+80	Temporary Line White	Lt Stage I Detour Edgeline		590					
5	228+30		Temporary Stop Bar	W End Stage I Detour				12			
6	235+40		Temporary Stop Bar	E End Stage I Detour				12			
Stage II											
7	228+90	234+80	Temp Line Blackout 4"	Rt Stage I Detour Edgeline	590						
8	228+90	234+80	Temp Line Blackout 4"	Lt Stage I Detour Edgeline	590						
9	228+90	234+80	Temporary Line White	Rt Stage II Detour Edgeline		590					
10	228+90	234+80	Temporary Line White	Lt Stage II Detour Edgeline		590					
Post Stage											
11	228+30		Temporary Stop Bar	W End Stage II Detour				24.0			
12	235+40		Temporary Stop Bar	E End Stage II Detour				24.0			
1	228+90	234+80	Blackout Perm White Line 4"	Blackout Tape Removal				196.7			
2	228+90	234+80	Blackout Perm White Line 4"	Blackout Tape Removal				196.7			
7	228+90	234+80	Temp Line Blackout 4"	Rt Stage I Detour Edgeline				196.7			
8	228+90	234+80	Temp Line Blackout 4"	Lt Stage I Detour Edgeline				196.7			
13	228+90	234+80	Temporary Line White	Rt Stage II Detour Edgeline				196.7			
14	228+90	234+80	Temporary Line White	Lt Stage II Detour Edgeline				196.7			
15	228+90	234+80	Permanent Skip Dash Yellow	Centerline					147.5		
16	228+90	234+80	Permanent Solid Line White	Right Edgeline				196.7		590	
17	228+90	234+80	Permanent Solid Line White	Left Edgeline				196.7		590	
TOTAL					2360	2360	24	1621.3	147.5	1180	

OFFSET SCHEDULE FOR TEMPORARY TAPE, PAVEMENT MARKING AND TEMPORARY CONCRETE BARRIER

Line	STATION		Description	Location	Begin Point		Breakpoint 1		Breakpoint 2		End Point	
	From	To			Station	Offset	Station	Offset	Station	Offset	Station	Offset
	Stage I											
3	228+90	234+80	Temporary Line White	Rt Stage I Detour Edgeline	228+90~230+05	12.0' rt	230+75	15.9' rt	232+95	15.9' rt	233+65~234+80	12.0' rt
4	228+90	234+80	Temporary Line White	Lt Stage I Detour Edgeline	228+90	12.0' lt	230+75	3.9' rt	232+95	3.9' rt	234+80	12.0' lt
	230+40	233+30	Temp Concrete Barrier	Stage I Detour	230+40	4.9' lt	231+25	2.9' rt	232+70	2.9' rt	233+30	4.9' lt
Stage II												
9	228+90	234+80	Temporary Line White	Rt Stage II Detour Edgeline	228+90	12.0' rt	230+75	3.9' lt	232+95	3.9' lt	234+80	12.0' rt
10	230+05	233+75	Temporary Line White	Lt Stage II Detour Edgeline	228+90~230+05	12.0' lt	230+75	15.9' lt	232+95	15.9' lt	233+65~234+80	12.0' lt
	230+40	233+30	Temp Concrete Barrier	Stage II Detour	230+40	4.9' rt	231+25	2.9' lt	232+70	2.9' lt	233+30	4.9' rt
Post Stage												
15	230+05	233+75	Permanent Skip Dash Yellow	Centerline	228+90	0.0'					234+80	0.0'
16	230+05	233+65	Permanent Solid Line White	Right Edgeline	228+90	12.0' rt					234+80	12.0' rt
17	230+05	233+65	Permanent Solid Line White	Left Edgeline	228+90	12.0' rt					234+80	12.0' rt

MODEL: D:\p1\h... FILE NAME: E:\projects\mrc\renewal\2001\1\CAD\Project\HAMILTON\11-AschFinal-Stripes.dwg

HAMILTON CONSULTING ENGINEERS, INC.
3230 Executive Drive, Joliet, Illinois 60431
Ph: (815) 730-3444 Fax: (815) 730-6703
LICENSE NO. 184-00205
© 2020 HAMILTON CONSULTING ENGINEERS, INC.

USER NAME = dws	DESIGNED -	REVISED -
PLOT SCALE = 40,0000 * / in.	DRAWN -	REVISED -
PLOT DATE = 2/9/2021	CHECKED -	REVISED -
	DATE - 01-11-2021	REVISED -

STATE OF ILLINOIS DEPARTMENT OF TRANSPORTATION

US 30 at ELKHORN CREEK OVERFLOW PERMANENT STRIPING PLAN

SCALE: SHEET OF SHEETS STA. TO STA.

F.A.S. RTE. 1197	SECTION (110BR-2)BJR	COUNTY WHITESIDE	TOTAL SHEETS 9	SHEET NO. 9
CONTRACT NO. 64P65			ILLINOIS FED. AID PROJECT	

GENERAL NOTES

All structural steel shall conform to AASHTO Classification M-270 Gr. 36, unless otherwise noted.

Plan dimensions and details relative to existing plans are subject to nominal construction variations. The Contractor shall field verify existing dimensions and details affecting new construction and make necessary approved adjustments prior to construction or ordering of materials. Such variations shall not be cause for additional compensation for a change in scope of the work, however, the Contractor will be paid for the quantity actually furnished at the unit price bid for the work.

Prior to pouring the new concrete deck, all heavy or loose rust, loose mill scale, and other loose or potentially detrimental foreign material shall be removed from the surfaces in contact with concrete. Tightly adhered paint may remain unless otherwise noted. Removal shall be accomplished by methods that will not damage the steel and the cost will be included in the pay item covering removal of the existing concrete.

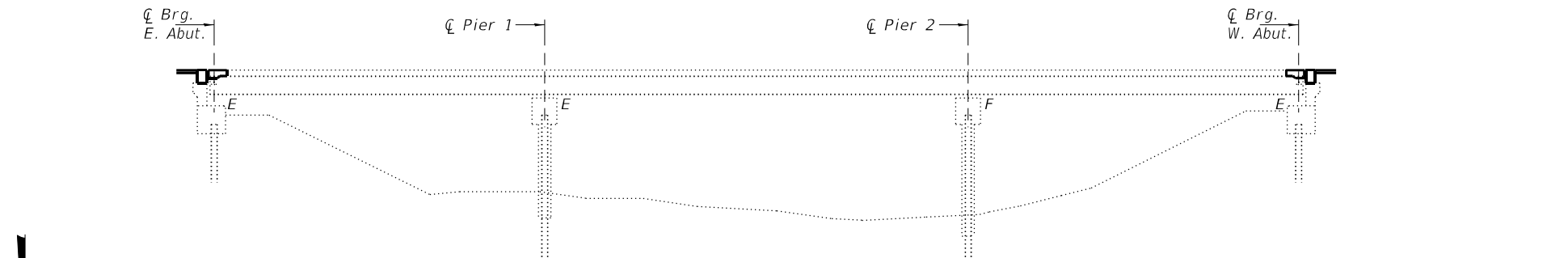
Reinforcement bars designated (E) shall be epoxy coated.

Existing reinforcement bars extending into the removal area shall be cleaned, straightened and incorporated into the new construction. Any reinforcement bars that are damaged during concrete removal shall be replaced with an approved bar splicer or anchorage system. Cost included with Concrete Removal.

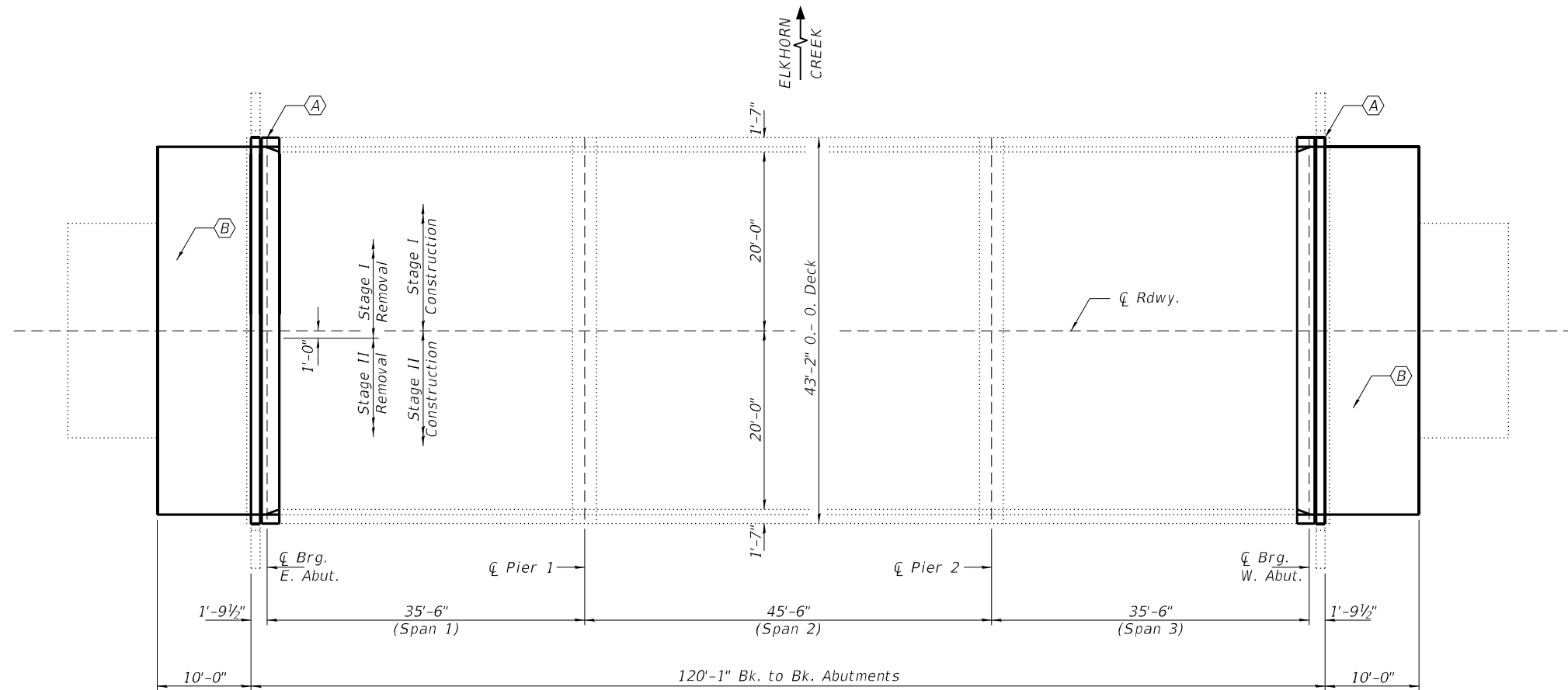
Joint openings shall be adjusted according to Article 520.04 of the Standard Specifications when the deck is poured at an ambient temperature other than 50° F.

Traffic will be maintained using stage construction.

The deck surface shall have its final finish tined according to Article 420.09(e)(1) of the Standard Specifications. Cost included with Concrete Superstructure.



ELEVATION



PLAN

(A) - Remove and replace expansion joints with new Preformed Joint Strip Seals at abutments.

(B) - Removal and replacement of HMA Surface



EXPIRES 11-30-2022

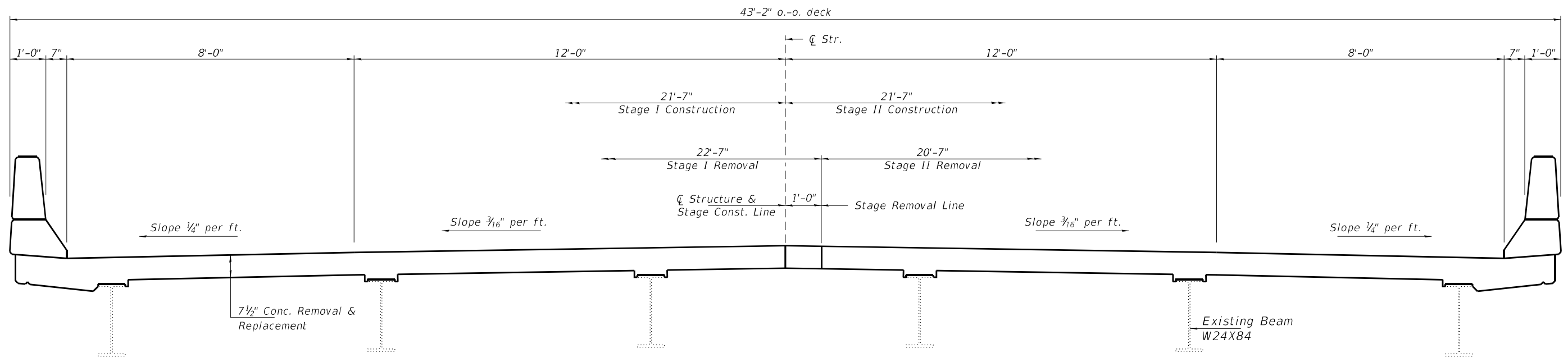
BILL OF MATERIAL

ITEM	UNIT	QUANTITY
Concrete Removal	Cu. Yd.	11.6
Concrete Superstructure	Cu. Yd.	11.6
Preformed Joint Strip Seal	Foot	85
Reinforcement Bars, Epoxy Coated	Pound	1450
Bar Splicers	Each	24
* Protective Coat	Sq. Yd.	34.5
HMA Surface Removal 1 1/2"	Sq. Yd.	91.5
HMA Surface Course, IL-9.5 FG, Mix "C", N70	Tons	7.7
** Deck Slab Repair (Partial Depth)	Sq. Yd.	10

* Apply to new concrete only.

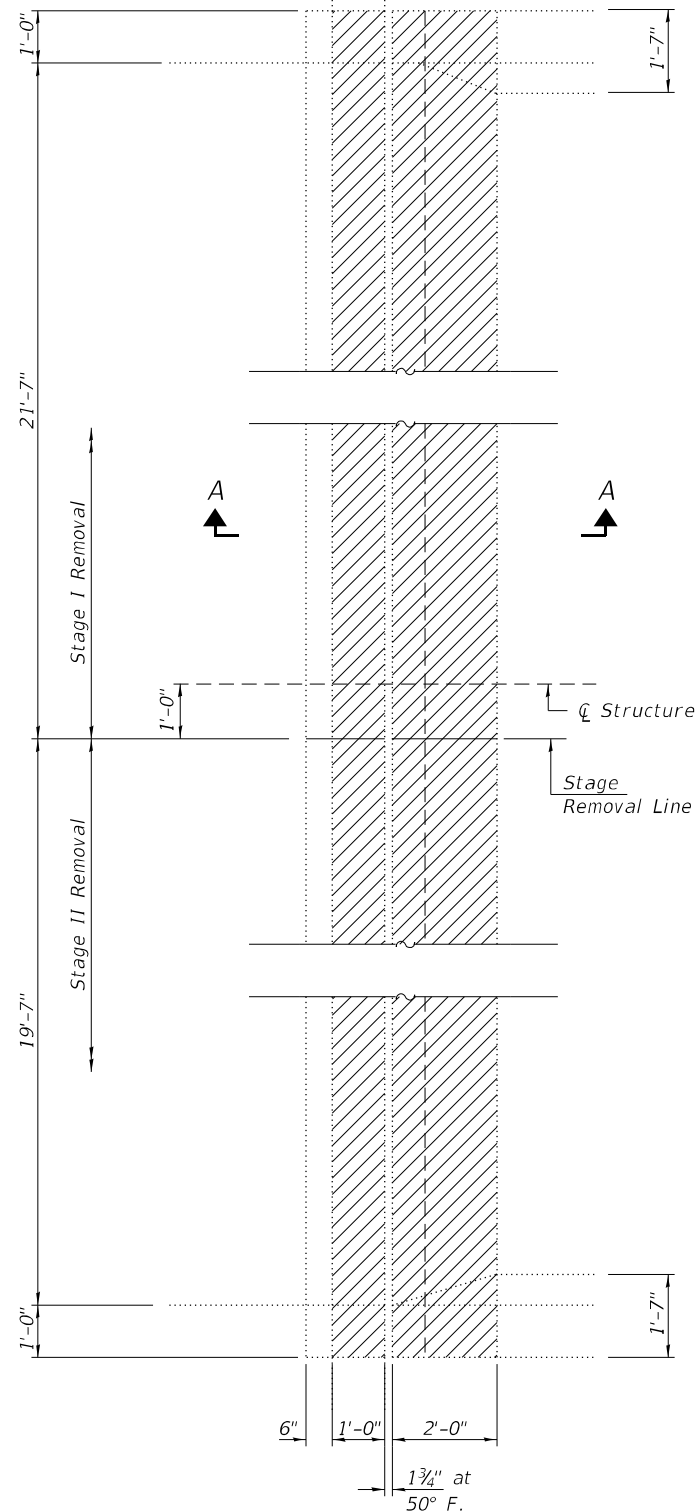
** Estimated quantity. Size and location of patches to be determined in the field by the Engineer,

DESIGNED - Victor H. Veliz	EXAMINED - <i>Tony A. Beck</i> ENGINEER OF STRUCTURAL SERVICES	DATE - MARCH 09, 2021	STATE OF ILLINOIS DEPARTMENT OF TRANSPORTATION	GENERAL PLAN AND ELEVATION US RT 30 OVER ELKHORN CREEK SN 098 - 0032		F.A.S. RTE.	SECTION	COUNTY	TOTAL SHEETS	SHEET NO.
CHECKED - Adrian T. Halloway	PASSED - <i>Sh. Carl Payne</i> ENGINEER OF BRIDGES AND STRUCTURES	REVISED -		(110BR-2)BJR	WHITESIDE	16	10			
DRAWN - Venkat Reddy	REVISED -	CONTRACT NO. 64P65		ILLINOIS	FED. AID PROJECT					
CHECKED - VHV ATH										



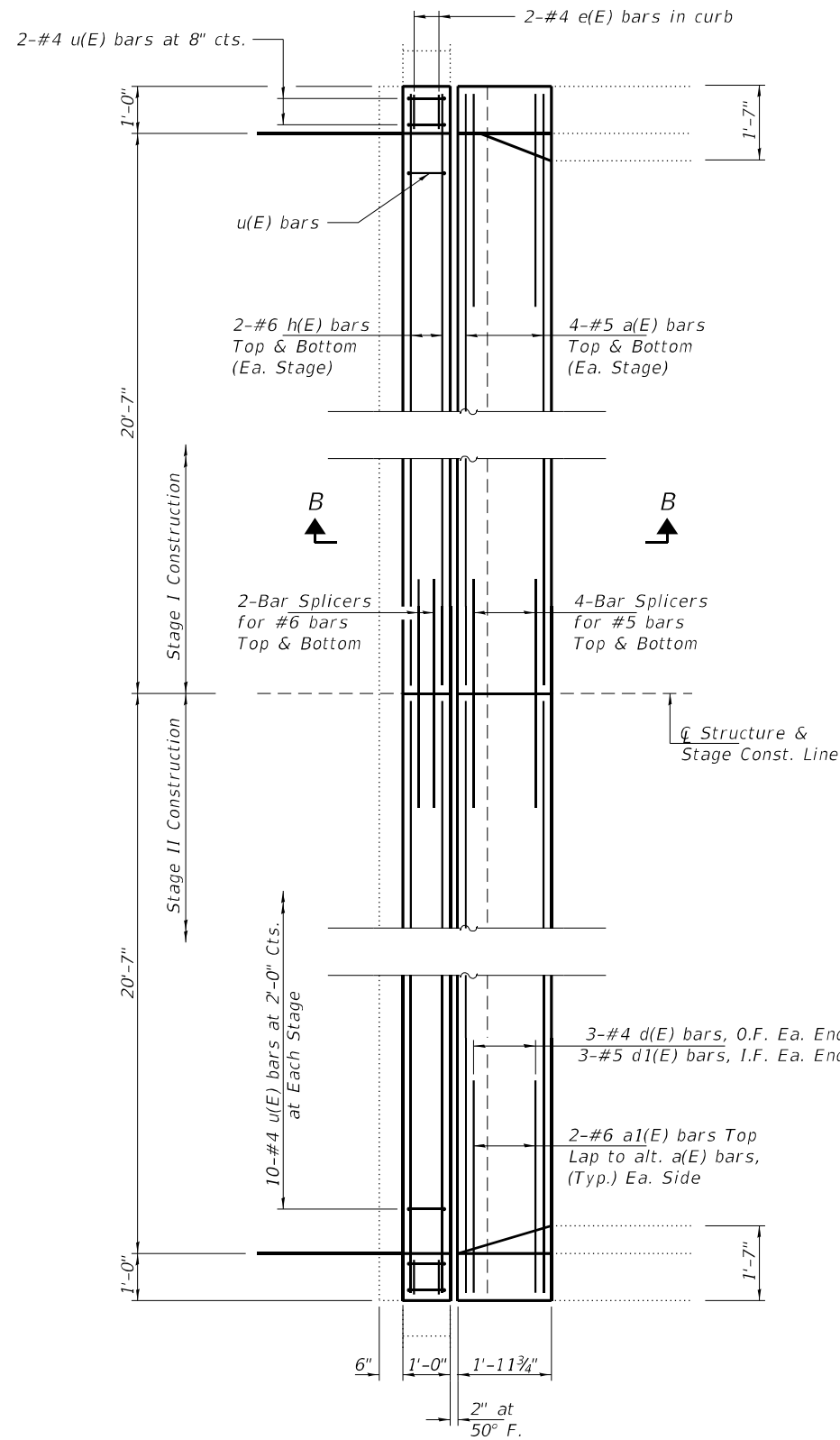
CROSS SECTION NEAR ABUTMENTS
(Looking West)

DESIGNED - VHV	EXAMINED	DATE - MARCH 09, 2021	STATE OF ILLINOIS DEPARTMENT OF TRANSPORTATION	CROSS SECTION & STAGE CONSTRUCTION DETAILS SN 098 - 0032	F.A.S. RTE.	SECTION	COUNTY	TOTAL SHEETS	SHEET NO.	
CHECKED - ATH	<i>Timothy A. Daulton</i> ENGINEER OF STRUCTURAL SERVICES	REVISED -			1197	(110BR-2)BJR	WHITESIDE	16	11	
DRAWN - Venkat Reddy	<i>Carl Ringer</i> ENGINEER OF BRIDGES AND STRUCTURES	REVISED -			CONTRACT NO. 64P65					
CHECKED - VHV ATH					SHEET NO. 2 OF 6 SHEETS					
				ILLINOIS FED. AID PROJECT						



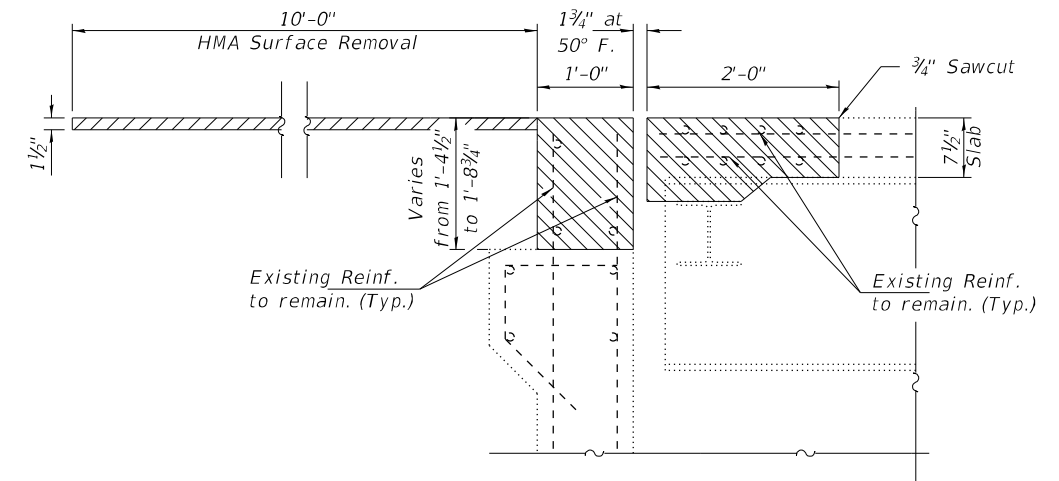
REMOVAL PLAN

E. Abut of looking West
W. Abut looking East

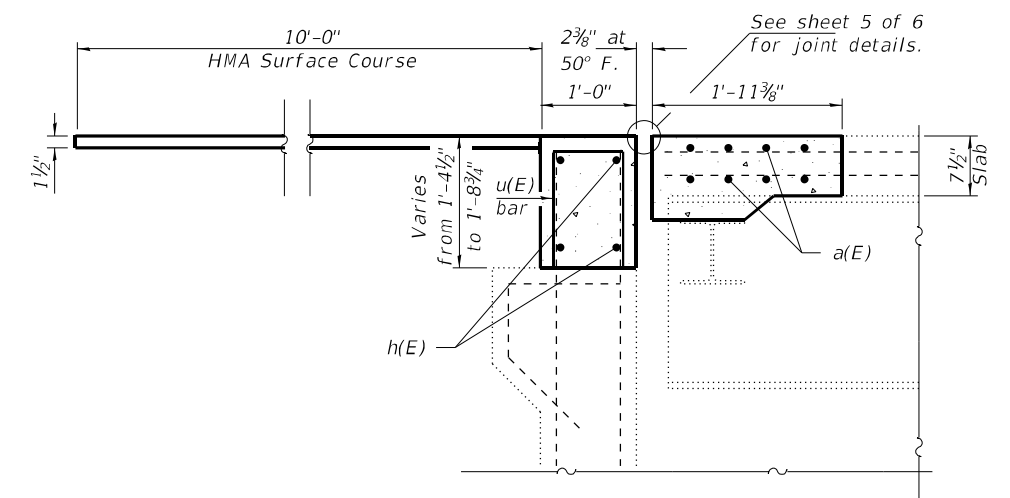


REPLACEMENT PLAN

E. Abut of looking West
W. Abut looking East

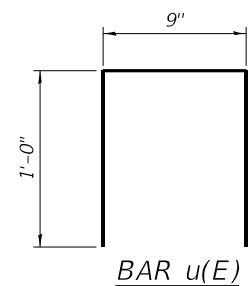


SECTION A-A

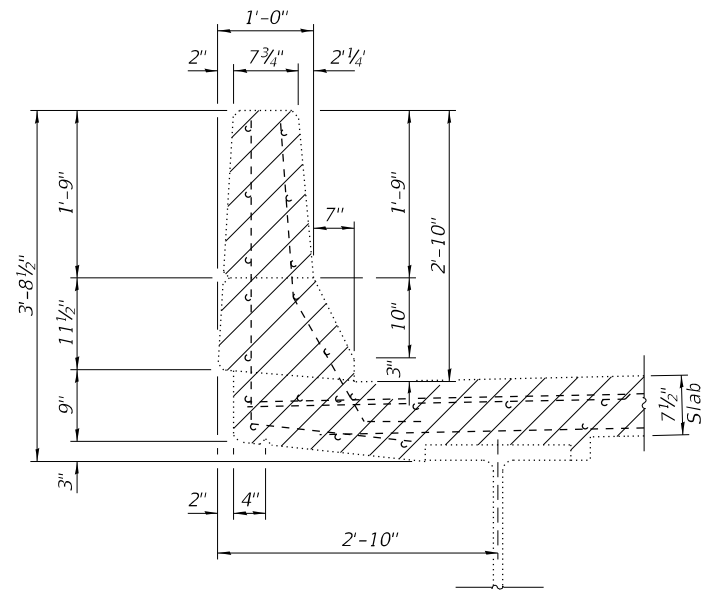


SECTION B-B

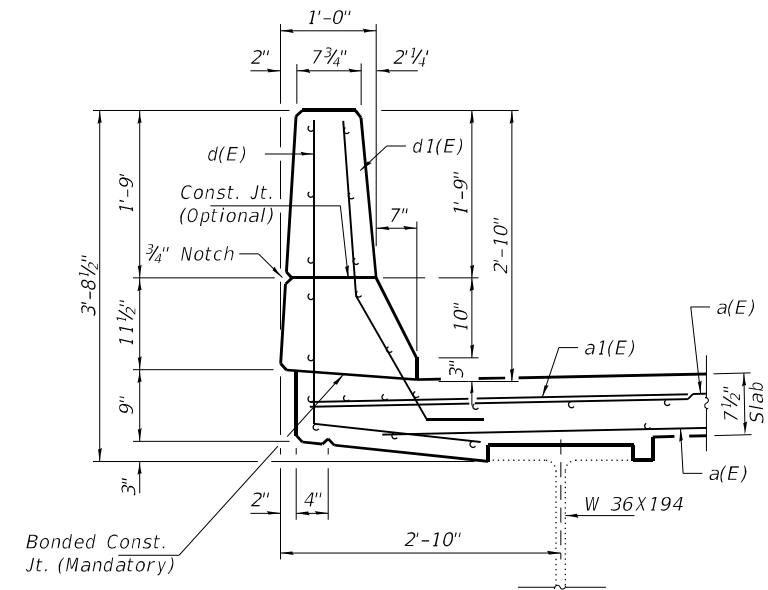
Note:
See sheet 4 of 6 for Section Thru Bridge Parapet,
Bill of Material and reinforcement bending diagrams.
Hatched areas indicate Concrete Removal.



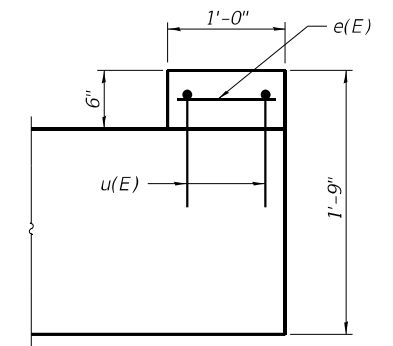
DESIGNED - VHV	EXAMINED - <i>Timothy A. ...</i>	DATE - MARCH 09, 2021	STATE OF ILLINOIS DEPARTMENT OF TRANSPORTATION	JOINT REPLACEMENT DETAILS SN 098 - 0032	F.A.S. RTE.	SECTION	COUNTY	TOTAL SHEETS	SHEET NO.
CHECKED - ATH	PASSED - <i>Carl ...</i>	REVISIONS			1197	(110BR-2)BJR	WHITESIDE	16	12
DRAWN - Venkat Reddy					CONTRACT NO. 64P65				
CHECKED - VHV ATH				SHEET NO. 3 OF 6 SHEETS	ILLINOIS FED. AID PROJECT				



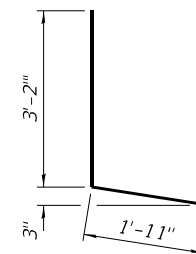
SECTION THRU BRIDGE PARAPET



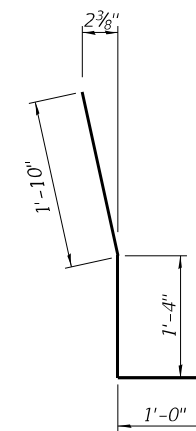
SECTION THRU BRIDGE PARAPET



SECTION AT ABUTMENT/CURB



BAR d(E)



BAR d1(E)

BILL OF MATERIAL
(TWO ABUTMENTS)

Bar	No.	Size	Length	Shape
a(E)	32	#5	21'-3"	—
a1(E)	8	#6	4'-0"	—
d(E)	12	#4	5'-1"	L
d1(E)	12	#5	4'-2"	L
e(E)	8	#4	0'-9"	—
h(E)	16	#6	21'-3"	—
u(E)	48	#4	2'-9"	U
Concrete Removal			Cu. Yd.	11.6
Concrete Superstructure			Cu. Yd.	11.6
Bar Splicers			Each	24
Reinforcement Bars, Epoxy Coated			Pound	1450

DESIGNED - VHV
CHECKED - ATH
DRAWN - Venkat Reddy
CHECKED - VHV ATH

EXAMINED
PASSED
ENGINEER OF STRUCTURAL SERVICES
ENGINEER OF BRIDGES AND STRUCTURES

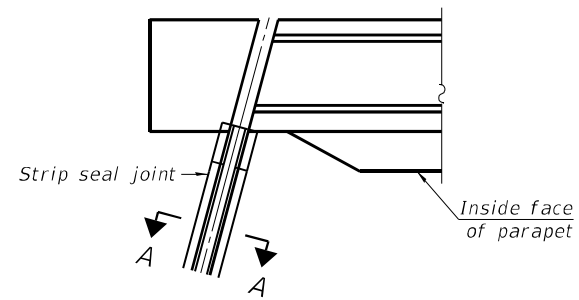
DATE - MARCH 09, 2021
REVISED -
REVISED -

STATE OF ILLINOIS
DEPARTMENT OF TRANSPORTATION

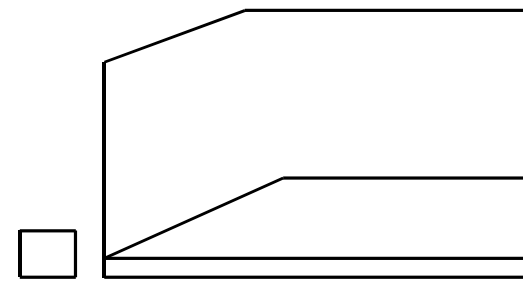
STAGE CONSTRUCTION DETAILS
SN 098 - 0032

SHEET NO. 4 OF 6 SHEETS

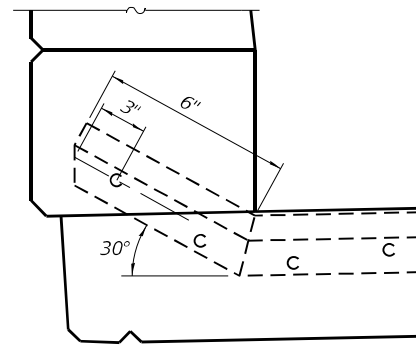
F.A.S. RTE.	SECTION	COUNTY	TOTAL SHEETS	SHEET NO.
1197	(110BR-2)BJR	WHITESIDE	16	13
			CONTRACT NO. 64P65	
		ILLINOIS	FED. AID PROJECT	



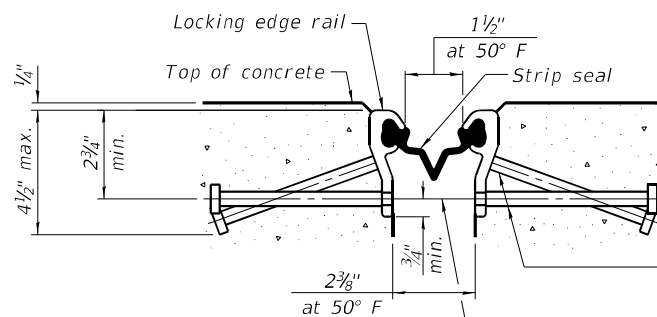
FOR SKEWS $\leq 30^\circ$
PLAN AT PARAPET



ELEVATION AT PARAPET

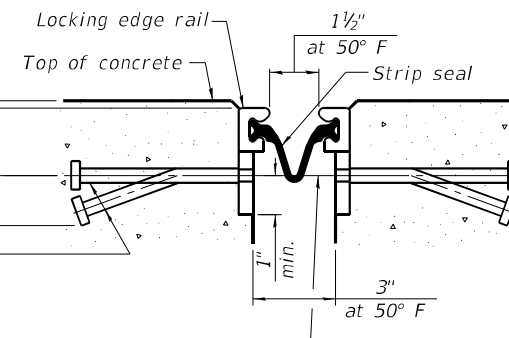


ELEVATION AT PARAPET
 (Skews $\leq 30^\circ$)



SHOWING ROLLED RAIL JOINT

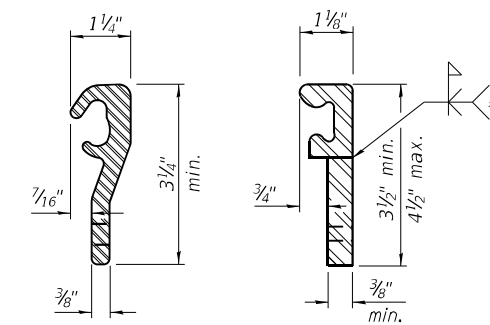
* $\frac{5}{8}$ " ϕ x 6" studs @ 6" cts. (alternate angled/bent studs with horizontal studs)
 $\frac{3}{8}$ " ϕ threaded rods in $\frac{1}{16}$ " ϕ holes at ± 4 "-0" cts. for holding the proper joint opening based on the temperature during the deck pour. Place to miss studs. All rods shall be burned, or sawed off flush with the plates after concrete is set.



SHOWING WELDED RAIL JOINT

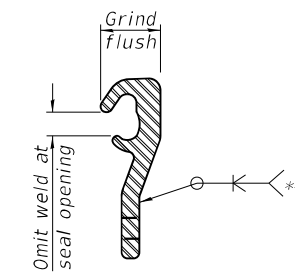
SECTION A-A

* Granular or solid flux filled headed studs conforming to Article 1006.32 of the Std. Specs., automatically end welded.



LOCKING EDGE RAILS

** Back gouge not required if complete joint penetration is verified by mock-up.



LOCKING EDGE RAIL SPLICE

The inside of the locking edge rail groove shall be free of weld residue. Rolled rail shown, welded rail similar.

BILL OF MATERIAL

Item	Unit	Total
Preformed Joint Strip Seal	Foot	85

EJ-SS1 LT30/REPS

2-25-20

DESIGNED - VHV
 CHECKED - ATH
 DRAWN - Venkat Reddy
 CHECKED - VHV ATH

EXAMINED
 PASSED
 Timothy A. [Signature]
 ENGINEER OF STRUCTURAL SERVICES
 Carl [Signature]
 ENGINEER OF BRIDGES AND STRUCTURES

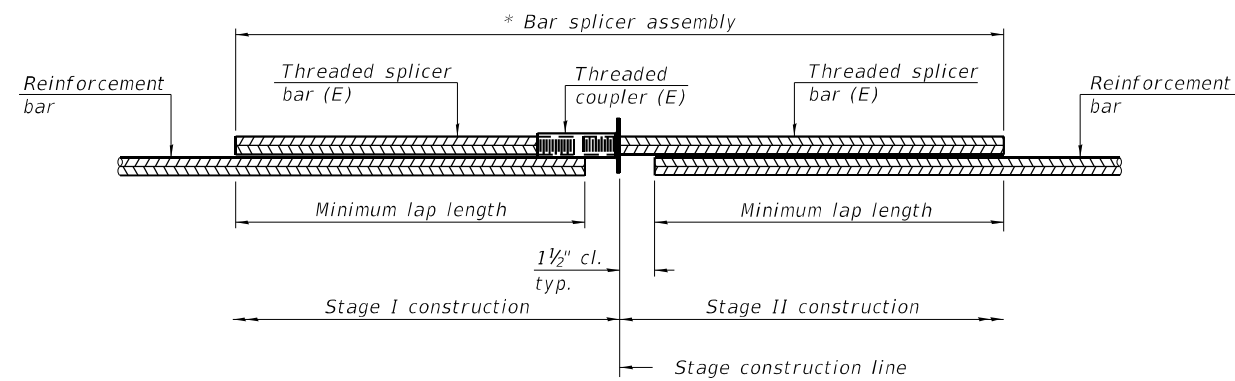
DATE - MARCH 09, 2021
 REVISED -
 REVISED -

STATE OF ILLINOIS
 DEPARTMENT OF TRANSPORTATION

PREFORMED JOINT STRIP SEAL
 SN 098 - 0032

SHEET NO. 5 OF 6 SHEETS

F.A.S. RTE.	SECTION	COUNTY	TOTAL SHEETS	SHEET NO.
1197	(110BR-2)BJR	WHITESIDE	16	14
CONTRACT NO. 64P65			ILLINOIS FED. AID PROJECT	

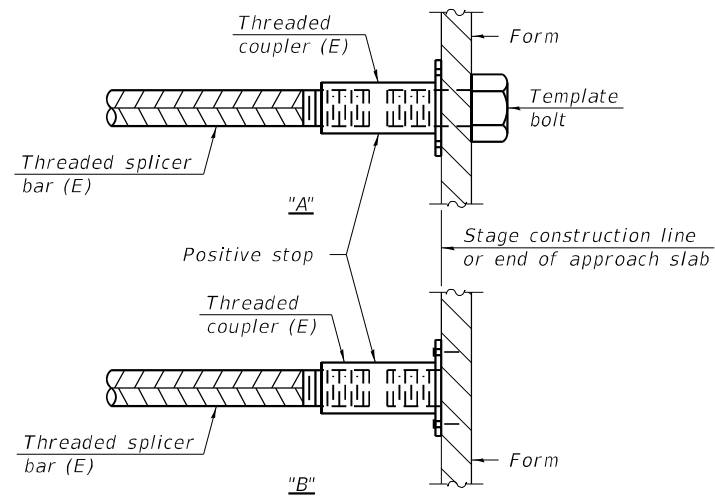


STANDARD BAR SPLICER ASSEMBLY PLAN
 (All components shall be provided from one supplier)

Threaded splicer bar length = min. lap length + 1 1/2" + thread length

* Epoxy not required on Bar Splicer Assembly components used in conjunction with black bars.

Location	Bar size	No. assemblies required	Minimum lap length
Deck	#5	16	3'-6"
Abutment	#6	8	4'-0"

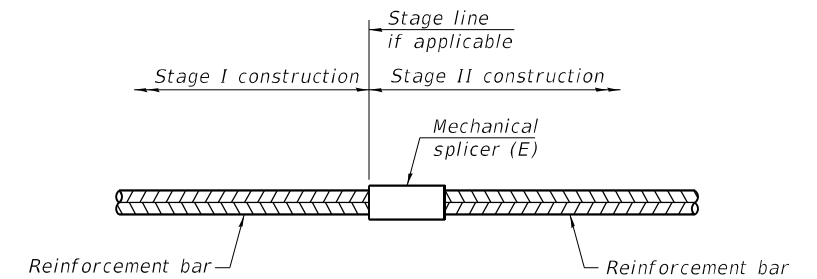


INSTALLATION AND SETTING METHODS

"A" : Set bar splicer assembly by means of a template bolt.

"B" : Set bar splicer assembly by nailing to wood forms or cementing to steel forms.

(E) : Indicates epoxy coating.



STANDARD MECHANICAL SPLICER

Location	Bar size	No. assemblies required

Notes:

Splicer bars shall be deformed with threaded ends and have a minimum 60 ksi yield strength.

All reinforcement shall be lapped and tied to the splicer bars.

Bar splicer assemblies shall be epoxy coated according to the requirements for reinforcement bars. See Section 508 of the Standard Specifications.

See approved list of bar splicer assemblies and mechanical splicers for alternatives.

BSD-1

1-1-2020

DESIGNED - VHV
 CHECKED - ATH
 DRAWN - Venkat Reddy
 CHECKED - VHV ATH

EXAMINED
 PASSED
 ENGINEER OF STRUCTURAL SERVICES
 ENGINEER OF BRIDGES AND STRUCTURES

DATE - MARCH 09, 2021
 REVISED -
 REVISED -

STATE OF ILLINOIS
 DEPARTMENT OF TRANSPORTATION

BAR SPLICER ASSEMBLY AND MECHANICAL SPLICER DETAILS
 SN 098 - 0032

SHEET NO. 6 OF 6 SHEETS

F.A.S. RTE.	SECTION	COUNTY	TOTAL SHEETS	SHEET NO.
1197	(110BR-2)BJR	WHITESIDE	16	15
CONTRACT NO. 64P65				

ILLINOIS FED. AID PROJECT