

SUMMARY OF QUANTITIES

0047  
100% STATE

CODE NO.	ITEM	UNIT	TOTAL QUANTITY
42001300	PROTECTIVE COAT	SQ YD	70
50102400	CONCRETE REMOVAL	CU YD	15.3
50300255	CONCRETE SUPERSTRUCTURE	CU YD	15.3
50301350	CONCRETE SUPERSTRUCTURE APPROACH SLAB	CU YD	18.9
50800205	REINFORCEMENT BARS, EPOXY COATED	POUND	5880
<del>50800515</del>	BAR SPLICERS	EACH	16
52000110	PREFORMED JOINT STRIP SEAL	FOOT	84
67100100	MOBILIZATION	L SUM	1
70100405	TRAFFIC CONTROL AND PROTECTION, STANDARD 701321	EACH	1
70100450	TRAFFIC CONTROL AND PROTECTION, STANDARD 701201	L SUM	1
70102620	TRAFFIC CONTROL AND PROTECTION, STANDARD 701501	L SUM	1
70102640	TRAFFIC CONTROL AND PROTECTION, STANDARD 701801	L SUM	1
70106500	TEMPORARY BRIDGE TRAFFIC SIGNAL INSTALLATION	EACH	1
7010704	PAVEMENT MARKING BLACKOUT TAPE, 4"	FOOT	3,049
70300904	PAVEMENT MARKING TAPE, TYPE IV, 4"	FOOT	2,675

0047  
100% STATE

CODE NO.	ITEM	UNIT	TOTAL QUANTITY
70300924	PAVEMENT MARKING TAPE TYPE IV, 24"	FOOT	24
70400100	TEMPORARY CONCRETE BARRIER	FOOT	338
70400200	RELOCATE TEMPORARY CONCRETE BARRIER	FOOT	338
70600251	IMPACT ATTENUATORS, TEMPORARY (NON-REDIRECTIVE, NARROW), TEST LEVEL 3	EACH	2
70600352	IMPACT ATTENUATORS, RELOCATE (NON-REDIRECTIVE, NARROW), TEST LEVEL 3	EACH	2
* 78001110	PAINT PAVEMENT MARKING LINE 4"	FOOT	1,759
X7030005	TEMPORARY PAVEMENT MARKING REMOVAL	SQ FT	1,526
Z0004552	APPROACH SLAB REMOVAL	CU YD	43.3
<del>31101000</del>	<del>SUBBASE GRANULAR MATERIAL, TYPE B</del>	<del>TON</del>	<del>20</del>
35101400	AGGREGATE BASE COURSE, TYPE B	TON	20

\*= SPECIALTY ITEM

MODEL: D:\hail\...  
FILE NAME: C:\Users\scottw\Desktop\WO\_1\_008-004-1 - Savannah\Submittals\2-21\02011-1B-shlt-SOO.dgn

**HAMILTON CONSULTING ENGINEERS, INC.**  
3230 Executive Drive, Joliet, Illinois 60431  
Ph: (815) 730-3444 Fax: (815) 730-6703  
LICENSE NO. 184-00200  
© 2020 HAMILTON CONSULTING ENGINEERS, INC.

USER NAME = scottw	DESIGNED - MGB	REVISED -
PLOT SCALE = 2.0000" / in.	DRAWN - DWS	REVISED -
PLOT DATE = 02/15/2021	CHECKED -	REVISED -
	DATE - 01-11-2021	REVISED -

**STATE OF ILLINOIS  
DEPARTMENT OF TRANSPORTATION**

**IL 84, SAVANNA, IL  
SCHEDULE OF QUANTITIES**

SCALE: NONE SHEET 3 OF 10 SHEETS STA. TO STA.

F.A.P. RTE. 308	SECTION (105VB-3)BJR	COUNTY	TOTAL SHEETS 17	SHEET NO. 3
CONTRACT NO. 64P66			ILLINOIS FED. AID PROJECT	

REV. 3/30/21 REV. 3/17/21 REV. 3/4/21 REV. 3/2/21

**GENERAL NOTES**

All structural steel shall conform to AASHTO Classification M-270 Gr. 36, unless otherwise noted.

Plan dimensions and details relative to existing plans are subject to nominal construction variations. The Contractor shall field verify existing dimensions and details affecting new construction and make necessary approved adjustments prior to construction or ordering of materials. Such variations shall not be cause for additional compensation for a change in scope of the work, however, the Contractor will be paid for the quantity actually furnished at the unit price bid for the work.

Prior to pouring the new concrete deck, all heavy or loose rust, loose mill scale, and other loose or potentially detrimental foreign material shall be removed from the surfaces in contact with concrete. Tightly adhered paint may remain unless otherwise noted. Removal shall be accomplished by methods that will not damage the steel and the cost will be included in the pay item covering removal of the existing concrete.

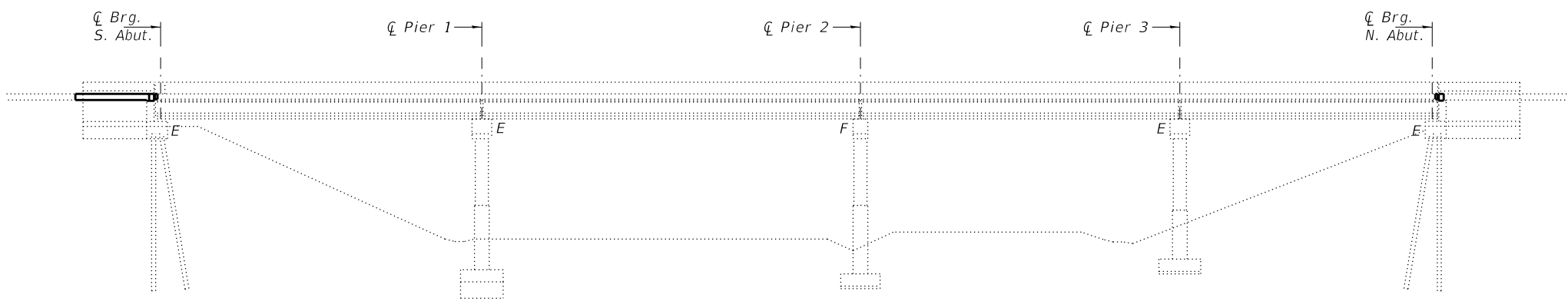
Reinforcement bars designated (E) shall be epoxy coated.

Existing reinforcement bars extending into the removal area shall be cleaned, straightened and incorporated into the new construction. Any reinforcement bars that are damaged during concrete removal shall be replaced with an approved bar splicer or anchorage system. Cost included with Concrete Removal.

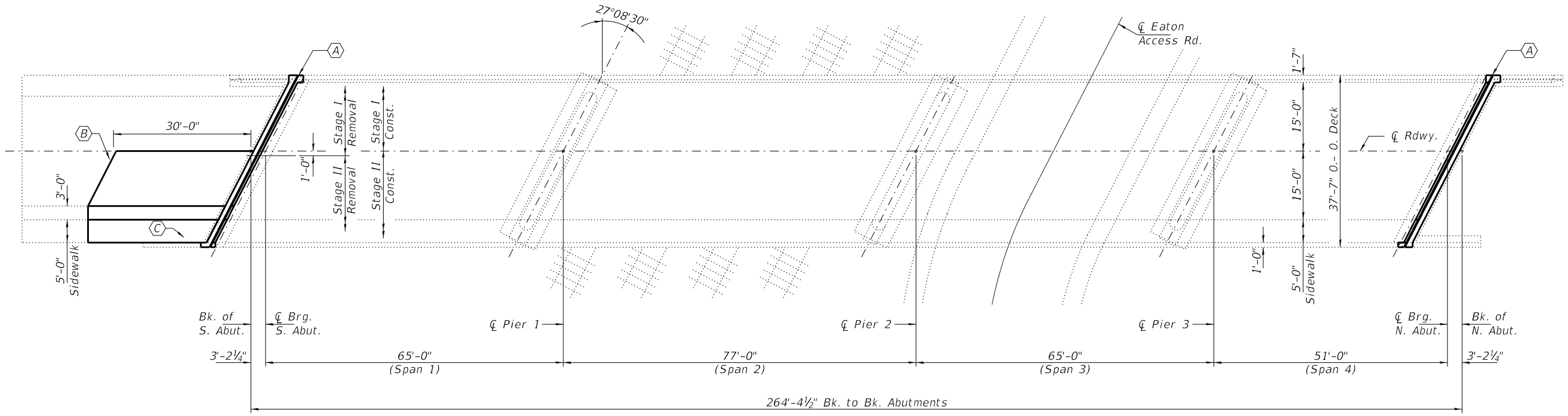
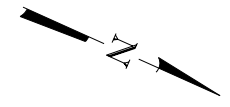
Joint openings shall be adjusted according to Article 520.04 of the Standard Specifications when the deck is poured at an ambient temperature other than 50° F.

Traffic will be maintained using stage construction.

The contractor shall use extreme care during concrete removal so as not to damage the PPC I-beams.



**ELEVATION**



**PLAN**

- (A) - Remove and replace expansion joints with new Preformed Joint Strip Seals at abutments.
- (B) - Remove and replace Approach Slab (removal to be done under Stage II Removal).
- (C) - Remove and replace Approach Pavement Shoulder and Sidewalk Section (for picture of damage see sheet 7 of 12).

**BILL OF MATERIAL**

ITEM	UNIT	QUANTITY
Concrete Removal	Cu. Yd.	15.3
Concrete Superstructure	Cu. Yd.	15.3
Approach Slab Removal	Sq. Yd.	43.3
Concrete Superstructure (Approach Slab)	Cu. Yd.	18.9
Preformed Joint Strip Seal	Foot	84
Reinforcement Bars, Epoxy Coated	Pound	5880
Bar Splicers	Each	16
* Protective Coat	Sq. Yd.	70
* Aggregate Base Course, Type B	Ton	22

\* Apply to new concrete only.



EXPIRES 11-30-2022

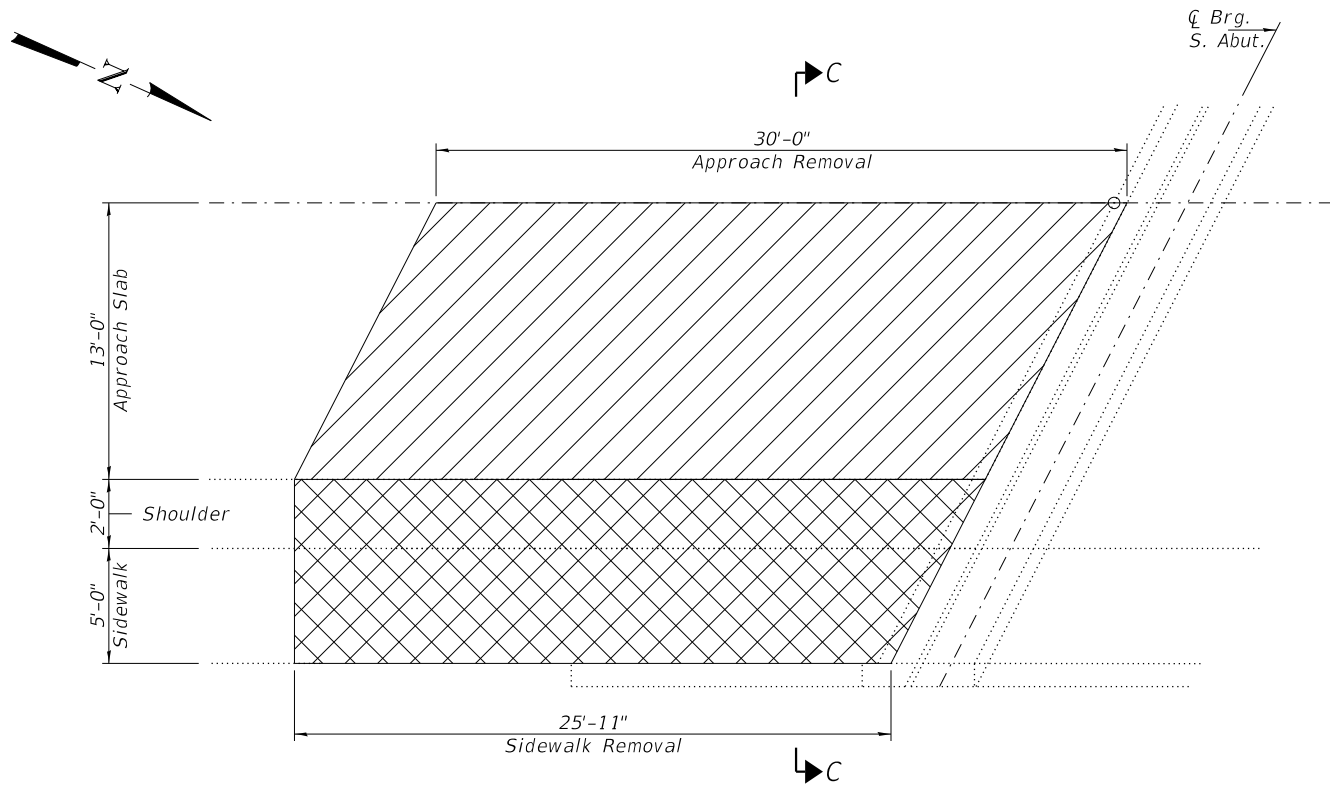
DESIGNED - Victor H. Veliz	EXAMINED - <i>Twig A. Beck</i>	DATE - MARCH 16, 2021
CHECKED - Jeffrey S. Burke	ENGINEER OF STRUCTURAL SERVICES	
DRAWN - Venkat Reddy	PASSED - <i>Dr. Carl Puze</i>	REVISED -03/25/2021 VHV
CHECKED - VHV JSB	ENGINEER OF BRIDGES AND STRUCTURES	REVISED -

**STATE OF ILLINOIS  
DEPARTMENT OF TRANSPORTATION**

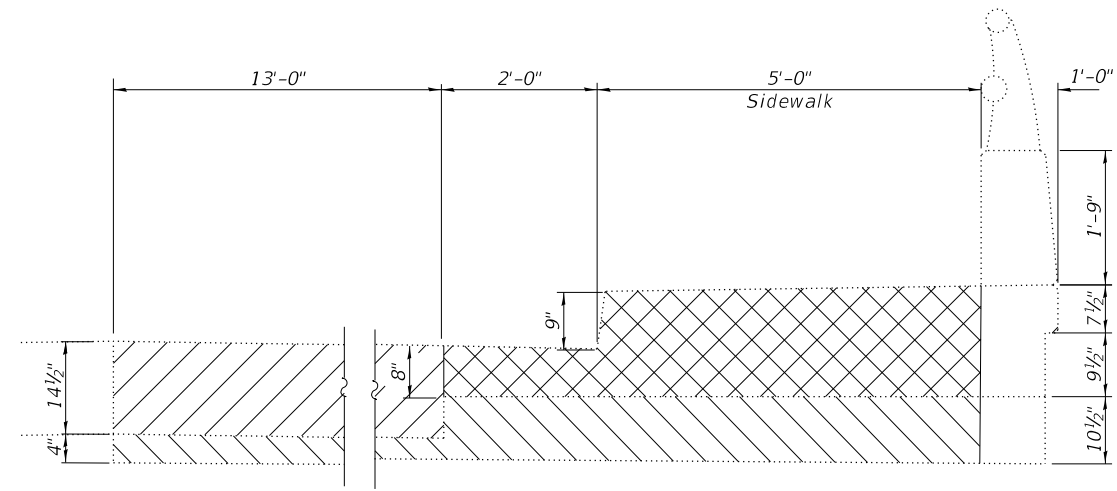
**GENERAL PLAN AND ELEVATION  
IL 84 OVER SOO LINE RR/CITY STREET  
SN 008-0041**

SHEET NO. 1 OF 12 SHEETS

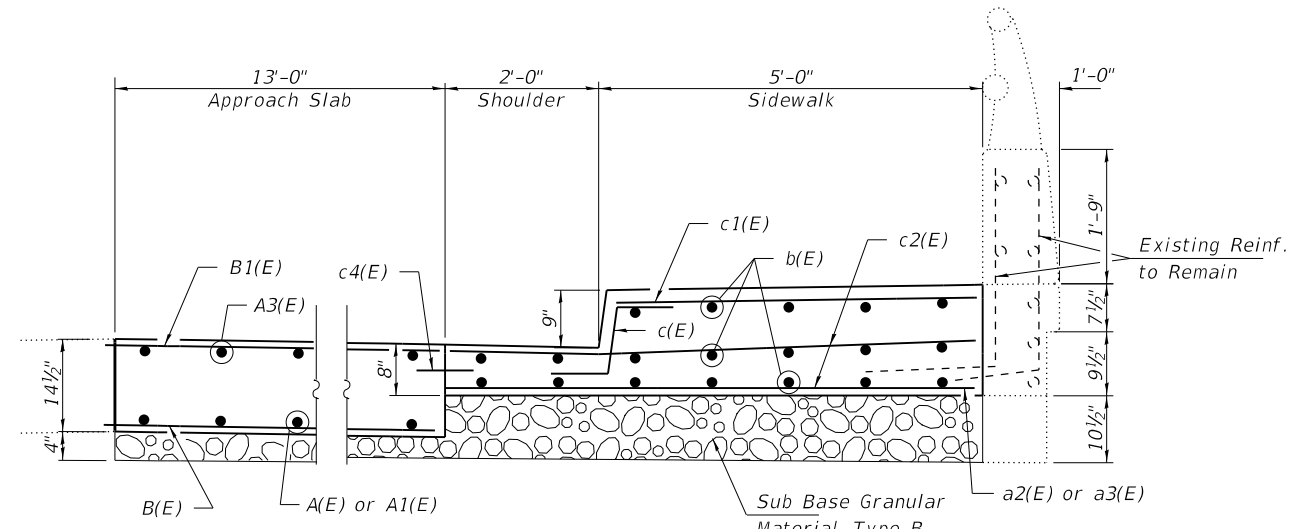
F.A.P. RTE.	SECTION	COUNTY	TOTAL SHEETS	SHEET NO.
18	(105VB-3)BJR	CARROLL	22	11
CONTRACT NO. 64P66				
ILLINOIS FED. AID PROJECT				



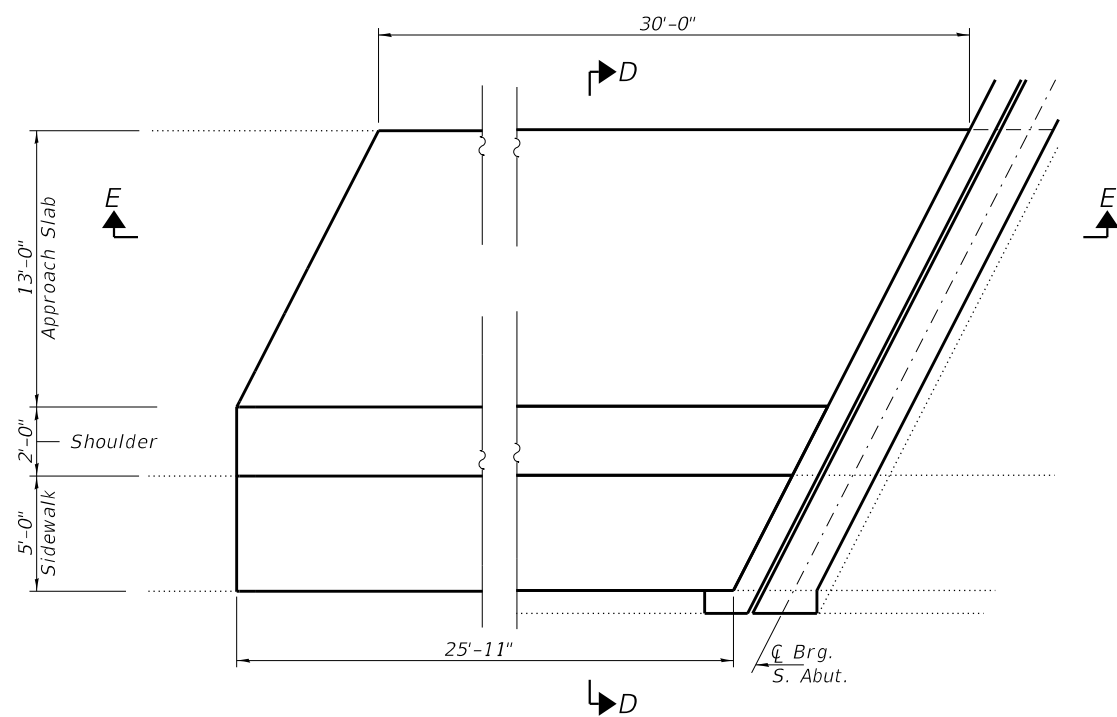
**SIDEWALK APPROACH SHOULDER AND APPROACH SLAB REMOVAL**



**SECTION C-C**



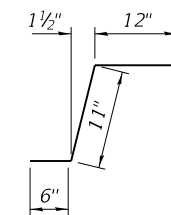
**SECTION D-D**



**SIDEWALK/APPROACH SHOULDER AND APPROACH SLAB REPLACEMENT**

For reinforcement details, see Partial Plan of Approach Slab on Sheet 7 of 12.

For section E-E see sheet 7 of 12



**BAR c(E)**

- Approach Slab Removal
- Sub Base Removal
- Shoulder / Sidewalk Removal

**BILL OF MATERIAL (SOUTH APPROACH)**

Bar	No.	Size	Length	Shape	
A(E)	13	#9	27'-0"		
A1(E)	13	#9	20'-3"		
A2(E)	13	#5	8'-0"		
A3(E)	13	#5	29'-8"		
A4(E)	13	#5	4'-0"		
B(E)	40	#5	14'-5"		
B1(E)	30	#5	14'-4"		
b(E)	19	#5	28'-6"		
c(E)	27	#5	2'-5"		
c1(E)	28	#5	4'-8"		
c2(E)	28	#5	6'-8"		
c3(E)	12	#5	3'-0"		
c4(E)	30	#5	4'-0"		
* Concrete Removal				Cu. Yd.	8.3
* Concrete Superstructure				Cu. Yd.	8.3
Approach Slab Removal				Sq. Yd.	43.3
Concrete Superstructure (Approach Slab)				Cu. Yd.	18.9
Aggregate Base Course, Type B				Tons	22
Reinforcement Bars, Epoxy Coated				Pound	4830

\* Includes Sidewalk and Shoulder

DESIGNED - VHV  
 CHECKED - JSB  
 DRAWN - Venkat Reddy  
 CHECKED - VHV JSB

EXAMINED  
 PASSED  
 ENGINEER OF BRIDGES AND STRUCTURES

DATE - MARCH 16, 2021  
 REVISED - 03/25/2021 VHV  
 REVISED -

STATE OF ILLINOIS  
 DEPARTMENT OF TRANSPORTATION

SHOULDER & SIDEWALK REMOVAL & REPLACEMENT DETAILS  
 SN 008-0041

SHEET NO. 6 OF 12 SHEETS

F.A.P. RTE. 18  
 SECTION (105VB-3)BJR  
 COUNTY CARROLL  
 TOTAL SHEETS 22  
 SHEET NO. 16  
 CONTRACT NO. 64P66  
 ILLINOIS FED. AID PROJECT