

STATE OF ILLINOIS  
DEPARTMENT OF TRANSPORTATION

F.A. RTE.	SECTION	COUNTY	TOTAL SHEETS	SHEET NO.
18	(105VB-3)BJR	CARROLL	22	1
		ILLINOIS	CONTRACT NO. 64P66	

FOR INDEX OF SHEETS, SEE SHEET NO. 2

# PROPOSED HIGHWAY PLANS

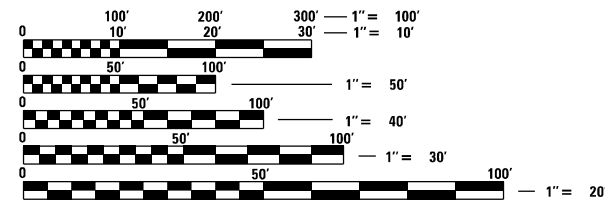
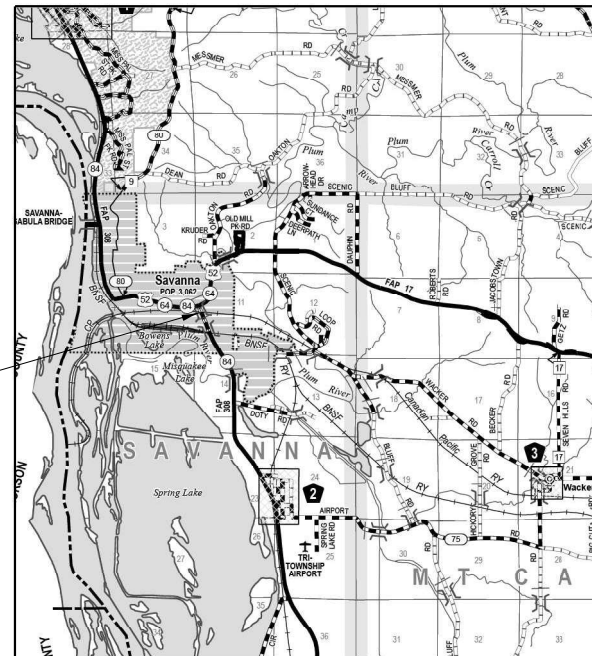
F.A.P. ROUTE 308 (IL 84)  
SECTION (105VB-3)BJR

BRIDGE REPAIRS  
CARROLL COUNTY

C-92-009-21



PROJECT LOCATION



FULL SIZE PLANS HAVE BEEN PREPARED USING STANDARD ENGINEERING SCALES, REDUCED SIZED PLANS WILL NOT CONFORM TO STANDARD SCALES. IN MAKING MEASUREMENTS ON REDUCED PLANS, THE ABOVE SCALES MAY BE USED.

J.U.L.I.E.  
JOINT UTILITY LOCATION INFORMATION FOR EXCAVATORS  
1-800-892-0123  
OR 811

PROJECT ENGINEER SCOTT WYATT, PE, SE  
PROJECT MANAGER MAHMOUD ETEMADI, PE

GROSS LENGTH = 292.38 FT. = 0.053 MILE  
NET LENGTH = 292.38 FT. = 0.053 MILE

CONTRACT NO. 64P66

STATE OF ILLINOIS  
DEPARTMENT OF TRANSPORTATION

SUBMITTED February 17, 2021

*[Signature]*  
REGIONAL ENGINEER

March 19, 2021  
*[Signature]*  
ENGINEER OF DESIGN AND ENVIRONMENT

March 19, 2021  
*[Signature]*  
DIRECTOR OF HIGHWAYS PROJECT IMPLEMENTATION

PRINTED BY THE AUTHORITY  
OF THE STATE OF ILLINOIS

**SHEET INDEX**

1. COVER
2. GENERAL NOTES/ CONSTRUCTION SEQUENCE
3. SUMMARY OF QUANTITIES
4. PAVEMENT MARKING SCHEDULE
5. STAGING TYPICAL SECTION
6. MAINTENANCE OF TRAFFIC PLAN STAGE I
7. MAINTENANCE OF TRAFFIC PLAN STAGE II
8. US 52 MAINTENANCE OF TRAFFIC PLAN
9. TEMPORARY TRAFFIC SIGNAL PLAN
10. PERMANENT STRIPING PLAN
11. GENERAL PLAN AND ELEVATION
12. CROSS SECTION AND STAGE CONSTRUCTION DETAILS
13. S. ABUTMENT JOINT REPLACEMENT DETAILS
14. N. ABUTMENT JOINT REPLACEMENT DETAILS
15. JOINT REPLACEMENT DETAILS
- 16-17. REPAIR-B DETAILS
- 18-20. PREFORMED JOINT STRIP SEAL
21. BAR SPLICER ASSEMBLY AND MECHANICAL SPLICER DETAILS
22. INFORMATIONAL PAGE, EXISTING PLAN SHEET

**STATE STANDARDS**

- |           |  |
|-----------|--|
| 000001-08 | ABBREVIATIONS, SYMBOLS AND PATTERNS                      |
| 701006-05 | OFF-RD OPERATIONS, 2L, 2W, 15' TO 24" FROM PAVEMENT EDGE |
| 701201-05 | LANE CLOSURE, 2L, 2W, DAY ONLY, FOR SPEEDS > 45 MPH      |
| 701301-04 | LANE CLOSURE, 2L, 2W, SHORT TIME OPERATIONS              |
| 701311-03 | LANE CLOSURE, 2L, 2W, MOVING OPERATIONS-DAY ONLY         |
| 701321-18 | LANE CLOSURE, 2L, 2W, BRIDGE REPAIR WITH BARRIER         |
| 701501-06 | URBAN LANE CLOSURE, 2L, 2W, UNDIVIDED                    |
| 701801-06 | SIDEWALK, CORNER OF CROSSWALK CLOSURE                    |
| 701901-08 | TRAFFIC CONTROL DEVICES                                  |
| 704001-08 | TEMPORARY CONCRETE BARRIER                               |
| 782006-01 | GUARDRAIL AND BARRIER WALL REFLECTOR MOUNTING DETAILS    |
| 862001-01 | UNINTERRUPTABLE POWER SUPPLY (UPS)                       |
| 880006-01 | TRAFFIC SIGNAL MOUNTING DETAILS                          |
| 886001-01 | DETECTOR LOOP INSTALLATIONS                              |
| 886006-01 | TYPICAL LAYOUTS FOR DETECTOR LOOPS                       |

**SUGGESTED MAINTENANCE OF TRAFFIC SEQUENCING**

**PRESTAGE**

INSTALL CONSTRUCTION TRAFFIC CONTROL SIGNS AND BARRICADES. LOCATIONS DO NOT CHANGE DURING STAGE I OR II UNLESS OTHERWISE DIRECTED BY THE ENGINEER.

INSTALL BOWEN STREET CLOSURE UPON CITY OF SAVANNA APPROVAL AS DIRECTED BY THE ENGINEER. INSTALLATION LOCATION DOES NOT CHANGE DURING STAGE I OR II UNLESS OTHERWISE DIRECTED BY THE ENGINEER.

INSTALL TEMPORARY TRAFFIC SIGNALS AND DETECTION SYSTEM. ATTACH INTERCONNECT CABLE AND SERVICE DROP TO EXISTING ADJACENT UTILITY POLES. CONTRACTOR TO MAKE REQUIRED PERMITTING AND ARRANGEMENTS WITH IDOT AND UTILITY COMPANIES. LOCATIONS DO NOT CHANGE DURING STAGE I OR II UNLESS OTHERWISE DIRECTED BY THE ENGINEER.

REMOVE EXISTING PAVEMENT MARKINGS TO THE LIMITS SHOWN IN THE PLANS.

**STAGE 1**

INSTALL DRUM TAPERS, TEMPORARY CONCRETE BARRIER, AND IMPACT ATTENUATORS FOR STAGE I ROADWAY DETOUR.

INSTALL TEMPORARY PAVEMENT MARKINGS FOR STAGE I ROADWAY DETOUR.

INSTALL ACCESS RAMPS FOR THE SIDEWALK DETOUR IN ACCORDANCE WITH THE PLAN DETAIL.

INSTALL DETECTABLE PEDESTRIAN CHANNELIZING BARRICADE FOR THE SIDEWALK DETOUR PARALLEL TO, AND OFFSET 4' LEFT FROM THE STAGE I ROADWAY DETOUR TEMPORARY CONCRETE BARRIER.

MOVE DETECTABLE PEDESTRIAN CHANNELIZING BARRICADE TO THE TOP OF THE STRUCTURE CURB AND RELOCATE PEDESTRIAN TRAFFIC BACK TO THE STRUCTURE SIDEWALK ONCE WORK IS COMPLETE IN THE CURB AND SIDEWALK AREA.

**STAGE 2**

REMOVE ALL PEDESTRIAN CHANNELIZING BARRICADES AND ACCESS RAMPS USED FOR THE STAGE I SIDEWALK DETOUR.

REMOVE STAGE 1 ROADWAY DETOUR TEMPORARY PAVEMENT MARKING.

MOVE DRUM TAPERS, TEMPORARY CONCRETE BARRIER, AND IMPACT ATTENUATORS TO STAGE II ROADWAY DETOUR LOCATION.

INSTALL TEMPORARY PAVEMENT MARKINGS FOR STAGE 2 ROADWAY DETOUR.

**POST STAGE**

REMOVE ALL TEMPORARY CONCRETE BARRIERS, IMPACT ATTENUATORS, AND DRUMS.

REMOVE TEMPORARY SIGNALS, DETECTION, INTERCONNECT CABLE AND SERVICE DROP.

REMOVE STAGE II ROADWAY DETOUR TEMPORARY PAVEMENT MARKINGS.

INSTALL PERMANENT PAVEMENT MARKINGS.

REMOVE ALL REMAINING CONSTRUCTION SIGNS AND BARRICADES.

**MAINTENANCE OF TRAFFIC GENERAL NOTES**

1. THE MAINTENANCE OF TRAFFIC CONTROL (MOT) PLANS SHALL SERVE AS A GUIDE FOR SAFE DIVERSION OF TRAFFIC DURING EXECUTION OF THIS CONTRACT. HOWEVER, THE CONTRACTOR MAY MODIFY THE MOT PLANS TO MEET CONSTRUCTION NEEDS BUT NOT AT THE EXPENSE OF PUBLIC SAFETY OR CONVENIENCE. ANY CHANGES TO THE MOT PLANS SHALL BE SUBMITTED TO THE ENGINEER FOR APPROVAL.
2. THE ENGINEER SHALL BE INFORMED 48 HOURS IN ADVANCE OF ANY CHANGE TO THE MOT PLANS.
3. ALL EXISTING PAVEMENT MARKINGS IN CONFLICT WITH THE MAINTENANCE OF TRAFFIC STRIPING SHALL BE REMOVED TO THE LIMITS SHOWN IN THE PLANS.
4. ALL TEMPORARY PAVEMENT MARKING WHICH CONFLICTS WITH THE NEXT STAGE OR FINAL STRIPING SHALL BE REMOVED TO THE LIMITS SHOWN IN THE PLANS AND IN THE SCHEDULE OF PAVEMENT MARKING.
5. ALL TRAFFIC CONTROL DEVICES USED FOR THE MAINTENANCE OF TRAFFIC, AS DETAILED ON THE PLANS, OR HIGHWAY STANDARD SHALL BE REFLECTORIZED PRIOR TO INSTALLATION AND CLEANED AS SPECIFIED IN MAINTENANCE OF TRAFFIC SPECIAL PROVISIONS OR AS DIRECTED BY THE ENGINEER.
6. ALL DRUMS, VERTICAL PANELS AND BARRICADES ADJACENT TO THE EDGE OF TRAVELED WAY SHALL BE EQUIPPED WITH BI-DIRECTIONAL STEADY-BURNING LIGHTS.
7. ALL EXISTING SIGNS WITHIN MAINTENANCE OF TRAFFIC LIMITS WHICH ARE OBSCURED BY OR INTERFERE WITH CONSTRUCTION OPERATIONS AND MAINTENANCE OF TRAFFIC, SHALL BE COVERED OR REMOVED BY THE CONTRACTOR UNLESS SPECIFIED IN THE PLANS OR WHEN DIRECTED BY THE ENGINEER. THIS WORK SHALL BE IN ACCORDANCE WITH ARTICLE 107.25 OF THE IDOT STANDARD SPECIFICATIONS.
8. ORIGINAL STRUCTURE AND SECTION NUMBERS ARE INDICATED IN THE MOT PLANS AS AN ADDITIONAL INFORMATION SOURCE IF NEEDED.
9. THE CONTRACTOR SHALL CONTACT THE IDOT DISTRICT 2 ENGINEER AT (815)284-2271 A MINIMUM OF 72 HOURS IN ADVANCE OF BEGINNING WORK.

**PAY ITEMS FOR MAINTENANCE OF TRAFFIC WORK**

ITEM "TRAFFIC CONTROL AND PROTECTION, STANDARD 701201" IS INTENDED FOR THE MATERIAL, EQUIPMENT AND LABOR NECESSARY TO WARN AND CONTROL TRAFFIC IN ACCORDANCE WITH IDOT STANDARD 701201 DURING INSTALLATION, IMPLEMENTATION AND REMOVAL OF TRAFFIC SIGNALS, TEMPORARY CONCRETE BARRIERS, AND ATTENUATORS.

ITEM "TRAFFIC CONTROL AND PROTECTION, STANDARD 701321" IS INTENDED FOR THE MATERIAL, EQUIPMENT AND LABOR NECESSARY FOR THE INSTALLATION, MAINTENANCE AND ULTIMATE REMOVAL OF SIGNS, DRUMS, LIGHTS, PANELS, AND REFLECTORS NECESSARY FOR STAGED WORKZONE PROTECTION AS SPECIFIED IN THE PLANS AND SPECIFICATIONS.

ITEM "TRAFFIC CONTROL AND PROTECTION, STANDARD 701501" IS INTENDED FOR THE MATERIAL, EQUIPMENT AND LABOR NECESSARY FOR THE INSTALLATION, MAINTENANCE AND ULTIMATE REMOVAL OF SIGNS, AND PANELS NECESSARY FOR THE BRANDON ROAD CLOSURE AS SPECIFIED IN THE PLANS AND SPECIFICATIONS.

ITEM "TRAFFIC CONTROL AND PROTECTION, STANDARD 701801" IS INTENDED FOR THE MATERIAL, EQUIPMENT AND LABOR NECESSARY FOR THE INSTALLATION, RELOCATION, MAINTENANCE AND ULTIMATE REMOVAL OF SIGNS, PANELS AND TEMPORARY ACCESS RAMPS NECESSARY FOR THE STAGE I SIDEWALK AND PEDESTRIAN DETOURS, INCLUDING FLAGGING, AS SPECIFIED IN THE PLANS AND SPECIFICATIONS.

ITEMS "TEMPORARY CONCRETE BARRIER" AND "RESET TEMPORARY CONCRETE BARRIER" ARE INTENDED FOR THE MATERIAL, EQUIPMENT AND LABOR NECESSARY FOR STAGE I AND BRANDON ROAD CLOSURE INSTALLATION, STAGE II RELOCATION, MAINTENANCE AND ULTIMATE REMOVAL OF TEMPORARY CONCRETE BARRIER TO THE LIMITS SPECIFIED IN THE PLANS AND SPECIFICATIONS.

ITEMS "IMPACT ATTENUATORS, TEMPORARY" AND "IMPACT ATTENUATORS, RELOCATE" ARE INTENDED FOR THE MATERIAL, EQUIPMENT AND LABOR NECESSARY FOR STAGE I INSTALLATION, STAGE II RELOCATION, MAINTENANCE AND ULTIMATE REMOVAL OF TEMPORARY IMPACT ATTENUATORS OF THE TYPE, AND TO THE LIMITS SPECIFIED IN THE PLANS AND SPECIFICATIONS.

ITEM "PAVEMENT MARKING TAPE" IS INTENDED FOR THE MATERIAL, EQUIPMENT AND LABOR NECESSARY TO PLACE AND MAINTAIN TEMPORARY PAVEMENT MARKING TAPE OF THE TYPE, SIZE AND LIMITS SPECIFIED IN THE PLANS AND SPECIFICATIONS.

ITEM "PAVEMENT MARKING TAPE" IS INTENDED FOR THE MATERIAL, EQUIPMENT AND LABOR NECESSARY TO PLACE AND MAINTAIN TEMPORARY PAVEMENT MARKING TAPE OF THE TYPE, SIZE AND LIMITS SPECIFIED IN THE PLANS AND SPECIFICATIONS.

ITEM "TEMPORARY PAVEMENT MARKING REMOVAL" IS INTENDED FOR THE MATERIAL, EQUIPMENT AND LABOR NECESSARY TO REMOVE TEMPORARY TAPE TO THE LIMITS SPECIFIED IN THE PLANS.

ITEM "PAINT PAVEMENT MARKING LINE, 4" IS INTENDED FOR THE MATERIAL, EQUIPMENT AND LABOR NECESSARY TO PLACE PERMANENT 4" PAVEMENT MARKING OF THE TYPE AND TO THE LIMITS SPECIFIED IN THE PLANS AND SPECIFICATIONS.

ITEM "TEMPORARY BRIDGE TRAFFIC INSTALLATION" IS INTENDED FOR THE PERMITTING, MATERIAL, EQUIPMENT AND LABOR NECESSARY TO INSTALL, OPERATE, MAINTAIN AND ULTIMATELY REMOVE A COMPLETE TEMPORARY TRAFFIC SIGNAL SYSTEM INCLUDING DETECTION AS SPECIFIED IN THE PLANS AND SPECIFICATIONS.

MODEL Path: C:\Users\scottw\Desktop\WO 1 0064004 - Savanna\Submittals\2021\2021 1 - Bechtel\DOT NOTES.dgn

**HAMILTON CONSULTING ENGINEERS, INC.**  
 3230 Executive Drive, Joliet, Illinois 60431  
 Ph: (815) 730-3444 Fax: (815) 730-6703  
 IL LICENSE NO. 184-003005  
 © 2020 HAMILTON CONSULTING ENGINEERS, INC.

USER NAME = scottw	DESIGNED - MGB	REVISED -
	DRAWN - DWS	REVISED -
PLOT SCALE = 100,0000' / in.	CHECKED -	REVISED -
PLOT DATE = 03/09/2021	DATE - 01-11-2021	REVISED -

**STATE OF ILLINOIS  
DEPARTMENT OF TRANSPORTATION**

**IL 84, SAVANNA, IL  
GENERAL NOTES / CONSTRUCTION SEQUENCE**

SCALE: SHEET OF 10 SHEETS STA. TO STA.

F.A.P. RTE.	SECTION	COUNTY	TOTAL SHEETS	SHEET NO.
308	(105VB-3)BJR	CARROLL	22	2
CONTRACT NO. 64P66				
ILLINOIS		FED. AID PROJECT		

SUMMARY OF QUANTITIES

0047  
100% STATE

0047  
100% STATE

CODE NO.	ITEM	UNIT	TOTAL QUANTITY
42001300	PROTECTIVE COAT	SQ YD	70
50102400	CONCRETE REMOVAL	CU YD	15.3
50300255	CONCRETE SUPERSTRUCTURE	CU YD	15.3
50301350	CONCRETE SUPERSTRUCTURE APPROACH SLAB	CU YD	18.9
50800205	REINFORCEMENT BARS, EPOXY COATED	POUND	5880
50800515	BAR SPLICERS	EACH	16
52000110	PREFORMED JOINT STRIP SEAL	FOOT	84
67100100	MOBILIZATION	L SUM	1
70100405	TRAFFIC CONTROL AND PROTECTION, STANDARD 701321	EACH	1
70100450	TRAFFIC CONTROL AND PROTECTION, STANDARD 701201	L SUM	1
70102620	TRAFFIC CONTROL AND PROTECTION, STANDARD 701501	L SUM	1
70102640	TRAFFIC CONTROL AND PROTECTION, STANDARD 701801	L SUM	1
70106500	TEMPORARY BRIDGE TRAFFIC SIGNAL INSTALLATION	EACH	1
7010704	PAVEMENT MARKING BLACKOUT TAPE, 4"	FOOT	3,049
70300904	PAVEMENT MARKING TAPE, TYPE IV, 4"	FOOT	2,675

CODE NO.	ITEM	UNIT	TOTAL QUANTITY
70300924	PAVEMENT MARKING TAPE TYPE IV, 24"	FOOT	24
70400100	TEMPORARY CONCRETE BARRIER	FOOT	338
70400200	RELOCATE TEMPORARY CONCRETE BARRIER	FOOT	338
70600251	IMPACT ATTENUATORS, TEMPORARY (NON-REDIRECTIVE, NARROW), TEST LEVEL 3	EACH	2
70600352	IMPACT ATTENUATORS, RELOCATE (NON-REDIRECTIVE, NARROW), TEST LEVEL 3	EACH	2
* 78001110	PAINT PAVEMENT MARKING LINE 4"	FOOT	1,759
X7030005	TEMPORARY PAVEMENT MARKING REMOVAL	SQ FT	1,526
Z0004552	APPROACH SLAB REMOVAL	CU YD	43.3
31101000	SUBBASE GRANULAR MATERIAL, TYPE B	TON	20

\*= SPECIALTY ITEM

MODEL: D:\hail\Users\scottw\Desktop\WO\_1\_004-004-1\_Savanna\Submittal\9-21\02011-1B-shft-SQ.dgn

**HAMILTON CONSULTING ENGINEERS, INC.**  
3230 Executive Drive, Joliet, Illinois 60431  
Ph: (815) 730-3444 Fax: (815) 730-6703  
LICENSE NO. 184-002005  
© 2020 HAMILTON CONSULTING ENGINEERS, INC.

USER NAME = scottw	DESIGNED - MGB	REVISED -
PLOT SCALE = 2.0000"/in.	DRAWN - DWS	REVISED -
PLOT DATE = 02/15/2021	CHECKED -	REVISED -
	DATE - 01-11-2021	REVISED -

**STATE OF ILLINOIS  
DEPARTMENT OF TRANSPORTATION**

**IL 84, SAVANNA, IL  
SCHEDULE OF QUANTITIES**

SCALE: NONE SHEET 3 OF 10 SHEETS STA. TO STA.

F.A.P. RTE. 308	SECTION (105VB-3)BJR	COUNTY CARROLL	TOTAL SHEETS 17	SHEET NO. 3
CONTRACT NO. 64P66			ILLINOIS FED. AID PROJECT	

MODEL Path: C:\Users\scottw\Desktop\WO\_1\_0062004 - Savannah\Submittals\20211115\Bentham\BSCHE02.dgn  
 FILE NAME: C:\Users\scottw\Desktop\WO\_1\_0062004 - Savannah\Submittals\20211115\Bentham\BSCHE02.dgn

**HAMILTON CONSULTING ENGINEERS, INC.**  
 3230 Executive Drive, Joliet, Illinois 60431  
 Ph: (815) 730-3444 Fax: (815) 730-6703  
 LICENSE NO. 184-003005  
 © 2020 HAMILTON CONSULTING ENGINEERS, INC.

USER NAME = scottw	DESIGNED - MGB	REVISED -
	DRAWN - DWS	REVISED -
PLOT SCALE = 2,0000' / 1 in.	CHECKED -	REVISED -
PLOT DATE = 03/09/2021	DATE - 01-11-2021	REVISED -

**STATE OF ILLINOIS  
 DEPARTMENT OF TRANSPORTATION**

**IL 84, SAVANNA, IL  
 PAVEMENT MARKING SCHEDULE**

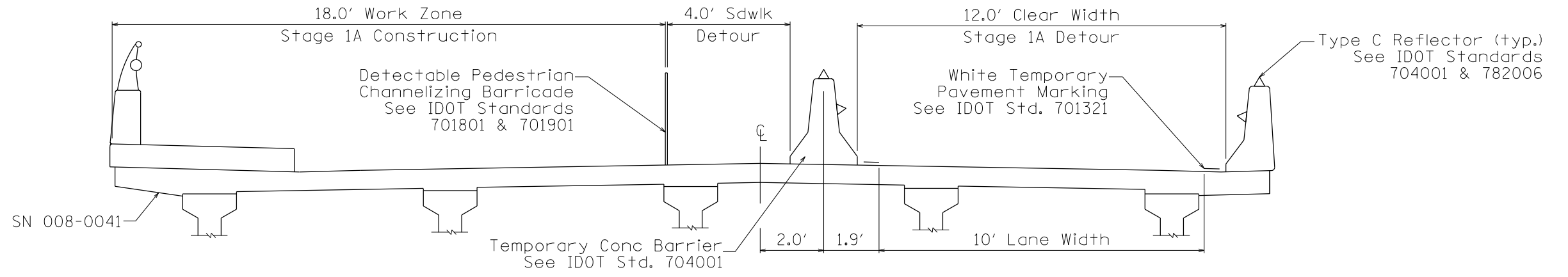
SCALE: NONE    SHEET 3 OF 10 SHEETS    STA.    TO STA.

F.A.P. RTE.	SECTION	COUNTY	TOTAL SHEETS	SHEET NO.
308	(105VB-3)BJR	CARROLL	22	4
CONTRACT NO. 64P66				
ILLINOIS FED. AID PROJECT				

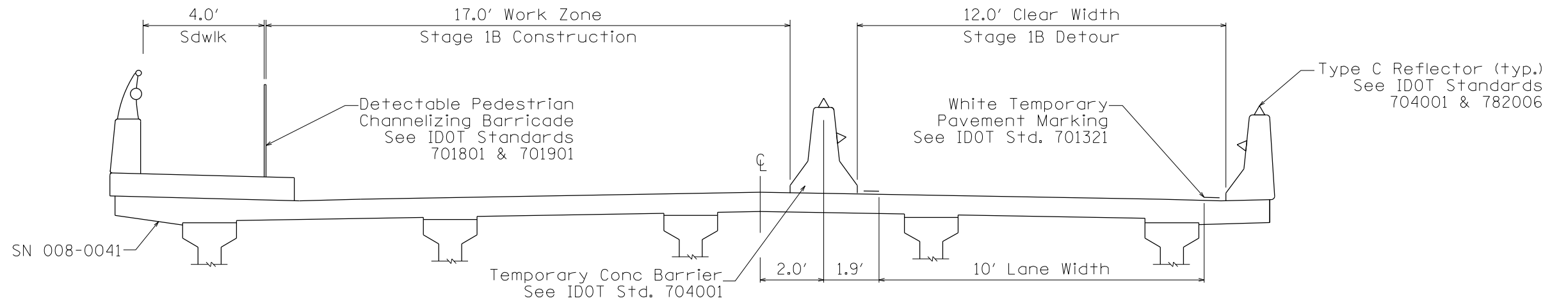
PAVEMENT MARKING SCHEDULE										
Stage 1										
Line	STATION		Description	Location	TEMPORARY TAPE (LF)			REMOVAL (SF)	PERMANENT STRIPE (LF)	
	From	To			4" Blackout	4" White	24" White	Temp Mark	4" Yellow	4" White
1	29+71	32+00	Blackout Existing Solid Line Y	Centerline	458					
2	32+00	36+20	Blackout Existing Skip Dash Y	Centerline	105					
3	30+09	35+60	Blackout Existing Solid Line W	Right Edgeline	551					
4	29+15	35+60	Blackout Existing Solid Line W	Left Edgeline	645					
5	28+20	35+60	Temporary Line White	Rt Stage I Detour Edgeline		740				
6	29+15	35+60	Temporary Line White	Lt Stage I Detour Edgeline		645				
7	29+20		Temporary Stop Bar	N End Stage I Detour			12			
8	36+20		Temporary Stop Bar	S End Stage I Detour			12			
Stage 2										
9	29+15	35+60	Temp Line Blackout 4"	Rt Stage I Detour Edgeline	645					
10	29+15	35+60	Temp Line Blackout 4"	Lt Stage I Detour Edgeline	645					
11	29+15	35+60	Temporary Line White	Rt Stage II Detour Edgeline		645				
12	29+15	35+60	Temporary Line White	Lt Stage II Detour Edgeline		645				
Post Stage										
13	29+20		Remove Temporary Stop Bar	N End Stage II Detour			24.0			
14	36+20		Remove Temporary Stop Bar	S End Stage II Detour			24.0			
15	28+20	35+60	Remove Temp Line White	Rt Stage II Detour Edgeline			246.7			
16	29+15	35+60	Remove Temp Line White	Lt Stage II Detour Edgeline			215.0			
17	29+15	35+60	Remove Temp Line Blackout 4"	Rt Stage I Detour Edgeline			215.0			
18	29+15	35+60	Remove Temp Line Blackout 4"	Lt Stage I Detour Edgeline			215.0			
19	29+71	32+00	Perm Solid Line Yellow	Centerline			152.7	458		
20	32+00	36+20	Perm Skip Dash Yellow	Centerline			35.0	105		
21	30+09	35+60	Perm Solid Line White	Right Edgeline			183.7		551	
22	29+15	35+60	Perm Solid Line White	Left Edgeline			215.0			645
<b>TOTAL</b>					<b>3049</b>	<b>2675</b>	<b>24</b>	<b>1526.0</b>	<b>563</b>	<b>1196</b>

OFFSET SCHEDULE FOR TEMP TAPE, PAVEMENT MARKING, PEDESTRIAN BARRICADE AND TEMPORARY CONCRETE BARRIER														
Stage I														
Line	STATION		Description	Location	Begin Point		Breakpoint 1		Breakpoint 2		Breakpoint 3		End Point	
	From	To			Station	Offset	Station	Offset	Station	Offset	Station	Offset	Station	Offset
5	28+20	35+60	Temporary Line White	Rt Stage I Detour Edgeline	28+20	22.0' rt	29+00	13.9' rt	33+90	13.9' rt	34+10	12.0' rt	35+60	12.0' rt
6	29+15	35+60	Temporary Line White	Lt Stage I Detour Edgeline	29+15	24.0' lt	30+15	0.0' lt	30+75	3.9' rt	33+90	3.9' rt	35+60	12.0' lt
	30+45	34+80	Temp Concrete Barrier	Stage I Detour	30+45	4.0' lt	30+75	2.9' rt	33+40	2.9' rt	33+80	3.9' rt	33+80	4.0' lt
	30+63	33+50	Ped Channelizing Barricade	Stage IA Pedestrian Detour	30+63	20'-11' lt	30+75	2.9' lt	33+40	2.9' lt	33+40	2.9' lt	33+50	11'-20' lt
	30+63	33+50	Ped Channelizing Barricade	Stage IB Pedestrian Detour	30+63	16' lt							33+50	16' lt
Stage II														
11	29+15	35+60	Temporary Line White	Rt Stage II Detour Edgeline	29+15	12.0' rt	30+15	0.0' rt	30+75	3.9' lt	33+90	3.9' lt	35+60	12.0' rt
12	29+15	35+60	Temporary Line White	Lt Stage II Detour Edgeline	29+15	25.5' lt	30+00	13.9' lt	33+90	13.9' lt	33+90	13.9' lt	35+60	12.0' lt
	30+45	34+80	Temp Concrete Barrier	Stage II Detour	30+45	4.0' rt	30+75	2.8' lt	33+40	2.8' lt			33+80	4.0' rt
Post Stage														
19	29+71	32+00	Perm Solid Line Yellow	Centerline	29+71	0.0'							32+00	0.0'
20	32+00	36+20	Perm Skip Dash Yellow	Centerline	32+00	0.0'							36+20	0.0'
21	30+09	35+60	Perm Solid Line White	Right Edgeline	30+09	12.0' rt							35+60	12.0' rt
22	28+28	35+60	Perm Solid Line White	Left Edgeline	29+15	24.0' lt	30+00	12.0' lt					35+60	12.0' lt

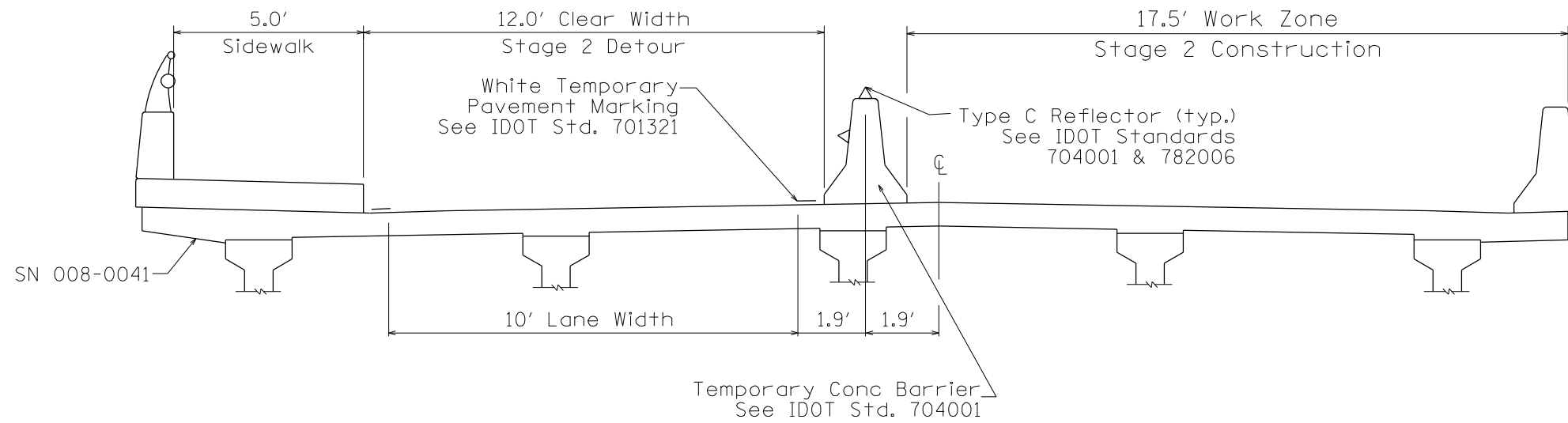




STAGE 1A



STAGE 1B



STAGE 2

MODEL: D:\p1\h\c\Users\scottw\Desktop\WO\_1\_008-0041 - Savannah\Submittals\2021120911-Best\1015-SEC.dgn  
 FILE NAME: C:\Users\scottw\Desktop\WO\_1\_008-0041 - Savannah\Submittals\2021120911-Best\1015-SEC.dgn

**HAMILTON CONSULTING ENGINEERS, INC.**  
 3230 Executive Drive, Joliet, Illinois 60431  
 Ph: (815) 730-3444 Fax: (815) 730-6703  
 LICENSE NO. 184-003205  
 © 2020 HAMILTON CONSULTING ENGINEERS, INC.

USER NAME = scottw	DESIGNED - MGB	REVISED -
	DRAWN - MGB	REVISED -
PLOT SCALE = 400,0000' / in.	CHECKED -	REVISED -
PLOT DATE = 03/09/2021	DATE - 01-11-2021	REVISED -

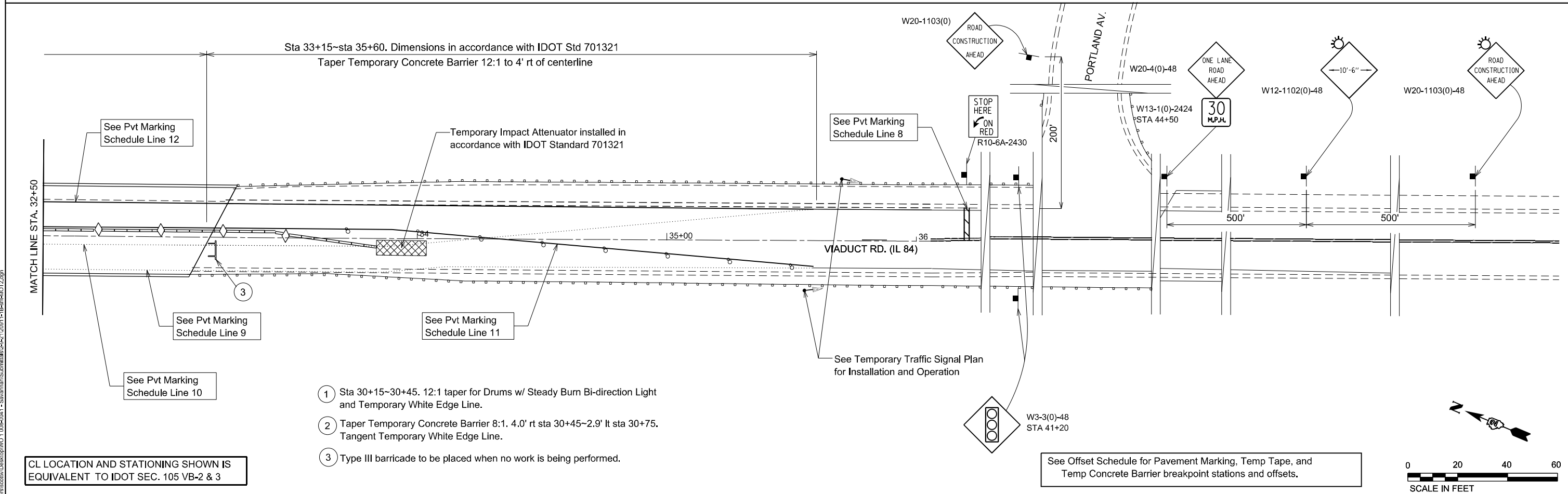
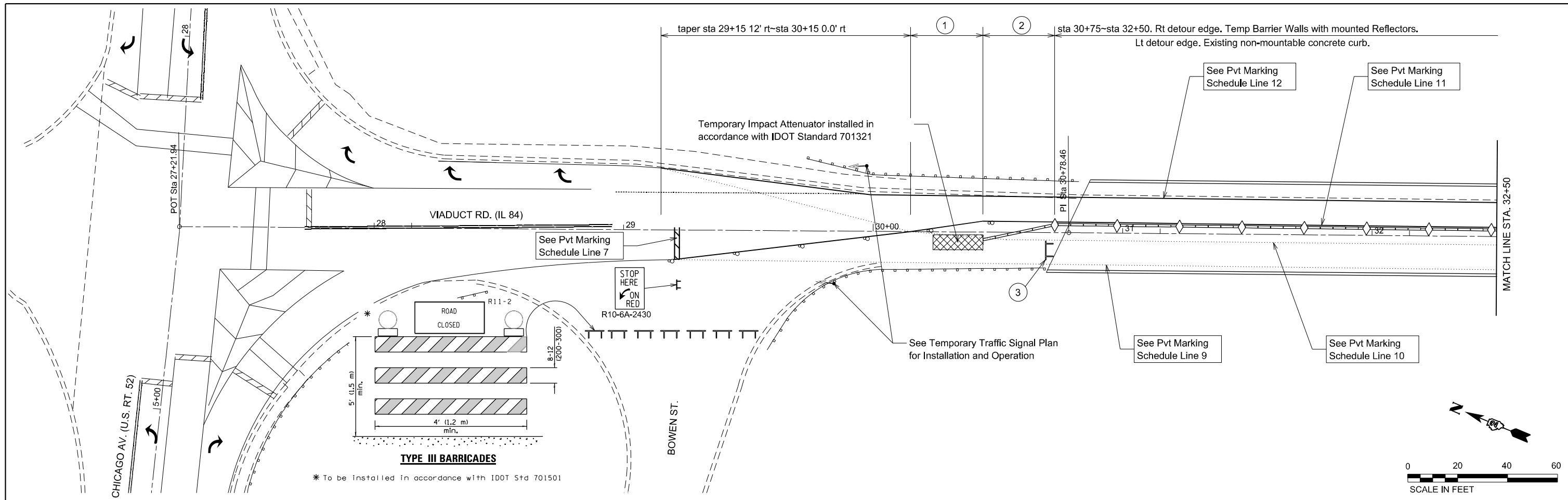
**STATE OF ILLINOIS**  
**DEPARTMENT OF TRANSPORTATION**

**IL 84, SAVANNA, IL**  
**MAINTENANCE OF TRAFFIC STAGING TYPICAL SECTION**

SCALE: NTS    SHEET 4 OF 10 SHEETS    STA.    TO STA.

F.A.P. RTE.	SECTION	COUNTY	TOTAL SHEETS	SHEET NO.
308	(105VB-3)BJR	CARROLL	22	5
CONTRACT NO. 64P66				
ILLINOIS FED. AID PROJECT				





- ① Sta 30+15-30+45. 12:1 taper for Drums w/ Steady Burn Bi-direction Light and Temporary White Edge Line.
- ② Taper Temporary Concrete Barrier 8:1. 4.0' rt sta 30+45-2.9' lt sta 30+75. Tangent Temporary White Edge Line.
- ③ Type III barricade to be placed when no work is being performed.

CL LOCATION AND STATIONING SHOWN IS EQUIVALENT TO IDOT SEC. 105 VB-2 & 3

See Offset Schedule for Pavement Marking, Temp Tape, and Temp Concrete Barrier breakpoint stations and offsets.

MODEL: D:\ch4\...  
 FILE NAME: C:\Users\scottw\Desktop\WO\_1\_006\0041 - Savanna\Submittal\2021\202111-18\Belt\H4072.dgn  
 3230 Executive Drive, Joliet, Illinois 60431  
 Ph: (815) 730-3444 Fax: (815) 730-6703  
 LICENSE NO. 184-002005  
 © 2020 HAMILTON CONSULTING ENGINEERS, INC.

**HAMILTON CONSULTING ENGINEERS, INC.**

USER NAME = scottw  
 PLOT SCALE = 40,0000' / in.  
 PLOT DATE = 03/09/2021

DESIGNED -	MGB	REVISED -	
DRAWN -	MGB	REVISED -	
CHECKED -		REVISED -	
DATE -	01-11-2021	REVISED -	

**STATE OF ILLINOIS  
DEPARTMENT OF TRANSPORTATION**

**IL 84, SAVANNA, IL  
MAINTENANCE OF TRAFFIC PLAN STAGE 2**

SCALE: 1"=20' SHEET 6 OF 10 SHEETS STA. TO STA.

F.A.P. RTE.	SECTION	COUNTY	TOTAL SHEETS	SHEET NO.
308	(105VB-3)BJR	CARROLL	22	7
CONTRACT NO. 64P66				
ILLINOIS FED. AID PROJECT				

MODEL: D:\p1\h\c\Users\scottw\Desktop\WO\_1\_008-0041 - Savannah\Summit\2021\11-11-2021\11-11-2021\11-11-2021.dgn  
 FILE NAME: C:\Users\scottw\Desktop\WO\_1\_008-0041 - Savannah\Summit\2021\11-11-2021\11-11-2021\11-11-2021.dgn

**HAMILTON CONSULTING ENGINEERS, INC.**  
 3230 Executive Drive, Joliet, Illinois 60431  
 Ph: (815) 730-3444 Fax: (815) 730-6703  
 LICENSE NO. 184-003205  
 © 2020 HAMILTON CONSULTING ENGINEERS, INC.

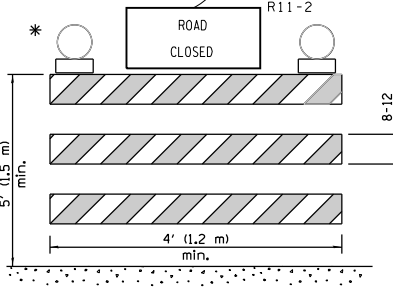
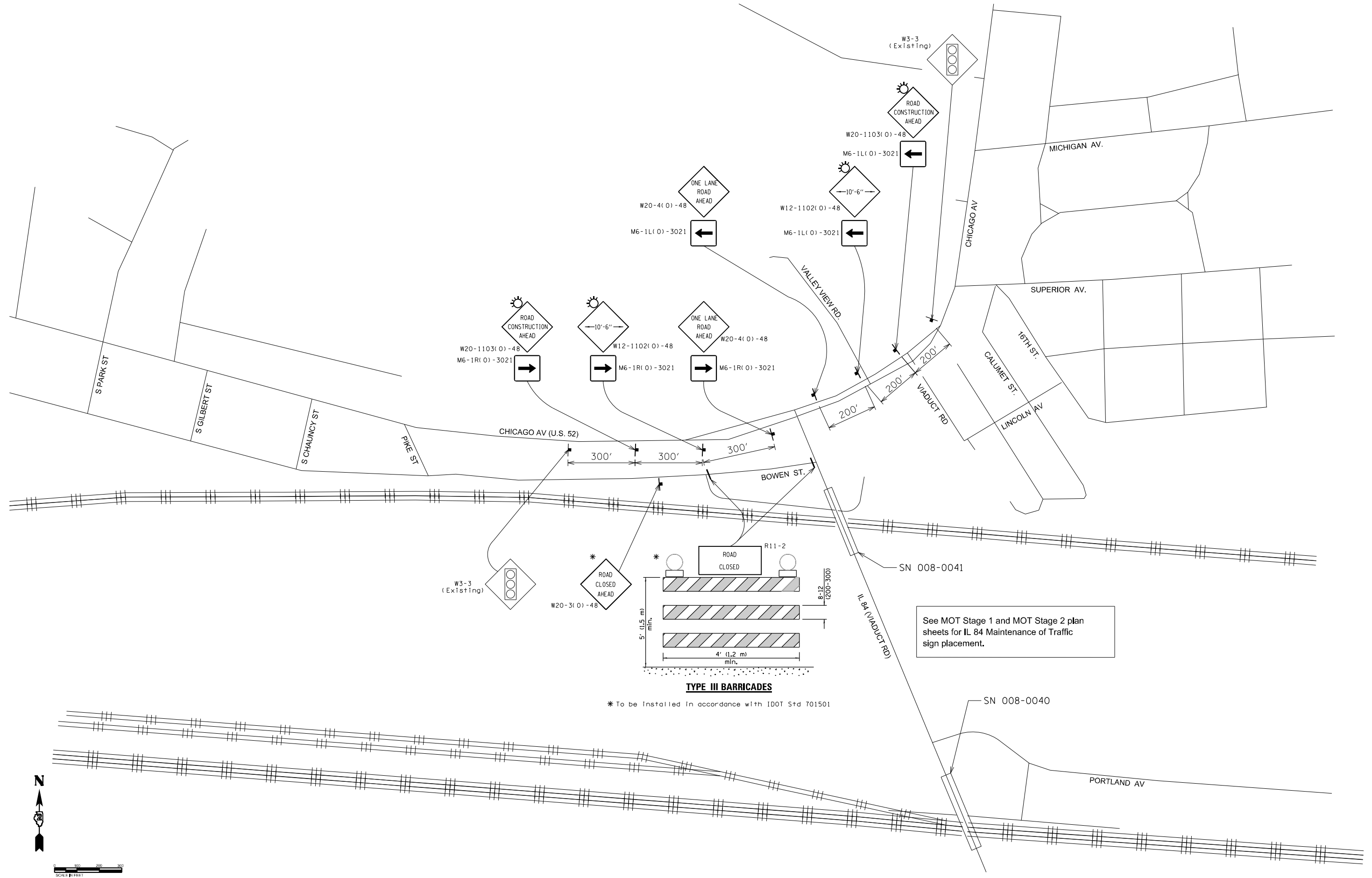
USER NAME = scottw  
 PLOT SCALE = 400,0000 "/in.  
 PLOT DATE = 03/09/2021

DESIGNED - MGB	REVISED -
DRAWN - MGB	REVISED -
CHECKED -	REVISED -
DATE - 01-11-2021	REVISED -

**STATE OF ILLINOIS  
 DEPARTMENT OF TRANSPORTATION**

**IL 84, SAVANNA, IL  
 US 52 MAINTENANCE OF TRAFFIC PLAN**  
 SCALE: NTS SHEET 7 OF 10 SHEETS STA. TO STA.

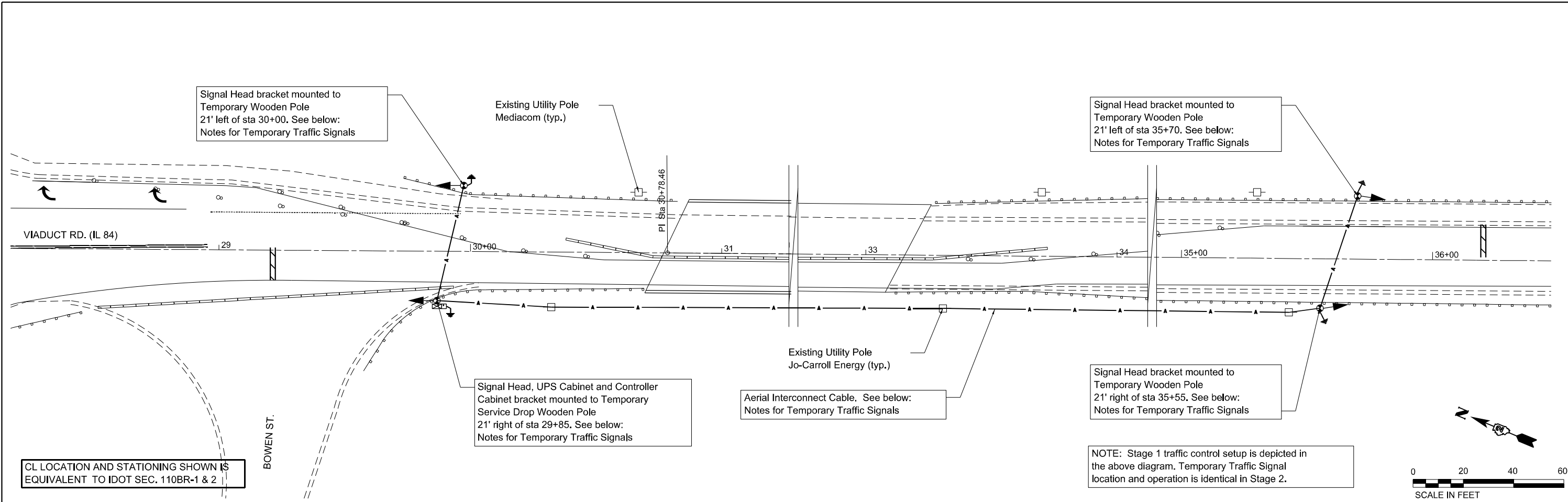
F.A.P. RTE. 308	SECTION (105VB-3)BJR	COUNTY CARROLL	TOTAL SHEETS 22	SHEET NO. 8
CONTRACT NO. 64P66				
ILLINOIS FED. AID PROJECT				



\* To be installed in accordance with IDOT Std 701501

See MOT Stage 1 and MOT Stage 2 plan sheets for IL 84 Maintenance of Traffic sign placement.



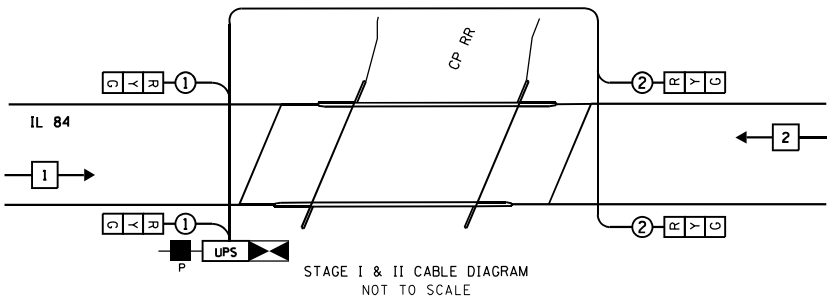


CL LOCATION AND STATIONING SHOWN IS EQUIVALENT TO IDOT SEC. 110BR-1 & 2

NOTE: Stage 1 traffic control setup is depicted in the above diagram. Temporary Traffic Signal location and operation is identical in Stage 2.

NOTES FOR TEMPORARY TRAFFIC SIGNALS

- ALL CONTROL EQUIPMENT FOR THE TEMPORARY TRAFFIC SIGNALS SHALL BE FURNISHED BY THE CONTRACTOR.
- ONLY CONTROLLERS SUPPLIED BY ONE OF THE IDOT APPROVED CLOSED LOOP EQUIPMENT MANUFACTURERS WILL BE APPROVED FOR USE AT TEMPORARY SIGNAL LOCATIONS. ALL CONTROLLERS USED FOR TEMPORARY TRAFFIC SIGNALS SHALL BE FULLY ACTIVATED NEMA MICROPROCESSOR BASED WITH RS232 DATA ENTRY PORTS COMPATIBLE WITH EXISTING MONITORING SOFTWARE APPROVED BY IDOT, INSTALLED IN A NEMA TS2 CABINET. ONLY ONE BRAND OF CONTROLLER WILL BE ACCEPTED FOR ANY ONE CONTRACT.
- ALL TRAFFIC SIGNAL SECTIONS SHALL BE LED AND 12" DIAMETER. HEADS SHALL BE BRACKET MOUNTED ON TEMPORARY WOODEN POLES IN ACCORDANCE WITH IDOT STANDARD 890006-01 AND AS INDICATED ON THE TEMPORARY SIGNAL PLAN OR AS DIRECTED BY THE ENGINEER. EACH TEMPORARY TRAFFIC SIGNAL HEAD SHALL HAVE ITS OWN CABLE FROM THE CONTROLLER CABINET TO THE SIGNAL HEAD.
- THE CONTRACTOR SHALL VERIFY CLEARANCE REQUIREMENTS WITH UTILITY COMPANIES AND CONTACT JULIE PRIOR TO INSTALLATION OF TEMPORARY WOODEN POLES. ANY REQUIRED MODIFICATIONS OR ADJUSTMENTS TO HEIGHT OR LOCATION MUST BE APPROVED BY THE ENGINEER.
- TEMPORARY SIGNALS SHALL BE POWERED AND INTERCONNECTED IN A MANNER APPROVED BY IDOT DISTRICT 2, AND SHALL INCLUDE AN UNINTERRUPTIBLE POWER SUPPLY IN ACCORDANCE WITH IDOT STANDARD 862001. ELECTRIC UTILITY SERVICE DROP LOCATION AND THE AERIAL INTERCONNECT CABLE ROUTING ALONG EXISTING UTILITY POLES SHOWN IN PLANS IS SUGGESTED. ULTIMATE SERVICE DROP LOCATION AND INTERCONNECT CABLE ROUTING, INCLUDING ALL REQUIRED PERMITTING AND OTHER ARRANGEMENTS NEEDED WITH IDOT AND UTILITY COMPANIES, SHALL BE THE RESPONSIBILITY OF THE CONTRACTOR.
- TRAFFIC SIGNAL MANAGEMENT SYSTEMS AND REQUIRED EQUIPMENT SHALL BE PLACED AND MAINTAINED IN OPERATION AS INDICATED ON THE PLANS AND TO THE SATISFACTION OF THE ENGINEER.
- THE TEMPORARY TRAFFIC SIGNAL DETECTION SYSTEM SHALL BE INSTALLED AND MAINTAINED IN ACCORDANCE WITH IDOT STANDARDS 701321, 886001 AND 886006, AND TO THE SATISFACTION OF THE ENGINEER.
- COST FOR ALL PERMITTING, INSTALLATION, POWER, AND MAINTENANCE FOR TEMPORARY TRAFFIC SIGNALS SHALL BE INCLUDED IN ITEM "TEMPORARY BRIDGE TRAFFIC SIGNAL INSTALLATION".



SYMBOL LEGEND

- EXISTING UTILITY POLE
- 3-1/C NO2 AERIAL CABLE ALUMINUM WITH MESSENGER WIRE
- GROUND ROD 5/8" DIA X 10'
- BRACKET MOUNTED SIGNAL HEAD
- TEMPORARY WOOD POLE NOMINAL 40 FT., CLASS 4
- TEMPORARY TRAFFIC CONTROLLER WITH UPS AND BOTTOM PLATE MOUNTED TO WOOD POLE
- SINGLE ENTRY PHASE

CONTACT INFORMATION

IDOT DISTRICT 2 - (815) 284-2271  
 ELECTRICITY PROVIDER & WEST UTILITY POLE LINE  
 JO-CARROLL ENERGY - Brandon Byer (815) 858-5746  
 EAST UTILITY POLE LINE  
 MEDIACOM - Chris Minard (815) 597-5103

SCHEDULE OF QUANTITIES

QUANTITY	UNIT	ITEM
1	EACH	TEMPORARY BRIDGE TRAFFIC SIGNAL INSTALLATION

STAGE I & II TRAFFIC SIGNAL SEQUENCE							
PHASE	A			B			
INTERVAL	1	2	3	4	5	6	7
TIME (SEC)	40	5	15	20	5	15	REST
	G	Y	R	R	R	R	G
	R	R	R	G	Y	R	R

MODEL: D:\p1\11\110BR-1 & 2\110BR-1 & 2.dwg  
 FILE NAME: C:\Users\scottw\Documents\110BR-1 & 2\110BR-1 & 2.dwg  
 3230 Executive Drive, Joliet, Illinois 60431  
 Ph: (815) 730-3444 Fax: (815) 730-6703  
 LICENSE NO. 184-003005  
 © 2020 HAMILTON CONSULTING ENGINEERS, INC.

**HAMILTON CONSULTING ENGINEERS, INC.**

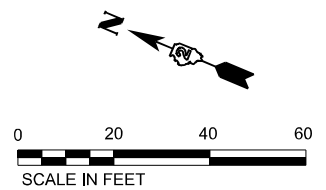
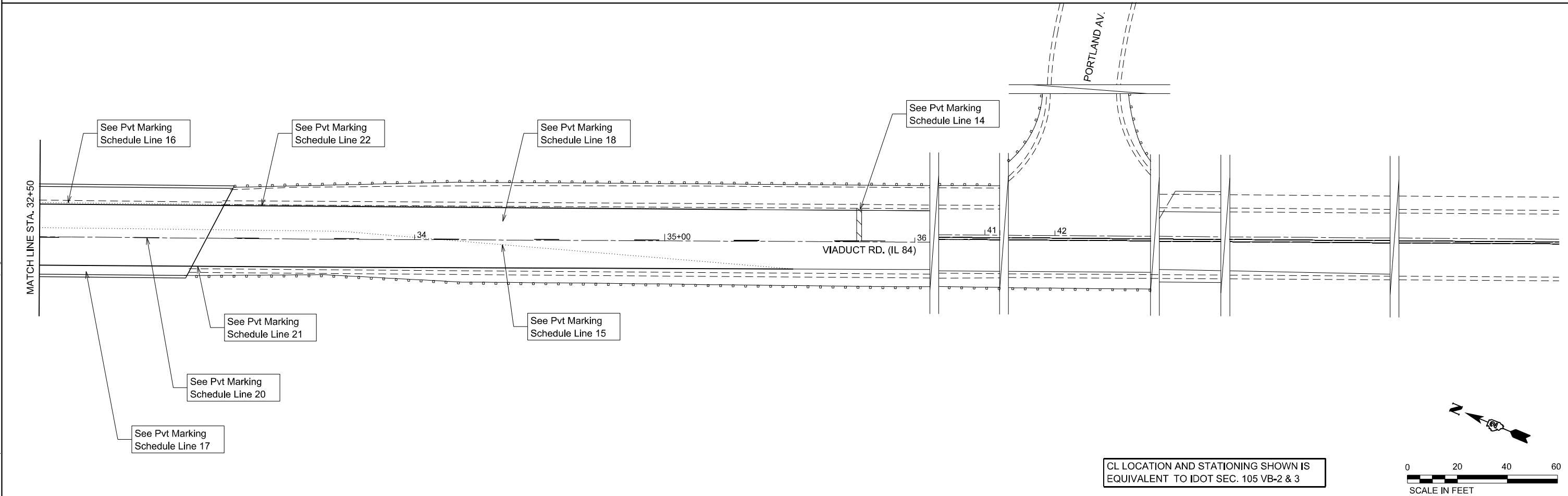
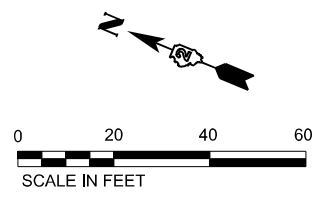
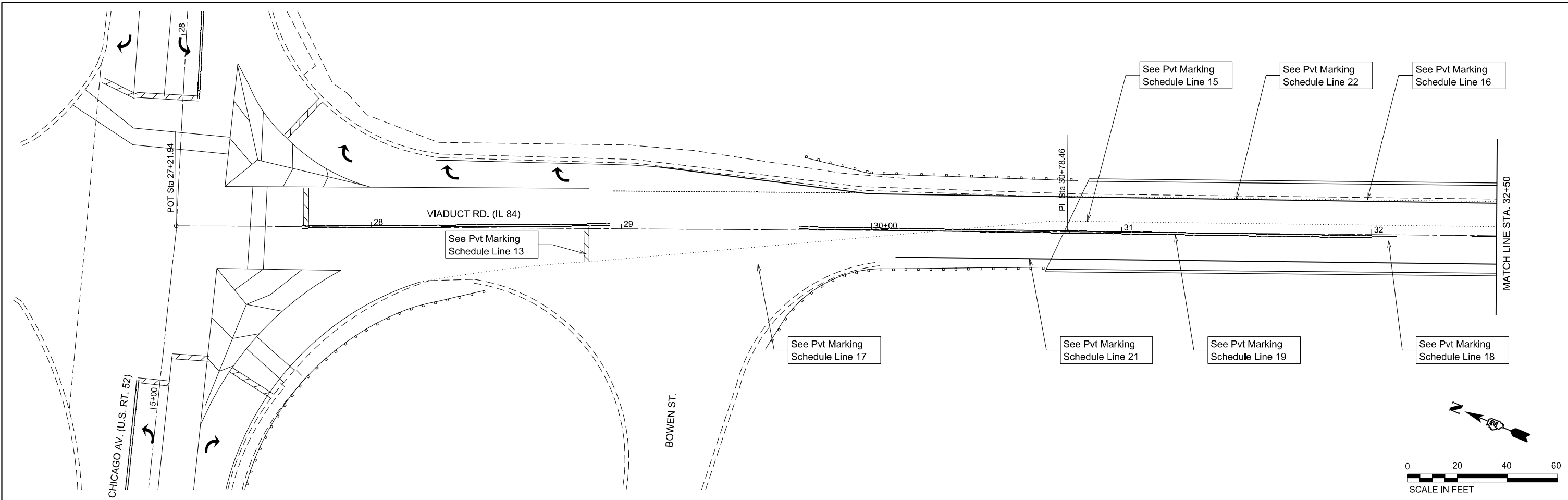
USER NAME = scottw	DESIGNED - MGB	REVISED -
PLOT SCALE = 40,000' / in.	DRAWN - DWS	REVISED -
PLOT DATE = 03/09/2021	CHECKED -	REVISED -
	DATE - 01-11-2021	REVISED -

**STATE OF ILLINOIS  
 DEPARTMENT OF TRANSPORTATION**

**IL 84, SAVANNA, IL  
 TEMPORARY TRAFFIC SIGNAL PLAN**

SCALE: 1"=20' SHEET 9 OF 10 SHEETS STA. TO STA.

F.A.P. RTE.	SECTION	COUNTY	TOTAL SHEETS	SHEET NO.
308	(105VB-3)BJR	CARROLL	22	9
CONTRACT NO. 64P66				
ILLINOIS FED. AID PROJECT				



CL LOCATION AND STATIONING SHOWN IS EQUIVALENT TO IDOT SEC. 105 VB-2 & 3

MODEL: D:\p1\1  
 FILE NAME: C:\Users\scottw\Desktop\10062021 - Savannah\Submittal\20211103\11-Belt\Final Striping.dwg  
 3230 Executive Drive, Joliet, Illinois 60431  
 Ph: (815) 730-3444 Fax: (815) 730-6703  
 LICENSE NO. 184-003095  
 © 2020 HAMILTON CONSULTING ENGINEERS, INC.

<b>HAMILTON CONSULTING ENGINEERS, INC.</b> 3230 Executive Drive, Joliet, Illinois 60431 Ph: (815) 730-3444 Fax: (815) 730-6703 LICENSE NO. 184-003095 © 2020 HAMILTON CONSULTING ENGINEERS, INC.	USER NAME = scottw PLOT SCALE = 40,0000' / in. PLOT DATE = 03/09/2021	DESIGNED - MGB DRAWN - MGB CHECKED - DATE - 01-11-2021	REVISED - REVISED - REVISED - REVISED -	<b>STATE OF ILLINOIS          DEPARTMENT OF TRANSPORTATION</b>	<b>IL 84, SAVANNA, IL          PERMANENT STRIPING PLAN</b>	F.A.P. RTE. 308 SECTION (105VB-3)BJR COUNTY CARROLL TOTAL SHEETS 22 SHEET NO. 10 CONTRACT NO. 64P66	ILLINOIS FED. AID PROJECT
	SCALE: 1"=20' SHEET 10 OF 10 SHEETS STA. TO STA.						



**GENERAL NOTES**

All structural steel shall conform to AASHTO Classification M-270 Gr. 36, unless otherwise noted.

Plan dimensions and details relative to existing plans are subject to nominal construction variations. The Contractor shall field verify existing dimensions and details affecting new construction and make necessary approved adjustments prior to construction or ordering of materials. Such variations shall not be cause for additional compensation for a change in scope of the work, however, the Contractor will be paid for the quantity actually furnished at the unit price bid for the work.

Prior to pouring the new concrete deck, all heavy or loose rust, loose mill scale, and other loose or potentially detrimental foreign material shall be removed from the surfaces in contact with concrete. Tightly adhered paint may remain unless otherwise noted. Removal shall be accomplished by methods that will not damage the steel and the cost will be included in the pay item covering removal of the existing concrete.

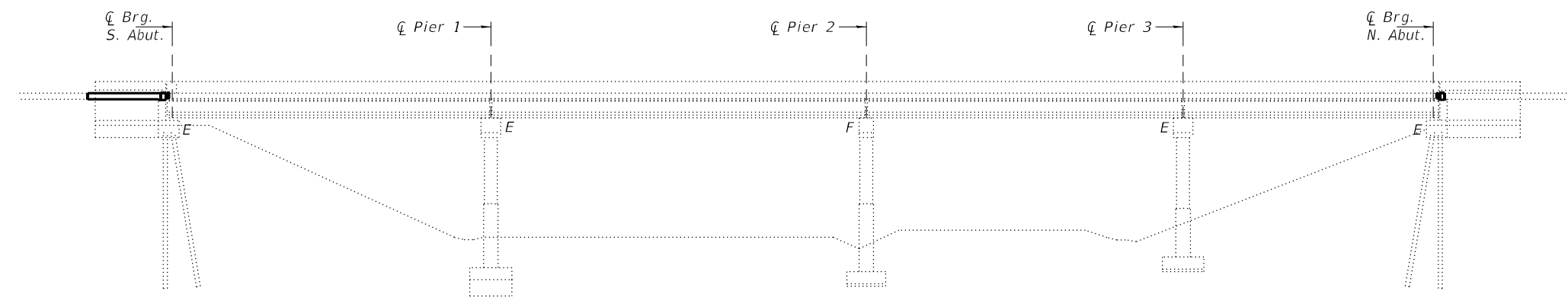
Reinforcement bars designated (E) shall be epoxy coated.

Existing reinforcement bars extending into the removal area shall be cleaned, straightened and incorporated into the new construction. Any reinforcement bars that are damaged during concrete removal shall be replaced with an approved bar splicer or anchorage system. Cost included with Concrete Removal.

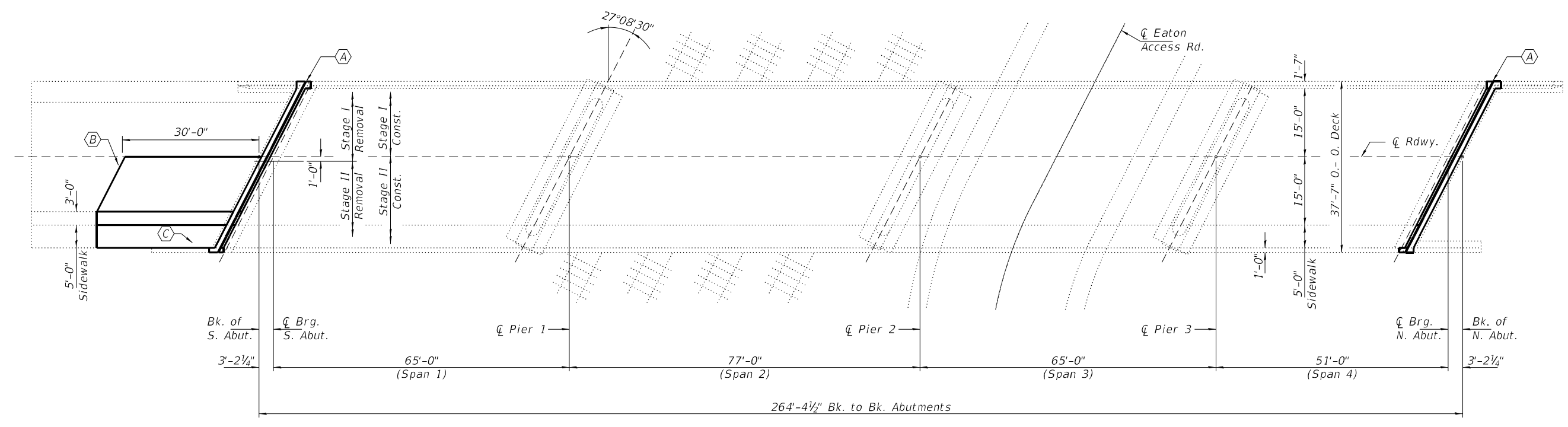
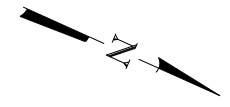
Joint openings shall be adjusted according to Article 520.04 of the Standard Specifications when the deck is poured at an ambient temperature other than 50° F.

Traffic will be maintained using stage construction.

The contractor shall use extreme care during concrete removal so as not to damage the PPC I-beams.



**ELEVATION**



**PLAN**

- (A) - Remove and replace expansion joints with new Preformed Joint Strip Seals at abutments.
- (B) - Remove and replace Approach Slab (removal to be done under Stage II Removal).
- (C) - Remove and replace Approach Pavement Shoulder and Sidewalk Section (for picture of damage see sheet 7 of 12).

**BILL OF MATERIAL**

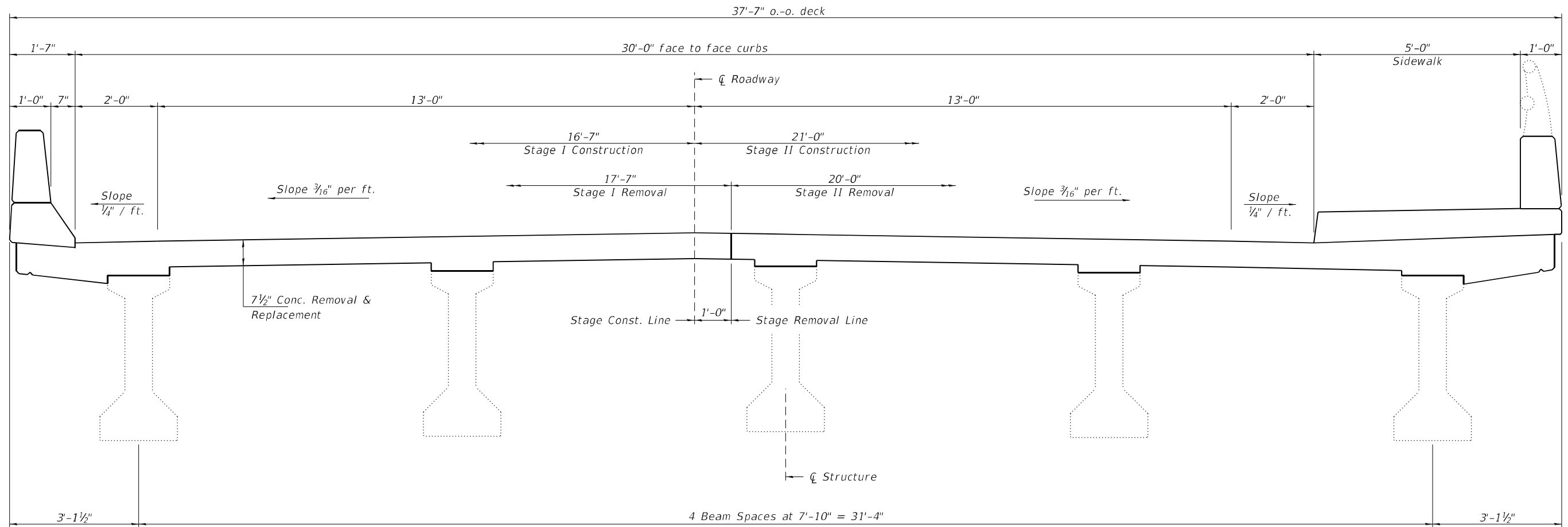
ITEM	UNIT	QUANTITY
Concrete Removal	Cu. Yd.	15.3
Concrete Superstructure	Cu. Yd.	15.3
Approach Slab Removal	Sq. Yd.	43.3
Concrete Superstructure (Approach Slab)	Cu. Yd.	18.9
Preformed Joint Strip Seal	Foot	84
Reinforcement Bars, Epoxy Coated	Pound	5880
Bar Splicers	Each	16
Protective Coat	Sq. Yd.	70
Sub-Base Granular Material, Type B	M Ton	20

\* Apply to new concrete only.



EXPIRES 11-30-2022

DESIGNED - Victor H. Veliz	EXAMINED - <i>Ting A. Duck</i> ENGINEER OF STRUCTURAL SERVICES	DATE - MARCH 16, 2021	<b>STATE OF ILLINOIS DEPARTMENT OF TRANSPORTATION</b>	<b>GENERAL PLAN AND ELEVATION IL 84 OVER SOO LINE RR/CITY STREET SN 008-0041</b>	F.A.P. RTE. 18	SECTION (105VB-3)BJR	COUNTY CARROLL	TOTAL SHEETS 22	SHEET NO. 11	
CHECKED - Jeffrey S. Burke	PASSED - <i>Sh. Carl Puzey</i> ENGINEER OF BRIDGES AND STRUCTURES	REVISED -			CONTRACT NO. 64P66					
DRAWN - Venkat Reddy		REVISED -			ILLINOIS FED. AID PROJECT					



**CROSS SECTION AT ABUTMENTS**  
(Looking North)

DESIGNED - VHV  
 CHECKED - JSB  
 DRAWN - Venkat Reddy  
 CHECKED - VHV JSB

EXAMINED  
*Timothy A. Daulton*  
 ENGINEER OF STRUCTURAL SERVICES  
 PASSED  
*Carl Ringer*  
 ENGINEER OF BRIDGES AND STRUCTURES

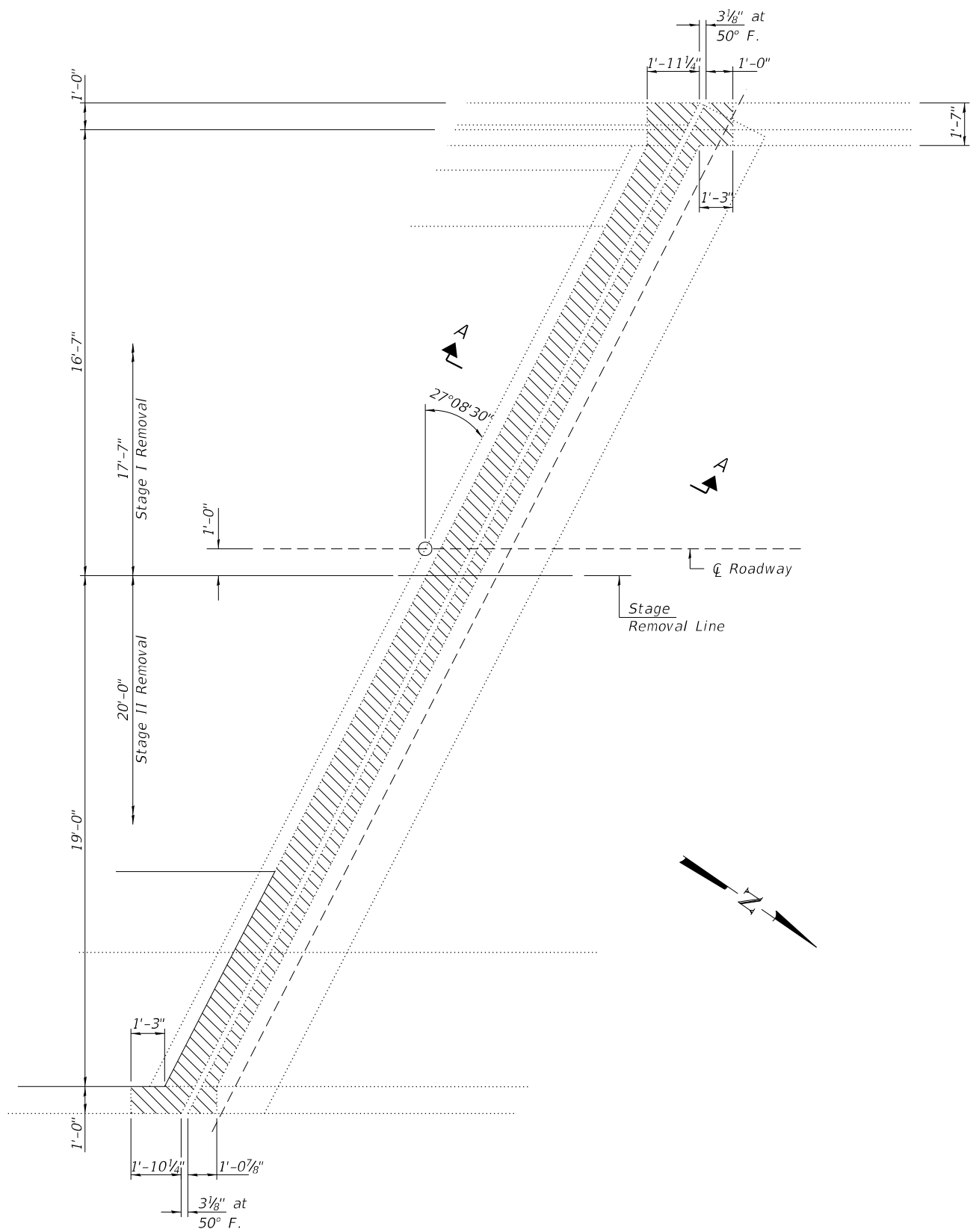
DATE - MARCH 16, 2021  
 REVISED -  
 REVISED -

**STATE OF ILLINOIS**  
**DEPARTMENT OF TRANSPORTATION**

**CROSS SECTION & STAGE CONSTRUCTION DETAILS**  
**SN 008 - 0041**

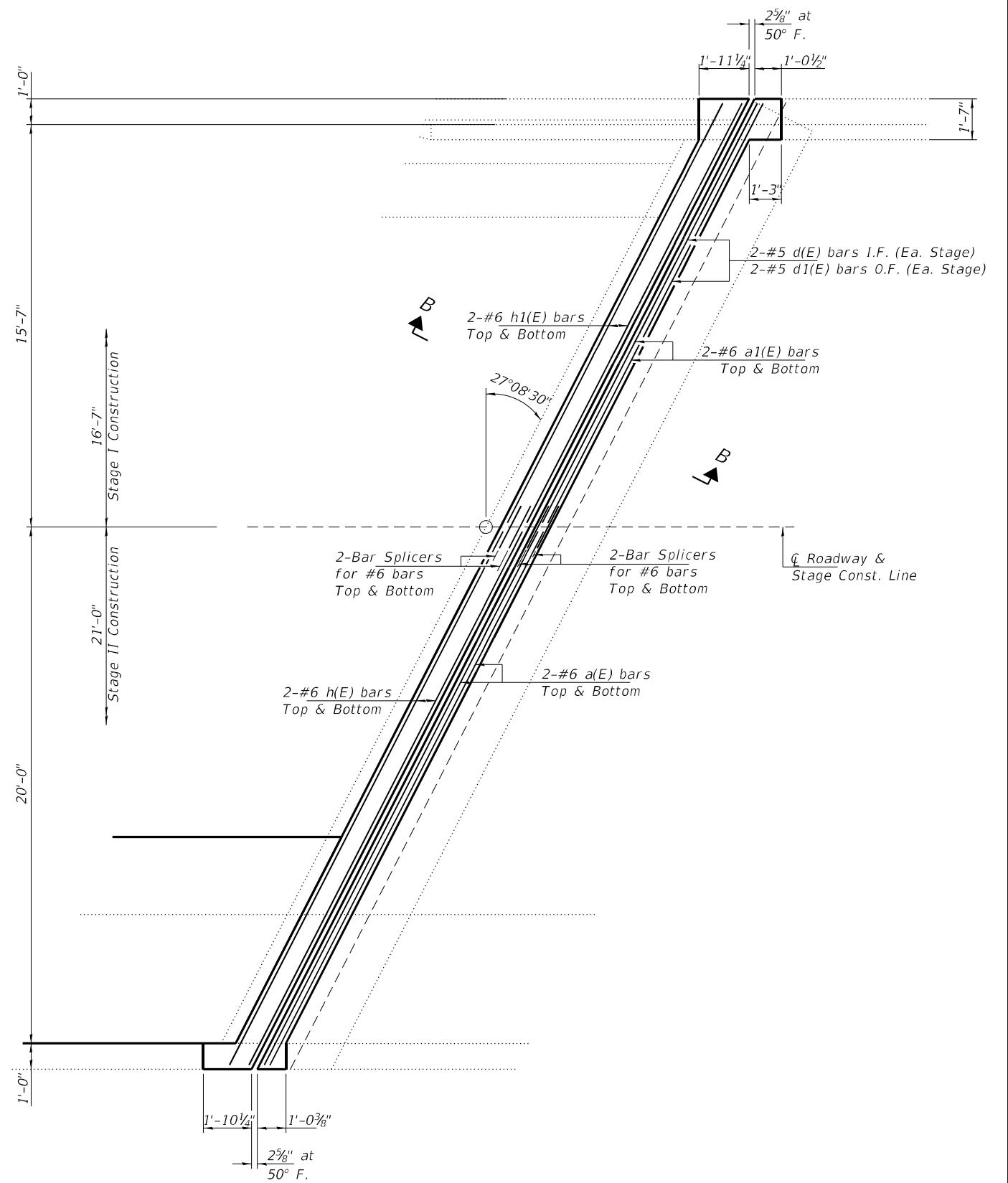
SHEET NO. 2 OF 12 SHEETS

F.A.P. RTE.	SECTION	COUNTY	TOTAL SHEETS	SHEET NO.
18	(105VB-3)BJR	CARROLL	22	12
CONTRACT NO. 64P66				
ILLINOIS FED. AID PROJECT				



**REMOVAL PLAN**  
S. Abut. Looking North

Note:  
See sheet 5 of 12 for Section A-A, B-B and Thru Bridge Parapet,  
Bill of Material and reinforcement bending diagrams.  
Hatched areas indicate Concrete Removal.



**REPLACEMENT PLAN**  
S. Abut. Looking North

DESIGNED - VHV  
CHECKED - JSB  
DRAWN - Venkat Reddy  
CHECKED - VHV JSB

EXAMINED  
PASSED  
Timothy A. [Signature]  
ENGINEER OF STRUCTURAL SERVICES  
[Signature]  
ENGINEER OF BRIDGES AND STRUCTURES

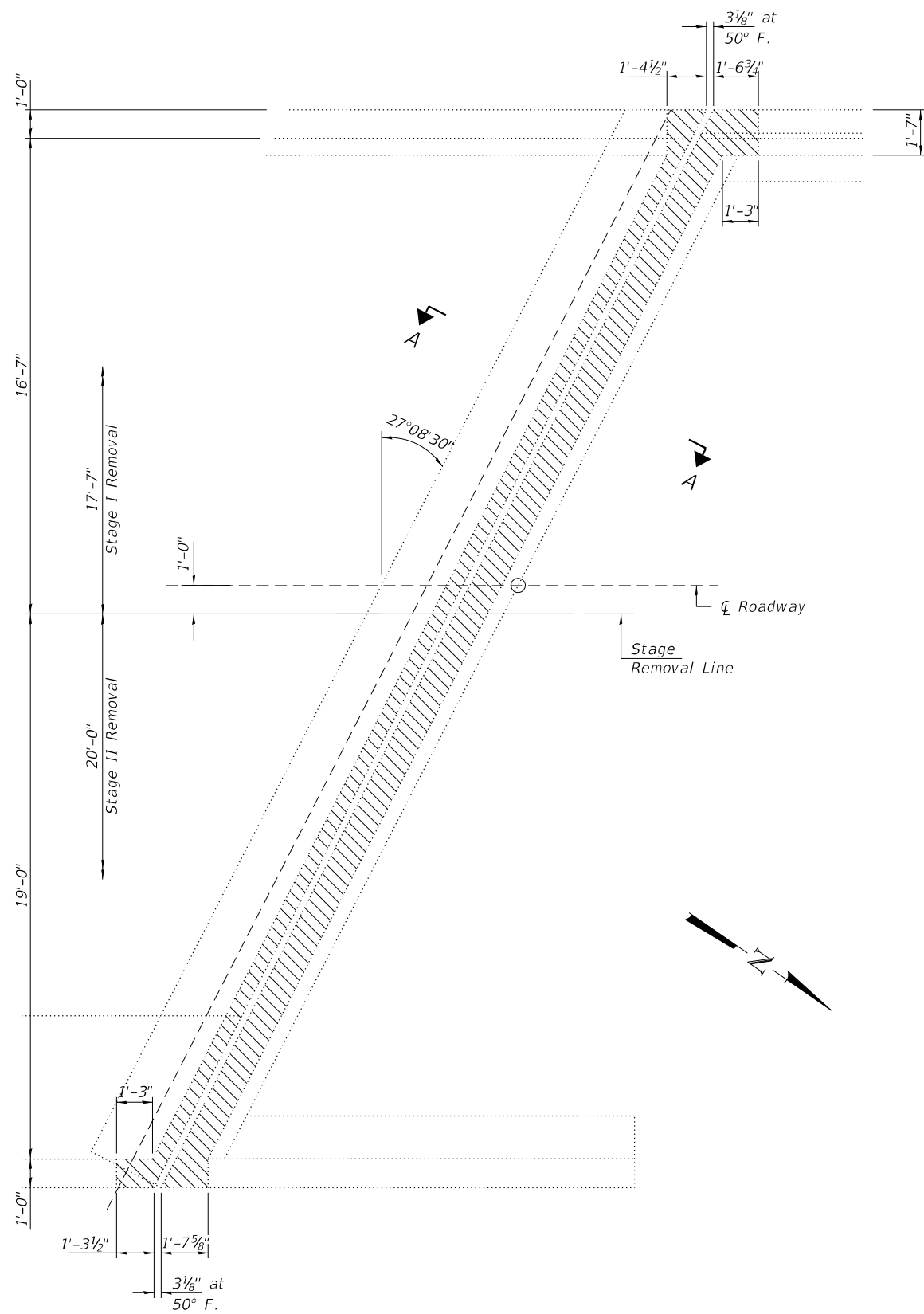
DATE - MARCH 16, 2021  
REVISED -  
REVISED -

STATE OF ILLINOIS  
DEPARTMENT OF TRANSPORTATION

S. ABUTMENT JOINT REPLACEMENT DETAILS  
SN 008 - 0041

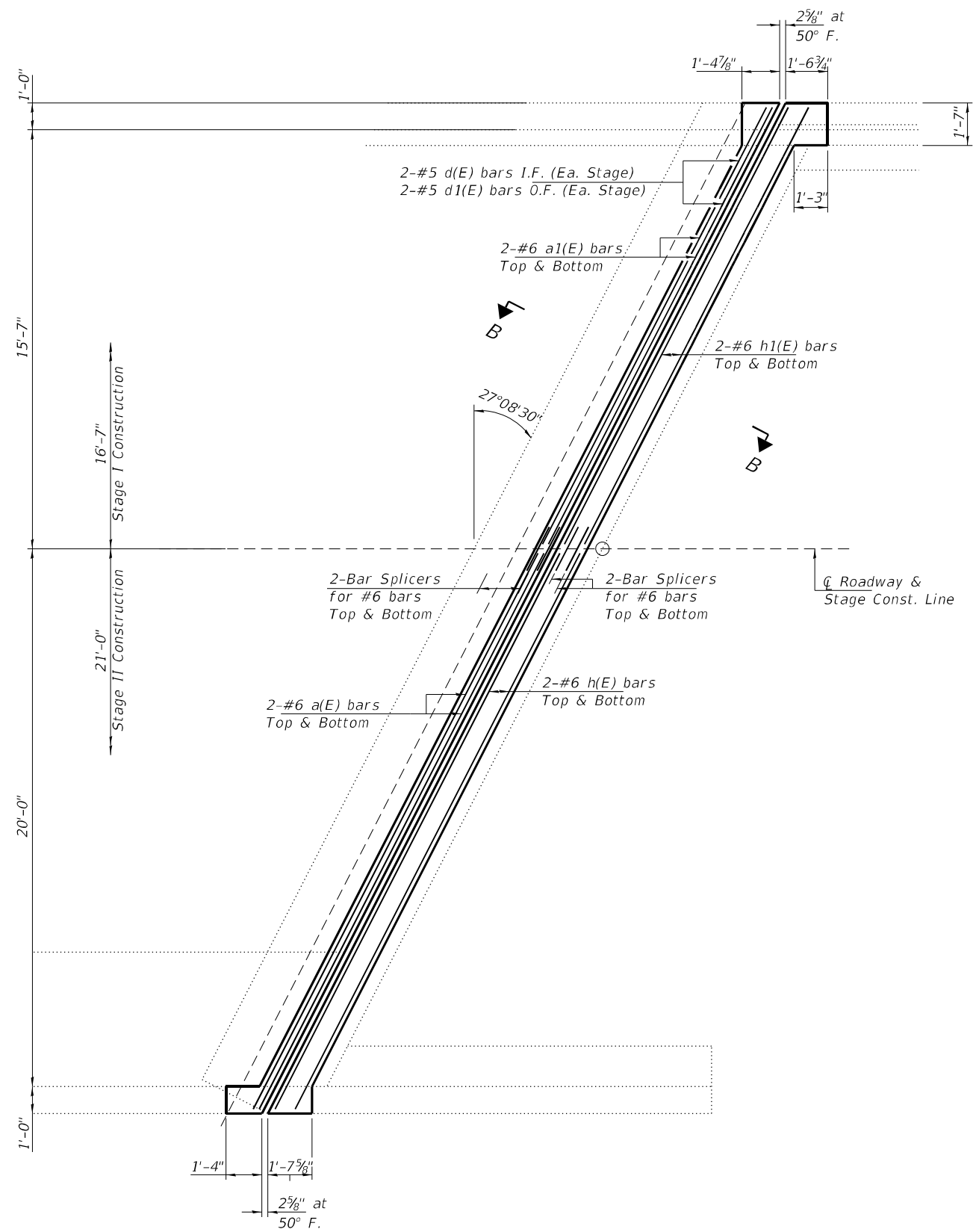
SHEET NO. 3 OF 12 SHEETS

F.A.P. RTE.	SECTION	COUNTY	TOTAL SHEETS	SHEET NO.
18	(105VB-3)BJR	CARROLL	22	13
CONTRACT NO. 64P66				
ILLINOIS FED. AID PROJECT				



**REMOVAL PLAN**  
N. Abut. Looking South

Note:  
See sheet 5 of 12 for Section A-A, B-B and Thru Bridge Parapet,  
Bill of Material and reinforcement bending diagrams.  
Hatched areas indicate Concrete Removal.



**REPLACEMENT PLAN**  
N. Abut. Looking South

DESIGNED - VHV  
CHECKED - JSB  
DRAWN - Venkat Reddy  
CHECKED - VHV JSB

EXAMINED  
PASSED  
Timothy A. Daulton  
ENGINEER OF STRUCTURAL SERVICES  
Carl R. Ringer  
ENGINEER OF BRIDGES AND STRUCTURES

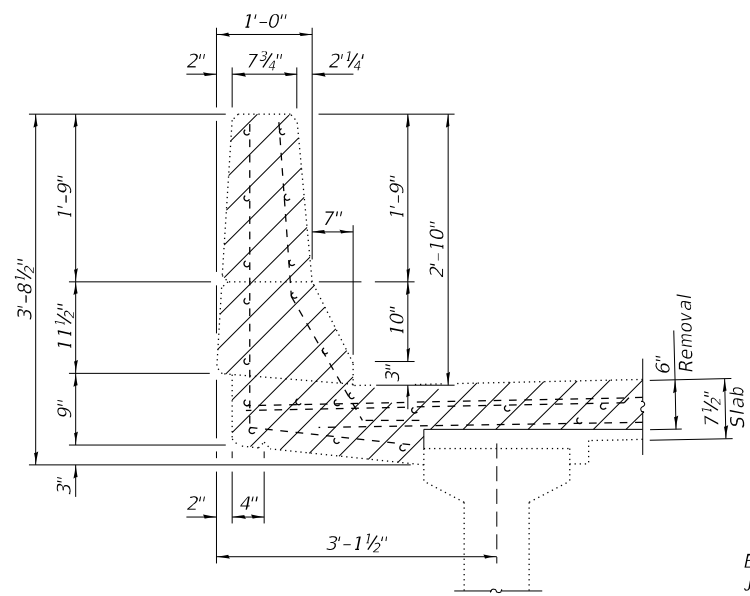
DATE - MARCH 16, 2021  
REVISED -  
REVISED -

STATE OF ILLINOIS  
DEPARTMENT OF TRANSPORTATION

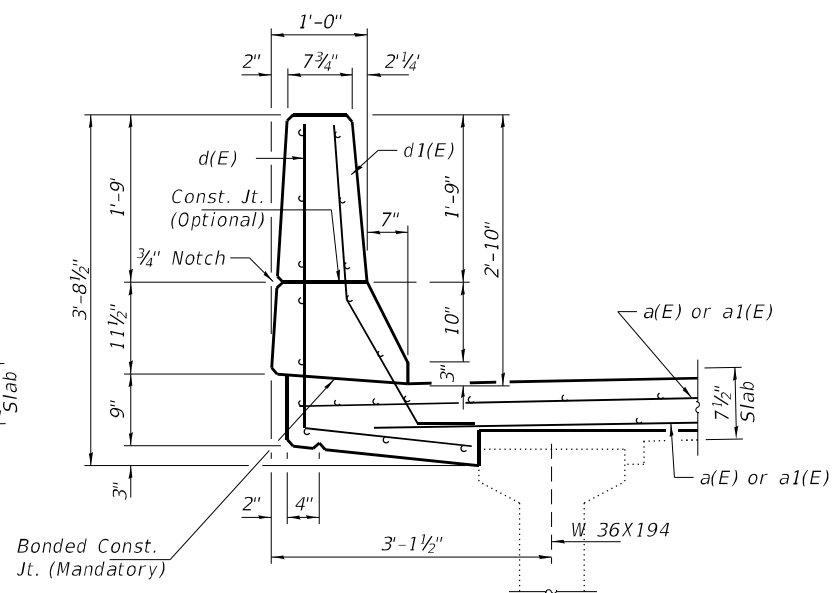
N. ABUTMENT JOINT REPLACEMENT DETAILS  
SN 008 - 0041

SHEET NO. 4 OF 12 SHEETS

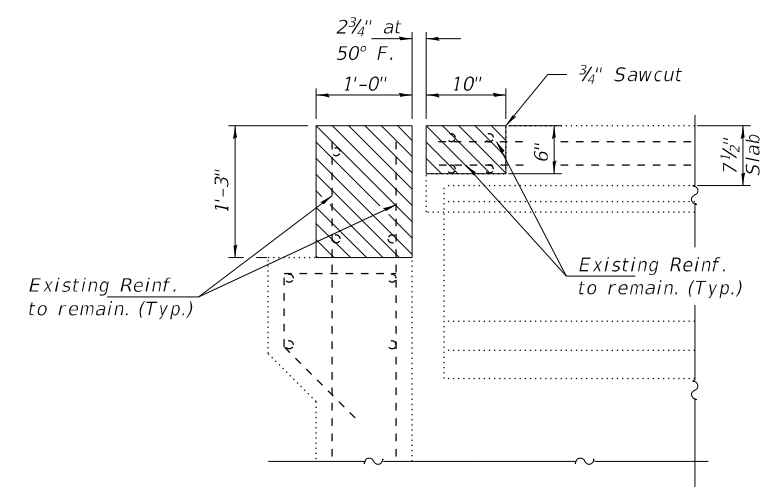
F.A.P. RTE.	SECTION	COUNTY	TOTAL SHEETS	SHEET NO.
18	(105VB-3)BJR	CARROLL	22	14
CONTRACT NO. 64P66				
ILLINOIS FED. AID PROJECT				



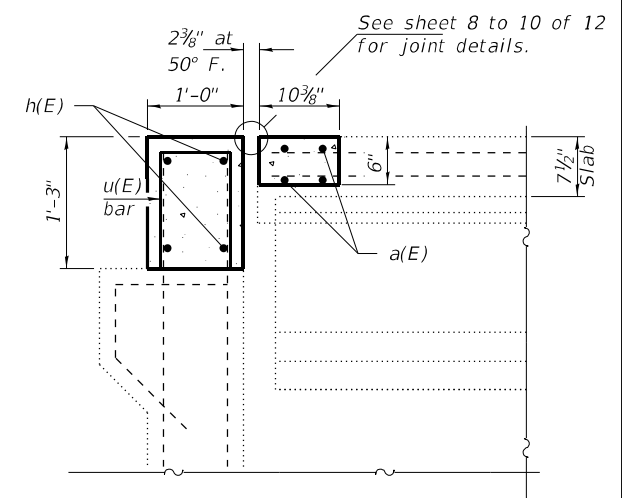
**REMOVAL**



**REPLACEMENT**

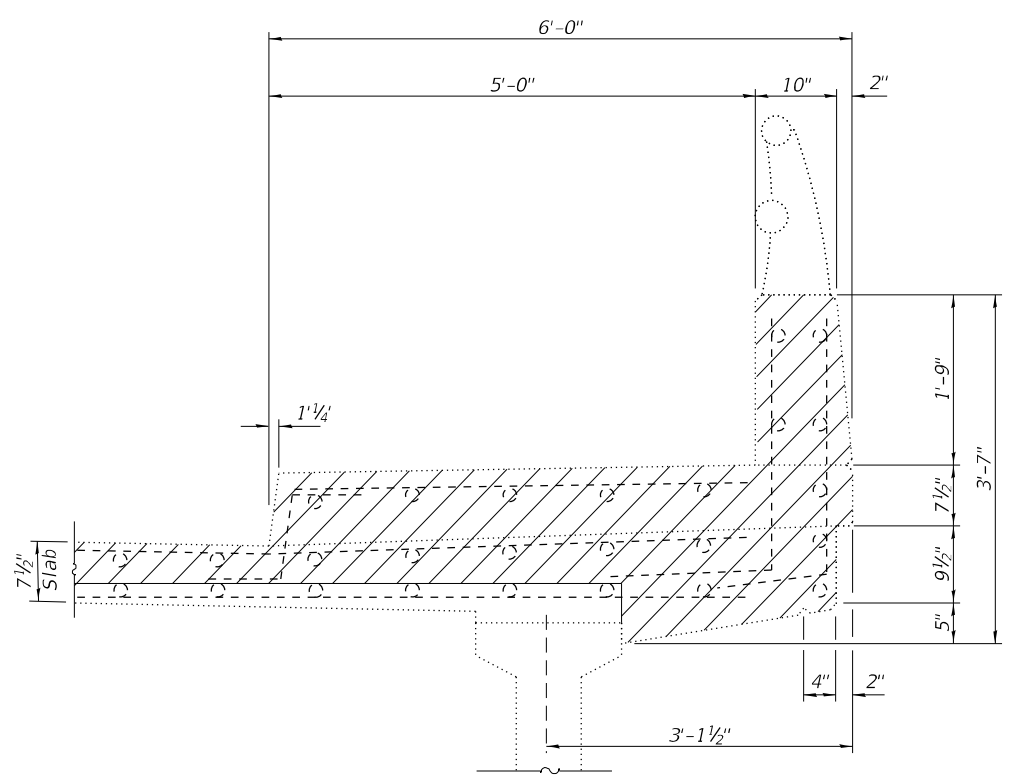


**SECTION A-A**

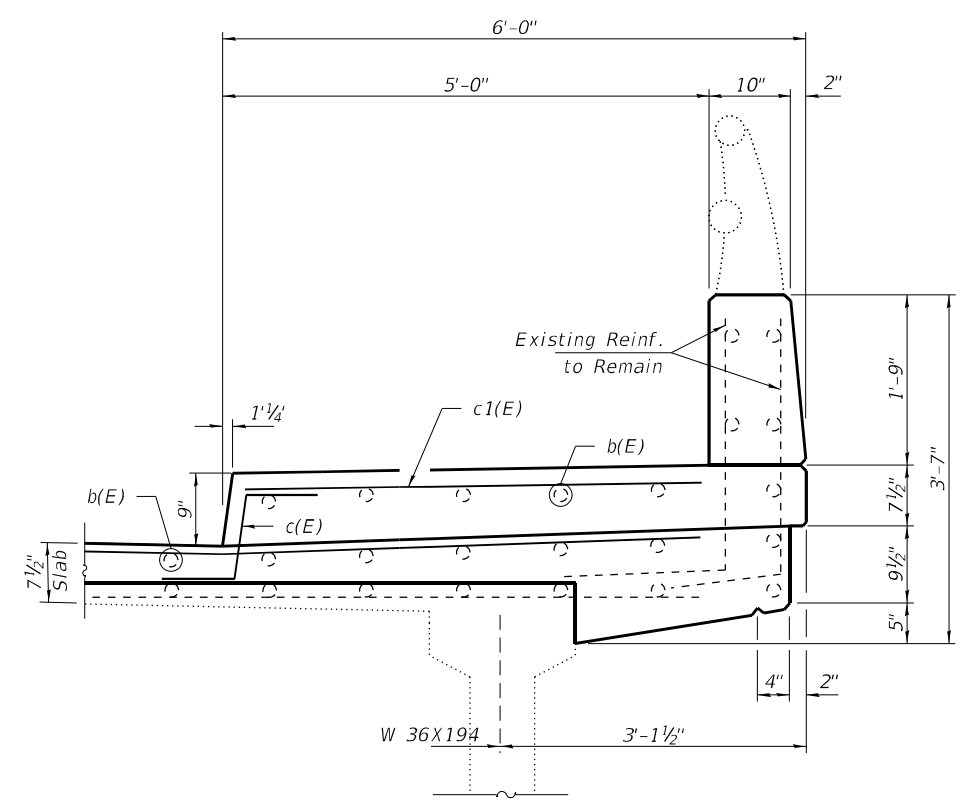


**SECTION B-B**

**SECTION THRU WEST SIDE BRIDGE PARAPET**

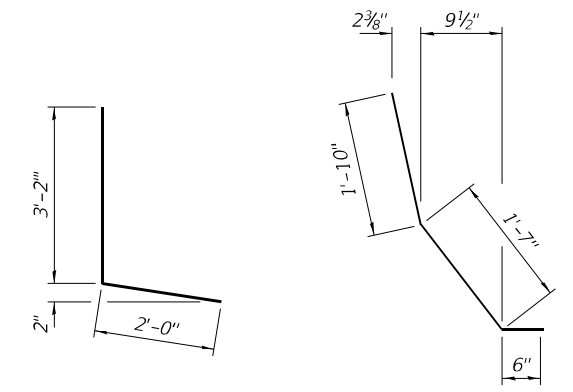


**REMOVAL**



**REPLACEMENT**

**SECTION THRU EAST SIDE BRIDGE PARAPET WITH SIDEWALK**



**BAR d(E)**

**BAR d1(E)**

**BILL OF MATERIAL (TWO ABUTMENTS)**

Bar	No.	Size	Length	Shape
a(E)	8	#6	23'-4"	—
a1(E)	8	#6	18'-5"	—
d(E)	4	#4	5'-2"	L
d1(E)	4	#5	3'-11"	L
c(E)	2	#5	2'-5"	L
c1(E)	2	#5	5'-8"	—
h(E)	8	#6	23'-4"	—
h1(E)	8	#6	18'-5"	—
Concrete Removal			Cu. Yd.	7
Concrete Superstructure			Cu. Yd.	7
Bar Splicers			Each	16
Reinforcement Bars, Epoxy Coated			Pound	1050

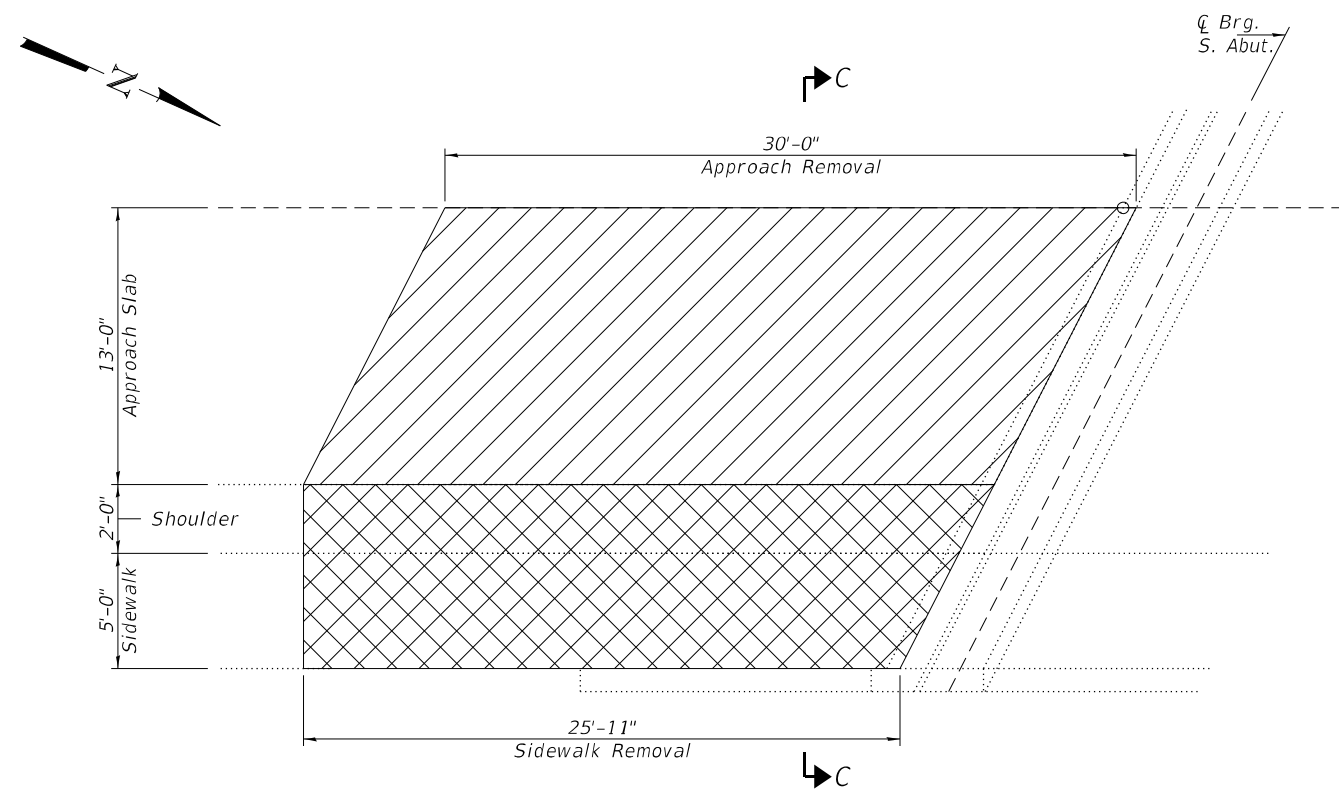
DESIGNED - VHV	EXAMINED - <i>Timothy A. Daulton</i>	DATE - MARCH 16, 2021
CHECKED - JSB	ENGINEER OF STRUCTURAL SERVICES	
DRAWN - Venkat Reddy	PASSED - <i>Carl Ringer</i>	REVISER -
CHECKED - VHV JSB	ENGINEER OF BRIDGES AND STRUCTURES	REVISER -

**STATE OF ILLINOIS  
DEPARTMENT OF TRANSPORTATION**

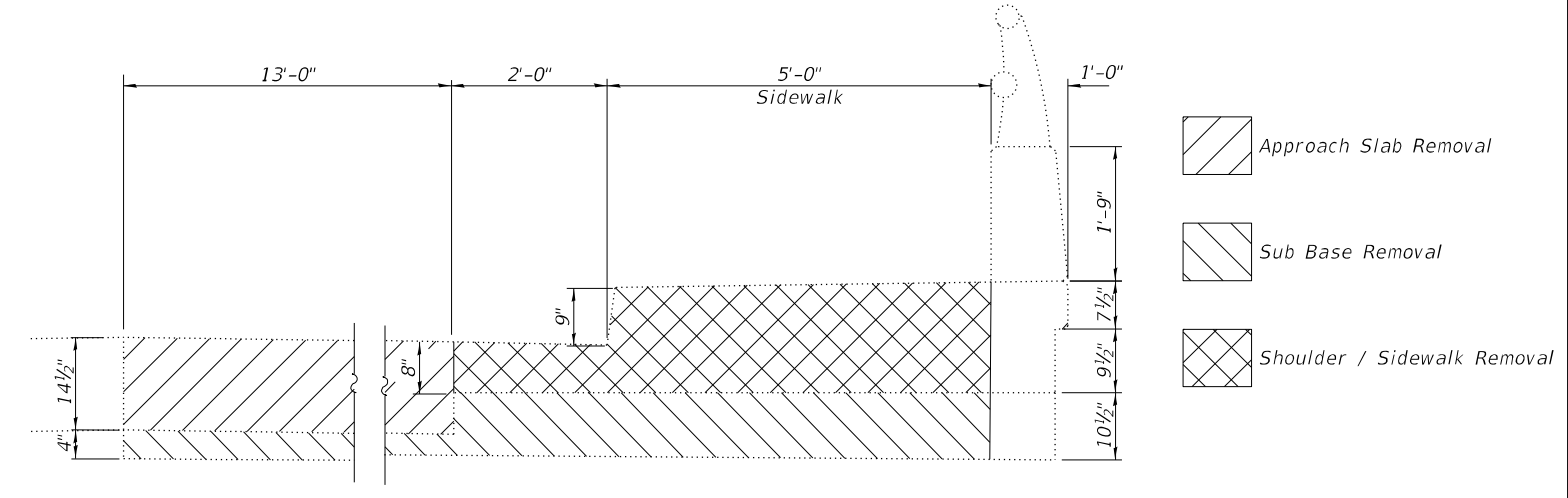
**JOINT REPLACEMENT DETAILS  
SN 008 - 0041**

SHEET NO. 5 OF 12 SHEETS

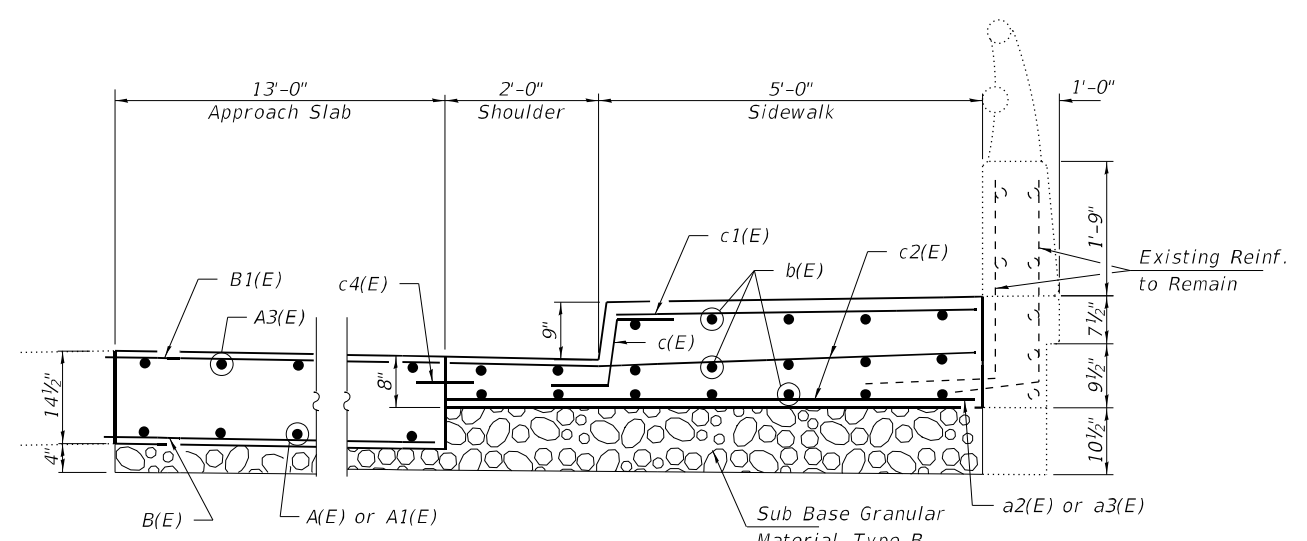
F.A.P. RTE.	SECTION	COUNTY	TOTAL SHEETS	SHEET NO.
18	(105VB-3)BJR	CARROLL	22	15
CONTRACT NO. 64P66			ILLINOIS FED. AID PROJECT	



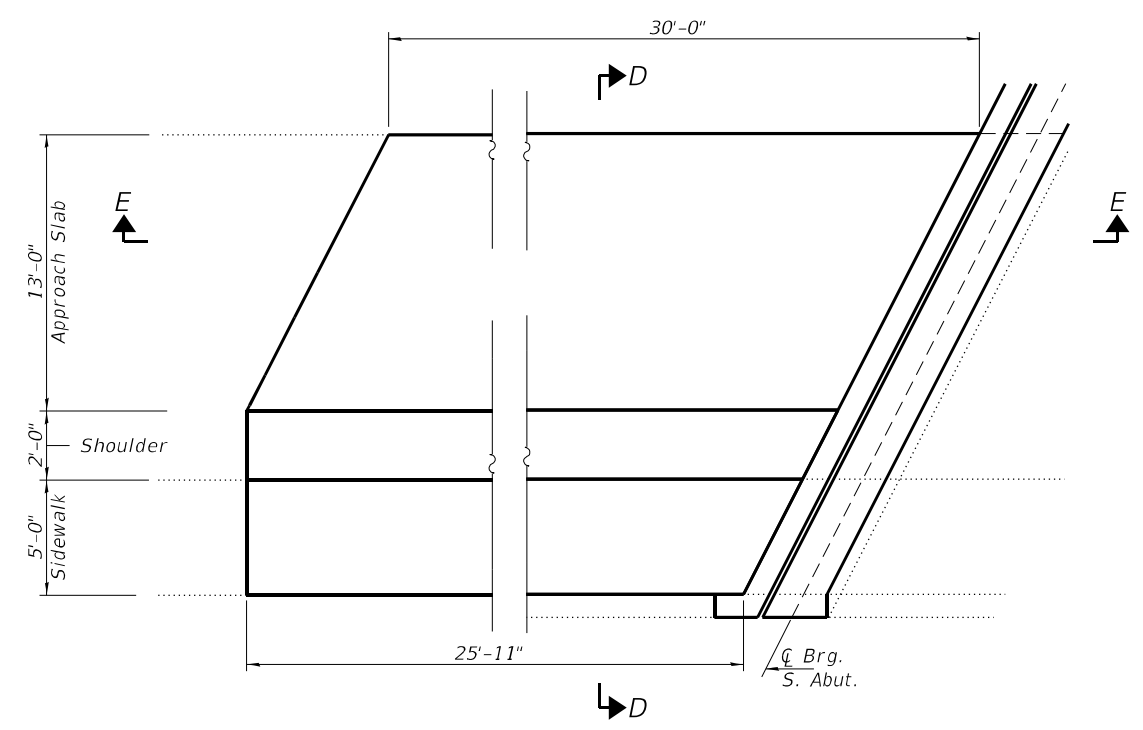
**SIDEWALK APPROACH SHOULDER AND APPROACH SLAB REMOVAL**



**SECTION C-C**

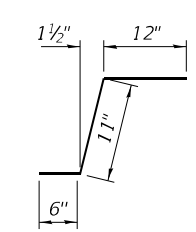


**SECTION D-D**



**SIDEWALK/APPROACH SHOULDER AND APPROACH SLAB REPLACEMENT**

For reinforcement details, see Partial Plan of Approach Slab on Sheet 7 of 12.  
For section E-E see sheet 7 of 12



**BAR c(E)**

**BILL OF MATERIAL (SOUTH APPROACH)**

Bar	No.	Size	Length	Shape	
A(E)	13	#9	27'-0"		
A1(E)	13	#9	20'-3"		
A2(E)	13	#5	8'-0"		
A3(E)	13	#5	29'-8"		
A4(E)	13	#5	4'-0"		
B(E)	40	#5	14'-5"		
B1(E)	30	#5	14'-4"		
b(E)	19	#5	28'-6"		
c(E)	27	#5	2'-5"		
c1(E)	28	#5	4'-8"		
c2(E)	28	#5	6'-8"		
c3(E)	12	#5	3'-0"		
c4(E)	30	#5	4'-0"		
* Concrete Removal				Cu. Yd.	8.3
* Concrete Superstructure				Cu. Yd.	8.3
Approach Slab Removal				Sq. Yd.	43.3
Concrete Superstructure (Approach Slab)				Cu. Yd.	18.9
Sub Base Granular Material, Type B				Tons	22
Reinforcement Bars, Epoxy Coated				Pound	4830

\* Includes Sidewalk and Shoulder

DESIGNED - VHV	EXAMINED - <i>Timothy A. Daulton</i>	DATE - MARCH 16, 2021
CHECKED - JSB	ENGINEER OF STRUCTURAL SERVICES	
DRAWN - Venkat Reddy	PASSED - <i>Carl Rieger</i>	REVISER -
CHECKED - VHV JSB	ENGINEER OF BRIDGES AND STRUCTURES	REVISER -

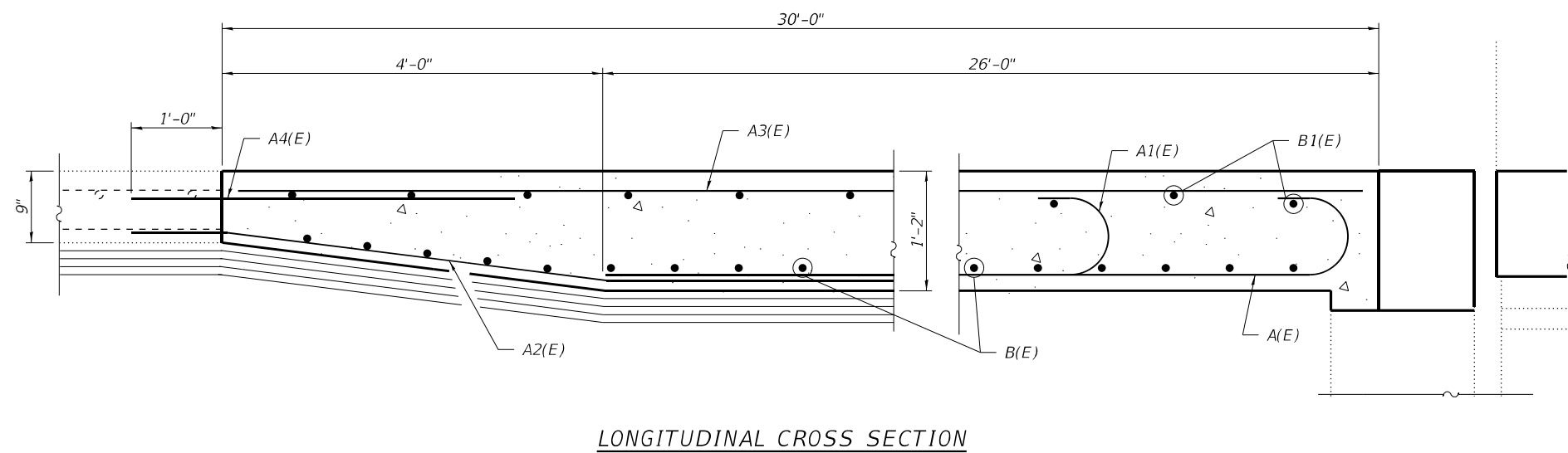
STATE OF ILLINOIS  
DEPARTMENT OF TRANSPORTATION

SHOULDER & SIDEWALK REMOVAL & REPLACEMENT DETAILS  
SN 008-0041

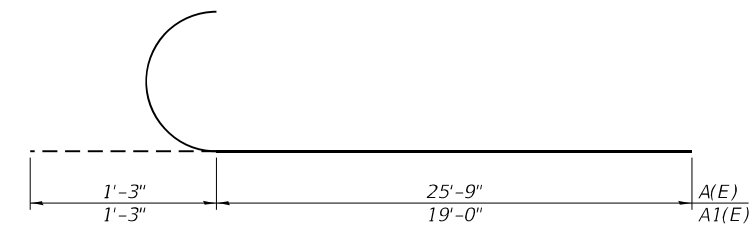
SHEET NO. 6 OF 12 SHEETS

F.A.P. RTE.	SECTION	COUNTY	TOTAL SHEETS	SHEET NO.
18	(105VB-3)BJR	CARROLL	22	16
CONTRACT NO. 64P66				
ILLINOIS FED. AID PROJECT				

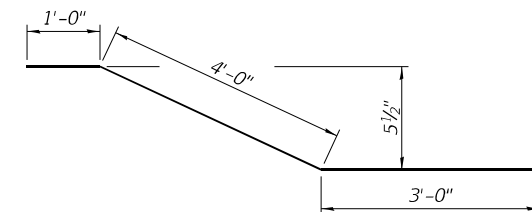




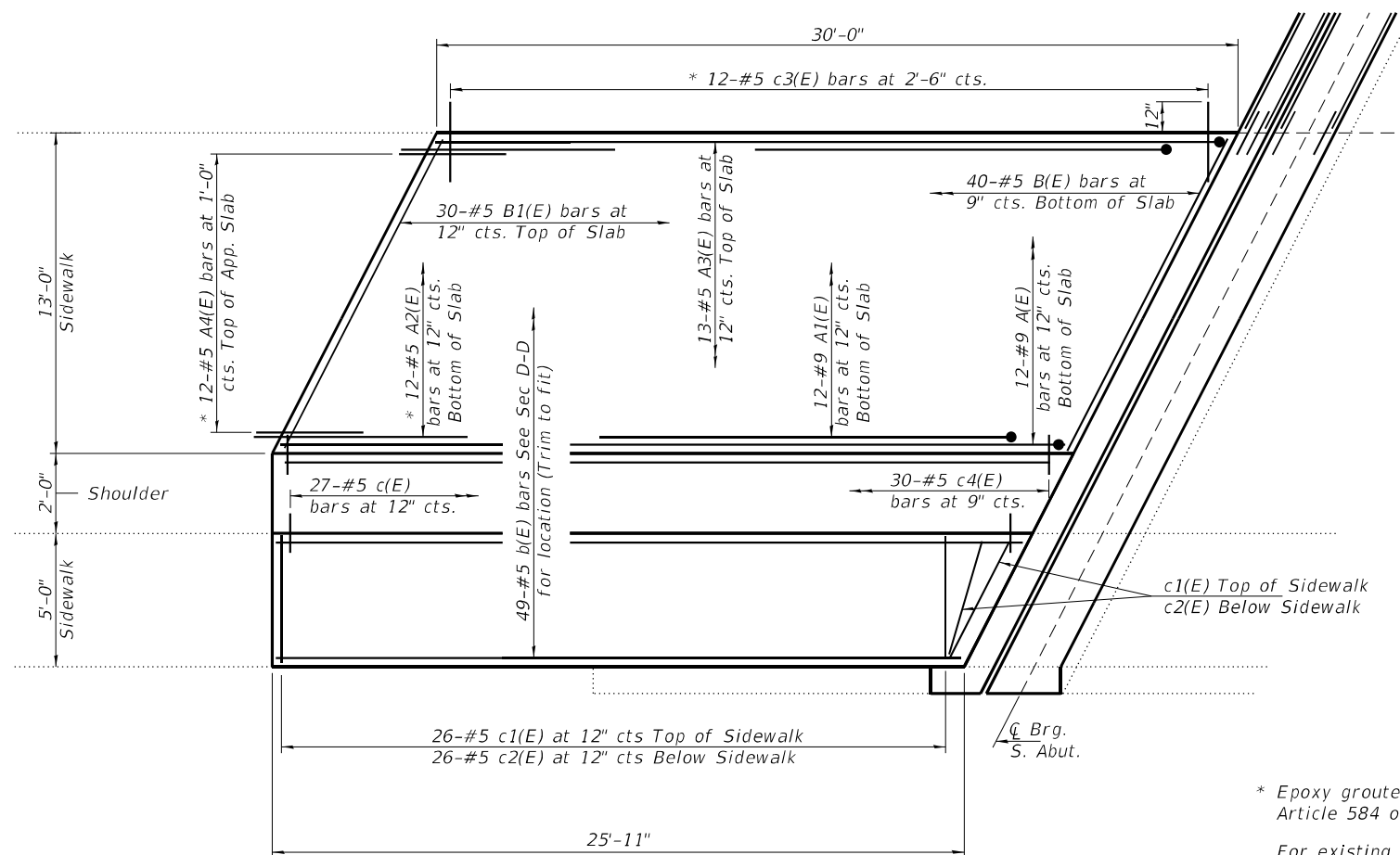
LONGITUDINAL CROSS SECTION



A(E) & A1(E) BARS



A2(E) BAR



PARTIAL PLAN OF APPROACH SLAB



SOUTH EAST APPROACH DAMAGE

\* Epoxy grouted bars A2(E) & A4(E) and C3(E) accordance with Article 584 of the Standard Specifications.

For existing plans of approach pavement see sheet 12 of 12

Reinforcement and Concrete Superstructure (Approach Slab) are included in the Bill of Material on Sheet 6 of 12.

DESIGNED - VHV  
 CHECKED - JSB  
 DRAWN - Venkat Reddy  
 CHECKED - VHV JSB

EXAMINED  
 PASSED  
 ENGINEER OF STRUCTURAL SERVICES  
 ENGINEER OF BRIDGES AND STRUCTURES

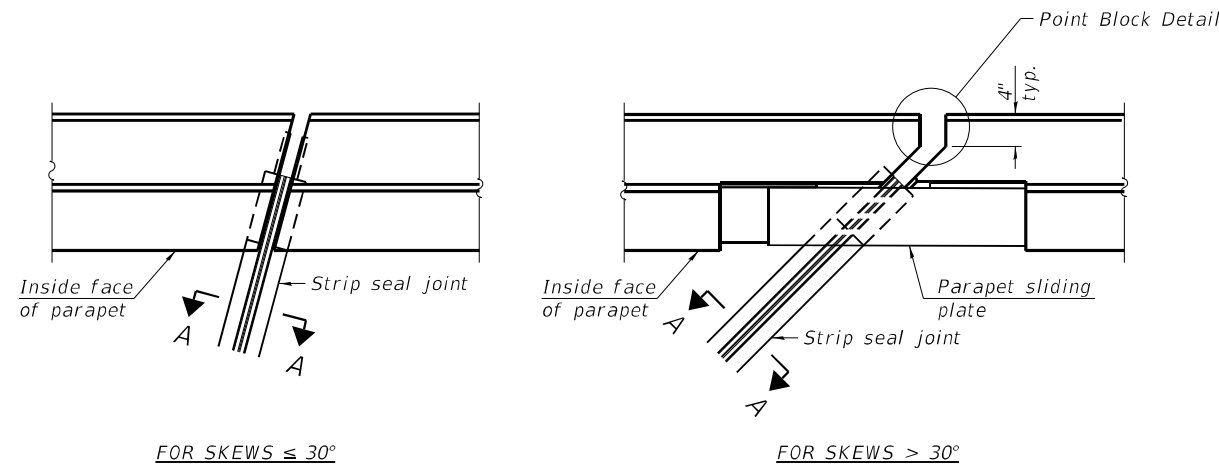
DATE - MARCH 16, 2021  
 REVISED -  
 REVISED -

STATE OF ILLINOIS  
 DEPARTMENT OF TRANSPORTATION

APPROACH SLAB REPAIRS  
 SN 008 - 0041

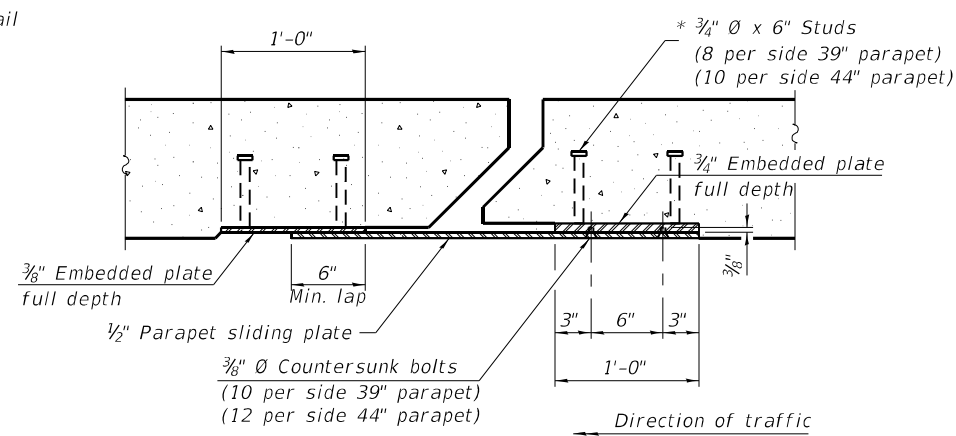
SHEET NO. 7 OF 12 SHEETS

F.A.P. RTE.	SECTION	COUNTY	TOTAL SHEETS	SHEET NO.
18	(105VB-3)BJR	CARROLL	22	17
CONTRACT NO. 64P66				
ILLINOIS FED. AID PROJECT				



FOR SKEWS  $\leq 30^\circ$

PLAN AT PARAPET



SECTION B-B

Notes:

The strip seal shall be made continuous and shall have a minimum thickness of  $\frac{1}{4}$ ". The configuration of the strip seal shall match the configuration of the locking edge rails. Open or "webbed" strip seal gland configurations are not permitted. The gland shall be sized for a maximum rated movement of 4 inches.

The locking edge rails depicted are configured for typical applications and are conceptual only. The actual configuration of the locking edge rails and matching strip seal may vary from manufacturer to manufacturer provided they fit the application and meet the minimum anchorage shown. Flanged edge rails, however, will not be allowed. Locking edge rails may exceed the  $4\frac{1}{2}$ " maximum depth provided the anchorage system is revised according to the manufacturer's recommendation.

The manufacturer's recommended installation methods shall be followed.

All steel components shall be galvanized after fabrication according to Article 520.03 of the Standard Specifications.

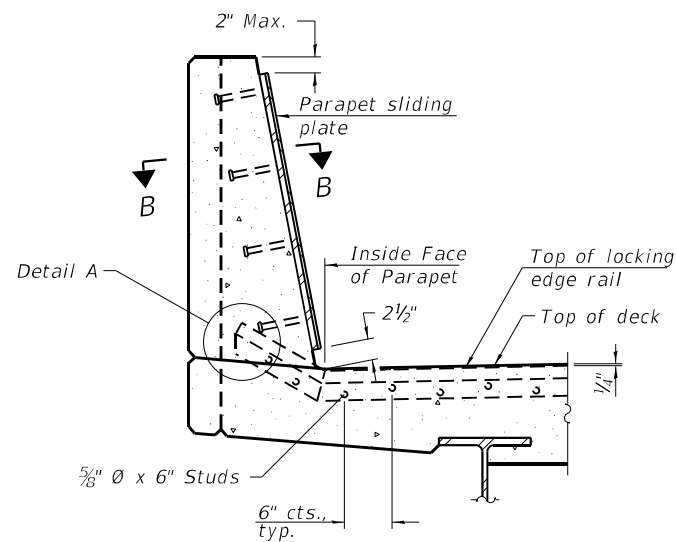
The Maximum space between locking edge rail segments shall be  $\frac{3}{16}$ " and sealed with a suitable sealant; however, any rail joint within 10' measured perpendicular to the face of the curb or parapet shall be welded as shown in the locking edge rail splice detail.

The top surface of sidewalk sliding plates shall have a raised pattern according to ASTM A786.

Cost of parapet sliding plates, sidewalk sliding plates, embedded plates, anchorage studs, and expansion anchors included with Preformed Joint Strip Seal.

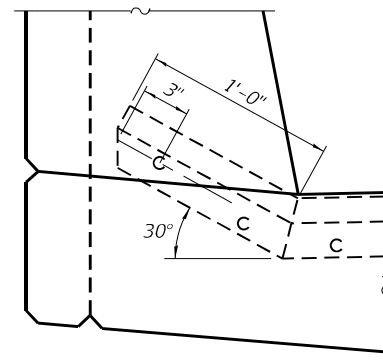
39" constant slope barrier shown, 44" constant slope barrier similar as noted.

The concrete opening below the strip seal will vary based on the locking edge rail chosen by the Contractor. Deck and parapet lengths shown elsewhere in the plans are dimensioned to the concrete opening, not the joint opening, and are based on the rolled locking edge rail. If the Contractor elects to use a different locking edge rail, dimensional adjustments may be required. One exception to this would be the strip seal joint at the end of the precast bridge approach slab. For these cases the pavement connector length shall be adjusted, not the length of the bridge approach slab.

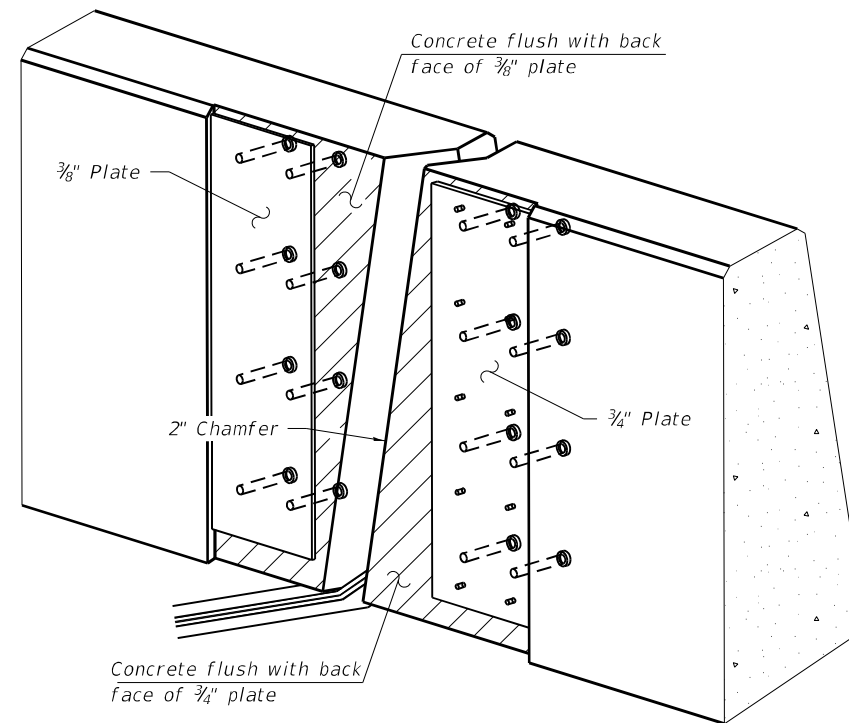


SECTION AT PARAPET

(Skews > 30° shown. Skews  $\leq 30^\circ$  similar except as shown in plan view.)

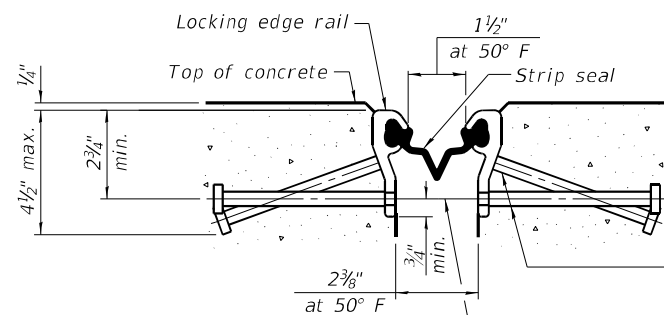


DETAIL A



TRIMETRIC VIEW

(Showing embedded plates only)



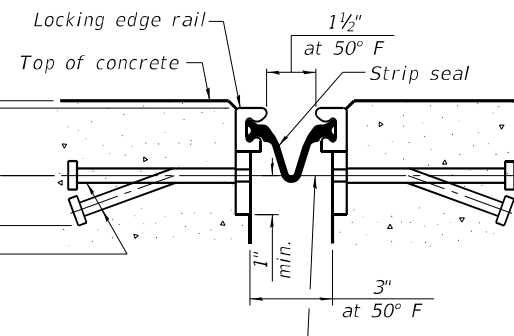
SHOWING ROLLED RAIL JOINT

\*  $\frac{3}{8}$ "  $\phi$  x 6" studs @ 6" cts. (alternate angled/bent studs with horizontal studs)

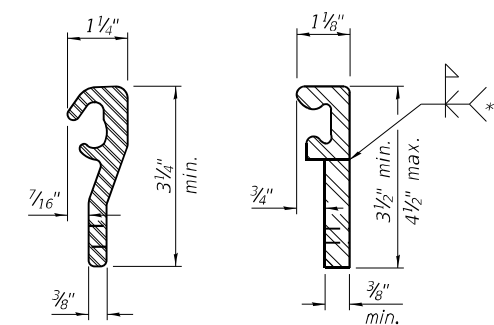
$\frac{3}{8}$ "  $\phi$  threaded rods in  $\frac{1}{16}$ "  $\phi$  holes at  $\pm 4'-0"$  cts. for holding the proper joint opening based on the temperature during the deck pour. Place to miss studs. All rods shall be burned, or sawed off flush with the plates after concrete is set.

SECTION A-A

\* Granular or solid flux filled headed studs conforming to Article 1006.32 of the Std. Specs., automatically end welded.



SHOWING WELDED RAIL JOINT

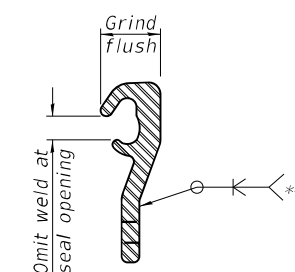


ROLLED (EXTRUDED) RAIL

WELDED RAIL

LOCKING EDGE RAILS

\*\* Back gouge not required if complete joint penetration is verified by mock-up.



LOCKING EDGE RAIL SPLICE

The inside of the locking edge rail groove shall be free of weld residue. Rolled rail shown, welded rail similar.

BILL OF MATERIAL

Item	Unit	Total
Preformed Joint Strip Seal	Foot	84

EJ-SS-S

1-1-2020

DESIGNED - VHV	CHECKED - JSB
DRAWN - Venkat Reddy	CHECKED - VHV JSB

EXAMINED	Timothy A. Daulton ENGINEER OF STRUCTURAL SERVICES
PASSED	Carl R. Roper ENGINEER OF BRIDGES AND STRUCTURES

DATE - MARCH 16, 2021

REVISED -
REVISED -

STATE OF ILLINOIS  
DEPARTMENT OF TRANSPORTATION

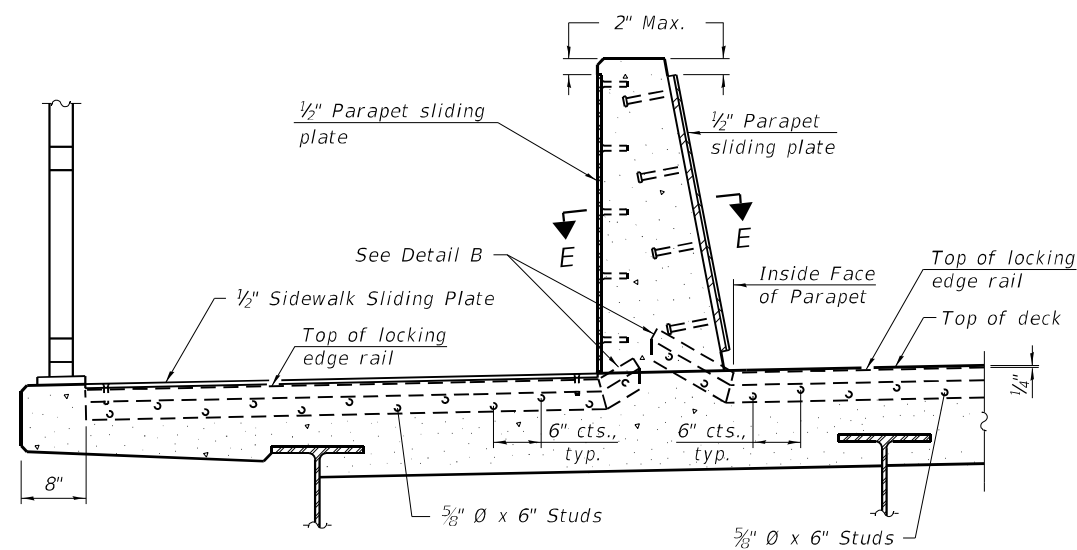
(Sheet 1 of 3)

PREFORMED JOINT STRIP SEAL - SIDEWALK  
SN 008 - 0041

SHEET NO. 8 OF 12 SHEETS

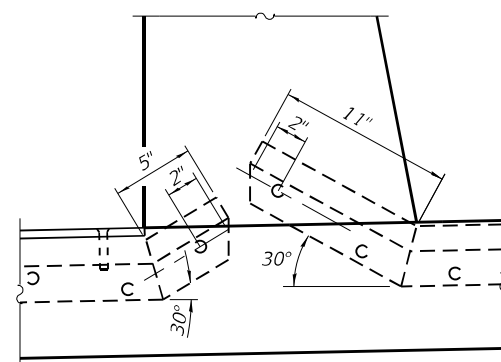
F.A.P. RTE.	SECTION	COUNTY	TOTAL SHEETS	SHEET NO.
18	(105VB-3)BJR	CARROLL	22	18
CONTRACT NO. 64P66				
ILLINOIS FED. AID PROJECT				



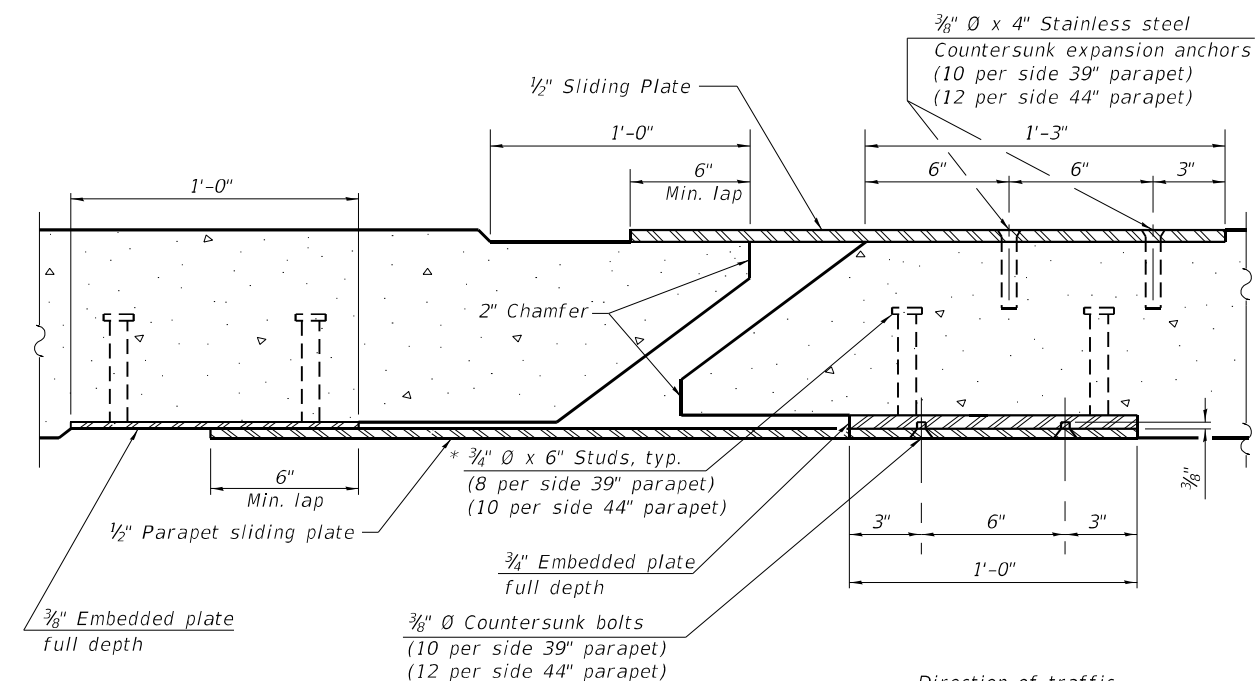


**SECTION AT DECK LEVEL SIDEWALK**

(Skews > 30° shown. Skews ≤ 30° similar except as shown in plan view.)

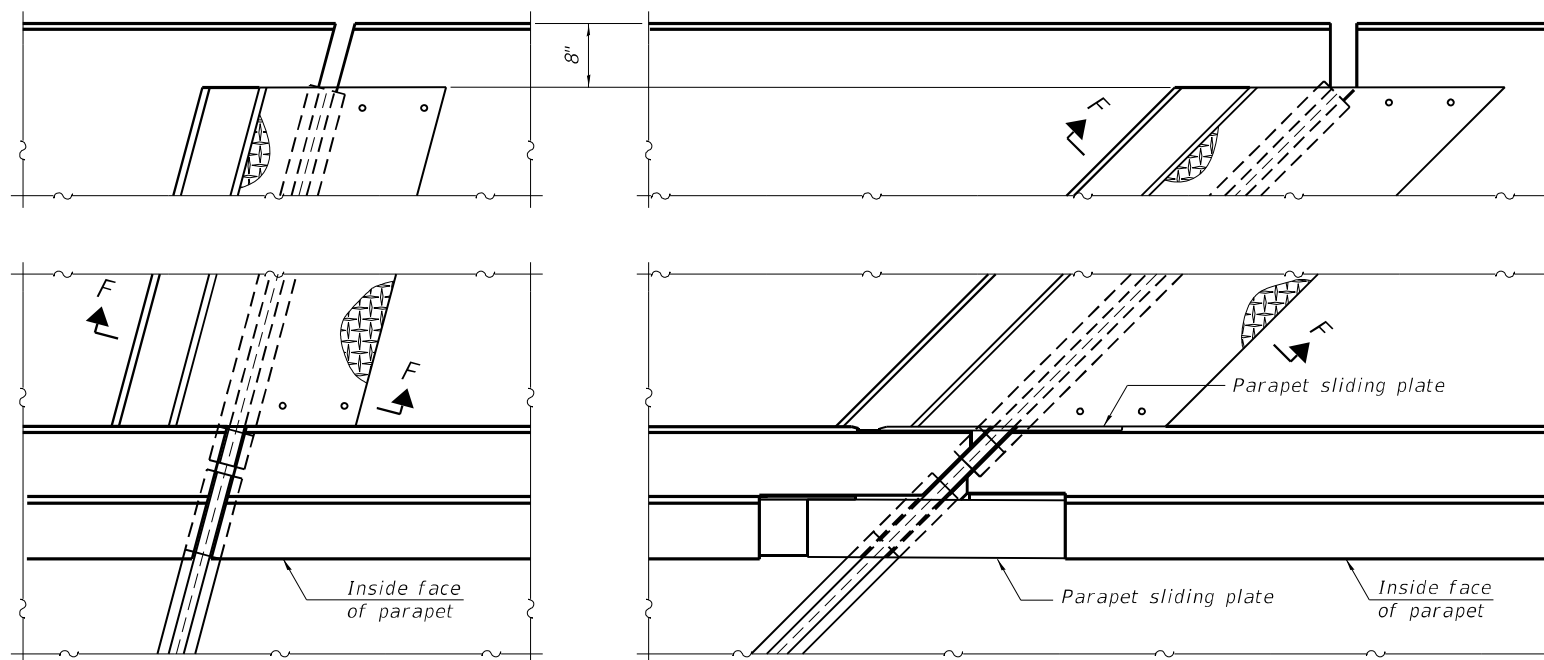


**DETAIL B**



**SECTION E-E**

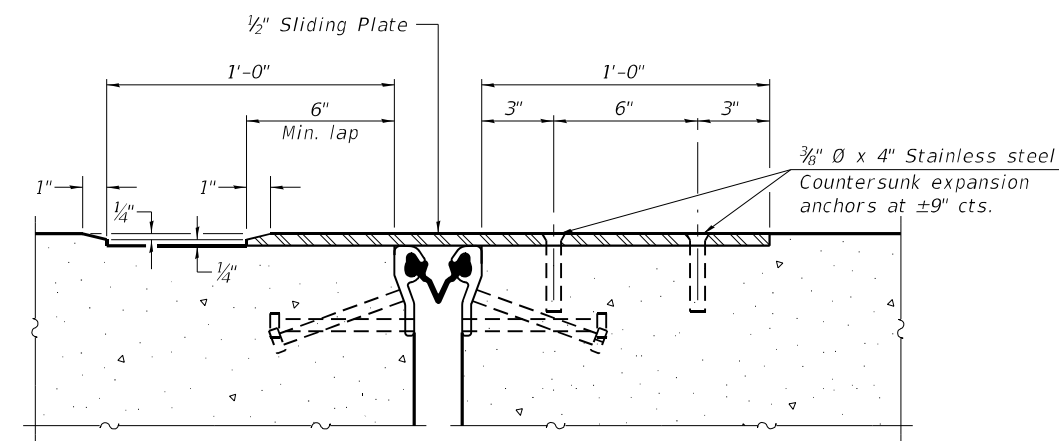
Direction of traffic



(FOR SKEWS ≤ 30°)

(FOR SKEWS > 30°)

**PLAN AT DECK LEVEL SIDEWALK**



**SECTION F-F**

EJ-SS-S

1-1-2020

(Sheet 3 of 3)

DESIGNED - VHV  
 CHECKED - JSB  
 DRAWN - Venkat Reddy  
 CHECKED - VHV JSB

EXAMINED  
 PASSED  
 Timothy A. Daulton  
 ENGINEER OF STRUCTURAL SERVICES  
 Carl R. Ringer  
 ENGINEER OF BRIDGES AND STRUCTURES

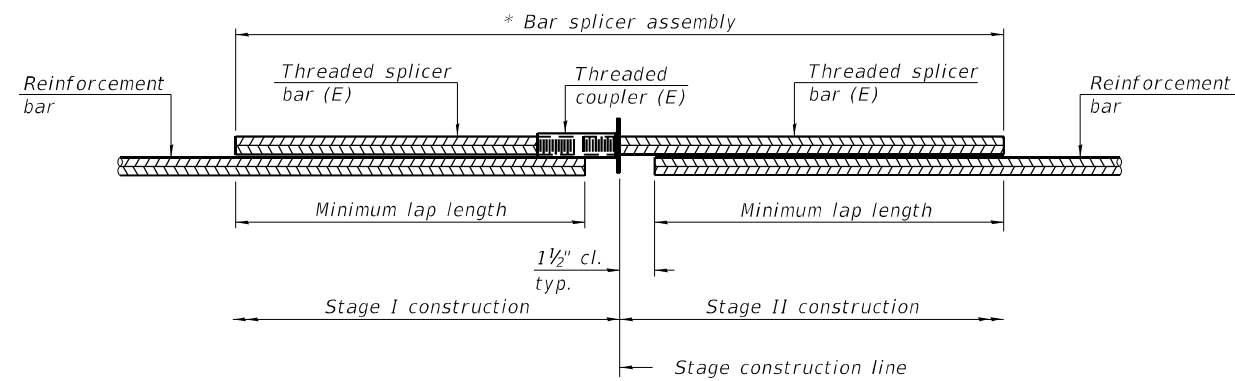
DATE - MARCH 16, 2021  
 REVISED -  
 REVISED -

STATE OF ILLINOIS  
 DEPARTMENT OF TRANSPORTATION

PREFORMED JOINT STRIP SEAL - SIDEWALK  
 SN 008-0041

SHEET NO. 10 OF 12 SHEETS

F.A.P. RTE.	SECTION	COUNTY	TOTAL SHEETS	SHEET NO.
18	(105VB-3)BJR	CARROLL	22	20
CONTRACT NO. 64P66				
ILLINOIS FED. AID PROJECT				



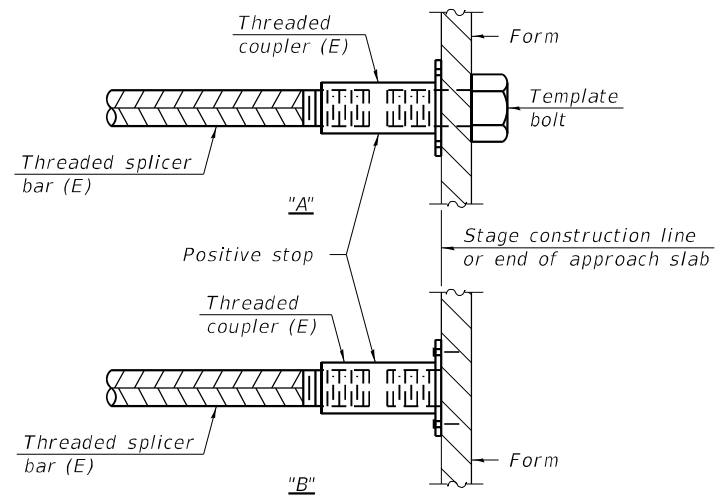
**STANDARD BAR SPLICER ASSEMBLY PLAN**

(All components shall be provided from one supplier)

Threaded splicer bar length = min. lap length + 1 1/2" + thread length

\* Epoxy not required on Bar Splicer Assembly components used in conjunction with black bars.

Location	Bar size	No. assemblies required	Minimum lap length
Deck	#6	8	3'-6"
Abutment	#6	8	3'-6"

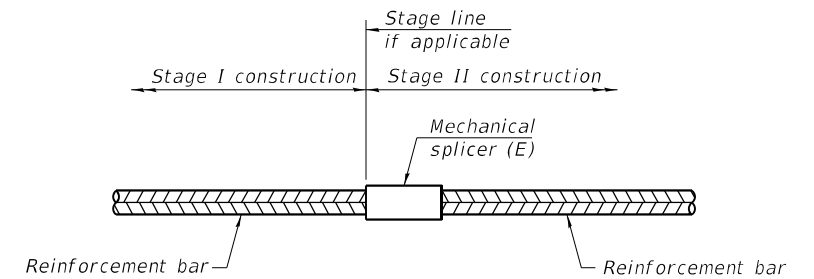


**INSTALLATION AND SETTING METHODS**

"A" : Set bar splicer assembly by means of a template bolt.

"B" : Set bar splicer assembly by nailing to wood forms or cementing to steel forms.

(E) : Indicates epoxy coating.



**STANDARD MECHANICAL SPLICER**

Location	Bar size	No. assemblies required

**Notes:**

Splicer bars shall be deformed with threaded ends and have a minimum 60 ksi yield strength.

All reinforcement shall be lapped and tied to the splicer bars.

Bar splicer assemblies shall be epoxy coated according to the requirements for reinforcement bars. See Section 508 of the Standard Specifications.

See approved list of bar splicer assemblies and mechanical splicers for alternatives.

BSD-1

1-1-2020

DESIGNED - VHV  
 CHECKED - JSB  
 DRAWN - Venkat Reddy  
 CHECKED - VHV JSB

EXAMINED  
 PASSED

Timothy A. [Signature]  
 ENGINEER OF STRUCTURAL SERVICES  
 [Signature]  
 ENGINEER OF BRIDGES AND STRUCTURES

DATE - MARCH 16, 2021

REVISED -  
 REVISED -

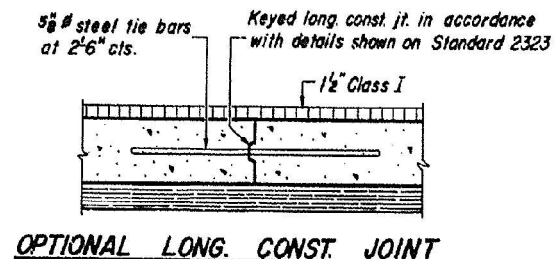
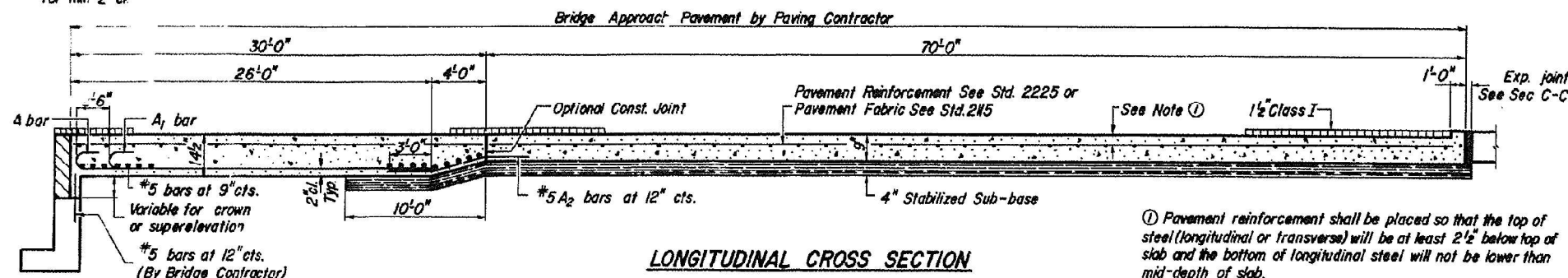
STATE OF ILLINOIS  
 DEPARTMENT OF TRANSPORTATION

BAR SPLICER ASSEMBLY AND MECHANICAL SPLICER DETAILS  
 SN 008 - 0041

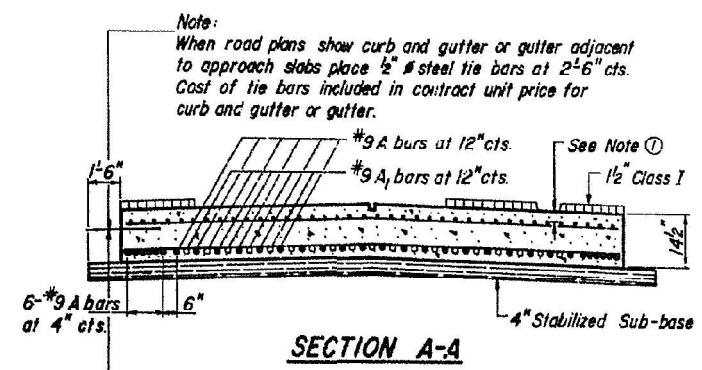
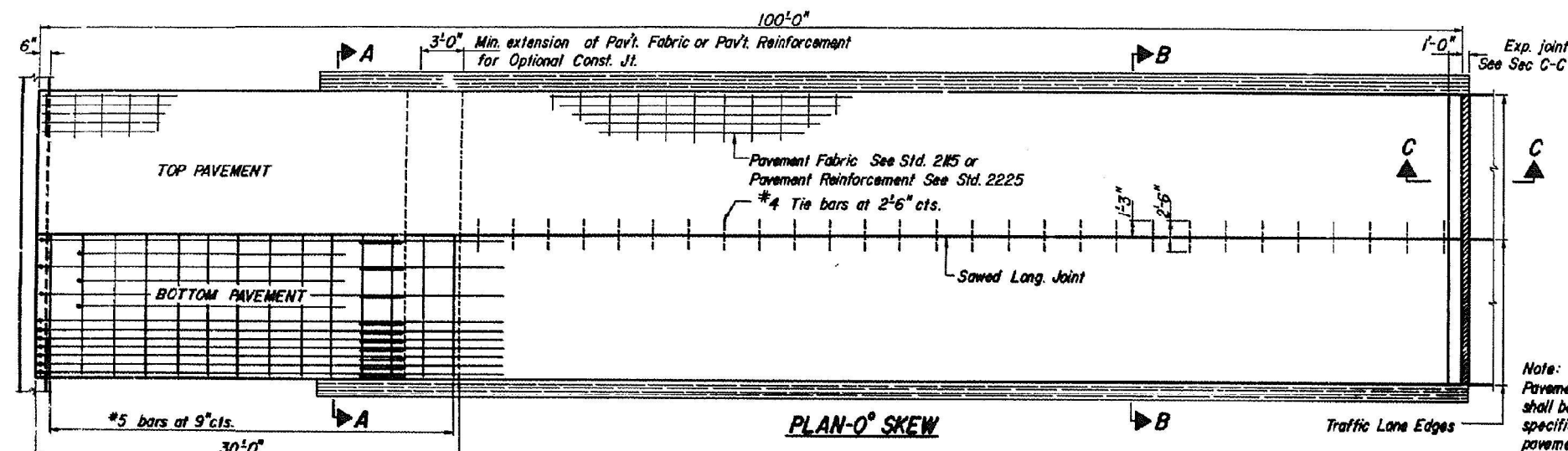
SHEET NO. 11 OF 12 SHEETS

F.A.P. RTE.	SECTION	COUNTY	TOTAL SHEETS	SHEET NO.
18	(105VB-3)BJR	CARROLL	22	21
ILLINOIS			CONTRACT NO. 64P66	
FED. AID PROJECT				

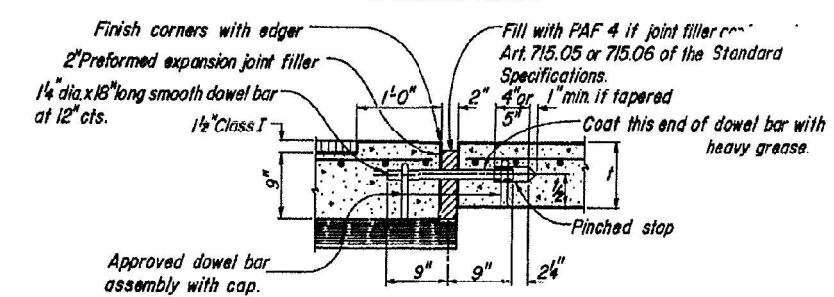
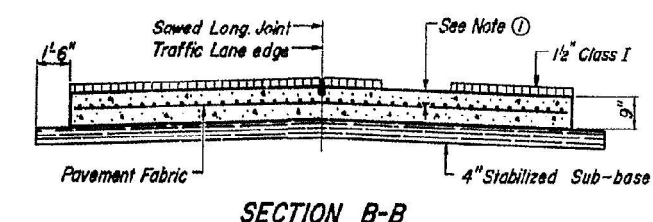
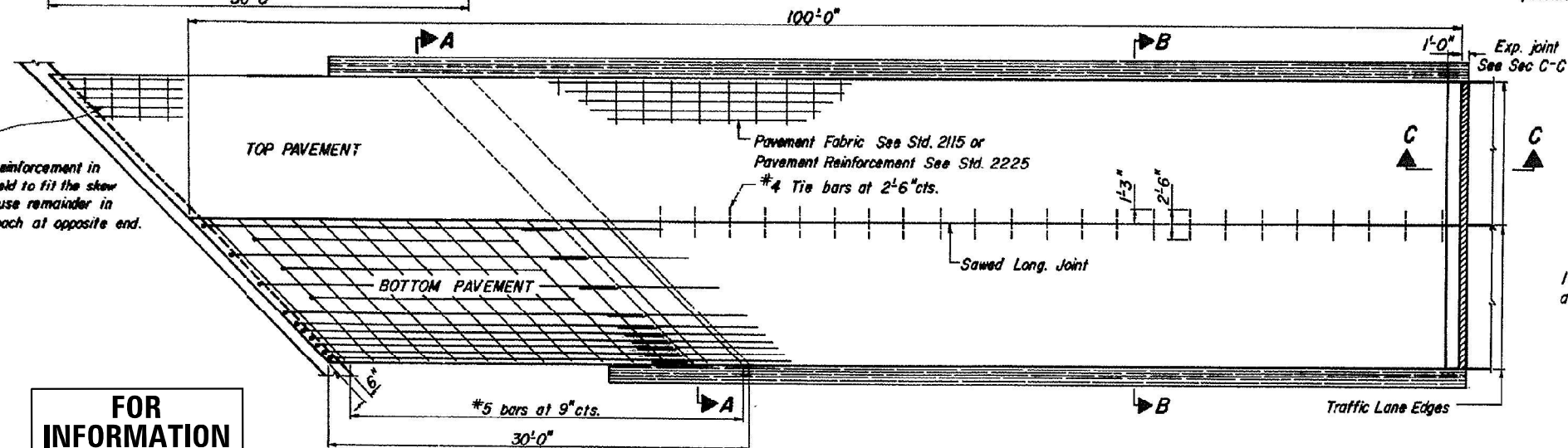
Note: Till hook of #9 bars for min 2" cl.



As approved by the Engineer, the contractor may elect to reduce the widths by use of the Optional Longitudinal Construction Joint shown. Joint shall be located at the edge of Traffic Lane.

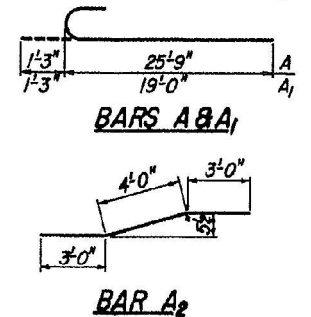
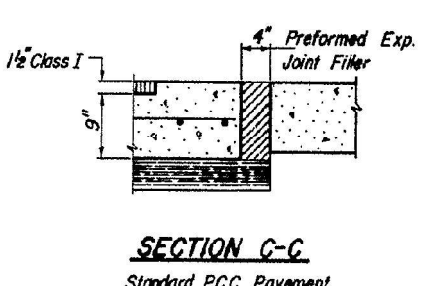
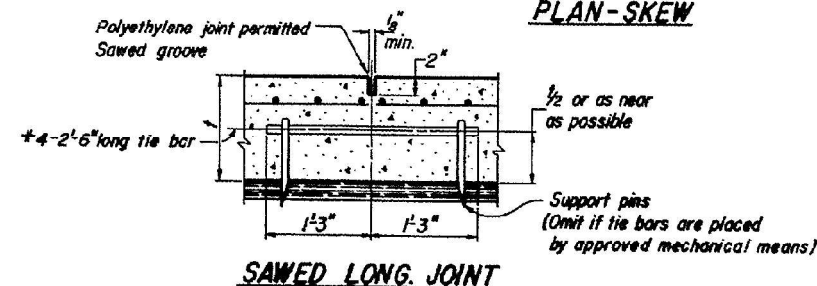


Note: Tie bars in accordance with details for Bulkhead Longitudinal Construction Joint shown on Standard 2323. The transition for gutter shall be made in 100 feet and will be paid for as CONCRETE GUTTER, of the type specified. The transition for curb and gutter shall be made in 100 feet and will be paid for as COMBINATION CURB and GUTTER, of the type specified.



FOR INFORMATION ONLY

STATE OF ILLINOIS DEPARTMENT OF TRANSPORTATION		ISSUED REVISIONS	
PASSED	MARCH 30, 1974		
APPROVED	MAR 28, 1974		



SECTION C-C  
Continuous Reinforced P.C.C. Pavement  
BRIDGE APPROACH PAVEMENT  
STANDARD 2353