

STATE OF ILLINOIS
DEPARTMENT OF TRANSPORTATION

F.A.P. RTE.	SECTION	COUNTY	TOTAL SHEETS	SHEET NO.
615	118RS-3	BUREAU	27	1
		ILLINOIS	CONTRACT NO. 66E14	

INDEX OF SHEETS

- 1 COVER SHEET
- 2 GENERAL NOTES
- 3-8 SUMMARY OF QUANTITIES
- 9 TYPICAL SECTIONS
- 10 PERMANENT SURVEY MARKERS TABLE
- 11-15 SCHEDULE OF QUANTITIES
- 16 LINE DIAGRAM
- 17-18 DRAINAGE DETAILS
- 19-22 PAVEMENT MARKING DETAILS
- 23-27 DETAILS

LIST OF ILLINOIS DOT HIGHWAY STANDARDS

- 000001-08 STANDARD SYMBOLS, ABBREVIATIONS AND PATTERNS
- 001006 DECIMAL OF AN INCH AND OF A FOOT
- 202001-01 EARTH MEDIAN DITCH CHECK
- 280001-07 TEMPORARY EROSION CONTROL SYSTEMS
- 406201-01 MAILBOX TURNOUT
- 442201-03 CLASS C AND D PATCHES
- 542301-03 PRECAST REINFORCED CONCRETE FLARED END SECTION
- 667101-02 PERMANENT SURVEY MARKERS
- 701001-02 OFF-ROAD OPERATIONS 2L, 2W, MORE THAN 15' (4.5 m) AWAY
- 701006-05 OFF-ROAD OPERATIONS 2L, 2W, 15' (4.5 m) TO 24" (600 mm) FROM PAVEMENT EDGE
- 701301-04 LANE CLOSURE, 2L, 2W, SHORT TIME OPERATIONS
- 701306-04 LANE CLOSURE, 2L, 2W, SLOW MOVING OPERATIONS DAY ONLY, FOR SPEEDS ≥ 45 MPH
- 701311-03 LANE CLOSURE, 2L, 2W, MOVING OPERATIONS - DAY ONLY
- 701501-06 URBAN LANE CLOSURE, 2L, 2W, UNDIVIDED
- 701502-09 URBAN LANE CLOSURE 2L, 2W, WITH BIDIRECTIONAL LEFT TURN LANE
- 701901-08 TRAFFIC CONTROL DEVICES
- 780001-05 TYPICAL PAVEMENT MARKINGS
- 781001-04 TYPICAL APPLICATIONS RAISED REFLECTIVE PAVEMENT MARKERS
- 782001-01 PRISMATIC CURB REFLECTORS

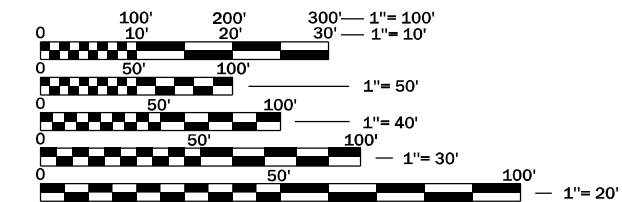
PROPOSED HIGHWAY PLANS

FAP ROUTE 615 (IL 26)
SECTION 118RS-3
PROJECT STP-1BRR(146)
3P MILLING AND RESURFACING
(DESIGNED OVERLAY)
BUREAU COUNTY

C-93-150-14

PROJECT BEGINS
STA. 1077+45

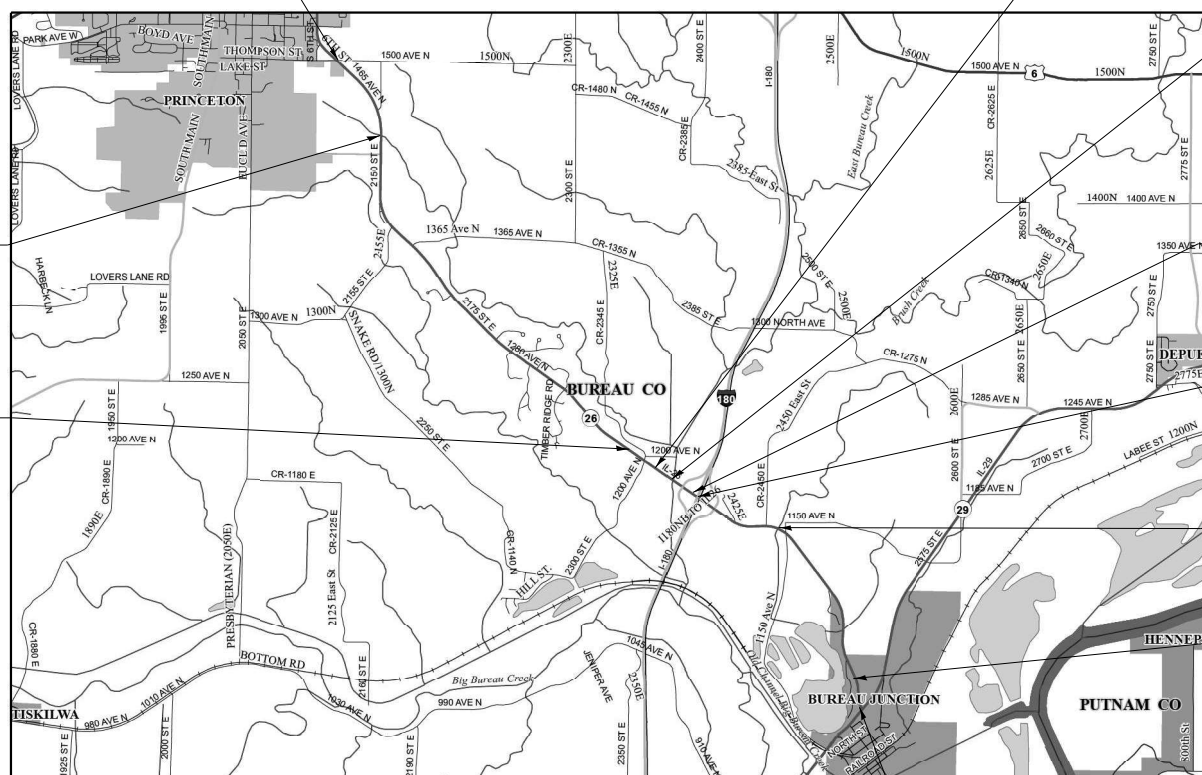
STATION EQUATION
1333+12BK=34+25AH &
40+25BK=1339+12AH



FULL SIZE PLANS HAVE BEEN PREPARED USING STANDARD ENGINEERING SCALES. REDUCED SIZED PLANS WILL NOT CONFORM TO STANDARD SCALES. IN MAKING MEASUREMENTS ON REDUCED PLANS, THE ABOVE SCALES MAY BE USED.

J.U.L.I.E.
JOINT UTILITY LOCATION INFORMATION FOR EXCAVATION
1-800-892-0123
OR 811

PROJECT ENGINEER JACOB OYIER, PE
UNIT CHIEF STEPHENIE CARMIN
DISTRICT 3 NO. (815) 434-6131
CONTRACT NO. 66E14



CULVERT
S.N. 006-2505
STA. 1143+06

CULVERT
S.N. 006-2504
STA. 1311+90

BRIDGE OMISSION
S.N. 006-0159
STA. 37+36

BRIDGE
S.N. 006-0045
(OVER IL 26)
STA. 1349+00

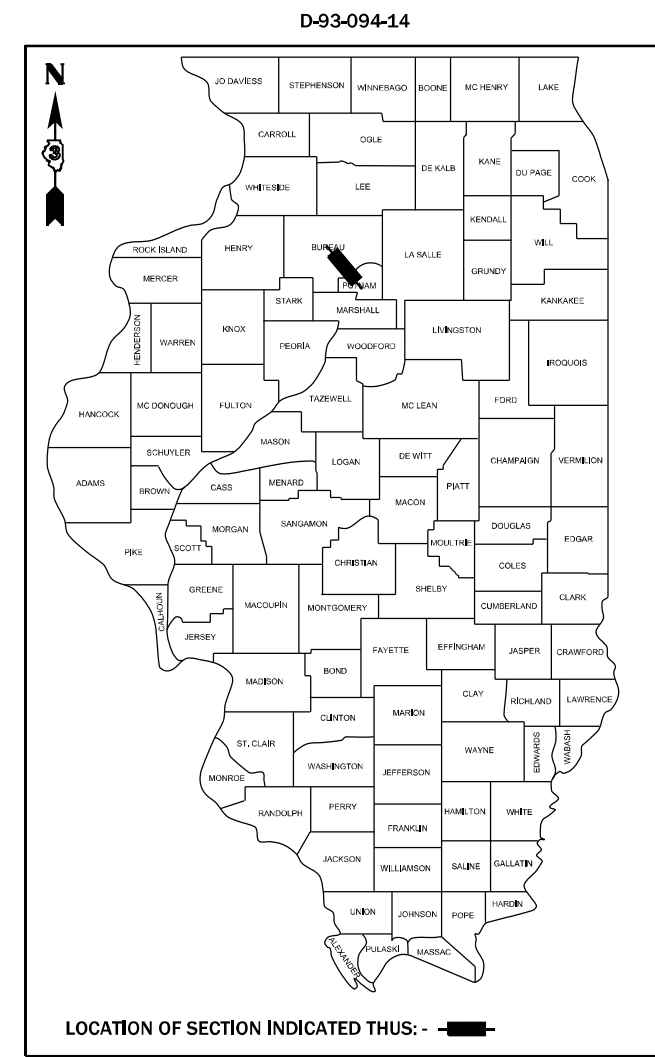
BRIDGE
S.N. 006-0046
(OVER IL 26)
STA. 1349+00

CULVERT
S.N. 006-2002
STA. 1385+50

CULVERT
S.N. 006-2503
STA. 1462+65

PROJECT ENDS
STA. 1468+43

GROSS LENGTH = 39098.0 FT. = 7.40 MILE
NET LENGTH = 38721.0 FT. = 7.36 MILE



FUNCTIONAL CLASSIFICATION
MINOR ARTERIAL
2019 ADT: 4,600
PV: 86.6% SU: 5.4% MU: 8.0%

STATE OF ILLINOIS
DEPARTMENT OF TRANSPORTATION

SUBMITTED January 29, 2021

David Almond
REGIONAL ENGINEER

March 19, 2021
Jack A. Elk
ENGINEER OF DESIGN AND ENVIRONMENT

March 19, 2021
James J. ...
DIRECTOR OF HIGHWAYS PROJECT IMPLEMENTATION

**PRINTED BY THE AUTHORITY
OF THE STATE OF ILLINOIS**

GENERAL NOTES

THE THICKNESS OF HMA SHOWN ON THE PLANS IS THE NOMINAL THICKNESS. DEVIATIONS FROM THE NOMINAL THICKNESS WILL BE PERMITTED WHEN SUCH DEVIATIONS OCCUR DUE TO IRREGULARITIES IN THE EXISTING SURFACE OR BASE ON WHICH THE HMA IS PLACED.

THE ENGINEER WILL BE THE SOLE JUDGE CONCERNING CURING TIME FOR THE VARIOUS HMA LIFTS.

ON EXISTING PAVEMENT WHICH MAY BE SUPERELEVATED, THE NEW HMA PAVEMENT SHALL BE BUILT WITH THE SAME SUPERELEVATION UNLESS NEW SUPERELEVATION RATES ARE GIVEN ON THE PLANS.

ANY REFERENCE TO A STANDARD IN THESE PLANS SHALL BE INTERPRETED TO MEAN THE EDITION AS INDICATED BY THE SUBNUMBER SHOWN IN THE LIST OF STANDARDS OR THE COPY INCLUDED IN THESE PLANS.

THE FOLLOWING RATES OF APPLICATION HAVE BEEN USED IN CALCULATING PLAN QUANTITIES:

GRANULAR MATERIALS	2.05	TONS / CU YD
HMA RESURFACING	112	LBS / SQ YD / IN
SHORT TERM PAVEMENT MARKING	10	FT /100 FT OF APPLICATION
MIX FOR CRACKS, JTS & FLGWYS	0.0003	TONS / SQ YD
BINDER (HAND METHOD)	0.0005	M TONS / SQ M

ALL DAMAGE TO DEPARTMENT OWNED UNDERGROUND FACILITIES, CAUSED BY THE CONTRACTOR SHALL BE REPAIRED TO THE SATISFACTION OF THE DEPARTMENT AT THE CONTRACTOR'S EXPENSE. THIS SHALL INCLUDE ALL TEMPORARY REPAIRS REQUIRED TO KEEP THE FACILITY OPERATIONAL WHILE MATERIAL IS BEING OBTAINED TO MAKE PERMANENT REPAIRS. SPLICING OF ELECTRIC CABLE WILL NOT BE ALLOWED. ELECTRIC CABLE SHALL BE REPLACED FROM POLE TO POLE OR CONTROLLER.

MEMBERS OF JULIE KNOWN TO BE WITHIN THE LIMITS OF THE IMPROVEMENT ARE: AT&T, COMCAST, CORNBELT ENERGY, AMEREN, FRONTIER, MEDIACOM AND NICOR.

COMMITMENTS

HMA MIXTURE REQUIREMENT TABLE

LOCATION(S):	ENTIRE PROJECT	ENTIRE PROJECT	ENTIRE PROJECT	ENTIRE PROJECT
MIXTURE USE(S):	HMA SURFACE	HMA BINDER	INCIDENTAL HMA	CLASS D PATCHES
BINDER GRADE (PG):	PG 64-22	PG 64-22	PG 64-22	PG 64-22
DESIGN AIR VOIDS:	4.0% @ N50	4.0% @ N50	4.0% @ N50	4.0% @ N50
MIXTURE COMPOSITION: (MIXTURE GRADATION)	IL 9.5	IL 9.5	IL 9.5	IL 9.5
FRICTION AGGREGATE:	MIXTURE C	MIXTURE C	MIXTURE C	MIXTURE C
MIXTURE WEIGHT:	112.0 LB/SY/IN	112.0 LB/SY/IN	112.0 LB/SY/IN	
QUALITY MANAGEMENT PROGRAM:	QCP	QCP	QC/QA	QC/QA
SUBLOT SIZE:	1000 TONS	1000 TONS	N/A	N/A
DENSITY TEST METHOD:	CORES	CORES	SATISFACTION OF THE ENGINEER	SATISFACTION OF THE ENGINEER

STATE OF ILLINOIS
DEPARTMENT OF TRANSPORTATION
DISTRICT THREE
AS BUILT INFORMATION

STATE OF ILLINOIS
DEPARTMENT OF TRANSPORTATION
DISTRICT THREE

SUPERVISING CONSTRUCTION FIELD ENGINEER

PREPARED BY: _____
DISTRICT STUDIES & PLANS ENGINEER

RESIDENT ENGINEER / TECHNICIAN

DATE: _____

START & END DATES
OF CONSTRUCTION:

EXAMINED BY: _____
DISTRICT CONSTRUCTION ENGINEER

INSPECTORS: _____

DISTRICT MATERIALS ENGINEER

DISTRICT OPERATIONS ENGINEER

FILE NAME =	USER NAME = NOLASCOCJ	DESIGNED -	REVISED -
pw:\planroom\dot\illinois.gov\PWIDOT\Documents\IDOT	offices\District 3\Projects\1366E14\CADD\data\1366E14\eh\cover	DRAWN -	REVISED -
Default	PLOT SCALE = 100,0000' / in.	CHECKED -	REVISED -
	PLOT DATE = 1/29/2021	DATE -	REVISED -

**STATE OF ILLINOIS
DEPARTMENT OF TRANSPORTATION**

GENERAL NOTES

SCALE: SHEET OF SHEETS STA. TO STA.

F.A.P. RTE.	SECTION	COUNTY	TOTAL SHEETS	SHEET NO.
615	118RS-3	BUREAU	27	2
CONTRACT NO. 66E14				
ILLINOIS FED. AID PROJECT				

MODEL: Default
 FILE NAME: p:\mhammon.dwt
 PROJECT: 3\Projects\0366E-14\CADD\0366E-14-CH-500.dgn

CODE NO.	ITEM	UNIT	TOTAL QUANTITY	CONSTRUCTION CODE		
				80% FED	FUND CODE	FUND CODE
				20% STATE	STP	STP
					ROADWAY	ROADWAY
				0005	0005	
				URBAN	RURAL	
70102620	TRAFFIC CONTROL AND PROTECTION, STANDARD 701501	L SUM	1		1	
70102622	TRAFFIC CONTROL AND PROTECTION, STANDARD 701502	L SUM	1		1	
70300100	SHORT TERM PAVEMENT MARKING	FOOT	5475	450	5025	
70300150	SHORT TERM PAVEMENT MARKING REMOVAL	SQ FT	1826	150	1676	
* 78000200	THERMOPLASTIC PAVEMENT MARKING - LINE 4"	FOOT	6596	6596		
* 78000400	THERMOPLASTIC PAVEMENT MARKING - LINE 6"	FOOT	309	309		
* 78000500	THERMOPLASTIC PAVEMENT MARKING - LINE 8"	FOOT	760	760		
* 78000600	THERMOPLASTIC PAVEMENT MARKING - LINE 12"	FOOT	242	242		
* 78001110	PAINT PAVEMENT MARKING - LINE 4"	FOOT	209850	5056	204794	
* 78001130	PAINT PAVEMENT MARKING - LINE 6"	FOOT	11244	632	10612	
* 78001140	PAINT PAVEMENT MARKING - LINE 8"	FOOT	2084		2084	
* 78003100	PREFORMED PLASTIC PAVEMENT MARKING, TYPE B - LETTERS AND SYMBOLS	SQ FT	622	303	319	
* 78003180	PREFORMED PLASTIC PAVEMENT MARKING, TYPE B - LINE 24"	FOOT	205	83	122	
* 78100100	RAISED REFLECTIVE PAVEMENT MARKER	EACH	580	130	450	

*= SPECIALTY ITEM

USER NAME = NOLASCOCJ	DESIGNED -	REVISED -
	DRAWN -	REVISED -
PLOT SCALE = 100,0000 ' / in.	CHECKED -	REVISED -
PLOT DATE = 1/29/2021	DATE -	REVISED -

**STATE OF ILLINOIS
DEPARTMENT OF TRANSPORTATION**

SUMMARY OF QUANTITIES

SCALE: SHEET OF SHEETS STA. TO STA.

F.A.P/S RTE.	SECTION	COUNTY	TOTAL SHEETS	SHEET NO.
MULT	(118)RS-3	BUREAU	27	6
CONTRACT NO. 66E14				
ILLINOIS FED. AID PROJECT				

Model: Default
 File Name: p:\p12100000\dot.illinois.gov\p12100000\documents\DOT_Offices\District_3\project\03366E14\03366E14-1h-500.dgn

CODE NO.	ITEM	UNIT	TOTAL QUANTITY	CONSTRUCTION CODE	
				FUND CODE STP	FUND CODE STP
				ROADWAY	ROADWAY
				0005 URBAN	0005 RURAL
Z0005300	BOX CULVERTS TO BE CLEANED	EACH	2		2
Z0010615	CLEANING EXISTING INLETS	EACH	2	2	
Z0015560	DEBRIS REMOVAL	UNIT	6		6
Z0029300	GROUT REPAIR	FOOT	12		12
Z0030850	TEMPORARY INFORMATION SIGNING	SQ FT	42	21	21
Z0033700	LONGITUDINAL JOINT SEALANT	FOOT	38721	3219	35502
Z0034105	MATERIAL TRANSFER DEVICE	TON	36773	3087	33686
Z0055300	RUMBLE STRIP	EACH	3		3
Z0058668	GRADING AND SHAPING FORESLOPES	SQ YD	32		32

80% FED
20% STATE

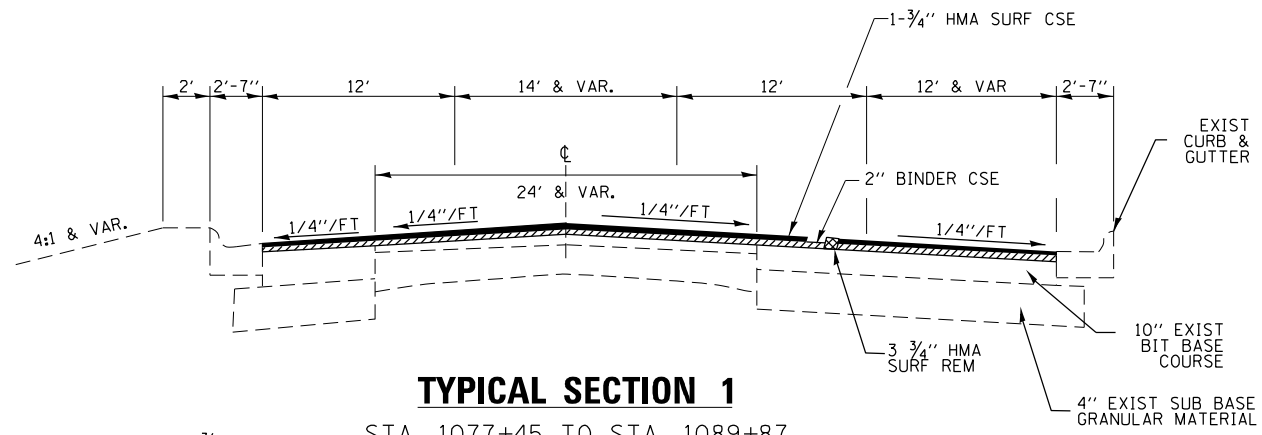
USER NAME = NOLASCOCJ	DESIGNED -	REVISED -
	DRAWN -	REVISED -
PLOT SCALE = 100.0000' / in.	CHECKED -	REVISED +
PLOT DATE = 1/29/2021	DATE -	REVISED +

**STATE OF ILLINOIS
DEPARTMENT OF TRANSPORTATION**

SUMMARY OF QUANTITIES

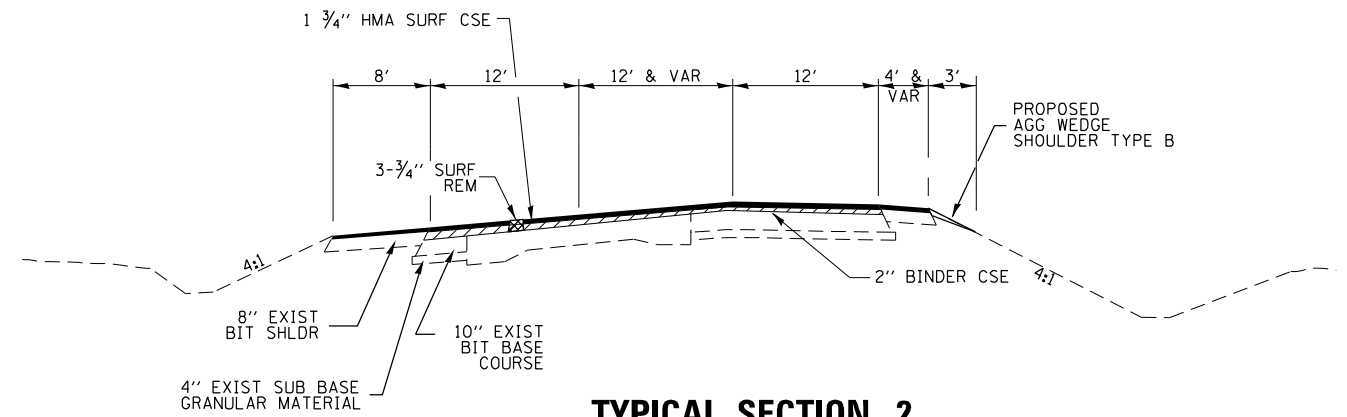
SCALE: SHEET OF SHEETS STA. TO STA.

F.A.P/S RTE.	SECTION	COUNTY	TOTAL SHEETS	SHEET NO.
MULT	(118)RS-3	BUREAU	27	8
ILLINOIS FED. AID PROJECT			CONTRACT NO. 66E14	



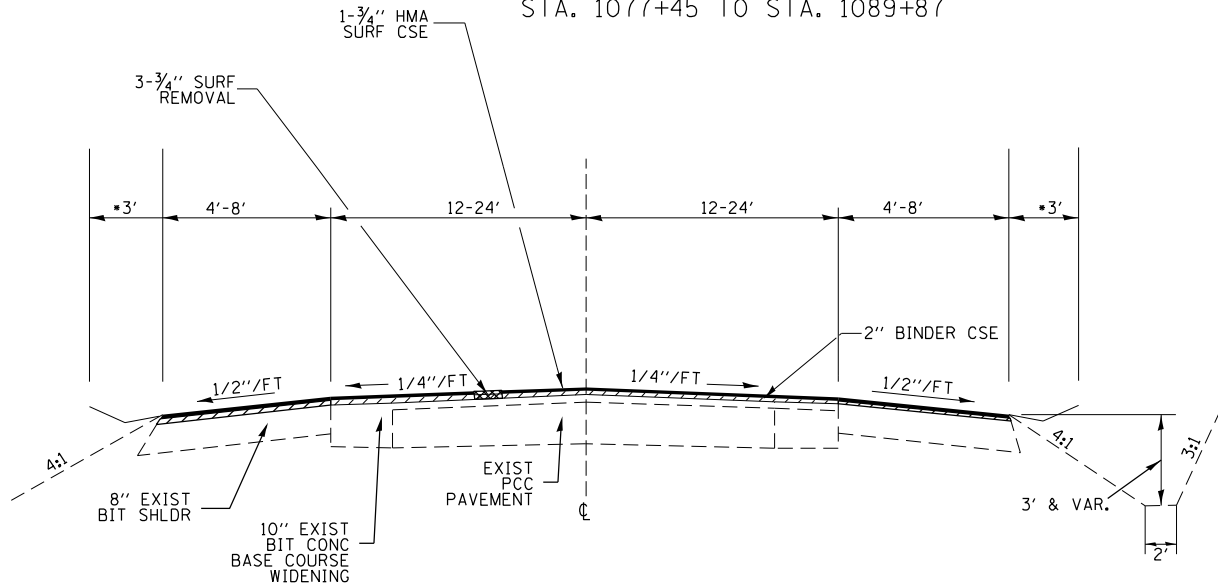
TYPICAL SECTION 1

STA. 1077+45 TO STA. 1089+87



TYPICAL SECTION 2

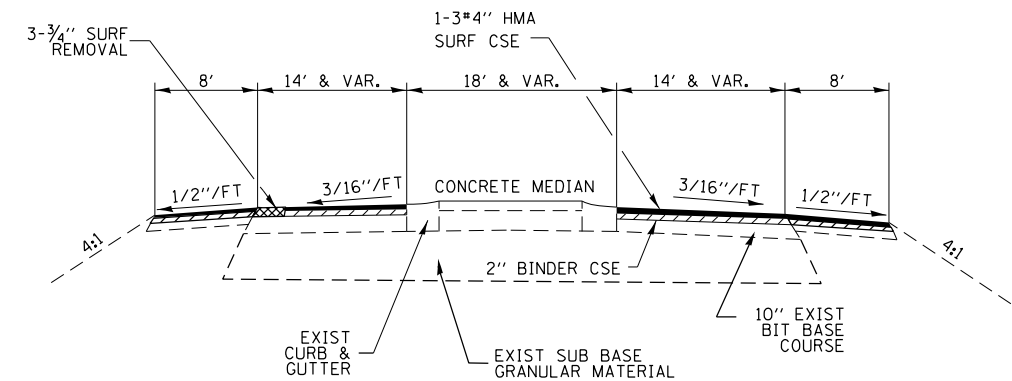
STA. 1089+87 TO STA. 1099+57.29
MAX SUPER -ELEVATION 698



TYPICAL SECTION 3

STA 1099+57.29 TO STA 1329+35
STA 1366+00 TO STA 1437+87

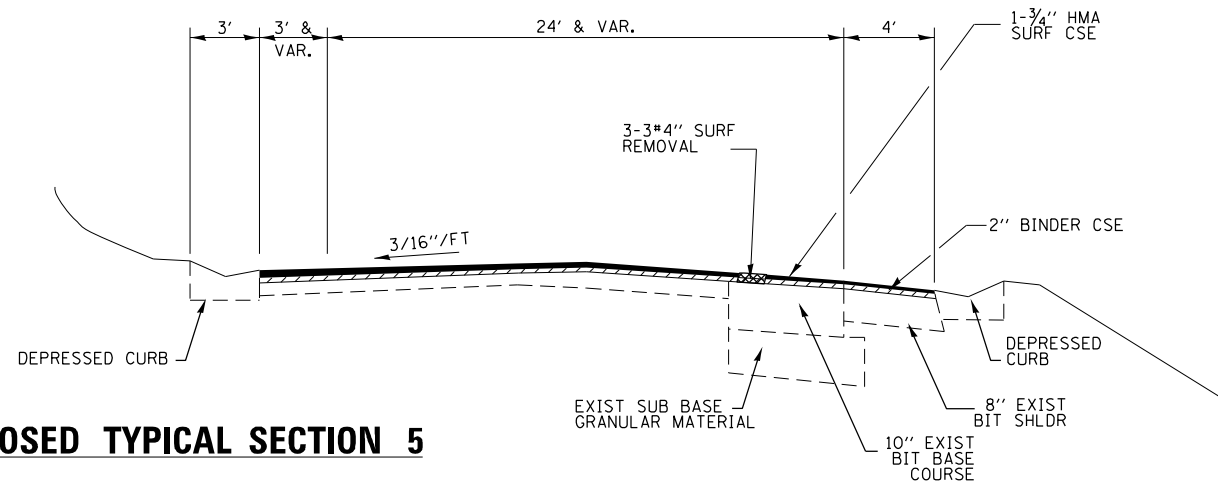
*DEPRESSED CURB STA 1292+70 TO STA 1318+60, 1366+90 TO STA 1372+28 & STA 1417+72 TO 1426+80



TYPICAL SECTION 4

STA. 1329+35 TO STA. 1366+00

STATION EQUATION
1333+12BK=34+25AH &
40+25BK=1339+12AH



PROPOSED TYPICAL SECTION 5

STA. 1437+87 TO STA. 1468+43

*DEPRESSED CURB 1438+65 TO STA 1468+43

FILE NAME =	USER NAME = NOLASCOCJ	DESIGNED -	REVISED -	STATE OF ILLINOIS DEPARTMENT OF TRANSPORTATION	TYPICAL SECTIONS			F.A.P. RTE.	SECTION	COUNTY	TOTAL SHEETS	SHEET NO.
pw:\planroom\dot\illinois\gov\PWIDOT\Documents\IDOT\offices\District 3\Projects\D366E14\CADDData\D366E14\eh14\typical	DRAWN -	REVISED -	REVISED -					615	118RS-3	BUREAU	27	9
Default	PLOT SCALE = 100,0000' / in.	CHECKED -	REVISED -		CONTRACT NO. 66E14							
	PLOT DATE = 1/29/2021	DATE -	REVISED -		SCALE:	SHEET	OF	SHEETS	STA.	TO	STA.	ILLINOIS

PERMANENT SURVEY MARKERS						
MONUMENT REFERENCE NUMBER	DESCRIPTION	APPROXIMATE LOCATION	EXISTING MONUMENT TYPE	PROPOSED MONUMENT TYPE	MONUMENT RECORD TO BE RECORDED	RESPONSIBILITY
006496	W QTR CORNER SECTION 5, T16N, R9E, 4TH PM * THIS MARKER IS NEAR THE CONSTRUCTION LIMITS NEED FOR SETTING WILL BE DETERMINED FOLLOWING CONSTRUCTION.	AT ROUTE 6	MAG NAIL	TYPE 1*	YES	1
026104	CENTER SECTION 22, T16N, R9E, 4TH PM	675 FEET +/- SOUTH OF 2150 E. RD. TURNOFF	MISSING	TYPE 1	YES	1
021105	S QTR CORNER SECTION 22, T16N, R9E, 4TH PM	3,300 FEET +/- SOUTH OF 2150 E. RD. TURNOFF	MISSING	TYPE 1	YES	1
026010	S QTR CORNER SECTION 36, T16N, R9E, 4TH PM	3000 FEET +/- NORTHWEST OF I-180	MAG NAIL	TYPE 1	YES	1
026012	SE CORNER SECTION 6, T15N, R10E, 4TH PM	5200 FEET +/- NORTH OF ILL. RTE. 29 NEAR QUARRY WEST ENTRANCE	MISSING	TYPE 1	YES	1
<p>*** RE WILL INFORM PLATS AND PLANS OF THE ANTICIPATED MILLING SCHEDULE FOR THE PURPOSE OF LOCATING LOST MONUMENTS EXPOSED BY MILLING ***</p> <p>COORDINATES OF THE LISTED MONUMENTS ARE KNOWN. PRE CONSTRUCTION TIES ARE NOT REQUIRED. UNKNOWN MONUMENTS SET BY OTHERS MAY EXIST. IF AN UNLISTED MONUMENT IS FOUND, R.E. WILL INFORM PLATS AND PLANS TO TIE ANY MONUMENT(S) SUBJECT TO DAMAGE OR DESTRUCTION FROM THE RESURFACING WORK, AND TO RESET THE MONUMENT(S) WHEN RESURFACING IS COMPLETE. R.E. WILL INFORM PLATS AND PLANS TO SEARCH FOR ADDITIONAL MONUMENTS IF THE JOB LIMITS ARE EXPANDED DURING CONSTRUCTION. UPON PAVING COMPLETION, R.E. WILL DIRECT PLATS AND PLANS TO STAKE THE LOCATIONS FOR TYPE 1 MONUMENT CORING. NOTE: FOR BIDDING PURPOSES, NO CONTRACTED LAND SURVEYING SERVICES WILL BE REQUIRED FOR SETTING THE LISTED PERMANENT SURVEY MARKERS. PLATS AND PLANS WILL PREPARE AND RECORD THE REQUIRED MONUMENT RECORDS.</p> <p>RESPONSIBILITY: 1) RESIDENT TO RE-ESTABLISH MONUMENT (PAY ITEM REQUIRED. PERMANENT SURVEY MARKER, TYPE 1) 2) PLATS AND PLANS TO RE-ESTABLISH MONUMENT</p>						

ENTRANCES SCHEDULE										
LOCATION	SIDE	TYPE	MAT'L	WIDTH	AREA	HMA SURF REM VARIABLE DEPTH	INCIDENTIAL HMA SURFACING	BITUMINOUS MATERIAL (TACK COAT)	AGG WEDGE SHLD TYPE B	
				FOOT	SQ FT	SQ YD	TON	POUND	TON	
URBAN										
STA 1085+62	LT	CE	HMA	92	920	102	16	46		
STA 1090+29	RT	CE	AGG	6	18					0.1
URBAN TOTAL						102	16	46		0.1
RURAL										
STA 1111+20	LT	CE/MBTO	HMA	58	580	64	10	29		
STA 1111+80	LT	CE/MBTO	HMA	46	460	51	8	23		
STA 1113+12	LT	FE	AGG	20	60					0.4
STA 1113+31	RT	CE	HMA	40	400	44	7	20		
STA 1133+00	RT	FE	AGG	20	60					0.4
STA 1140+66	RT	PE	HMA	26	260	29	4	13		
STA 1143+95	RT	FE	AGG	30	90					0.6
STA 1147+28	LT	PE	AGG	23	69					0.4
STA 1149+09	LT	PE/MBTO	HMA	26	260	29	4	13		
STA 1152+58	RT	PE	AGG	42	126					0.8
STA 1152+58	LT	FE	AGG	11	33					0.2
STA 1155+40	RT	PE	AGG	45	135					0.9
STA 1156+90	LT	FE	AGG	22	66					0.4
STA 1161+68	LT	PE	AGG	41	123					0.8
STA 1163+61	LT	PE/MBTO	HMA	62	620	69	11	31		
STA 1187+08	LT	FE	AGG	25	75					0.5
STA 1187+15	RT	FE	AGG	40	120					0.8
STA 1203+63	RT	FE	AGG	30	90					0.6
STA 1204+05	LT	PE/MBTO	HMA	65	650	72	11	33		
STA 1206+78	RT	PE/MBTO	HMA	50	500	55	9	25		
STA 1224+02	LT	PE/MBTO	AGG	65	195					1.2
STA 1225+16	RT	FE	AGG	20	60					0.4
STA 1229+06	RT	PE/MBTO	AGG	50	150					0.9
STA 1231+10	LT	PE/MBTO	AGG	55	165					1
STA 1232+94	RT	PE	AGG	55	165					1
STA 1235+00	LT	PE	HMA	54	540	60	9	27		
STA 1238+61	LT	PE/MBTO	HMA	65	650	72	11	33		
STA 1240+21	RT	PE/MBTO	AGG	58	174					1.1
STA 1241+61	RT	CE/MBTO	HMA	120	1200	133	20	60		
STA 1241+89	LT	PE	HMA	38	380	42	6	19		
STA 1246+94	RT	MBTO	AGG	20	60					0.4
STA 1247+63	LT	PE	HMA	60	600	67	10	30		
STA 1248+77	LT	PE	HMA	38	380	42	6	19		
STA 1255+50	LT	FE	AGG	20	60					0.4
STA 1261+64	LT	FE	AGG	25	75					0.5
STA 1267+86	RT	PE	HMA	60	600	67	10	30		
STA 1274+10	RT	CE	HMA	30	300	33	5	15		
STA 1282+20	LT	FE	HMA	15	150	17	3	8		
STA 1283+80	RT	MBTO	AGG	20	60					0.4
STA 1286+11	LT	PE	HMA	33	330	37	6	17		
STA 1287+17	LT	PE	HMA	23	230	25	4	12		
STA 1287+46	RT	PE	HMA	55	550	61	9	28		
STA 1289+44	RT	PE/MBTO	HMA	50	500	55	9	25		
STA 1293+00	LT	PE	HMA	41	410	45	7	21		
STA 1329+22	RT	FE	AGG	15	45					0.3
STA 1329+22	LT	FE	AGG	15	45					0.3
STA 1370+45	RT	PE/MBTO	HMA	60	600	67	10	30		
STA 1373+18	LT	PE/MBTO	HMA	54	540	60	9	27		
STA 1404+91	RT	PE	AGG	45	135					0.9
STA 1404+91	LT	FE	AGG	20	60					0.4
STA 1412+38	LT	CE	HMA	54	540	60	9	27		
STA 1416+66	LT	CE	AGG	90	270					1.7
STA 1417+56	RT	CE	HMA	60	600	67	10	30		
STA 1433+30	RT	CE	HMA	80	800	89	14	40		
STA 1438+65	RT	PE	HMA	60	600	67	10	30		
STA 1447+84	RT	CE	HMA	60	600	67	10	30		
RURAL TOTAL						1650	251	745		17.7
TOTALS						1752	267	791		18

MODEL: Default
 FILE NAME: p:\m\m\room.dwt
 PROJECT: D:\366E\14\CAD\DATA\0366E14\14-RT-2\14-RT-2.dwg

USER NAME = NOLASCOCJ	DESIGNED -	REVISED -
DRAWN -	REVISOR -	
PLOT SCALE = 100,0000' / in.	CHECKED -	REVISED -
PLOT DATE = 1/29/2021	DATE -	REVISED -

STATE OF ILLINOIS
DEPARTMENT OF TRANSPORTATION

SCHEDULES			
SCALE:	SHEET	OF	SHEETS
	STA.	TO	STA.

F.A.P/S RTE.	SECTION	COUNTY	TOTAL SHEETS	SHEET NO.
MULT	(118)RS-3	BUREAU	27	12
CONTRACT NO. 66E14				
ILLINOIS FED. AID PROJECT				

DELINEATOR SCHEDULE				
STATION	TYPE/SIZE	STR NO.	LOCATION DESCRIPTION	DELINEATORS
				EACH
RURAL				
1110+00	30" RCEP	1178	374' S OF 1500N RD	2
1126+65	30" RCP	1179	635' N OF 2150E RD	2
1143+06	7X4 BOX CULV	006-2505	1.2 MILES S OF US 6	2
1166+05	36" RCP	1181	0.15 MILE N OF 1385N RD	2
1182+80	36" RCP	1182	80' S OF 138S RD	2
1224+55	24" RCEP	1184	0.37 MILE WEST OF 1290N RD	2
1301+00	18" CMP	N/A	0.41 MILE WEST OF 1200N RD	2
1344+20	36" RCP	1189	320' S OF I-180 SB OFF RAMP	2
1350+95	72" RCP	1188	581' N OF I-180 NB ON RAMP	2
1385+50	DBL 11X6 BOX CULV	006-2002	0.7 MILE EAST OF I-180	2
1395+43	30" RCP	1190	563' S OF 2460E RD	2
1413+50	TWIN 24" RCP	1191	1.1 MILE N OF IL 29 CL	2
1454+50	3X3 BOX CULV	2050	1488' N OF IL 29 CL	2
1454+50	24" RCP	2051	1488' N OF IL 29 CL	2
1459+45	30" RCP	2049	993' N OF IL 29 CL	2
1462+65	18" CMP (N GUTTER INLET)	006-2503	0.1 MILE NORTH OF IL 29	2
TOTAL				32

PATCHING & MANHOLE SCHEDULE				
LOCATION	PATCH LENGTH	PATCH WIDTH	CLASS D PATCH TYPE II 12"	FRAMES AND LIDS TO BE ADJ
STA	FOOT	FOOT	SQ YD	EACH
URBAN				
1078+15				1
1081+00				1
1084+00				2
1085+05				1
1086+62				1
1087+12				2
1088+40				1
1089+45				1
1089+65				2
1090+29				1
1092+15				1
1092+52				1
URBAN TOTAL				15
RURAL				
1288+78	8	16	14	1
RURAL TOTAL			14	1
TOTAL			14	16

PATCHING & MANHOLE SCHEDULE				
LOCATION	PATCH LENGTH	PATCH WIDTH	CLASS D PATCH TYPE II 12"	FRAMES AND LIDS TO BE ADJ
STA	FOOT	FOOT	SQ YD	EACH
URBAN				
1078+15				1
1081+00				1
1084+00				2
1085+05				1
1086+62				1
1087+12				2
1088+40				1
1089+45				1
1089+65				2
1090+29				1
1092+15				1
1092+52				1
URBAN TOTAL				15
RURAL				
1288+78	8	16	14	1
RURAL TOTAL			14	1
TOTAL			14	16

MODEL: Default
 FILE NAME: p:\pub\mroom.dwt
 FILE PATH: p:\pub\mroom.dwt
 PROJECT: 0366E14-CH-SCHEMATIC.dgn
 OFFICE: District 3
 DATE: 1/29/2021

USER NAME = NOLASCOCJ	DESIGNED -	REVISED -
	DRAWN -	REVISED -
PLOT SCALE = 100,0000' / in.	CHECKED -	REVISED -
PLOT DATE = 1/29/2021	DATE -	REVISED -

**STATE OF ILLINOIS
DEPARTMENT OF TRANSPORTATION**

SCHEDULES			
SCALE:	SHEET	OF	SHEETS
	STA.	TO	STA.

F.A.P/S RTE.	SECTION	COUNTY	TOTAL SHEETS	SHEET NO.
MULT	(118)RS-3	BUREAU	27	14
			CONTRACT NO. 66E14	
		ILLINOIS	FED. AID PROJECT	

DRAINAGE SCHEDULE																					
STATION	TYPE/SIZE	STR NO.	LOCATION DESCRIPTION	INSERTION	SUBBASE	POROUS	PIPE	TRENCH	STONE	STONE	PIPE	PIPE	PIPE CULV,	PRECAST REINF	BOX CULV	GROUT	TEMP	PLUG	REM	EXC &	FILTER
				CULVERT	GRANULAR MATL,	EMBANKMENT	CULV	BACKFILL	RIPRAP,	RIPRAP,	DRAINS,	DRAINS,	CLASS A	CONC FLARED	TO BE	REPAIR	DITCH	EXIST	INLET	GRADING	FABRIC
				LINER 18"	TYPE B, 4"	CU YD	REM	CU YD	CLASS A3	CLASS A4	12"	18"	TY 1, 24"	END SEC, 24"	CLEANED	*	CHECK	PIPE	EACH	SHLDR	SQ YD
				FT	SQ YD	CU YD	FT	CU YD	SQ YD	SQ YD	FT	FT	FT	EA	EACH	FT	FT	CU YD	EACH	UNIT	SQ YD
RURAL																					
1143+06	7X4 BOX CULV	006-2505	1.2 MILES S OF US 6							33					1						
1166+05	36" RCP	1181	0.16 MILE N OF 1385N RD						8												
1182+80	36" RCP	1182	80' S OF 1385 RD						8							12					
1212+50 TO 1215+50	4' STRIP ON LEFT SHOULDER		0.11 MILE N OF WILLOW DR						133												133
1219+20	LT DITCH OUTLET		59' S OF WILLOW DR							9							20				
1224+55	24" RCEP	1184	0.37 MILE WEST OF 1290N RD		10	4.8	8	9.3		32			8	1							
1301+00	18" CMP	N/A	0.41 MILE WEST OF 1200N RD				8	5.6	5				8								
37+36	BRIDGE	006-0159	0.25 MILE NW OF I-180							12								8.5	2	1	12
1385+50	DBL 11X6 BOX CULV	006-2002	0.7 MILE EAST OF I-180						6												
1454+50	3X3 BOX CULVERT	2050	1488' N OF IL 29 CL												1						
1462+65	18" CMP (N GUTTER INLET)	006-2503	0.1 MILE NORTH OF IL 29	20			16			6	20		8								
TOTAL				20	10	4.8	32	14.9	160	92	20	8	8	1	2	12	20	8.5	2	1	145

*RE-ATTACH UPSTREAM GRATE TO END SECTION USING GROUT

DRAINAGE MAINTENANCE SCHEDULE													
STATION	TYPE/SIZE	STR NO.	LOCATION DESCRIPTION	PIPE CULV	PIPE CULV	CONC	REATTACH	CHANNEL	CLEANING	GRADING AND	DEBRIS	TEMP EROSION	EARTH
				TO BE	TO BE	COLLAR	END	EXCAVATION	EXIST	SHAPING	REM	CONTROL	EXCAVATION
				CLEANED 24"	CLEANED 30"	CU YD	SECTION	CU YD	INLET	FORESLOPES	L SUM	SEEDING	CU YD
				FT	FT	CU YD	EACH	CU YD	EACH	SQ YD	L SUM	POUND	CU YD
URBAN													
1079+49	SS (RT SIDE)		1259' S OF US 6 CL						1				
1089+87	SS (RT SIDE)		12' S OF PARK AVE						1				
URBAN TOTALS									2				
RURAL													
1110+00	30" RCEP	1178	374' S OF 1500N RD	49									
1126+65	30" RCP	1179	635' N OF 2150E RD		58								
1224+55	24" RCEP	1184	0.37 MILE WEST OF 1290N RD										
37+36	BRIDGE	006-0159	0.25 MILE NW OF I-180								1		
1344+20	36" RCP	1189**	320' S OF I-180 SB OFF RAMP			2.7	1						
1350+95	72" RCP	1188	581' N OF I-180 NB ON RAMP					16.7			1		
1385+50	DBL 11X6 BOX CULV	006-2002	0.7 MILE EAST OF I-180								1		
1395+43	30" RCP	1190*	663' S OF 2460E RD				1			15		3	
1413+50	TWIN 24" RCP	1191	1.1 MILE N OF IL 29 CL	88						17		3	11.1
1454+50	3X3 BOX CULV	2050	1488' N OF IL 29 CL								1		
1454+50	24" RCP	2051	1488' N OF IL 29 CL	52							1		
1459+45	30" RCP	2049	993' N OF IL 29 CL		57						1		
RURAL TOTALS				189	115	2.7	2	16.7		32	6	6	11.1
TOTAL				189	115	2.7	2	16.7	2	32	6	6	11.1

**STA 1344+20 (CULV # 1189): REATTACH NORTH END SECTION AND POUR CONCRETE COLLAR TO PREVENT MOVEMENT

*STA 1395+43 (CULV # 1190): REATTACH DOWNSTREAM END SECTION, GRADE & SEED THE FORESLOPE

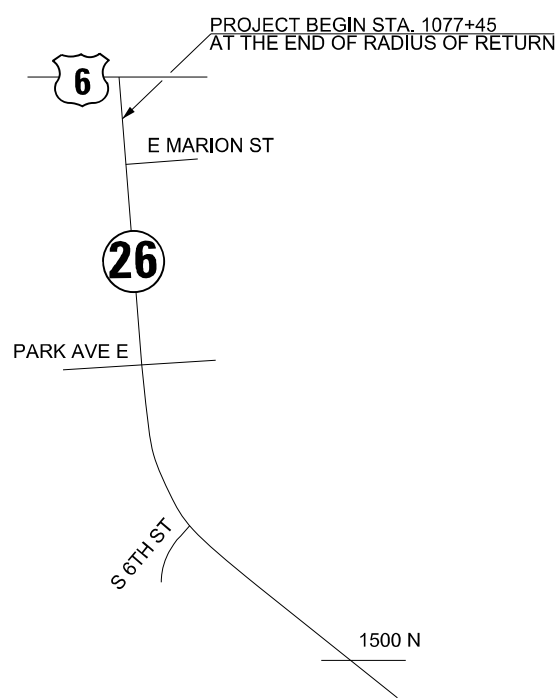
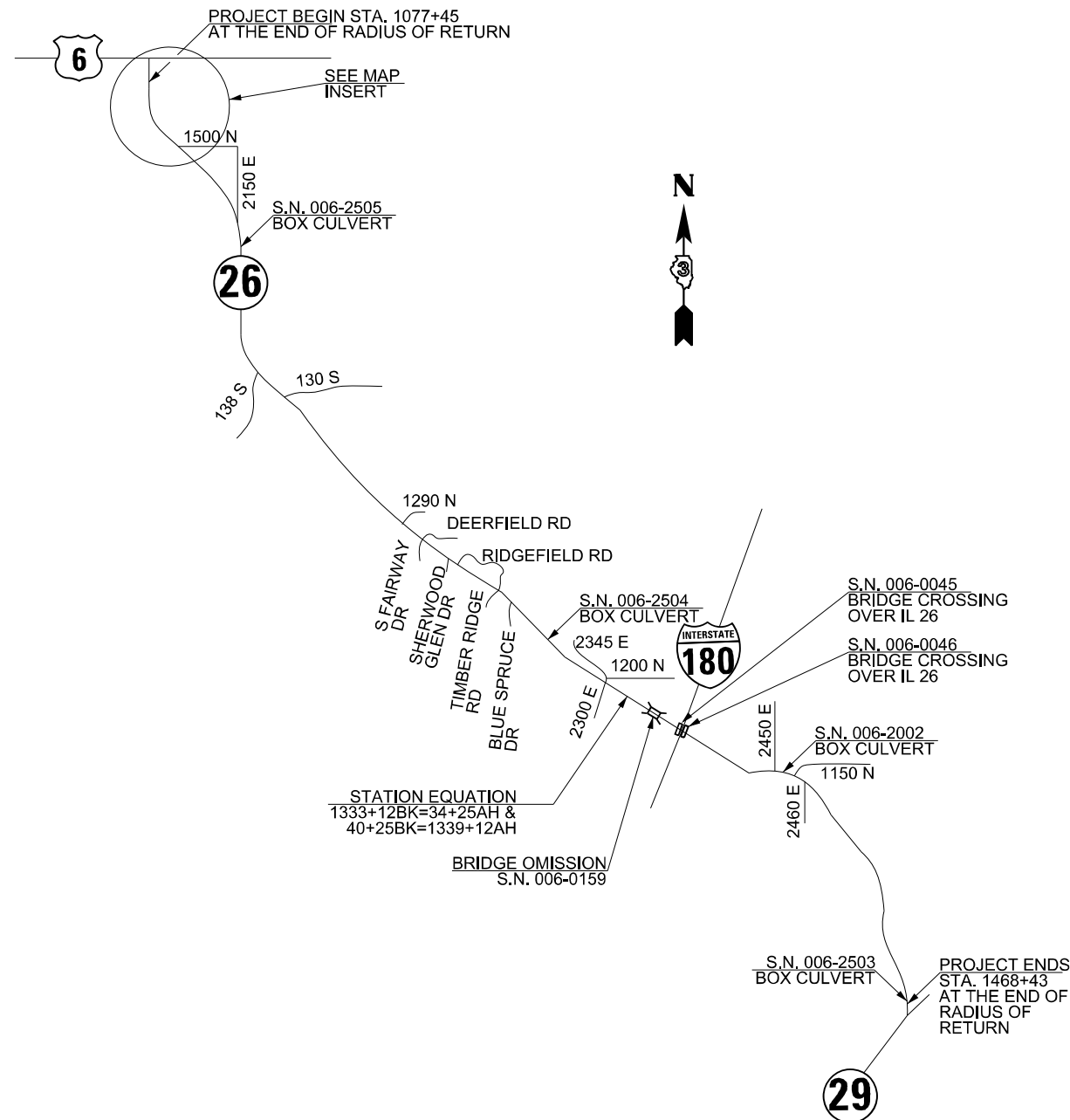
MODEL: Default
 FILE NAME: p:\pub\mroom.dwt
 PROJECT: 0366E-14-CADD\DATA\0366E-14-CH-SCHEMATIC.dgn
 PROJECT: 0366E-14-CADD\DATA\0366E-14-CH-SCHEMATIC.dgn

USER NAME = NOLASCOCJ	DESIGNED -	REVISED -
	DRAWN -	REVISED -
PLOT SCALE = 100,0000' / in.	CHECKED -	REVISED -
PLOT DATE = 1/29/2021	DATE -	REVISED -

**STATE OF ILLINOIS
DEPARTMENT OF TRANSPORTATION**

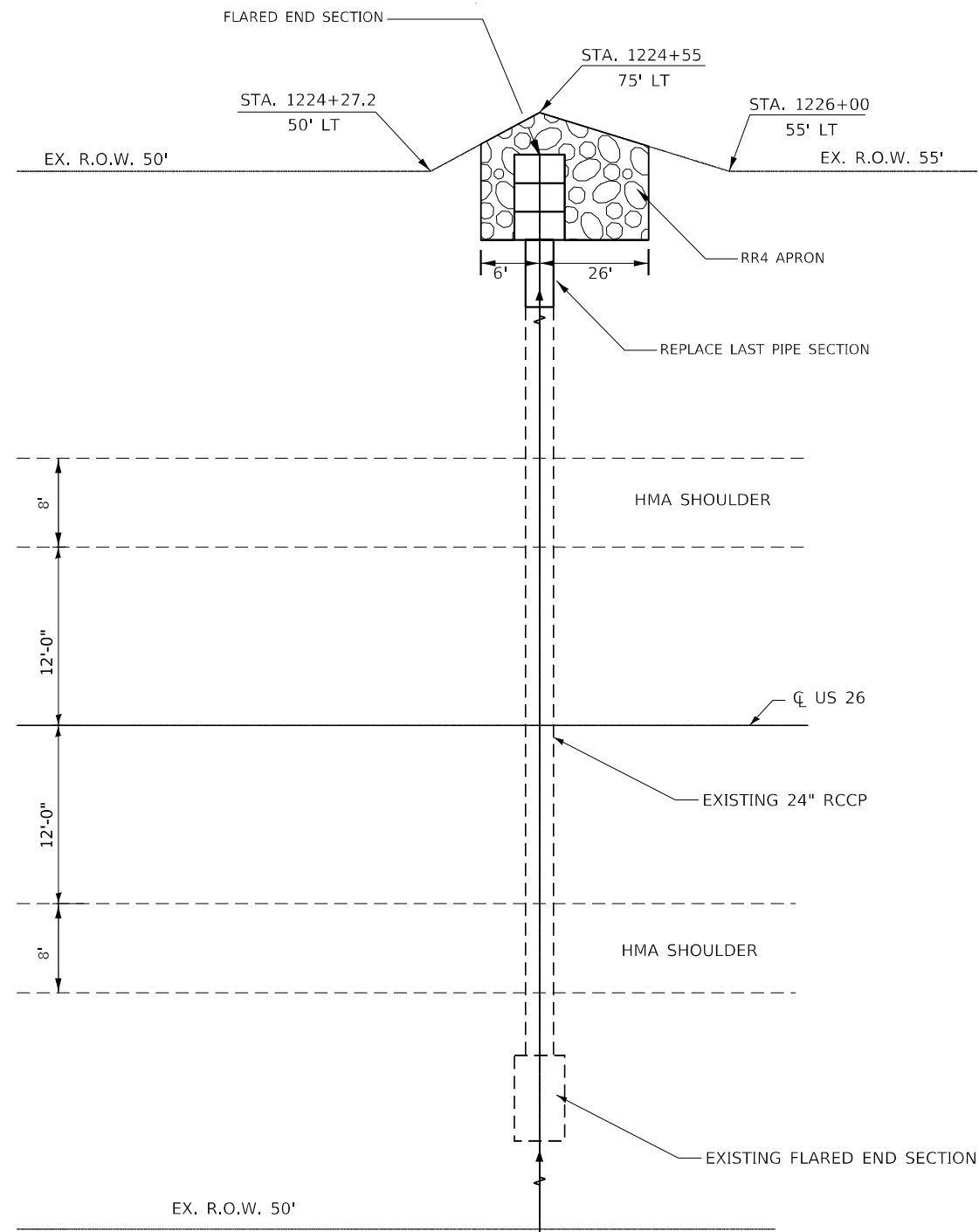
SCHEDULES			
SCALE:	SHEET	OF	SHEETS
	STA.	TO	STA.

F.A.P/S RTE.	SECTION	COUNTY	TOTAL SHEETS	SHEET NO.
MULT	(118)RS-3	BUREAU	27	15
CONTRACT NO. 66E14				
ILLINOIS FED. AID PROJECT				



MAP INSERT

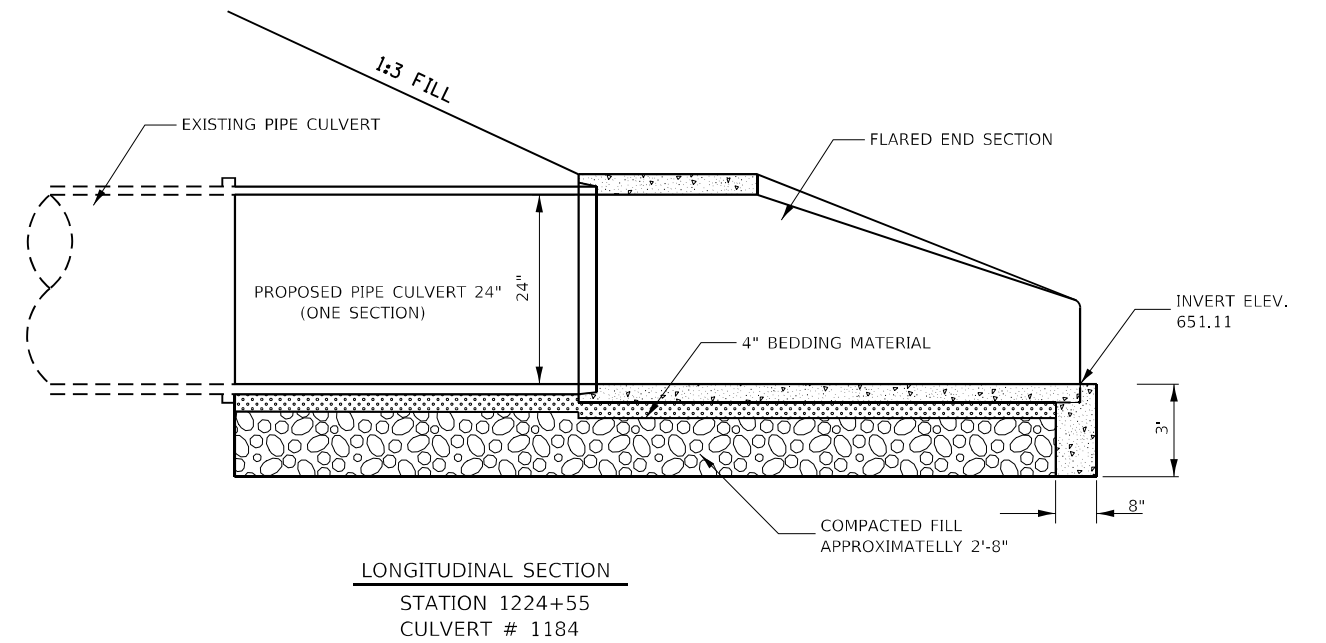
FILE NAME =	USER NAME = NOLASCOCJ	DESIGNED -	REVISED -	STATE OF ILLINOIS DEPARTMENT OF TRANSPORTATION	LINE DIAGRAM			F.A.P. RTE.	SECTION	COUNTY	TOTAL SHEETS	SHEET NO.
pw:\planning\dot.illinois.gov\PIDOT\Documents\IDOT Offices\District 3\Projects\0366E14\Drawings\0366E14-sht-line diagram.dgn		CHECKED -	REVISED -		615	118R5-3	BUREAU	27	16			
Default	PLOT SCALE = 100.0000' / in.	DATE -	REVISED -		CONTRACT NO. 66E14			ILLINOIS FED. AID PROJECT				
	PLOT DATE = 1/29/2021				SCALE:	SHEET NO. 2 OF 23 SHEETS	STA.	TO STA.				



PLAN
STA 1224+55
CULVERT # 1184

NOTES:

1. REMOVE THE LAST PIPE SECTION
2. PLACE COMPACTED FILL TO SUPPORT THE REMOVED PIPE
3. REPLACE THE REMOVED SECTION SECTION WITH A PIPE CULVERT CLASS A, TYPE 1 24"
4. INSTALL CONCRETE FLARED END SECTION 24"
5. PLACE RIPRAP AROUND THE PIPE AS SHOWN.



LONGITUDINAL SECTION
STATION 1224+55
CULVERT # 1184

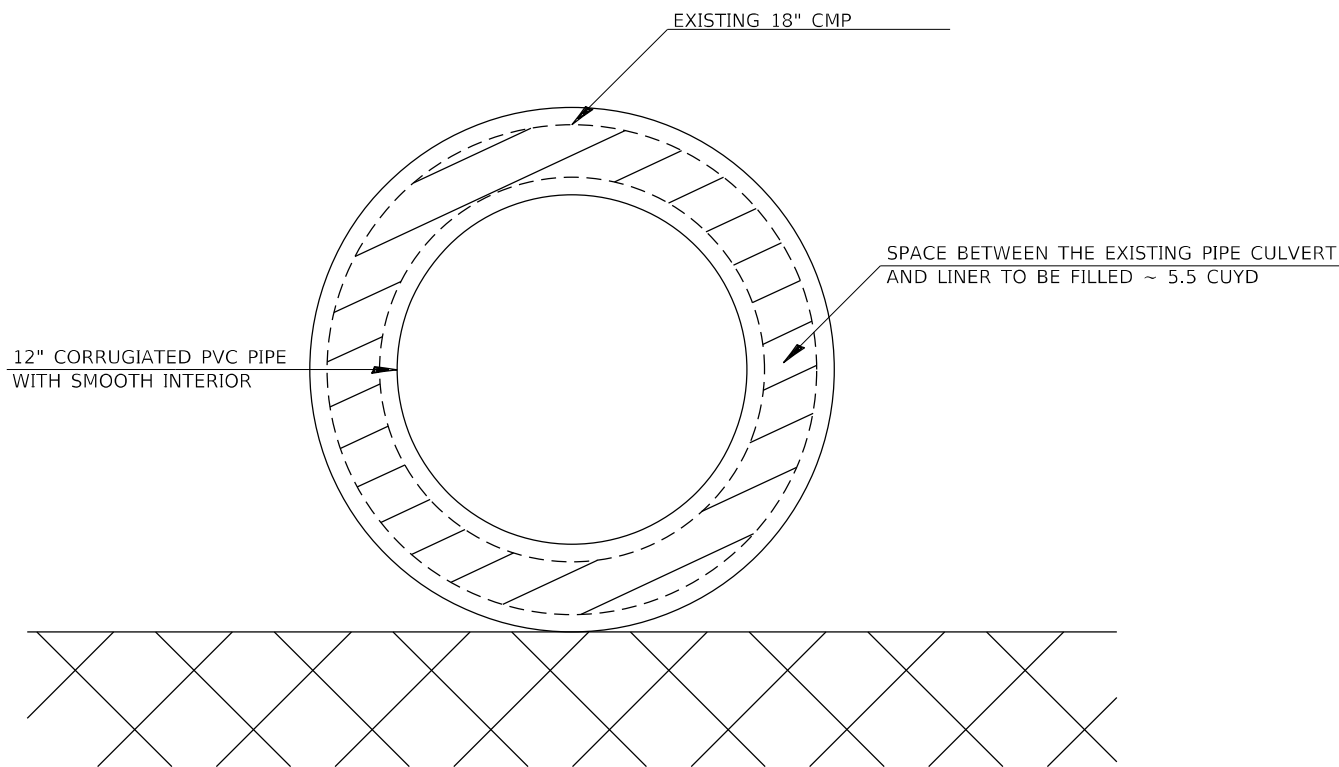
FILE NAME =	USER NAME = NOLASCOCJ	DESIGNED -	REVISED -
pw:\planroom\dot\illinois.gov\PWIDOT\Documents\IDOT	offices\District 3\Projects\D366E14\CADDData\D366E14\eh\4\drain	DRAWN -	REVISED -
Default	PLOT SCALE = 1/10,000' / in.	CHECKED -	REVISED -
	PLOT DATE = 1/29/2021	DATE -	REVISED -

STATE OF ILLINOIS
DEPARTMENT OF TRANSPORTATION

PROPOSED PIPE CULVERT DETAIL
STA 1224+55

SCALE: SHEET OF SHEETS STA. TO STA.

F.A.P. RTE.	SECTION	COUNTY	TOTAL SHEETS	SHEET NO.
615	118RS-3	BUREAU	27	17
			CONTRACT NO. 66E14	
		ILLINOIS	FED. AID PROJECT	

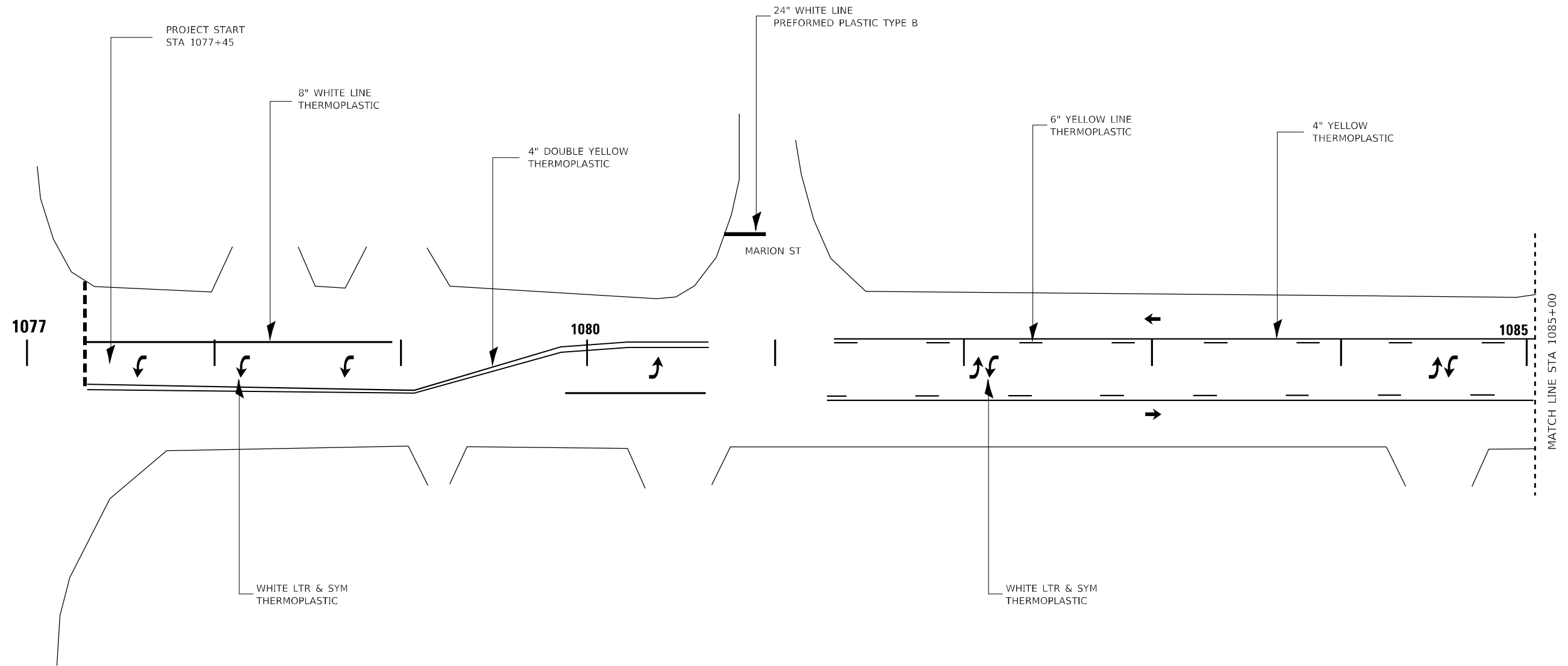


STA 1462+65

NOTES:

1. EXISTING 18" PIPE CULVERT SHALL BE DEWATERED AND CLEANED OF ALL FOREIGN MATERIALS
2. 12" CORRUGATED PVC PIPE WITH SMOOTH INTERIOR SHALL BE INSERTED INTO EXISTING 18" PIPE CULVERT AS SHOWN ON PLAN DETAIL.
3. THIS WORK WILL BE PAID FOR AT THE CONTRACT UNIT PER FOOT FOR INSERTION CULVERT LINER.

FILE NAME =	USER NAME = NOLASCOCJ	DESIGNED -	REVISED -	STATE OF ILLINOIS DEPARTMENT OF TRANSPORTATION	PROPOSED PIPE CULVERT DETAIL STA 1462+65		F.A.P. RTE.	SECTION	COUNTY	TOTAL SHEETS	SHEET NO.
pw:\planroom\dot\illinois.gov\PWIDOT\Documents\IDOT\offices\District 3\Projects\1366E\14\CADData\14eh\4\drain\	DRAWN -	REVISED -	615				118RS-3	BUREAU	27	18	
Default	PLOT SCALE = 1/10,000' / in.	CHECKED -	REVISED -		CONTRACT NO. 66E14						
	PLOT DATE = 1/29/2021	DATE -	REVISED -		SCALE:	SHEET	OF	SHEETS	STA.	TO STA.	ILLINOIS



MODEL: Default
 FILE NAME: p:\pub\mroom.dwt\illinois.gov\PWIDOT\Documents\DOT_Offices\District 3\Projects\0366E\14\CADD\0366E14.dwt\pmt.dgn

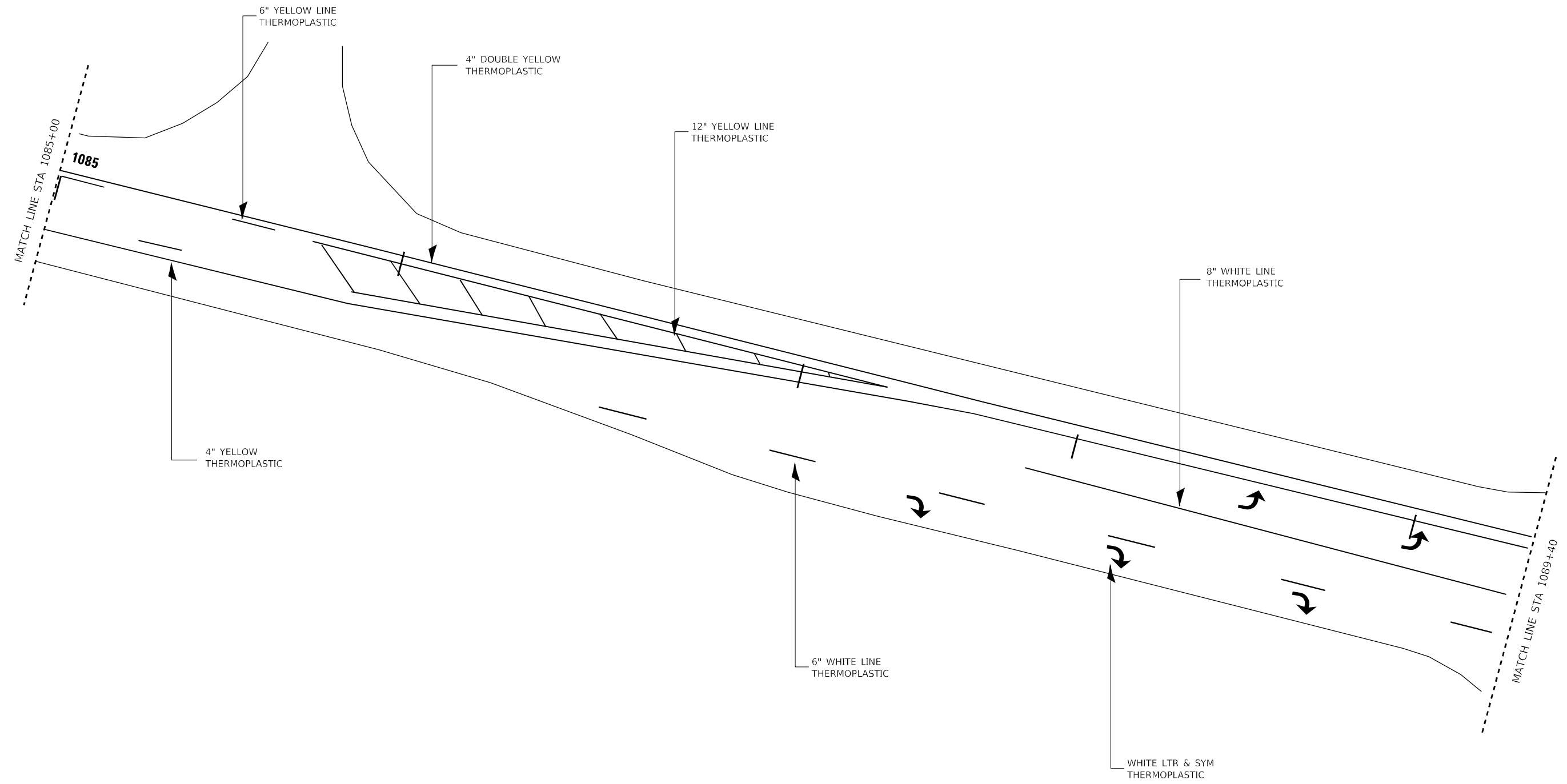
USER NAME = NOLASCOCJ	DESIGNED -	REVISED -
	DRAWN -	REVISED -
PLOT SCALE = 100,0000' / in.	CHECKED -	REVISED -
PLOT DATE = 1/29/2021	DATE -	REVISED -

**STATE OF ILLINOIS
DEPARTMENT OF TRANSPORTATION**

PAVEMENT MARKING DETAILS

SCALE: SHEET OF SHEETS STA. TO STA.

F.A.P. RTE.	SECTION	COUNTY	TOTAL SHEETS	SHEET NO.
615	118RS-3	BUREAU	27	19
CONTRACT NO. 66E14				
ILLINOIS FED. AID PROJECT				



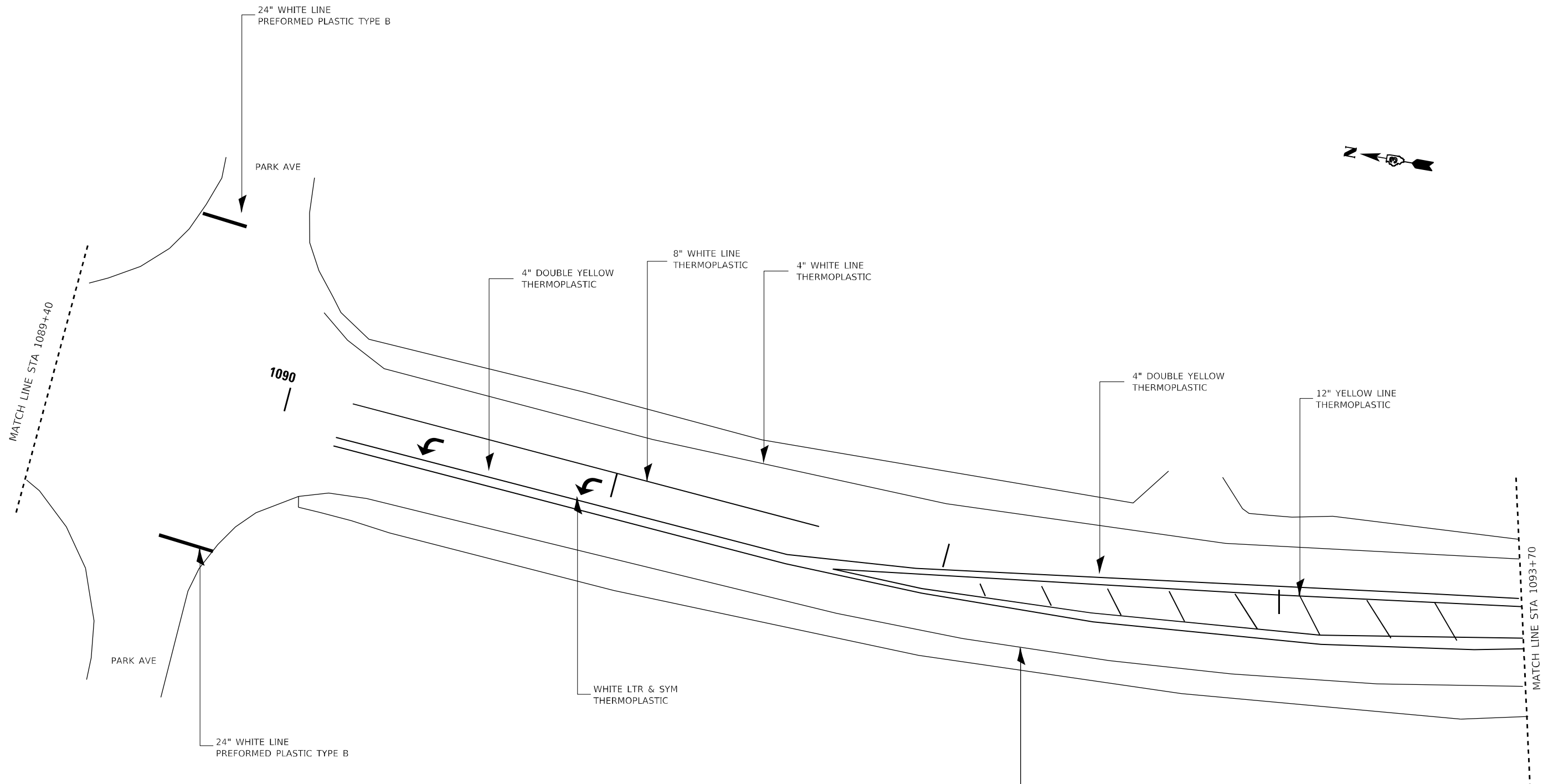
MODEL Path: \\p01\share\room\dot\illinois\gov\PIWIDOT\Documents\DOT_Offices\District_3\Projects\0366E\A\CADD\0366E114.dwg
 FILE Name: \\p01\share\room\dot\illinois\gov\PIWIDOT\Documents\DOT_Offices\District_3\Projects\0366E\A\CADD\0366E114.dwg

USER NAME = NOLASCOCJ	DESIGNED -	REVISED -
	DRAWN -	REVISED -
PLOT SCALE = 100,0000' / in.	CHECKED -	REVISED -
PLOT DATE = 1/29/2021	DATE -	REVISED -

**STATE OF ILLINOIS
DEPARTMENT OF TRANSPORTATION**

PAVEMENT MARKING DETAILS				
SCALE:	SHEET	OF	SHEETS	STA. TO STA.

F.A.P. RTE. 615	SECTION 118RS-3	COUNTY BUREAU	TOTAL SHEETS 27	SHEET NO. 20
CONTRACT NO. 66E14				
ILLINOIS FED. AID PROJECT				



MODEL: Default
 FILE NAME: p:\pub\harronm.dwt\illinois.gov\PWIDOT\Documents\DOT_Offices\District 3\Projects\10366E\10366E14.dwg

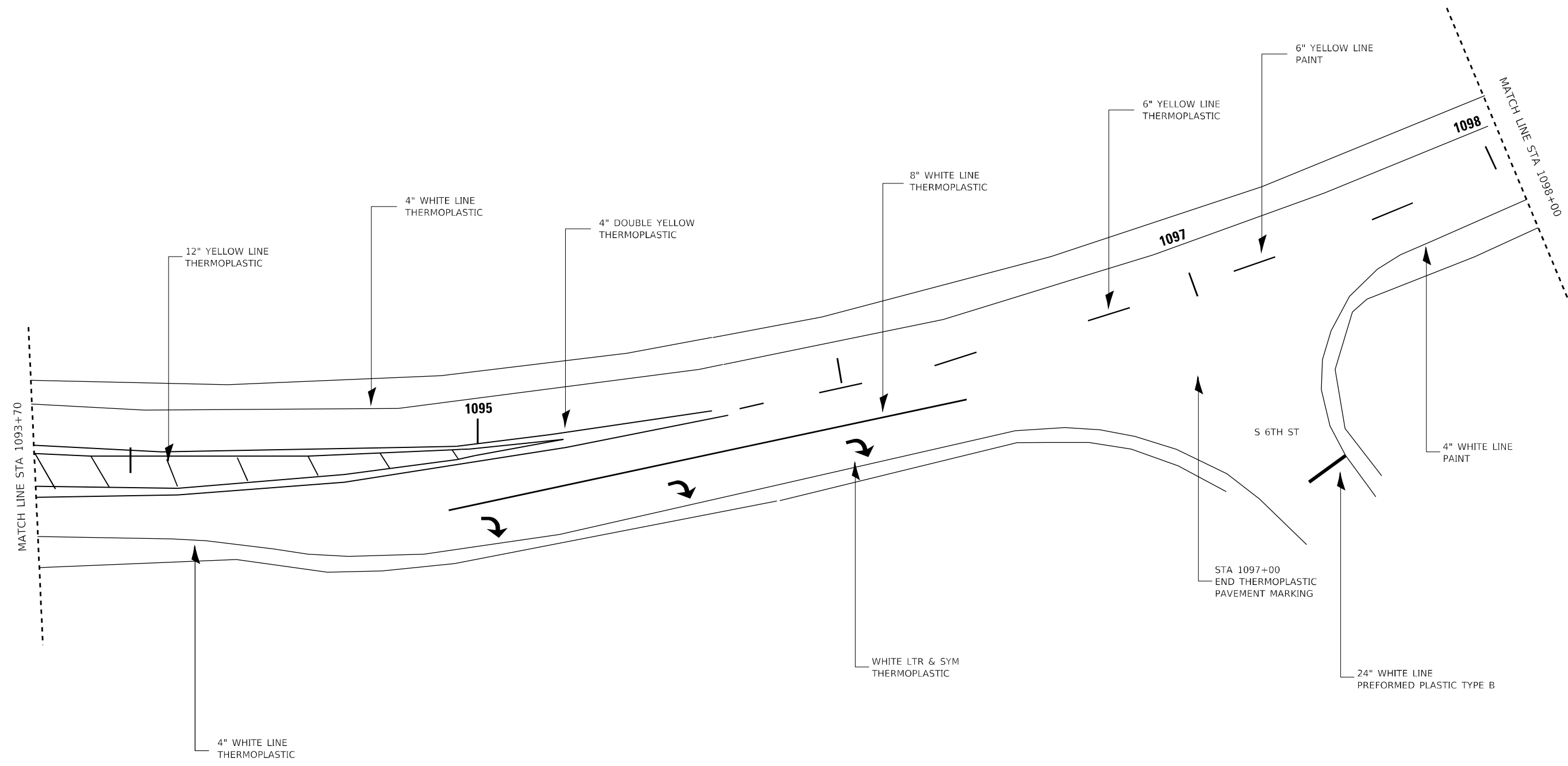
USER NAME = NOLASCOCJ	DESIGNED -	REVISED -
	DRAWN -	REVISED -
PLOT SCALE = 100,0000' / in.	CHECKED -	REVISED -
PLOT DATE = 1/29/2021	DATE -	REVISED -

STATE OF ILLINOIS
DEPARTMENT OF TRANSPORTATION

PAVEMENT MARKING DETAILS

SCALE: SHEET OF SHEETS STA. TO STA.

F.A.P. RTE.	SECTION	COUNTY	TOTAL SHEETS	SHEET NO.
615	118RS-3	BUREAU	27	21
CONTRACT NO. 66E14				
ILLINOIS FED. AID PROJECT				



MODEL: Default
 FILE NAME: p:\workroom\dot\illinois\pww\DOT\Documents\DOT - Offices\District 3\Projects\0366E\14\CADD\0366E14.dwg
 PROJECT: 0366E14

MATCH LINE STA 1093+70

MATCH LINE STA 1098+00

4" WHITE LINE THERMOPLASTIC

12" YELLOW LINE THERMOPLASTIC

4" WHITE LINE THERMOPLASTIC

4" DOUBLE YELLOW THERMOPLASTIC

8" WHITE LINE THERMOPLASTIC

6" YELLOW LINE THERMOPLASTIC

6" YELLOW LINE PAINT

4" WHITE LINE PAINT

1095

1097

1098

S 6TH ST

STA 1097+00
END THERMOPLASTIC
PAVEMENT MARKING

WHITE LTR & SYM
THERMOPLASTIC

24" WHITE LINE
PERFORMED PLASTIC TYPE B

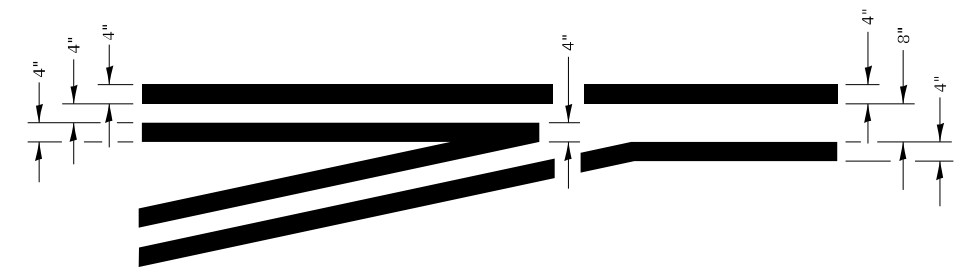
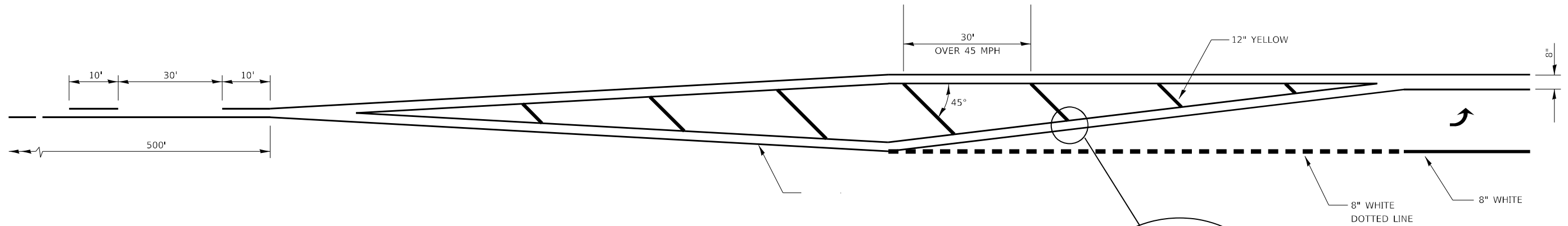
USER NAME = NOLASCOCJ	DESIGNED -	REVISED -
	DRAWN -	REVISED -
PLOT SCALE = 100,0000' / in.	CHECKED -	REVISED -
PLOT DATE = 1/29/2021	DATE -	REVISED -

**STATE OF ILLINOIS
DEPARTMENT OF TRANSPORTATION**

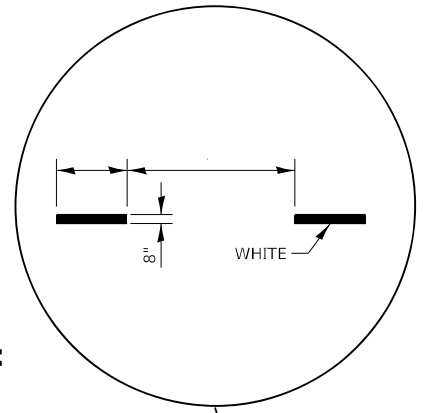
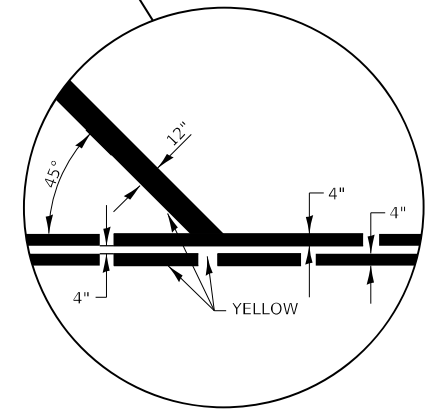
PAVEMENT MARKING DETAILS

SCALE: SHEET OF SHEETS STA. TO STA.

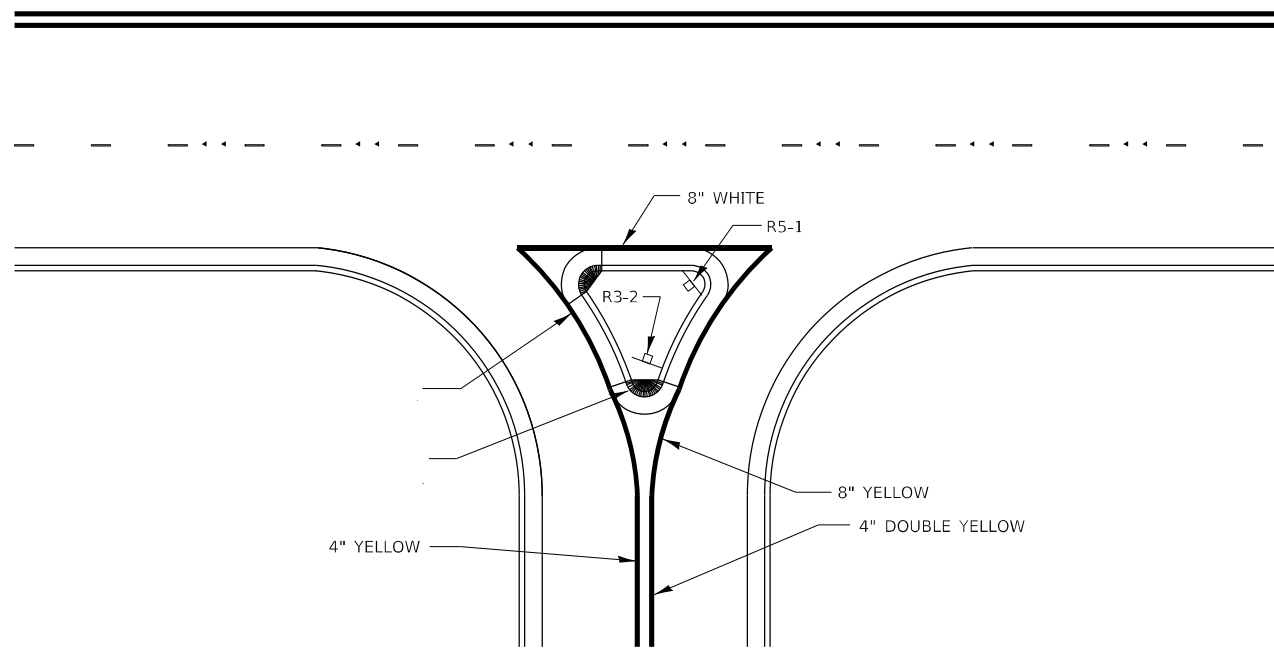
F.A.P. RTE.	SECTION	COUNTY	TOTAL SHEETS	SHEET NO.
615	118RS-3	BUREAU	27	22
CONTRACT NO. 66E14				
ILLINOIS FED. AID PROJECT				



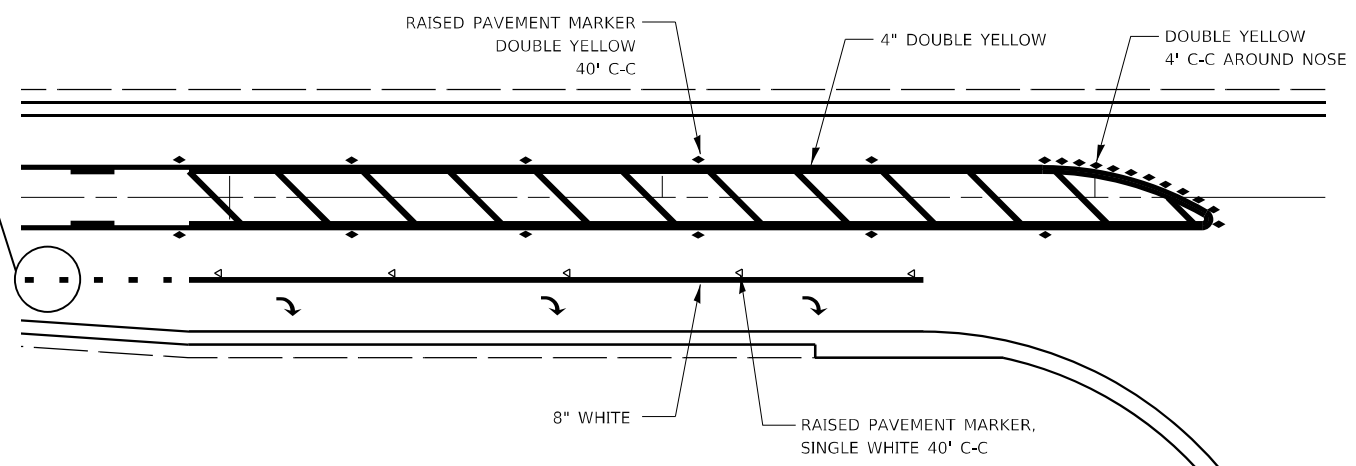
**TYPICAL APPLICATION
@ LEFT TURN LANES**



**ADVANCE AND INTERSECTION LANE
DIVIDER LINES**



RIGHT IN RIGHT OUT ACCESS PAVEMENT MARKING



**RAISED REFLECTIVE AND PAVEMENT MARKERS
@ RIGHT TURN LANE**

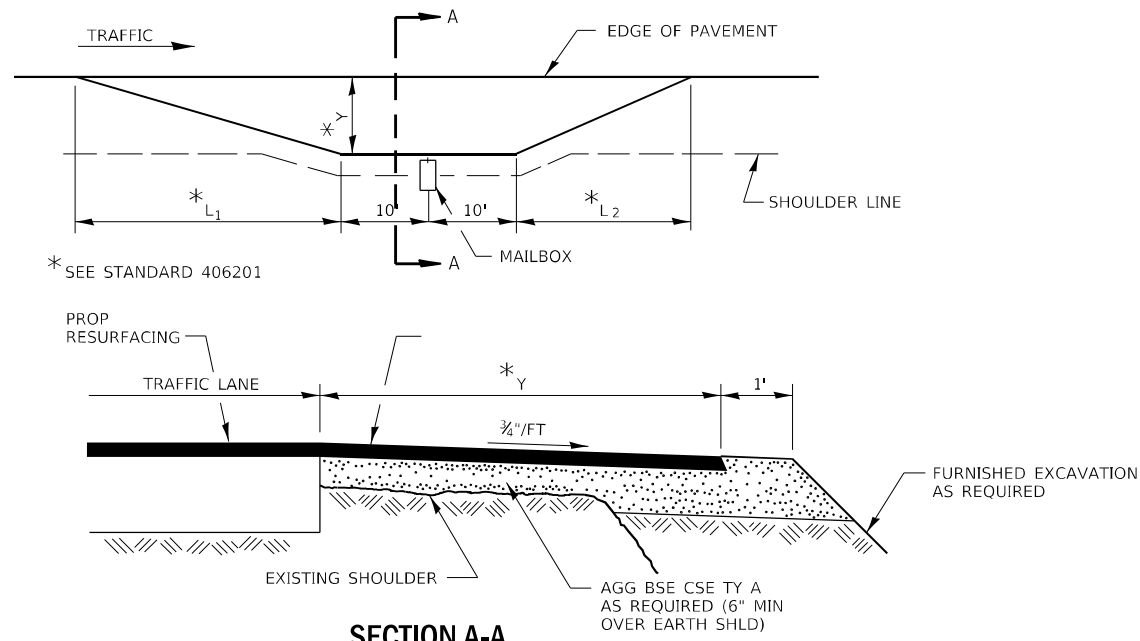
MODEL: Default
 FILE NAME: p:\m\hammon.dwt\illinois\pww\DOT\Documents\DOT - Office\District 3\Projects\ID366E\A\CADD\DATA\366E14.dwg
 PROJECT: ID366E14

USER NAME = NOLASCOCJ	DESIGNED -	REVISED -
	DRAWN -	REVISED -
PLOT SCALE = 100,0000' / in.	CHECKED -	REVISED -
PLOT DATE = 1/29/2021	DATE -	REVISED -

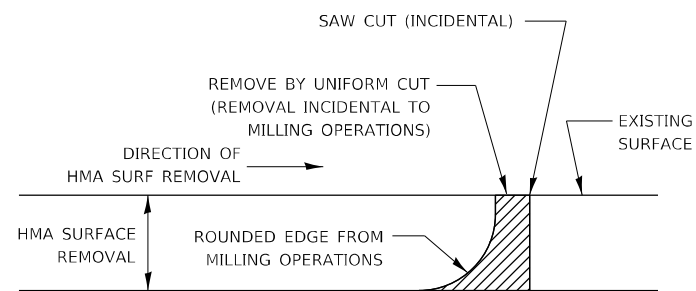
**STATE OF ILLINOIS
DEPARTMENT OF TRANSPORTATION**

DETAILS				
SCALE:	SHEET	OF	SHEETS	STA. TO STA.

F.A.P. RTE.	SECTION	COUNTY	TOTAL SHEETS	SHEET NO.
615	118RS-3	BUREAU	27	25
CONTRACT NO. 66E14				
ILLINOIS FED. AID PROJECT				

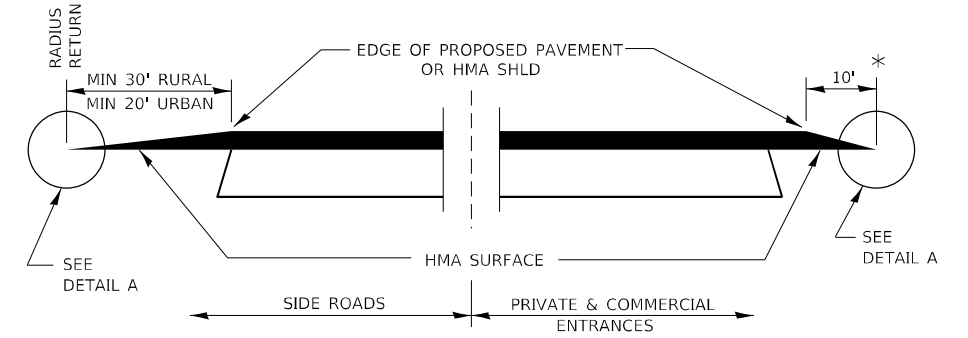


SECTION A-A
MAILBOX TURNOUT DETAILS

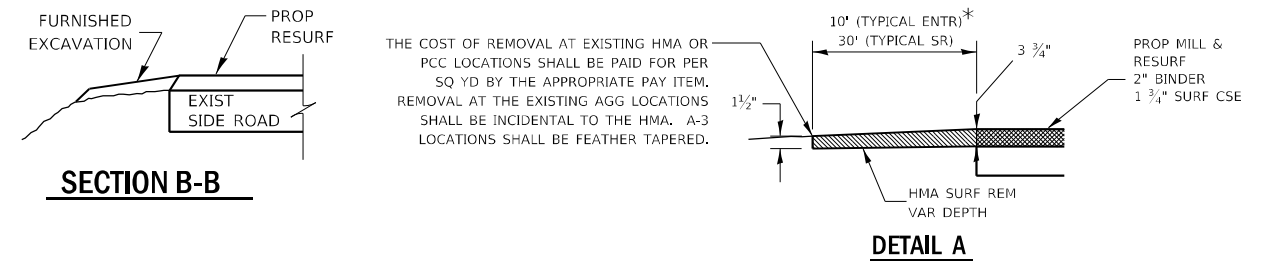


NOTE:
WHEN MILLING OPERATIONS PRODUCE A ROUNDED EDGE, THEN A SAW CUT SHALL BE USED TO MANUFACTURE A PERPENDICULAR EDGE AS SHOWN IN THE DETAIL. THE ENGINEER SHALL BE THE SOLE JUDGE CONCERNING THE USE OF THIS DETAIL.

HMA DETAIL AT BUTT JOINTS

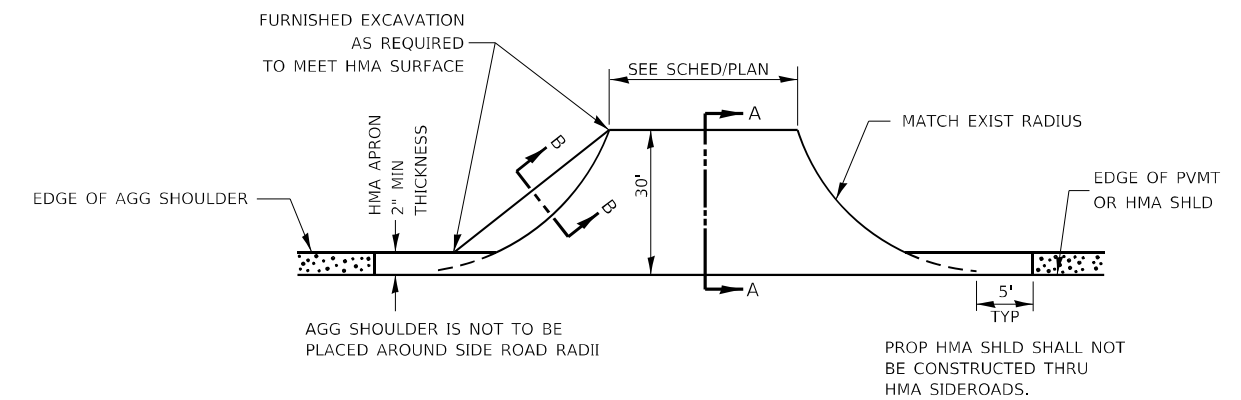


SECTION A-A
DETAILS AT ENTRANCES & SIDE ROADS

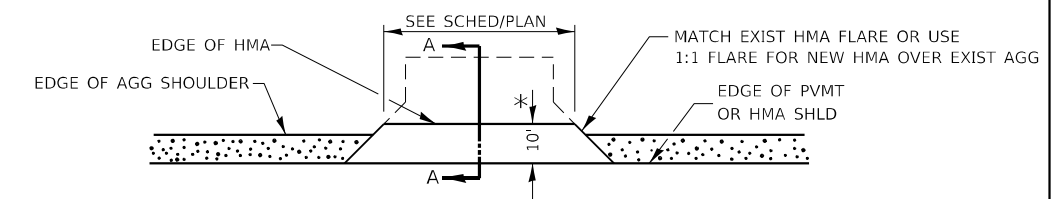


SECTION B-B

DETAIL A



PLAN AT SIDE ROADS



PLAN AT PRIVATE & COMMERCIAL ENTRANCES

(DO NOT RESURFACE FIELD ENTRANCES)

* PROPOSED HMA RESURFACING AT PUBLIC EDUCATIONAL FACILITY ENTRANCES SHALL BE EXTENDED TO THE RIGHT-OF-WAY LIMITS.

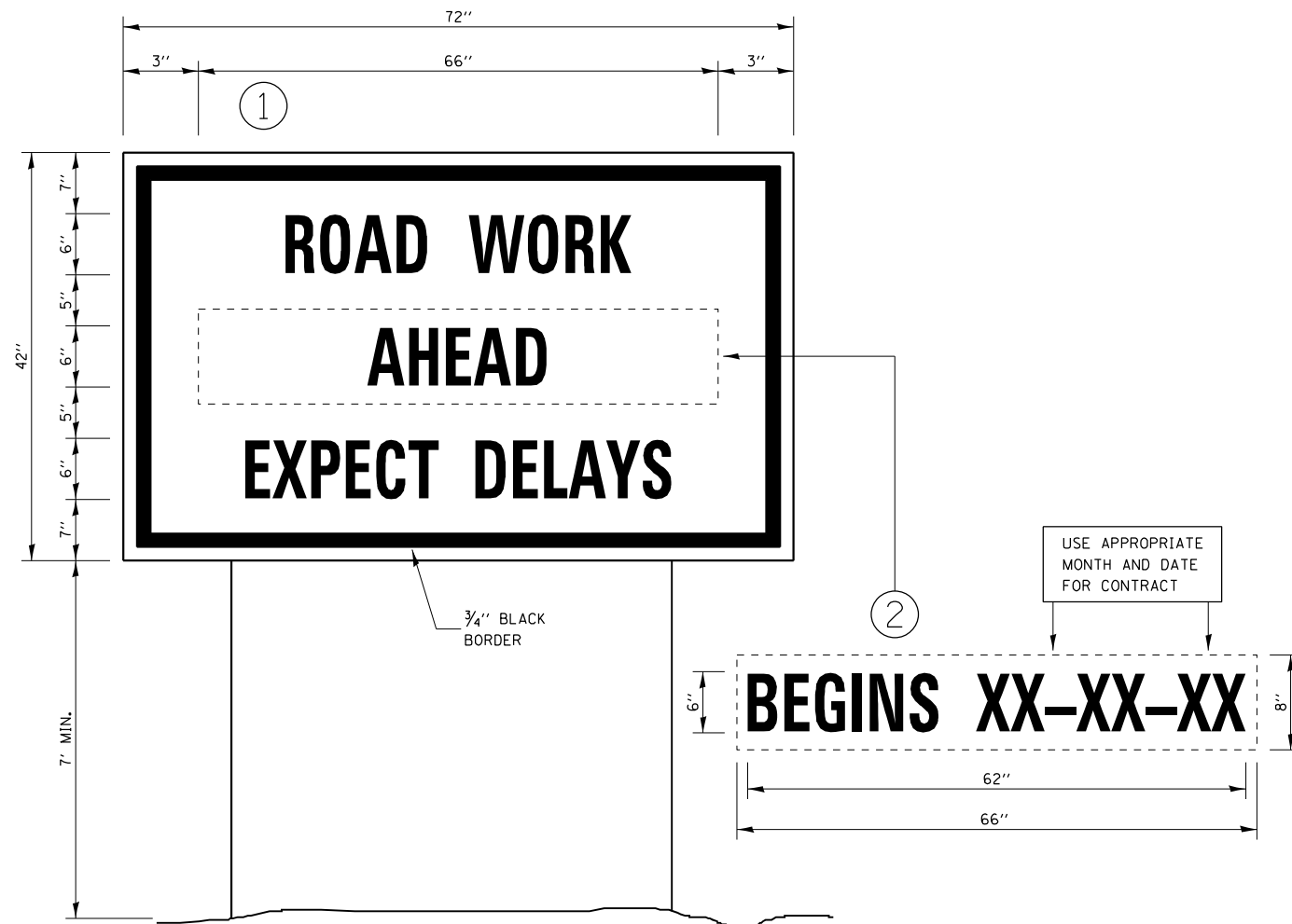
MODEL: Default
FILE NAME: p:\pub\mtrnrom.edu\illinois.gov\PIWDOT\Documents\DOT_Office\District_3\Projects\0366E\14\CADD\14-0366E-14-01-01-01.dgn

USER NAME = NOLASCOCJ	DESIGNED -	REVISED -
	DRAWN -	REVISED -
PLOT SCALE = 100,0000' / in.	CHECKED -	REVISED -
PLOT DATE = 1/29/2021	DATE -	REVISED -

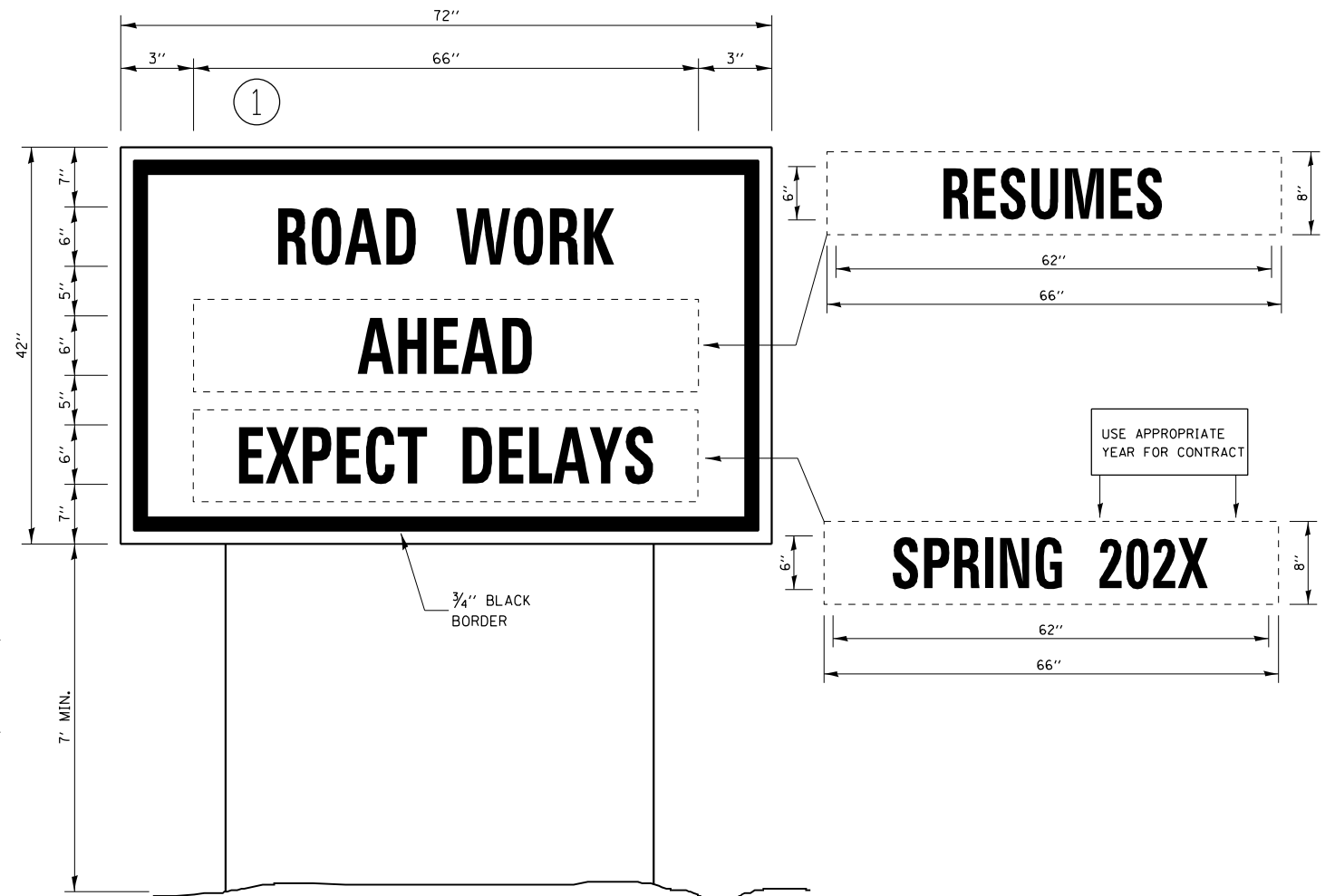
STATE OF ILLINOIS
DEPARTMENT OF TRANSPORTATION

DETAILS	
SCALE:	SHEET OF SHEETS STA. TO STA.

F.A.P. RTE.	SECTION	COUNTY	TOTAL SHEETS	SHEET NO.
615	118RS-3	BUREAU	27	26
CONTRACT NO. 66E14				
ILLINOIS FED. AID PROJECT				



TEMPORARY INFORMATION SIGNING



WINTER SHUT DOWN SIGNING

NOTES:

1. USE 6" D BLACK LETTERING ON FLOURESENT ORANGE BACKGROUND.
2. ERECT SIGNS AT LOCATIONS IN ADVANCE OF THE "ROAD CONSTRUCTION AHEAD" SIGNS AS DIRECTED BY THE ENGINEER.
3. ERECT SIGN ① WITH INSTALLED PANEL ② A MINIMUM OF ONE WEEK PRIOR TO THE START OF THE LANE CLOSURE.
4. REMOVE PANEL ② ON THAT DATE.
5. SEE SPECIAL PROVISION "TEMPORARY INFORMATION SIGNING" FOR ADDITIONAL INFORMATION.
6. WILL BE PAID FOR PER SQ FT AS "TEMPORARY INFORMATION SIGNING". EACH SIGN = 21 SQ FT AND THE DATE PANEL ② WILL NOT BE MEASURED SEPARATELY FOR PAYMENT.

MODEL Path: \\pilot01\pub\pubroom\dot\illinois\gov\PIWDOT\Documents\DOT_Offices\District_3\Projects\0366E\A\CADD\0366E14\14-14-2021\14-14-2021.dgn
 FILE NAME: 0366E14.dwg

USER NAME = NOLASCOCJ	DESIGNED -	REVISED -
PLOT SCALE = 100,0000' / in.	DRAWN -	REVISED -
PLOT DATE = 1/29/2021	CHECKED -	REVISED -
	DATE -	REVISED -

**STATE OF ILLINOIS
DEPARTMENT OF TRANSPORTATION**

DETAILS				
SCALE:	SHEET	OF	SHEETS	STA. TO STA.

F.A.P. RTE.	SECTION	COUNTY	TOTAL SHEETS	SHEET NO.
615	118RS-3	BUREAU	27	27
CONTRACT NO. 66E14				
ILLINOIS FED. AID PROJECT				