

STATE OF ILLINOIS  
DEPARTMENT OF TRANSPORTATION

F.A.P. RTE.	SECTION	COUNTY	TOTAL SHEETS	SHEET NO.
332	(5, K) SFY, Y	ILLINOIS	8	1
CONTRACT NO. 66L30			KANKAKEE & IROQUOIS	

**INDEX OF SHEETS**

- 1 COVER SHEET
- 2 GENERAL NOTES
- 3-4 SUMMARY OF QUANTITIES
- 5 TYPICAL SECTIONS
- 6-7 SCHEDULES
- 8 DETAILS

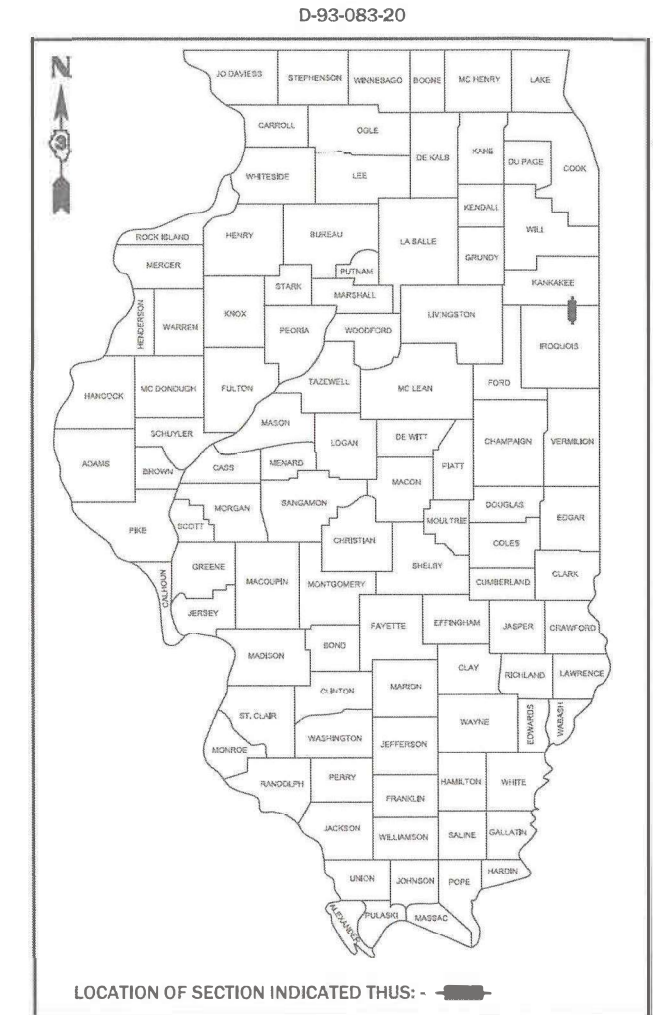
**HIGHWAY STANDARDS**

- 000001-08 STANDARD SYMBOLS, ABBREVIATIONS AND PATTERNS
- 001006 DECIMAL OF AN INCH AND OF A FOOT
- 406201-01 MAILBOX TURNOUT
- 482001-02 HMA SHOULDER ADJACENT TO FLEXIBLE PAVEMENT
- 482006-03 HMA SHOULDER ADJACENT TO RIGID PAVEMENT
- 642006-01 SHOULDER RUMBLE STRIPS, 8 INCH
- 701006-05 OFF-ROAD OPERATIONS 2L, 2W, 15' (4.5 m) TO 24" (600 mm) FROM PAVEMENT EDGE
- 701311-03 LANE CLOSURE, 2L, 2W, MOVING OPERATIONS - DAY ONLY
- 701326-04 LANE CLOSURE, 2L, 2W, PAVEMENT WIDENING, FOR SPEEDS ≥ 45 MPH
- 701901-08 TRAFFIC CONTROL DEVICES

# PROPOSED HIGHWAY PLANS

FAP ROUTE 332 (IL 1)  
SECTION (5, K) SFY, Y  
PROJECT: HSIP - M6H7 (210)  
SHOULDER WIDENING AND RUMBLE STRIPS  
KANKAKEE & IROQUOIS COUNTIES

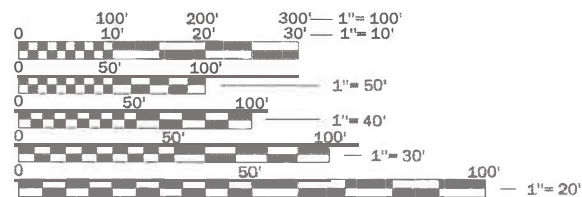
C-93-118-20



IL 1 - OTHER ARTERIAL  
2017 ADT = 2450  
P.V. = 90.2% S.U. = 2.9% M.U. = 6.9%

STATE OF ILLINOIS  
DEPARTMENT OF TRANSPORTATION

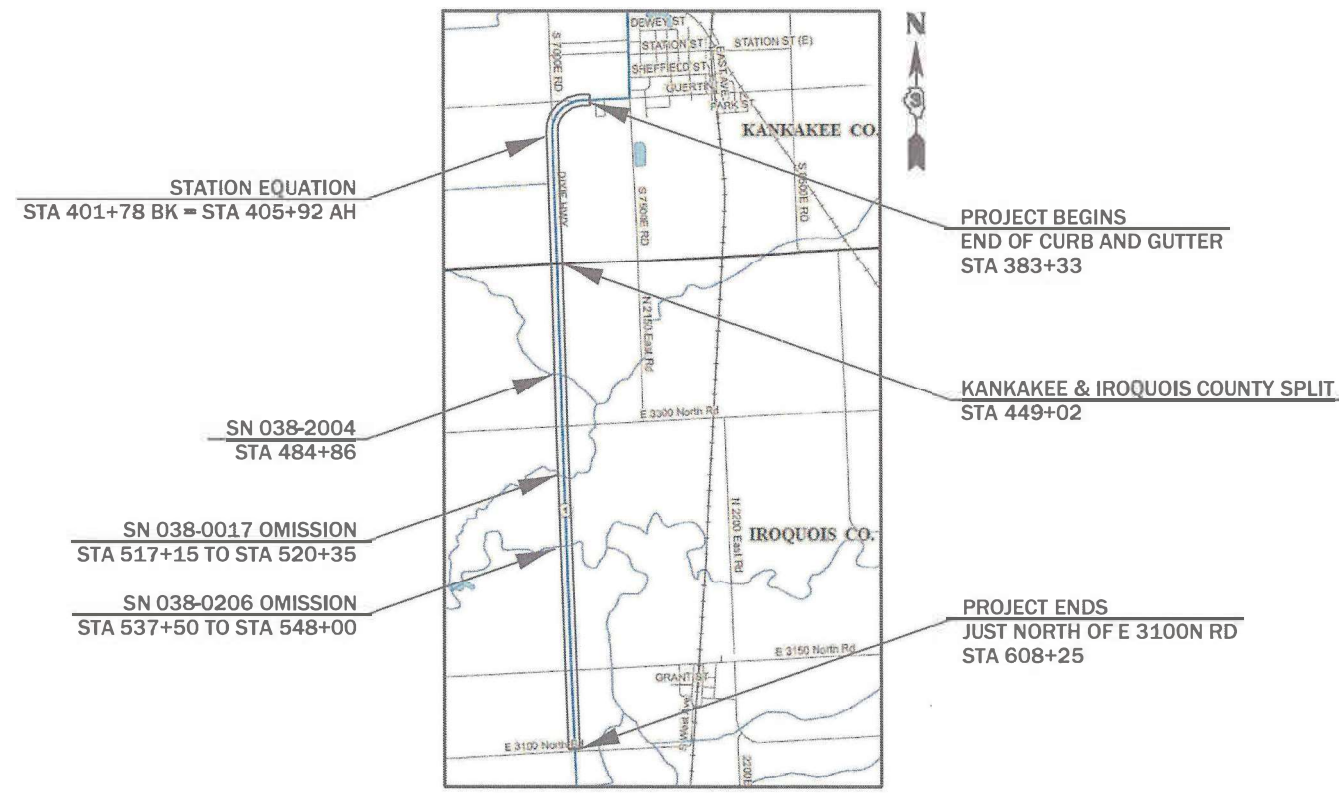
SUBMITTED January 29<sup>th</sup> 2021  
*Joe Kannel*  
REGIONAL ENGINEER  
March 19, 2021  
*Joe Kannel*  
ENGINEER OF DESIGN AND ENVIRONMENT  
March 19, 2021  
*James J. ...*  
DIRECTOR OF HIGHWAYS PROJECT IMPLEMENTATION '13



FULL SIZE PLANS HAVE BEEN PREPARED USING STANDARD ENGINEERING SCALES. REDUCED SIZED PLANS WILL NOT CONFORM TO STANDARD SCALES. IN MAKING MEASUREMENTS ON REDUCED PLANS, THE ABOVE SCALES MAY BE USED.

J.U.L.I.E.  
JOINT UTILITY LOCATION INFORMATION FOR EXCAVATION  
1-800-892-0123  
OR 811

PROJECT ENGINEER: JOE KANNEL, P.E.  
UNIT CHIEF: MARC BUDZYNSKI, P.E.  
DISTRICT 3 NO. (815) 434-6131  
CONTRACT NO. 66L30



GROSS LENGTH = 22,078 FT. = 4.18 MILES  
NET LENGTH = 20,354 FT. = 3.85 MILES

PRINTED BY THE AUTHORITY  
OF THE STATE OF ILLINOIS



MODEL: \\MODELM\JM\FILES  
 FILE: \\MODELM\JM\WORKSPACE\66L30\66L30-PT-COVER.dgn

CODE NO.	ITEM	UNIT	TOTAL QUANTITY	CONSTRUCTION CODE	
				90% FED 10% STATE	
				KANKAKEE CO.	IROQUOIS CO.
				SAFETY	SAFETY
				0021	0021
				RURAL	RURAL
40600290	BITUMINOUS MATERIALS (TACK COAT)	POUND	8136	2425	5711
40800050	INCIDENTAL HOT-MIX ASPHALT SURFACING	TON	4.3	1.3	3
44000157	HOT-MIX ASPHALT SURFACE REMOVAL, 2"	SQ YD	36.8	11.6	25.2
48203029	HOT-MIX ASPHALT SHOULDERS, 8"	SQ YD	18030	5373	12657
64200108	SHOULDER RUMBLE STRIPS, 8 INCH	FOOT	40549	12085	28464
* 66900200	NON-SPECIAL WASTE DISPOSAL	CU YD	45	45	0
* 66900530	SOIL DISPOSAL ANALYSIS	EACH	1	1	0
* 66901001	REGULATED SUBSTANCES PRE-CONSTRUCTION PLAN	LSUM	1.0	1.0	0.0
* 66901003	REGULATED SUBSTANCES FINAL CONSTRUCTION REPORT	LSUM	1.0	1.0	0.0
* 66901006	REGULATED SUBSTANCES MONITORING	CAL DA	2	2	0
67100100	MOBILIZATION	L SUM	1.0	0.5	0.5
70100500	TRAFFIC CONTROL AND PROTECTION, STANDARD 701326	L SUM	1.0	0.5	0.5
70103815	TRAFFIC CONTROL SURVEILLANCE	CAL DA	5	1.5	3.5
* 78001110	PAINT PAVEMENT MARKING - LINE 4"	FOOT	86578	24170	62408

\*= SPECIALTY ITEM

USER NAME = budzynskim	DESIGNED -	REVISED -
	DRAWN -	REVISED -
PLOT SCALE = 100.0000 ' / in.	CHECKED -	REVISED -
PLOT DATE = 1/29/2021	DATE -	REVISED -

**STATE OF ILLINOIS  
DEPARTMENT OF TRANSPORTATION**

**SUMMARY OF QUANTITIES**

SCALE: SHEET OF SHEETS STA. TO STA.

*KANKAKEE & IROQUOIS	
F.A.P. RTE.	SECTION
332	(5, K) SFY, Y
COUNTY	TOTAL SHEETS
+	8
SHEET NO.	
3	
CONTRACT NO. 66L30	
ILLINOIS	FED. AID PROJECT

CODE NO.	ITEM	UNIT	TOTAL QUANTITY	CONSTRUCTION CODE	
				90% FED 10% STATE	
				KANKAKEE CO.	IROQUOIS CO.
				SAFETY	SAFETY
				0021	0021
				RURAL	RURAL
X080001	SHOULDER REMOVAL (SPECIAL)	SQ YD	18030	5373	12657
Z0030850	TEMPORARY INFORMATION SIGNING	SQ FT	42	21	21

MODEL: \\MODELMANETS  
 FILE: \\manets\_csm\work\aid\01budzynskim\070366\0366L30-ph-cover.dgn

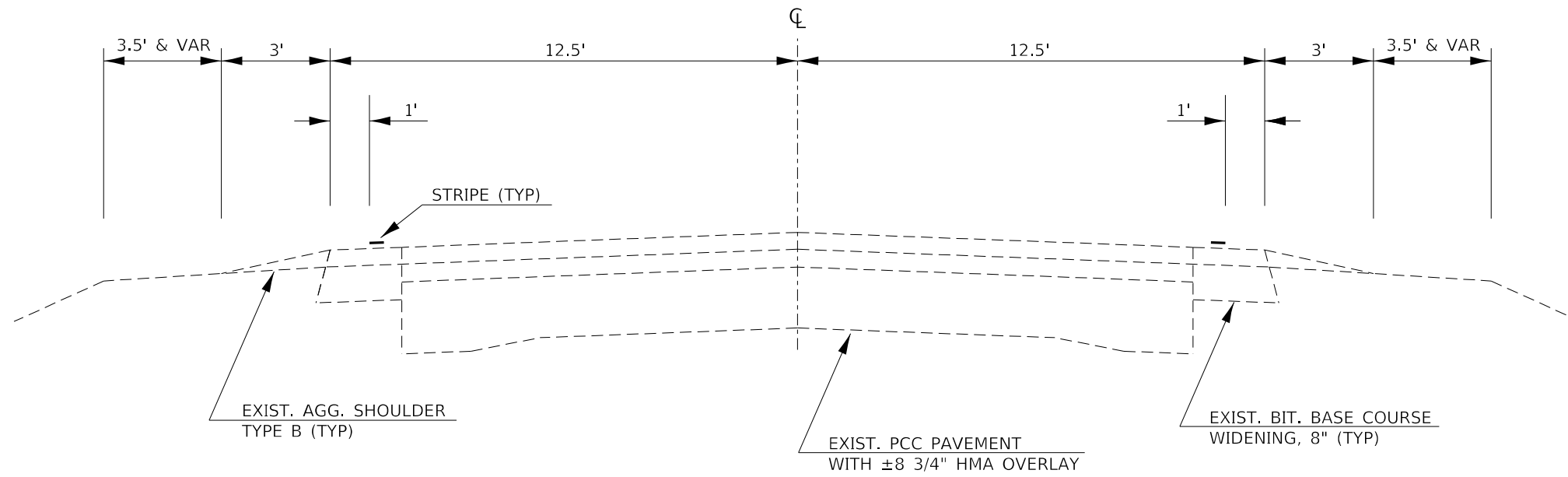
USER NAME = budzynskim	DESIGNED -	REVISED -
	DRAWN -	REVISED -
PLOT SCALE = 100.0000 ' / in.	CHECKED -	REVISED -
PLOT DATE = 1/29/2021	DATE -	REVISED -

**STATE OF ILLINOIS  
DEPARTMENT OF TRANSPORTATION**

**SUMMARY OF QUANTITIES**

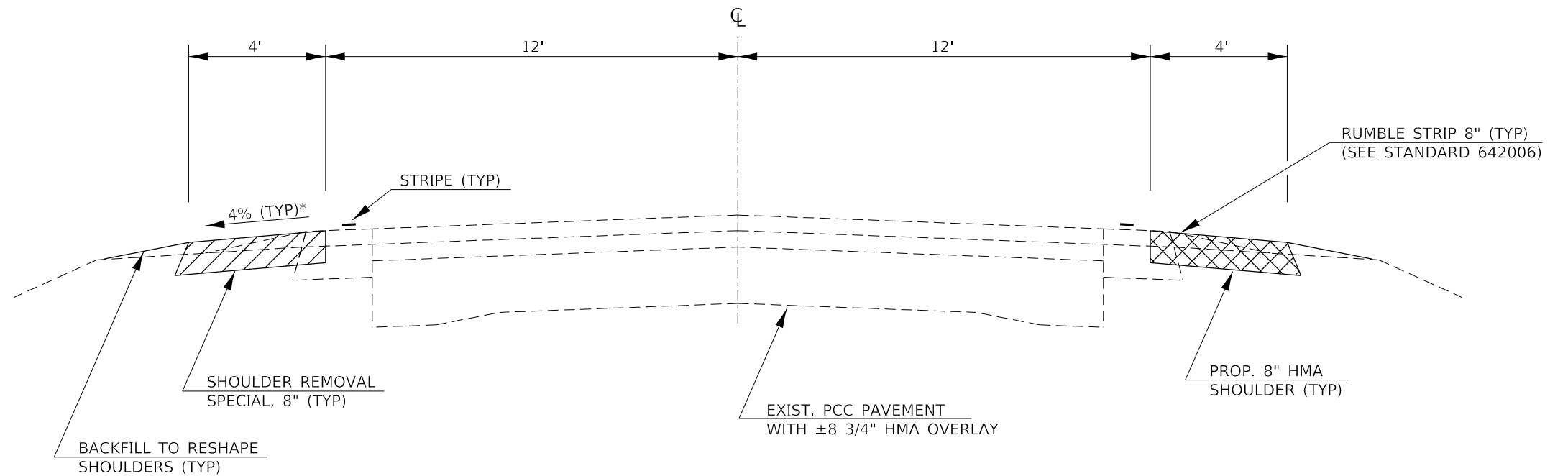
SCALE: SHEET OF SHEETS STA. TO STA.

F.A.P. RTE.	SECTION	COUNTY	TOTAL SHEETS	SHEET NO.
332	(5, K) SFY, Y	+	8	4
CONTRACT NO. 66L30				
ILLINOIS FED. AID PROJECT				



**EXISTING TYPICAL SECTION**

STA 383+33 TO 401+78  
 STA 401+78 BK = STA 405+92 AH  
 STA 405+92 TO STA 608+25



**PROPOSED TYPICAL SECTION**

\*REFER TO STANDARD 482001 IN  
 AREAS OF SUPERELEVATION

STA 383+33 TO 401+78  
 STA 401+78 BK = STA 405+92 AH  
 STA 405+92 TO STA 608+25

MODEL: \\MODELS\MAR15  
 FILE: MAR15 - 332 - work\sidebat\budzynskim\070366\0366L30-511-cover.dgn

USER NAME = budzynskim	DESIGNED -	REVISED -
	DRAWN -	REVISED -
PLOT SCALE = 100,0000' / in.	CHECKED -	REVISED -
PLOT DATE = 1/29/2021	DATE -	REVISED -

**STATE OF ILLINOIS  
 DEPARTMENT OF TRANSPORTATION**

<b>TYPICAL SECTIONS</b>	
SCALE:	SHEET OF SHEETS STA. TO STA.

F.A.P. RTE.	SECTION	COUNTY	TOTAL SHEETS	SHEET NO.
332	(5, K) SFY, Y	*	8	5
CONTRACT NO. 66L30				
ILLINOIS FED. AID PROJECT				

\*KANKAKEE & BROOKINGS

SHOULDER REMOVAL & REPLACEMENT SCHEDULE									
LOCATION		SIDE	LENGTH	SHOULDER REMOVAL (SPECIAL)	HMA SHOULDERS 8"	BIT MTLs TACK COAT	SHOULDER RUMBLE STRIPS, 8"	*PAINT MARKING WHITE 4"	PVMT
STA	TO STA	LT / RT	FOOT	SQ YD	SQ YD	POUND	FOOT	FOOT	
<b>KANKAKEE COUNTY</b>									
383+33	TO 389+08	LT & RT	575	512	512	230	1150	2300	
389+08	TO 390+25	LT	117	52	52	24	117	234	
7000 S RD = STA 389+74									
390+25	TO 397+81	LT & RT	756	672	672	303	1512	3024	
397+81	TO 398+89	LT	108	48	48	22	108	216	
7000 E RD = STA 398+35									
398+89	TO 401+78	LT & RT	289	257	257	116	578	1156	
STATION EQUATION STA 401+78 BK = STA 405+92 AH									
405+92	TO 449+02	LT & RT	4310	3832	3832	1724	8620	17240	
<b>KANKAKEE SUBTOTAL</b>			<b>6155</b>	<b>5373</b>	<b>5373</b>	<b>2419</b>	<b>12085</b>	<b>24170</b>	
<b>IROQUOIS COUNTY</b>									
449+02	TO 484+86	LT & RT	3584	3186	3186	1434	7168	14336	
SN 038-2004 = STA 484+86									
484+86	TO 501+90	LT & RT	1704	1515	1515	682	3408	6816	
E 3300 N RD = STA 502+19									
502+50	TO 517+15	LT & RT	1465	1303	1303	586	2930	5860	
STRUCTURE OMISSION SN 038-0017 = STA 518+75									
520+35	TO 535+72	LT & RT	1537	1367	1367	615	3074	6148	
535+72	TO 537+50	RT	178	80	80	36	178	356	
STRUCTURE OMISSION SN 038-0206 = STA 541+80									
548+00	TO 578+48	LT & RT	3048	2710	2710	1220	6096	12192	
578+48	TO 580+00	LT	152	68	68	31	152	304	
580+00	TO 581+32	LT & RT	132	118	118	53	264	528	
581+32	TO 581+48	RT	16	8	8	4	16	32	
E 3150 N RD = STA 581+90									
582+30	TO 582+42	RT	12	6	6	3	12	24	
582+42	TO 608+25	LT & RT	2583	2296	2296	1034	5166	10332	
<b>IROQUOIS SUBTOTAL</b>			<b>14411</b>	<b>12657</b>	<b>12657</b>	<b>5698</b>	<b>28464</b>	<b>62408</b>	
<b>TOTAL</b>			<b>20566</b>	<b>18030</b>	<b>18030</b>	<b>8117</b>	<b>40549</b>	<b>86578</b>	

\*QUANTITY REPRESENTS TWO SEPARATE APPLICATIONS

MODEL: \\MODELM\MAILS  
FILE: \\MODELM\MAILS\work\shd\shd\budzynskim\070368\0368L30-sh-covr.dgn

USER NAME = budzynskim	DESIGNED -	REVISED -	<b>STATE OF ILLINOIS DEPARTMENT OF TRANSPORTATION</b>	<b>SCHEDULES</b>				F.A.P. RTE.	SECTION	COUNTY	TOTAL SHEETS	SHEET NO.	
PLOT SCALE = 100,0000' / in.	DRAWN -	REVISED -		SCALE:	SHEET	OF	SHEETS	STA.	TO STA.	332	(5, K) SFY, Y	8	6
PLOT DATE = 1/29/2021	CHECKED -	REVISED -		CONTRACT NO. 66L30									
	DATE -	REVISED -		ILLINOIS FED. AID PROJECT									

MAILBOX TURNOUT SCHEDULE				
STA / SIDE		HMA SURF REMOVAL 2"	INCIDENTAL HMA SURF 2"	BIT MTLs TACK COAT
		SQ YD	TON	POUND
<b>KANKAKEE</b>				
418+32	RT	11.6	1.3	6
<b>SUBTOTAL</b>		<b>11.6</b>	<b>1.3</b>	<b>6</b>
<b>IROQUOIS</b>				
465+08	RT	10.4	1.2	5
491+90	RT	7.4	0.9	4
547+44	LT	NO WORK		
550+74	RT	7.4	0.9	4
579+00	RT	NO WORK		
<b>SUBTOTAL</b>		<b>25.2</b>	<b>3.0</b>	<b>13</b>
<b>TOTAL</b>		<b>36.8</b>	<b>4.3</b>	<b>19</b>

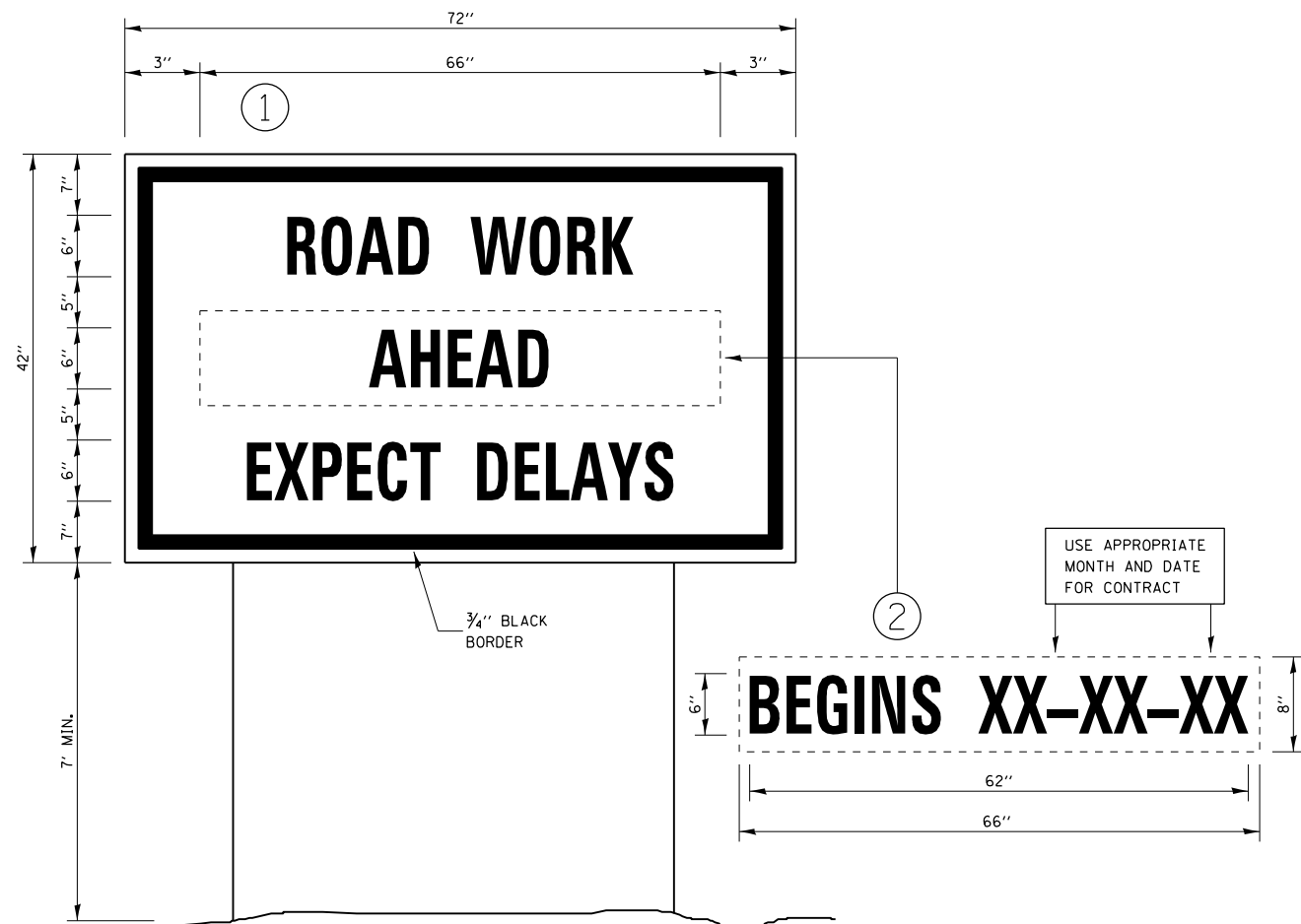
THE FIRST 4 FEET OF THE MBTO ADJACENT TO THE TRAVELED WAY IS PAID AS SHOULDER REMOVAL (SPECIAL) AND HMA SHOULDERS 8". THE REMAINING AREA OF THE MBTO IS PAID AS HMA SURFACE REMOVAL 2" AND INCIDENTAL HMA SURFACE 2".

SURVEY MONUMENT TABLE					
GPS NUMBER	DESCRIPTION	EXISTING MONUMENT TYPE	PROPOSED MONUMENT TYPE	MONUMENT RECORD TO BE RECORDED	RESPONSIBILITY
N/A	NO CENTERLINE CONTROL OR SECTION CORNER PERMANENT SURVEY MARKERS TO BE SET	N/A	N/A	N/A	N/A
<p>ALL KNOWN PERMANENT SURVEY MARKERS OR LAND SURVEY MONUMENTS ARE LOCATED ON THE ROAD SURFACE AND WILL NOT BE DISTURBED BY SHOULDER WIDENING AND RUMBLE STRIP WORK. UNKNOWN MONUMENTS MAY EXIST, AND IF FOUND THE R.E. MUST TIE THEM AND REQUEST PLATS AND PLANS PERSONNEL TO ANALYZE AND GPS ANY MONUMENT SUBJECT TO DAMAGE OR DESTRUCTION FROM THE PROPOSED WORK, AND INFORM THEM TO RESET THOSE MONUMENTS UPON JOB COMPLETION. THE R.E. IS TO INFORM THE PLATS AND PLANS SECTION TO SEARCH FOR ADDITIONAL MONUMENTS IF THE JOB LIMITS ARE EXPANDED DURING CONSTRUCTION. NO MONUMENT RECORDS WILL BE REQUIRED FOR THIS JOB.</p>					

MODEL: 440DEF1M4M1E5  
 FILE: Mailbox\_Cover.dwg  
 User: budzynskim  
 Date: 1/29/2021

USER NAME = budzynskim	DESIGNED -	REVISED -	<b>STATE OF ILLINOIS DEPARTMENT OF TRANSPORTATION</b>	<b>SCHEDULES</b>		F.A.P. RTE.	SECTION	COUNTY	TOTAL SHEETS	SHEET NO.	
PLOT SCALE = 100,0000' / in.	CHECKED -	REVISED -				332	(5, K) SFY, Y	*	8	7	
PLOT DATE = 1/29/2021	DATE -	REVISED -		SCALE:	SHEET OF SHEETS	STA. TO STA.	CONTRACT NO. 66L30				
						ILLINOIS FED. AID PROJECT					

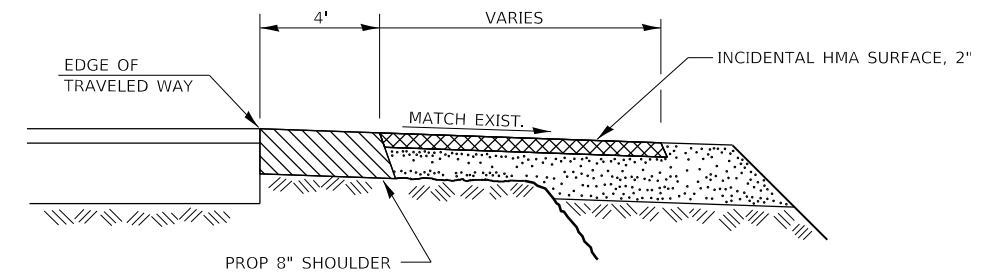
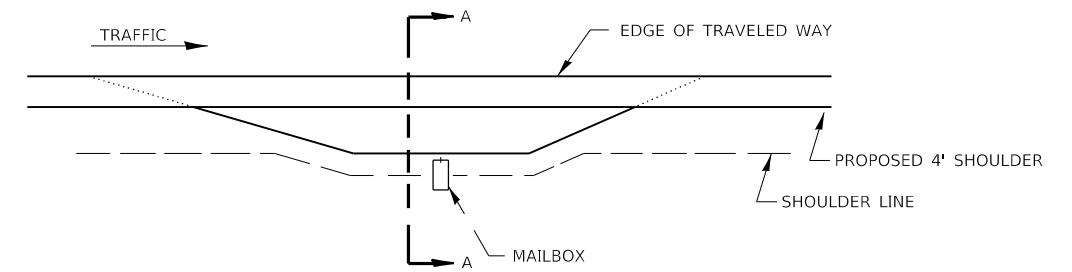
\*KANKAKEE & IROQUOIS



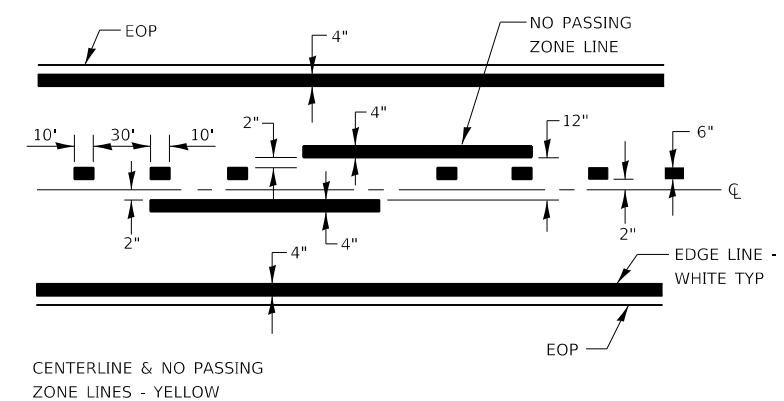
**TEMPORARY INFORMATION SIGNING**

**NOTES:**

1. USE 6" D BLACK LETTERING ON FLOURESENT ORANGE BACKGROUND.
2. ERECT SIGNS AT LOCATIONS IN ADVANCE OF THE "ROAD CONSTRUCTION AHEAD" SIGNS AS DIRECTED BY THE ENGINEER.
3. ERECT SIGN ① WITH INSTALLED PANEL ② A MINIMUM OF ONE WEEK PRIOR TO THE START OF THE LANE CLOSURE.
4. REMOVE PANEL ② ON THAT DATE.
5. SEE SPECIAL PROVISION "TEMPORARY INFORMATION SIGNING" FOR ADDITIONAL INFORMATION.
6. WILL BE PAID FOR PER SQ FT AS "TEMPORARY INFORMATION SIGNING". EACH SIGN = 21 SQ FT AND THE DATE PANEL ② WILL NOT BE MEASURED SEPARATELY FOR PAYMENT.



**SECTION A-A**  
**RURAL MAILBOX TURNOUT DETAILS**



**PAVEMENT MARKING**

MODEL: MODEL\MAR15  
FILE: Mar15 - 300 - work\side\bu02ymiskim\070368\0368L30-ph-cover.dgn

USER NAME = budzynskim	DESIGNED -	REVISED -
PLOT SCALE = 100,0000' / in.	DRAWN -	REVISED -
PLOT DATE = 1/29/2021	CHECKED -	REVISED -
	DATE -	REVISED -

**STATE OF ILLINOIS**  
**DEPARTMENT OF TRANSPORTATION**

SCALE:		SHEET OF SHEETS		STA. TO STA.	

F.A.P. RTE.	SECTION	COUNTY	TOTAL SHEETS	SHEET NO.
332	(5, K) SFY, Y	*	8	8
CONTRACT NO. 66L30				
ILLINOIS FED. AID PROJECT				

\*KANKAKEE & BROOKINGS