

STATE OF ILLINOIS
DEPARTMENT OF TRANSPORTATION

F.A.P. RTE.	SECTION	COUNTY	TOTAL SHEETS	SHEET NO.
573	(116R-2BR-1)BRR	DEKALB	19	1
		ILLINOIS	CONTRACT NO. 66L54	

INDEX OF SHEETS

- 1. COVER SHEET
- 2. GENERAL NOTES
- 3 - 5. SUMMARY OF QUANTITIES
- 6. TYPICAL SECTIONS
- 7. SHOULDER RECONSTRUCTION DETAILS
- 8 10. TRAFFIC CONTROL AND PROTECTION, STANDARD 701321 STAGING DETAILS
- 11 - 17. STRUCTURE REPAIR PLANS FOR STRUCTURE NO. 019-0036
- 18. TEMPORARY INFORMATION SIGNING
- 19. MISCELLANEOUS DETAILS

STANDARDS

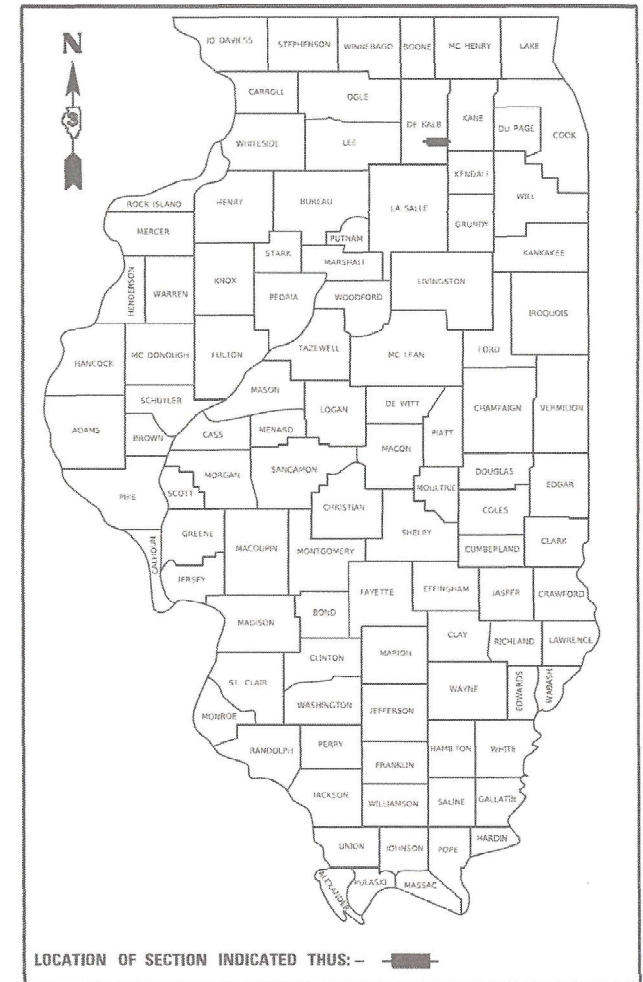
- 000001-08 STANDARD SYMBOLS, ABBREVIATIONS AND PATTERNS
- 001001-02 AREAS OF REINFORCEMENT BARS
- 001006 DECIMAL OF AN INCH AND OF A FOOT
- 482006-03 HMA SHOULDER ADJACENT TO FLEXIBLE PAVEMENT
- 701001-02 OFF-ROAD OPERATIONS 2L, 2W, MORE THAN 15' (4.5 m) AWAY
- 701006-05 OFF-ROAD OPERATIONS 2L, 2W, 15' (4.5 m) TO 24" (600 mm) FROM PAVEMENT EDGE
- 701201-05 LANE CLOSURE, 2L, 2W, DAY ONLY, FOR SPEEDS \geq 45 MPH
- 701206-05 LANE CLOSURE, 2L, 2W, NIGHT ONLY, FOR SPEEDS \geq 45 MPH
- 701301-04 LANE CLOSURE, 2L, 2W, SHORT TIME OPERATIONS
- 701311-03 LANE CLOSURE, 2L, 2W, MOVING OPERATIONS - DAY ONLY
- 701316-13 LANE CLOSURE, 2L, 2W, BRIDGE REPAIR, FOR SPEEDS \geq 45 MPH
- 701326-04 LANE CLOSURE, 2L, 2W, PAVEMENT WIDENING, FOR SPEEDS \geq 45 MPH
- 701901-08 TRAFFIC CONTROL DEVICES
- 782006-01 GUARDRAIL AND BARRIER WALL REFLECTOR MOUNTING DETAILS

**PROPOSED
HIGHWAY PLANS**

**F.A.P. ROUTE 573 (US 30)
SECTION (116R-2BR-1)BRR
BRIDGE REPAIRS
DEKALB COUNTY**

C-93-043-21

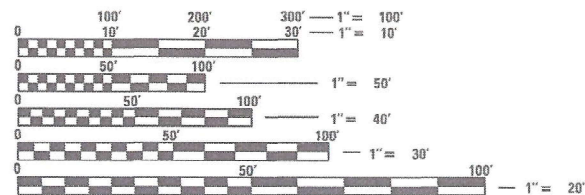
D-93-012-21



FUNCTIONAL CLASSIFICATION
RURAL
MINOR ARTERIAL
F.A.P. ROUTE 573 (US 30)
2019 ADT = 3850
P.V. 87.4% S.U. 2.9% M.U. 9.7%

PROJECT LOCATION

STRUCTURE NO. 019-0036
AT STA. 904+06.50
CARRYING FAP ROUTE 573 (US 30)
OVER LITTLE ROCK CREEK
0.5 MILES WEST OF HINCKLEY



FULL SIZE PLANS HAVE BEEN PREPARED USING STANDARD ENGINEERING SCALES. REDUCED SIZED PLANS WILL NOT CONFORM TO STANDARD SCALES. IN MAKING MEASUREMENTS ON REDUCED PLANS, THE ABOVE SCALES MAY BE USED.

J.U.L.I.E.
JOINT UTILITY LOCATION INFORMATION FOR EXCAVATORS
1-800-892-0123
OR 811

PROJECT ENGINEER JOE KANNEL PE
UNIT CHIEF RON WOODSHANK
DISTRICT 3 PHONE (815) 434-6131
CONTRACT NO. 66L54



PPOINT LOCATION

STATE OF ILLINOIS
DEPARTMENT OF TRANSPORTATION

SUBMITTED February 02, 20 21
James Almond
REGIONAL ENGINEER

March 19, 2021
Joe A. Elk
ENGINEER OF DESIGN AND ENVIRONMENT

March 19, 2021
James J. ...
DIRECTOR OF HIGHWAYS PROJECT IMPLEMENTATION

PRINTED BY THE AUTHORITY
OF THE STATE OF ILLINOIS

GENERAL NOTES

THE ENGINEER WILL BE THE SOLE JUDGE CONCERNING CURING TIME FOR THE VARIOUS HMA LIFTS.

ALL EXCAVATED MATERIAL, WHICH INCLUDES DIGGING OR GRADING OF ANY SOIL OR FILL MATERIAL, WITH THE EXCEPTION OF AGGREGATE FILLS, MUST BE INCORPORATED WITHIN THE IDOT RIGHT OF WAY.

EXCAVATED "EARTHEN OR FILL MATERIALS" SHALL BE REMOVED, RELOCATED AND PLACED AS DIRECTED BY THE ENGINEER.

THE FOLLOWING RATES OF APPLICATION HAVE BEEN USED IN CALCULATING PLAN QUANTITIES:

GRANULAR MATERIALS	2.05	TONS / CU YD
HMA RESURFACING	112	LBS / SQ YD / IN
SHORT TERM PAVEMENT MARKING	10	FT /100 FT OF APPLICATION

COMMITMENTS

THE ENGINEER SHALL RECORD THE DECK SLAB REPAIR LOCATIONS AND QUANTITIES ON THE "DECK SLAB REPAIR "AS-BUILT" PLAN DETAILS. WHEN RECORDED, THE ENGINEER SHALL FORWARD THE DECK SLAB REPAIR "AS-BUILT" PLAN DETAILS TO THE BRIDGE OFFICE IN A TIMELY MANNER. BRIDGE OFFICE CONTACT PERSON IS "VICTOR VELIZ" (PHONE (217) 782-2708 EMAIL Victor.Veliz@illinois.gov

HMA MIXTURE REQUIREMENT TABLE

LOCATION(S) :	HOT-MIX ASPHALT SHOULDERS	
	HMA BINDER	HMA SURFACE
MIXTURE USE(S) :	BOTTOM LIFTS	TOP LIFT
BINDER GRADE (PG) :	PG 64-22	PG 64-22
DESIGN AIR VOIDS :	4% @ N50	4% @ N50
MIXTURE COMPOSITION: (MIXTURE GRADATION)	IL 19.0	IL 9.5
FRICTION AGGREGATE :		MIXTURE C
MIXTURE WEIGHT :	112.0 LB/SY/IN	112.0 LB/SY/IN
QUALITY MANAGEMENT PROGRAM :	QC/QA	QC/QA
SUBLOT SIZE :	N/A	N/A
DENSITY TEST METHOD :	CORES	CORES

STATE OF ILLINOIS
DEPARTMENT OF TRANSPORTATION
DISTRICT THREE
AS BUILT INFORMATION

SUPERVISING CONSTRUCTION FIELD ENGINEER

RESIDENT ENGINEER / TECHNICIAN

START & END DATES
OF CONSTRUCTION:

INSPECTORS:

DATE: _____

PREPARED BY: _____
DISTRICT STUDIES & PLANS ENGINEER

EXAMINED BY: _____
DISTRICT CONSTRUCTION ENGINEER

DISTRICT MATERIALS ENGINEER

DISTRICT OPERATIONS ENGINEER

MODEL: Default
FILE NAME: p:\pub\harronm.dwt\illinois.gov\PIWDOT\Documents\IDOT_Offices\District 3\Projects\ID366L5A\CADD\DATA\ID366L5A-cover.dgn

USER NAME = woodshank1	DESIGNED -	REVISED -
	DRAWN -	REVISED -
PLOT SCALE = 40,0000 */ in.	CHECKED -	REVISED -
PLOT DATE = 2/1/2021	DATE -	REVISED -

**STATE OF ILLINOIS
DEPARTMENT OF TRANSPORTATION**

GENERAL NOTES

SCALE: SHEET 1 OF 1 SHEETS STA. TO STA.

F.A.P. RTE.	SECTION	COUNTY	TOTAL SHEETS	SHEET NO.
573	(116R-2BR-1)BRR	DEKALB	19	2
				CONTRACT NO. 66L54
		ILLINOIS	FED. AID PROJECT	

CODE NO.	ITEM	UNIT	TOTAL QUANTITY	CONSTRUCTION CODE
				CONTRACT MAINTENANCE
				100% STATE
				BRIDGE
				0047
				S.N. 019-0036
20200500	EARTH EXCAVATION (WIDENING)	CU YD	22	22
48203029	HOT-MIX ASPHALT SHOULDERS, 8"	SQ YD	100	100
50102400	CONCRETE REMOVAL	CU YD	14.6	14.6
50300255	CONCRETE SUPERSTRUCTURE	CU YD	14.7	14.7
50300300	PROTECTIVE COAT	SQ YD	45	45
50800205	REINFORCEMENT BARS, EPOXY COATED	POUND	2260	2260
50800515	BAR SPLICERS	EACH	26	26
52000110	PREFORMED JOINT STRIP SEAL	FOOT	120	120
63300575	REMOVE AND REERECT RAIL ELEMENT OF EXISTING GUARDRAIL	FOOT	25	25
67000400	ENGINEER'S FIELD OFFICE, TYPE A	CAL MO	4	4
67100100	MOBILIZATION	L SUM	1	1
70100405	TRAFFIC CONTROL AND PROTECTION, STANDARD 701321	EACH	1	1
70100450	TRAFFIC CONTROL AND PROTECTION, STANDARD 701201	L SUM	1	1
70100455	TRAFFIC CONTROL AND PROTECTION, STANDARD 701206	L SUM	1	1

MODEL: Default
 FILE NAME: P:\p12100000\dot\illinois.gov-PWD\DOT\Documents\DOT - Offices\District 3\project\033661-5\C1000001\03661-51-cover.dgn

USER NAME = woodshankri	DESIGNED -	REVISED -
PLOT SCALE = 40.0000' / in.	DRAWN -	REVISED -
PLOT DATE = 2/1/2021	CHECKED -	REVISED +
	DATE -	REVISED +

**STATE OF ILLINOIS
DEPARTMENT OF TRANSPORTATION**

SUMMARY OF QUANTITIES

SCALE: SHEET 1 OF 3 SHEETS STA. TO STA.

F.A.P. RTE.	SECTION	COUNTY	TOTAL SHEETS	SHEET NO.
573	(116R-2BR-1)BRR	DEKALB	19	3
			CONTRACT NO. 66L54	
ILLINOIS FED. AID PROJECT				

CONSTRUCTION CODE

CONTRACT MAINTENANCE

100% STATE

BRIDGE

0047

S.N. 019-0036

CODE NO.	ITEM	UNIT	TOTAL QUANTITY	
70106500	TEMPORARY BRIDGE TRAFFIC SIGNALS	EACH	1	1
70300100	SHORT TERM PAVEMENT MARKING	FOOT	63	63
70300150	SHORT TERM PAVEMENT MARKING REMOVAL	SQ FT	21	21
70400100	TEMPORARY CONCRETE BARRIER	FOOT	387.5	387.5
70400200	RELOCATE TEMPORARY CONCRETE BARRIER	FOOT	387.5	387.5
70600280	IMPACT ATTENUATORS, TEMPORARY (SEVERE USE,NARROW), TEST LEVEL 3	EACH	2	2
70600370	IMPACT ATTENUATORS, RELOCATE (SEVERE USE, NARROW), TEST LEVEL 3	EACH	2	2
* 78008210	POLYUREA PAVEMENT MARKING TYPE I - LINE 4"	FOOT	768	768
* 78008230	POLYUREA PAVEMENT MARKING TYPE I - LINE 6"	FOOT	172	172
78300202	PAVEMENT MARKING REMOVAL - WATER BLASTING	SQ FT	340	340
X0326649	LINEAR DELINEATOR PANELS, 6 INCH	EACH	4	4
X0327809	LINEAR DELINEATOR PANELS, 4 INCH	EACH	8	8
X2700001	TEMPORARY RUMBLE STRIPS (SPECIAL)	EACH	6	6
Z0016200	DECK SLAB REPAIR (PARTIAL)	SQ YD	70	70

*= SPECIALTY ITEM

MODEL: Default
FILE NAME: p:\pub\mroom.dwg
PROJECT: 0366LSA\CADD\DATA\0366LSA-cover.dgn

USER NAME = woodshank1	DESIGNED -	REVISED -
	DRAWN -	REVISED -
PLOT SCALE = 40,0000 * / in.	CHECKED -	REVISED -
PLOT DATE = 2/1/2021	DATE -	REVISED -

**STATE OF ILLINOIS
DEPARTMENT OF TRANSPORTATION**

SUMMARY OF QUANTITIES

SCALE: SHEET 2 OF 3 SHEETS STA. TO STA.

F.A.P. RTE.	SECTION	COUNTY	TOTAL SHEETS	SHEET NO.
573	(116R-2BR-1)BRR	DEKALB	19	4
CONTRACT NO. 66L54			ILLINOIS FED. AID PROJECT	

CODE NO.	ITEM	UNIT	TOTAL QUANTITY	CONSTRUCTION CODE
				CONTRACT MAINTENANCE 100% STATE BRIDGE 0047 S.N. 019-0036
Z0030850	TEMPORARY INFORMATION SIGNING	SQ FT	42	42

MODEL: Default
 FILE NAME: \\paulhammon.dot.ilinois.gov\PWDOT\Documents\DOT_Offices\District 3\Projects\0366LSA\CADD\0366LSA-cover.dgn

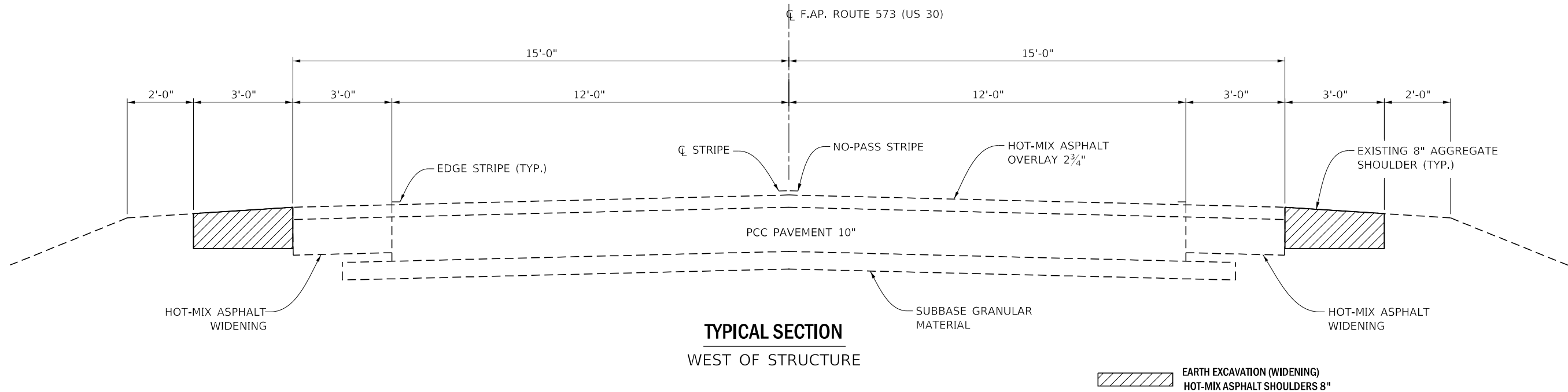
USER NAME = woodshank1	DESIGNED -	REVISED -
	DRAWN -	REVISED -
PLOT SCALE = 40,0000 * / in.	CHECKED -	REVISED -
PLOT DATE = 2/3/2021	DATE -	REVISED -

**STATE OF ILLINOIS
DEPARTMENT OF TRANSPORTATION**

SUMMARY OF QUANTITIES

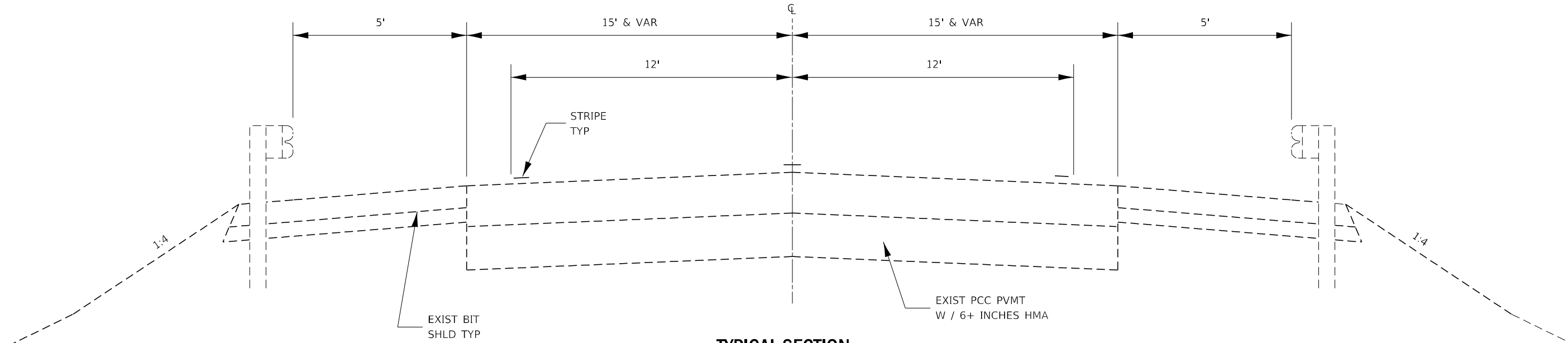
SCALE: SHEET 3 OF 3 SHEETS STA. TO STA.

F.A.P. RTE.	SECTION	COUNTY	TOTAL SHEETS	SHEET NO.
573	(116R-2BR-1)BRR	DEKALB	19	5
				CONTRACT NO. 66L54
		ILLINOIS	FED. AID PROJECT	



TYPICAL SECTION
WEST OF STRUCTURE

EARTH EXCAVATION (WIDENING)
 HOT-MIX ASPHALT SHOULDERS 8"



TYPICAL SECTION
EAST OF STRUCTURE

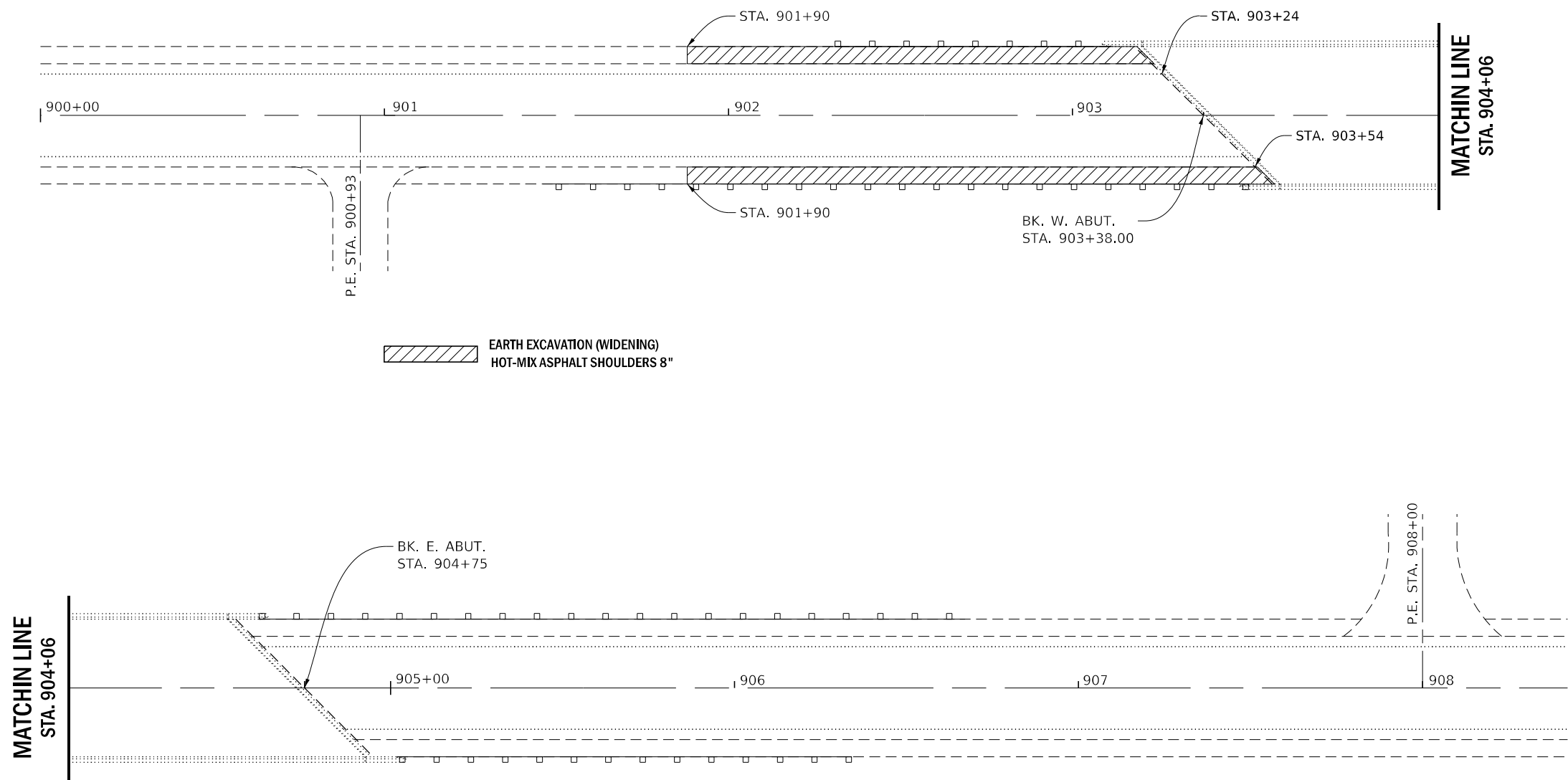
MODEL: Default
 FILE NAME: \\pwwdot\documents\dot\office\dist\ref\3\projects\10366154\10366154-cover.dgn

USER NAME = woodshank1	DESIGNED -	REVISED -
	DRAWN -	REVISED -
PLOT SCALE = 40,0000 * / in.	CHECKED -	REVISED -
PLOT DATE = 2/1/2021	DATE -	REVISED -

STATE OF ILLINOIS
DEPARTMENT OF TRANSPORTATION

TYPICAL SECTION	
SCALE:	SHEET 1 OF 1 SHEETS STA. TO STA.

F.A.P. RTE.	SECTION	COUNTY	TOTAL SHEETS	SHEET NO.
573	(116R-2BR-1)BRR	DEKALB	19	6
CONTRACT NO. 66L54			ILLINOIS FED. AID PROJECT	



MODEL: Default
 FILE NAME: p:\pub\harronm.dwg
 PROJECT: P:\DOT\Documents\DOT - Office\District 3\Projects\1036615\1036615-1-cover.dgn

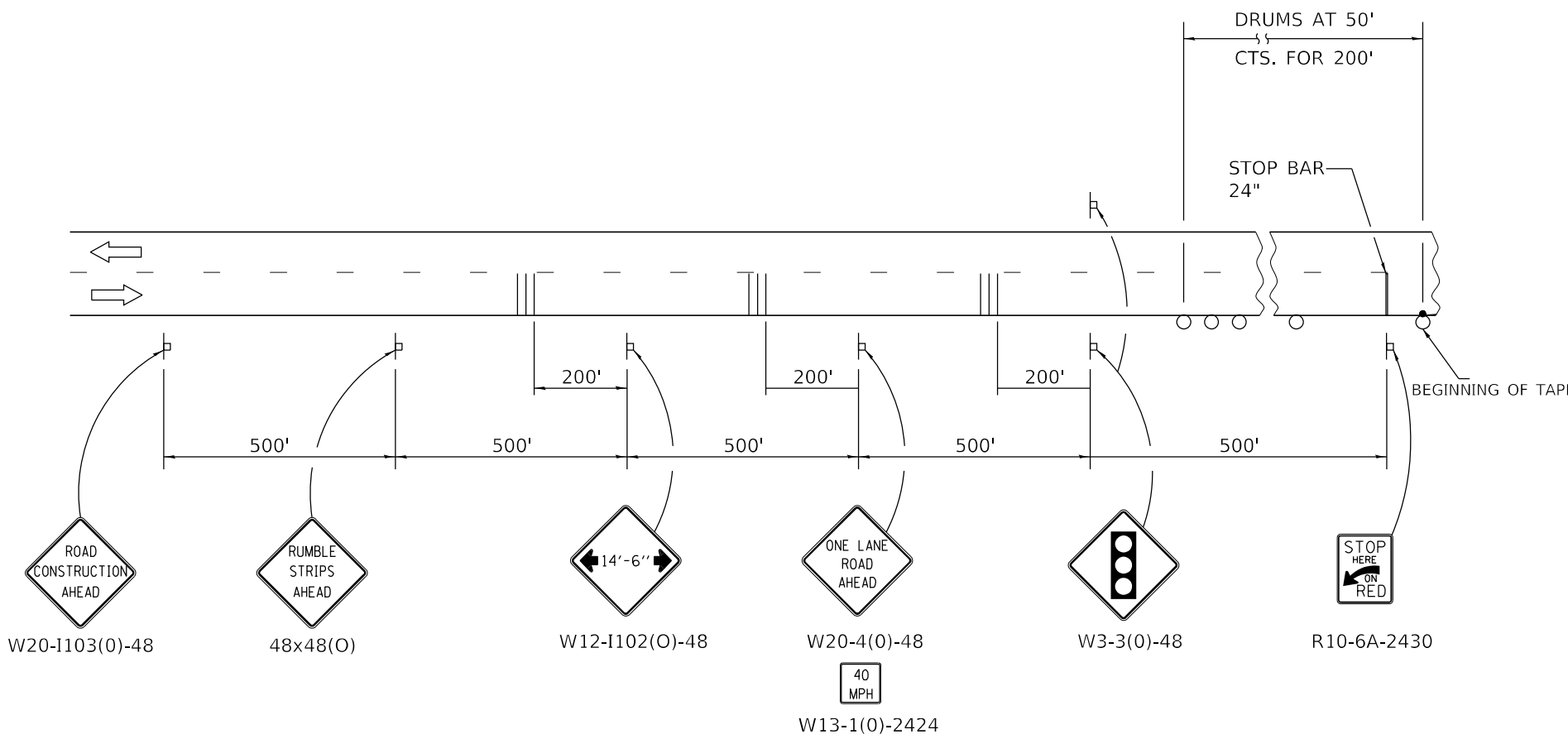
USER NAME = woodshank1	DESIGNED -	REVISED -
	DRAWN -	REVISED -
PLOT SCALE = 40,0000 * / in.	CHECKED -	REVISED -
PLOT DATE = 2/1/2021	DATE -	REVISED -

**STATE OF ILLINOIS
DEPARTMENT OF TRANSPORTATION**

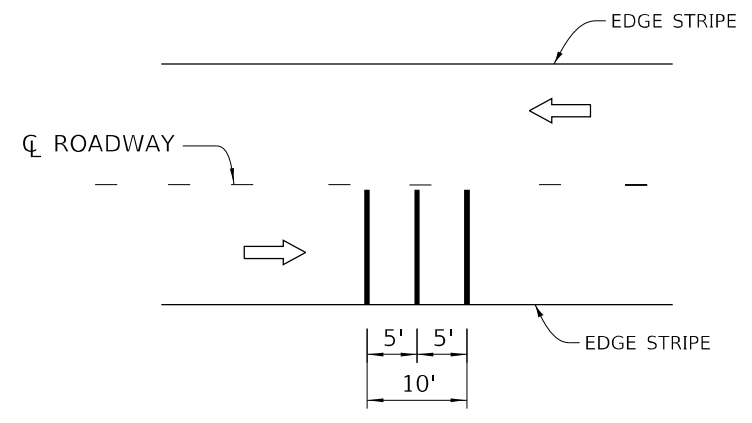
SHOULDER RECONSTRUCTION DETAILS

SCALE: SHEET 1 OF 1 SHEETS STA. TO STA.

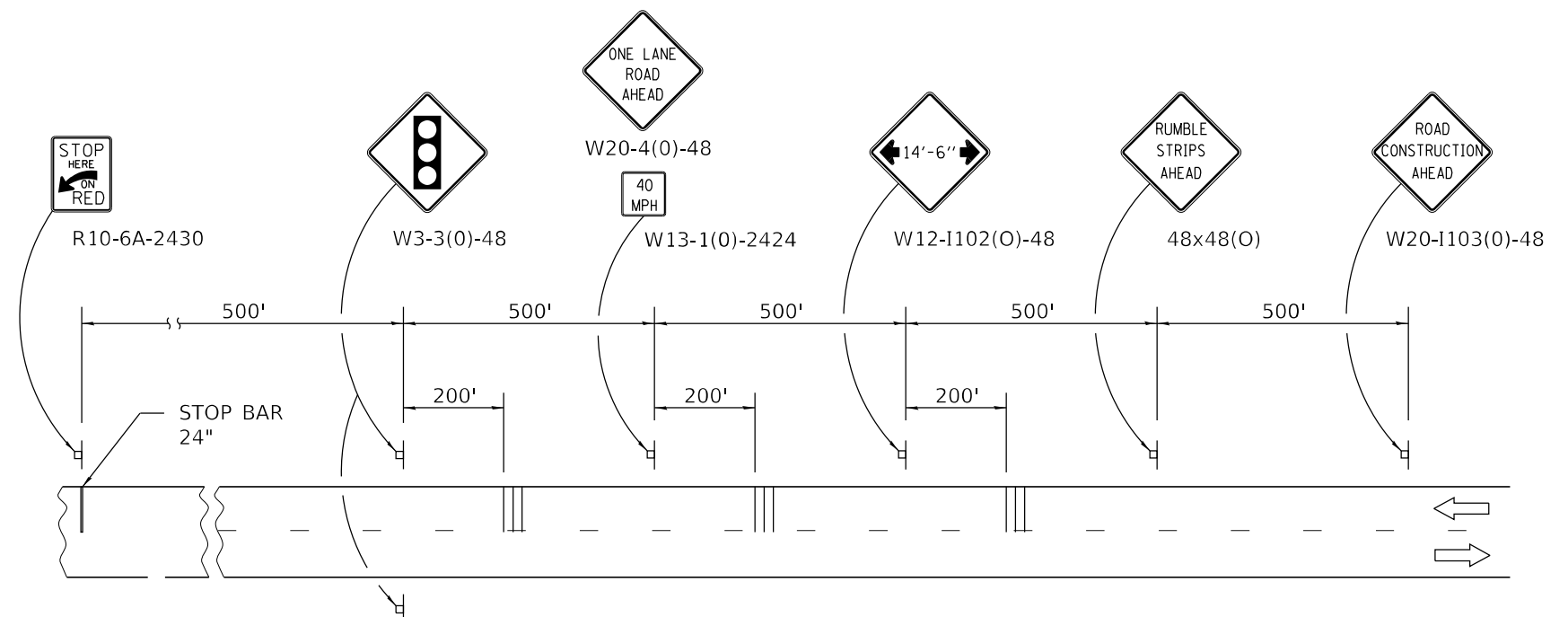
F.A.P. RTE.	SECTION	COUNTY	TOTAL SHEETS	SHEET NO.
573	(116R-2BR-1)BRR	DEKALB	19	7
CONTRACT NO. 66L54				
ILLINOIS FED. AID PROJECT				



- SYMBOLS**
- ⊥ SIGN
 - ▮ TEMPORARY RUMBLE STRIP
 - DRUM
 - DRUM WITH STEADY BURNING BI-DIRECTIONAL LIGHT



TEMPORARY RUMBLE STRIP (SPECIAL)



MODEL: Default
 FILE NAME: \\paulhammond.dad.state.il.us\proj\DOT\Documents\DOT_Office\Projects\11666\11666.dwg
 PROJECT: 11666-2BR-1BRR

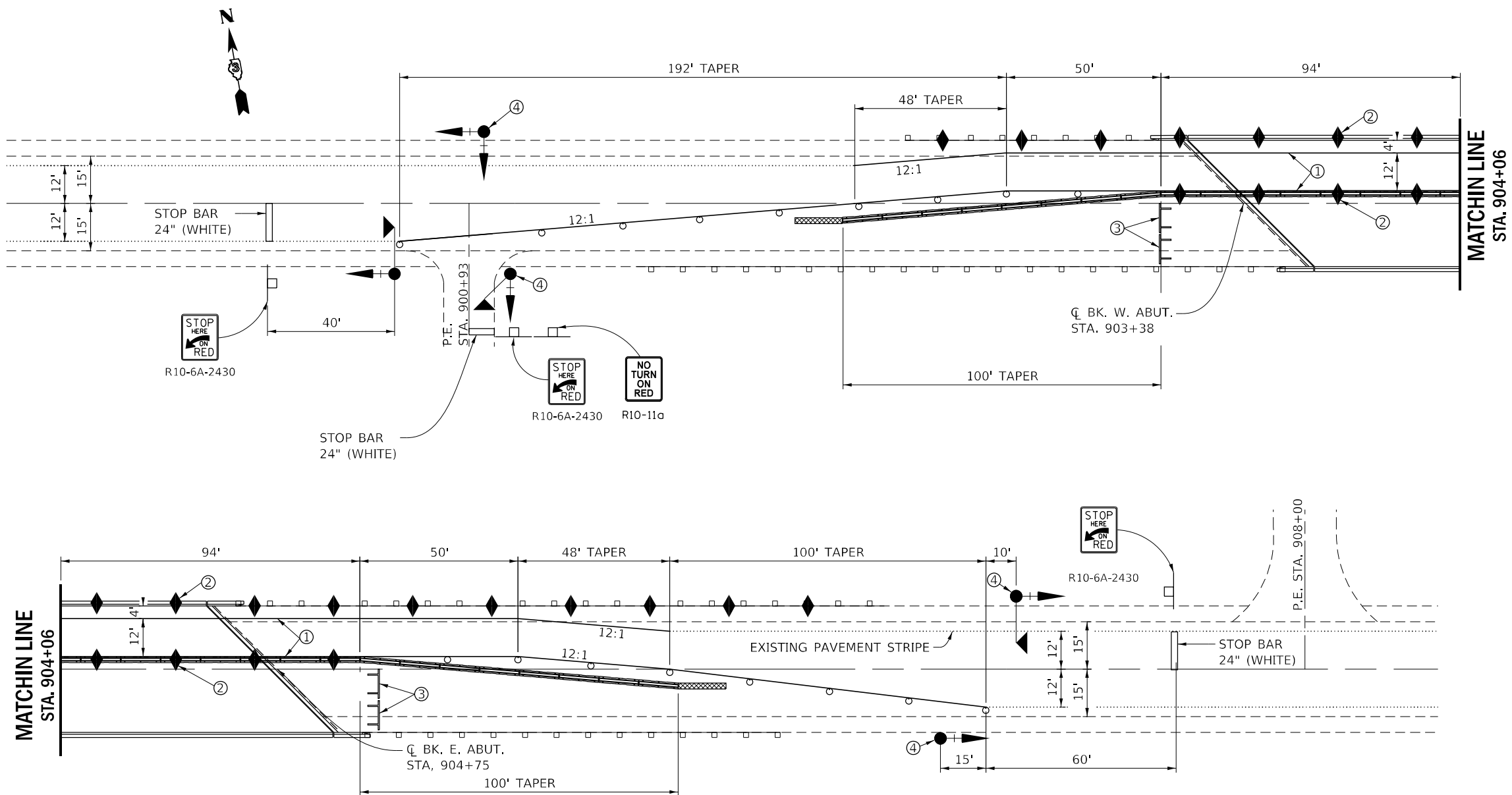
USER NAME = woodshank1	DESIGNED -	REVISED -
	DRAWN -	REVISED -
PLOT SCALE = 40,0000 */ in.	CHECKED -	REVISED -
PLOT DATE = 2/1/2021	DATE -	REVISED -

**STATE OF ILLINOIS
DEPARTMENT OF TRANSPORTATION**

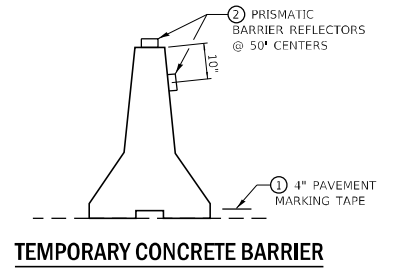
**TRAFFIC CONTROL AND PROTECTION, STANDARD 701321
ADVANCED SIGNING**

F.A.P. RTE.	SECTION	COUNTY	TOTAL SHEETS	SHEET NO.
573	(116R-2BR-1)BRR	DEKALB	19	8
CONTRACT NO. 66L54				
ILLINOIS FED. AID PROJECT				

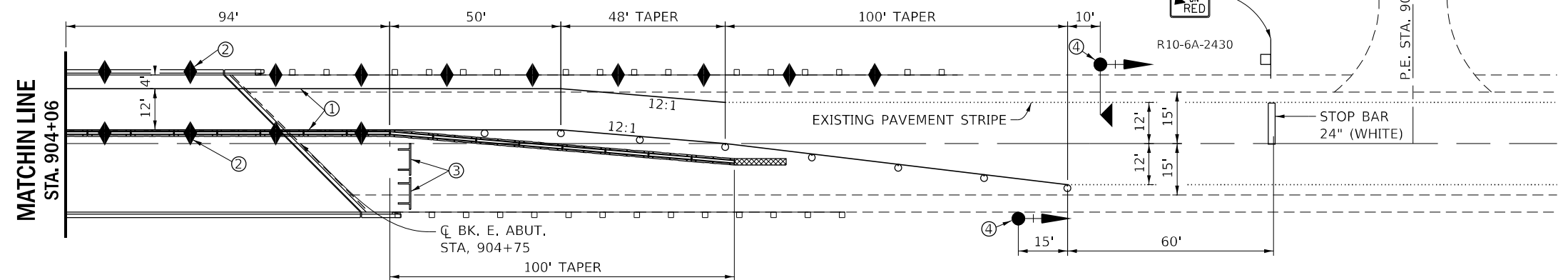
SCALE: SHEET 1 OF 3 SHEETS STA. TO STA.



- ① TEMPORARY PAVEMENT MARKING OR EXISTING PAVEMENT SHALL BE ON BOTH SIDES OF THE OPEN LANE.
- ② GURARDRAIL/BARRIER WALL REFLECTORS AT 25' CTS. SEE STANDARDS 704001 & 782006.
- ③ TYPE III BARRICADES SHALL BE PLACED WHEN NO WORK IS BEING PERFORMED.
- ④ THE EDGE OF THE POST MOUNED SIGNAL HEAD SHALL BE BETWEEN 24" AND 6' OF THE EDGE OF PAVEMENT.

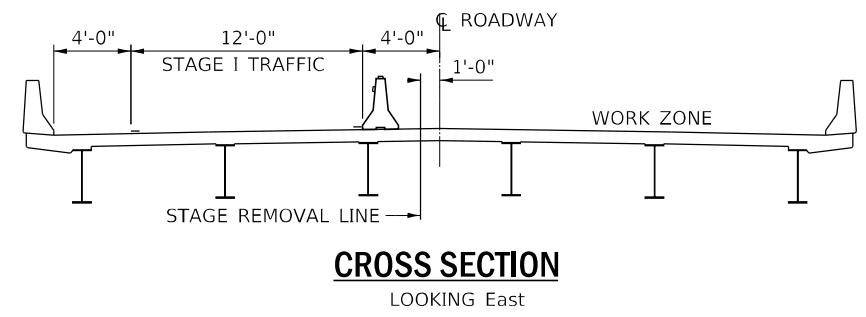


TEMPORARY CONCRETE BARRIER



LEGEND

- WORK AREA
- SIGN
- TYPE III BARRICADE
- TRAFFIC SIGNAL W/BACKPLATE
- TRAFFIC SIGNAL W/ BACKPLATE & MICROWAVE DETECTOR
- DRUMS @ 25' CTS. (TANGENT)
- DRUM WITH STEADY BURNING BI-DIRECTIONAL LIGHT @ 25' CTS. (TAPERS)
- TEMPORARY CONCRETE BARRIER
- CRYSTAL, BI-DIRECTIONAL BARRIER WALL/GUARDRAIL MARKER @ 25' CTS.
- IMPACT ATTENUATOR



CROSS SECTION
LOOKING East

GENERAL NOTES

THIS STANDARD IS USED WHERE, AT ANY TIME, ANY VEHICLE, EQUIPMENT, WORKERS, OR THEIR ACTIVITIES WILL ENCRACH ON ONE LANE OF A BRIDGE. TRAFFIC SIGNALS AND A POSITIVE BARRIER ARE REQUIRED.

TRAFFIC SIGNALS SHALL BE OPERATIONAL ONLY WHEN ALL TRAFFIC CONTROLS ARE IN PLACE. WHEN TRAFFIC SIGNALS ARE NOT IN OPERATION, FLAGGERS SHALL BE USED AND TRAFFIC CONTROL SHALL CONFORM TO STANDARD 701201 OR 701206.

TEMPORARY CONCRETE BARRIER SHALL BE ACCORDING TO STANDARD 704001.

EXISTING OR TEMPORARY PAVEMENT MARKINGS SHALL BE ON BOTH SIDES OF OPEN LANE FROM STOP BAR TO STOP BAR.

ALL DIMENSIONS ARE IN INCHES (MILLIMETERS) UNLESS OTHERWISE SHOWN.

TEMPORARY PAVEMENT MARKING AS SHOWN ON THIS DETAIL, SHALL NOT BE PAID FOR SEPARATELY BUT SHALL BE INCLUDED IN THE COST OF THE STANDARD.

MODEL: Default
 FILE NAME: p:\pub\mcomon.dwt\illinc\gov\PIW\DOT\Documents\IBDT_Offices\Distctc_3\Projects\038665\ACADD\DATA\038665_L4-cover.dgn

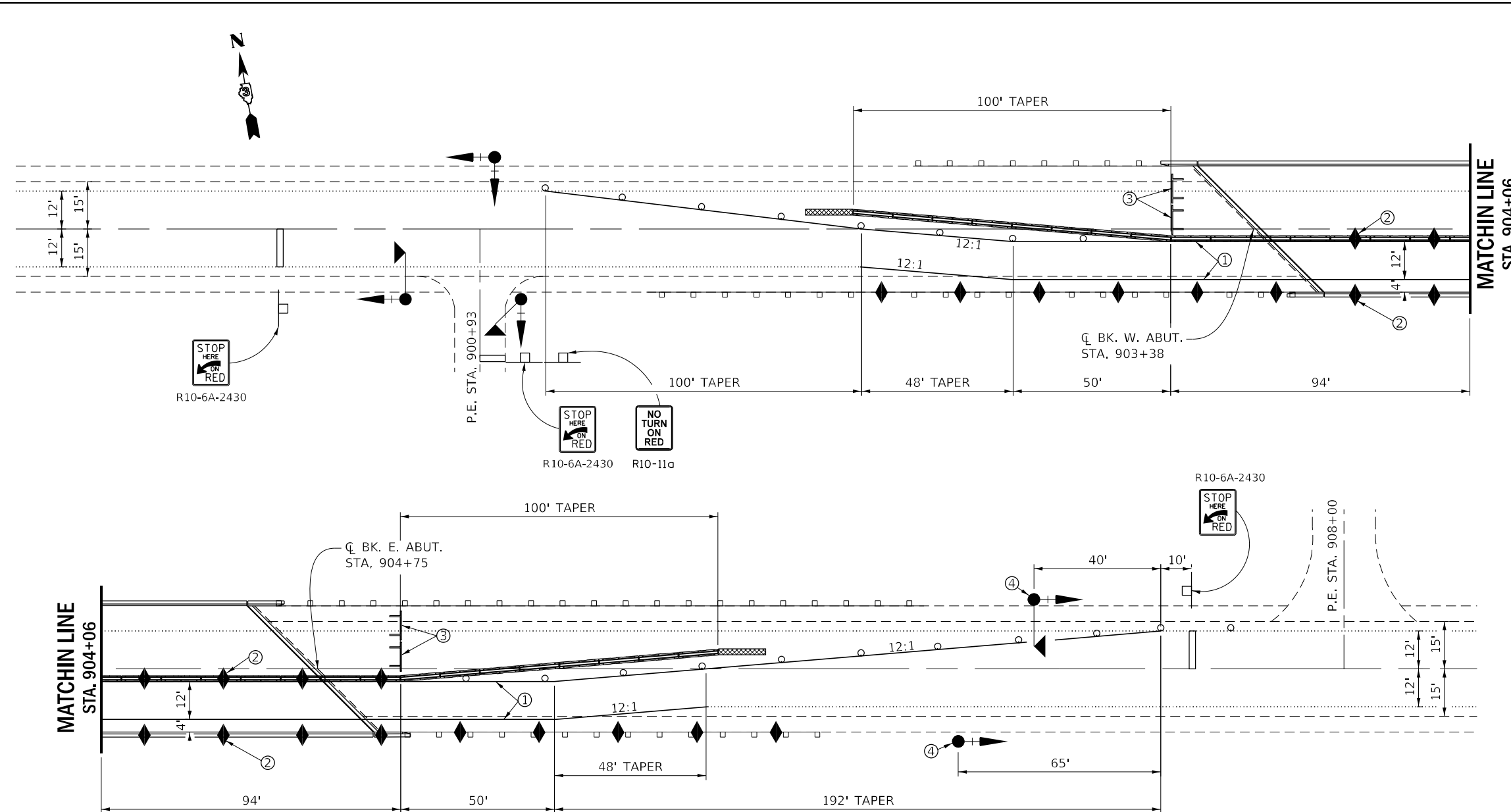
USER NAME = woodshank1	DESIGNED -	REVISED -
	DRAWN -	REVISED -
PLOT SCALE = 40,0000 * / in.	CHECKED -	REVISED -
PLOT DATE = 2/1/2021	DATE -	REVISED -

**STATE OF ILLINOIS
DEPARTMENT OF TRANSPORTATION**

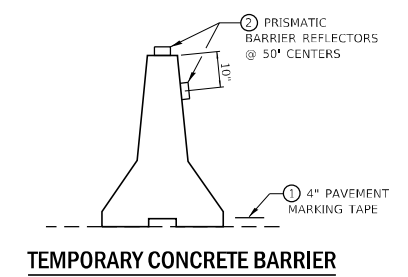
**TRAFFIC CONTROL AND PROTECTION,
STANDARD 701321 - STAGE I**

SCALE: SHEET 2 OF 3 SHEETS STA. TO STA.

F.A.P. RTE.	SECTION	COUNTY	TOTAL SHEETS	SHEET NO.
573	(116R-2BR-1)BRR	DEKALB	19	9
		CONTRACT NO. 66L54		
		ILLINOIS FED. AID PROJECT		



- ① TEMPORARY PAVEMENT MARKING OR EXISTING PAVEMENT SHALL BE ON BOTH SIDES OF THE OPEN LANE.
- ② GUARDRAIL/BARRIER WALL REFLECTORS AT 25' CTS. SEE STANDARDS 704001 & 782006.
- ③ TYPE III BARRICADES SHALL BE PLACED WHEN NO WORK IS BEING PERFORMED.
- ④ THE EDGE OF THE POST MOUNDED SIGNAL HEAD SHALL BE BETWEEN 24" AND 6' OF THE EDGE OF PAVEMENT.



TEMPORARY CONCRETE BARRIER

GENERAL NOTES

THIS STANDARD IS USED WHERE, AT ANY TIME, ANY VEHICLE, EQUIPMENT, WORKERS, OR THEIR ACTIVITIES WILL ENCR OACH ON ONE LANE OF A BRIDGE. TRAFFIC SIGNALS AND A POSITIVE BARRIER ARE REQUIRED.

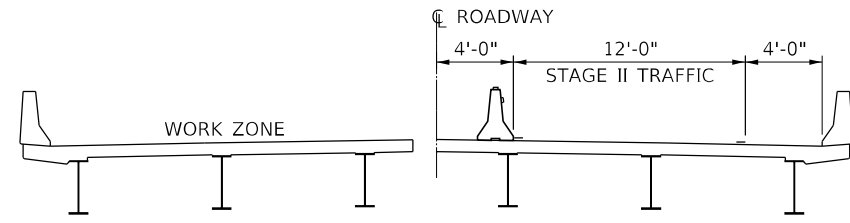
TRAFFIC SIGNALS SHALL BE OPERATIONAL ONLY WHEN ALL TRAFFIC CONTROLS ARE IN PLACE. WHEN TRAFFIC SIGNALS ARE NOT IN OPERATION, FLAGGERS SHALL BE USED AND TRAFFIC CONTROL SHALL CONFORM TO STANDARD 701201 OR 701206.

TEMPORARY CONCRETE BARRIER SHALL BE ACCORDING TO STANDARD 704001.

EXISTING OR TEMPORARY PAVEMENT MARKINGS SHALL BE ON BOTH SIDES OF OPEN LANE FROM STOP BAR TO STOP BAR.

ALL DIMENSIONS ARE IN INCHES (MILLIMETERS) UNLESS OTHERWISE SHOWN.

TEMPORARY PAVEMENT MARKING AS SHOWN ON THIS DETAIL, SHALL NOT BE PAID FOR SEPARATELY BUT SHALL BE INCLUDED IN THE COST OF THE STANDARD.



CROSS SECTION
LOOKING East

LEGEND

- | | | | |
|--|--------------------|--|---|
| | WORK AREA | | DRUM WITH STEADY BURNING BI-DIRECTIONAL LIGHT |
| | SIGN | | DRUM |
| | TYPE III BARRICADE | | TEMPORARY CONCRETE BARRIER |
| | TRAFFIC SIGNAL | | CRYSTAL, BI-DIRECTIONAL BARRIER WALL/GUARDRAIL MARKER |
| | IMPACT ATTENUATOR | | |

MODEL: Default
 FILE NAME: p:\pub\baronm.dwg
 PROJECT: 1166R-2BR-1BRR
 OFFICE: DISTRICT 3
 PROJECT: 1166R-2BR-1BRR
 DATE: 2/1/2021

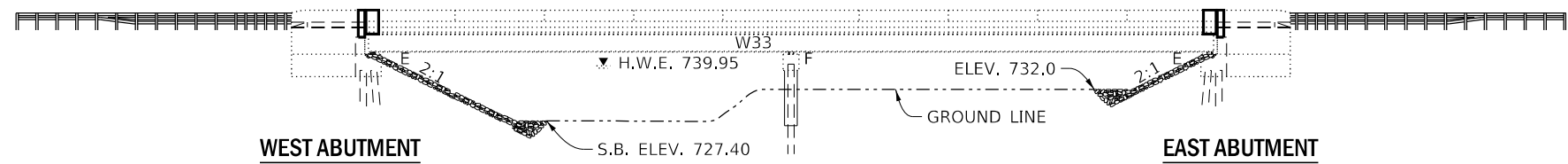
USER NAME = woodshank1	DESIGNED -	REVISED -
PLOT SCALE = 40,0000 * / in.	DRAWN -	REVISED -
PLOT DATE = 2/1/2021	CHECKED -	REVISED -
	DATE -	REVISED -

**STATE OF ILLINOIS
DEPARTMENT OF TRANSPORTATION**

**TRAFFIC CONTROL AND PROTECTION,
STANDARD 701321 - STAGE II**

SCALE: SHEET 3 OF 3 SHEETS STA. TO STA.

F.A.P. RTE.	SECTION	COUNTY	TOTAL SHEETS	SHEET NO.
573	(116R-2BR-1)BRR	DEKALB	19	10
CONTRACT NO. 66L54			ILLINOIS FED. AID PROJECT	



ELEVATION

GENERAL NOTES

PLAN DIMENSIONS AND DETAILS RELATIVE TO EXISTING PLANS ARE SUBJECT TO NOMINAL CONSTRUCTION VARIATIONS. THE CONTRACTOR SHALL FIELD VERIFY EXISTING DIMENSIONS AND DETAILS AFFECTING NEW CONSTRUCTION AND MAKE NECESSARY APPROVED ADJUSTMENTS PRIOR TO CONSTRUCTION OR ORDERING OF MATERIALS. SUCH VARIATIONS SHALL NOT BE CAUSE FOR ADDITIONAL COMPENSATION FOR A CHANGE IN SCOPE OF WORK; HOWEVER, THE CONTRACTOR WILL BE PAID FOR THE QUANTITY ACTUALLY FURNISHED AT THE UNIT PRICE BID FOR THE WORK.

EXPANSION JOINTS SHALL BE AASHTO M 270 GRADE 36.

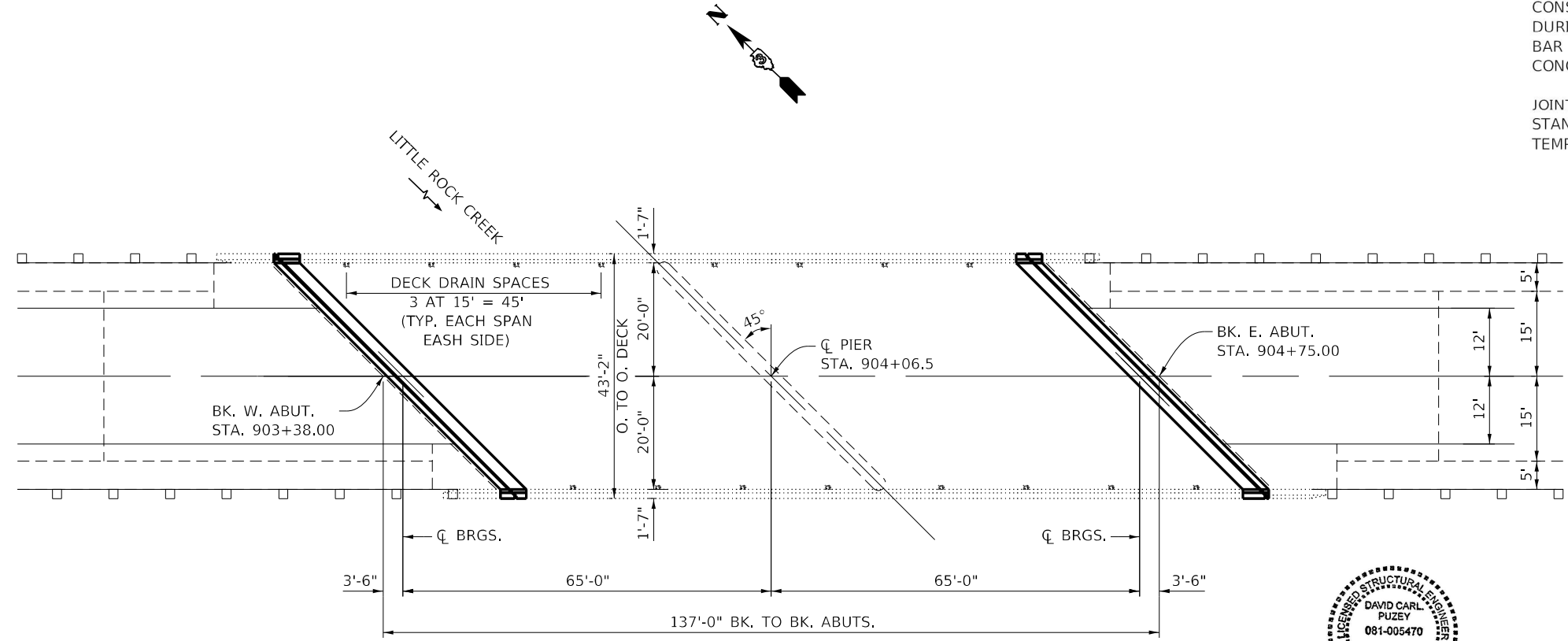
REINFORCEMENT BARS DESIGNATED (E) SHALL BE EPOXY COATED.

PRIOR TO POURING THE NEW CONCRETE DECK, ALL HEAVY OR LOOSE RUST, LOOSE MILL SCALE, AND OTHER LOOSE OR POTENTIALLY DETRIMENTAL FOREIGN MATERIAL SHALL BE REMOVED FROM THE SURFACES IN CONTACT WITH CONCRETE. TIGHTLY ADHERED PAINT MAY REMAIN UNLESS OTHERWISE NOTED. REMOVAL SHALL BE ACCOMPLISHED BY METHODS THAT WILL NOT DAMAGE THE STEEL AND THE COST WILL BE INCLUDED IN THE PAY ITEM COVERING REMOVAL OF THE EXISTING CONCRETE.

PROTECTIVE COAT SHALL BE APPLIED TO AREAS OF NEW CONCRETE ONLY.

EXISTING REINFORCEMENT BARS EXTENDING INTO THE REMOVAL AREA SHALL BE CLEANED, STRAIGHTENED AND INCORPORATED INTO THE NEW CONSTRUCTION. ANY REINFORCEMENT BARS THAT ARE DAMAGED DURING CONCRETE REMOVAL SHALL BE REPLACED WITH AN APPROVED BAR SPLICER OR ANCHORAGE SYSTEM. COST INCLUDED WITH CONCRETE REMOVAL.

JOINT OPENING SHALL BE ADJUSTED ACCORDING TO ARTICLE 520.04 OF THE STANDARD SPECIFICATIONS WHEN THE DECK IS POURED AT AN AMBIENT TEMPERATURE OTHER THAN 50 DEGREES F.



PLAN
STRUCTURE NO. 019-0036
EXISTING RIPRAP ON PLAN VIEW
HAS NOT BEEN SHOWN FOR CLARITY



Expires 11-30-2022
David Carl Puze
03/10/2021

TOTAL BILL OF MATERIAL

ITEM	UNIT	TOTAL
CONCRETE REMOVAL	CU. YD.	14.6
CONCRETE SUPERSTRUCTURE	CU. YD.	14.7
REINFORCEMENT BARS	POUND	2260
EPOXY COATED		
BAR SPLICERS	EACH	26
PREFORMED JOINT STRIP SEAL	FOOT	120
DECK SLAB REPAIR (PARTIAL DEPTH)	SQ. YD.	70
PROTECTIVE COAT	SQ. YD.	45

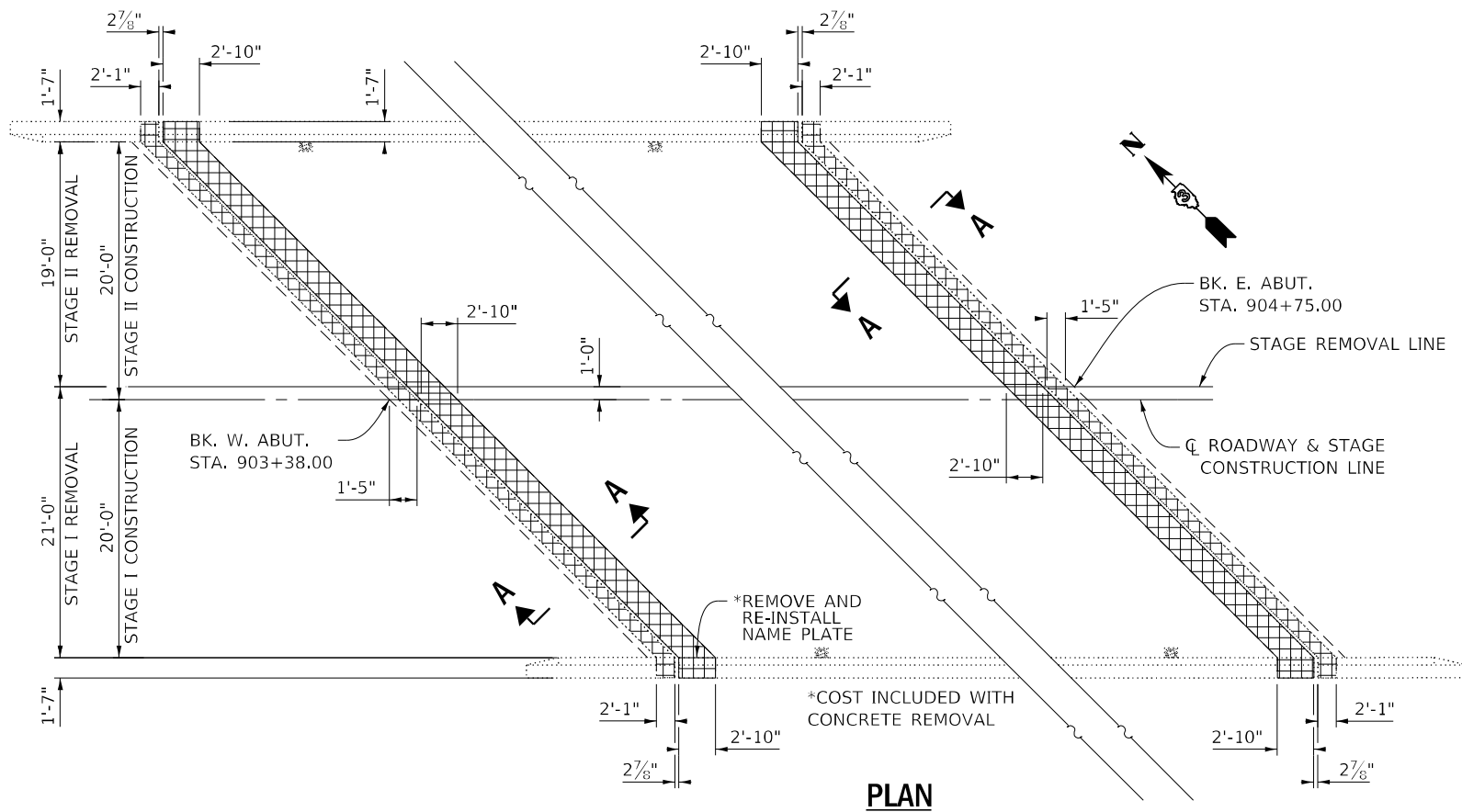
MODEL: Default
 FILE NAME: p:\pub\mbaronm.dwt\illinc\gov\PIWDOT\Documents\IBOT_Office\Drawings\Projects\0366L54\CD00\0366L54-cover.dgn

USER NAME = woodshankl	DESIGNED -	REVISED -
	DRAWN -	REVISED -
PLOT SCALE = 40,0000 */ in.	CHECKED -	REVISED -
PLOT DATE = 2/3/2021	DATE -	REVISED -

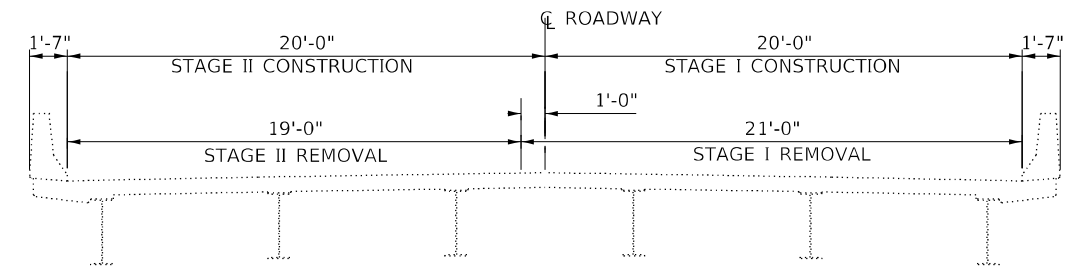
STATE OF ILLINOIS
DEPARTMENT OF TRANSPORTATION

PLAN AND ELEVATION FOR	
STRUCTURE NO. 019-0036	
SCALE:	SHEET 1 OF 7 SHEETS STA. TO STA.

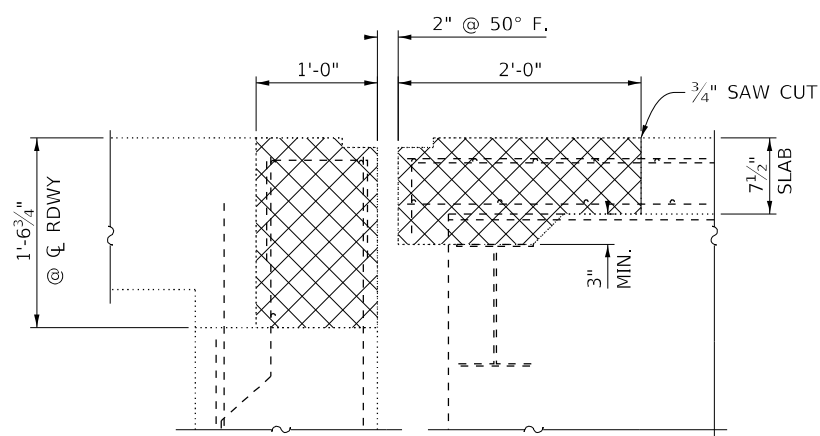
F.A.P. RTE.	SECTION	COUNTY	TOTAL SHEETS	SHEET NO.
573	(116R-2BR-1)BR	DEKALB	19	11
			CONTRACT NO. 66L54	
			ILLINOIS FED. AID PROJECT	



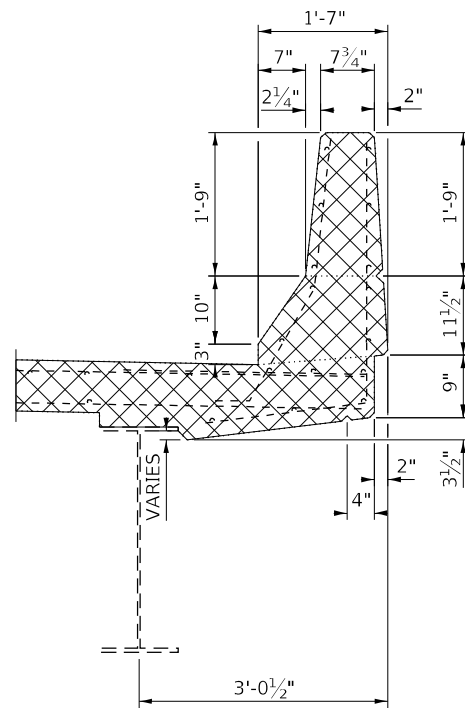
PLAN



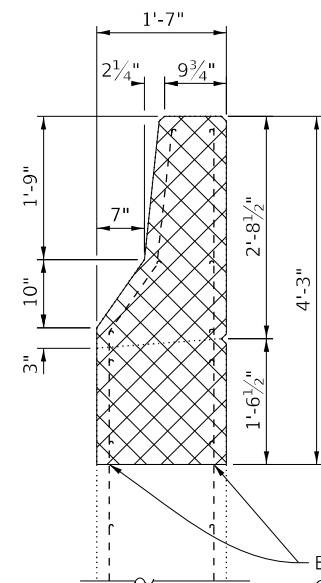
CROSS SECTION
LOOKING EAST



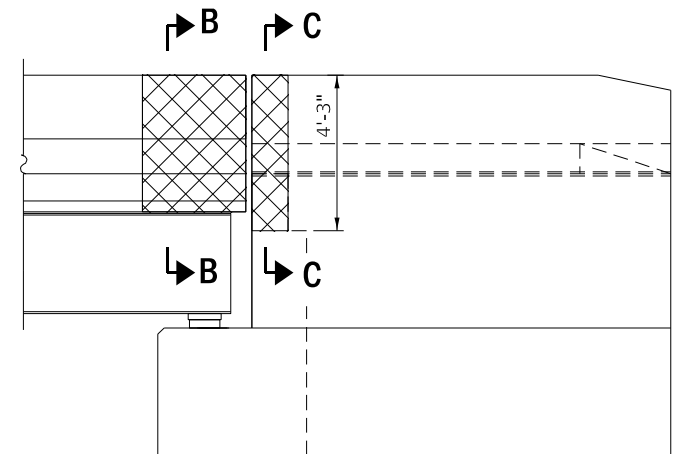
SECTION A-A
DIMENSIONS AT RIGHT ANGLES



SECTION B-B



SECTION C-C



EXTERIOR VIEW OF PARAPET

MODEL: Default
 FILE NAME: p:\pub\baronon.dwg
 PROJECT: ILLINOIS DOT
 OFFICE: DISTRICT 3
 PROJECT: 116R-2BR-1BRR
 OFFICE: DISTRICT 3
 PROJECT: 116R-2BR-1BRR
 FILE NAME: p:\pub\baronon.dwg

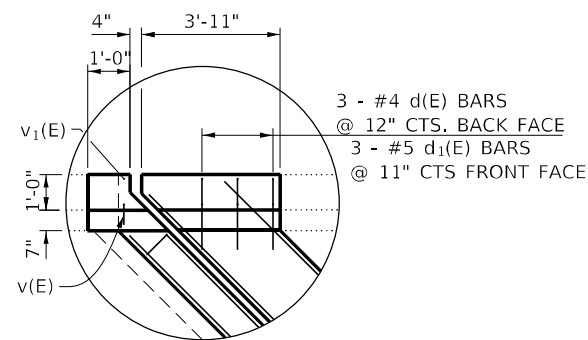
USER NAME = woodshank1	DESIGNED -	REVISED -
DRAWN -	REVISED -	REVISED -
PLOT SCALE = 40,0000 * / in.	CHECKED -	REVISED -
PLOT DATE = 2/3/2021	DATE -	REVISED -

STATE OF ILLINOIS
DEPARTMENT OF TRANSPORTATION

REMOVAL DETAILS FOR
STRUCTURE NO. 019-0036

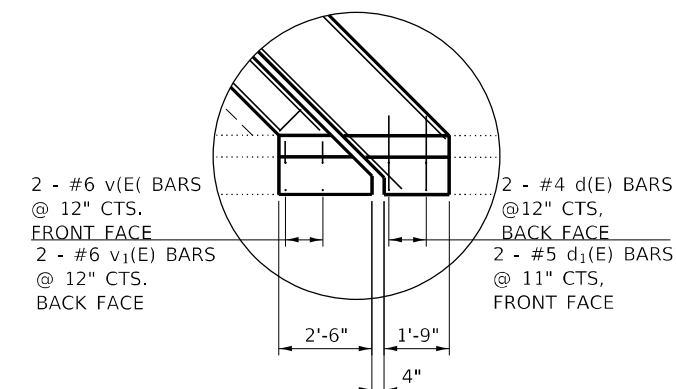
SCALE: SHEET 2 OF 7 SHEETS STA. TO STA.

F.A.P. RTE.	SECTION	COUNTY	TOTAL SHEETS	SHEET NO.
573	(116R-2BR-1)BRR	DEKALB	19	12
			CONTRACT NO. 66L54	
			ILLINOIS FED. AID PROJECT	



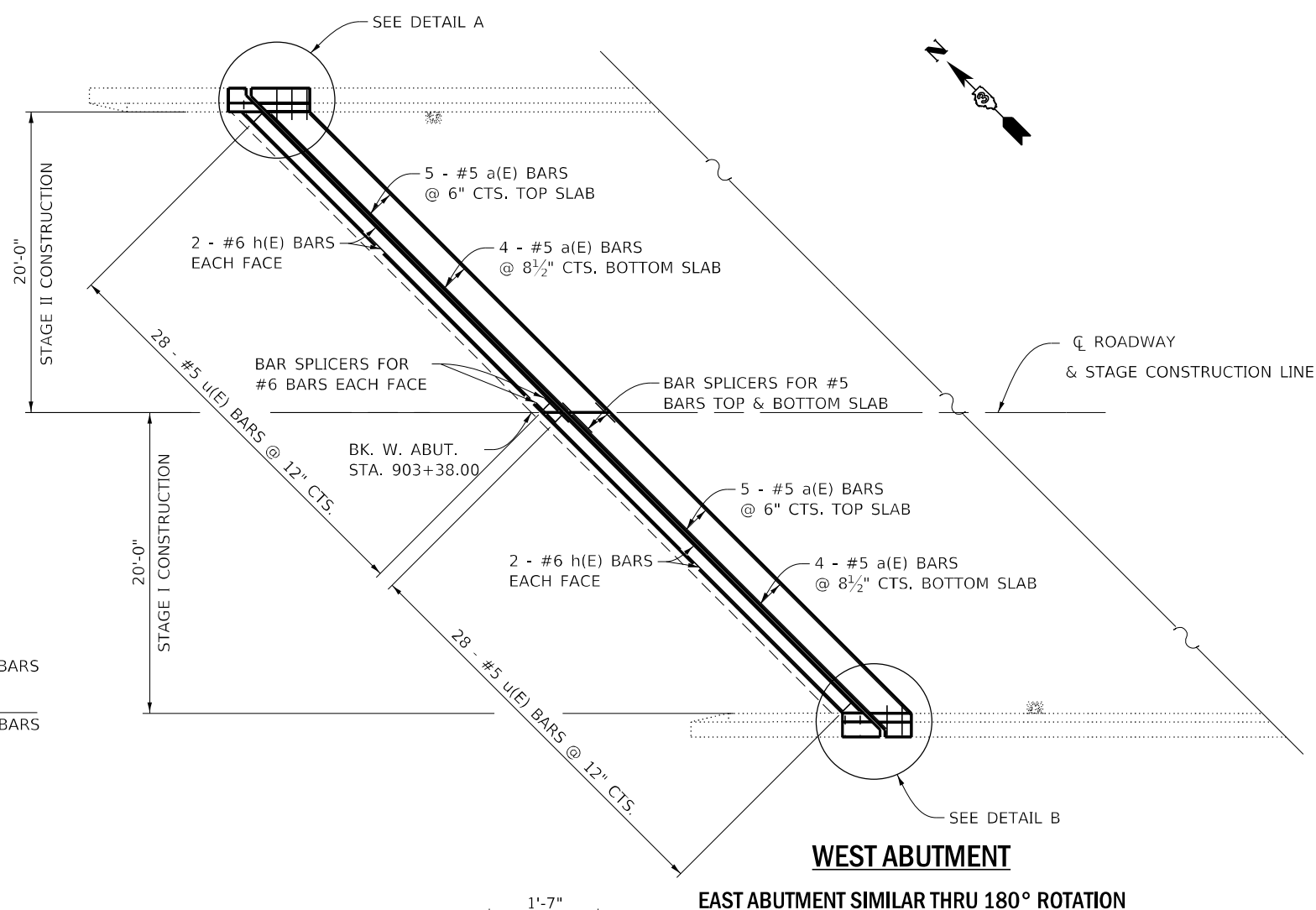
DETAIL A

NW CORNER
SE CORNER SIMILAR



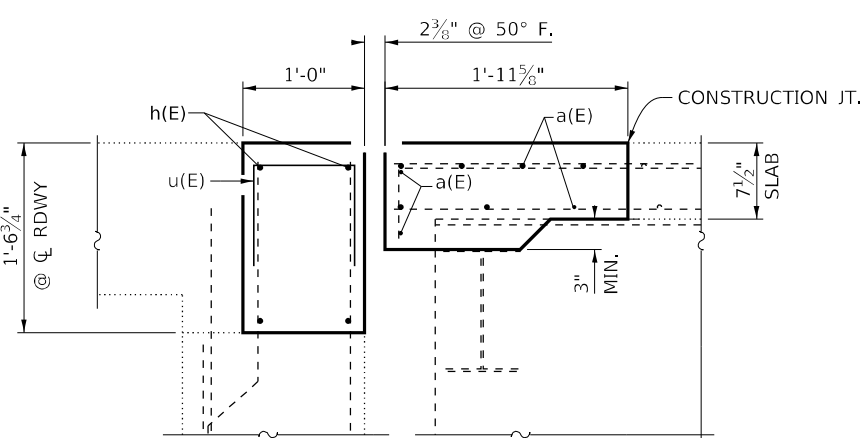
DETAIL B

SW CORNER
NE CORNER SIMILAR



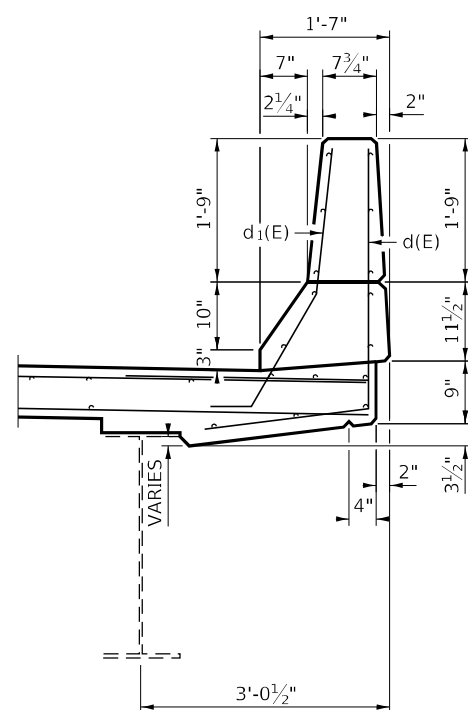
WEST ABUTMENT

EAST ABUTMENT SIMILAR THRU 180° ROTATION

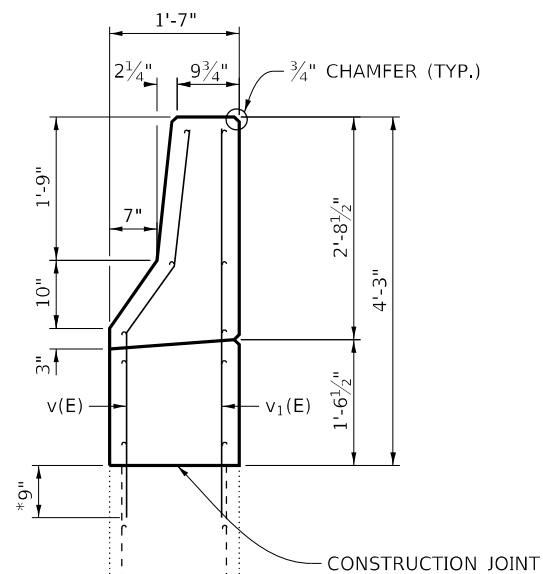


SECTION A-A

DIMENSIONS AT RIGHT ANGLES

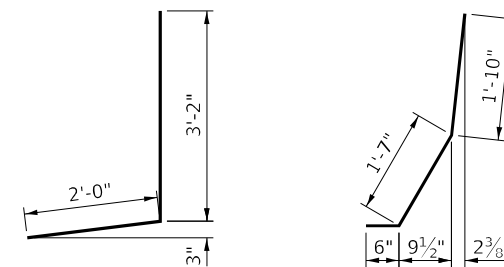


SECTION THRU CURB



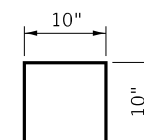
SECTION THRU WIGN WALL

*v(E) BARS SHALL BE DRILLED AND GROUTED INTO EXISTING CONCRETE ACCORDING TO SECTION 584 OF THE STANDARD SPECIFICATIONS.

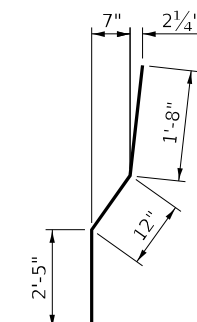


d(E)

d1(E)



u(E)



v(E)

NOTES:

1. WHEN NECESSARY, THE CONTRACTOR SHALL CUT THE a(E) BARS TO FIT THE CONSTRUCTION.
2. UNLESS OTHERWISE NOTED, ALL REINFORCEMENT BARS SHALL HAVE A MIN. OF 1/2" CL. FROM FACE OF CONCRETE.
3. INTERIOR VERTICAL AND HORIZONTAL SURFACES OF NEW CONCRETE SHALL HAVE ONE APPLICATION OF "BRIDGE DECK CONCRETE SEALER".

**SUPERSTRUCTURE
BILL OF MATERIAL
FOR TWO ABUTMENTS**

BAR	NO.	SIZE	LENGTH	SHAPE
a(E)	36	#5	30'-2"	
d(E)	10	#4	5'-2"	L
d1(E)	10	#5	3'-11"	L
h(E)	16	#6	27'-11"	
u(E)	112	#5	2'-6"	U
v(E)	6	#6	5'-1"	L
v1(E)	6	#6	4'-10"	L
CONCRETE REMOVAL			CU. YD.	14.6
CONCRETE SUPERSTRUCTURE			CU. YD.	14.7
REINFORCEMENT BARS EPOXY COATED			POUND	2260

MODEL: Default
FILE NAME: p:\pub\harron.dwg
PROJECT: ILLINOIS DOT ILLINDOT\Documents\DOT Office\Drawings\3\Projects\0366LSA\CADD\Drawings\366LSA-cover.dwg

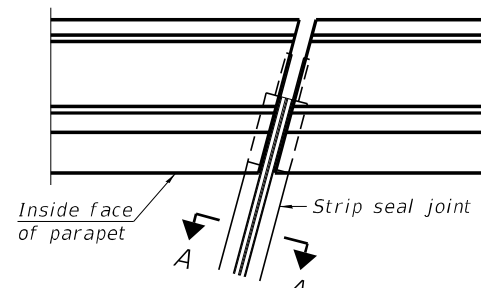
USER NAME = woodshank1	DESIGNED -	REVISED -
	DRAWN -	REVISED -
PLOT SCALE = 40,0000 */ in.	CHECKED -	REVISED -
PLOT DATE = 2/3/2021	DATE -	REVISED -

**STATE OF ILLINOIS
DEPARTMENT OF TRANSPORTATION**

**RECONSTRUCTION DETAILS FOR
STRUCTURE NO. 019-0036**

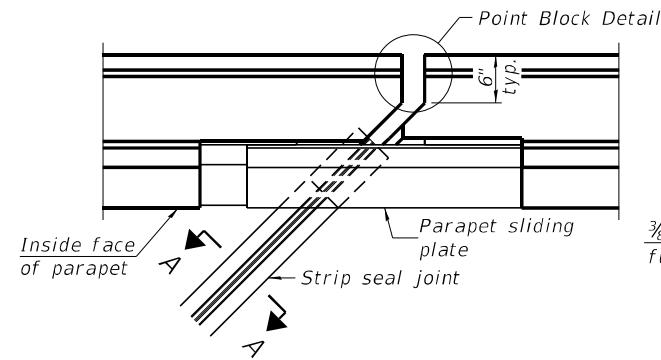
SCALE: SHEET 3 OF 7 SHEETS STA. TO STA.

F.A.P. RTE.	SECTION	COUNTY	TOTAL SHEETS	SHEET NO.
573	(116R-2BR-1)BRR	DEKALB	19	13
			CONTRACT NO. 66L54	
ILLINOIS FED. AID PROJECT				

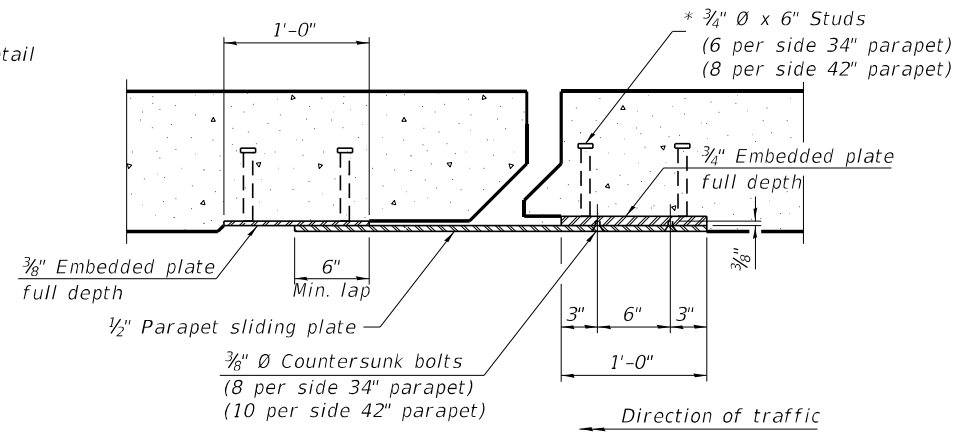


FOR SKEWS $\leq 30^\circ$

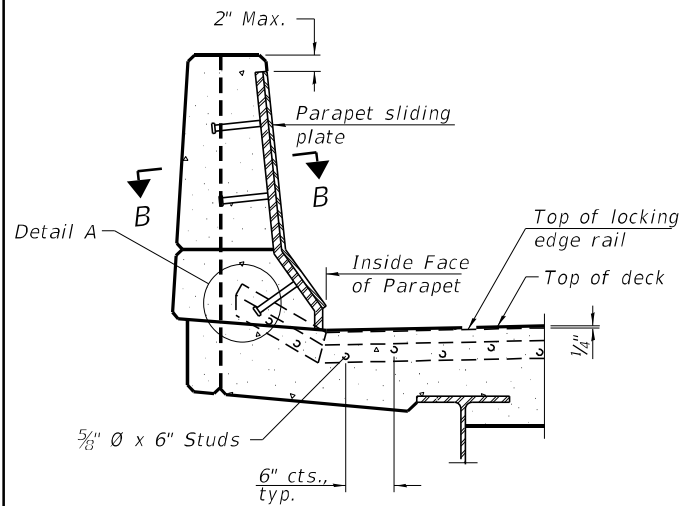
PLAN AT PARAPET



FOR SKEWS $> 30^\circ$

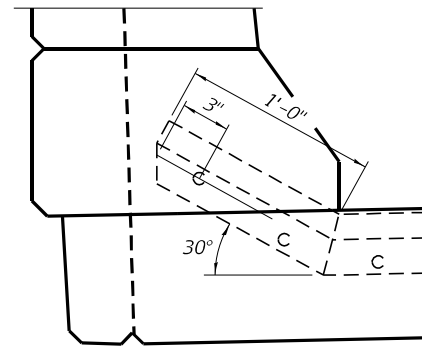


SECTION B-B

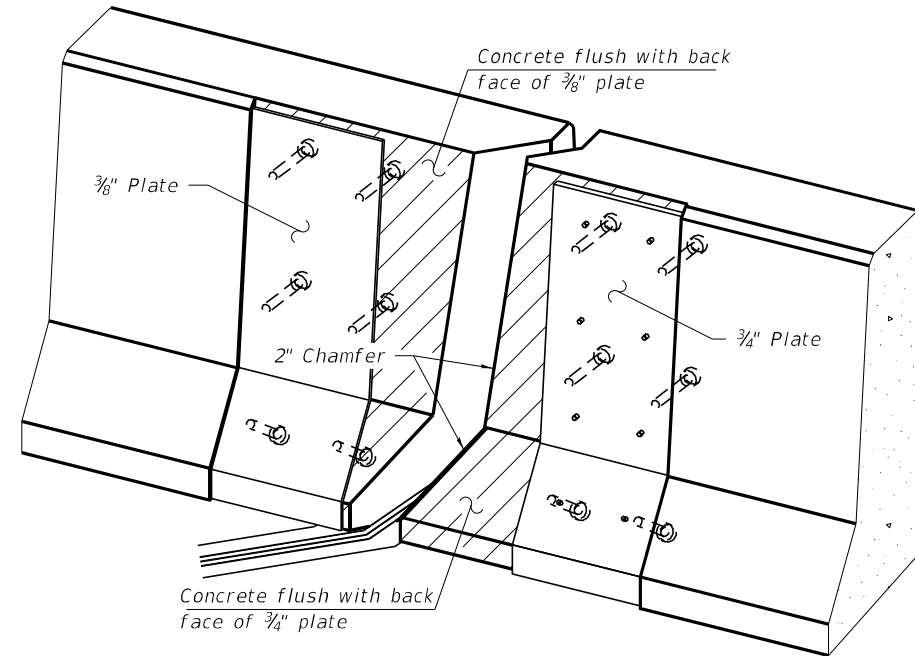


ELEVATION AT PARAPET

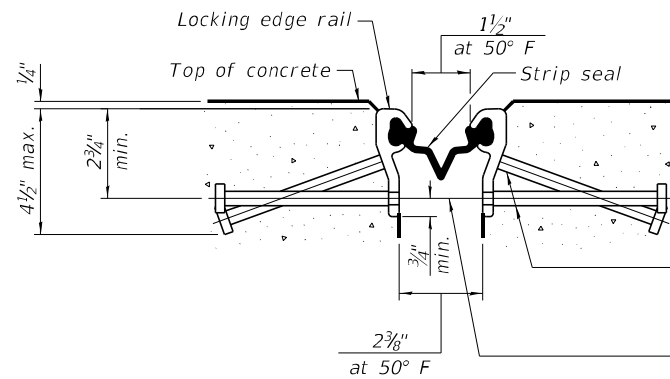
(Skews $> 30^\circ$ shown. Skews $\leq 30^\circ$ similar except as shown in plan view.)



DETAIL A



TRIMETRIC VIEW
(Showing embedded plates only)



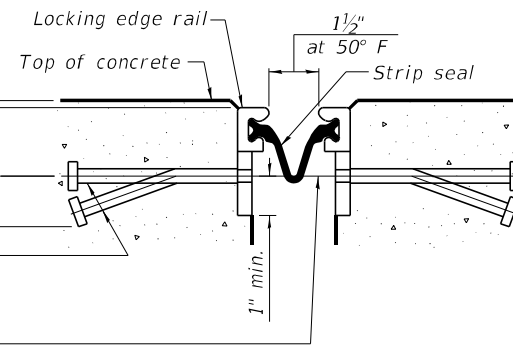
SHOWING ROLLED RAIL JOINT

* $5/8"$ ϕ x 6" studs @ 6" cts. (alternate angled/bent studs with horizontal studs)

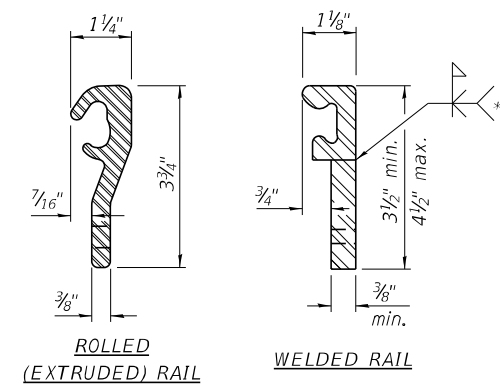
$3/8"$ ϕ threaded rods in $7/16"$ ϕ holes at $\pm 4'-0"$ cts. for holding the proper joint opening based on the temperature during the deck pour. Place to miss studs. All rods shall be burned, or sawed off flush with the plates after concrete is set.

SECTION A-A

* Granular or solid flux filled headed studs conforming to Article 1006.32 of the Std. Specs., automatically end welded.

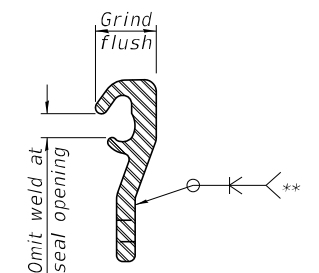


SHOWING WELDED RAIL JOINT



LOCKING EDGE RAILS

** Back gouge not required if complete joint penetration is verified by mock-up.



LOCKING EDGE RAIL SPLICE

The inside of the locking edge rail groove shall be free of weld residue. Rolled rail shown, welded rail similar.

BILL OF MATERIAL

Item	Unit	Total
Preformed Joint Strip Seal	Foot	120

EJ-SS-S

8-11-17

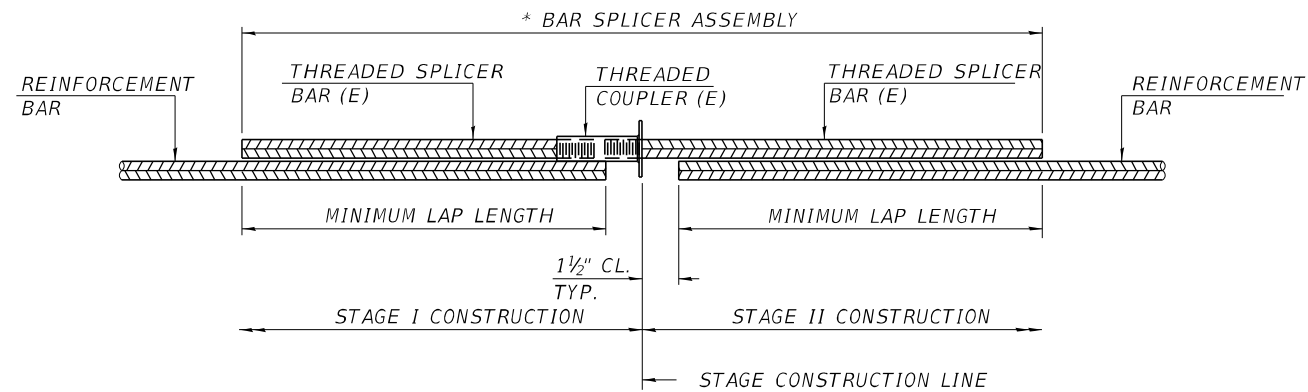
STATE OF ILLINOIS
DEPARTMENT OF TRANSPORTATION

PREFORMED JOINT STRIP SEAL
FOR STRUCTURE NO. 019-0036

SCALE: SHEET 4 OF 7 SHEETS STA. TO STA.

F.A.P. RTE.	SECTION	COUNTY	TOTAL SHEETS	SHEET NO.
573	(116R-2BR-1)BRR	DEKALB	19	14
ILLINOIS FED. AID PROJECT			CONTRACT NO. 66L54	

MODEL: Default FILE NAME: p:\pub\baronon.edu\illinc\gov\PIWDOT\Documents\IBDOT_Offices\District 3\Projects\0366L54\CADD\0366L54-cover.dgn

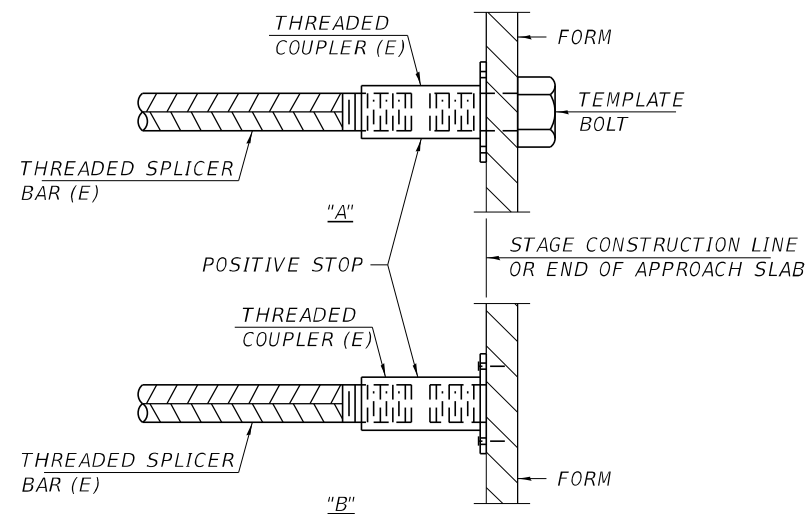


STANDARD BAR SPLICER ASSEMBLY PLAN
(ALL COMPONENTS SHALL BE PROVIDED FROM ONE SUPPLIER)

THREADED SPLICER BAR LENGTH = MIN. LAP LENGTH + 1 1/2" + THREAD LENGTH

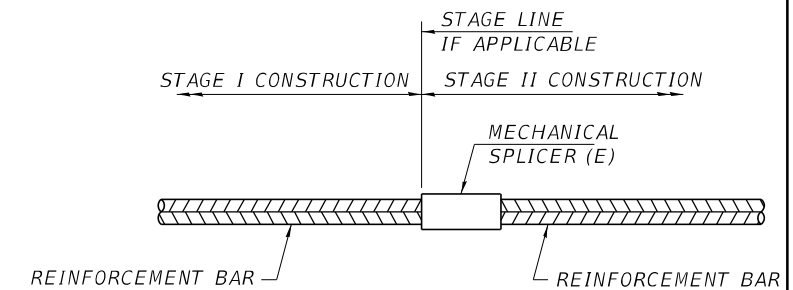
* EPOXY NOT REQUIRED ON BAR SPLICER ASSEMBLY COMPONENTS USED IN CONJUNCTION WITH BLACK BARS.

LOCATION	BAR SIZE	NO. ASSEMBLIES REQUIRED	MINIMUM LAP LENGTH
WEST END DECK	#5	9	3'-0"
WEST ABUTMENT	#6	4	3'-7"
EAST END DECK	#5	9	3'-0"
EAST ABUTMENT	#6	4	3'-7"



INSTALLATION AND SETTING METHODS

"A" : SET BAR SPLICER ASSEMBLY BY MEANS OF A TEMPLATE BOLT.
 "B" : SET BAR SPLICER ASSEMBLY BY NAILING TO WOOD FORMS OR CEMENTING TO STEEL FORMS.
 (E) : INDICATES EPOXY COATING.



STANDARD MECHANICAL SPLICER

LOCATION	BAR SIZE	NO. ASSEMBLIES REQUIRED

NOTES:
 SPLICER BARS SHALL BE DEFORMED WITH THREADED ENDS AND HAVE A MINIMUM 60 KSI YIELD STRENGTH.
 ALL REINFORCEMENT SHALL BE LAPPED AND TIED TO THE SPLICER BARS.
 BAR SPLICER ASSEMBLIES SHALL BE EPOXY COATED ACCORDING TO THE REQUIREMENTS FOR REINFORCEMENT BARS. SEE SECTION 508 OF THE STANDARD SPECIFICATIONS.
 SEE APPROVED LIST OF BAR SPLICER ASSEMBLIES AND MECHANICAL SPLICERS FOR ALTERNATIVES.

BSD-1

1-1-2020

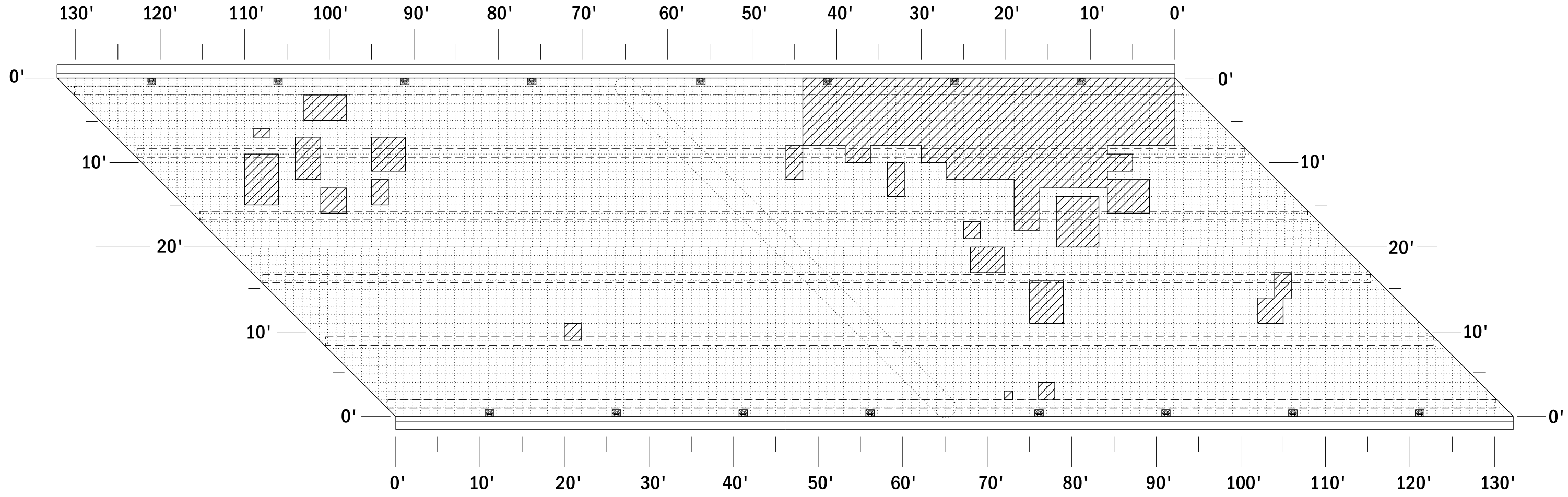
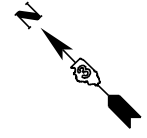
STATE OF ILLINOIS
 DEPARTMENT OF TRANSPORTATION

BAR SPLICER ASSEMBLY AND MECHANICAL SPLICER DETAILS
 STRUCTURE NO. 019-0036

SCALE: SHEET 5 OF 7 SHEETS STA. TO STA.

F.A.P. RTE.	SECTION	COUNTY	TOTAL SHEETS	SHEET NO.
573	(116R-2BR-1)BRR	DEKALB	19	15
CONTRACT NO. 66L54			ILLINOIS FED. AID PROJECT	

MODEL: Default
 FILE NAME: \\paulmccormack.com\dtd\illinois\gov\PWD\DOT\Documents\DOT Office\Drawings\Projects\019\019-0036\15-1-cover.dgn



NOTE:
 DECK SLAB REPAIR AREAS HAVE BEEN ESTIMATED PER FIELD SURVEY.
 THE ENGINEER SHALL SOUND THE ENTIRE DECK SURFACE AT TIME OF CONSTRUCTION
 AND LOCATE ACTUAL REPAIR AREAS ON THE "AS-BUILT" PLAN DETAIL.

BILL OF MATERIAL

ITEM	UNIT	TOTAL
DECK SLAB REPAIR (PARTIAL)	SQ. YD.	70

MODEL: Default
 FILE NAME: p:\pub\baronm.dwt\illinois.gov\PIWDOT\Documents\DOT_Offices\District 3\Projects\ID366LSA\CADD\DATA\ID366LSA-cover.dgn

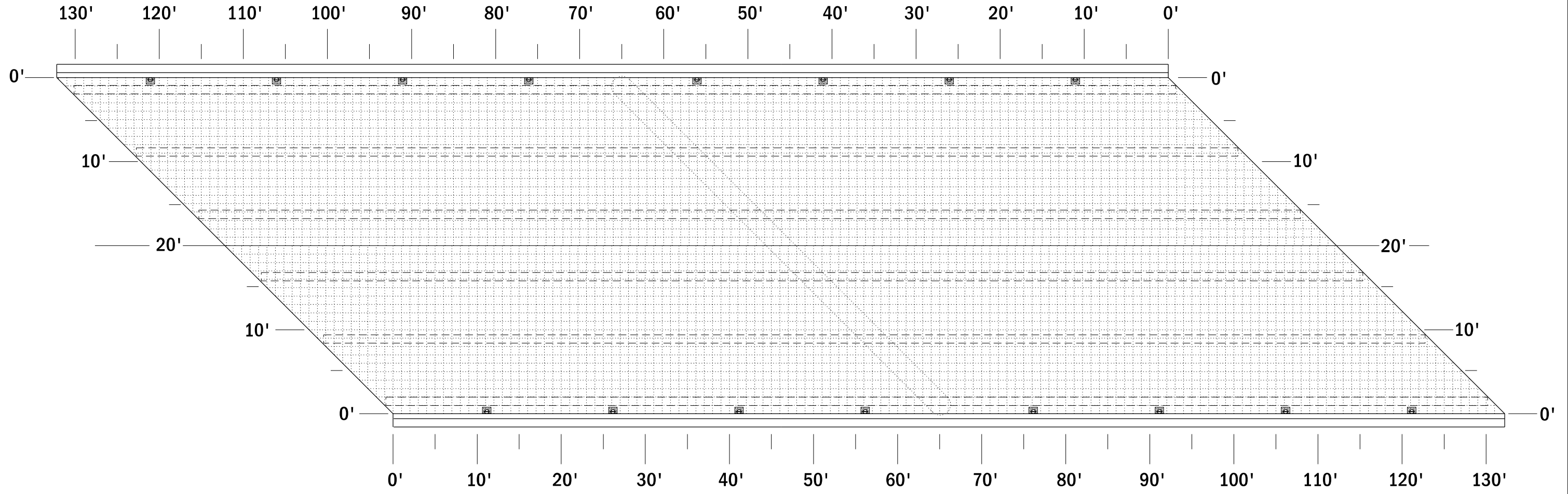
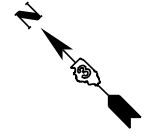
USER NAME = woodshank1	DESIGNED -	REVISED -
	DRAWN -	REVISED -
PLOT SCALE = 40,0000 * / in.	CHECKED -	REVISED -
PLOT DATE = 2/1/2021	DATE -	REVISED -

STATE OF ILLINOIS
DEPARTMENT OF TRANSPORTATION

DECK SLAB REPAIR DETAILS

SCALE: SHEET 6 OF 7 SHEETS STA. TO STA.

F.A.P. RTE.	SECTION	COUNTY	TOTAL SHEETS	SHEET NO.
573	(116R-2BR-1)BRR	DEKALB	19	16
			CONTRACT NO. 66L54	
		ILLINOIS	FED. AID PROJECT	



NOTE:
THE CONTRACTOR SHALL SOUND THE ENTIRE DECK SURFACE AND LOCATED EXACT LOCATION OF DECK SLAB REPAIRS ON THESE "AS-BUILT" DETAILS.

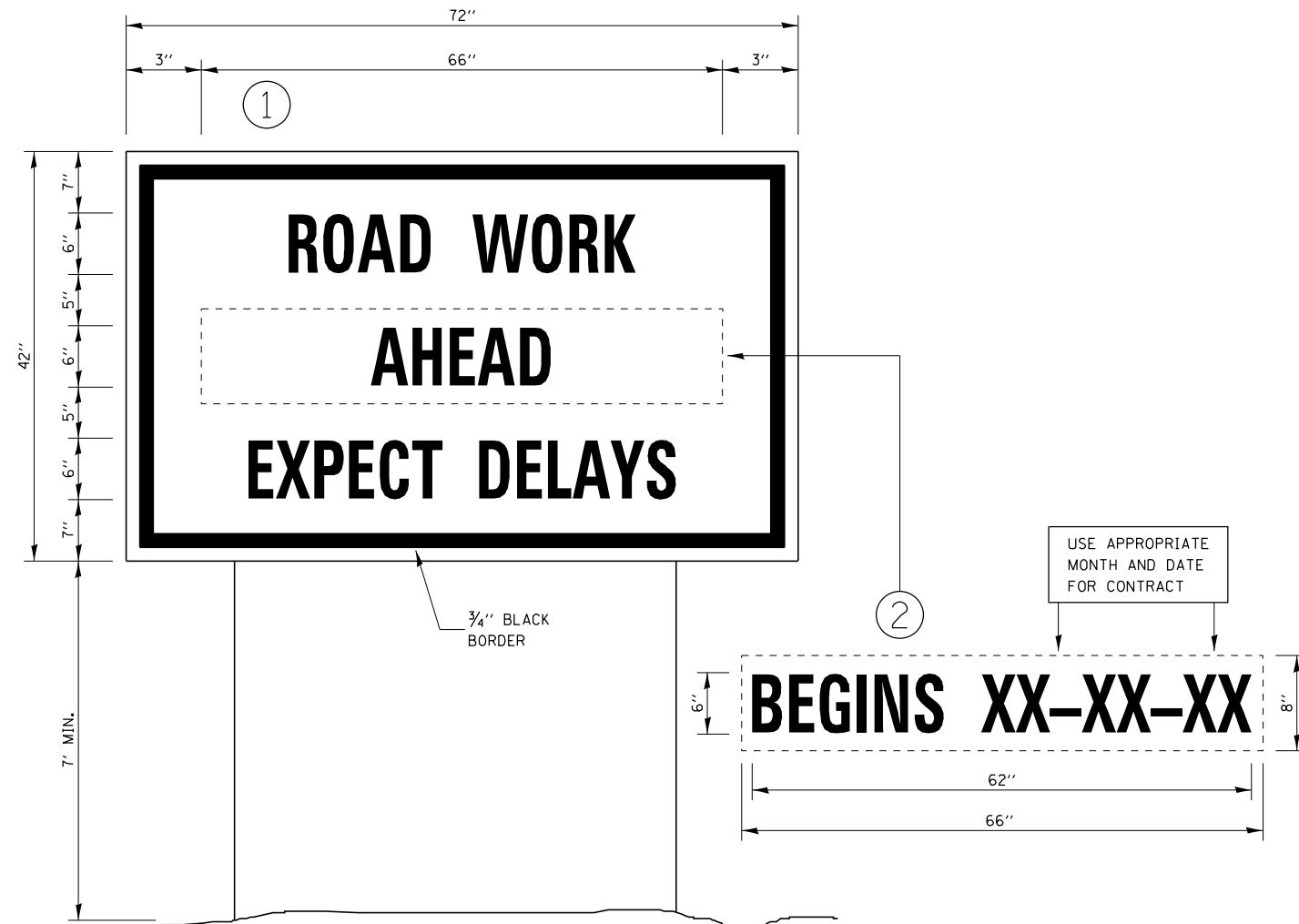
MODEL: Default
 FILE NAME: \\paulhammon.dot.illinois.gov\PWDOT\Documents\DOT_Offices\District 3\Projects\ID366LSA\CADD\DATA\ID366LSA-cover.dgn

USER NAME = woodshank1	DESIGNED -	REVISED -
	DRAWN -	REVISED -
PLOT SCALE = 40,0000 * / in.	CHECKED -	REVISED -
PLOT DATE = 2/1/2021	DATE -	REVISED -

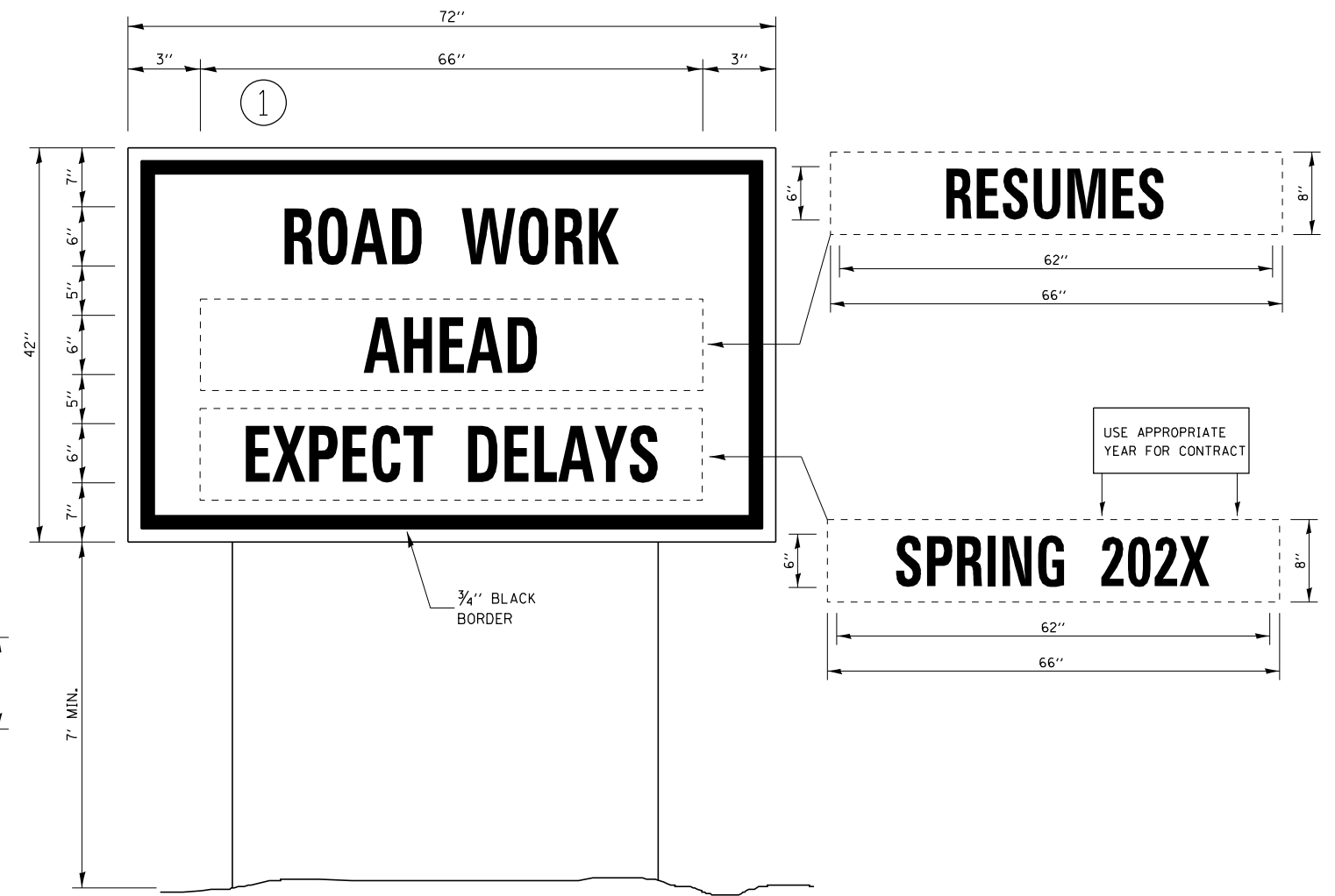
STATE OF ILLINOIS
DEPARTMENT OF TRANSPORTATION

DECK SLAB REPAIR DETAILS "AS-BUILTS"	
SCALE:	SHEET 7 OF 7 SHEETS STA. TO STA.

F.A.P. RTE.	SECTION	COUNTY	TOTAL SHEETS	SHEET NO.
573	(116R-2BR-1)BRR	DEKALB	19	17
ILLINOIS FED. AID PROJECT			CONTRACT NO. 66L54	



TEMPORARY INFORMATION SIGNING



WINTER SHUT DOWN SIGNING

NOTES:

1. USE 6" D BLACK LETTERING ON FLOURESENT ORANGE BACKGROUND.
2. ERECT SIGNS AT LOCATIONS IN ADVANCE OF THE "ROAD CONSTRUCTION AHEAD" SIGNS AS DIRECTED BY THE ENGINEER.
3. ERECT SIGN ① WITH INSTALLED PANEL ② A MINIMUM OF ONE WEEK PRIOR TO THE START OF THE LANE CLOSURE.
4. REMOVE PANEL ② ON THAT DATE.
5. SEE SPECIAL PROVISION "TEMPORARY INFORMATION SIGNING" FOR ADDITIONAL INFORMATION.
6. WILL BE PAID FOR PER SQ FT AS "TEMPORARY INFORMATION SIGNING". EACH SIGN = 21 SQ FT AND THE DATE PANEL ② WILL NOT BE MEASURED SEPARATELY FOR PAYMENT.

MODEL: Default
 FILE NAME: \\paulhammon.dot.illinois.gov\PIWDOT\Documents\DOT_Offices\District 3\Projects\116R-2BR-1\BRR\116R-2BR-1-Cover.dgn

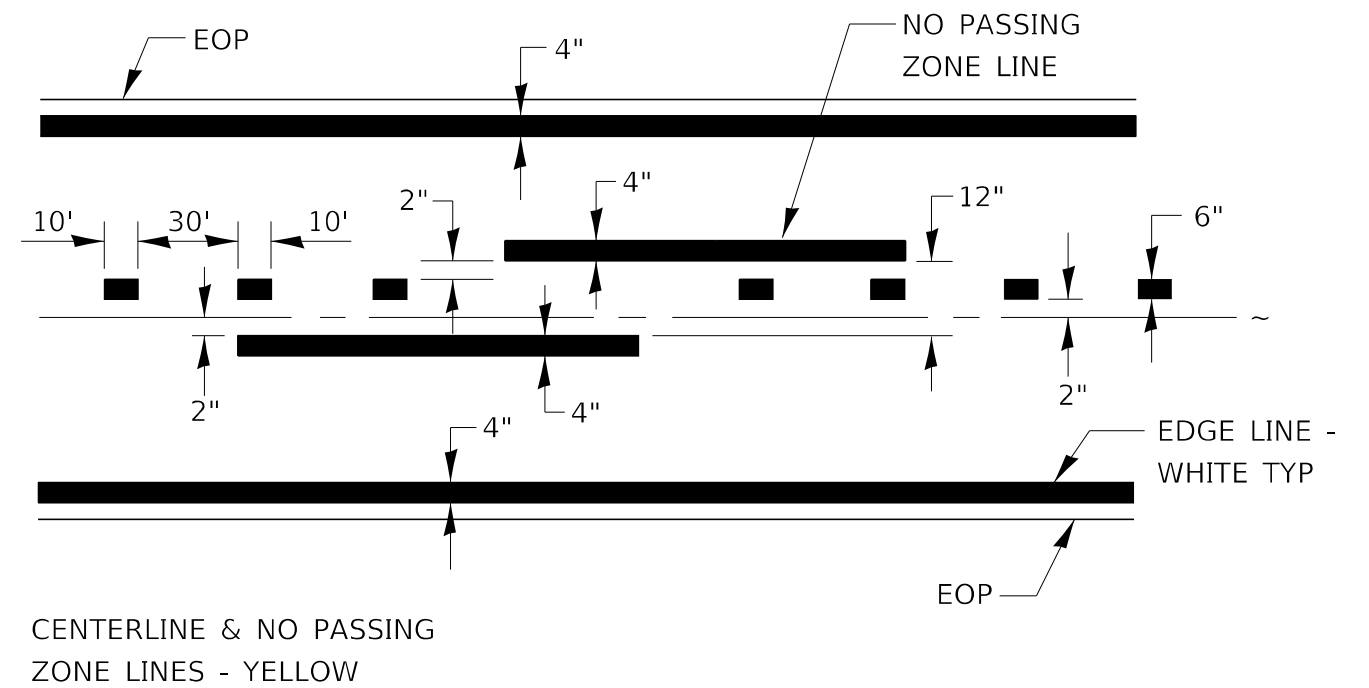
USER NAME = woodshank1	DESIGNED -	REVISED -
	DRAWN -	REVISED -
PLOT SCALE = 40,0000 */ in.	CHECKED -	REVISED -
PLOT DATE = 2/1/2021	DATE -	REVISED -

**STATE OF ILLINOIS
DEPARTMENT OF TRANSPORTATION**

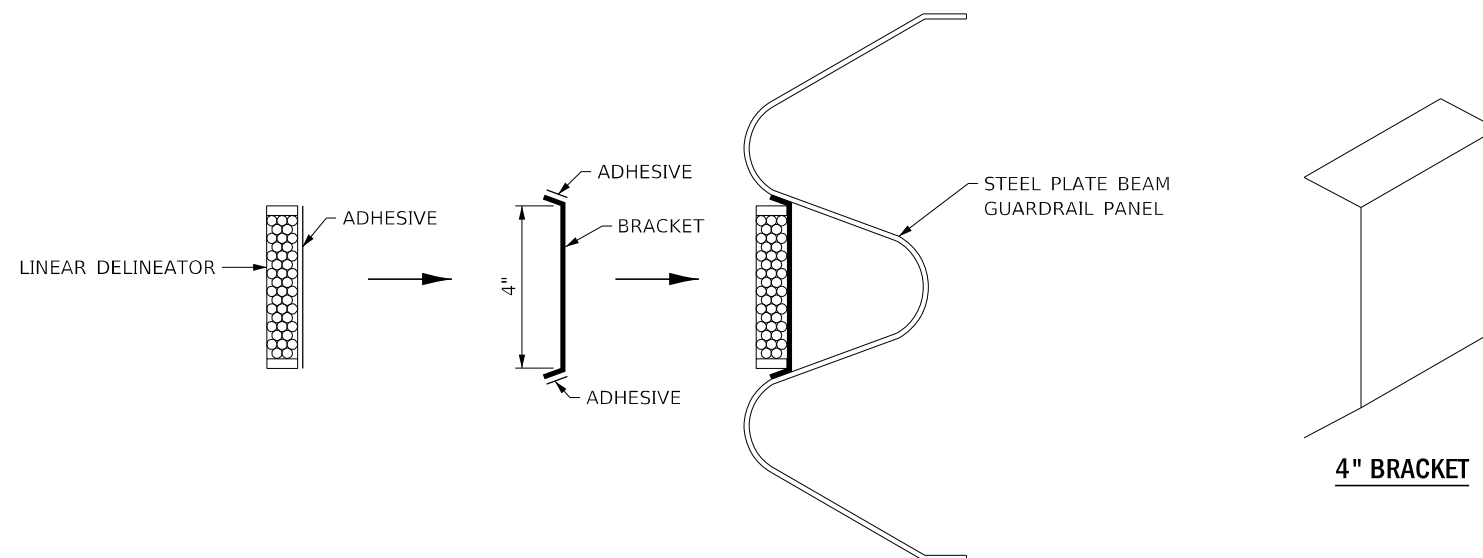
TEMPORARY INFORMATION SIGNING

SCALE: SHEET 1 OF 1 SHEETS STA. TO STA.

F.A.P. RTE.	SECTION	COUNTY	TOTAL SHEETS	SHEET NO.
573	(116R-2BR-1)BRR	DEKALB	19	18
			CONTRACT NO. 66L54	
ILLINOIS FED. AID PROJECT				



PAVEMENT MARKING



LINEATOR DELINEATOR APPLICATION TO STANDARD GALVANIZED GUARDRAIL

LINEATOR DELINEATOR SHALL BE APPLIED ACCORDING TO THE MANUFACTURER'S RECOMMENDATIONS

STATE OF ILLINOIS
DEPARTMENT OF TRANSPORTATION

MISCELLANEOUS DETAILS

SCALE: SHEET 1 OF 1 SHEETS STA. TO STA.

F.A.P. RTE.	SECTION	COUNTY	TOTAL SHEETS	SHEET NO.
573	(116R-2BR-1)BRR	DEKALB	19	19
CONTRACT NO. 66L54			ILLINOIS FED. AID PROJECT	