

STATE OF ILLINOIS
DEPARTMENT OF TRANSPORTATION

F.A. RTE.	SECTION	COUNTY	TOTAL SHEETS	SHEET NO.
VARIOUS	D3 LIGHTING REPAIR 2021-6	DEKALB	3	1
		ILLINOIS	CONTRACT NO. 66L66	

INDEX OF SHEETS

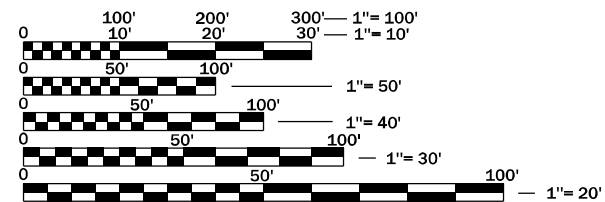
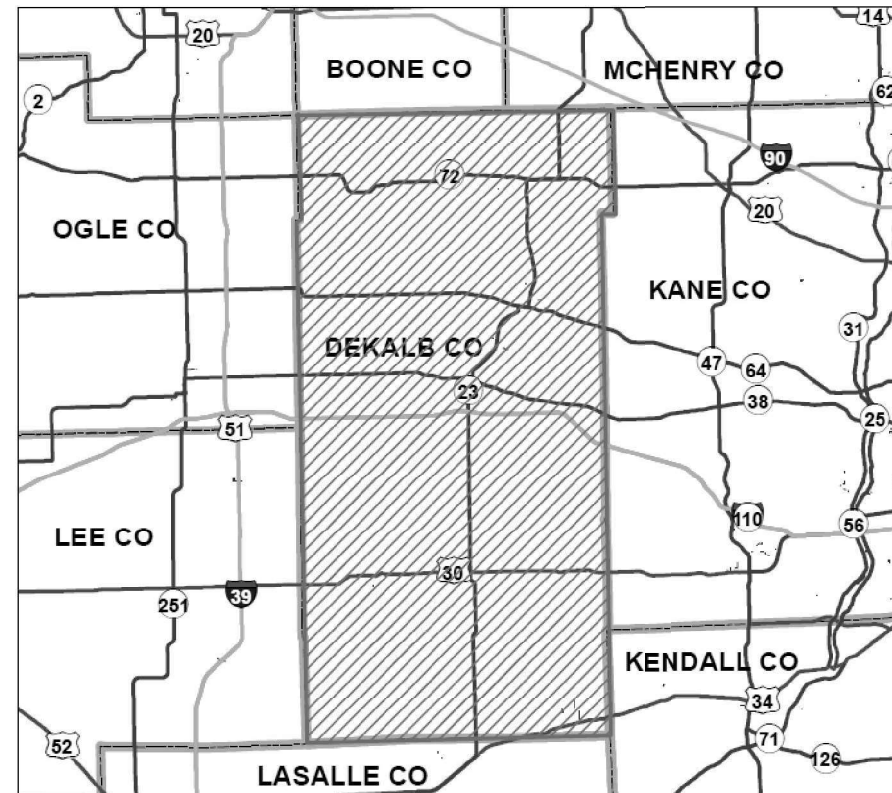
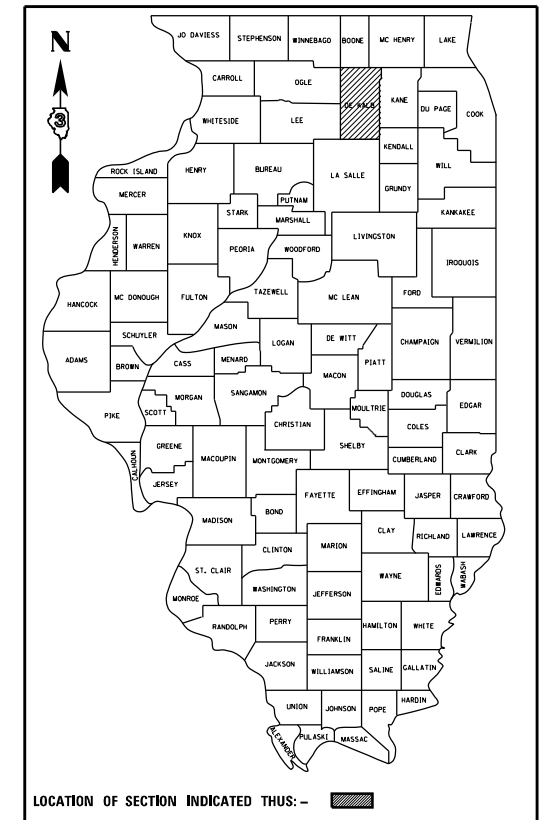
1. COVER SHEET
2. GENERAL NOTES & HIGHWAY STANDARDS
3. SUMMARY OF QUANTITIES

PROPOSED HIGHWAY PLANS

VARIOUS ROUTES
SECTION D3 LIGHTING REPAIR 2021-6
PROJECT
AREA SIX ON CALL LIGHTING REPAIR
DEKALB COUNTY

C-93-062-21

D-93-028-21



FULL SIZE PLANS HAVE BEEN PREPARED USING STANDARD ENGINEERING SCALES. REDUCED SIZED PLANS WILL NOT CONFORM TO STANDARD SCALES. IN MAKING MEASUREMENTS ON REDUCED PLANS, THE ABOVE SCALES MAY BE USED.

J.U.L.I.E.
JOINT UTILITY LOCATION INFORMATION FOR EXCAVATION
1-800-892-0123
OR 811

PROJECT ENGINEER: YOGESH PATEL P.E.
UNIT CHIEF: DAN DEVINE P.E.
TOWNSHIPS: VARIOUS
DISTRICT 3 NO. (815) 434-6131
CONTRACT NO. 66L66

STATE OF ILLINOIS
DEPARTMENT OF TRANSPORTATION

SUBMITTED February 05, 20 21
[Signature]
REGIONAL ENGINEER

March 19, 2021
[Signature]
ENGINEER OF DESIGN AND ENVIRONMENT

March 19, 2021
[Signature]
DIRECTOR OF HIGHWAYS PROJECT IMPLEMENTATION

**PRINTED BY THE AUTHORITY
OF THE STATE OF ILLINOIS**

LIST OF ILLINOIS DOT HIGHWAY STANDARDS

701001-02	OFF-ROAD OPERATIONS 2L, 2W, MORE THAN 15' (4.5 m) AWAY
701006-05	OFF-ROAD OPERATIONS 2L, 2W, 15' (4.5 m) TO 24" (600 mm) FROM PAVEMENT EDGE
701101-05	OFF-ROAD OPERATIONS MULTILANE, 15' (4.5 m) TO 24" (600 mm) FROM PAVEMENT EDGE
701106-02	OFF-ROAD OPERATIONS, MULTILANE, MORE THAN 15' (4.5 m) AWAY
701201-05	LANE CLOSURE, 2L, 2W, DAY ONLY, FOR SPEEDS ≥ 45 MPH
701206-05	LANE CLOSURE, 2L, 2W, NIGHT ONLY, FOR SPEEDS ≥ 45 MPH
701301-04	LANE CLOSURE, 2L, 2W, SHORT TIME OPERATIONS
701421-08	LANE CLOSURE, MULTILANE, DAY OPERATIONS ONLY, FOR SPEEDS ≥ 45 MPH TO 55 MPH
701422-10	LANE CLOSURE, MULTILANE, FOR SPEEDS ≥ 45 MPH TO 55 MPH
701426-09	LANE CLOSURE, MULTILANE INTERMITTENT OR MOVING OPERATION, FOR SPEEDS ≥ 45 MPH
701427-05	LANE CLOSURE, MULTILANE INTERMITTENT OR MOVING OPERATION, FOR SPEEDS ≤ 40 MPH
701601-09	URBAN LN CLOSURE 2L 2W WITH BIDIRECT LEFT TURN LN
701701-10	URBAN LANE CLOSURE, MULTILANE INTERSECTION
701901-08	TRAFFIC CONTROL DEVICES

GENERAL NOTES

THE LOCATIONS OF THE REPAIR AREAS SHALL BE DETERMINED BY THE ENGINEER.

ALL EXCAVATED MATERIAL, WHICH INCLUDED DIGGING OR GRADING OF ANY SOIL OR FILL MATERIAL, WITH THE EXCEPTION OF AGGREGATE FILLS, MUST BE INCORPORATED WITHIN THE IDOT RIGHT OF WAY DUE TO ENVIRONMENTAL DOCUMENTATION REQUIREMENTS.

ANY WORK ORDER MAY BE CANCELLED AT THE ENGINEERS DISCRETION.

NO OVERNIGHT LANE CLOSURES WILL BE ALLOWED.

ANY REFERENCE TO A STANDARD IN THESE PLANS SHALL BE INTERPRETED TO MEAN THE EDITION AS INDICATED BY THE SUBNUMBER SHOWN IN THE LIST OF STANDARDS OR THE COPY INCLUDED IN THESE PLANS.

THE CONTRACTOR IS ADVISED THAT THERE MAY BE PRESENCE OF DEPARTMENT OWNED UNDERGROUND ELECTRICAL CABLE WITHIN THE LIMITS OF THE PROPOSED IMPROVEMENT. THE CONTRACTOR SHALL REQUEST THE ILLINOIS DEPARTMENT OF TRANSPORTATION IN OTTAWA (815-434-8505) TO LOCATE THE UNDERGROUND FACILITIES, PROVIDING A MINIMUM 72 HOURS NOTICE. THE DEPARTMENT IS NOT A MEMBER OF THE JOINT UTILITY LOCATIONG INFORMATION FOR EXCAVATORS (JULIE) SYSTEM.

ALL DAMAGE TO DEPARTMENT OWNED UNDERGROUND FACILITIES, CAUSED BY THE CONTRACTOR SHALL BE REPAIRED TO THE SATISFACTION OF THE DEPARTMENT AT THE CONTRACTOR'S EXPENSE. THIS SHALL INCLUDE ALL TEMPORARY REPAIRS REQUIRED TO KEEP THE FACILITY OPERATIONAL WHILE MATERIAL IS BEING OBTAINED TO MAKE PERMANENT REPAIRS. SPLICING OF ELECTRIC CABLE WILL NOT BE ALLOWED. ELECTRIC CABLE SHALL BE REPLACED FROM POLE TO POLE OR CONTROLLER.

THE CONTRACTOR SHALL BE RESPONSIBLE FOR PROTECTING UTILITY PROPERTY FROM CONSTRUCTION OPERATIONS AS OUTLINED IN ARTICLE 107.31 OF THE STANDARD SPECIFICATIONS. THE J.U.L.I.E NUMBER IS 1-800-892-0123. A MINIMUM OF 48 HOURS ADVANCE NOTICE IS REQUIRED.

STATE OF ILLINOIS
DEPARTMENT OF TRANSPORTATION
DISTRICT THREE
AS BUILT INFORMATION

STATE OF ILLINOIS
DEPARTMENT OF TRANSPORTATION
DISTRICT THREE

SUPERVISING CONSTRUCTION FIELD ENGINEER

DATE: _____

RESIDENT ENGINEER / TECHNICIAN

PREPARED BY: _____
DISTRICT OPERATIONS ENGINEER

START & END DATES
OF CONSTRUCTION:

EXAMINED BY: _____
DISTRICT STUDIES & PLANS ENGINEER

INSPECTORS: _____

DISTRICT CONSTRUCTION ENGINEER

DISTRICT MATERIALS ENGINEER

MODEL: Default
FILE NAME: \\paulhammon.dot.illinois.gov\PWDOT\Documents\IDOT_Office\District 3\Projects\0366166\CADD\0366166-shc-cover.dgn

USER NAME = longneckerjh	DESIGNED -	REVISED -
	DRAWN -	REVISED -
PLOT SCALE = 100,0000' / in.	CHECKED -	REVISED -
PLOT DATE = 1/27/2021	DATE -	REVISED -

**STATE OF ILLINOIS
DEPARTMENT OF TRANSPORTATION**

SCALE: SHEET OF SHEETS STA. TO STA.

F.A. RTE.	SECTION	COUNTY	TOTAL SHEETS	SHEET NO.
VARIOUS	D3 LIGHTING REPAIR 2021-6	DEKALB	3	2
			CONTRACT NO. 66L66	
ILLINOIS				

MODEL: Default
 FILE NAME: \\paulbarnum.dot.ilinois.gov\PWDOT\Documents\DOT_Offices\District 3\Projects\0366166\CADD\0366166-shr-cover.dgn

CODE NO.	ITEM	UNIT	TOTAL QUANTITY	CONSTR. CODE
				STATE FUNDS 100% ROADWAY 0021 RURAL
X7011834	TRAFFIC CONTROL AND PROTECTION, CALL OUT WORK	EACH	2	2
XP000001	JOURNEYMAN ELECTRICIAN	HOUR	200	200
XP000002	APPRENTICE ELECTRICIAN	HOUR	100	100
XP000003	JOURNEYMAN ELECTRICIAN (WEEKLY OVERTIME RATE)	HOUR	20	20
XP000004	JOURNEYMAN ELECTRICIAN (SATURDAY OVERTIME RATE)	HOUR	20	20
XP000005	JOURNEYMAN ELECTRICIAN (SUNDAY AND HOLIDAY OVERTIME RATE)	HOUR	10	10
XP000006	APPRENTICE ELECTRICIAN (WEEKLY OVERTIME RATE)	HOUR	20	20
XP000007	APPRENTICE ELECTRICIAN (SATURDAY OVERTIME RATE)	HOUR	20	20
XP000008	APPRENTICE ELECTRICIAN (SUNDAY AND HOLIDAY OVERTIME RATE)	HOUR	10	10
XP000009	PICK-UP TRUCK	HOUR	200	200
XP000010	BUCKET TRUCK (LENGTH LESS THAN 35 FEET)	HOUR	160	160
XP000011	BUCKET TRUCK (LENGTH 35 TO 65 FEET)	HOUR	40	40

USER NAME = longneckerjh	DESIGNED -	REVISED -
	DRAWN -	REVISED -
PLOT SCALE = 100,0000 ' / in.	CHECKED -	REVISED -
PLOT DATE = 2/4/2021	DATE -	REVISED -

**STATE OF ILLINOIS
 DEPARTMENT OF TRANSPORTATION**

SCALE: SHEET OF SHEETS STA. TO STA.

F.A. RTE.	SECTION	COUNTY	TOTAL SHEETS	SHEET NO.
VARIOUS	D3 LIGHTING REPAIR 2021-6	DEKALB	3	3
			CONTRACT NO. 66L66	
ILLINOIS				