

STATE OF ILLINOIS
DEPARTMENT OF TRANSPORTATION

F.A. RTE.	SECTION	COUNTY	TOTAL SHEETS	SHEET NO.
*	2021-1 WEED SPRAY	BUREAU	8	1
		ILLINOIS	CONTRACT NO. 66L70	

* VARIOUS

INDEX

1	COVER SHEET
2	GENERAL NOTES
3	SUMMARY OF QUANTITIES
4-8	SCHEDULES

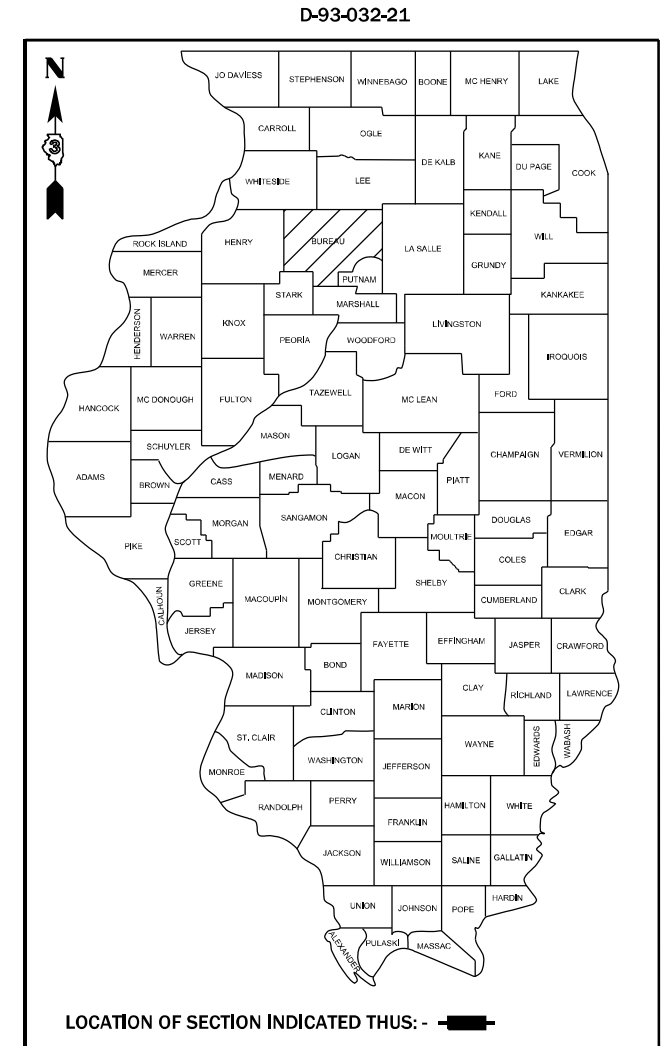
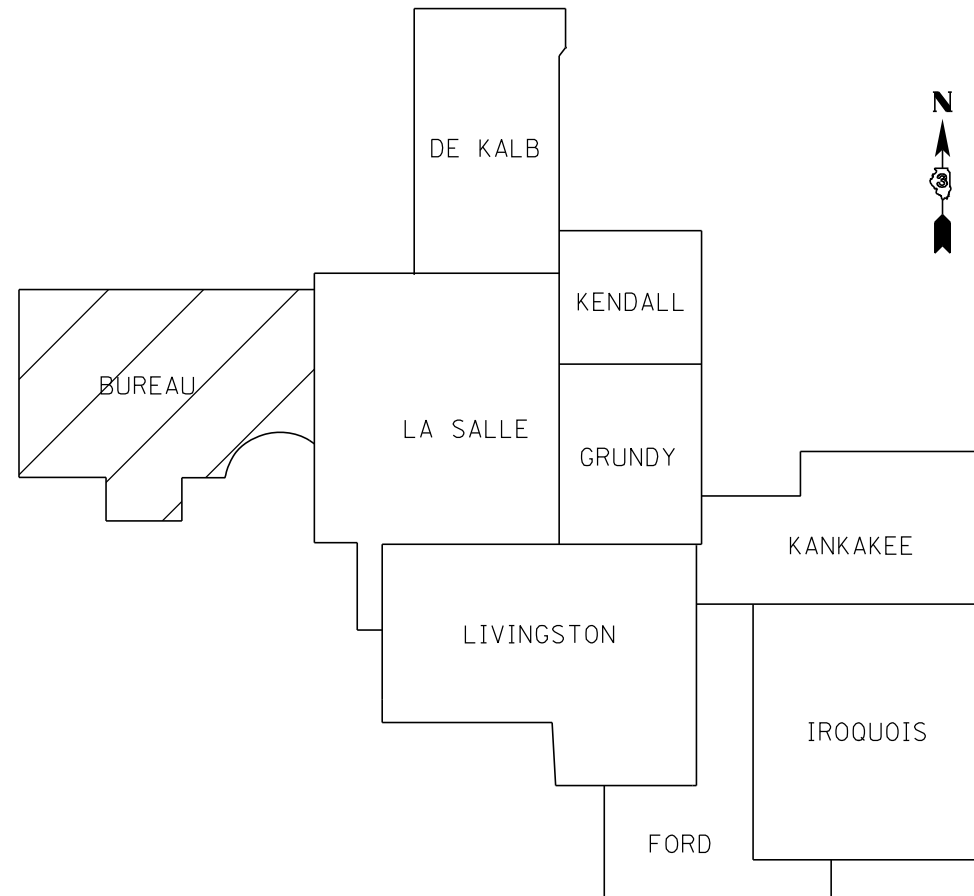
LIST OF ILLINOIS DOT HIGHWAY STANDARDS

000001-08	STANDARD SYMBOLS, ABBREVIATIONS AND PATTERNS
701101-05	OFF-ROAD OPERATIONS, MULTILANE, 15' (4.5 m) TO 24' (600 mm) FROM PAVEMENT EDGE
701106-02	OFF-ROAD OPERATIONS, MULTILANE, MORE THAN 15' (4.5 m) AWAY
701426-09	LANE CLOSURE, MULTILANE INTERMITTENT OR MOVING OPERATION, FOR SPEEDS \geq 45 M ^{PH}
701456-05	PARTIAL EXIT RAMP CLOSURE FREEWAY/EXPRESSWAY
701901-08	TRAFFIC CONTROL DEVICES

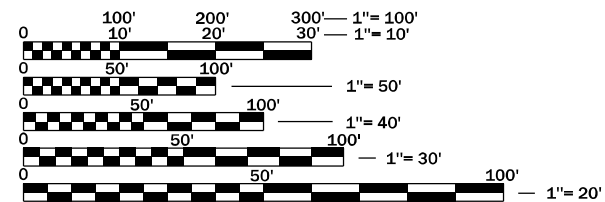
**PROPOSED
HIGHWAY PLANS**

**VARIOUS ROUTES
SECTION 2021-1 WEED SPRAY
WEED SPRAYING
BUREAU COUNTY**

C-93-066-21



LOCATION OF SECTION INDICATED THUS: - -



FULL SIZE PLANS HAVE BEEN PREPARED USING STANDARD ENGINEERING SCALES. REDUCED SIZED PLANS WILL NOT CONFORM TO STANDARD SCALES. IN MAKING MEASUREMENTS ON REDUCED PLANS, THE ABOVE SCALES MAY BE USED.

J.U.L.I.E.
JOINT UTILITY LOCATION INFORMATION FOR EXCAVATION
1-800-892-0123
OR 811

PROJECT ENGINEER: BRAD DUNCAN, PE
UNIT CHIEF: DARCY CARPENTER
DISTRICT 3 NO. (815) 434-6131
CONTRACT NO. 66L70

STATE OF ILLINOIS
DEPARTMENT OF TRANSPORTATION

SUBMITTED February 03, 20 21
David Almond
REGIONAL ENGINEER

March 19, 2021
Scott A. Clark
ENGINEER OF DESIGN AND ENVIRONMENT

March 19, 2021
James J. ...
DIRECTOR OF HIGHWAYS PROJECT IMPLEMENTATION 13

**PRINTED BY THE AUTHORITY
OF THE STATE OF ILLINOIS**

GENERAL NOTES

ANY REFERENCE TO A STANDARD IN THESE PLANS SHALL BE INTERPRETED TO MEAN THE EDITION AS INDICATED BY THE SUBNUMBER SHOWN IN THE LIST OF STANDARDS OR THE COPY INCLUDED IN THESE PLANS.

THE FOLLOWING RATES OF APPLICATION HAVE BEEN USED IN CALCULATING PLAN QUANTITIES:

SELECTIVE WEED SPRAYING			
PRODUCT	APPLICATION RATE		PAY ITEM
MILESTONE	7.00	OUNCES/ACRE	WEED CONTROL SELECTIVE (WOODY PLANTS & BROADLEAF)
PLATEAU	2.00	OUNCES/ACRE	WEED CONTROL SELECTIVE (WOODY PLANTS & BROADLEAF)
VASTLAN	64.00	OUNCES/ACRE	WEED CONTROL SELECTIVE (WOODY PLANTS & BROADLEAF)
NONIONIC SURFACTANT	9.60	OUNCES/ACRE	WEED CONTROL SELECTIVE (WOODY PLANTS & BROADLEAF)
BLUE SPRAY PATTERN INDICATOR	9.60	OUNCES/ACRE	WEED CONTROL SELECTIVE (WOODY PLANTS & BROADLEAF)
WATER	30.00	GALLONS/ACRE MINIMUM	WEED CONTROL SELECTIVE (WOODY PLANTS & BROADLEAF)

NON-SELECTIVE WEED SPRAYING WITH PRE-EMERGENCE RESIDUAL (BARE GROUND)			
PRODUCT	APPLICATION RATE		PAY ITEM
PROMENADE	10.00	OUNCES/ACRE	WEED CONTROL TOTAL VEGETATON
LARAMIE 25DF	4.00	OUNCES/ACRE	WEED CONTROL TOTAL VEGETATON
ESPLANADE	3.50	OUNCES/ACRE	WEED CONTROL TOTAL VEGETATON
AQUANEAT	40.00	OUNCES/ACRE	WEED CONTROL TOTAL VEGETATON
DIQUAT SPC 2L	16.00	OUNCES/ACRE	WEED CONTROL TOTAL VEGETATON
NONIONIC SURFACTANT	9.60	OUNCES/ACRE	WEED CONTROL TOTAL VEGETATON
BLUE SPRAY PATTERN INDICATOR	9.60	OUNCES/ACRE	WEED CONTROL TOTAL VEGETATON
WATER	30.00	GALLONS/ACRE MINIMUM	WEED CONTROL TOTAL VEGETATON

STATE OF ILLINOIS
DEPARTMENT OF TRANSPORTATION
DISTRICT THREE
AS BUILT INFORMATION

STATE OF ILLINOIS
DEPARTMENT OF TRANSPORTATION
DISTRICT THREE

SUPERVISING CONSTRUCTION FIELD ENGINEER

PREPARED BY: _____
DISTRICT STUDIES & PLANS ENGINEER

RESIDENT ENGINEER / TECHNICIAN

DATE: _____

START & END DATES
OF CONSTRUCTION: _____

EXAMINED BY: _____
DISTRICT CONSTRUCTION ENGINEER

INSPECTORS: _____

DISTRICT MATERIALS ENGINEER

DISTRICT OPERATIONS ENGINEER

* VARIOUS

FILE NAME =	USER NAME = pletschr	DESIGNED -	REVISED -
pw:\planroom.dot\illinois.gov\PWIDOT\Documents\DOT	offices\District 3\Projects\I366L70\CADData\I366L70-sh1-cover.dwg	DRAWN -	REVISED -
Default	PLOT SCALE = 100.0000' / in.	CHECKED -	REVISED -
	PLOT DATE = 1/28/2021	DATE -	REVISED -

**STATE OF ILLINOIS
DEPARTMENT OF TRANSPORTATION**

GENERAL NOTES

SCALE: SHEET 2 OF SHEETS STA. TO STA.

F.A. RTE.	SECTION	COUNTY	TOTAL SHEETS	SHEET NO.
*	2021-1 WEED SPRAY	BUREAU	8	2
CONTRACT NO. 66L70				
ILLINOIS		FED. AID PROJECT		

CODE NO.	ITEM	UNIT	TOTAL QUANTITY	CONSTR. CODE	
				100% STATE ROADWAY 0031	RURAL
67100100	MOBILIZATION	L SUM	1	1	
X0322955	WEED CONTROL SELECTIVE (WOODY PLANTS & BROADLEAF)	GALLON	387	387	
X0325896	WEED CONTROL TOTAL VEGETATION	GALLON	9	9	

* VARIOUS

FILE NAME =	USER NAME = pletschr	DESIGNED -	REVISED -	STATE OF ILLINOIS DEPARTMENT OF TRANSPORTATION	SUMMARY OF QUANTITIES			F.A. RTE.	SECTION	COUNTY	TOTAL SHEETS	SHEET NO.
pw:\planroom.dot\illinois.gov\PWIDOT\Documents\DOT	offices\District 3\Projects\I366L70\CADData\I366L70-shl-cover	DRAWN -	REVISED -					*	2021-1 WEED SPRAY	BUREAU	8	3
Default	PLOT SCALE = 100,0000' / in.	CHECKED -	REVISED -		SCALE: SHEET 2 OF SHEETS STA. TO STA.			CONTRACT NO. 66L70				
	PLOT DATE = 1/28/2021	DATE -	REVISED -		ILLINOIS FED. AID PROJECT							

I 80 EB GUARDRAIL-SOUTH SIDE OF ROAD BUREAU COUNTY

MILE POST	LENGTH	WIDTH	AREA		FLUMIAXIN	RIMSULFURON	INDAZIFLAM	GLPHOSATE	DIQUAT	SURFACTANT	MARKER DYE	COMMENTS
I 80	FOOT	FOOT	SQ FT	ACRE	GALLONS	GALLONS	GALLONS	GALLONS	GALLONS	GALLONS	GALLONS	
36.88	370.0	3.0	1110	0.03	0.002	0.001	0.001	0.008	0.003	0.002	0.002	
36.96	60.0	3.0	180	0.00	0.000	0.000	0.000	0.001	0.001	0.000	0.000	
37.11	230.0	3.0	690	0.02	0.001	0.000	0.000	0.005	0.002	0.001	0.001	
37.35	370.0	3.0	1110	0.03	0.002	0.001	0.001	0.008	0.003	0.002	0.002	
37.43	60.0	3.0	180	0.00	0.000	0.000	0.000	0.001	0.001	0.000	0.000	
38.88	340.0	3.0	1020	0.02	0.002	0.001	0.001	0.007	0.003	0.002	0.002	
38.93	115.0	3.0	345	0.01	0.001	0.000	0.000	0.002	0.001	0.001	0.001	
39.30	370.0	3.0	1110	0.03	0.002	0.001	0.001	0.008	0.003	0.002	0.002	
39.39	60.0	3.0	180	0.00	0.000	0.000	0.000	0.001	0.001	0.000	0.000	
39.68	315.0	3.0	945	0.02	0.002	0.001	0.001	0.007	0.003	0.002	0.002	
39.77	60.0	3.0	180	0.00	0.000	0.000	0.000	0.001	0.001	0.000	0.000	
40.64	230.0	3.0	690	0.02	0.001	0.000	0.000	0.005	0.002	0.001	0.001	
41.13	275.0	3.0	825	0.02	0.001	0.001	0.001	0.006	0.002	0.001	0.001	
42.34	245.0	3.0	735	0.02	0.001	0.001	0.000	0.005	0.002	0.001	0.001	
43.84	330.0	3.0	990	0.02	0.002	0.001	0.001	0.007	0.003	0.002	0.002	
43.93	260.0	3.0	780	0.02	0.001	0.001	0.000	0.006	0.002	0.001	0.001	
44.84	250.0	3.0	750	0.02	0.001	0.001	0.000	0.005	0.002	0.001	0.001	
44.90	330.0	3.0	990	0.02	0.002	0.001	0.001	0.007	0.003	0.002	0.002	
46.97	415.0	3.0	1245	0.03	0.002	0.001	0.001	0.009	0.004	0.002	0.002	
47.99	245.0	3.0	735	0.02	0.001	0.001	0.000	0.005	0.002	0.001	0.001	
49.98	245.0	3.0	735	0.02	0.001	0.001	0.000	0.005	0.002	0.001	0.001	
50.28	330.0	3.0	990	0.02	0.002	0.001	0.001	0.007	0.003	0.002	0.002	
50.37	20.0	3.0	60	0.00	0.000	0.000	0.000	0.000	0.000	0.000	0.000	
50.68	265.0	3.0	795	0.02	0.001	0.001	0.000	0.006	0.002	0.001	0.001	
50.78	685.0	3.0	2055	0.05	0.004	0.001	0.001	0.015	0.006	0.004	0.004	
52.12	245.0	3.0	735	0.02	0.001	0.001	0.000	0.005	0.002	0.001	0.001	
54.30	260.0	3.0	780	0.02	0.001	0.001	0.000	0.006	0.002	0.001	0.001	
54.40	415.0	3.0	1245	0.03	0.002	0.001	0.001	0.009	0.004	0.002	0.002	
54.65	240.0	3.0	720	0.02	0.001	0.001	0.000	0.005	0.002	0.001	0.001	
54.96	1410.0	3.0	4230	0.10	0.008	0.003	0.003	0.030	0.012	0.007	0.007	
58.00	470.0	3.0	1410	0.03	0.003	0.001	0.001	0.010	0.004	0.002	0.002	
58.12	750.0	3.0	2250	0.05	0.004	0.002	0.001	0.016	0.006	0.004	0.004	
58.32	2070.0	3.0	6210	0.14	0.011	0.004	0.004	0.045	0.018	0.011	0.011	
59.89	295.0	3.0	885	0.02	0.002	0.001	0.001	0.006	0.003	0.002	0.002	
60.41	325.0	3.0	975	0.02	0.002	0.001	0.001	0.007	0.003	0.002	0.002	
60.48	120.0	3.0	360	0.01	0.001	0.000	0.000	0.003	0.001	0.001	0.001	
60.66	255.0	3.0	765	0.02	0.001	0.001	0.000	0.005	0.002	0.001	0.001	
TOTAL				0.92	0.072	0.029	0.025	0.287	0.115	0.069	0.069	

I 80 EB GUARDRAIL-NORTH SIDE OF ROAD BUREAU COUNTY

MILE POST	LENGTH	WIDTH	AREA		FLUMIAXIN	RIMSULFURON	INDAZIFLAM	GLPHOSATE	DIQUAT	SURFACTANT	MARKER DYE	COMMENTS
I 80	FOOT	FOOT	SQ FT	ACRE	GALLONS	GALLONS	GALLONS	GALLONS	GALLONS	GALLONS	GALLONS	
36.86	470.0	3.0	1410	0.03	0.003	0.001	0.001	0.010	0.004	0.002	0.002	
36.97	60.0	3.0	180	0.00	0.000	0.000	0.000	0.001	0.001	0.000	0.000	
37.33	470.0	3.0	1410	0.03	0.003	0.001	0.001	0.010	0.004	0.002	0.002	
37.43	60.0	3.0	180	0.00	0.000	0.000	0.000	0.001	0.001	0.000	0.000	
39.27	465.0	3.0	1395	0.03	0.003	0.001	0.001	0.010	0.004	0.002	0.002	
39.38	60.0	3.0	180	0.00	0.000	0.000	0.000	0.001	0.001	0.000	0.000	
39.67	365.0	3.0	1095	0.03	0.002	0.001	0.001	0.008	0.003	0.002	0.002	
39.77	60.0	3.0	180	0.00	0.000	0.000	0.000	0.001	0.001	0.000	0.000	
43.84	360.0	3.0	1080	0.02	0.002	0.001	0.001	0.008	0.003	0.002	0.002	
43.93	220.0	3.0	660	0.02	0.001	0.000	0.000	0.005	0.002	0.001	0.001	
44.01	150.0	3.0	450	0.01	0.001	0.000	0.000	0.003	0.001	0.001	0.001	
50.27	355.0	3.0	1065	0.02	0.002	0.001	0.001	0.008	0.003	0.002	0.002	
50.37	20.0	3.0	60	0.00	0.000	0.000	0.000	0.000	0.000	0.000	0.000	
50.66	345.0	3.0	1035	0.02	0.002	0.001	0.001	0.007	0.003	0.002	0.002	
50.77	60.0	3.0	180	0.00	0.000	0.000	0.000	0.001	0.001	0.000	0.000	
54.28	385.0	3.0	1155	0.03	0.002	0.001	0.001	0.008	0.003	0.002	0.002	
58.01	425.0	3.0	1275	0.03	0.002	0.001	0.001	0.009	0.004	0.002	0.002	
58.12	60.0	3.0	180	0.00	0.000	0.000	0.000	0.001	0.001	0.000	0.000	
58.18	425.0	3.0	1275	0.03	0.002	0.001	0.001	0.009	0.004	0.002	0.002	
58.32	60.0	3.0	180	0.00	0.000	0.000	0.000	0.001	0.001	0.000	0.000	
TOTAL				0.34	0.026	0.011	0.009	0.105	0.042	0.025	0.025	

* VARIOUS

MODEL: Default
 FILE NAME: p:\pub\mbaronm.dta\illinois.gov\PIWDOT\Documents\IDOT_Offices\District_3\Projects\0366L70\CADD\0366L70\ch-sch-schedule.dgn

USER NAME = pletschr	DESIGNED - _____	REVISED - _____
	DRAWN - _____	REVISED - _____
PLOT SCALE = 100,0000' / in.	CHECKED - _____	REVISED - _____
PLOT DATE = 1/28/2021	DATE - _____	REVISED - _____

**STATE OF ILLINOIS
DEPARTMENT OF TRANSPORTATION**

SCHEDULES

SCALE: _____ SHEET ____ OF ____ SHEETS STA. _____ TO STA. _____

F.A. RTE.	SECTION	COUNTY	TOTAL SHEETS	SHEET NO.
-	2021-1 WEED SPRAY	BUREAU	8	5
CONTRACT NO. 66L70				
ILLINOIS FED. AID PROJECT				

I 80 WB GUARDRAIL-SOUTH SIDE OF ROAD BUREAU COUNTY												
MILE POST	LENGTH	WIDTH	AREA		FLUMIAXIN	RIMSULFURON	INDAZIFLAM	GLPHOSATE	DIQUAT	SURFACTANT	MARKER DYE	COMMENTS
I 80	FOOT	FOOT	SQ FT	ACRE	GALLONS	GALLONS	GALLONS	GALLONS	GALLONS	GALLONS	GALLONS	
36.94	60.0	3.0	180	0.00	0.000	0.000	0.000	0.001	0.001	0.000	0.000	
36.96	470.0	3.0	1410	0.03	0.003	0.001	0.001	0.010	0.004	0.002	0.002	
37.40	60.0	3.0	180	0.00	0.000	0.000	0.000	0.001	0.001	0.000	0.000	
37.43	470.0	3.0	1410	0.03	0.003	0.001	0.001	0.010	0.004	0.002	0.002	
39.34	60.0	3.0	180	0.00	0.000	0.000	0.000	0.001	0.001	0.000	0.000	
39.37	465.0	3.0	1395	0.03	0.003	0.001	0.001	0.010	0.004	0.002	0.002	
39.72	60.0	3.0	180	0.00	0.000	0.000	0.000	0.001	0.001	0.000	0.000	
39.76	365.0	3.0	1095	0.03	0.002	0.001	0.001	0.008	0.003	0.002	0.002	
43.88	125.0	3.0	375	0.01	0.001	0.000	0.000	0.003	0.001	0.001	0.001	
43.93	155.0	3.0	465	0.01	0.001	0.000	0.000	0.003	0.001	0.001	0.001	
43.99	280.0	3.0	840	0.02	0.002	0.001	0.001	0.006	0.002	0.001	0.001	
50.34	20.0	3.0	60	0.00	0.000	0.000	0.000	0.000	0.000	0.000	0.000	
50.37	355.0	3.0	1065	0.02	0.002	0.001	0.001	0.008	0.003	0.002	0.002	
50.71	60.0	3.0	180	0.00	0.000	0.000	0.000	0.001	0.001	0.000	0.000	
50.77	345.0	3.0	1035	0.02	0.002	0.001	0.001	0.007	0.003	0.002	0.002	
54.40	390.0	3.0	1170	0.03	0.002	0.001	0.001	0.008	0.003	0.002	0.002	
58.09	60.0	3.0	180	0.00	0.000	0.000	0.000	0.001	0.001	0.000	0.000	
58.13	430.0	3.0	1290	0.03	0.002	0.001	0.001	0.009	0.004	0.002	0.002	
58.27	60.0	3.0	180	0.00	0.000	0.000	0.000	0.001	0.001	0.000	0.000	
58.34	430.0	3.0	1290	0.03	0.002	0.001	0.001	0.009	0.004	0.002	0.002	
TOTAL				0.33	0.025	0.010	0.009	0.102	0.041	0.024	0.024	

I 80 WB GUARDRAIL-NORTH SIDE OF ROAD BUREAU COUNTY												
MILE POST	LENGTH	WIDTH	AREA		FLUMIAXIN	RIMSULFURON	INDAZIFLAM	GLPHOSATE	DIQUAT	SURFACTANT	MARKER DYE	COMMENTS
I 80	FOOT	FOOT	SQ FT	ACRE	GALLONS	GALLONS	GALLONS	GALLONS	GALLONS	GALLONS	GALLONS	
36.93	60.0	3.0	180	0.00	0.000	0.000	0.000	0.001	0.001	0.000	0.000	
36.96	370.0	3.0	1110	0.03	0.002	0.001	0.001	0.008	0.003	0.002	0.002	
37.16	235.0	3.0	705	0.02	0.001	0.001	0.000	0.005	0.002	0.001	0.001	
37.40	60.0	3.0	180	0.00	0.000	0.000	0.000	0.001	0.001	0.000	0.000	
37.43	370.0	3.0	1110	0.03	0.002	0.001	0.001	0.008	0.003	0.002	0.002	
38.93	235.0	3.0	705	0.02	0.001	0.001	0.000	0.005	0.002	0.001	0.001	
39.33	60.0	3.0	180	0.00	0.000	0.000	0.000	0.001	0.001	0.000	0.000	
39.37	365.0	3.0	1095	0.03	0.002	0.001	0.001	0.008	0.003	0.002	0.002	
39.72	60.0	3.0	180	0.00	0.000	0.000	0.000	0.001	0.001	0.000	0.000	
39.76	315.0	3.0	945	0.02	0.002	0.001	0.001	0.007	0.003	0.002	0.002	
40.68	230.0	3.0	690	0.02	0.001	0.000	0.000	0.005	0.002	0.001	0.001	
41.17	305.0	3.0	915	0.02	0.002	0.001	0.001	0.007	0.003	0.002	0.002	
42.39	245.0	3.0	735	0.02	0.001	0.001	0.000	0.005	0.002	0.001	0.001	
43.89	60.0	3.0	180	0.00	0.000	0.000	0.000	0.001	0.001	0.000	0.000	
43.92	125.0	3.0	375	0.01	0.001	0.000	0.000	0.003	0.001	0.001	0.001	
44.00	300.0	3.0	900	0.02	0.002	0.001	0.001	0.006	0.003	0.002	0.002	
44.89	60.0	3.0	180	0.00	0.000	0.000	0.000	0.001	0.001	0.000	0.000	
44.90	300.0	3.0	900	0.02	0.002	0.001	0.001	0.006	0.003	0.002	0.002	
44.97	230.0	3.0	690	0.02	0.001	0.000	0.000	0.005	0.002	0.001	0.001	
46.96	440.0	3.0	1320	0.03	0.002	0.001	0.001	0.009	0.004	0.002	0.002	
48.04	220.0	3.0	660	0.02	0.001	0.000	0.000	0.005	0.002	0.001	0.001	
50.03	235.0	3.0	705	0.02	0.001	0.001	0.000	0.005	0.002	0.001	0.001	
50.34	20.0	3.0	60	0.00	0.000	0.000	0.000	0.000	0.000	0.000	0.000	
50.37	320.0	3.0	960	0.02	0.002	0.001	0.001	0.007	0.003	0.002	0.002	
50.69	150.0	3.0	450	0.01	0.001	0.000	0.000	0.003	0.001	0.001	0.001	
50.76	270.0	3.0	810	0.02	0.001	0.001	0.001	0.006	0.002	0.001	0.001	
51.80	175.0	3.0	525	0.01	0.001	0.000	0.000	0.004	0.002	0.001	0.001	
52.16	230.0	3.0	690	0.02	0.001	0.000	0.000	0.005	0.002	0.001	0.001	
54.30	205.0	3.0	615	0.01	0.001	0.000	0.000	0.004	0.002	0.001	0.001	
54.40	475.0	3.0	1425	0.03	0.003	0.001	0.001	0.010	0.004	0.002	0.002	
54.63	230.0	3.0	690	0.02	0.001	0.000	0.000	0.005	0.002	0.001	0.001	
54.98	1740.0	3.0	5220	0.12	0.009	0.004	0.003	0.038	0.015	0.009	0.009	
TOTAL				0.60	0.047	0.019	0.016	0.187	0.075	0.045	0.045	

MODEL: Default
 FILE NAME: p:\ilr\hwy\p\w\DOT\Documents\DOT_Offices\District_3\Projects\033667_70\CAD\DATA\03667_70\ch-schedule.dgn

* VARIOUS

USER NAME = pletschr	DESIGNED - _____	REVISED - _____
	DRAWN - _____	REVISED - _____
PLOT SCALE = 100,0000 ' / in.	CHECKED - _____	REVISED - _____
PLOT DATE = 1/28/2021	DATE - _____	REVISED - _____

**STATE OF ILLINOIS
DEPARTMENT OF TRANSPORTATION**

SCHEDULES

SCALE: _____ SHEET ____ OF ____ SHEETS STA. _____ TO STA. _____

F.A. RTE.	SECTION	COUNTY	TOTAL SHEETS	SHEET NO.
-	2021-1 WEED SPRAY	BUREAU	8	6
CONTRACT NO. 66L70				
		ILLINOIS FED. AID PROJECT		

I 80 UPPER EMBANKMENTS BUREAU COUNTY												
MILE POST	LENGTH	WIDTH	AREA		FLUMIAXIN	RIMSULFURON	INDAZIFLAM	GLPHOSATE	DIQUAT	SURFACTANT	MARKER DYE	COMMENTS
I 80	FOOT	FOOT	SQ FT	ACRE	GALLONS	GALLONS	GALLONS	GALLONS	GALLONS	GALLONS	GALLONS	
60.5	N/A	N/A	3650	0.08	0.007	0.003	0.002	0.026	0.010	0.006	0.006	Bridge at CR 2400E
54.7	N/A	N/A	5425	0.12	0.010	0.004	0.003	0.039	0.016	0.009	0.009	Bridge at Backbone Road
52.2	N/A	N/A	4050	0.09	0.007	0.003	0.003	0.029	0.012	0.007	0.007	Bridge at CR 1600E
50.0	N/A	N/A	3820	0.09	0.007	0.003	0.002	0.027	0.011	0.007	0.007	Bridge at Co Hwy 8/S. Wyanet Walnut Road
48.0	N/A	N/A	3540	0.08	0.006	0.003	0.002	0.025	0.010	0.006	0.006	Bridge at CR 1200E
45.0	N/A	N/A	3150	0.07	0.006	0.002	0.002	0.023	0.009	0.005	0.005	Rail Road Bridge
44.9	N/A	N/A	5560	0.13	0.010	0.004	0.003	0.040	0.016	0.010	0.010	Bridge at Co Hwy 40/CR 900E
42.4	N/A	N/A	3960	0.09	0.007	0.003	0.002	0.028	0.011	0.007	0.007	Bridge at 645 E St.
40.7	N/A	N/A	3340	0.08	0.006	0.002	0.002	0.024	0.010	0.006	0.006	Bridge at 470 E St.
38.9	N/A	N/A	2900	0.07	0.005	0.002	0.002	0.021	0.008	0.005	0.005	Bridge at CR 300E, North embankment may be rock
37.2	N/A	N/A	3970	0.09	0.007	0.003	0.002	0.029	0.011	0.007	0.007	Bridge at Co Hwy 10, North embankment may be rock
TOTAL				1.00	0.078	0.031	0.027	0.312	0.125	0.075	0.075	

I 80 LOWER EMBANKMENTS BUREAU COUNTY												
MILE POST	LENGTH	WIDTH	AREA		FLUMIAXIN	RIMSULFURON	INDAZIFLAM	GLPHOSATE	DIQUAT	SURFACTANT	MARKER DYE	COMMENTS
I 80	FOOT	FOOT	SQ FT	ACRE	GALLONS	GALLONS	GALLONS	GALLONS	GALLONS	GALLONS	GALLONS	
36.95	N/A	N/A	8150	0.19	0.015	0.006	0.005	0.059	0.023	0.014	0.014	Bridge over King Creek
37.43	N/A	N/A	5700	0.13	0.010	0.004	0.004	0.041	0.016	0.010	0.010	Bridge over tributary to King Creek
39.37	N/A	N/A	7300	0.17	0.013	0.005	0.005	0.052	0.021	0.013	0.013	Bridge over Lawson Creek
39.76	N/A	N/A	16500	0.38	0.030	0.012	0.010	0.119	0.047	0.028	0.028	Bridge over Cole Creek
43.92	N/A	N/A	15400	0.35	0.028	0.011	0.010	0.111	0.044	0.027	0.027	Bridge over Devil's Slough Ditch
43.99	N/A	N/A	32000	0.74	0.057	0.023	0.020	0.230	0.092	0.055	0.055	Bridge over Hennepin Canal
50.36	N/A	N/A	15500	0.36	0.028	0.011	0.010	0.111	0.045	0.027	0.027	Bridge over Maple Grove Creek
50.75	N/A	N/A	34000	0.78	0.061	0.024	0.021	0.244	0.098	0.059	0.059	Bridge over West Bureau Creek
54.38	N/A	N/A	35500	0.82	0.064	0.026	0.022	0.255	0.102	0.061	0.061	Bridge over Big Bureau Creek
58.10	N/A	N/A	37000	0.85	0.066	0.027	0.023	0.266	0.106	0.064	0.064	Bridge over Railroad Tracks
58.29	N/A	N/A	16500	0.38	0.030	0.012	0.010	0.119	0.047	0.028	0.028	Bridge over IL Rt 34
TOTAL				5.14	0.401	0.161	0.141	1.606	0.642	0.385	0.385	

MODEL: Default
 FILE NAME: p:\pub\lhamon.dwg
 PROJECT: I35667-21-CADD\DATA\366L70-CH-SCHEM.DWG
 PROJECT DIR: C:\Users\dlhamon\Documents\DOT Office\366L70-CH-SCHEM.DWG

* VARIOUS

USER NAME = pletschr	DESIGNED - _____	REVISED - _____	STATE OF ILLINOIS DEPARTMENT OF TRANSPORTATION	SCHEDULES			F.A. RTE.	SECTION	COUNTY	TOTAL SHEETS	SHEET NO.
DRAWN - _____	REVISED - _____	~					2021-1 WEED SPRAY	BUREAU	8	7	
PLOT SCALE = 100,0000' / in.	CHECKED - _____	REVISED - _____		SCALE: _____ SHEET ____ OF ____ SHEETS STA. _____ TO STA. _____			CONTRACT NO. 66L70				
PLOT DATE = 1/28/2021	DATE - _____	REVISED - _____		ILLINOIS FED. AID PROJECT							

I 80 MEDIAN TURN AROUNDS BUREAU COUNTY												
MILE POST	LENGTH	WIDTH	AREA		FLUMIAXIN	RIMSULFURON	INDAZIFLAM	GLPHOSATE	DIQUAT	SURFACTANT	MARKER DYE	COMMENTS
			SQ FT	ACRE								
I 80	FOOT	FOOT										
35.9	N/A	N/A	3090	0.07	0.006	0.002	0.002	0.022	0.009	0.005	0.005	
38.6	N/A	N/A	2400	0.06	0.004	0.002	0.002	0.017	0.007	0.004	0.004	
41.5	N/A	N/A	2540	0.06	0.005	0.002	0.002	0.018	0.007	0.004	0.004	
43.6	N/A	N/A	23600	0.54	0.042	0.017	0.015	0.170	0.068	0.041	0.041	
44.3	N/A	N/A	24000	0.55	0.043	0.017	0.015	0.172	0.069	0.041	0.041	
49.1	N/A	N/A	2600	0.06	0.005	0.002	0.002	0.019	0.007	0.004	0.004	
52.9	N/A	N/A	2720	0.06	0.005	0.002	0.002	0.020	0.008	0.005	0.005	
55.8	N/A	N/A	2570	0.06	0.005	0.002	0.002	0.018	0.007	0.004	0.004	
57.5	N/A	N/A	26800	0.62	0.048	0.019	0.017	0.193	0.077	0.046	0.046	
60.2	N/A	N/A	23800	0.55	0.043	0.017	0.015	0.171	0.068	0.041	0.041	
TOTAL				2.62	0.205	0.082	0.072	0.820	0.328	0.197	0.197	

I 80 VARIOUS STRUCTURES BUREAU COUNTY												
MILE POST	LENGTH	WIDTH	AREA		FLUMIAXIN	RIMSULFURON	INDAZIFLAM	GLPHOSATE	DIQUAT	SURFACTANT	MARKER DYE	COMMENTS
			SQ FT	ACRE								
I 80	FOOT	FOOT										
37.16	N/A	N/A	930	0.02	0.002	0.001	0.001	0.007	0.003	0.002	0.002	Bridge pier and crash barrels in center median - CR 120E
38.93	N/A	N/A	940	0.02	0.002	0.001	0.001	0.007	0.003	0.002	0.002	Bridge pier and crash barrels in center median - CR 300E
40.69	N/A	N/A	835	0.02	0.001	0.001	0.001	0.006	0.002	0.001	0.001	Bridge pier and crash barrels in center median - CR 470E
42.39	N/A	N/A	620	0.01	0.001	0.000	0.000	0.004	0.002	0.001	0.001	Bridge pier and crash barrels in center median - CR 645E
44.89	N/A	N/A	735	0.02	0.001	0.001	0.000	0.005	0.002	0.001	0.001	Bridge pier and crash barrels in center median - IL 40
44.95	N/A	N/A	920	0.02	0.002	0.001	0.001	0.007	0.003	0.002	0.002	Railroad bridge pier and crash barrels in center median
48.03	N/A	N/A	970	0.02	0.002	0.001	0.001	0.007	0.003	0.002	0.002	Bridge pier and crash barrels in center median - CR 1200E
50.02	N/A	N/A	720	0.02	0.001	0.001	0.000	0.005	0.002	0.001	0.001	Bridge pier and crash barrels in center median - Co Hwy 8
52.17	N/A	N/A	1070	0.02	0.002	0.001	0.001	0.008	0.003	0.002	0.002	Bridge pier and crash barrels in center median - CR 1600E
54.69	N/A	N/A	1360	0.03	0.002	0.001	0.001	0.010	0.004	0.002	0.002	Bridge pier and crash barrels in center median - Backbone Rd
56.47	N/A	N/A	3150	0.07	0.006	0.002	0.002	0.023	0.009	0.005	0.005	Bridge pier and crash barrels in center median - IL 26
59.94	N/A	N/A	710	0.02	0.001	0.001	0.000	0.005	0.002	0.001	0.001	Highway sign with crash barrels in center median
60.47	N/A	N/A	900	0.02	0.002	0.001	0.001	0.006	0.003	0.002	0.002	Bridge pier and crash barrels in center median - Co Hwy 27
60.70	N/A	N/A	890	0.02	0.002	0.001	0.001	0.006	0.003	0.002	0.002	Highway sign with crash barrels in center median
TOTAL				0.34	0.026	0.011	0.009	0.106	0.042	0.025	0.025	

* VARIOUS

MODEL: Default
FILE NAME: p:\planning\p0667\p0667\PROJECTS\03667\03667\DATA\03667_70-shc-schedule.dgn

USER NAME = pletschr	DESIGNED - _____	REVISED - _____
	DRAWN - _____	REVISED - _____
PLOT SCALE = 100,0000' / in.	CHECKED - _____	REVISED - _____
PLOT DATE = 1/28/2021	DATE - _____	REVISED - _____

**STATE OF ILLINOIS
DEPARTMENT OF TRANSPORTATION**

SCHEDULES

SCALE: _____ SHEET ____ OF ____ SHEETS STA. _____ TO STA. _____

F.A. RTE.	SECTION	COUNTY	TOTAL SHEETS	SHEET NO.
-	2021-1 WEED SPRAY	BUREAU	8	8
			CONTRACT NO. 66L70	
			ILLINOIS FED. AID PROJECT	