

STATE OF ILLINOIS
DEPARTMENT OF TRANSPORTATION

F.A. RTE.	SECTION	COUNTY	TOTAL SHEETS	SHEET NO.
-	CM21-5016	CHAMPAIGN	21	1
* F.A.S. 1512 & F.A.P. 836		ILLINOIS	CONTRACT NO. 70F13	

FOR INDEX OF SHEETS, SEE SHEET NO. 2
FOR SUMMARY OF QUANTITIES, SEE SHEET NO. 3

PROPOSED HIGHWAY PLANS

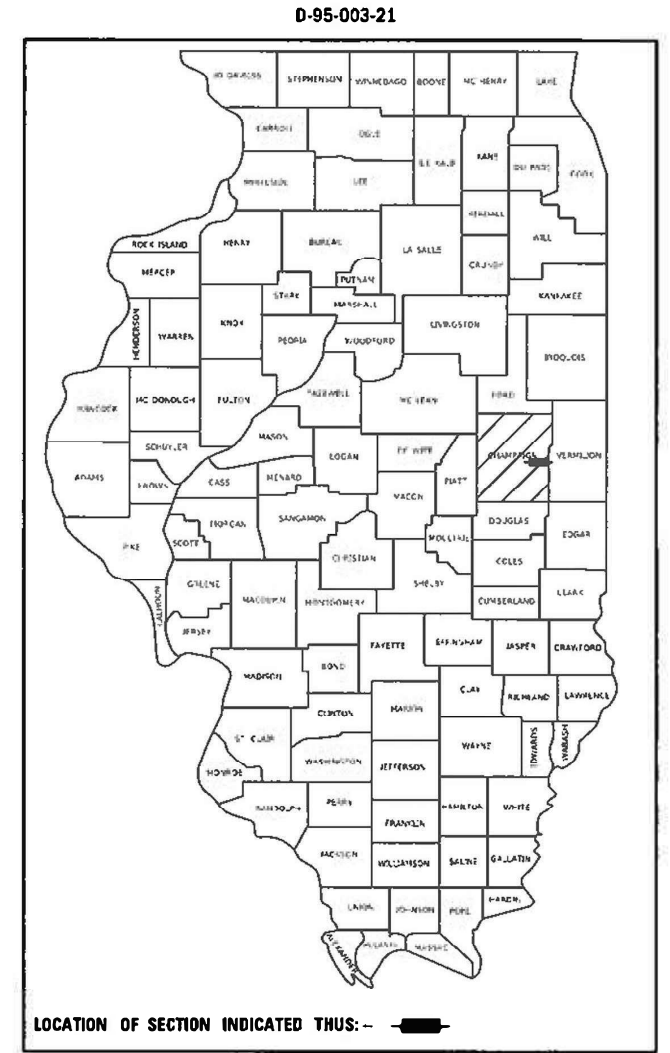
FAS ROUTE 1512/FAP ROUTE 836 (US 150/IL 49)
SECTION CM21-5016
PARTIAL WIDTH RESURFACING
CHAMPAIGN COUNTY

C-95-019-21

US 150 N ELM ST TO N 3RD IN ST JOSEPH &
ILL 49 AT US 150 IN OGDEN

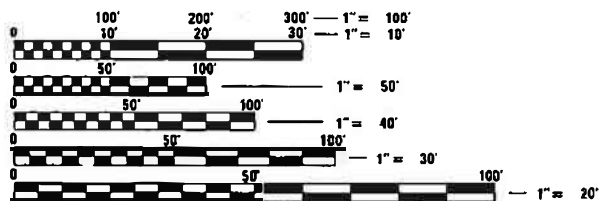
TRAFFIC DATA				
	LEG "A"	LEG "B"	LEG "C"	
2020 ADT	= 5700	3200	3900	
P.U. & P.C.%	= 92.7	90.5	90.5	
SUP%	= 4.7	2.5	2.5	
MUP%	= 2.6	7.0	7.0	
Truck Rte. Class	=	CLASS II		
N.H.S. Route	= No	No	No	

LEG "A" is US 150 at St. Joseph between Elm to Main St.
LEG "B" is ILL 47 at Ogden just S of US 150/ILL 47 intersection
LEG "C" is ILL 47 at Ogden just N of US 150/ILL 47 intersection



DESIGN DESIGNATION
MAJOR COLLECTOR (US 150)
MINOR ARTERIAL (ILL 49)

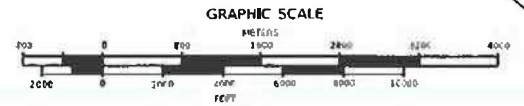
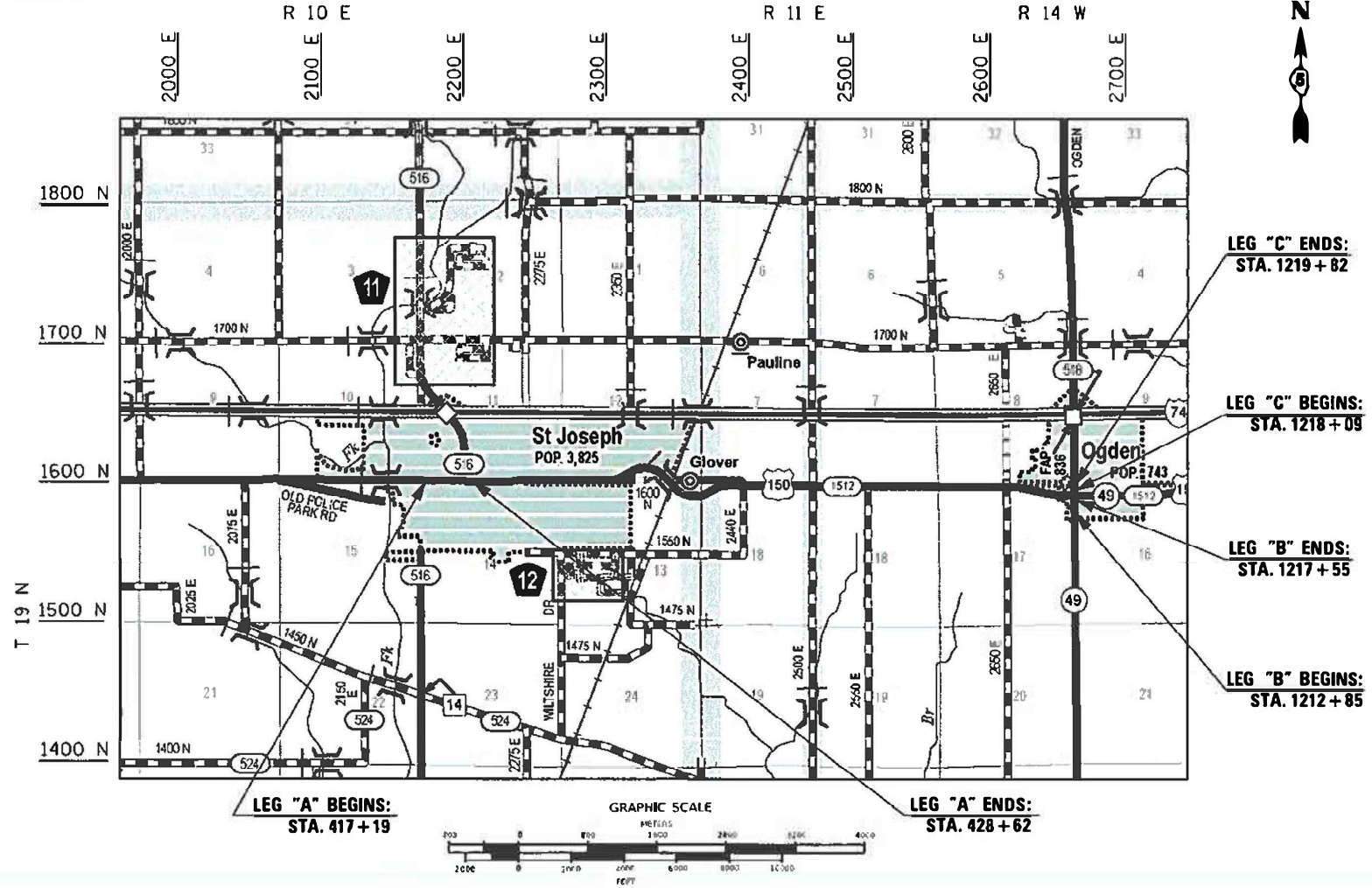
TOWNSHIP
ST JOSEPH
OGDEN



FULL SIZE PLANS HAVE BEEN PREPARED USING STANDARD ENGINEERING SCALES. REDUCED SIZED PLANS WILL NOT CONFORM TO STANDARD SCALES. IN MAKING MEASUREMENTS ON REDUCED PLANS, THE ABOVE SCALES MAY BE USED.

J.U.L.I.E.
JOINT UTILITY LOCATION INFORMATION FOR EXCAVATORS
1-800-892-0123
OR 811

PROJECT ENGINEER: JASON STULTS, P.E.
PROJECT MANAGER: JOSEPH GRAZIANO, P.E.
DESIGNER: XINYU SUN, P.E.
PHONE NUMBER: (217)465-4181
CONTRACT NO. 70F13



GROSS LENGTH = 1840.0 FT. = 0.348 MILE
NET LENGTH = 1786.0 FT. = 0.338 MILE

STATE OF ILLINOIS
DEPARTMENT OF TRANSPORTATION

SUBMITTED 1/20 2021
Kensil A. Barnett
REGIONAL ENGINEER

March 19, 2021
Scott A. Elk
ENGINEER OF DESIGN AND ENVIRONMENT

March 19, 2021
James J. ...
DIRECTOR OF HIGHWAYS PROJECT IMPLEMENTATION

PRINTED BY THE AUTHORITY
OF THE STATE OF ILLINOIS

INDEX OF SHEETS

SHEET NO.	DESCRIPTION
1	COVER SHEET
2	INDEX OF SHEETS
2	HIGHWAY STANDARDS
2	GENERAL NOTES
3-4	SUMMARY OF QUANTITIES
5-10	TYPICAL CROSS SECTIONS
11-12	SCHEDULE OF QUANTITIES
13-17	PLAN SHEETS
18-20	WIDTH RESTRICTION SIGNING
21	SURVEY MARKERS TYPE 1 & 2 (SPFCIAI) DFTAIL

LIST OF HIGHWAY STANDARDS

STANDARD NO.	DESCRIPTION
000001-08	STANDARDS SYMBOLS, ABBREVIATIONS, & PATTERNS
001006	DECIMAL OF AN INCH AND OF A FOOT
701001-02	OFF ROAD OPERATIONS, 2L, 2W, MORE THAN 15' AWAY
701006-05	OFF ROAD OPERATIONS, 2L, 2W, 15' TO 24" FROM PAVEMENT EDGE
701501-06	URBAN LANE CLOSURE, 2L, 2W, UNDIVIDED
701502-09	URBAN LANE CLOSURE, 2L, 2W, WITH BIDIRECTIONAL LEFT TURN LANE
701901-08	TRAFFIC CONTROL DEVICES
781001-04	TYPICAL APPLICATIONS RAISED REFLECTIVE PAVEMENT MARKERS

GENERAL NOTES

G.N. -100A
ELECTRONIC FILES AND/OR ELECTRONIC SURVEY INFORMATION INCLUDING CADD FILES WILL NOT BE AVAILABLE TO THE CONTRACTOR.

G.N. -406H

MIXTURE REQUIREMENTS

THE FOLLOWING MIXTURE REQUIREMENTS ARE APPLICABLE FOR THIS PROJECT:

Location	IL 49 & US 150	IL 49 & US 150	IL 49
Mixture Use	Surface	Binder	Binder FG (Typical 5 & 6)
AC/PG	SBS PG 70-22	SBS PG 70-22	SBS PG 70-22
Design Air Voids	4.0% @ Ndes=70	4.0% @ Ndes=70	4.0% @ Ndes=70
Mix Comp(Gradation)	IL 9.5	IL 19.0	IL 9.5 FG
Friction Aggregate	Mix D	N.A.	N.A.
Mixture Weight	112	112	112
Quality Management Program	QC/QA	QC/QA	QC/QA
Sublot Size	N.A.	N.A.	N.A.

G.N.-440L
THE HMA BEING MILLED FROM THIS PROJECT CONTAINS STEEL SLAG COARSE AGGREGATE.

G.N. - 703A
SHORT TERM PAVEMENT MARKING SHALL BE APPLIED TO THE PAVEMENT AFTER ANY OF THE FOLLOWING: COLD MILLING AND/OR PLACING BITUMINOUS MATERIALS (TACK COAT), LEVELING BINDER (MACHINE METHOD), BINDER AND SURFACE COURSES. SHORT TERM PAVEMENT MARKING PLACED ON THE SURFACE SHALL COINCIDE WITH THE FINAL PAVEMENT STRIPING. SHORT TERM PAVEMENT MARKING PLACED PRIOR TO THE SURFACE SHALL COINCIDE WITH THE EXISTING PAVEMENT MARKINGS. USE 4 FEET PER 40 FEET (OR 10% PER STATION).

G.N.-780 (SPL)
PAVEMENT MARKING FOR THIS PROJECT IS TO BE PERFORMED BY OTHERS, FIELD PERSONNEL SHALL NOTIFY GARY SIMS, DISTRICT 5 TRAFFIC OPERATIONS ENGINEER AT (217) 465-4181 WHEN THE PROJECT IS COMPLETE AND READY FOR PAVEMENT MARKINGS.

G.N.-781
THE FINAL PAVEMENT MARKINGS SHALL BE IN PLACE PRIOR TO PLACING THE RAISED REFLECTIVE PAVEMENT MARKERS.

COMMITMENTS

THERE ARE NO COMMITMENTS FOR THIS PROJECT

**STATE OF ILLINOIS
DEPARTMENT OF TRANSPORTATION**

**INDEX OF SHEETS, HIGHWAY STANDARDS
COMMITMENTS, GENERAL NOTES**

SCALE: SHEET 1 OF 1 SHEETS STA. TO STA.

F.A. RTE.	SECTION	COUNTY	TOTAL SHEETS	SHEET NO.
~	CM21-5016	CHAMPAIGN	21	2
* F.A.S. 1512 & F.A.P 836 CONTRACT NO. 70F13				
ILLINOIS FED. AID PROJECT				

SUMMARY OF QUANTITIES

LOCATION OF WORK:

FAS 1512 (US 150)

FAP 836 (ILL 49)

URBAN

RURAL

MAJOR COLLECTOR

MINOR ARTERIAL

STA. 417+19 TO STA. 428+62 STA. 1212+85 TO STA. 1219+82

CHAMPAIGN COUNTY

CHAMPAIGN COUNTY

FUNDING BREAKOUT:

100% STATE

100% STATE

CONSTRUCTION TYPE CODE:

0005

0005

CODE NO.	ITEM	UNIT	TOTAL QUANTITY	QUANTITY	QUANTITY
40600290	BITUMINOUS MATERIALS (TACK COAT)	POUND	2256.0	1260.0	996.0
40600990	TEMPORARY RAMP	SQ YD	184.0	64.0	120.0
40603218	POLYMERIZED HOT-MIX ASPHALT BINDER COURSE, 1L-9.5FG, N70	TON	20.0	0.0	20.0
40603235	POLYMERIZED HOT-MIX ASPHALT BINDER COURSE, 1L-19.0, N70	TON	364.0	236.0	128.0
40604162	POLYMERIZED HOT-MIX ASPHALT SURFACE COURSE, 1L-9.5, MIX "D", N70	TON	288.0	157.0	131.0
44000158	HOT-MIX ASPHALT SURFACE REMOVAL 2 1/4"	SQ YD	462.0	0.0	462.0
44000163	HOT-MIX ASPHALT SURFACE REMOVAL 3 1/2"	SQ YD	1867.0	1867.0	0.0
44000164	HOT-MIX ASPHALT SURFACE REMOVAL 3 3/4"	SQ YD	1013.0	0.0	1013.0
67100100	MOBILIZATION	L SUM	1.0	0.5	0.5
70102620	TRAFFIC CONTROL AND PROTECTION, STANDARD 701501	L SUM	1.0	0.5	0.5
70102622	TRAFFIC CONTROL AND PROTECTION, STANDARD 701502	L SUM	1.0	0.5	0.5
70300100	SHORT TERM PAVEMENT MARKING	FOOT	362.0	192.0	170.0
70300150	SHORT TERM MAVEMENT MARKING REMOVAL	SQ FT	121.0	64.0	57.0
* 78100100	RAISED REFLECTIVE PAVEMENT MARKER	EACH	37.0	14.0	23.0

* DENOTES SPECIALTY ITEM

MODEL: \\MODEL\MHFE
FILE NAME: \\p14\m\com\dot\illinc\gov\PIWDOT\Documents\DOT_Offices\District 5\Projects\0570F13\CADD\BIB\CAD\Faces\0570F13.rpt-500.dgn

USER NAME = slrx	DESIGNED -	REVISED -
	DRAWN -	REVISED -
PLOT SCALE = 40,0000 * / in.	CHECKED -	REVISED -
PLOT DATE = 1/20/2021	DATE -	REVISED -

**STATE OF ILLINOIS
DEPARTMENT OF TRANSPORTATION**

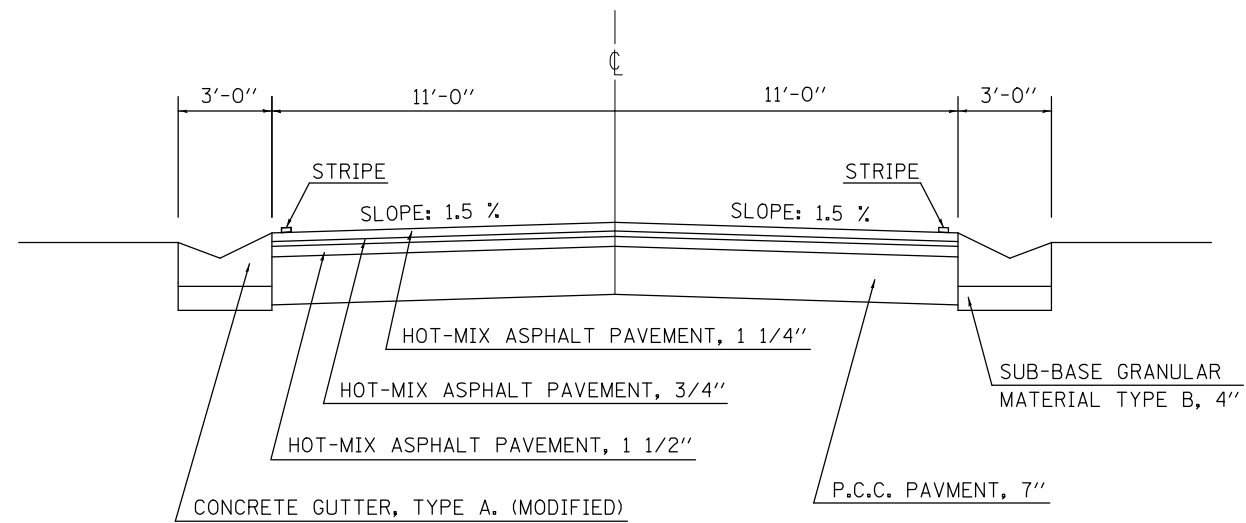
SUMMARY OF QUANTITIES

SCALE: SHEET 1 OF 2 SHEETS STA. TO STA.

F.A. RTE.	SECTION	COUNTY	TOTAL SHEETS	SHEET NO.
*	CM21-5016	CHAMPAIGN	21	3
* F.A.S. 1512 & F.A.P. 836			CONTRACT NO. 70F13	
ILLINOIS FED. AID PROJECT				

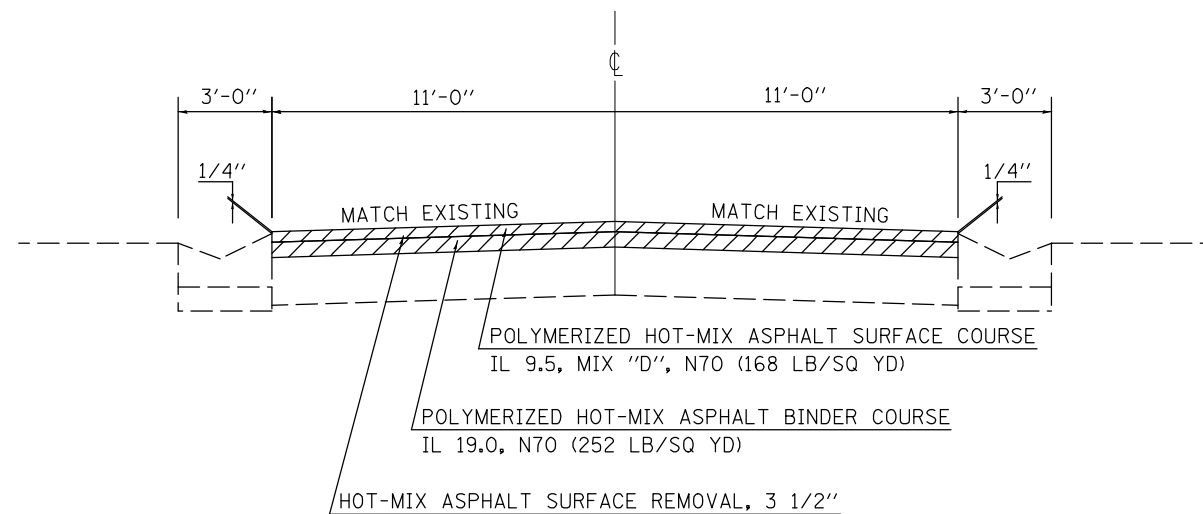
1 EXISTING TYPICAL CROSS SECTION (US 150)

STATION TO STATION
417+19.00 425+88.00 ②



1 PROPOSED TYPICAL CROSS SECTION (US 150)

STATION TO STATION
417+19.00 425+88.00 ②



MODEL: \\MODEL\MHFE
FILE: \\MAILS_P\pub\mcom.mad.illinois.gov\PWIDOT\Documents\DOT_Offices\District_5\Projects\US70F13\CADD\BIB\CADProcess\US70F13_rht-Typical.dgn

USER NAME = suix	DESIGNED -	REVISED -
	DRAWN -	REVISED -
PLOT SCALE = 40,0000 * / in.	CHECKED -	REVISED -
PLOT DATE = 1/20/2021	DATE -	REVISED -

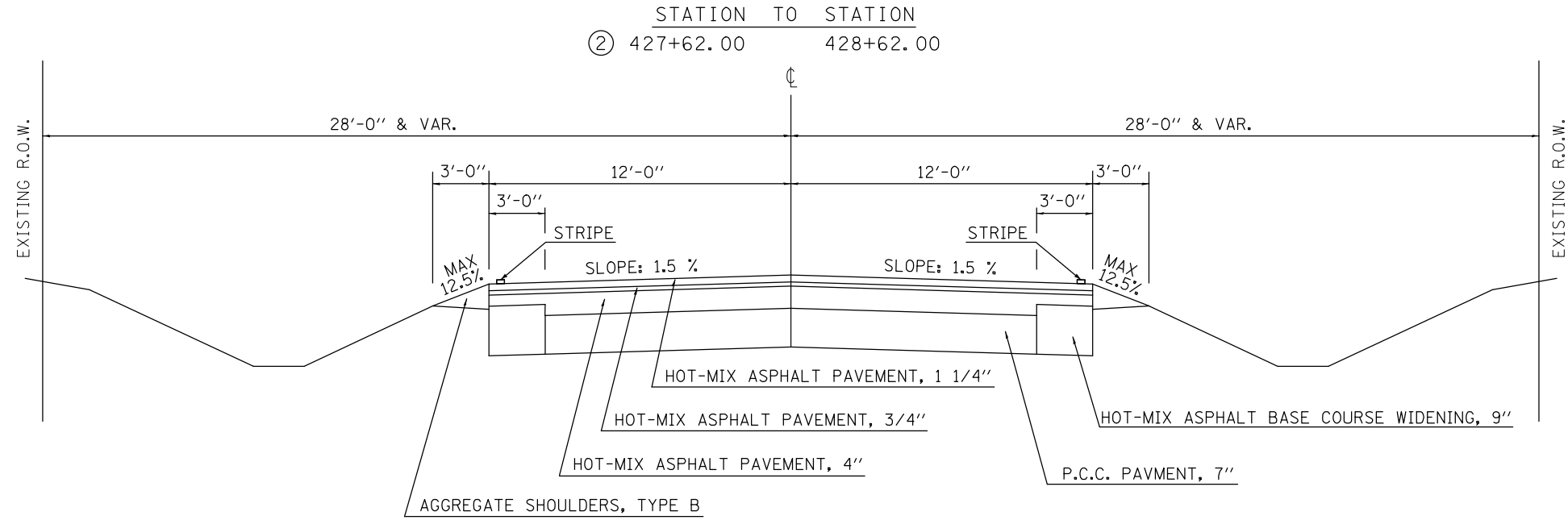
**STATE OF ILLINOIS
DEPARTMENT OF TRANSPORTATION**

TYPICAL CROSS SECTIONS

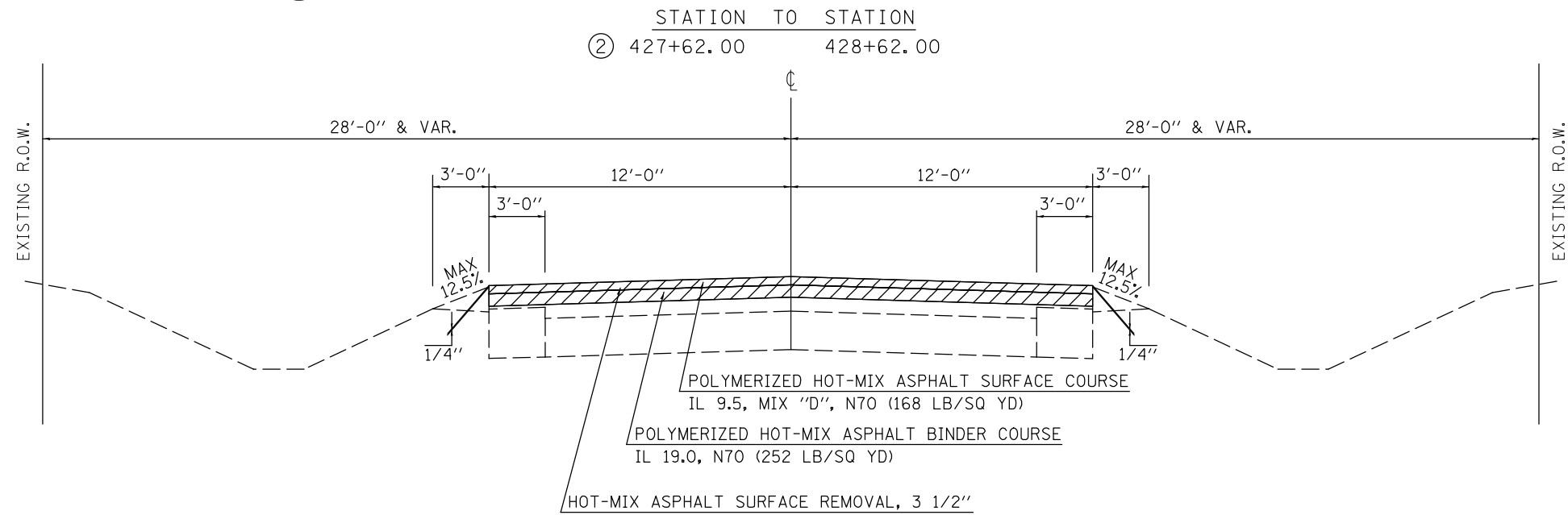
SCALE: SHEET 1 OF 6 SHEETS STA. TO STA.

F.A. RTE.	SECTION	COUNTY	TOTAL SHEETS	SHEET NO.
*	CM21-5016	CHAMPAIGN	21	5
* F.A.S. 1512 & F.A.P. 836		CONTRACT NO. 70F13		
ILLINOIS FED. AID PROJECT				

3 EXISTING TYPICAL CROSS SECTION (US 150)



3 PROPOSED TYPICAL CROSS SECTION (US 150)



MODEL: \\MODEL\MAME
 FILE NAME: \\p14\m1\com\dot\illinois.gov\PIWDOT\Documents\DOT_Offices\District 5\Projects\0570F13\CADD\01\01\CAD\Process\0570F13-rht-Typical.dgn

USER NAME = suix	DESIGNED -	REVISED -
	DRAWN -	REVISED -
PLOT SCALE = 40,0000 * / in.	CHECKED -	REVISED -
PLOT DATE = 1/20/2021	DATE -	REVISED -

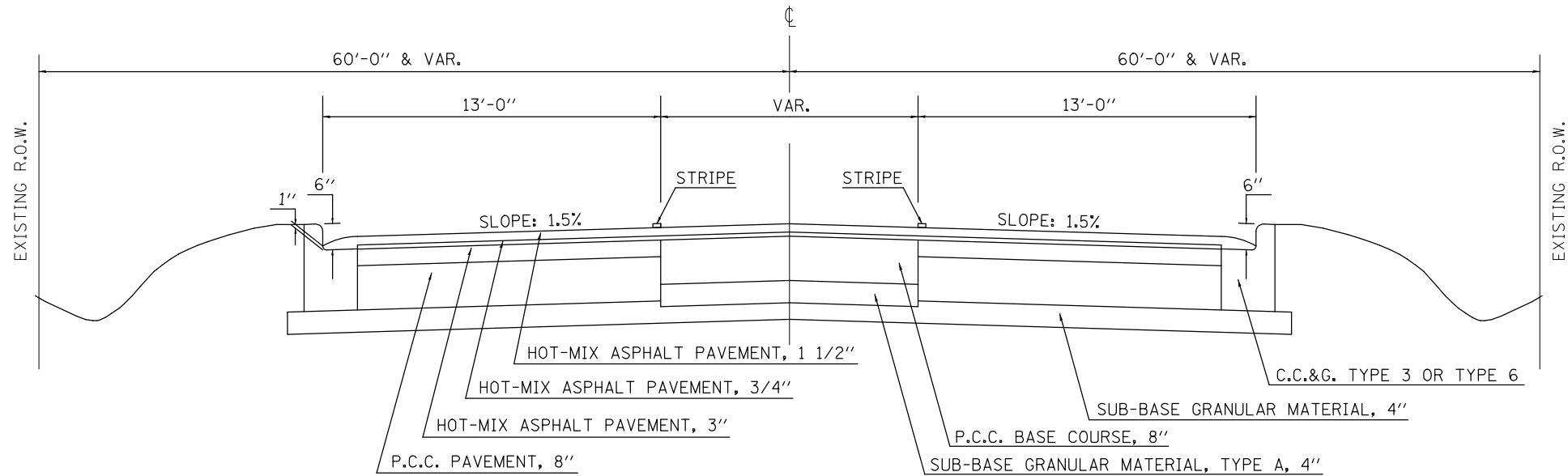
STATE OF ILLINOIS
DEPARTMENT OF TRANSPORTATION

TYPICAL CROSS SECTIONS			
SCALE:	SHEET 3	OF 6 SHEETS	STA. TO STA.

F.A. RTE.	SECTION	COUNTY	TOTAL SHEETS	SHEET NO.
-	CM21-5016	CHAMPAIGN	21	7
* F.A.S. 1512 & F.A.P. 836 CONTRACT NO. 70F13				
ILLINOIS FED. AID PROJECT				

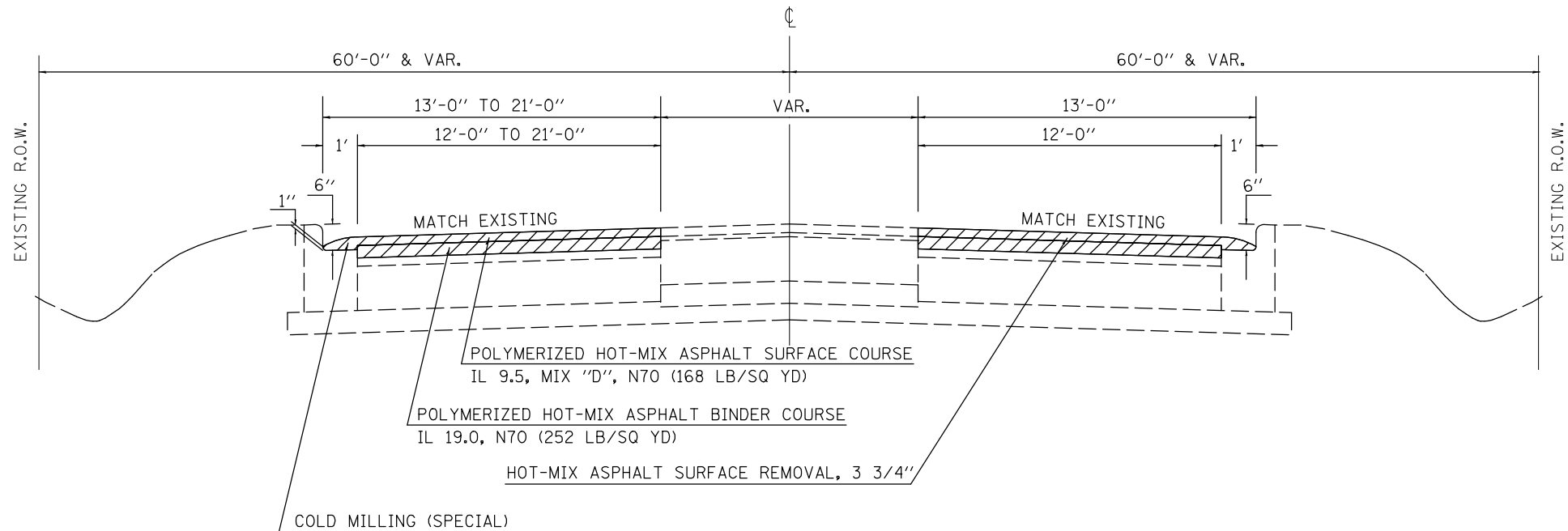
4 **EXISTING TYPICAL CROSS SECTION (ILL 49)**

STATION TO STATION
1212+85.00 1217+55.00



4 **PROPOSED TYPICAL CROSS SECTION (ILL 49)**

STATION TO STATION
1212+85.00 1217+55.00



MODEL: \\MODEL\MHFE
FILE NAME: \\pub\mcom\m.dwt\illinc\gov\pww\DOT\Documents\DOT - Office\Drawings\Projects\057013\2-ht-Typical.dgn

USER NAME = slrx	DESIGNED -	REVISED -
	DRAWN -	REVISED -
PLOT SCALE = 40,0000 * / in.	CHECKED -	REVISED -
PLOT DATE = 1/20/2021	DATE -	REVISED -

**STATE OF ILLINOIS
DEPARTMENT OF TRANSPORTATION**

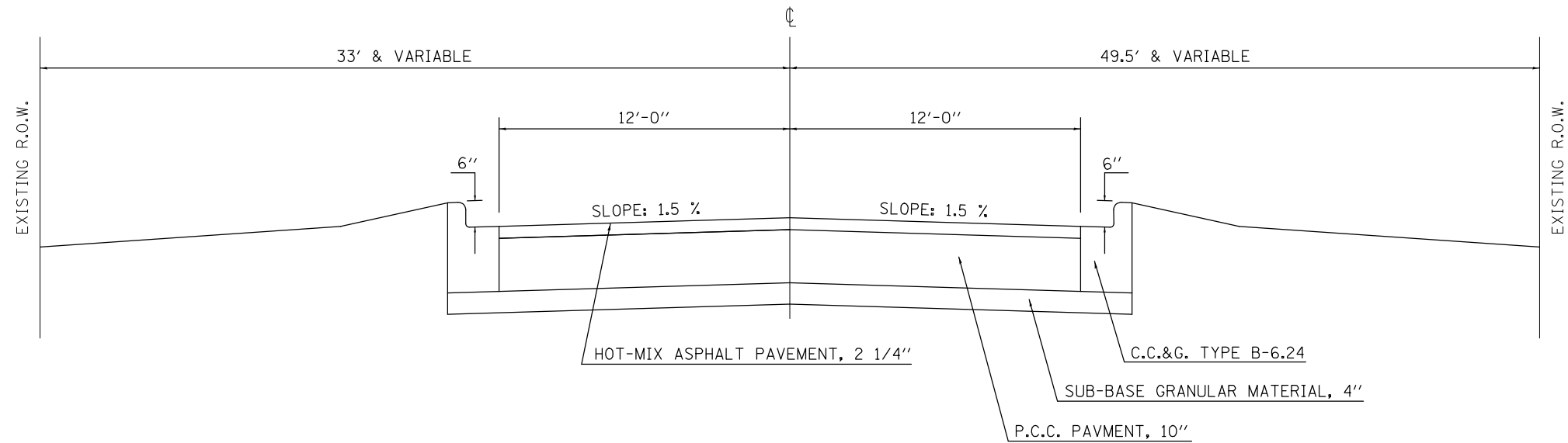
TYPICAL CROSS SECTIONS

SCALE: SHEET 4 OF 6 SHEETS STA. TO STA.

F.A. RTE.	SECTION	COUNTY	TOTAL SHEETS	SHEET NO.
-	CM21-5016	CHAMPAIGN	21	8
* F.A.S. 1512 & F.A.P. 836 CONTRACT NO. 70F13				
ILLINOIS FED. AID PROJECT				

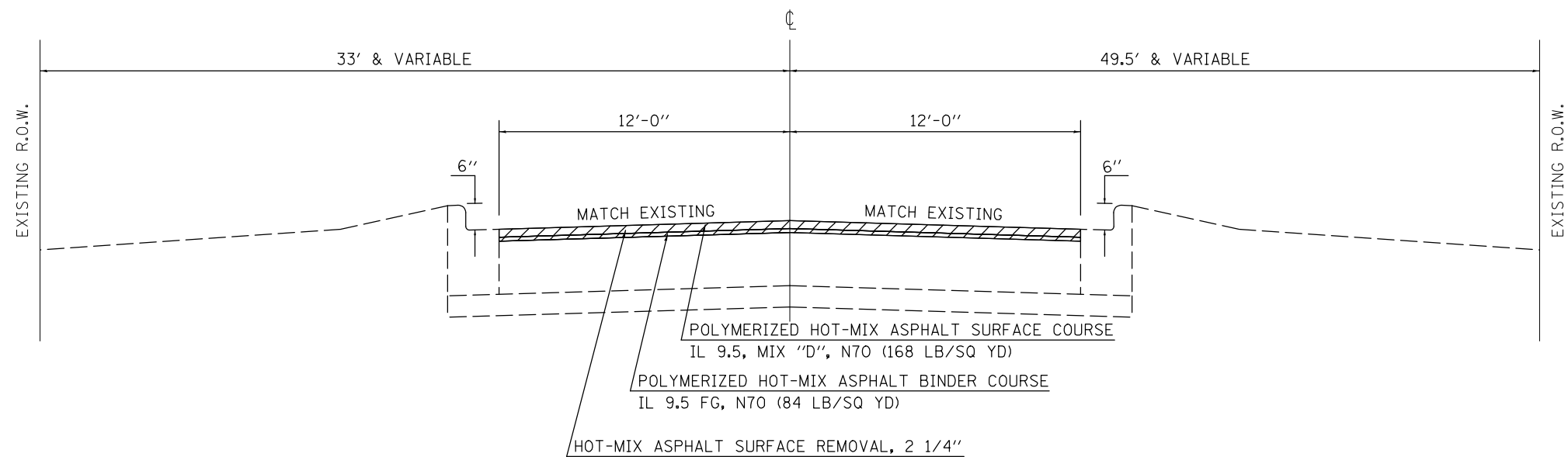
5 **EXISTING TYPICAL CROSS SECTION (ILL 49)**

STATION TO STATION
 LT. 1218+08.85 1218+58.20
 RT. 1218+08.85 1219+12.23



5 **PROPOSED TYPICAL CROSS SECTION (ILL 49)**

STATION TO STATION
 LT. 1218+08.85 1218+58.20
 RT. 1218+08.85 1219+12.23



MODEL: \\MODEL\MAME
 FILE NAME: \\p14\m1\com\dot\illinc\gov\p14\dot\Documents\DOT_Offices\District 5\Projects\0570F13\CADD\BIB\CAD\Faces\0570F13.rvt-Typical.dgn

USER NAME = suix	DESIGNED -	REVISED -
	DRAWN -	REVISED -
PLOT SCALE = 40,0000 * / in.	CHECKED -	REVISED -
PLOT DATE = 1/20/2021	DATE -	REVISED -

**STATE OF ILLINOIS
 DEPARTMENT OF TRANSPORTATION**

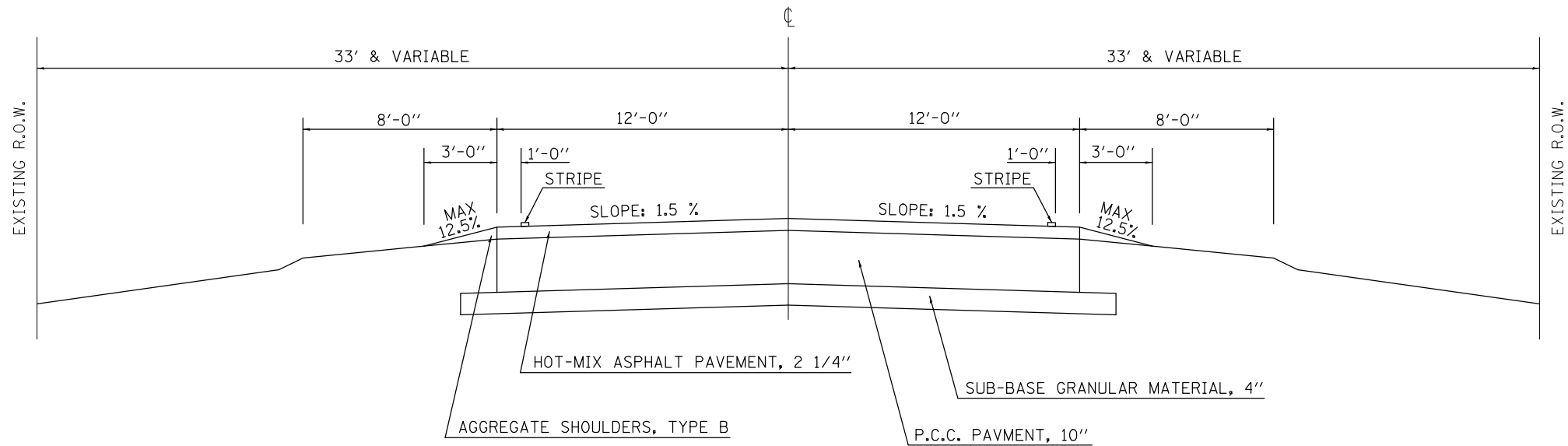
TYPICAL CROSS SECTIONS

SCALE: SHEET 5 OF 6 SHEETS STA. TO STA.

F.A. RTE.	SECTION	COUNTY	TOTAL SHEETS	SHEET NO.
-	CM21-5016	CHAMPAIGN	21	9
* F.A.S. 1512 & F.A.P. 836 CONTRACT NO. 70F13				
ILLINOIS FED. AID PROJECT				

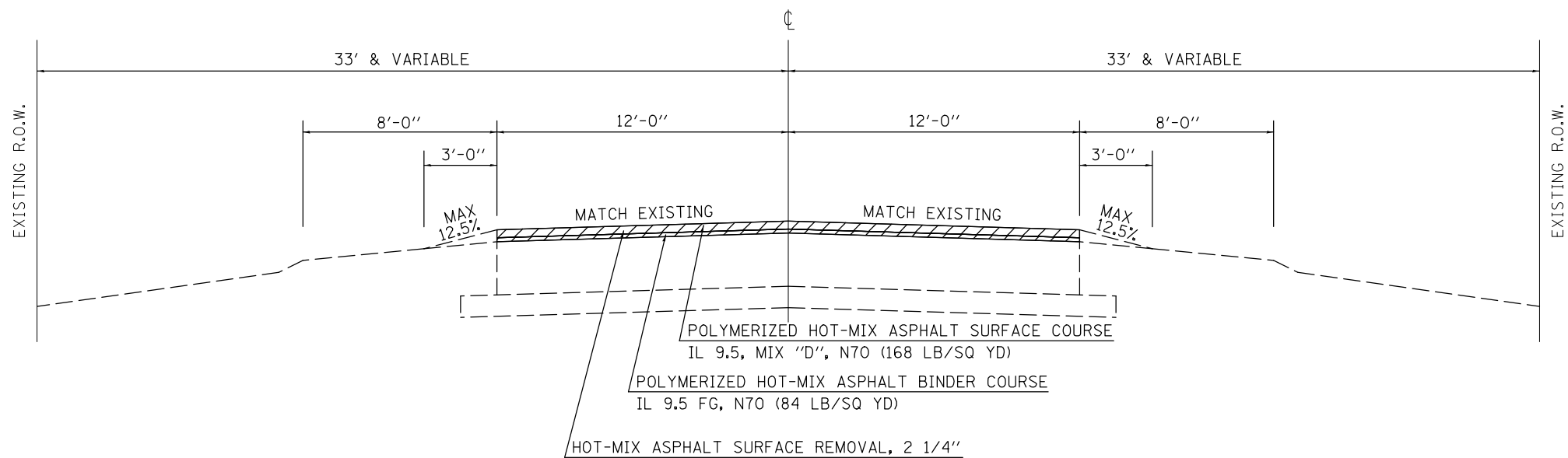
6 EXISTING TYPICAL CROSS SECTION (ILL 49)

	STATION TO STATION	
⑤	LT. 1218+58.20	1219+82.00
⑤	RT. 1219+12.23	1219+82.00



6 PROPOSED TYPICAL CROSS SECTION (ILL 49)

	STATION TO STATION	
⑤	LT. 1218+58.20	1219+82.00
⑤	RT. 1219+12.23	1219+82.00



MODEL: \\MODEL\NAME: FILE: NAME: \\... \Project\057013\CAD\Drawings\057013.rvt-PlotTypical.dgn

USER NAME = suix	DESIGNED -	REVISED -
	DRAWN -	REVISED -
PLOT SCALE = 40,0000 * / in.	CHECKED -	REVISED -
PLOT DATE = 1/20/2021	DATE -	REVISED -

**STATE OF ILLINOIS
DEPARTMENT OF TRANSPORTATION**

TYPICAL CROSS SECTIONS

SCALE: SHEET 6 OF 6 SHEETS STA. TO STA.

F.A. RTE.	SECTION	COUNTY	TOTAL SHEETS	SHEET NO.
-	CM21-5016	CHAMPAIGN	21	10
* F.A.S. 1512 & F.A.P. 836 CONTRACT NO. 70F13				
ILLINOIS FED. AID PROJECT				

SCHEDULE OF QUANTITIES

SHORT TERM PAVEMENT MARKING AND RAISED REFLECTIVE PAVEMENT MARKER SCHEDULE

<i>US 150 at St. Joseph between Elm and Main St</i>									SHORT TERM PAVEMENT MARKING (FOOT)	SHORT TERM PAVEMENT MARKING REMOVAL (SQ FT)	RAISED REFLECTIVE PAVEMENT MARKER (EACH)	RAISED REFLECTIVE PAVEMENT MARKER REMOVAL (EACH)
<i>LEG "A"</i>												
LOCATIONS	STATION	TO	STATION	LENGTH (FOOT)	WIDTH (FOOT)	AREA (SQ FT)	CENTERLINE SKIP DASH 4" (EACH)	STOP BAR 12" (FOOT)				
LEG "A" EB	417+19	TO	427+62	1043.0	11.0	11473.0	42.0		70300100	70300150	78100100	78300200
LEG "A" EB	427+62	TO	428+62	100.0	12.0	1200.0	6.0		168.0	56.0	12.0	10.0
LEG "A" WB	424+96	TO	427+62	266.0	11.0	2926.0			24.0	8.0	2.0	1.0
LEG "A" WB	427+62	TO	428+62	100.0	12.0	1200.0						
SUBTOTAL :									192.0	64.0	14.0	11.0
USE :									192.0	64.0	14.0	11.0

SURVEY MARKER TYPE 2

<i>ILL 49 at Ogden just N of US 150/ILL 47 intersection LEG "C"</i>		SURVEY MARKER TYPE 2 (SPECIAL) (EACH)
LOCATION	STATION	
LEG "C"	1219+05 (CL)*	1.0
SUBTOTAL :		1.0
USE :		1.0

* STATION IS APPROXIMATE

SHORT TERM PAVEMENT MARKING AND RAISED REFLECTIVE PAVEMENT MARKER SCHEDULE

<i>ILL 49 at Ogden just S of US 150/ILL 47 intersection</i>									SHORT TERM PAVEMENT MARKING (FOOT)	SHORT TERM PAVEMENT MARKING REMOVAL (SQ FT)	RAISED REFLECTIVE PAVEMENT MARKER (EACH)	RAISED REFLECTIVE PAVEMENT MARKER REMOVAL (EACH)
<i>LEG "B"</i>												
LOCATIONS	STATION	TO	STATION	LENGTH (FOOT)	WIDTH (FOOT)	AREA (SQ FT)	CENTERLINE SKIP DASH (EACH)	STOP BAR 12" (FOOT)				
LEG "B" NB	1212+85	TO	1217+55	470.0	13.0	6110.0		25.0	70300100	70300150	78100100	78300200
LEG "B" SB	1214+97	TO	1216+79	182.0	13.0	2366.0					5.0	1.0
LEG "B" SB	1216+79	TO	1217+26	47.0	14.5	681.5					5.0	5.0
LEG "B" SB	1217+26	TO	1217+55	29.0	21.0	609.0						
SUBTOTAL :									75.0	25.0	20.0	17.0
USE :									75.0	25.0	20.0	17.0

SHORT TERM PAVEMENT MARKING AND RAISED REFLECTIVE PAVEMENT MARKER SCHEDULE

<i>ILL 49 at Ogden just N of US 150/ILL 47 intersection</i>									SHORT TERM PAVEMENT MARKING (FOOT)	SHORT TERM PAVEMENT MARKING REMOVAL (SQ FT)	RAISED REFLECTIVE PAVEMENT MARKER (EACH)	RAISED REFLECTIVE PAVEMENT MARKER REMOVAL (EACH)
<i>LEG "C"</i>												
LOCATIONS	STATION	TO	STATION	LENGTH (FOOT)	WIDTH (FOOT)	AREA (SQ FT)	CENTERLINE SKIP DASH (EACH)	STOP BAR 12" (FOOT)				
LEG "C" NB	1218+09	TO	1219+82	173.0	12.0	2076.0	8.0		70300100	70300150	78100100	78300200
LEG "C" SB	1218+09	TO	1219+82	173.0	12.0	2076.0		21.0	32.0	10.7	3.0	2.0
									63.0	21.0		
SUBTOTAL :									95.0	31.7	3.0	2.0
USE :									95.0	32.0	3.0	2.0

SUMMARY

	BITUMINOUS MATERIALS (TACK COAT) (POUND)	TEMPORARY RAMP (SQ YD)	POLY. H.M.A. BINDER CRSE. IL-9.5FG, N70 (TON)	POLY. H.M.A. BINDER CRSE. IL-19.0, N70 (TON)	POLY. H.M.A. SURFACE CRSE. IL-9.5, MIX "D", N70 (TON)	HOT-MIX ASPHALT SURFACE REMOVAL 2 1/4" (SQ YD)	HOT-MIX ASPHALT SURFACE REMOVAL 3 1/2" (SQ YD)	HOT-MIX ASPHALT SURFACE REMOVAL 3 3/4" (SQ YD)	SHORT TERM PAVEMENT MARKING (FOOT)	SHORT TERM PAVEMENT MARKING REMOVAL (SQ FT)	RAISED REFLECTIVE PAVEMENT MARKER (EACH)	RAISED REFLECTIVE PAVEMENT MARKER REMOVAL (EACH)	COLD MILLING (SPECIAL) (SQ YD)
	40600290	40600990	40603218	40603235	40604162	44000158	44000163	44000164	70300100	70300150	78100100	78300200	Z0010910
US 150 GRAND TOTAL :	1260.0	64.0		236.0	157.0		1867.0		192.0	64.0	14.0	11.0	
ILL 49 GRAND TOTAL :	996.0	120.0	20.0	120.0	131.0	462.0		1013.0	170.0	57.0	23.0	19.0	81.0

MODEL: I:\MODEL\NAMES FILE NAME: P:\pub\mcom\m.dwt\illinc\gwp\WIDOT\Documents\DOT Office\District 5\Projects\057013\CADD\DATA\CAD\Faces\057013.rpt-Schedule.dgn

USER NAME = suix	DESIGNED -	REVISED -
	DRAWN -	REVISED -
PLOT SCALE = 40,0000 * / in.	CHECKED -	REVISED -
PLOT DATE = 1/20/2021	DATE -	REVISED -

**STATE OF ILLINOIS
DEPARTMENT OF TRANSPORTATION**

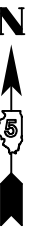
SCHEDULE OF QUANTITIES

SCALE: SHEET 2 OF 2 SHEETS STA. TO STA.

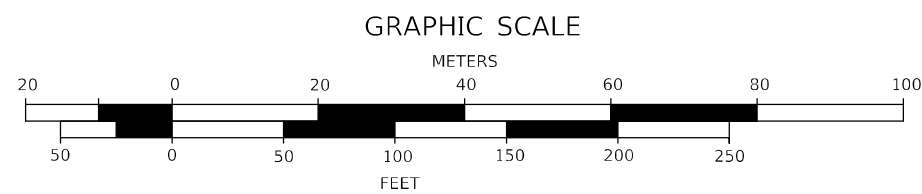
F.A. RTE.	SECTION	COUNTY	TOTAL SHEETS	SHEET NO.
	CM21-5016	CHAMPAIGN	21	12
ILLINOIS FED. AID PROJECT			CONTRACT NO. 70F13	



LEG "A"
EB
BEGINS:
417+19



MODEL: \\MODEL\NAME
 FILE: \\NAME: \\pub\hmonr\m\dat\illinc\gwp\PIWDOT\Documents\DOT_Offices\Distric: 5\Projects\0570113\CADD\DATA\CAD\Process\0570113-rt-rlbr.dgn



LEGEND:

HMA RESURFACING
 3 1/2"

USER NAME = suix	DESIGNED -	REVISED -
	DRAWN -	REVISED -
PLOT SCALE = 40,0000 */ in.	CHECKED -	REVISED -
PLOT DATE = 1/20/2021	DATE -	REVISED -

**STATE OF ILLINOIS
DEPARTMENT OF TRANSPORTATION**

**PLAN SHEET
FAS 1512 (US 150) LEG "A"**

SCALE: SHEET 1 OF 5 SHEETS STA. TO STA.

F.A. RTE.	SECTION	COUNTY	TOTAL SHEETS	SHEET NO.
*	CM21-5016	CHAMPAIGN	21	13
* F.A.S. 1512 & F.A.P. 836			CONTRACT NO. 70F13	
ILLINOIS		FED. AID PROJECT		

MODEL: \\MODEL\NAME
 FILE NAME: \\PUB\ADMIN\DATA\ILLINOIS\DOT\Documents\IBDOT\Office\Drawings\Projects\0570113\0570113-1512-1512-1512.dwg



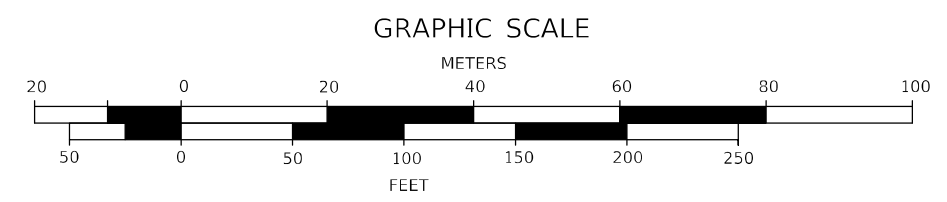
LEG "A"
 WB
 BEGINS:
 424+96

LEG "A"
 WB
 ENDS:
 428+62

LEG "A"
 EB
 ENDS:
 428+62



LEG "A" EB & WB AT STATION 427+62
 LANE WIDTH CHANGE FROM 11' TO 12'.



LEGEND:

HMA RESURFACING
 3 1/2"

USER NAME = suix	DESIGNED -	REVISED -
	DRAWN -	REVISED -
PLOT SCALE = 40,0000 */ in.	CHECKED -	REVISED -
PLOT DATE = 1/20/2021	DATE -	REVISED -

**STATE OF ILLINOIS
 DEPARTMENT OF TRANSPORTATION**

PLAN SHEET
FAS 1512 (US 150) LEG "A"

SCALE: SHEET 2 OF 5 SHEETS STA. TO STA.

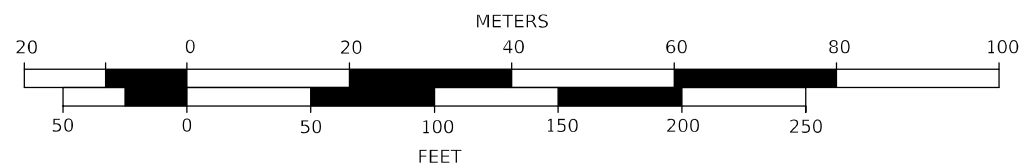
F.A. RTE.	SECTION	COUNTY	TOTAL SHEETS	SHEET NO.
~	CM21-5016	CHAMPAIGN	21	14
* F.A.S. 1512 & F.A.P. 836 CONTRACT NO. 70F13				
ILLINOIS FED. AID PROJECT				



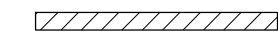
LEG "B" NB BEGINS: 1212+85



GRAPHIC SCALE



LEGEND:



HMA RESURFACING
3 3/4"

MODEL: \\MODEL\NAME
FILE: \\NAME: \\pub\hmon\m.dwg; \\pub\hmon\p\WIDOT\Documents\DOT_Offices\District 5\Projects\0570F13\CADD\DATA\CAD\Process\0570F13_rht_rln.dwg

USER NAME = slrx	DESIGNED -	REVISED -
	DRAWN -	REVISED -
PLOT SCALE = 40,0000 */ in.	CHECKED -	REVISED -
PLOT DATE = 1/20/2021	DATE -	REVISED -

**STATE OF ILLINOIS
DEPARTMENT OF TRANSPORTATION**

**PLAN SHEET
FAP 836 (ILL 49) LEG "B"**

SCALE: SHEET 3 OF 5 SHEETS STA. TO STA.

F.A. RTE.	SECTION	COUNTY	TOTAL SHEETS	SHEET NO.
*	CM21-5016	CHAMPAIGN	21	15
* F.A.S. 1512 & F.A.P. 836			CONTRACT NO. 70F13	
ILLINOIS FED. AID PROJECT				

LEG "C" SB
ENDS:
1219+82

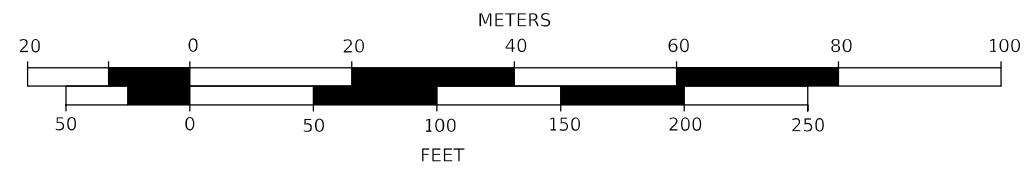
LEG "C" NB
ENDS:
1219+82

LEG "C" SB
BEGINS:
1218+09

LEG "C" NB
BEGINS:
1218+09



GRAPHIC SCALE



LEGEND:

HMA RESURFACING
2 1/4"

MODEL: \\MODEL\NAME
FILE: NAME: P:\pub\mcom\m.dwt
PROJECT: 05701131\CD\DATA\CAD\Process\05701131\h-r-lbr.dwg

USER NAME = suix	DESIGNED -	REVISED -
	DRAWN -	REVISED -
PLOT SCALE = 40,0000 */ in.	CHECKED -	REVISED -
PLOT DATE = 1/20/2021	DATE -	REVISED -

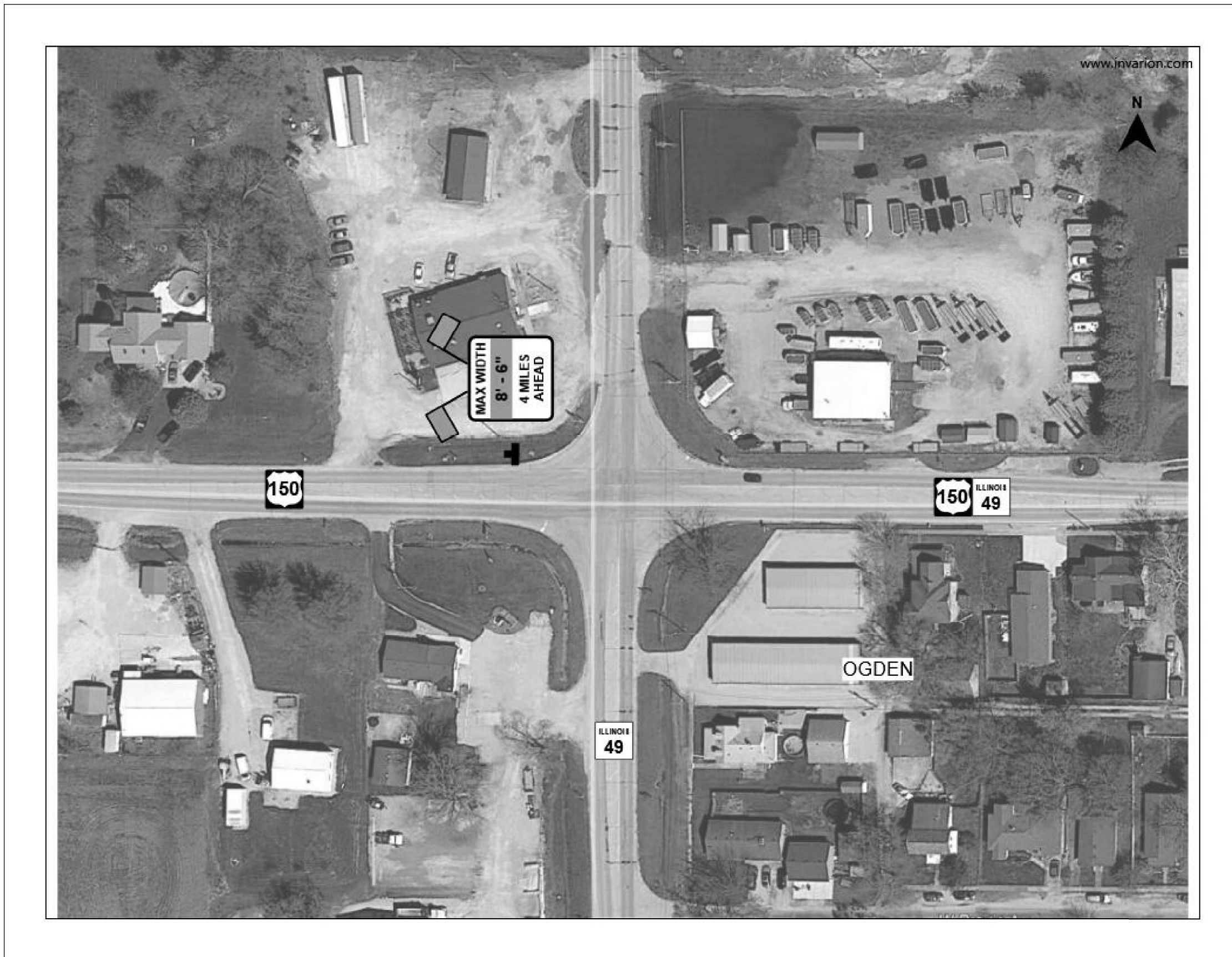
**STATE OF ILLINOIS
DEPARTMENT OF TRANSPORTATION**

**PLAN SHEET
FAP 836 (ILL 49) LEG "C"**

SCALE: SHEET 5 OF 5 SHEETS STA. TO STA.

F.A. RTE.	SECTION	COUNTY	TOTAL SHEETS	SHEET NO.
	CM21-5016	CHAMPAIGN	21	17
* F.A.S. 1512 & F.A.P. 836 CONTRACT NO. 70F13				
ILLINOIS FED. AID PROJECT				

WIDTH RESTRICTION SIGNING DETAIL



MODEL: \\MODEL\NAME
 FILE: NAME: \\invarion.com\dtd\illinois\gov\PI\DOT\Documents\DOT_Offices\District 5\Projects\0570113\CD\001\01\CAD\Faces\0570113_rh-Detail.dwg

USER NAME = suix	DESIGNED -	REVISED -
	DRAWN -	REVISED -
PLOT SCALE = 40,0000 * / in.	CHECKED -	REVISED -
PLOT DATE = 1/20/2021	DATE -	REVISED -

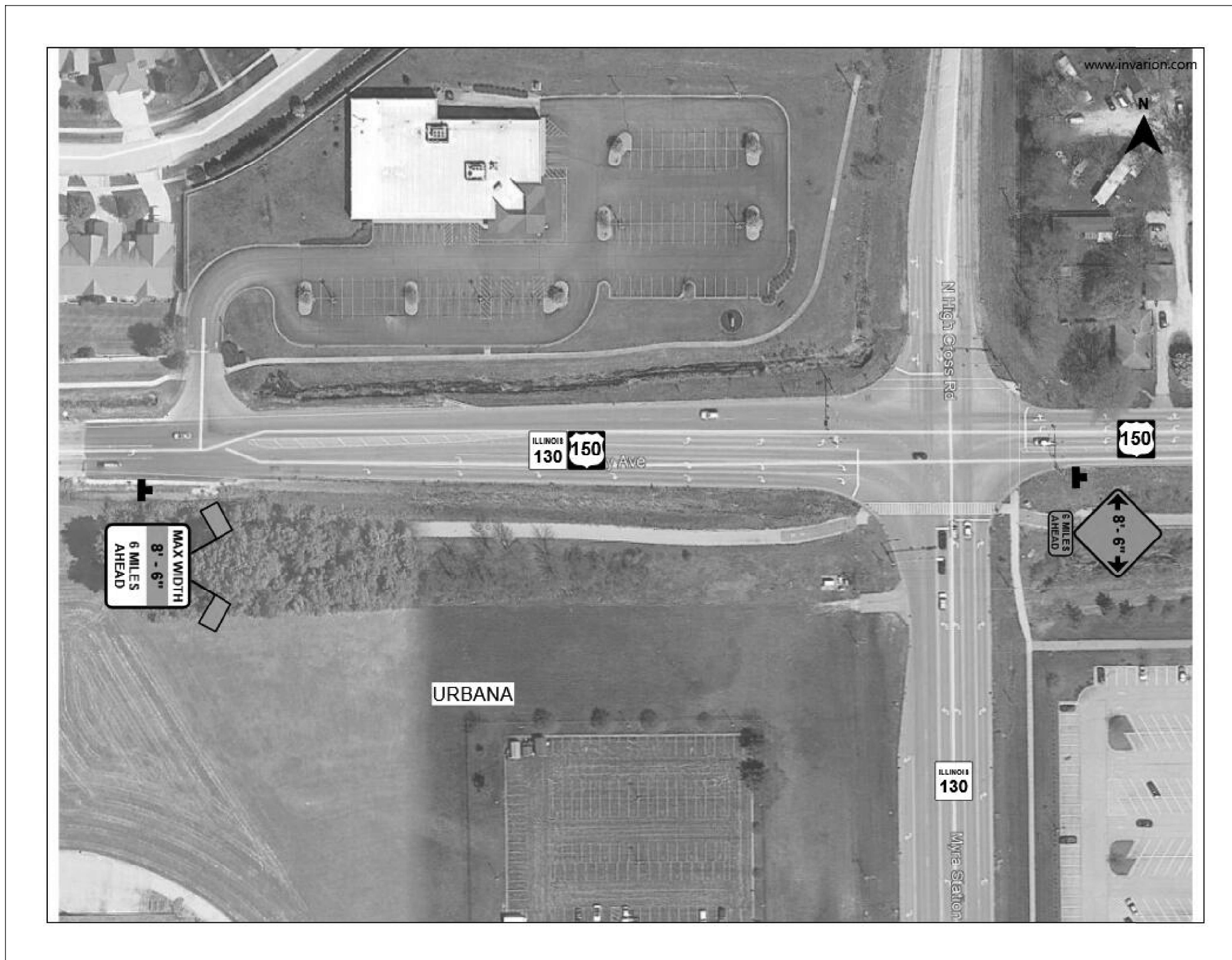
**STATE OF ILLINOIS
DEPARTMENT OF TRANSPORTATION**

WIDTH RESTRICTION SIGNING DETAIL

SCALE: SHEET 1 OF 2 SHEETS STA. TO STA.

F.A.P. RTE.	SECTION	COUNTY	TOTAL SHEETS	SHEET NO.
808	CM21-5015	CHAMPAIGN	21	18
CONTRACT NO. 70F12				
ILLINOIS FED. AID PROJECT				

WIDTH RESTRICTION SIGNING DETAIL



MODEL: \\MODEL\NAME
 FILE: NAME.dwg
 PROJECT: \\PROJECT\NAME
 OFFICE: \\OFFICE\NAME
 DATE: 1/20/2021

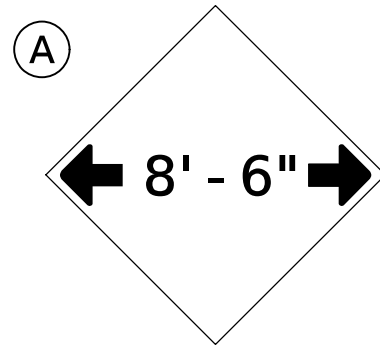
USER NAME = suix	DESIGNED -	REVISED -
PLOT SCALE = 40,0000 * / in.	DRAWN -	REVISED -
PLOT DATE = 1/20/2021	CHECKED -	REVISED -
	DATE -	REVISED -

**STATE OF ILLINOIS
DEPARTMENT OF TRANSPORTATION**

WIDTH RESTRICTION SIGNING DETAIL

SCALE: SHEET 2 OF 2 SHEETS STA. TO STA.

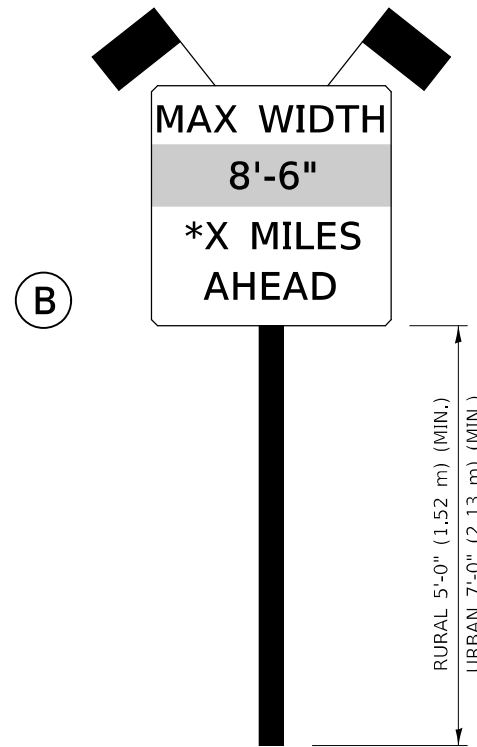
F.A.P. RTE.	SECTION	COUNTY	TOTAL SHEETS	SHEET NO.
808	CM21-5015	CHAMPAIGN	21	19
CONTRACT NO. 70F12				
ILLINOIS FED. AID PROJECT				



W12-2(O)-48"x48"(1200x1200)

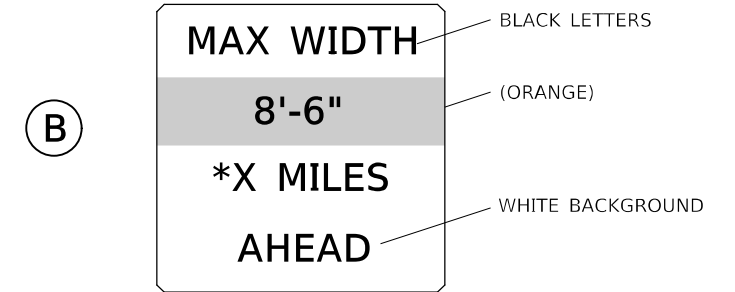
SIGN (A) 2 SIGNS - W12-2(O)-48"x48"(1200x1200) ARE TO BE PLACED AS SHOWN IN THE PLANS OR AS DIRECTED BY THE ENGINEER.

SIGN (B) 2 SIGNS - (SIGN PANEL, TYPE II) AS SHOWN ARE TO BE PLACED AS SHOWN IN THE PLANS OR AS DIRECTED BY THE ENGINEER.



*SEE SHEETS 18 AND 19.

SIGN PANEL, TYPE II



*SEE SHEETS 18 AND 19.

**W12-I103(O)-48"x48"(1200x1200)
"D" LETTERS/NUMBERS**

GENERAL NOTES

1. ALL TRAFFIC CONTROL DEVICES SHALL BE FURNISHED, ERECTED AND MAINTAINED BY THE CONTRACTOR.
2. ALL (B) SIGNS SHALL HAVE FLAGS INSTALLED UNLESS OTHERWISE DIRECTED.
3. LOCATIONS OF TRAFFIC CONTROL DEVICES MAY BE ADJUSTED BY THE ENGINEER.
4. ALL TRAFFIC CONTROL SHOWN ON THIS SHEET SHALL BE PAID FOR AT THE CONTRACT LUMP SUM PRICE FOR WIDTH RESTRICTION SIGNING.
5. ALL SIGNS SHALL BE POST MOUNTED UNLESS OTHERWISE DIRECTED.
6. ALL SIGNS SHOWN ORANGE (O) SHALL BE FLUORESCENT ORANGE.
7. ALL SIGNS SHOWN SHALL CONSIST OF THE CURRENT RETROREFLECTIVE SHEETING REQUIREMENTS AS OUTLINED IN SECTION 1106.01 OF THE STANDARD SPECIFICATIONS BOOK.

Note: All dimensions are in INCHES (millimeters) unless otherwise shown.

MODEL: \\MODEL\NAME
 FILE: NAME: \\path\to\file.dwg
 PROJECT: \\path\to\project\DWG\PROJECTS\0570112\01-Details.dwg

USER NAME = suix	DESIGNED -	REVISED - 05/08
	DRAWN -	REVISED - 10/08 KJT
PLOT SCALE = 40,0000 * / in.	CHECKED -	REVISED - 07/09 KJT
PLOT DATE = 1/20/2021	DATE -	REVISED - 03/11 KJT

**STATE OF ILLINOIS
DEPARTMENT OF TRANSPORTATION**

WIDTH RESTRICTION SIGNING

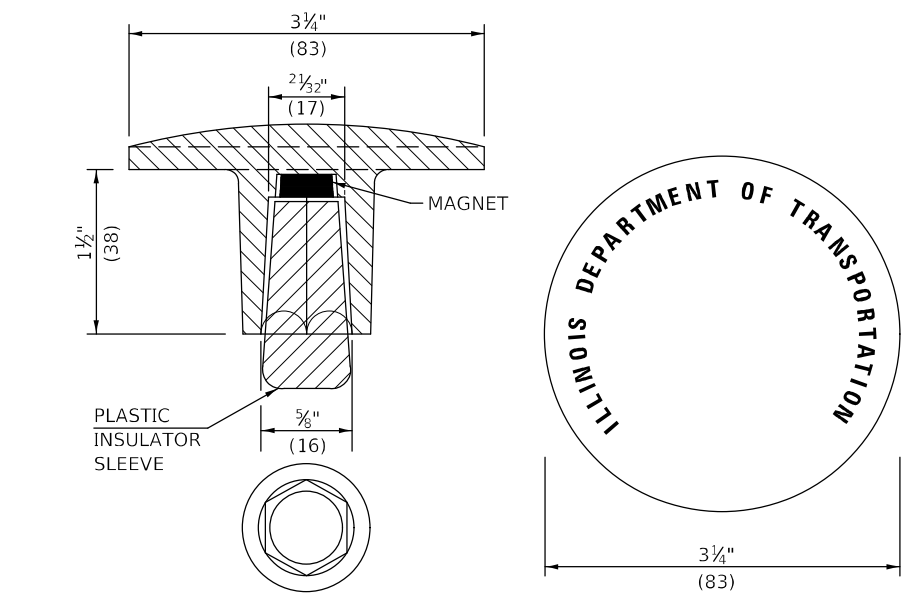
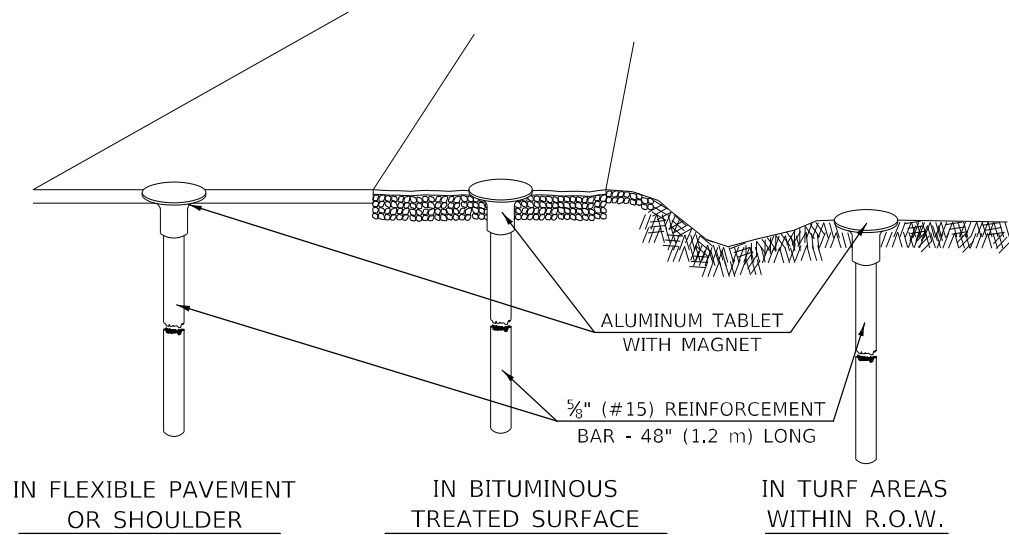
SCALE: SHEET 1 OF 1 SHEETS STA. TO STA.

DISTRICT 5 DETAIL NO. X7200201

F.A.P. RTE.	SECTION	COUNTY	TOTAL SHEETS	SHEET NO.
808	CM21-5015	CHAMPAIGN	21	20
CONTRACT NO. 70F12				
ILLINOIS			FED. AID PROJECT	

XZ193300 – SURVEY MARKER, TYPE 1 (SPECIAL)

TO BE INSTALLED IN FLEXIBLE PAVEMENT OR SHOULDER, BITUMINOUS TREATED SURFACE AND TURF AREAS WITHIN THE RIGHT-OF-WAY FOR PRESERVING PERMANENT SURVEY MARKERS (PI'S, PT'S, PC'S, POC'S, & POT'S)



THE DIMENSIONS SHOWN SHALL BE EXACT, OTHERS MAY VARY, BUT SHALL BE SHOWN ON SHOP DRAWINGS.

GENERAL NOTES

1. THE CONTRACT UNIT PRICE, EACH, FOR SURVEY MARKER, TYPE 1 (SPECIAL) SHALL BE PAYMENT IN FULL FOR FURNISHING THE REINFORCEMENT BAR AND ALUMINUM TABLET AND FOR ALL LABOR AND MATERIAL REQUIRED TO SET THE MARKER IN PLACE.
2. ALL SURVEY MARKERS, TYPE 1 (SPECIAL) SHALL BE PLACED ±1/4" (6 mm) BELOW THE FINAL SURFACE.
3. WHEN THE TABLET AND REBAR ARE PLACED AS PART OF A SURVEY MARKER VAULT, THEY SHALL BE CONSIDERED AS INCLUDED IN THAT PAY ITEM AND THERE WILL BE NO PAYMENT FOR THE SURVEY MARKER, TYPE 1 (SPECIAL).

SPECIFICATIONS FOR ALUMINUM TABLET

SURVEY CAP FOR REBAR. 3 1/4" (83 mm) CONVEX SURVEY CAP FOR 5/8" (15 mm) REBAR WITH ILLINOIS DEPARTMENT OF TRANSPORTATION LOGO. THIS LOGO SHALL PROVIDE LETTERS RECESSED INTO THE SURFACE A MINIMUM OF 1/32" (0.8 mm) FOR EASY AND LONG-TERM LEGIBILITY. THE ALUMINUM CAP FOR REBAR SHALL BE PRODUCED BY THE PROCESS OF ORBITAL FORGING TO PRODUCE A HIGH-STRENGTH AND DURABLE MARKER CAP WHICH WILL NOT CHIP OR BREAK AND PROVIDE A SMOOTH FINISH FOR STAMPING OF DATA IN THE FIELD. THE ALUMINUM CAP FOR REBAR SHALL BE TAPERED FOR A PERFECT COMPRESSION FIT. A SPECIAL PLASTIC INSULATOR SHALL BE INSTALLED TO PREVENT DISSIMILAR METAL CONTACT AND CORROSION. THE PLASTIC INSULATOR SHALL FORM READILY TO THE OUTER SHAPE OF THE REBAR AND TO THE INNER SHAPE OF THE ALUMINUM CAP SOCKET. THE PLASTIC INSULATOR SHALL BE LOW DENSITY POLYETHYLENE, A MINIMUM 1 1/2" (38 mm) LONG AND CONFORM TO FEDERAL SPECIFICATION L-P 390.

COMPOSITION: ALUMINUM 98.3-98.7%; OTHER 1.3-1.7%; STRENGTH: YIELD 28 KSI (193 MPa), ULTIMATE 32 KSI (221 MPa). ELONGATION 15% [IN 2" (50 mm)]. SPECIFICATIONS: ALUMINUM ALLOY 6101-0; ASTM B317-83 (EXCEPT TEMPER) AS FORGED. NO EXCEPTIONS.

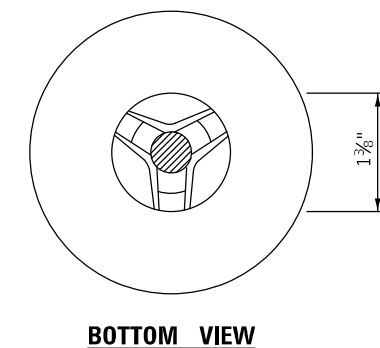
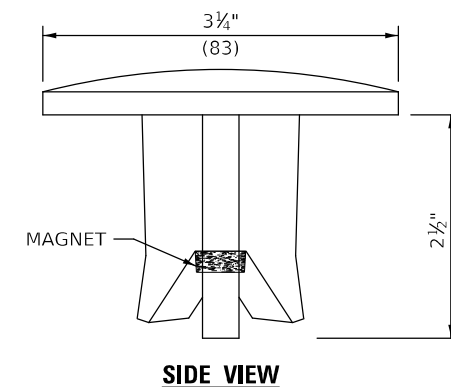
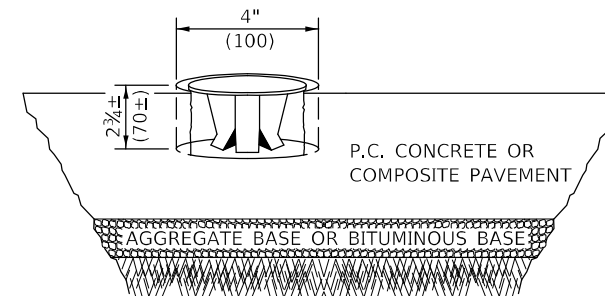
SPECIFICATIONS FOR REBAR

REBAR FOR ALUMINUM TABLET. REINFORCEMENT BAR SHALL BE 5/8" (#15) X 48" (1.2 m) (DEFORMED).

INSPECTION OF REINFORCEMENT BAR 5/8" (#15) SHALL BE DONE BY DISTRICT PERSONNEL OF THE ILLINOIS DEPARTMENT OF TRANSPORTATION, DIVISION OF HIGHWAYS.

XZ193400 – SURVEY MARKER, TYPE 2 (SPECIAL)

TO BE INSTALLED IN RIGID OR COMPOSITE PAVEMENT FOR PRESERVING PERMANENT SURVEY MARKERS (PI'S, PT'S, PC'S, POC'S, & POT'S)



THE DIMENSIONS SHOWN SHALL BE EXACT, OTHERS MAY VARY, BUT SHALL BE SHOWN ON SHOP DRAWINGS.

GENERAL NOTES

1. WORK ON THIS ITEM SHALL NOT START UNTIL THE FINAL SURFACE IS COMPLETED.
2. THE ALUMINUM TABLET (FORKED) SHALL REST UPON THE BOTTOM OF THE 4" (100 mm) CORE HOLE. IF THE HOLE IS TOO DEEP, EPOXY GROUT MUST BE USED TO DECREASE THE DEPTH AND ALLOWED TO HARDEN BEFORE PROCEEDING.
3. THE ALUMINUM TABLET SHALL BE ANCHORED IN THE 4" (100 mm) DIAMETER HOLE IN THE NEW PAVEMENT WITH TWO-COMPONENT EPOXY CONFORMING TO APPLICABLE PORTIONS OF ARTICLE 1025.01 OF THE STANDARD SPECIFICATIONS.
4. THE 4" (100 mm) CORE HOLE SHALL BE SUBJECT TO THE APPROVAL OF THE ENGINEER.
5. THE CONTRACT PRICE, EACH, FOR SURVEY MARKER, TYPE 2 (SPECIAL) SHALL BE PAYMENT IN FULL FOR FURNISHING THE ALUMINUM TABLET AND FOR ALL LABOR AND MATERIAL REQUIRED TO SET THE MARKER IN PLACE, AS SPECIFIED, INCLUDING CORING THE NEW PAVEMENT.
6. ALL SURVEY MARKERS, TYPE 2 (SPECIAL) SHALL BE PLACED ± 1/4" (6 mm) BELOW THE FINAL SURFACE.

Note: All dimensions are in INCHES (millimeters) unless otherwise shown.

DESIGNER NOTE: BDE 58-8.02 "PLACE MARKERS AT THE PT'S AND PC'S OF ALL HORIZONTAL CURVES AND SPACE THEM ALONG TANGENTS SO THAT TWO MARKERS ARE ALWAYS INTERVISIBLE."

MODEL: I:\MODEL\MARKERS FILE NAME: p:\pub\mktomom.dwg PROJECT: I:\DOT\Documents\DOT - Office\Detailer: 5\Projects\05701F13\CADD\Detail\CADProcess\05701F13-Plt-Detail.dwg

USER NAME = suix	DESIGNED -	REVISED - 11/06
	DRAWN -	REVISED - 11/10
PLOT SCALE = 40,0000 * / in.	CHECKED -	REVISED -
PLOT DATE = 1/20/2021	DATE -	REVISED -

**STATE OF ILLINOIS
DEPARTMENT OF TRANSPORTATION**

SURVEY MARKERS TYPE 1 & 2 (SPECIAL)

SCALE: SHEET 1 OF 1 SHEETS STA. TO STA.

DISTRICT 5 DETAIL NO. XZ193AAA

F.A. RTE.	SECTION	COUNTY	TOTAL SHEETS	SHEET NO.
-	CM21-5016	CHAMPAIGN	21	21
F.A.S. 1512 & F.A.P. 836		CONTRACT NO. 70F13		
ILLINOIS FED. AID PROJECT				