

GENERAL NOTES

1. THE CONTRACTOR IS RESPONSIBLE FOR ALL DESIGN REQUIRED TO SUPPORT CONSTRUCTION EQUIPMENT USED IN CONSTRUCTING THIS PROJECT. SHORING AND RESHORING IS THE RESPONSIBILITY OF THE CONTRACTOR.
2. THE EXISTING PUMP STATION BUILDING SHALL REMAIN OPERATIONAL DURING CONSTRUCTION.
3. IT IS THE CONTRACTOR'S RESPONSIBILITY TO ENFORCE ALL APPLICABLE SAFETY CODES AND REGULATIONS DURING ALL PHASES OF CONSTRUCTION.
4. ALL CONTRACTORS ARE REQUIRED TO EXAMINE THE DRAWINGS AND SPECIAL PROVISIONS CAREFULLY. VISIT THE SITE AND FULLY INFORM THEMSELVES AS TO ALL EXISTING CONDITIONS AND LIMITATIONS, PRIOR TO AGREEING TO PERFORM THE WORK. FAILURE TO VISIT THE SITE AND FAMILIARIZE THEMSELVES WITH THE EXISTING CONDITIONS AND LIMITATIONS WILL IN NO WAY RELIEVE THE CONTRACTOR FROM FURNISHING ANY MATERIALS OR PERFORMING ANY WORK IN ACCORDANCE WITH THE DRAWINGS AND SPECIFICATIONS WITHOUT ADDITIONAL COST TO THE OWNER.
5. DURING CONSTRUCTION THE CONTRACTOR SHALL BE RESPONSIBLE FOR ANY DAMAGE THAT IS CAUSED TO THE EXISTING PUMP STATION BUILDING.
6. DRAWINGS ARE NOT TO SCALE.
7. THE DEPARTMENT RESERVES THE RIGHT TO NOTIFY THE CONTRACTOR TO CHANGE THE CONSTRUCTION SCHEDULE IF NEEDED TO ENSURE PROPER DEWATERING NEEDS FOR THE DEPARTMENT.
8. THE DEPARTMENT STRONGLY ENCOURAGES THE PRIME CONTRACTOR AND THEIR APPROVED SUB-CONTRACTORS TO HIRE MINORITY, WOMEN AND DISADVANTAGED INDIVIDUALS FROM ITS FEDERALLY FUNDED HIGHWAY CONSTRUCTION CAREERS TRAINING PROGRAM (HCCTP) TO HELP MEET WORKFORCE AND TRAINEE GOALS. THIS PROGRAM IS TRAINING MINORITIES, WOMEN AND DISADVANTAGED INDIVIDUALS IN HIGHWAY CONSTRUCTION RELATED SKILLS, E.G., MATH FOR THE TRADES, JOB READINESS, TECHNICAL SKILLS COURSEWORK (CARPENTRY, CONCRETE FLATWORK, BLUEPRINT READING, SITE PLANS, SITE WORK, TOOLS USE, ETC.) AND OSHA 10 HOUR CERTIFICATION TO PREPARE THEM FOR A CAREER IN THE HIGHWAY CONSTRUCTION TRADES. GRADUATES ARE WELL TRAINED AND READY TO BECOME PRODUCTIVE ENTRY LEVEL CONSTRUCTION WORKERS. CONTACT THE DISTRICT 8 EEO OFFICE AT 618-346-3360 AND/OR THE HCCTP COORDINATOR AT 618-874-6528 TO LEARN MORE ABOUT THE PROGRAM AND FOR ASSISTANCE IN MEETING WORKFORCE AND TRAINEE GOALS.

STRUCTURAL STEEL

1. DETAILING, FABRICATION AND ERECTION SHALL CONFORM TO THE AMERICAN INSTITUTE OF STEEL CONSTRUCTION (AISC) SPECIFICATIONS AND STANDARD CODE OF PRACTICE.
2. STEEL FABRICATION AND ERECTION SHALL FOLLOW THE OCCUPATIONAL SAFETY AND HEALTH ADMINISTRATION (OSHA) REQUIREMENTS.
3. STRUCTURAL STEEL:
 - a. STEEL ANGLES, RODS, AND PLATES - ASTM A36 (Fy=36 ksi)
 - b. WASHERS - ASTM F436
 - c. NUTS - ASTM A563
 - d. THREADED RODS - ASTM A36 (Fy=36 ksi)
4. ALL STEEL SHALL BE HOT DIPPED GALVANIZED.
5. REPAIR GALVANIZED SURFACES PER ASTM A780.
6. ALL STEEL SHALL BE FURNISHED IN ACCORDANCE WITH ARTICLE 505 OF THE STANDARD SPECIFICATIONS FOR ROAD AND BRIDGE CONSTRUCTION.
7. WATERSTOP SHALL BE A HIGH-PERFORMANCE, SWELLABLE, ONE-COMPONENT, POLYURETHANE-BASED WATERSTOP.



LOCATION MAP

D:\B\Files\180189\Work Order 06 - Phase II Pump Station Blocket Agreement\Craig's Farm Extension\Sheets\0876P27-sht-gmnotes.dgn

KLINGNER & ASSOCIATES, P.C.
 Engineers • Architects • Surveyors
 616 N.24TH ST. QUINCY, ILLINOIS 62301 217.223.3670
 STATE OF ILLINOIS DESIGN FIRM NO. 164-2738

USER NAME = oms	DESIGNED AMS	REVISED -
	DRAWN AMS	REVISED -
PLOT SCALE = 2:0' = 1" / 16'	CHECKED EBB	REVISED -
PLOT DATE = 1/5/2021	DATE 10/22/2020	REVISED -

**STATE OF ILLINOIS
DEPARTMENT OF TRANSPORTATION**

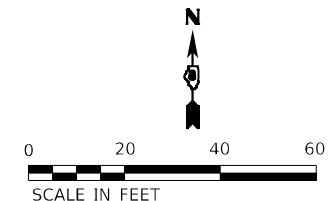
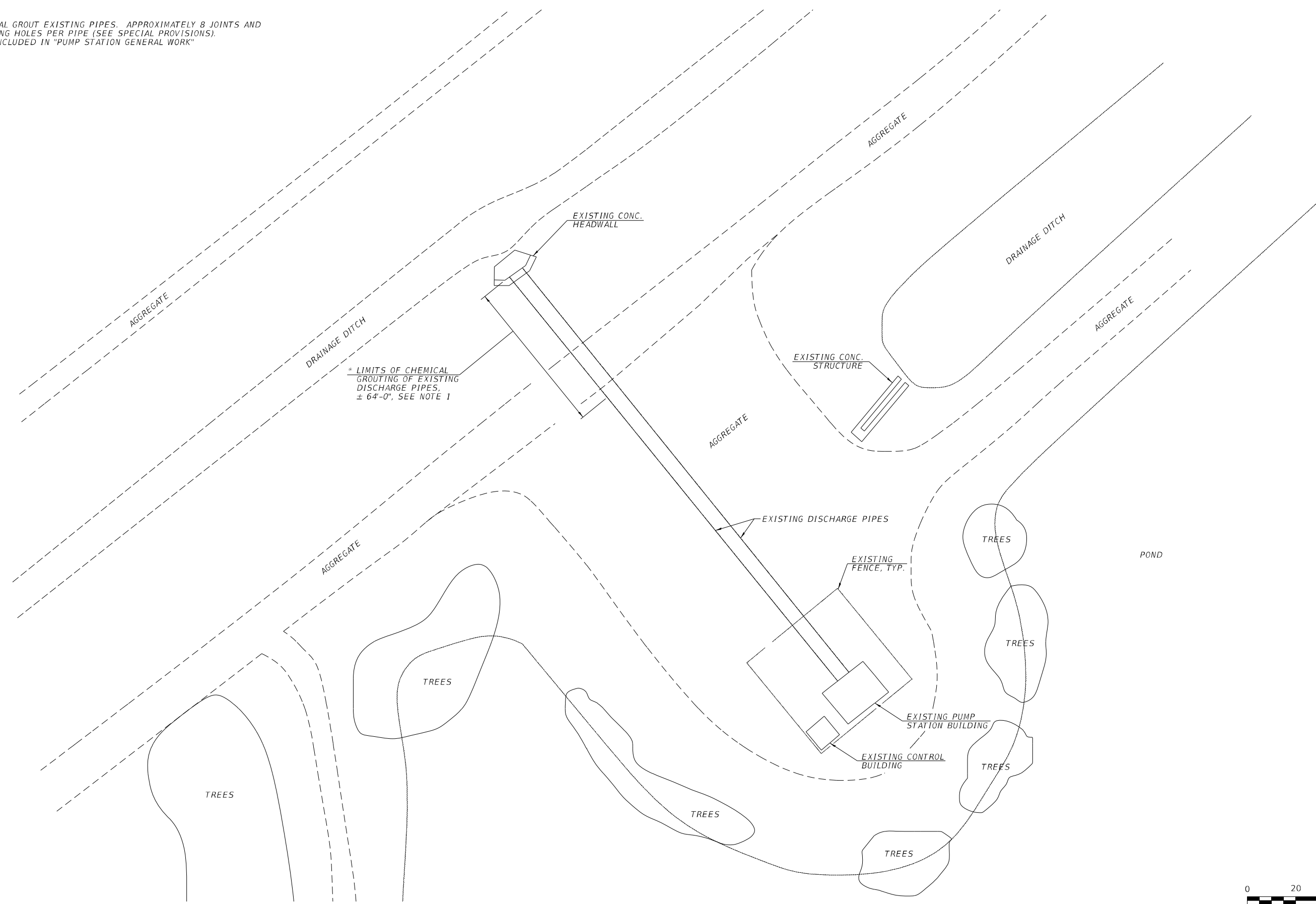
GENERAL NOTES

SCALE: NONE SHEET 1 OF 1 SHEETS STA. TO STA.

F.A.I. RTE.	SECTION	COUNTY	TOTAL SHEETS	SHEET NO.
255	60-8PS-2	MADISON	7	2
CONTRACT NO. 76P27				
ILLINOIS FED. AID PROJECT				

***NOTE**

1. CHEMICAL GROUT EXISTING PIPES. APPROXIMATELY 8 JOINTS AND 8 LIFTING HOLES PER PIPE (SEE SPECIAL PROVISIONS). COST INCLUDED IN "PUMP STATION GENERAL WORK"



D:\B\Files\180189\Work-Order-06 - Phase II Pump Station Blocket Agreement\Craig's Farm Extension\Sheets\0876P27-sht-SitePlan.dgn

KLINGNER & ASSOCIATES, P.C.
 Engineers • Architects • Surveyors
 616 N. 24TH ST. QUINCY, ILLINOIS 62301 217.223.3670
 STATE OF ILLINOIS DESIGN FIRM NO. 184-2738

USER NAME = oms	DESIGNED AMS	REVISED -
	DRAWN AMS	REVISED -
PLOT SCALE = 3/8"=1'-0"	CHECKED EBB	REVISED -
PLOT DATE = 1/4/2021	DATE 10/22/2020	REVISED -

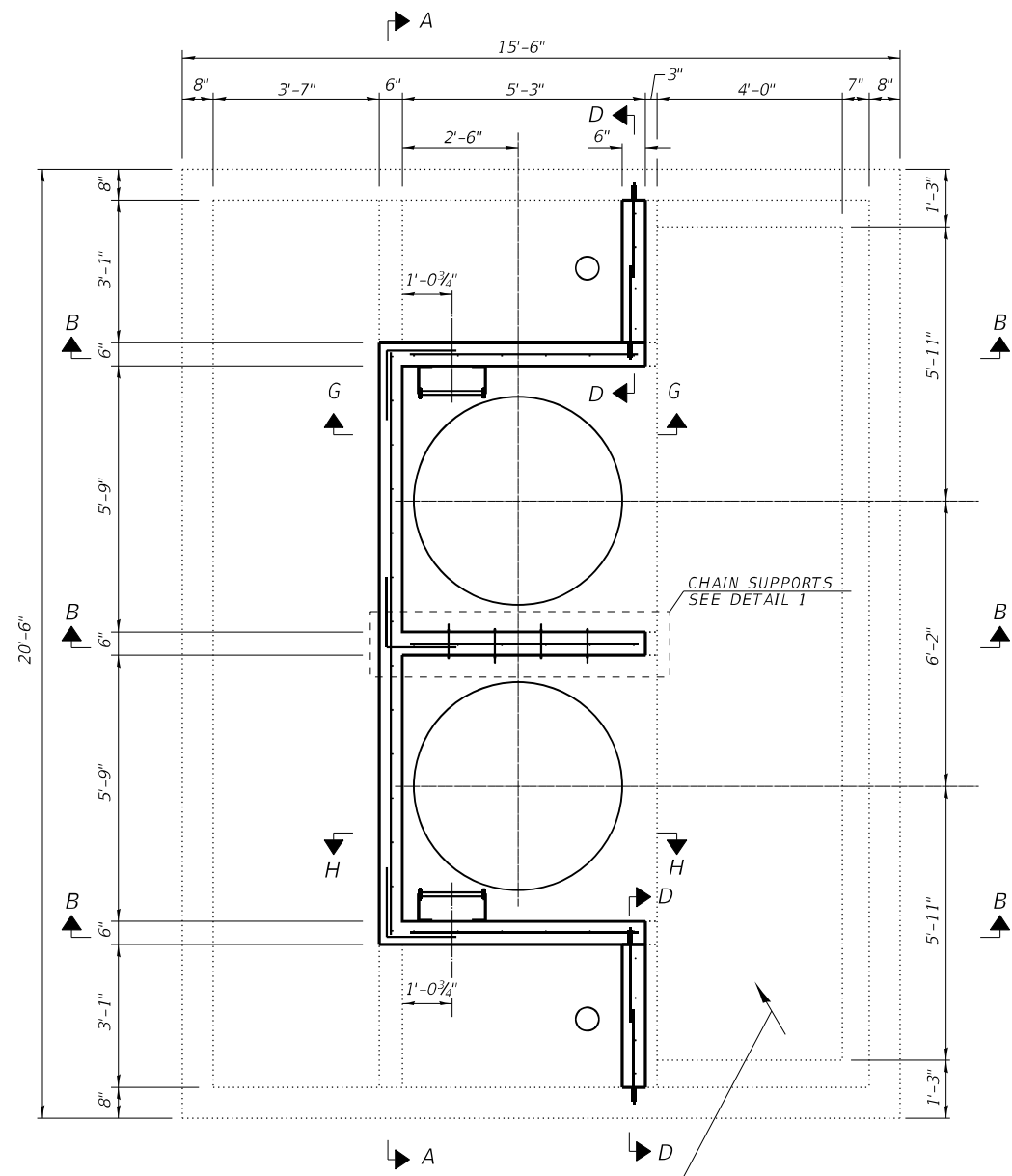
**STATE OF ILLINOIS
 DEPARTMENT OF TRANSPORTATION**

**GRAY'S FARM PUMP STATION
 SITE PLAN**

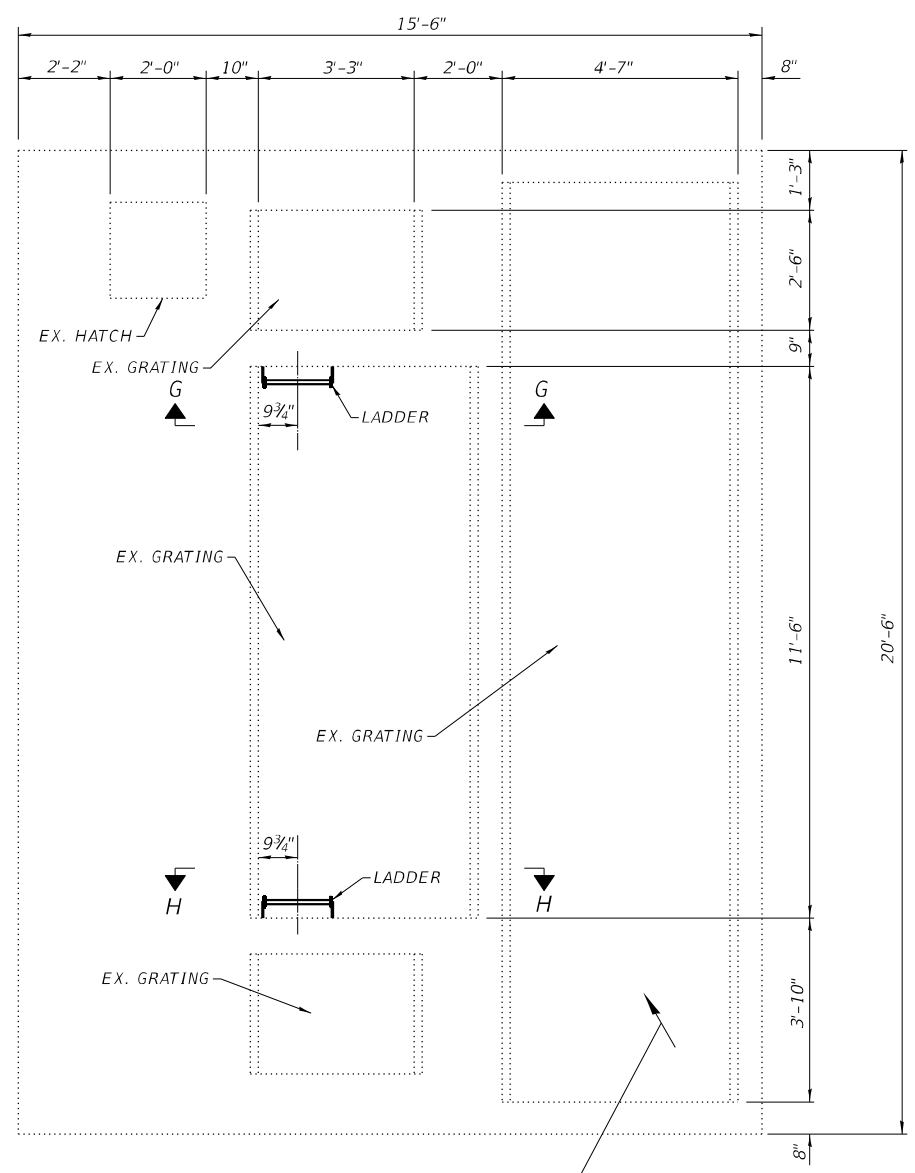
SCALE: 1"=20' SHEET 1 OF 1 SHEETS STA. TO STA.

F.A.I. RTE. 255	SECTION 60-8PS-2	COUNTY MADISON	TOTAL SHEETS 7	SHEET NO. 4
CONTRACT NO. 76P27				
ILLINOIS FED. AID PROJECT				

D:\B\Files\180189\Work-Order-06 - Phase II Pump Station Blocket Agreement\Gray's Farm Extension\Sheets\0876P27-sht-Plan.dgn



SEE SHEET 6 OF 6 FOR ISOMETRIC VIEW
PLAN AT EL. 422.50



SEE SHEET 6 OF 6 FOR ISOMETRIC VIEW
PLAN AT EL. 426.00

NOTES:
 1. SEE SHEET 5 OF 6 FOR SECTIONS A-A, B-B AND C-C AND FOR DETAIL 1.

KLINGNER & ASSOCIATES, P.C.
 Engineers • Architects • Surveyors
 616 N. 24TH ST. QUINCY, ILLINOIS 62301 217.223.3670
 STATE OF ILLINOIS DESIGN FIRM NO. 184-2738

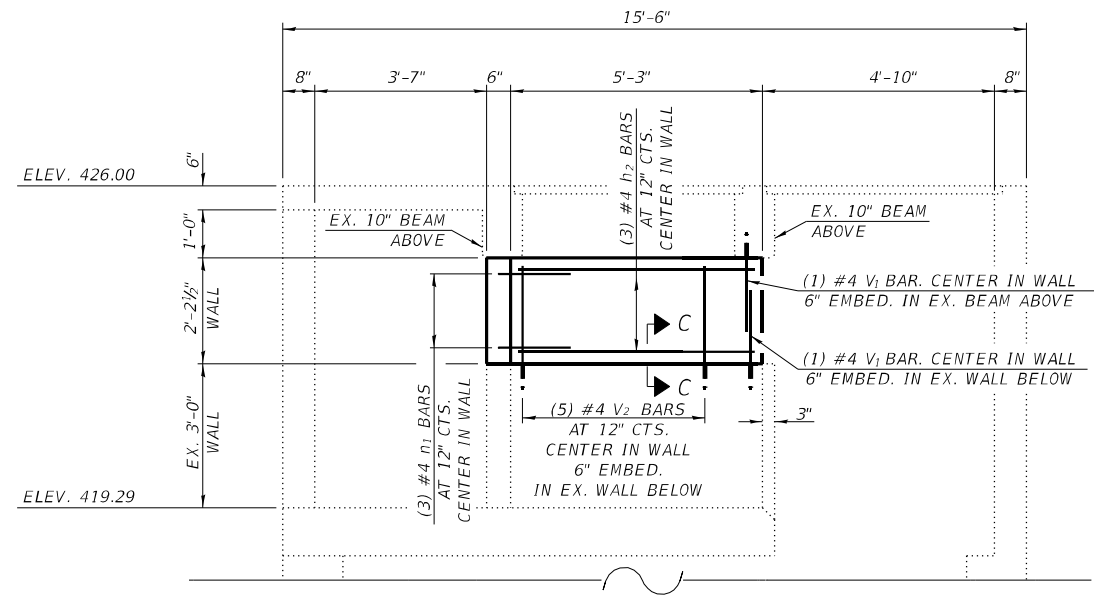
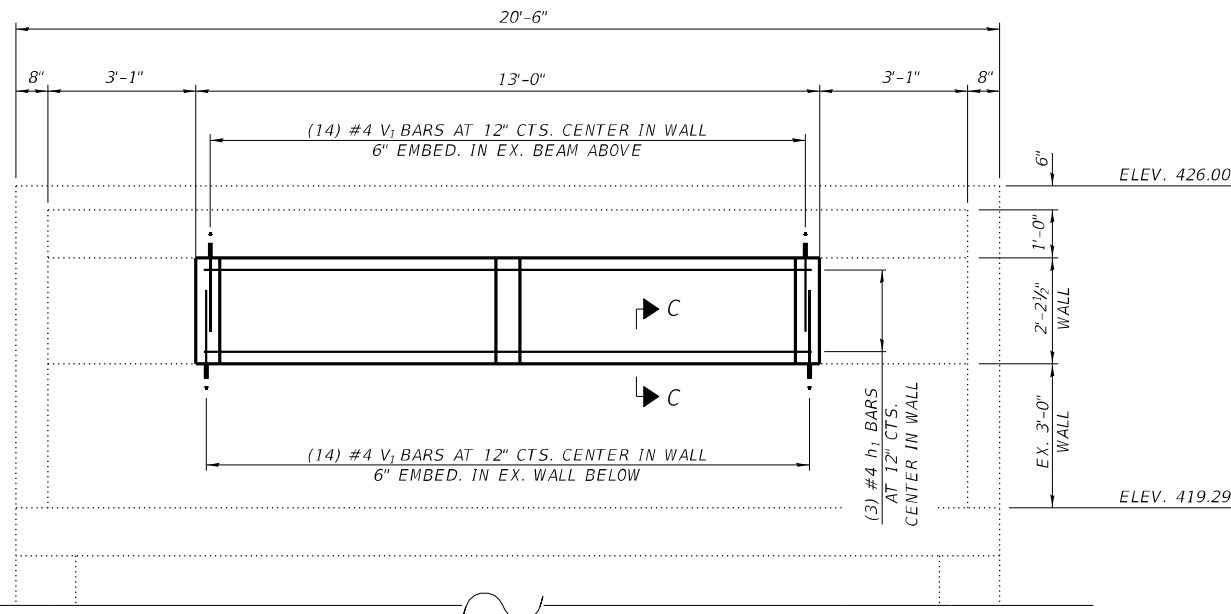
USER NAME = oms	DESIGNED AMS	REVISED -
DRAWN AMS	REVISIONS	REVISED -
PLOT SCALE = 4:8.0000 '1' = 1/4"	CHECKED EBB	REVISED -
PLOT DATE = 1/4/2021	DATE 10/22/2020	REVISED -

**STATE OF ILLINOIS
 DEPARTMENT OF TRANSPORTATION**

**GRAY'S FARM PUMP STATION
 PLANS AT EL. 422.50 AND 426.00**

SCALE: NONE SHEET 1 OF 1 SHEETS STA. TO STA.

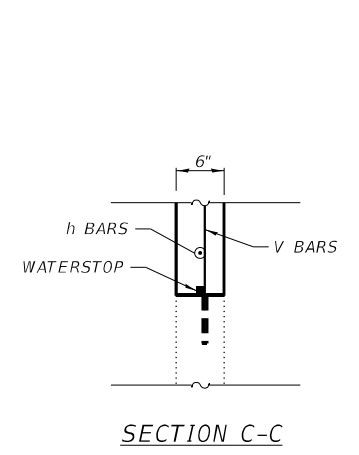
F.A.I. RTE.	SECTION	COUNTY	TOTAL SHEETS	SHEET NO.
255	60-8PS-2	MADISON	7	5
CONTRACT NO. 76P27				
ILLINOIS FED. AID PROJECT				



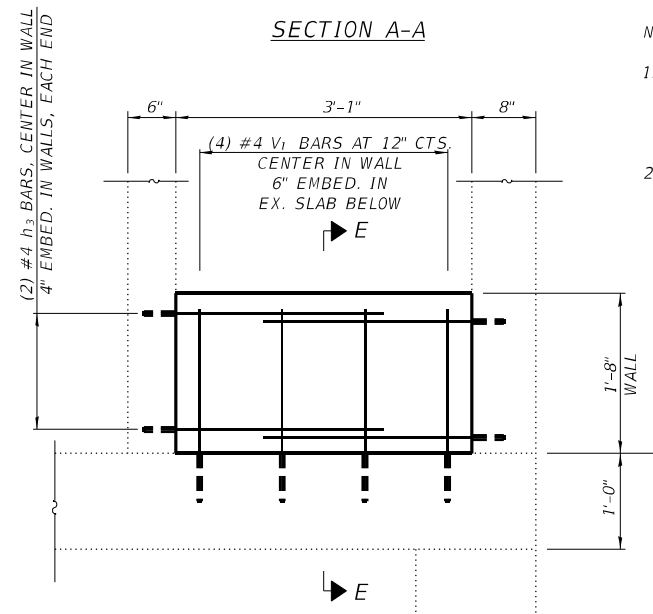
SECTION B-B
(3 LOCATIONS)

SECTION A-A

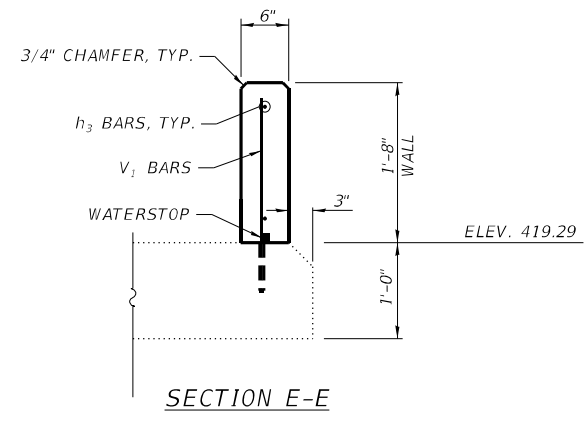
- NOTES:
1. WATERSTOP SHALL BE A HIGH-PERFORMANCE, SWELLABLE, ONE-COMPONENT, POLYURETHAN-BASED WATERSTOP. COST OF WATERSTOP SHALL BE INCLUDED IN THE COST OF "CONCRETE STRUCTURES".
 2. COST OF CHAIN SUPPORTS, LADDERS AND LADDER SUPPORTS SHALL BE INCLUDED IN THE COST OF "FURNISHING AND ERECTING STRUCTURAL STEEL".



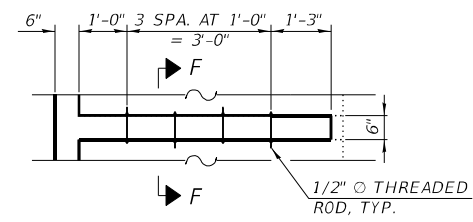
SECTION C-C



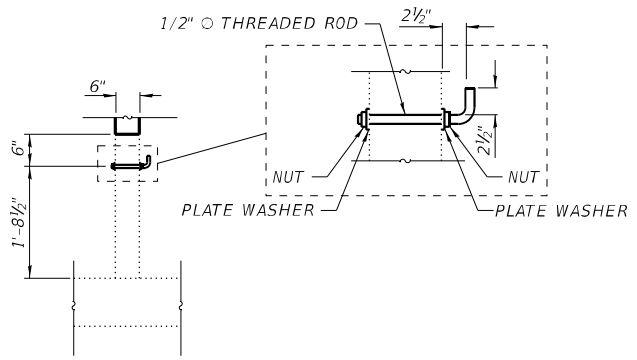
SECTION D-D
(2 LOCATIONS)



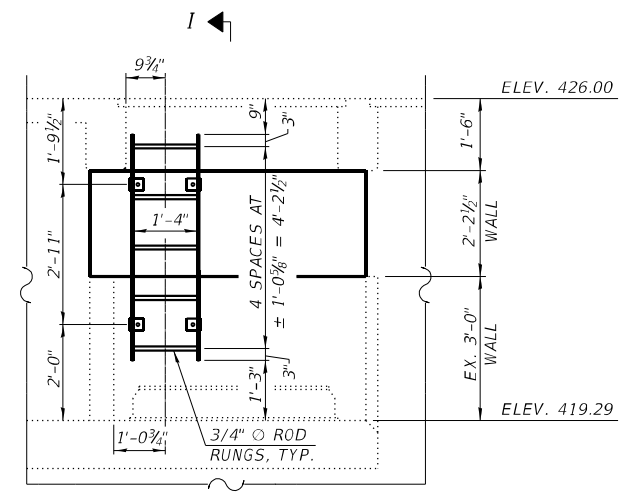
SECTION E-E



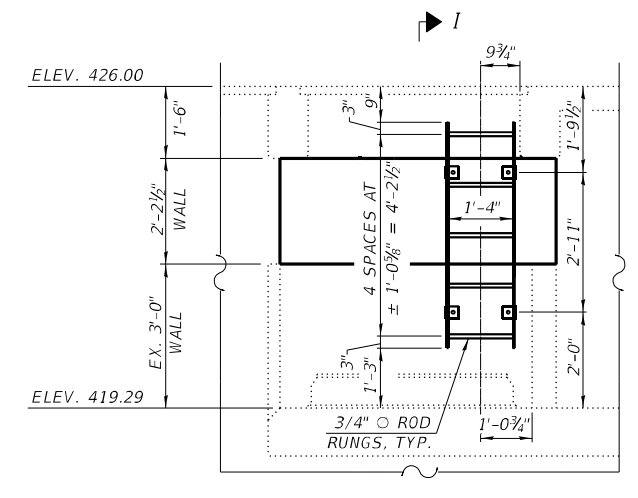
DETAIL 1 - CHAIN SUPPORT
4 TOTAL - (2 PER WALL)



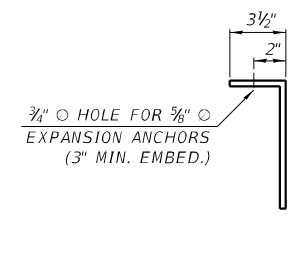
SECTION F-F



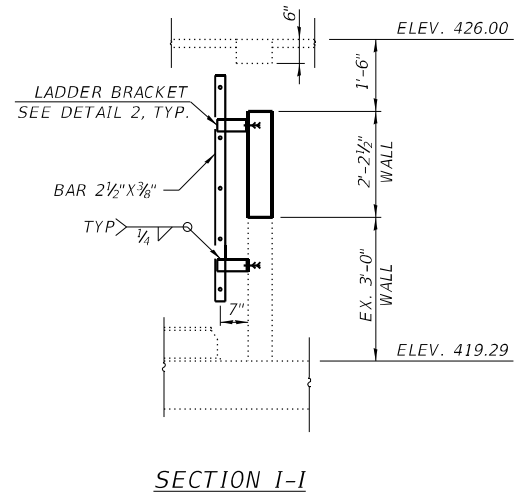
SECTION G-G



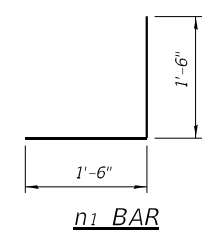
SECTION H-H



DETAIL 2



SECTION I-I



n1 BAR

BILL OF MATERIAL

Bar	No.	Size	Length	Shape	
h1	3	#4	12'-8"	—	
h2	9	#4	4'-11"	—	
h3	8	#4	2'-6"	—	
n1	9	#4	3'-0"	└	
v1	42	#4	2'-0"	—	
v2	15	#4	2'-6"	—	
CONCRETE STRUCTURES				Cu. Yd.	1.4
REINFORCEMENT BARS				Lbs.	170
FURNISHING AND ERECTING STRUCTURAL STEEL				Lbs.	120

D:\B\F\180198\Work-Order-06 - Phase II Pump Station Blocket Agreement\Draw's Form Extension\Sheets\0876P27-sht-Details.dgn

KLINGNER & ASSOCIATES, P.C.
Engineers • Architects • Surveyors
616 N. 24TH ST. QUINCY, ILLINOIS 62301 217.223.3670
STATE OF ILLINOIS DESIGN FIRM NO. 184-2738

USER NAME = oms	DESIGNED AMS	REVISED -
PLOT SCALE = 4:8.0000' 1" / 11"	DRAWN AMS	REVISED -
PLOT DATE = 1/4/2021	CHECKED EBB	REVISED -
	DATE 10/22/2020	REVISED -

STATE OF ILLINOIS
DEPARTMENT OF TRANSPORTATION

GRAY'S FARM PUMP STATION
WALL REINFORCEMENT AND DETAILS

SCALE: NONE SHEET 1 OF 1 SHEETS STA. TO STA.

F.A.I. RTE.	SECTION	COUNTY	TOTAL SHEETS	SHEET NO.
255	60-8PS-2	MADISON	7	6
CONTRACT NO. 76P27				
ILLINOIS FED. AID PROJECT				

PUMP BAY DIVIDER WALLS NOT SHOWN FOR CLARITY

FIELD VERIFY EXISTING FLANGE DIMENSIONS. DRILL HOLES IN EXISTING FLANGE TO MATCH PROPOSED PUMP TUBE EXTENSION FLANGE

REMOVE EXISTING DISCHARGE ELBOWS AND SALVAGE FOR RE-USE

REMOVE EXISTING DISCHARGE ELBOWS AND SALVAGE FOR RE-USE

SEE DETAIL - SUMP PUMP DISCHARGE PIPE EXTENSION

RE-INSTALL SALVAGED DISCHARGE PIPE ELBOWS. FINAL DISCHARGE ELBOW SHALL BE ORIENTED DOWN

SEE DETAIL - PROPELLER PUMP TUBE EXTENSION

INSTALL PIPE SPOOL PIECE TO RAISE ELEVATION OF SUMP PUMP DISCHARGE

INSTALL PUMP TUBE EXTENSION ON TOP OF EXISTING PUMP TUBE FLANGE

SEE DETAIL - SUMP PUMP DISCHARGE PIPE EXTENSION

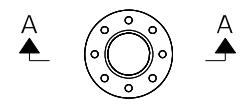
INSTALL PIPE SPOOL PIECE TO RAISE ELEVATION OF SUMP PUMP DISCHARGE

RE-INSTALL SALVAGED DISCHARGE PIPE ELBOWS. FINAL DISCHARGE ELBOW SHALL BE ORIENTED DOWN

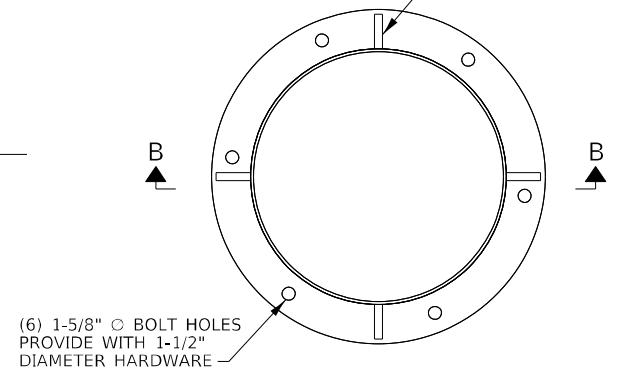
STEEL LIFTING LUG, TYP. MINIMUM CAPACITY = 500 lb (4 LOCATIONS)

EXISTING PIPING - ISOMETRIC VIEW
N.T.S.

PROPOSED PIPING - ISOMETRIC VIEW
N.T.S.

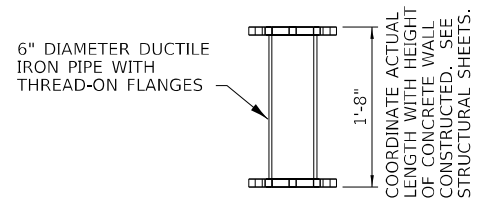


PLAN



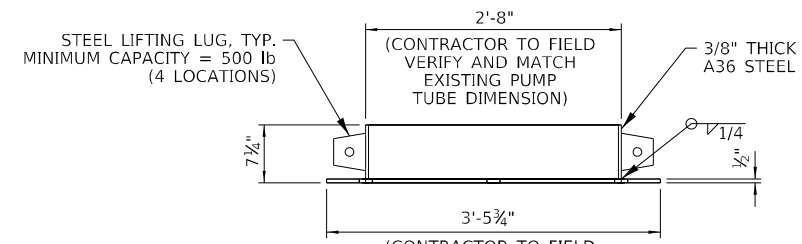
PLAN

(6) 1-5/8" Ø BOLT HOLES PROVIDE WITH 1-1/2" DIAMETER HARDWARE



SECTION A-A

SUMP PUMP DISCHARGE PIPE EXTENSION DETAIL
N.T.S.



SECTION B-B

PROPELLER PUMP TUBE EXTENSION DETAIL
N.T.S.

GENERAL NOTES:

1. ALL ASSEMBLY HARDWARE (BOLTS, NUTS, WASHERS, ETC.) TO BE 304 STAINLESS STEEL.
2. PROPELLER PUMP TUBE EXTENSION TO BE FABRICATED FROM A36 CARBON STEEL. EXTENSION TO BE POWDER COATED FOLLOWING ASSEMBLY (BLACK).
3. INSTALL 1/8" THICK STYRENE-BUTADIENE (RED RUBBER) GASKET BETWEEN ALL FLANGE CONNECTIONS. COST INCLUDED IN "PUMP STATION GENERAL WORK".
4. SUMP PUMP DISCHARGE PIPE EXTENSION TO BE FABRICATED FROM DUCTILE IRON PIPE MEETING AWWA C151 REQUIREMENTS.
5. SUMP PUMP DISCHARGE PIPE EXTENSIONS AND PROPELLER PUMP TUBE EXTENSIONS AND CORRESPONDING HARDWARE WILL BE PAID AS "PUMP STATION GENERAL WORK".

D:\B\Files\180189\Work-Order-06 - Phase II Pump Station Blocket Agreement\Crui's Farm Extension\Sheets\0876P27-sht-Details.dgn

KLINGNER & ASSOCIATES, P.C.
Engineers • Architects • Surveyors
616 N. 24TH ST. QUINCY, ILLINOIS 62301 217.223.3670
STATE OF ILLINOIS DESIGN FIRM NO. 164-2738

USER NAME = oms	DESIGNED JJN	REVISED -
DRAWN JLD	REVISED -	
CHECKED AMS	REVISED -	
DATE 10/22/2020	REVISED -	

PLLOT SCALE = 4:8" = 1'-0"	
PLLOT DATE = 1/4/2021	

**STATE OF ILLINOIS
DEPARTMENT OF TRANSPORTATION**

**GRAY'S FARM PUMP STATION
PROPELLER PUMP AND SUMP PUMP MODIFICATIONS**

SCALE: NONE SHEET 1 OF 1 SHEETS STA. TO STA.

F.A.I. RTE. 255	SECTION 60-8PS-2	COUNTY MADISON	TOTAL SHEETS 7	SHEET NO. 7
CONTRACT NO. 76P27				
ILLINOIS FED. AID PROJECT				