

SHT NO.	DESCRIPTION
1	COVER SHEET
2	SIGNATURE SHEET
3	GENERAL NOTES & COMMITMENTS
4-6	SUMMARY OF QUANTITIES
7-10	TYPICAL SECTIONS
11-12	SCHEDULE OF QUANTITIES
13	SURVEY CONTROL INFORMATION
14	GEOPAK ELEMENT IDENTIFICATION
15	PLAN
16	REMOVAL PLAN SHEETS
17-18	STAGE CONSTRUCTION & MARKED DETOUR PLANS
19	PCC JOINT DETAILS & LAYOUT
20	PAVEMENT MARKINGS
21	DETAILS
22-23	SIDEWALK DETAILS

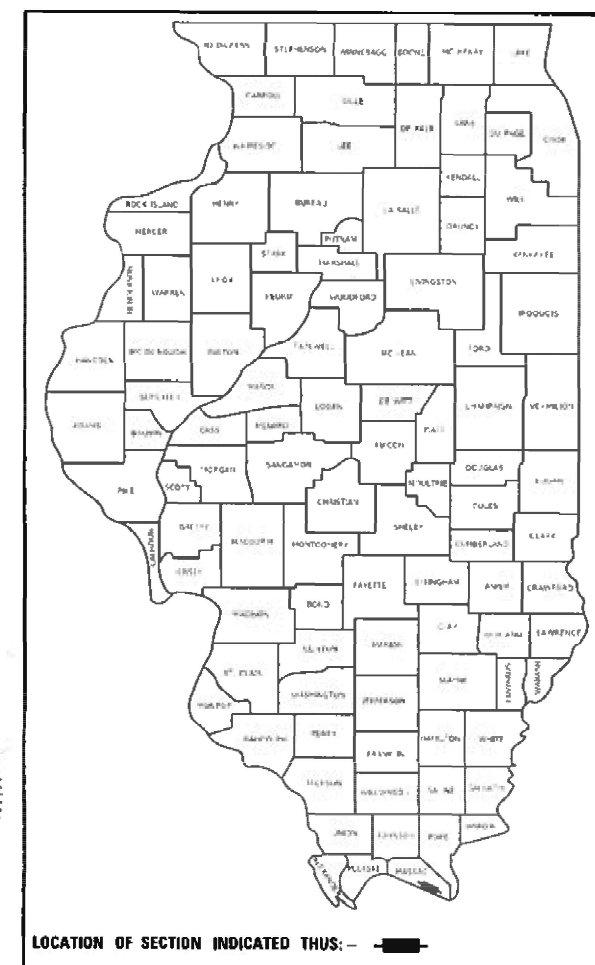
STATE OF ILLINOIS
DEPARTMENT OF TRANSPORTATION

**PROPOSED
HIGHWAY PLANS**

FAU ROUTE 9760 /9771 (US 45)
SECTION 41N-1
PROJECT STP-62RZ(141)
PAVEMENT REPLACEMENT
MASSAC COUNTY

F.A.U. RTE.	SECTION	COUNTY	TOTAL SHEETS	SHEET NO.
4	41N-1	MASSAC	23	1
ILLINOIS CONTRACT NO. 78837				

D-99-013-21

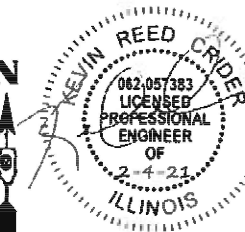
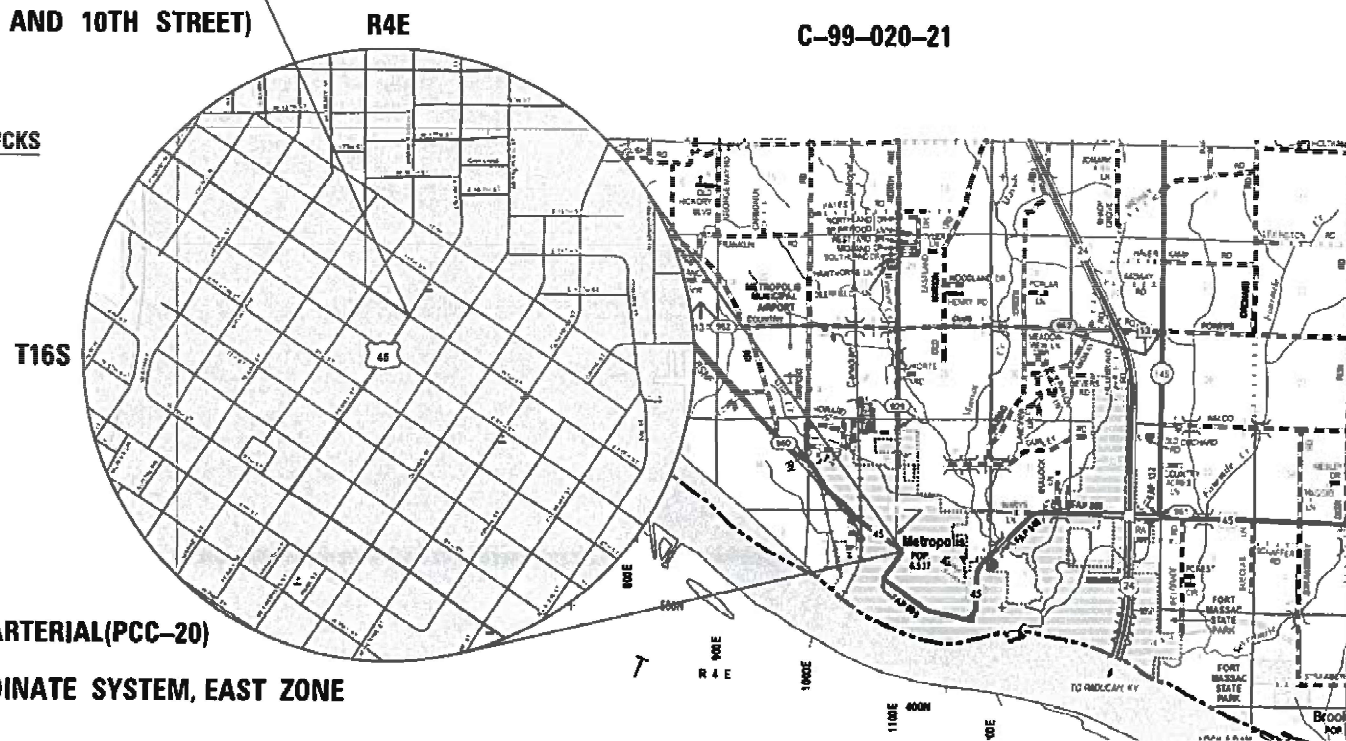


PROJECT LOCATION
INTERSECTION OF US 45
(FERRY STREET AND 10TH STREET)

TRAFFIC DATA

APPROACH	2019 ADT	2019 %TRUCKS
US 45 WEST LEG	7400	2.4
US 45 SOUTH LEG	5200	3.1

**TOWNSHIPS
METROPOLIS**



DESIGN DESIGNATION : 680(21)MINOR ARTERIAL(PCC-20)
COORDINATE SYSTEM : ILLINOIS COORDINATE SYSTEM, EAST ZONE
POSTED SPEED : 35 MPH

J.U.L.I.E.
JOINT UTILITY LOCATION INFORMATION FOR EXCAVATION
1-800-892-0123
OR 811

PROJECT ENGINEER: VALERIE ROLLA, P.E. (618)351-5214
PROJECT DESIGNER:

CONTRACT NO. 78837



BACON | FARMER | WORKMAN
ENGINEERING & TESTING, INC.

403 NORTH COURT STREET MARION, IL 62959 PHONE - 618.987.9180
421 S. GRAND AVENUE WEST SPRINGFIELD, IL 62704 PHONE - 217.679.8254
907 ARROW ROAD, SUITE 2 CHAMPAIGN, IL 61821 PHONE - 217.530.4283

GROSS LENGTH = 92.00 FT. = 0.017 MILES
NET LENGTH = 92.00 FT. = 0.017 MILES

STATE OF ILLINOIS
DEPARTMENT OF TRANSPORTATION

SUBMITTED 02-10-2021
[Signature]
REGION FIVE ENGINEER

March 19, 2021
[Signature]
ENGINEER OF DESIGN AND ENVIRONMENT

March 19, 2021
[Signature]
DIRECTOR OF HIGHWAYS PROJECT IMPLEMENTATION

**PRINTED BY THE AUTHORITY
OF THE STATE OF ILLINOIS**

MODEL: D:\NAME
FILE: NAME_0078837.dwg

USER NAME = spant	DESIGNED -	REVISED -
PLCT SCALE = 30.0000' / 1"	DRAWN -	REVISED -
PLCT DATE = 2/3/2021 - 3:19:12 PM	CHECKED -	REVISED -
	DATE -	REVISED -

**STATE OF ILLINOIS
DEPARTMENT OF TRANSPORTATION**

Prepared By: Charles Stein
DISTRICT STUDIES & PLANS ENGINEER

Examined By: _____
DISTRICT LAND ACQUISITION ENGINEER

Examined By: Cam Nelan
DISTRICT PROGRAM DEVELOPMENT ENGINEER

Examined By: Karl Kelly
DISTRICT OPERATIONS ENGINEER

Examined By: KR
DISTRICT PROJECT IMPLEMENTATION ENGINEER

Examined By: Daryl J. Hubert
DISTRICT CONSTRUCTION ENGINEER

Examined By: R. C. C.
DISTRICT MATERIALS ENGINEER

SIGNATURE SHEET				F.A.U. RTE.	SECTION	COUNTY	TOTAL SHEETS	SHEET NO.
SCALE:	SHEET	OF	SHEETS	STA.	TO STA.	ILLINOIS FED. AID PROJECT	23	2
						MASSAC	CONTRACT NO. 78837	

LIST OF HIGHWAY STANDARDS

- 000001-08 STANDARD SYMBOLS, ABBREVIATIONS AND PATTERNS
- 001001-02 AREAS OF REINFORCEMENT BARS
- 001006 DECIMAL OF AN INCH AND OF A FOOT
- 420001-09 PAVEMENT JOINTS
- 420101-06 24' (7.2 m) JOINTED PCC PAVEMENT
- 424001-11 PERPENDICULAR CURB RAMPS FOR SIDEWALKS
- 602306-03 INLET - TYPE B
- 604006-05 FRAME AND GRATE TYPE 3
- 606001-07 CONCRETE CURB TYPE B AND COMBINATION CONCRETE CURB AND GUTTER
- 701501-06 URBAN LANE CLOSURE, 2L, 2W, UNDIVIDED
- 701701-10 URBAN LANE CLOSURE, MULTILANE INTERSECTION
- 701801-06 SIDEWALK, CORNER OR CROSSWALK CLOSURE
- 701901-08 TRAFFIC CONTROL DEVICES
- 780001-05 TYPICAL PAVEMENT MARKINGS
- B.L.R. 21-9 TYPICAL APPLICATION OF TRAFFIC CONTROL DEVICES FOR CONSTRUCTION ON RURAL LOCAL HIGHWAYS
- 602401-07 PRECAST MANHOLE TYPE A 4'

COMMITMENTS

NONE

GENERAL NOTES

FACTORS USED FOR ESTIMATING PLAN QUANTITIES ARE AS FOLLOWS AND SHALL NOT BE USED FOR THE BASIS OF FINAL QUANTITIES

ALL AGGREGATE	2.05	TONS / CU YD
---------------	------	--------------

CONNECTING OF NEW OR EXISTING STORM SEWER TO NEW OR EXISTING INLETS OR MANHOLES SHALL BE MADE IN A MANNER WHICH RESULTS IN A NEAT AND WATERTIGHT JOINTS. WHEN PLACED THROUGH THE WALL OF AN INLET OR MANHOLE, STORM SEWER PIPE SHALL BE PLACED OR CUT FLUSH WITH THE FACE OF THE WALL AND DRESSED WITH MORTAR TO PROVIDE A SMOOTH ROUNDED OR BEVELED EDGE. THIS WORK WILL NOT BE PAID FOR SEPARATELY, BUT SHALL BE CONSIDERED AS INCLUDED IN THE CONTRACT UNIT PRICES OF THE STORM SEWERS OR STRUCTURES INVOLVED.

AT ALL LOCATIONS WHERE THE PROPOSED HOT MIX ASPHALT OR CONCRETE PAVEMENT JOINS AN EXISTING HOT MIX ASPHALT OR CONCRETE PAVEMENT, A FULL DEPTH SAWED JOINT SHALL BE CONSTRUCTED. THE COST OF THIS JOINT WILL BE INCLUDED IN THE COST OF THE TYPE OF PAVEMENT BEING CONSTRUCTED.

REV. - MS

MODEL: Default
FILE NAME: ...D:\97837-4h-Cemmod.dgn

USER NAME = spool	DESIGNED -	REVISED -	STATE OF ILLINOIS DEPARTMENT OF TRANSPORTATION	GENERAL NOTES, HIGHWAYS STANDARDS, COMMITMENTS	F.A.U. RTE.	SECTION	COUNTY	TOTAL SHEETS	SHEET NO.	
	DRAWN -	REVISED -			*	41N-1	MASSAC	23	3	
PLOT SCALE = 50.0000' / in.	CHECKED -	REVISED -			CONTRACT NO. 78837					
PLOT DATE = 2/8/2021 - 9:04:58 AM	DATE -	REVISED -			SCALE:	SHEET	OF	SHEETS	STA.	TO STA.
					ILLINOIS		FED. AID PROJECT			

* F.A.U. ROUTES 9760 & 9771

CODE NO.	ITEM	UNIT	TOTAL QUANTITY	CONSTR. CODE	
				80% FEDERAL 20% STATE ROADWAY	0005 URBAN
20800150	TRENCH BACKFILL	CJ YD	6	6	
42000501	PORTLAND CEMENT CONCRETE PAVEMENT 10" (JOINTED)	SQ YD	736	736	
42001300	PROTECTIVE COAT	SQ YD	736	736	
42400100	PORTLAND CEMENT CONCRETE SIDEWALK 4 INCH	SQ FT	391	391	
42400800	DETECTABLE WARNINGS	SQ FT	36	36	
44000100	PAVEMENT REMOVAL	SQ YD	762	762	
44000500	COMBINATION CURB AND GUTTER REMOVAL	FOOT	57	57	
44000600	SIDEWALK REMOVAL	SQ FT	220	220	
44201299	DOWEL BARS 1 1/2"	EACH	467	467	
44213204	TIE BARS 3/4"	EACH	171	171	
550A0380	STORM SEWERS, CLASS A, TYPE 2 18"	FOOT	26	26	
55100900	STORM SEWER REMOVAL 18"	FOOT	6.5	6.5	
60218500	MANHOLES, TYPE A, 4'-DIAMETER, TYPE 3 FRAME AND GRATE	EACH	1	1	
60240220	INLETS, TYPE B, TYPE 3 FRAME AND GRATE	EACH	1	1	

MODEL: D:\draft...
 FILE NAME: ...CAD_Sheet10978837-1h-500.dwg

USER NAME = spool	DESIGNED -	REVISED -
	DRAWN -	REVISED -
PLOT SCALE = 50.0000 ' / in.	CHECKED -	REVISED -
PLOT DATE = 2/3/2021 - 3:19:44 PM	DATE -	REVISED -

**STATE OF ILLINOIS
DEPARTMENT OF TRANSPORTATION**

SUMMARY OF QUANTITIES

SCALE: SHEET OF SHEETS STA. TO STA.

F.A.U. RTE.	SECTION	COUNTY	TOTAL SHEETS	SHEET NO.
*	41N-1	MASSAC	23	4
			CONTRACT NO. 78837	

ILLINOIS FED. AID PROJECT

MODEL: Default
FILE NAME: ...CAD_Sheet0978837.dwg

CODE NO.	ITEM	UNIT	TOTAL QUANTITY	CONSTR. CODE	
				80% FEDERAL 20% STATE	ROADWAY 0005 URBAN
60500060	REMOVING INLETS	EACH	1		1
60603800	COMBINATION CONCRETE CURB AND GUTTER, TYPE B-6.12	FOOT	67		67
67000400	ENGINEER'S FIELD OFFICE, TYPE A	CAL MO	1		1
67100100	MOBILIZATION	L SUM	1		1
70107025	CHANGEABLE MESSAGE SIGN	CAL DAY	28		28
70300100	SHORT TERM PAVEMENT MARKING	FOOT	833		833
70300150	SHORT TERM PAVEMENT MARKING REMOVAL	SQ FT	651.5		651.5
70300220	TEMPORARY PAVEMENT MARKING - LINE 4"	FOOT	63		63
70300240	TEMPORARY PAVEMENT MARKING - LINE 6"	FOOT	413		413
70300260	TEMPORARY PAVEMENT MARKING - LINE 12"	FOOT	285		285
70300280	TEMPORARY PAVEMENT MARKING - LINE 24"	FOOT	67		67
* 78008210	POLYUREA PAVEMENT MARKING TYPE I - LINE 4"	FOOT	63		63
* 78008230	POLYUREA PAVEMENT MARKING TYPE I - LINE 6"	FOOT	413		413
* 78008250	POLYUREA PAVEMENT MARKING TYPE I - LINE 12"	FOOT	285		285
* 78008270	POLYUREA PAVEMENT MARKING TYPE I - LINE 24"	FOOT	67		67

* SPECIALTY ITEM

REV. - MS

USER NAME = spool	DESIGNED -	REVISED -
	DRAWN -	REVISED -
PLOT SCALE = 50.0000' / in.	CHECKED -	REVISED -
PLOT DATE = 2/3/2021 - 3:20:00 PM	DATE -	REVISED -

**STATE OF ILLINOIS
DEPARTMENT OF TRANSPORTATION**

SUMMARY OF QUANTITIES

SCALE: SHEET OF SHEETS STA. TO STA.

F.A.U. RTE.	SECTION	COUNTY	TOTAL SHEETS	SHEET NO.
*	41N-1	MASSAC	23	5
			CONTRACT NO. 78837	

ILLINOIS FED. AID PROJECT

* F.A.U. ROUTES 9760 & 9771

MODEL: Default
 FILE NAME: ...CAD Sheets\078837.sht-500.dgn

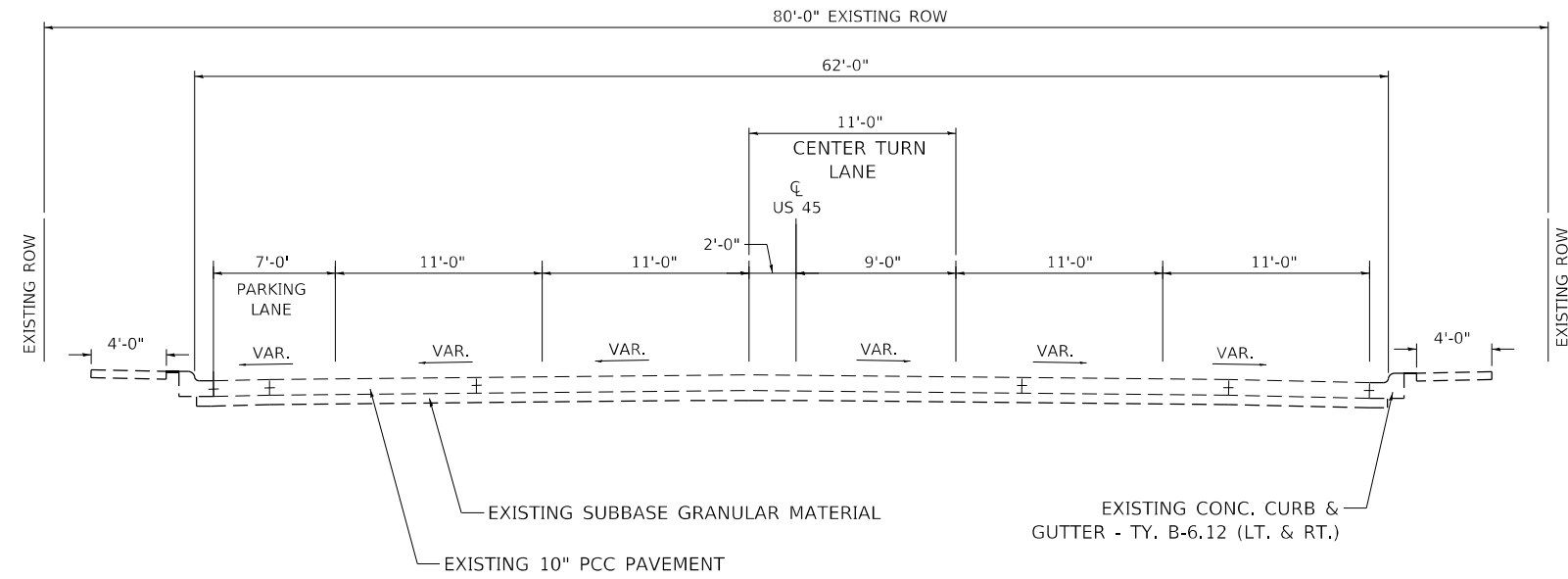
CODE NO.	ITEM	UNIT	TOTAL QUANTITY	CONSTR. CODE	
				80% FEDERAL 20% STATE	ROADWAY
				0005	URBAN
78300201	PAVEMENT MARKING REMOVAL - GRINDING	SQ FT	33	33	
X7010216	TRAFFIC CONTROL AND PROTECTION, (SPECIAL)	L SUM	1	1	
X7030005	TEMPORARY PAVEMENT MARKING REMOVAL	SQ FT	833	833	
* X7830070	GROOVING FOR RECESSED PAVEMENT MARKING 5"	FOOT	63	63	
* X7830074	GROOVING FOR RECESSED PAVEMENT MARKING 7"	FOOT	413	413	
* X7830078	GROOVING FOR RECESSED PAVEMENT MARKING 13"	FOOT	285	285	
Z0013798	CONSTRUCTION LAYOUT	L SUM	1	1	
* X7830090	GROOVING FOR RECESSED PAVEMENT MARKING 25"	FOOT	67	67	

* SPECIALTY ITEM

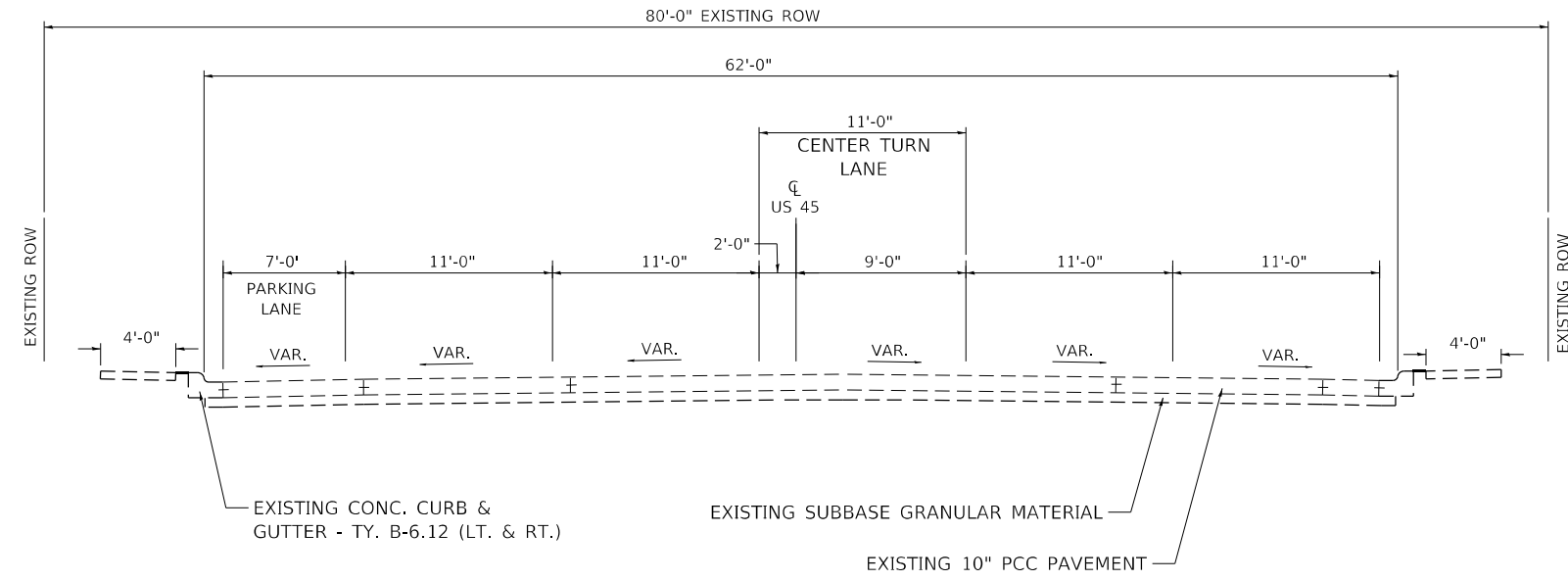
REV. - MS

USER NAME = spool	DESIGNED -	REVISED -	STATE OF ILLINOIS DEPARTMENT OF TRANSPORTATION	SUMMARY OF QUANTITIES				F.A. RTE.	SECTION	COUNTY	TOTAL SHEETS	SHEET NO.
PLOT SCALE = 50.0000' / in.	DRAWN -	REVISED -						* 41N-1	MASSAC	23	6	
PLOT DATE = 2/3/2021 - 3:20:16 PM	CHECKED -	REVISED -		SCALE:	SHEET	OF	SHEETS	STA.	TO STA.	ILLINOIS FED. AID PROJECT		
	DATE -	REVISED -		CONTRACT NO. 78837								

* F.A.U. ROUTES 9760 & 9771



**EXISTING TYPICAL SECTION
US 45
(WEST SIDE OF INTERSECTION)**
STA. 1137+21.30 TO STA. 1137+67.95



**EXISTING TYPICAL SECTION
US 45
(SOUTH SIDE OF INTERSECTION)**
STA. 1137+67.95 TO STA. 1138+15.37

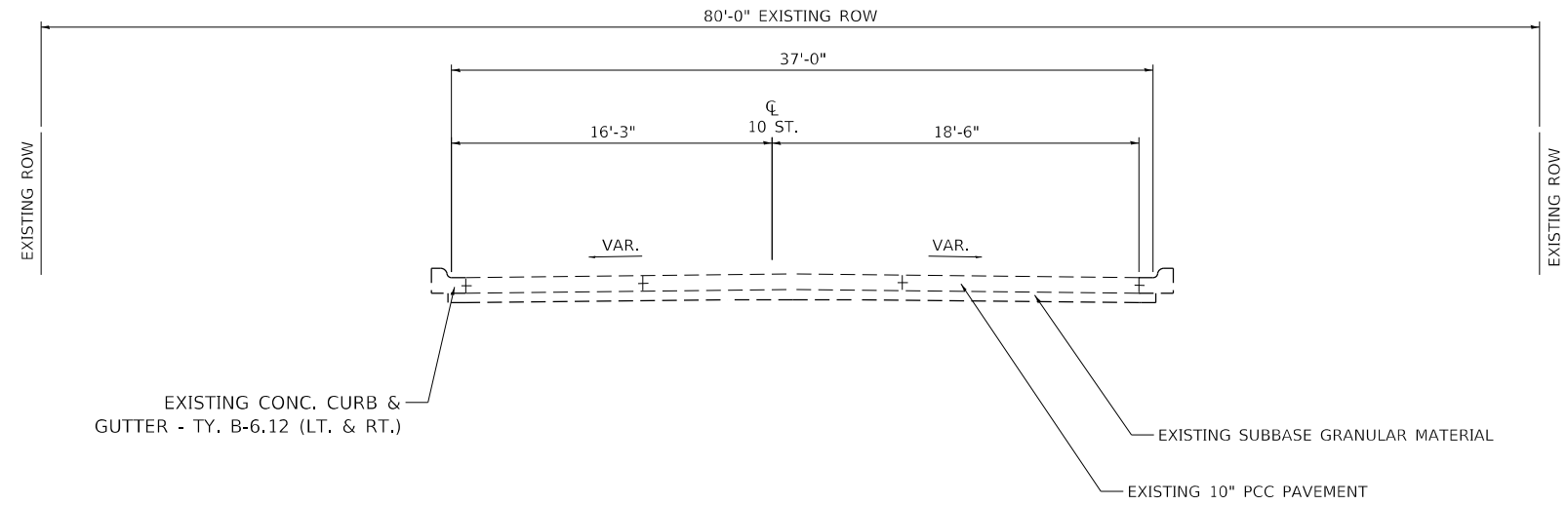
MODEL: D:\m\h... FILE NAME: ..._0978837-5h-3-Typical.dgn

USER NAME = spool	DESIGNED -	REVISED -
	DRAWN -	REVISED -
PLOT SCALE = 5.0000' / in.	CHECKED -	REVISED -
PLOT DATE = 2/3/2021 - 3:20:51 PM	DATE -	REVISED -

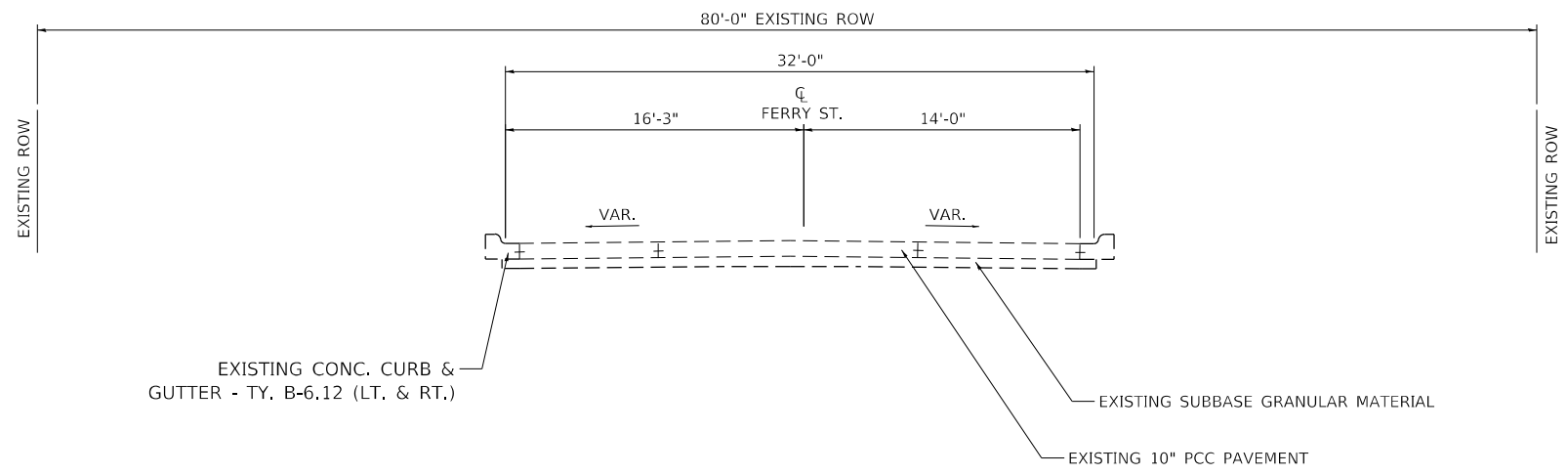
**STATE OF ILLINOIS
DEPARTMENT OF TRANSPORTATION**

EXISTING TYPICAL SECTIONS	
SCALE: N.T.S	SHEET OF SHEETS STA. TO STA.

F.A.U. RTE.	SECTION	COUNTY	TOTAL SHEETS	SHEET NO.
45	41N-1	MASSAC	23	7
CONTRACT NO. 78837				
ILLINOIS FED. AID PROJECT				



EXISTING TYPICAL SECTION – EAST 10TH ST.
STA. 10+00 TO STA. 10+40.38



EXISTING TYPICAL SECTION – NORTH FERRY ST.
STA. 10+00.00 TO STA. 10+40.21

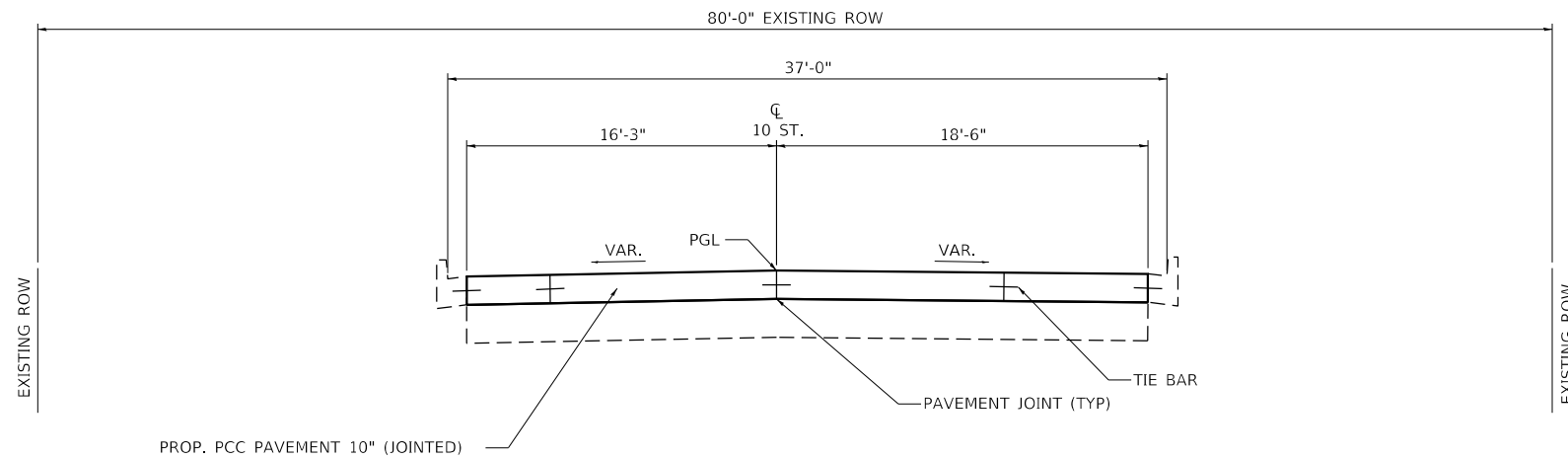
MODEL: Default
FILE NAME: ...10978837-41N-Typical.dgn

USER NAME = spool	DESIGNED -	REVISED -
	DRAWN -	REVISED -
PLOT SCALE = 5.0000' / in.	CHECKED -	REVISED -
PLOT DATE = 2/3/2021 - 3:20:51 PM	DATE -	REVISED -

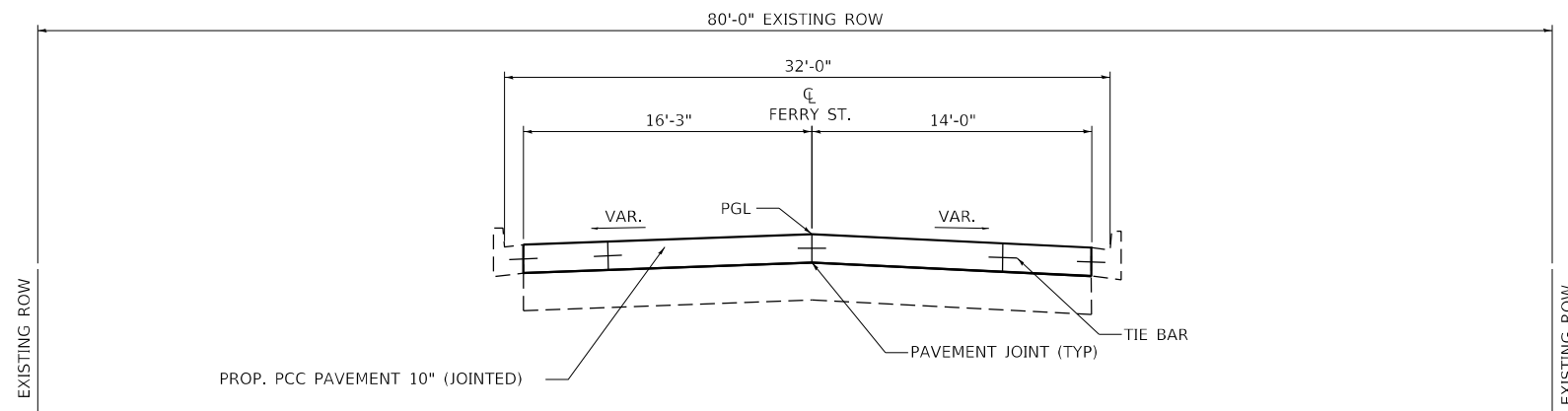
**STATE OF ILLINOIS
DEPARTMENT OF TRANSPORTATION**

EXISTING TYPICAL SECTIONS		SCALE: N.T.S.	SHEET	OF	SHEETS	STA.	TO	STA.

F.A.U. RTE.	SECTION	COUNTY	TOTAL SHEETS	SHEET NO.
45	41N-1	MASSAC	23	8
CONTRACT NO. 78837				
ILLINOIS FED. AID PROJECT				



PROPOSED TYPICAL SECTION – EAST 10TH ST.
 STA. 10+00.00 TO STA. 10+40.38



PROPOSED TYPICAL SECTION – NORTH FERRY ST.
 STA. 10+00.00 TO STA. 10+40.21

MODEL: D:\m\h...
 FILE NAME: ...D:\78837-41N-Typical.dgn

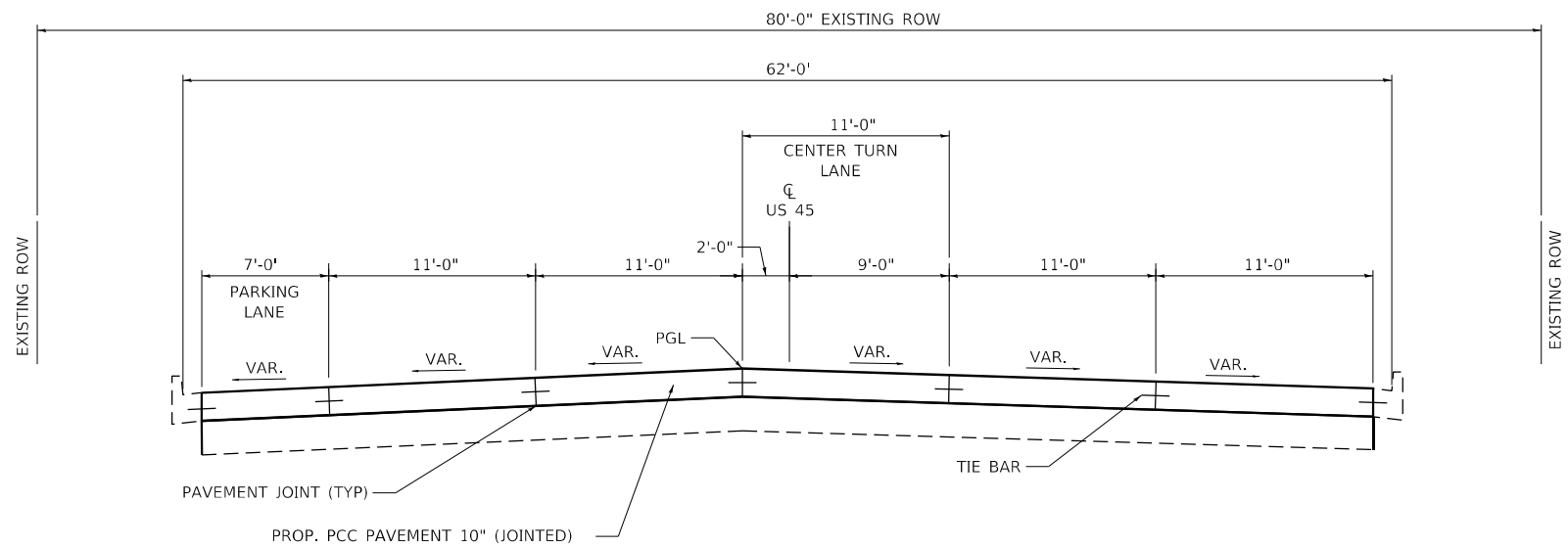
USER NAME = spool	DESIGNED -	REVISED -
	DRAWN -	REVISED -
PLOT SCALE = 5.0000 ' / in.	CHECKED -	REVISED -
PLOT DATE = 2/3/2021 - 3:20:52 PM	DATE -	REVISED -

**STATE OF ILLINOIS
 DEPARTMENT OF TRANSPORTATION**

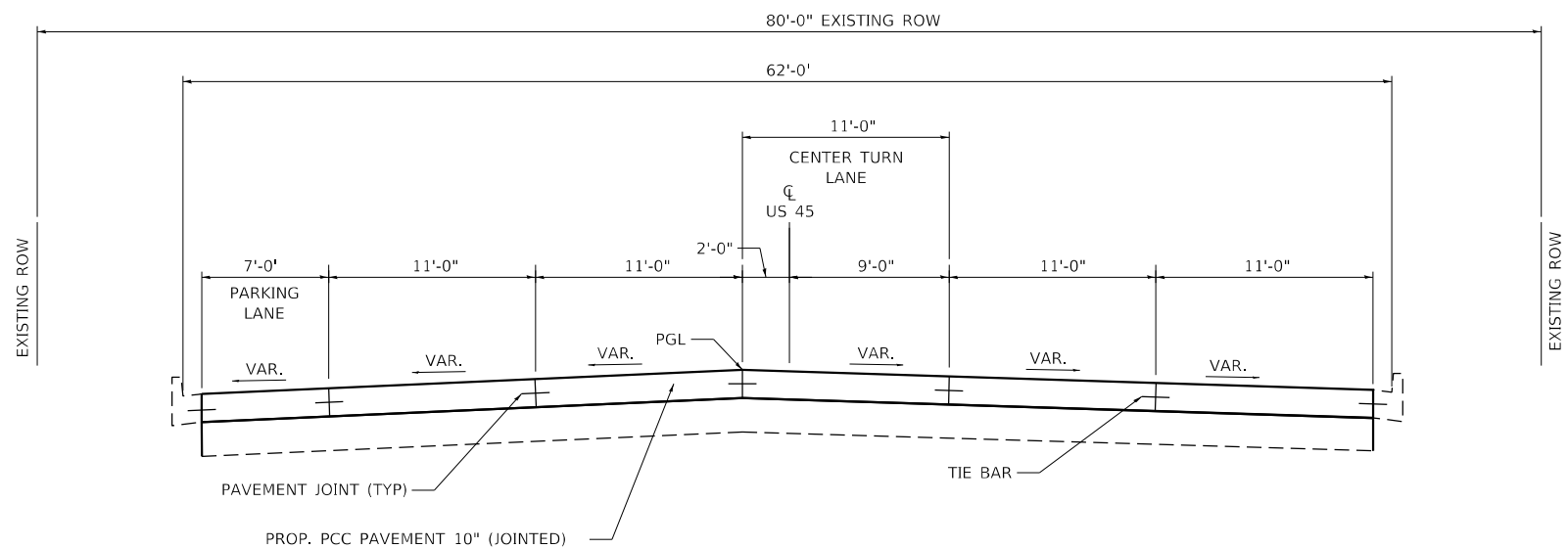
PROPOSED TYPICAL SECTIONS		SCALE: N.T.S	SHEET	OF	SHEETS	STA.	TO STA.

F.A.U. RTE.	SECTION	COUNTY	TOTAL SHEETS	SHEET NO.
45	41N-1	MASSAC	23	10
CONTRACT NO. 78837				
ILLINOIS FED. AID PROJECT				

*F.A.U. ROUTES 9760 & 9771



**PROPOSED TYPICAL SECTION – US 45
WEST OF INTERSECTION
STA. 1137+21.30 TO STA. 1137+67.95**



**PROPOSED TYPICAL SECTION – US 45
SOUTH OF INTERSECTION
STA. 1137+67.95 TO STA. 1138+15.37**

MODEL: D:\m\h...
FILE NAME: ...10978837-41N-Typical.dgn

USER NAME = spool	DESIGNED -	REVISED -
	DRAWN -	REVISED -
PLOT SCALE = 5.0000' / in.	CHECKED -	REVISED -
PLOT DATE = 2/3/2021 - 3:20:52 PM	DATE -	REVISED -

**STATE OF ILLINOIS
DEPARTMENT OF TRANSPORTATION**

PROPOSED TYPICAL SECTIONS	
SCALE: N.T.S	SHEET OF SHEETS STA. TO STA.

F.A.U. RTE.	SECTION	COUNTY	TOTAL SHEETS	SHEET NO.
45	41N-1	MASSAC	23	9
CONTRACT NO. 78837				
ILLINOIS FED. AID PROJECT				

PAVEMENT SCHEDULE

LOCATION STATION TO STATION	PAVEMENT REMOVAL	PORTLAND CEMENT CONCRETE 10" (JOINTED)	TIE BARS 3/4"	DOWEL BARS 1 1/2"	PROTECTIVE COAT	REMARKS
	44000100	42000501	44213204	44201299	42001300	
	SQ YD	SQ YD	EACH	EACH	SQ YD	
MASSAC COUNTY						
NORTH QUADRANT						
U.S. 45						
1137+21.06 TO 1137+67.95	191	165	39	94	165	
EAST QUADRANT						
N FERRY ST.						
10+00.00 TO 10+40.21	128	128	33	90	128	
SOUTH QUADRANT						
U.S. 45						
1137+67.95 TO 1138+15.37	187	187	44	141	187	
WEST QUADRANT						
U.S. 45						
1137+67.95 TO 1138+15.37	256	256	55	142	256	
TOTAL	762	736	171	467.0	736.0	

SIDEWALK AND CONCRETE CURB & GUTTER SCHEDULE

LOCATION STATION TO STATION	COMBINATION CURB AND GUTTER REMOVAL	SIDEWALK REMOVAL	PCC SIDEWALK 4"	COMBINATION CONCRETE CURB AND GUTTER, TYPE B-6.12	DETECTABLE WARNINGS	REMARKS
	44000500	44000600	42400100	60603800	42400800	
	FOOT	SQ FT	SQ FT	FOOT	SQ FT	
MASSAC COUNTY						
U.S. 45						
1136+76 TO 1137+51.75	57	90	252	67	17	
EAST 10TH ST.						
10+14.10 TO 10+36.05		130	139		19	
TOTAL	57	220	391	67	36.0	

MODEL: D:\m\h...
FILE NAME: ...ID\978837-5h-Schedule.dgn

USER NAME = spool	DESIGNED -	REVISED -	STATE OF ILLINOIS DEPARTMENT OF TRANSPORTATION	SCHEDULES				F.A.U. RTE.	SECTION	COUNTY	TOTAL SHEETS	SHEET NO.	
	DRAWN -	REVISED -		SCALE:	SHEET	OF	SHEETS	STA.	TO STA.	41N-1	MASSAC	23	11
PLOT SCALE = 50,0000 ' / in.	CHECKED -	REVISED -		CONTRACT NO. 78837									
PLOT DATE = 2/3/2021 - 3:21:15 PM	DATE -	REVISED -		ILLINOIS FED. AID PROJECT									

PAVEMENT MARKING

LOCATION STATION TO STATION	POLYUREA PAVEMENT MARKING TYPE I				TEMPORARY PAVEMENT MARKING				PAVEMENT MARKING REMOVAL- GRINDING	REMARKS
	LINE 4"	LINE 6"	LINE 12"	LINE 24"	LINE 4"	LINE 6"	LINE 12"	LINE 24"		
	70300220	70300240	70300260	70300280	78008210	78008230	78008250	78008270		
					WHITE	WHITE	WHITE	WHITE		
					FOOT	FOOT	FOOT	FOOT		
MASSAC COUNTY										
U.S. 45										
1137+12.21 TO 1138+16.00	63	275	190	34	63	275	190	34		
NFERRY										
10+31.92 TO 10+40.44		63	45			63	45			
10+44.45 TO 10+46.45				15				15	15	
EAST10										
10+25.28 TO 10+48.63		75	50	18		75	50	18	18	
TOTAL	63	413	285	67	63	413	285	67	33	

DETOUR SIGNING (FOR INFORMATION ONLY)

SIGN ID NO.	DESCRIPTION	SIGN SIZE (INCH)			AREA PER SIGN (SQ FT)	TOTAL SIGNS REQUIRED	SIGN PANEL TYPE 1 (0 - 9) (SQ FT)
			x				
M6 - 1L		21	x	15	2.188	6	13
M6 - 1R		21	x	15	2.188	5	11
M6 - 3		21	x	15	2.188	3	7
M1 - 5		30	x	24	5.000	21	105
M4 - 8	DETOUR	24	x	12	2.000	12	24
W - 20 - 2 - A	DETOUR AHEAD	36	x	36	9.000	6	54
TOTALS						47	201

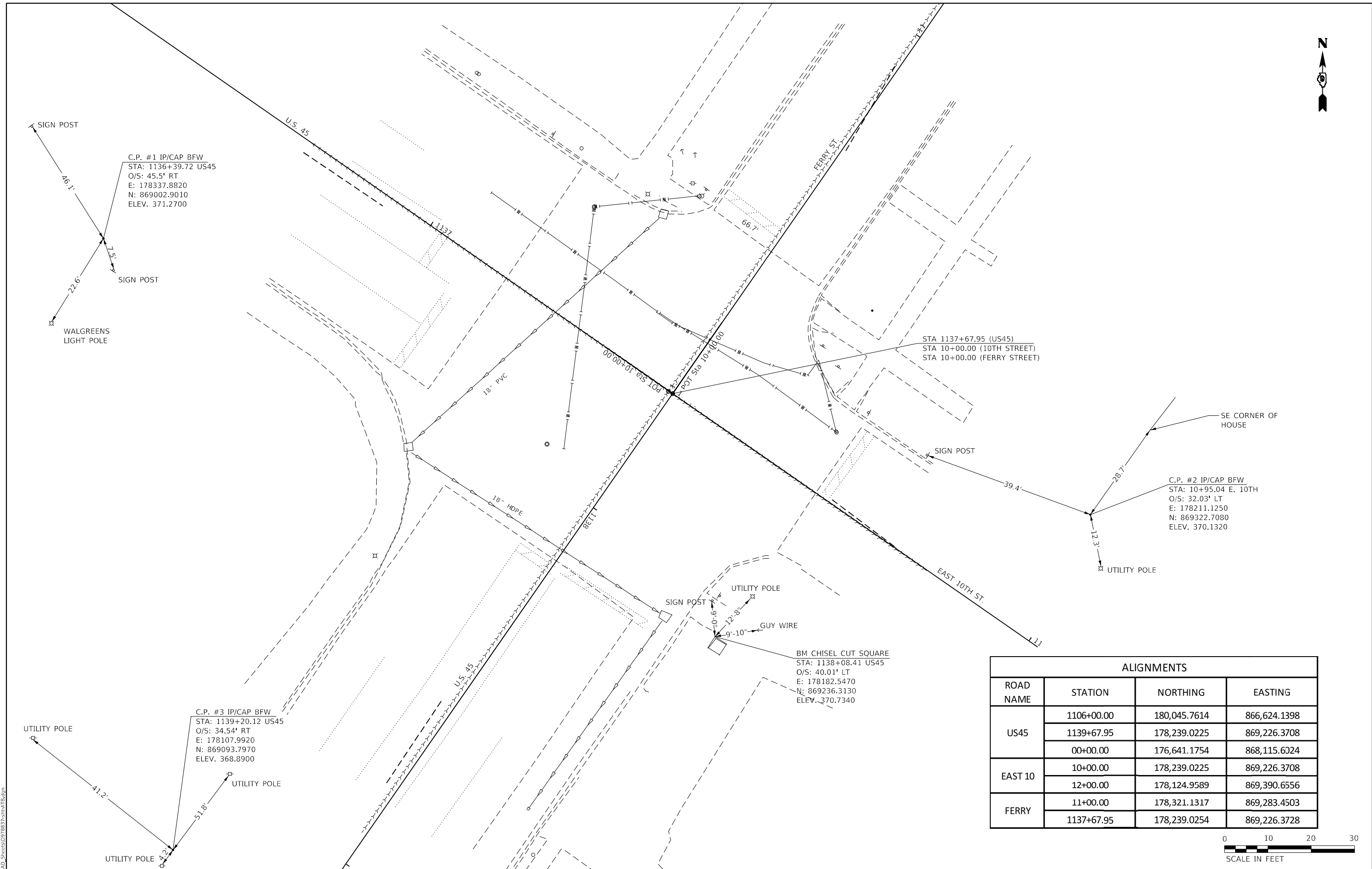
MODEL: D:\m\h...
FILE NAME: ...ID078837-5h-5-schedule.dgn

USER NAME = spool	DESIGNED -	REVISED -
	DRAWN -	REVISED -
PLOT SCALE = 50.0000 ' / in.	CHECKED -	REVISED -
PLOT DATE = 2/3/2021 - 3:21:30 PM	DATE -	REVISED -

**STATE OF ILLINOIS
DEPARTMENT OF TRANSPORTATION**

SCHEDULES			
SCALE:	SHEET	OF	SHEETS
	STA.	TO	STA.

F.A.U. RTE.	SECTION	COUNTY	TOTAL SHEETS	SHEET NO.
*	41N-1	MASSAC	23	12
CONTRACT NO. 78837				
ILLINOIS FED. AID PROJECT				



ALIGNMENTS			
ROAD NAME	STATION	NORTHING	EASTING
US45	1106+00.00	180,045.7614	866,624.1398
	1139+67.95	178,239.0225	869,226.3708
	00+00.00	176,641.1754	868,115.6324
EAST 10	10+00.00	178,239.0225	869,226.3708
	12+00.00	178,124.9589	869,390.6556
FERRY	11+00.00	178,321.1317	869,283.4503
	1137+67.95	178,239.0254	869,226.3728



MODEL: D:\draft...
 FILE NAME: ...CAD_Sheets\0978837-11-11-21.dgn

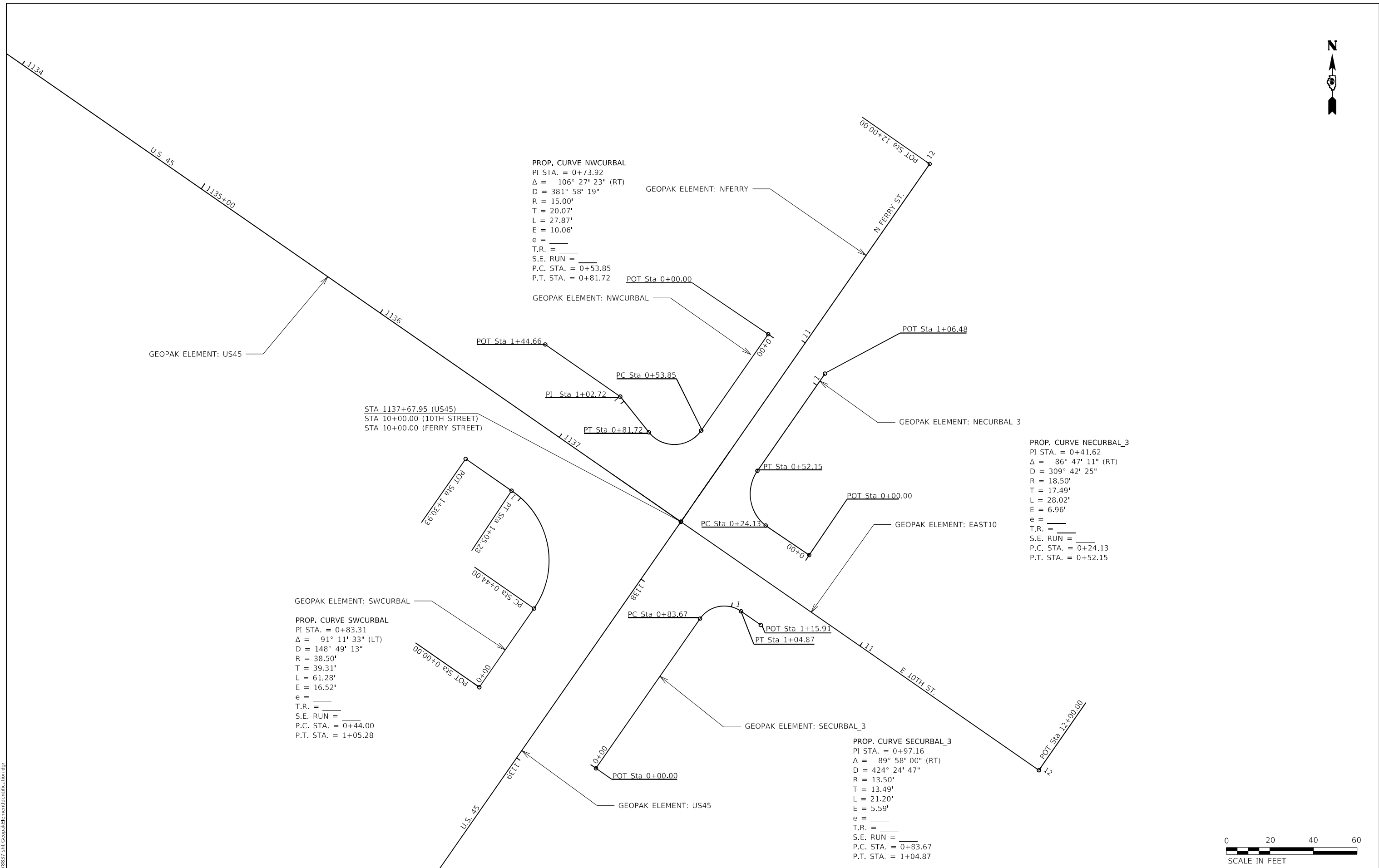
USER NAME = spool	DESIGNED -	REVISED -
PLOT SCALE = 10.0000 1/1 in.	DRAWN -	REVISED -
PLOT DATE = 2/3/2021 - 3:22:10 PM	CHECKED -	REVISED -
	DATE -	REVISED -

STATE OF ILLINOIS
DEPARTMENT OF TRANSPORTATION

ALIGNMENT, TIES AND BENCHMARKS			
SCALE: 1"=10'	SHEET	OF	SHEETS
STA.	TO STA.		

F.A.U. RTE.	SECTION	COUNTY	TOTAL SHEETS	SHEET NO.
*	41N-1	MASSAC	23	13
CONTRACT NO. 78837				
ILLINOIS FED. AID PROJECT				

* F.A.U. ROUTES 9760 & 9771



PROP. CURVE NWCURBAL
 PI STA. = 0+73.92
 $\Delta = 106^\circ 27' 23''$ (RT)
 D = 381' 58" 19"
 R = 15.00'
 T = 20.07'
 L = 27.87'
 E = 10.06'
 e = _____
 T.R. = _____
 S.E. RUN = _____
 P.C. STA. = 0+53.85
 P.T. STA. = 0+81.72

PROP. CURVE NECURBAL_3
 PI STA. = 0+41.62
 $\Delta = 86^\circ 47' 11''$ (RT)
 D = 309' 42' 25"
 R = 18.50'
 T = 17.49'
 L = 28.02'
 E = 6.96'
 e = _____
 T.R. = _____
 S.E. RUN = _____
 P.C. STA. = 0+24.13
 P.T. STA. = 0+52.15

PROP. CURVE SWCURBAL
 PI STA. = 0+83.31
 $\Delta = 91^\circ 11' 33''$ (LT)
 D = 148' 49' 13"
 R = 38.50'
 T = 39.31'
 L = 61.28'
 E = 16.52'
 e = _____
 T.R. = _____
 S.E. RUN = _____
 P.C. STA. = 0+44.00
 P.T. STA. = 1+05.28

PROP. CURVE SECURBAL_3
 PI STA. = 0+97.16
 $\Delta = 89^\circ 58' 00''$ (RT)
 D = 424' 24' 47"
 R = 13.50'
 T = 13.49'
 L = 21.20'
 E = 5.59'
 e = _____
 T.R. = _____
 S.E. RUN = _____
 P.C. STA. = 0+83.67
 P.T. STA. = 1+04.87



MODEL: D:\draft\..._ID078837-511-CeopalkElementIdentification.dgn

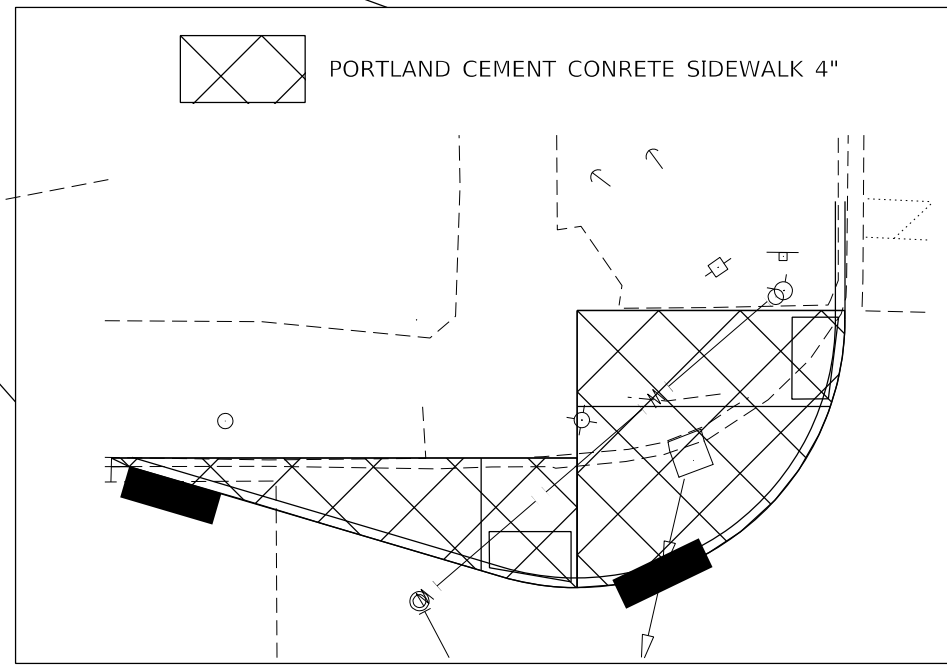
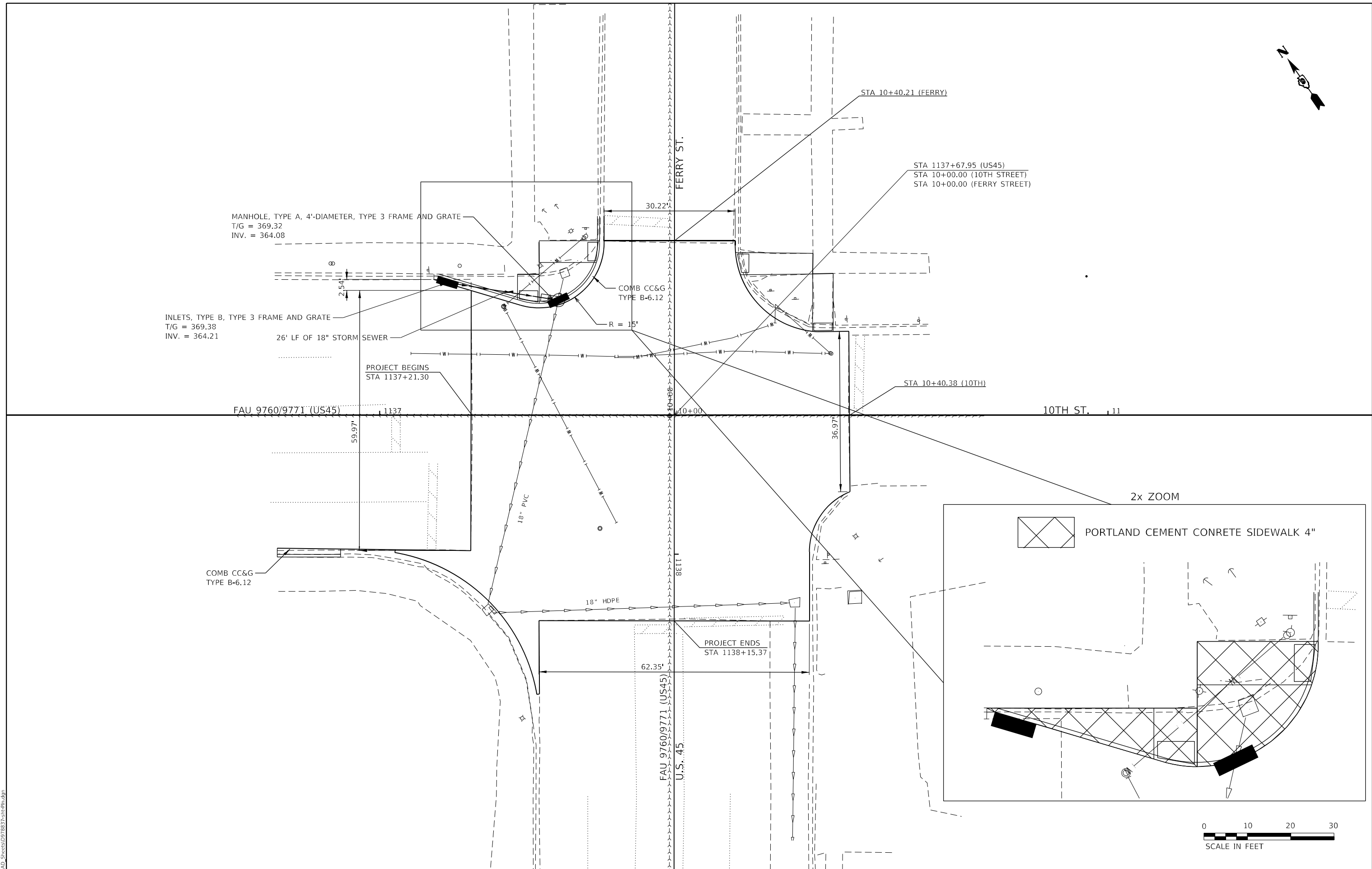
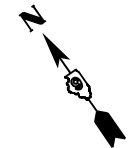
USER NAME = spool	DESIGNED -	REVISED -
PLOT SCALE = 20.0000 1/ in.	DRAWN -	REVISED -
PLOT DATE = 2/3/2021 - 3:22:35 PM	CHECKED -	REVISED -
	DATE -	REVISED -

**STATE OF ILLINOIS
DEPARTMENT OF TRANSPORTATION**

GEOPAK ELEMENT IDENTIFICATION			
SCALE: 1"=20'	SHEET	OF SHEETS	STA. TO STA.

F.A.U. RTE.	SECTION	COUNTY	TOTAL SHEETS	SHEET NO.
*	41N-1	MASSAC	23	14
CONTRACT NO. 78837				
ILLINOIS FED. AID PROJECT				

* F.A.U. ROUTES 9760 & 9771



MODEL: Default
 FILE NAME: ...CAD_Sheets\0978837-sh-cp-r.dwg

USER NAME = spool	DESIGNED -	REVISED -
PLOT SCALE = 10.0000 ' / in.	DRAWN -	REVISED -
PLOT DATE = 2/3/2021 - 3:22:59 PM	CHECKED -	REVISED -
	DATE -	REVISED -

STATE OF ILLINOIS
DEPARTMENT OF TRANSPORTATION

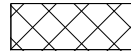
PLAN
 SCALE: 1"=10'
 SHEET OF SHEETS STA. TO STA.

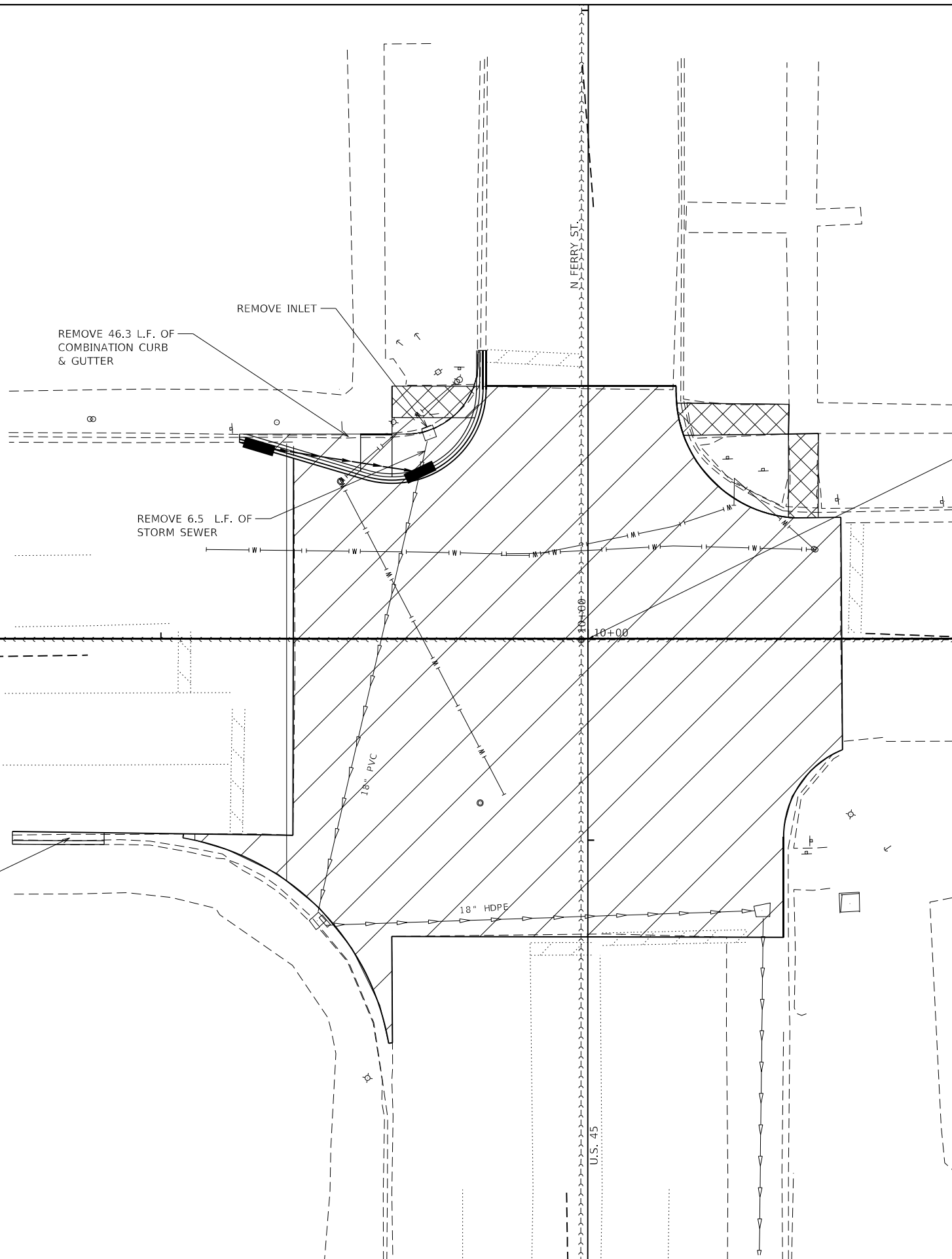
F.A.U. RTE.	SECTION	COUNTY	TOTAL SHEETS	SHEET NO.
*	41N-1	MASSAC	23	15
CONTRACT NO. 78837				
ILLINOIS FED. AID PROJECT				

* F.A.U. ROUTES 9760 & 9771



 - PCC PAVEMENT REMOVAL

 - SIDEWALK REMOVAL



STA. 1137+67.95 (U.S. 45)
 STA. 10+00.00 (10TH STREET)
 STA. 10+00.00 (FERRY STREET)

U.S. 45

N FERRY ST.

10+00

E 10TH ST.

REMOVE 15 L.F. OF
 COMBINATION CURB
 & GUTTER

REMOVE 46.3 L.F. OF
 COMBINATION CURB
 & GUTTER

REMOVE 6.5 L.F. OF
 STORM SEWER

18" PVC

18" HDPE

U.S. 45



MODEL: Default
 FILE NAME: ...0978837-514-Removal.dwg

USER NAME = spool	DESIGNED -	REVISED -
PLOT SCALE = 10,0000 ' / in.	DRAWN -	REVISED -
PLOT DATE = 2/3/2021 - 3:23:22 PM	CHECKED -	REVISED -
	DATE -	REVISED -

**STATE OF ILLINOIS
 DEPARTMENT OF TRANSPORTATION**

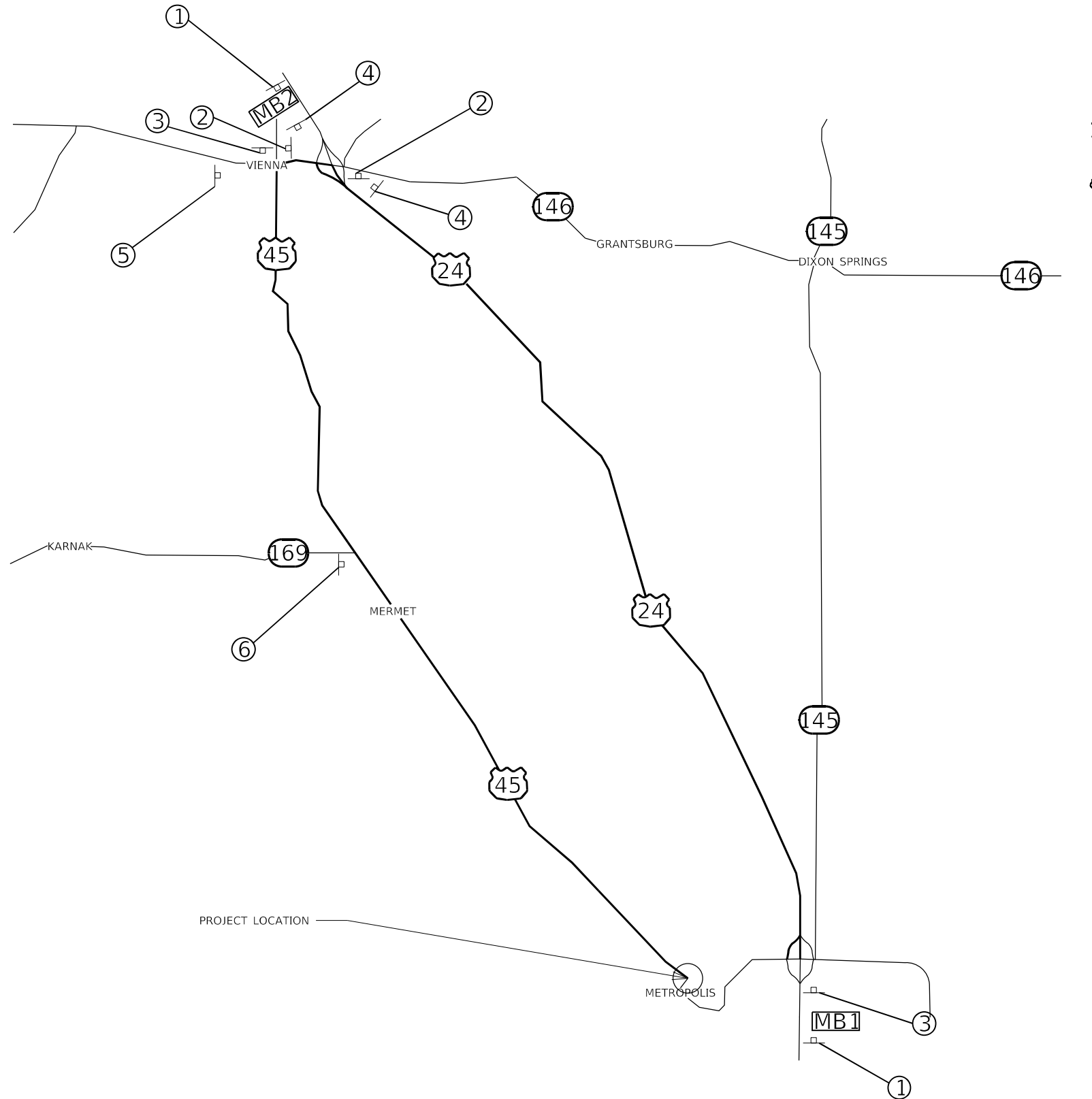
REMOVAL PLANS

SCALE: 1"=20' SHEET OF SHEETS STA. TO STA.

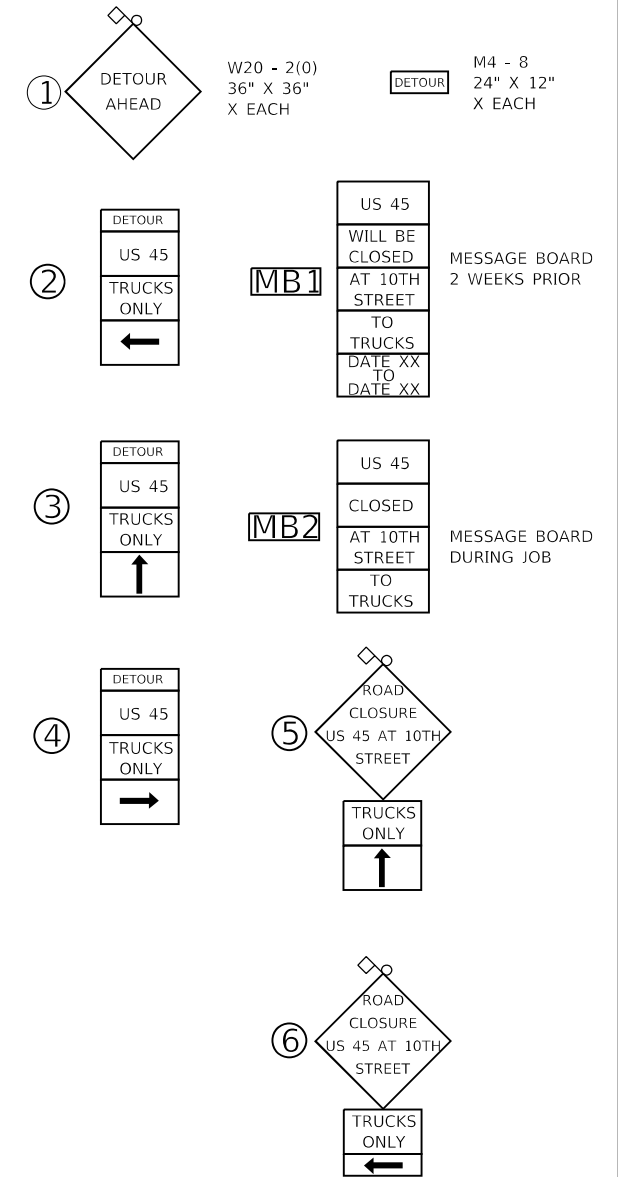
F.A.U. RTE.	SECTION	COUNTY	TOTAL SHEETS	SHEET NO.
*	41N-1	MASSAC	23	16
CONTRACT NO. 78837				
ILLINOIS FED. AID PROJECT				

* F.A.U. ROUTES 9760 & 9771

DETOUR SIGNING DETAIL



SIGN LEGEND



MODEL: D:\m\h...
 FILE NAME: ...ID078837-51h-Detour.dgn

USER NAME = spool	DESIGNED -	REVISED -
	DRAWN -	REVISED -
PLOT SCALE = 20.0000 ' / in.	CHECKED -	REVISED -
PLOT DATE = 2/3/2021 - 3:23:44 PM	DATE -	REVISED -

**STATE OF ILLINOIS
 DEPARTMENT OF TRANSPORTATION**

**US 45 AT FERRY STREET & 10TH ST.
 DETOUR AND TRAFFIC CONTROL**

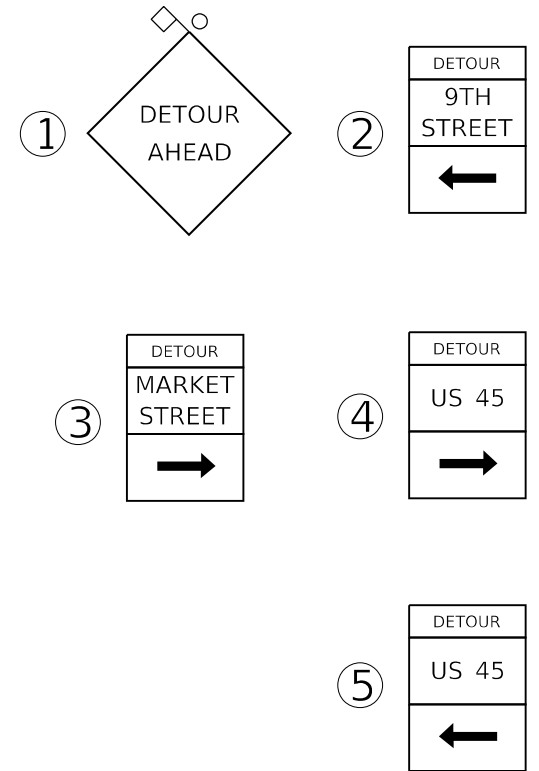
SCALE: N.T.S. SHEET OF SHEETS STA. TO STA.

F.A.U. RTE.	SECTION	COUNTY	TOTAL SHEETS	SHEET NO.
*	41N-1	MASSAC	23	17
CONTRACT NO. 78837				
ILLINOIS FED. AID PROJECT				

* F.A.U. ROUTES 9760 & 9771



SIGN LEGEND



MODEL: Default
FILE NAME: ...ID: 78837-511-detour-traffic.dgn

USER NAME = spool	DESIGNED -	REVISED -
	DRAWN -	REVISED -
PLOT SCALE = 5.0000' / in.	CHECKED -	REVISED -
PLOT DATE = 2/3/2021 - 3:24:05 PM	DATE -	REVISED -

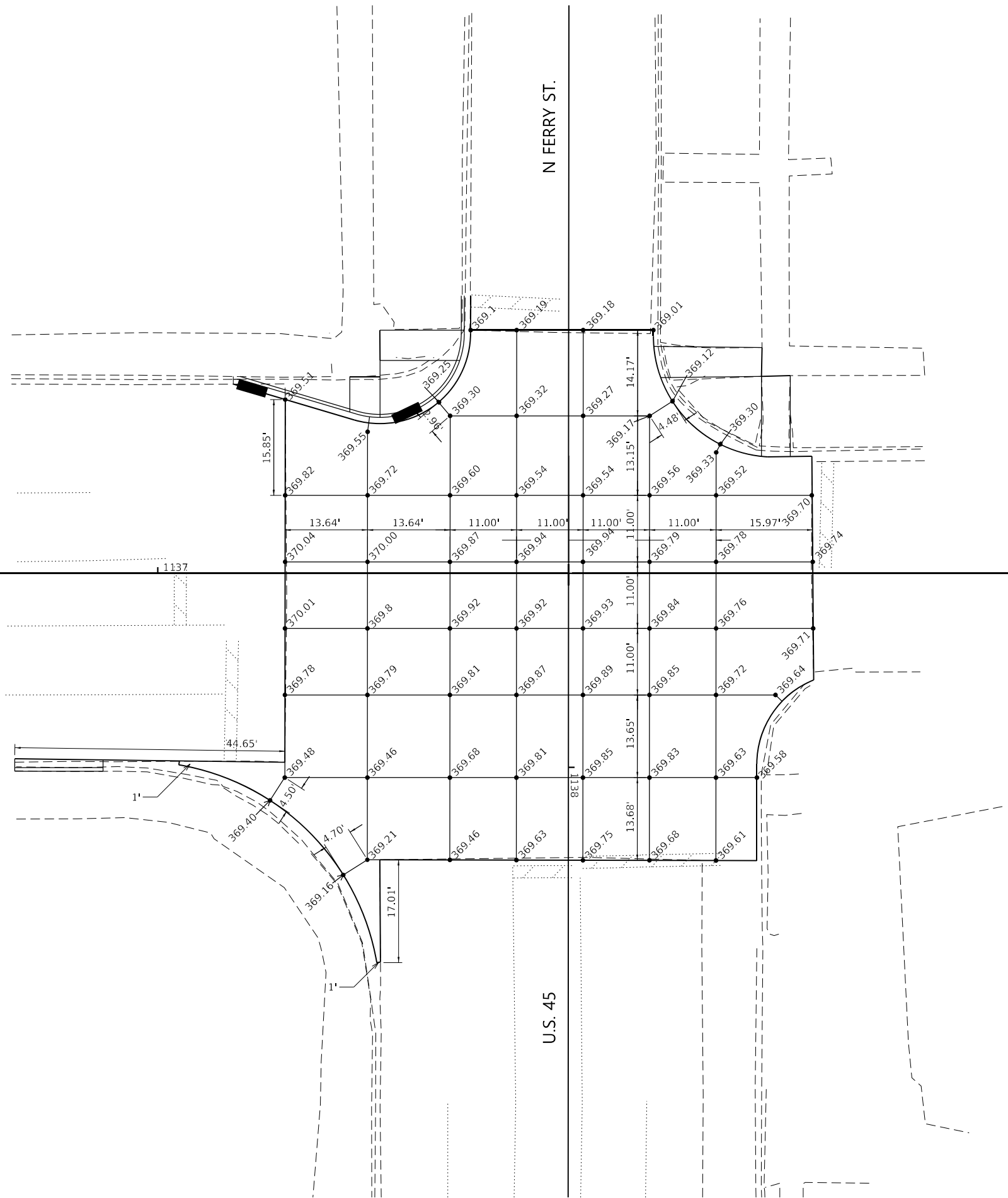
**STATE OF ILLINOIS
DEPARTMENT OF TRANSPORTATION**

**US 45 AT FERRY STREET & 10TH ST.
DETOUR AND TRAFFIC CONTROL**

SCALE: N.T.S. SHEET OF SHEETS STA. TO STA.

F.A.U. RTE.	SECTION	COUNTY	TOTAL SHEETS	SHEET NO.
*	41N-1	MASSAC	23	18
CONTRACT NO. 78837				
ILLINOIS FED. AID PROJECT				

* F.A.U. ROUTES 9760 & 9771



U.S. 45

E 10TH ST.

N FERRY ST.

U.S. 45



MODEL: D:\draft...
FILE NAME: ...ID078837-5h-intersec.dwg

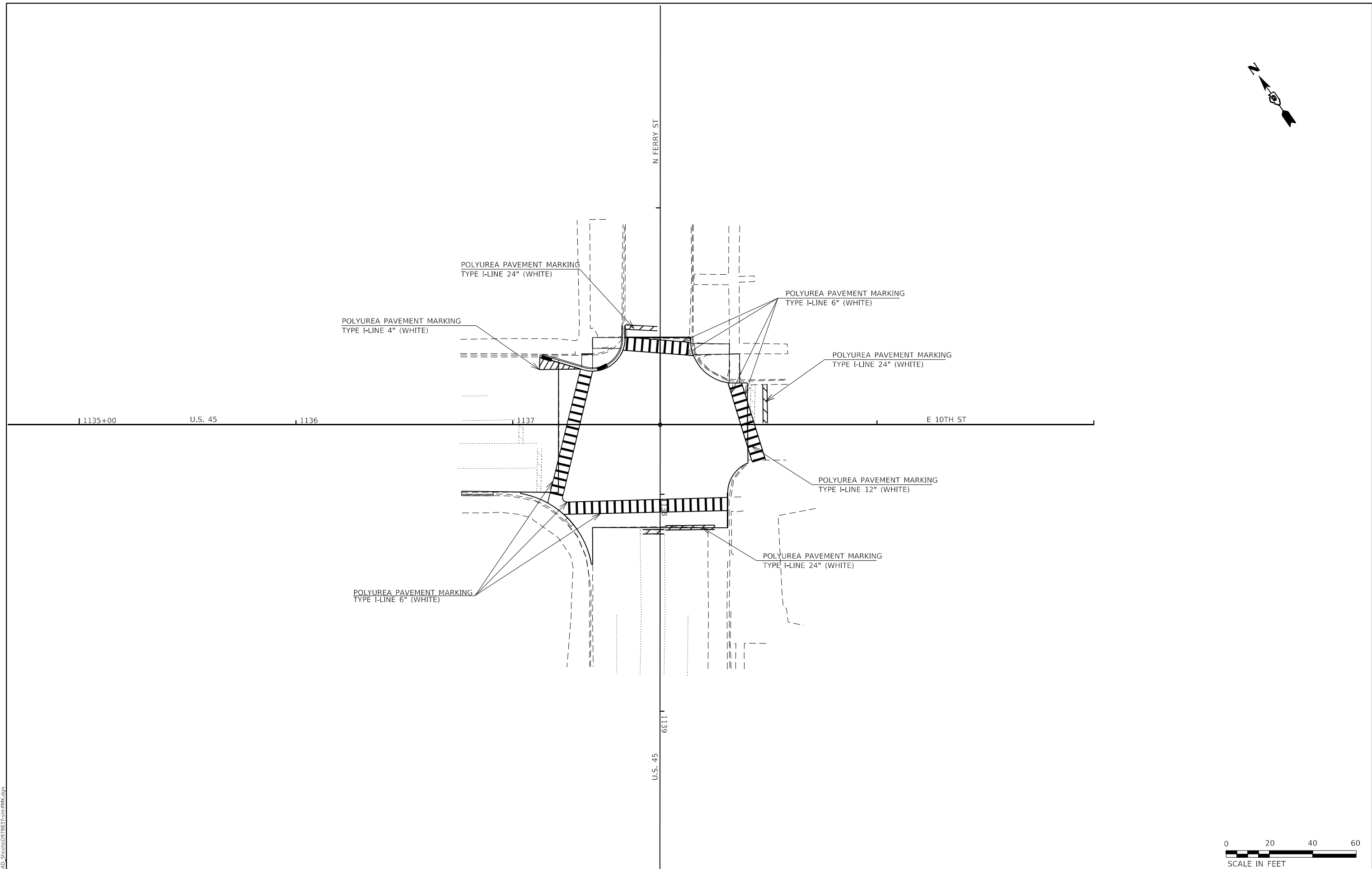
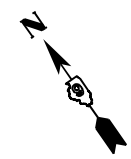
USER NAME = spool	DESIGNED -	REVISED -
	DRAWN -	REVISED -
PLOT SCALE = 10.0000 ' / in.	CHECKED -	REVISED -
PLOT DATE = 2/3/2021 - 3:24:28 PM	DATE -	REVISED -

**STATE OF ILLINOIS
DEPARTMENT OF TRANSPORTATION**

INTERSECTION JOINTING AND DETAILS

SCALE: 1"=10' SHEET OF SHEETS STA. TO STA.

F.A.U. RTE.	SECTION	COUNTY	TOTAL SHEETS	SHEET NO.
*	41N-1	MASSAC	23	19
CONTRACT NO. 78837				



MODEL: Default
 FILE NAME: ...CAD_Sheet10978837-sh-PMK.dgn

USER NAME = spool	DESIGNED -	REVISED -
	DRAWN -	REVISED -
PLOT SCALE = 20.0000 ' / in.	CHECKED -	REVISED -
PLOT DATE = 2/3/2021 - 3:24:51 PM	DATE -	REVISED -

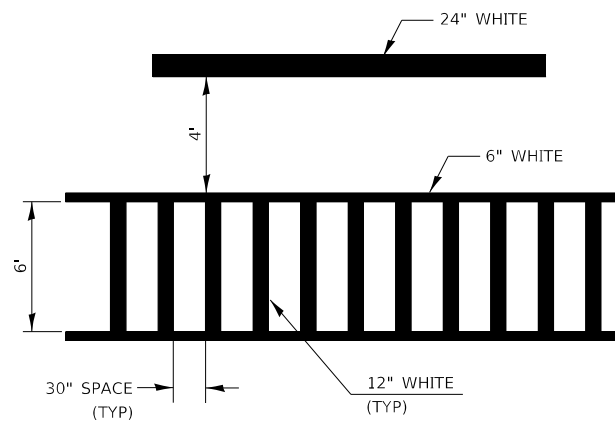
STATE OF ILLINOIS
DEPARTMENT OF TRANSPORTATION

PAVEMENT MARKINGS

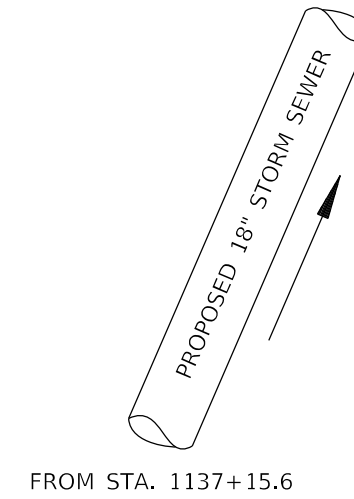
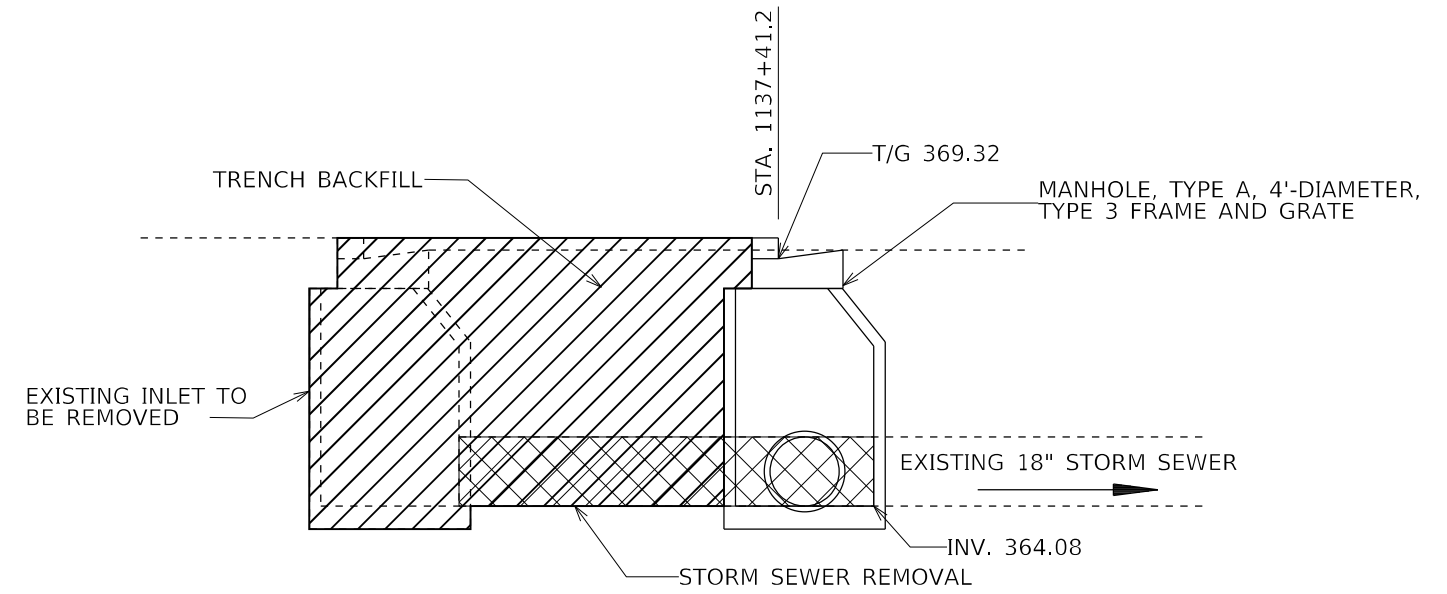
SCALE: 1"=20' SHEET 1 OF 1 SHEETS STA. TO STA.

F.A.U. RTE.	SECTION	COUNTY	TOTAL SHEETS	SHEET NO.
*	41N-1	MASSAC	23	20
CONTRACT NO. 78837				





**TYPICAL SPACING DETAIL FOR
CROSSWALKS AND STOP BARS**



FROM STA. 1137+15.6

STORM SEWER DETAIL

MODEL: D:\m\h
FILE NAME: ...0978837-51h-Doc\title.dgn

USER NAME = spool	DESIGNED -	REVISED -
	DRAWN -	REVISED -
PLOT SCALE = 50,0000 ' / in.	CHECKED -	REVISED -
PLOT DATE = 2/3/2021 - 3:25:15 PM	DATE -	REVISED -

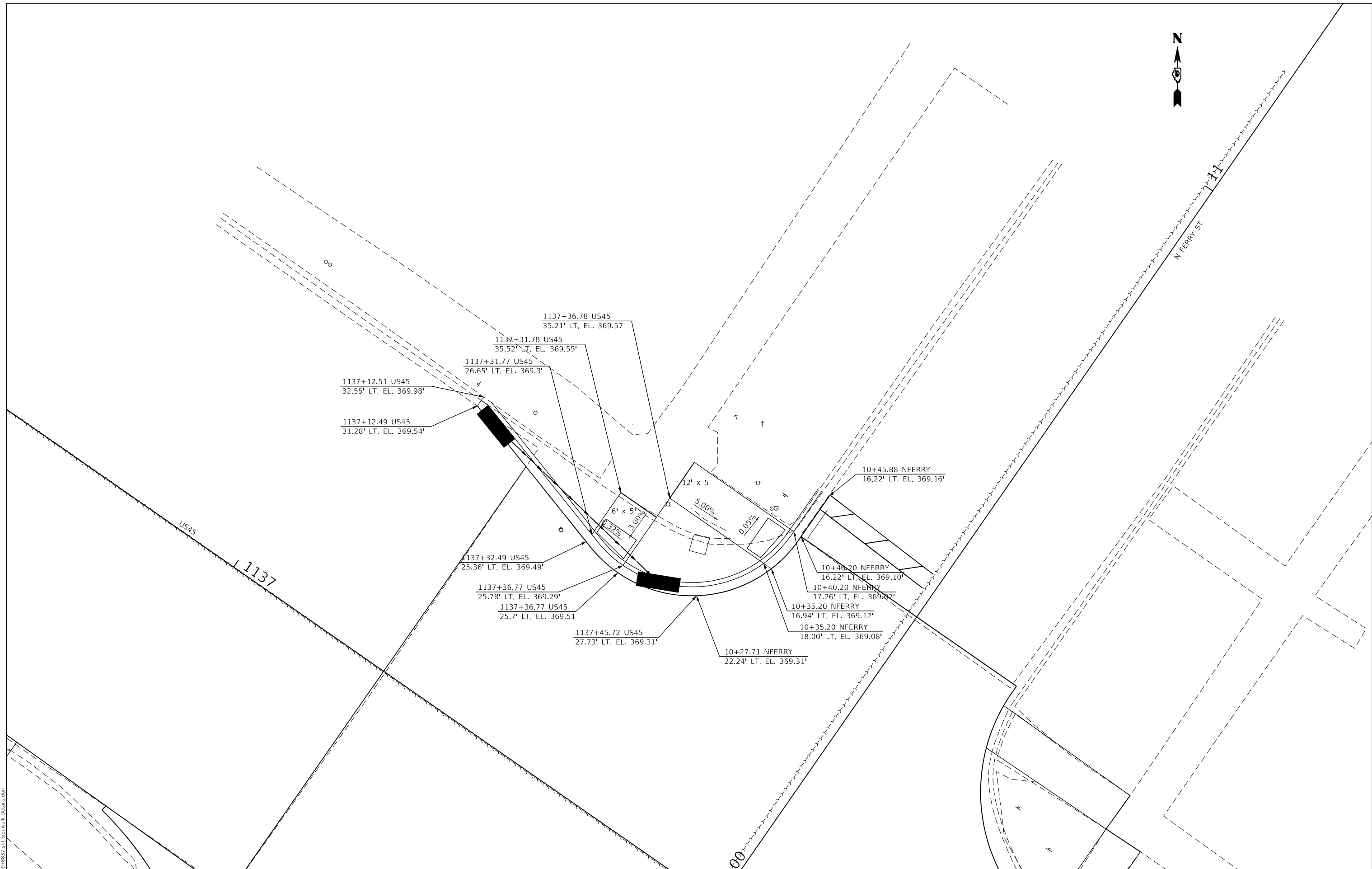
**STATE OF ILLINOIS
DEPARTMENT OF TRANSPORTATION**

DETAILS

SCALE: N.T.S. SHEET OF SHEETS STA. TO STA.

F.A.U. RTE.	SECTION	COUNTY	TOTAL SHEETS	SHEET NO.
*	41N-1	MASSAC	23	21
			CONTRACT NO. 78837	
		ILLINOIS	FED. AID PROJECT	

* F.A.U. ROUTES 9760 & 9771



MODEL: Default
 FILE NAME: ...ID078837-51b-51d-revwalk-Detail.dgn

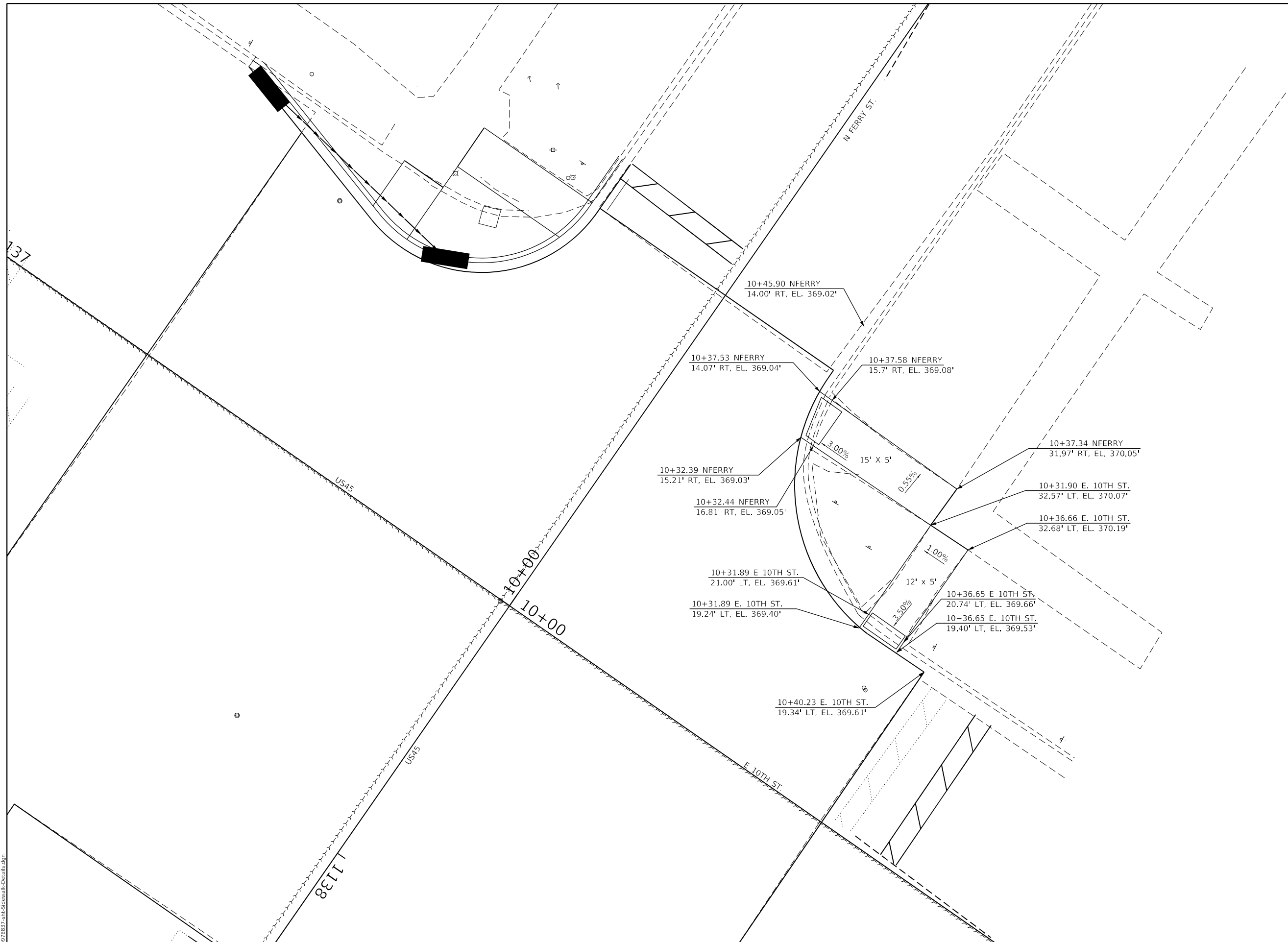
USER NAME = spool	DESIGNED -	REVISED -
	DRAWN -	REVISED -
PLOT SCALE = 5.0000' / in.	CHECKED -	REVISED -
PLOT DATE = 2/3/2021 - 3:25:38 PM	DATE -	REVISED -

STATE OF ILLINOIS
DEPARTMENT OF TRANSPORTATION

SIDEWALK DETAILS			
SCALE: 1"=5'	SHEET	OF SHEETS	STA. TO STA.

F.A.U. RTE.	SECTION	COUNTY	TOTAL SHEETS	SHEET NO.
	41N-1	MASSAC	23	22
CONTRACT NO. 78837				
ILLINOIS FED. AID PROJECT				

*F.A.U. ROUTES 9760 & 9771



MODEL: Default
 FILE NAME: ...10978837-sh-sidewalk-detailed.dgn

USER NAME = spool	DESIGNED -	REVISED -
	DRAWN -	REVISED -
PLOT SCALE = 5.0000' / in.	CHECKED -	REVISED -
PLOT DATE = 2/3/2021 - 3:25:39 PM	DATE -	REVISED -

STATE OF ILLINOIS
DEPARTMENT OF TRANSPORTATION

SIDEWALK DETAILS

SCALE: 1"=5' SHEET OF SHEETS STA. TO STA.

F.A.U. RTE.	SECTION	COUNTY	TOTAL SHEETS	SHEET NO.
*	41N-1	MASSAC	23	23
CONTRACT NO. 78837				
ILLINOIS FED. AID PROJECT				

*F.A.U. ROUTES 9760 & 9771