

STATE OF ILLINOIS  
DEPARTMENT OF TRANSPORTATION

F A U RTE	SECTION	COUNTY	TOTAL SHEETS	SHEET NO.
9677	D9 PATCH 2021-5	JACKSON	7	1
		ILLINOIS	CONTRACT NO. 78851	

FOR INDEX OF SHEETS, SEE SHEET NO. 3

**TRAFFIC DATA - (2019 ADT)**

FAU 9677 (6TH ST) - 2,800 WITH 3.9% TRUCKS

**POSTED SPEED LIMITS**

FAU 9677 (6TH ST) - 40 MPH (JOHN ST TO IL 127)

FAU 9677 (6TH ST) - 35 MPH (DEWITTE ST TO JOHN ST)

**TOWNSHIPS**

MURPHYSBORO

SOMERSET

**COORDINATE SYSTEM:**

EPSG: 102672 - NAD 1983

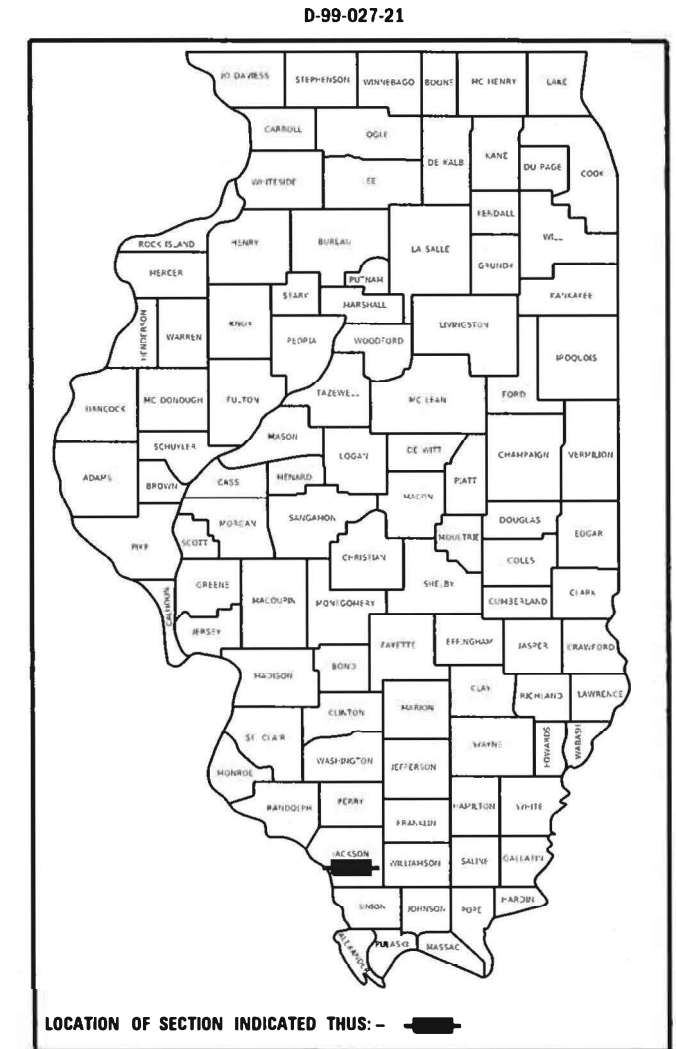
STATE PLANE ILLINOIS EAST FIPS 1202 WEST

**PROPOSED  
HIGHWAY PLANS**

FAU ROUTE 9677 (NORTH 6TH STREET)  
SECTION D9 PATCH 2021-5

PAVEMENT PATCHING JACKSON  
COUNTY

C-99-035-21



END PROJECT FAU 9677  
STA 47+56.65 6TH ST

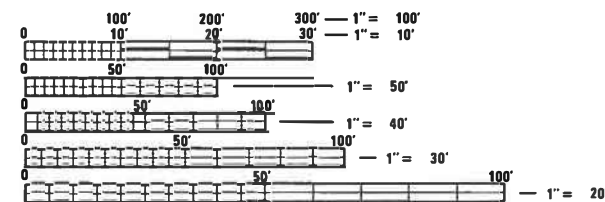
T 8 S

BEGIN PROJECT FAU 9677  
STA 13+08 6TH ST

T 9 S



R 2 W



FULL SIZE PLANS HAVE BEEN PREPARED USING STANDARD ENGINEERING SCALES. REDUCED SIZED PLANS WILL NOT CONFORM TO STANDARD SCALES. IN MAKING MEASUREMENTS ON REDUCED PLANS, THE ABOVE SCALES MAY BE USED.

J.U.L.I.E.  
JOINT UTILITY LOCATION INFORMATION FOR EXCAVATORS  
1-800-892-0123  
OR 811

PROJECT ENGINEER SUSAN POE  
PROJECT MANAGER NATHAN TAYLOR

CONTRACT NO. 78851

GROSS LENGTH = 3449 FT. = 0.65 MILE  
NET LENGTH = 3449 FT. = 0.65 MILE

STATE OF ILLINOIS  
DEPARTMENT OF TRANSPORTATION

SUBMITTED Jan 20 20 21  
Keith Roberts REGIONAL ENGINEER

March 19, 2021  
[Signature]  
ENGINEER OF DESIGN AND ENVIRONMENT

March 19, 2021  
[Signature]  
DIRECTOR OF HIGHWAYS PROJECT IMPLEMENTATION

**PRINTED BY THE AUTHORITY  
OF THE STATE OF ILLINOIS**



# GENERAL NOTES

THE CONTRACTOR SHALL STAMP STATIONING IN THE PROPOSED HOT MIX ASPHALT SURFACE AT 300 FT INTERVALS ON ALTERNATING SIDES OF THE PAVEMENT AND AS DIRECTED BY THE ENGINEER. THE STATION SYMBOL STAMPS USED SHALL BE FURNISHED BY THE CONTRACTOR. THEY SHALL BE 5 1/2 IN. TALL, OF A DESIGN

COMMITMENTS: NONE

# INDEX OF SHEETS

SHEET NO	DESCRIPTION
1	COVER SHEET
2	SIGNATURE SHEET
3	INDEX OF SHEETS, HIGHWAY STANDARDS, GENERAL NOTES, COMMITMENTS
4	SUMMARY OF QUANTITIES
5	TYPICAL SECTIONS: FAU 9677
6	SCHEDULE OF QUANTITIES
7	PATCHING DETAILS

# LIST OF STANDARDS

- 000001-08\_STANDARDSYMBOLSABBREVIATIONS&PATTERNS-001
- 001001-02\_AREASOFREINFREBARS
- 001006\_DECIMALOFINCH&FOOT
- 420001-09\_PAVEMENTJOINTS
- 420701-03\_PAVEMENTWELDEDWIREREINFORCEMENT
- 442201-03\_CLASSC&DPATCHES
- 701001-02\_OFFRDOP-2L2W-15FTMINFROMEOP
- 701006-05\_OFFRDOP-2L2W-15FTTOEOP
- 701301-04\_LNCLOSURE2L2W-SHORTTIMEOP
- 701501-06\_URBANLNCLOSURE2L2W-UNDIVIDED
- 701901-08\_TRAFCNTRLDEVICES

MODFL: Default  
 FILE NAME: \\p1duncon01.dgs\illinois\gov\p1duncon\DOT\Documents\DOT\Office\David.L.9\Projects\78851\CAD\Drawings\0978851-Sheets.dgn

USER NAME = TaylorND	DESIGNED - _____	REVISED - _____
DRAWN - _____	REVISOR - _____	
PLOT SCALE = 2.0000" / in.	CHECKED - _____	REVISED - _____
PLOT DATE = 12/28/2020	DATE - _____	REVISED - _____

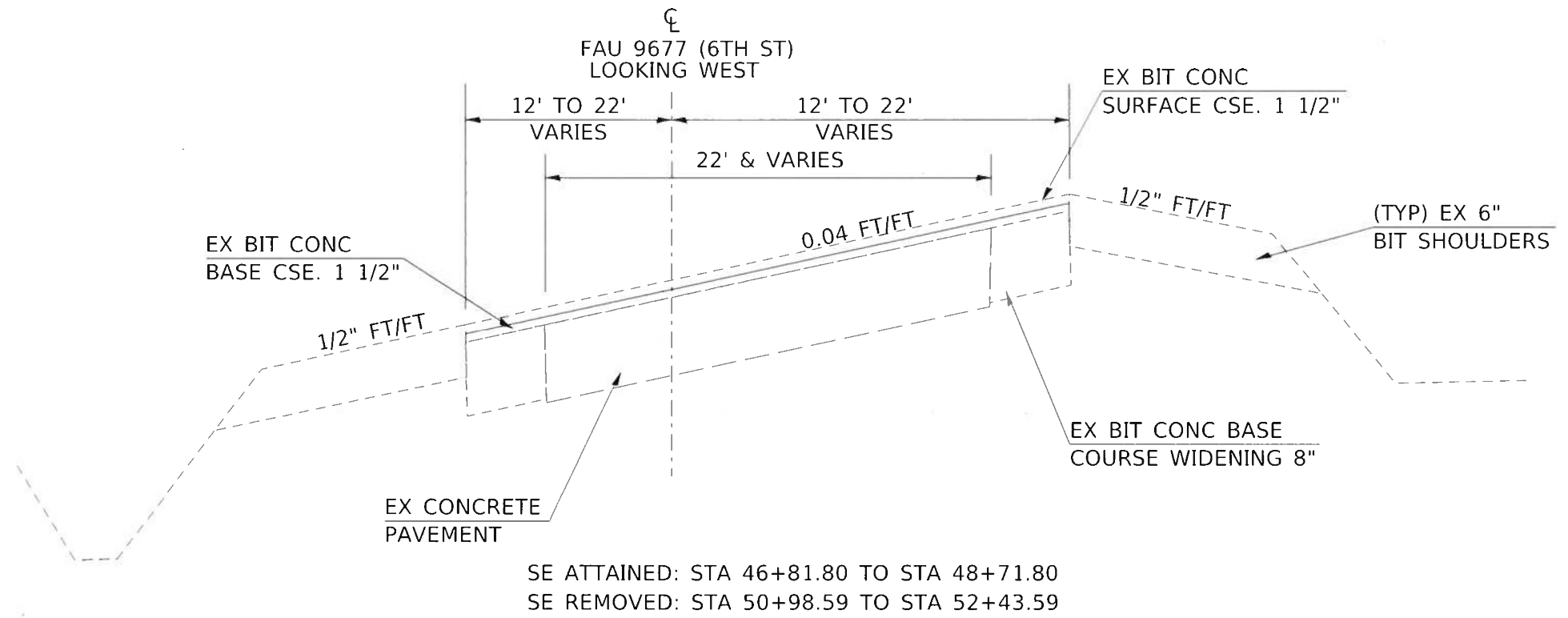
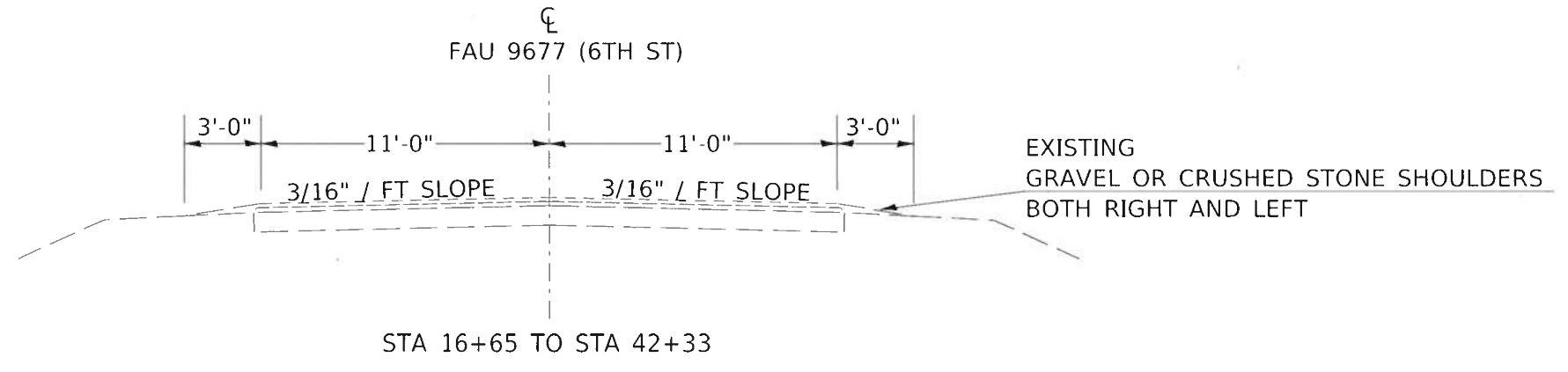
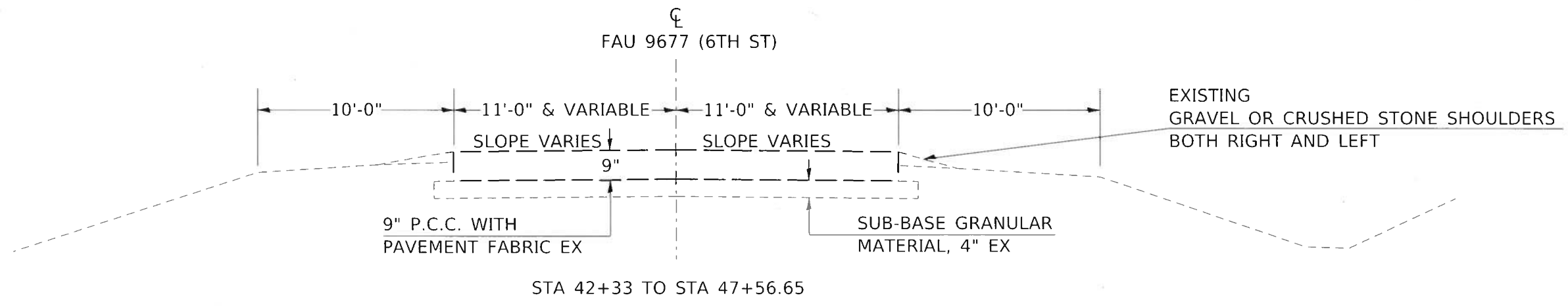
**STATE OF ILLINOIS**  
**DEPARTMENT OF TRANSPORTATION**

**INDEX OF SHEETS, LIST OF STANDARDS,**  
**GENERAL NOTES**

SCALE: \_\_\_\_\_ SHEET \_\_\_\_ OF \_\_\_\_ SHEETS STA. \_\_\_\_\_ TO STA. \_\_\_\_\_

F.A. U. RTE.	SECTION	COUNTY	TOTAL SHEETS	SHEET NO.
9677	D9 PATCH 2021-5	JACKSON	7	3
			CONTRACT NO. 78851	
ILLINOIS FED. AID PROJECT				





MODEL: Default  
 FILE NAME: p:\gis\arcom\dot\illinois\pwr\pwr\DOT\Documents\DOT\_Offices\District\_9\Projects\7885\1\CA\Drawings\Drawings\97885\_1\TYPSECTIONS

USER NAME = TaylorND	DESIGNED - _____	REVISED - _____
DRAWN - _____	REVISOR - _____	REVISOR - _____
PLOT SCALE = 2.0000' / in.	CHECKED - _____	REVISOR - _____
PLOT DATE = 1/20/2021	DATE - _____	REVISOR - _____

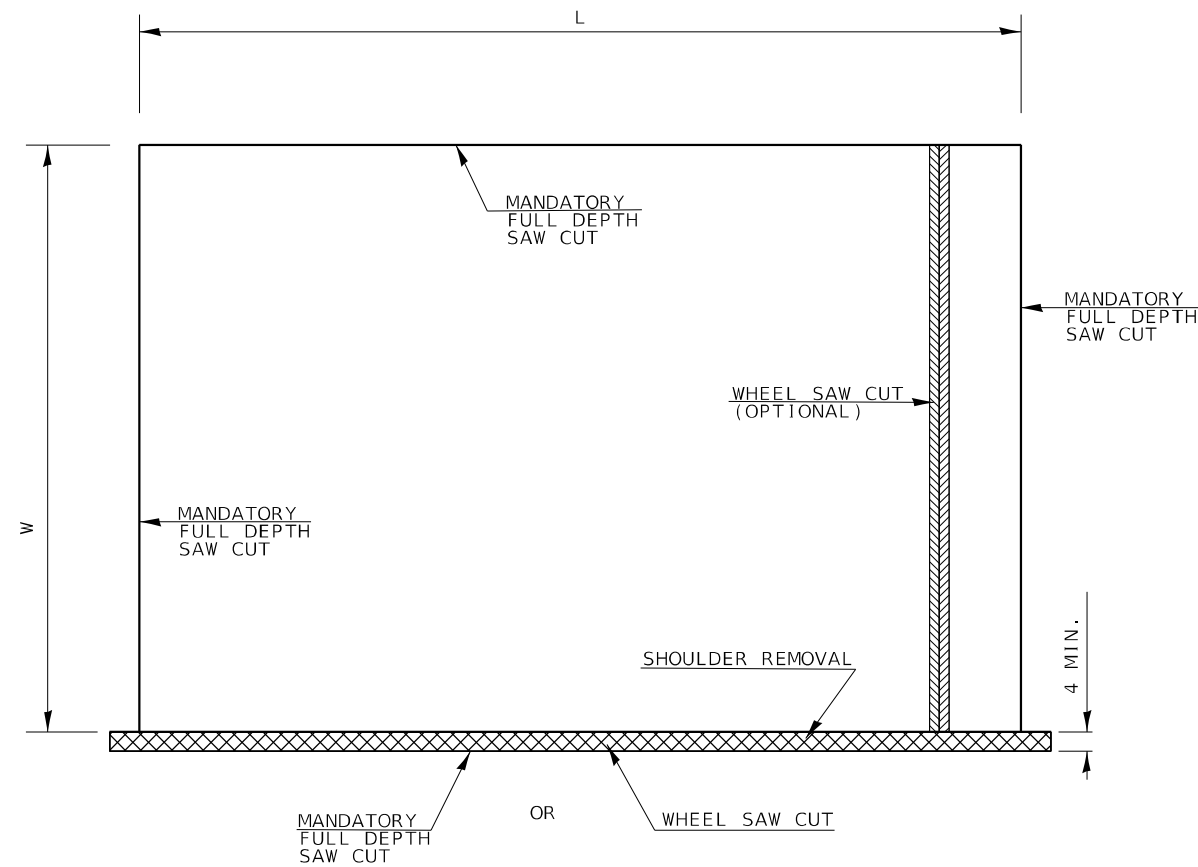
**STATE OF ILLINOIS**  
**DEPARTMENT OF TRANSPORTATION**

<b>TYPICAL SECTIONS</b>	
SCALE: _____	SHEET _____ OF _____ SHEETS STA _____ TO STA _____

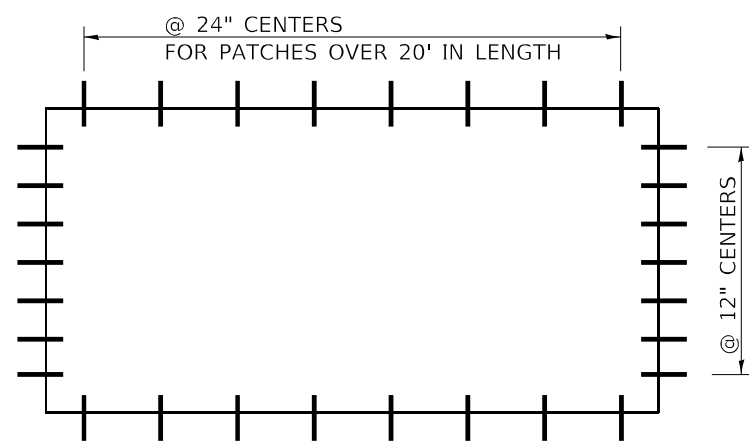
F.A.U. RTE. 9677	SECTION D9PATCH-2021-5	COUNTY JACKSON	TOTAL SHEETS 7	SHEET NO. 5
CONTRACT NO. 78851				
ILLINOIS FED. AID PROJECT				



# CLASS C PATCHES (SPECIAL)



**PAVEMENT SAWING DETAIL**



**TIE BAR PLAN**

(TIE BARS WILL NOT BE USED AGAINST PAVED SHOULDER)

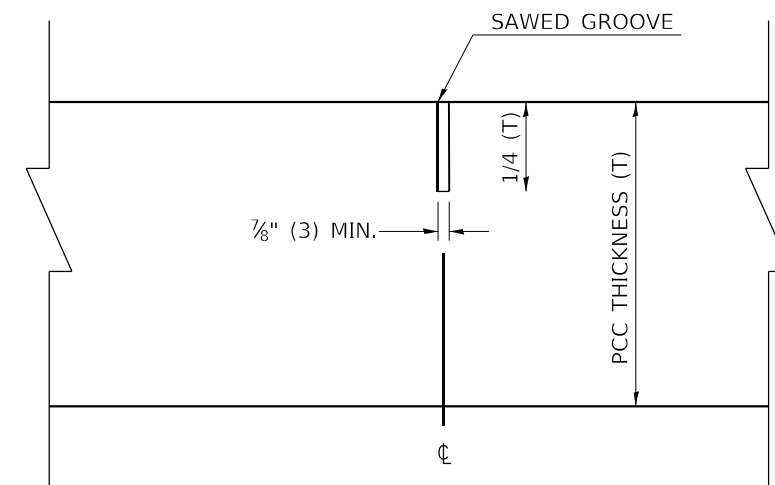
## GENERAL NOTES

LONGITUDINAL JOINTS SHALL BE AS DETAILED ON STANDARD 420001, EXCEPT TIE BARS ARE NOT REQUIRED FOR PATCHES 20'-0" (6.0 M) OR LESS IN LENGTH.

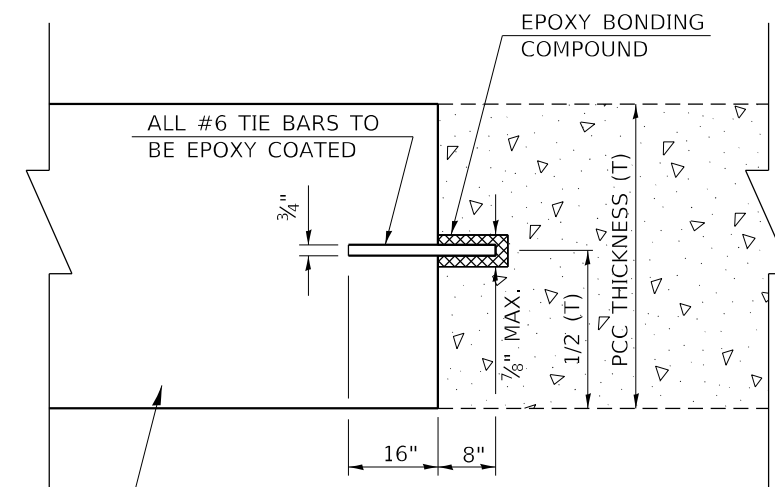
EXISTING TIE BARS SHALL BE EITHER CUT OR REMOVED. MARGINAL BARS SHALL BE CUT.

ALL DIMENSIONS ARE IN INCHES (MILLIMETERS) UNLESS OTHERWISE SHOWN.

WELDED WIRE REINFORCEMENT SHALL BE PLACED 3½" +/- 1 in. (90mm +/- 25mm) BELOW THE FINISHED PATCH SURFACE ELEVATION ACCORDING TO ARTICLE 420.08 IN AREAS AS SPECIFIED ACCORDING TO THE SCHEDULE OF QUANTITIES.



**DETAIL OF SAWED CONTRACTION JOINT**



CLASS C PATCHES (SPECIAL)

**DETAIL OF TIE BAR ANCHORING**

MODEL: Default  
 FILE NAME: p:\pub\mroom.dwg  
 PROJECT: 78851-CA00DataCAD\Projects\0778851-TYP\SECTIONS  
 OFFICE: District 9  
 PROJECT: 78851-CA00DataCAD\Projects\0778851-TYP\SECTIONS

USER NAME = TaylorND	DESIGNED -	REVISED -
	DRAWN -	REVISED -
PLOT SCALE = 2,0000' / in.	CHECKED -	REVISED -
PLOT DATE = 2/16/2021	DATE -	REVISED -

**STATE OF ILLINOIS  
DEPARTMENT OF TRANSPORTATION**

**PATCHING DETAILS**

SCALE: SHEET OF SHEETS STA. TO STA.

F.A.U. RTE.	SECTION	COUNTY	TOTAL SHEETS	SHEET NO.
9677	D9 PATCH 2021-5	JACKSON	7	7
CONTRACT NO. 78851				
ILLINOIS FED. AID PROJECT				