

STATE OF ILLINOIS
DEPARTMENT OF TRANSPORTATION

F.A.P. RTE	SECTION	COUNTY	TOTAL SHEETS	SHEET NO.
331	D9 PATCH 2021-6	JACKSON	9	J
		ILLINOIS	CONTRACT NO. 78853	

FOR INDEX OF SHEETS, SEE SHEET NO. 3
FOR SUMMARY OF QUANTITIES, SEE SHEET NO. 4 & 5

PROPOSED HIGHWAY PLANS

FAP ROUTE 331 (IL13)
SECTION D9 PATCH 2021-6
PATCHING
JACKSON COUNTY

C-99-041-21

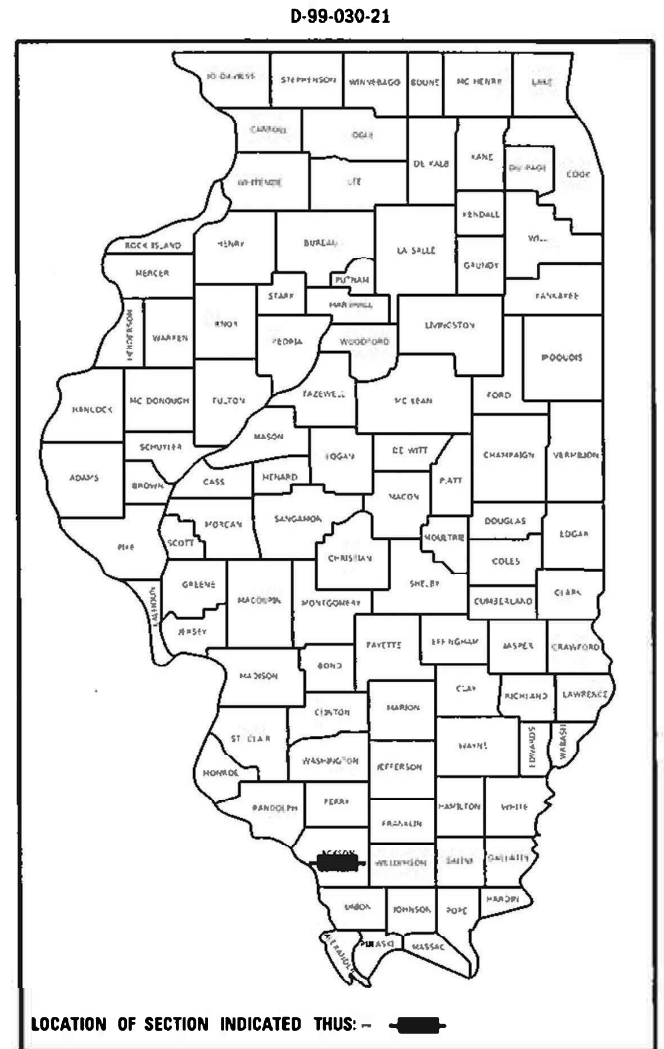
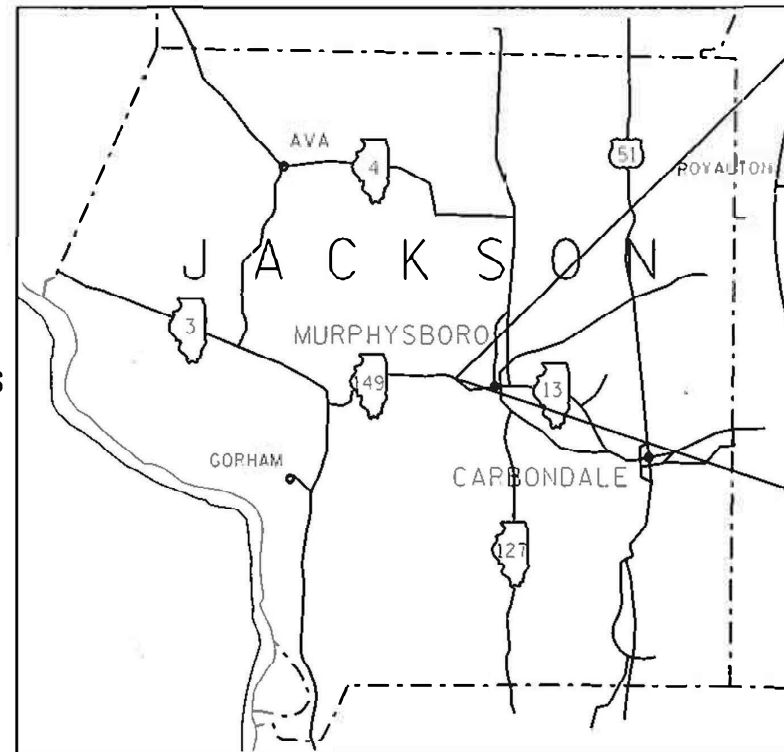
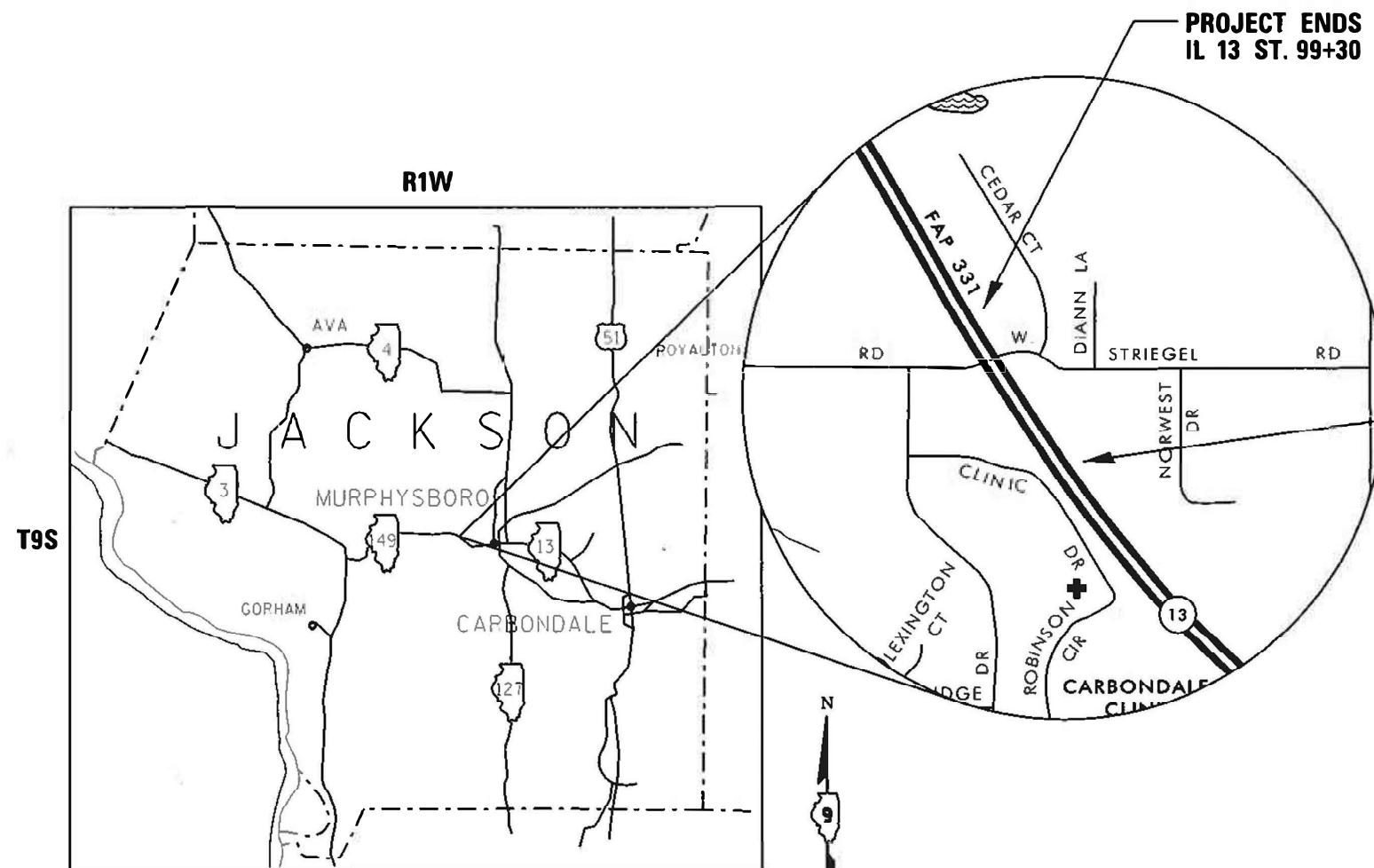
STATION EQUATION

95+80.35 BK = 96+09.81 AH

TRAFFIC DATA

2019 ADT 15,800 WITH 12% TRUCKS

TOWNSHIPS
CARBONDALE



J.U.L.I.E.
JOINT UTILITY LOCATION INFORMATION FOR EXCAVATORS
1-800-892-0123
OR 811

PROJECT ENGINEER SUSAN POE
PROJECT MANAGER JAKE WARREN

CONTRACT NO. 78853

GROSS LENGTH = 710 FT.
NET LENGTH = 710 FT.

PROJECT BEGINS
IL 13 ST. 92+20

PROJECT ENDS
IL 13 ST. 99+30

STATE OF ILLINOIS
DEPARTMENT OF TRANSPORTATION

SUBMITTED Jan 20 2021
Kurt Roberts REGIONAL ENGINEER

March 19, 2021 [Signature]
ENGINEER OF DESIGN AND ENVIRONMENT

March 19, 2021 [Signature]
DIRECTOR OF HIGHWAYS PROJECT IMPLEMENTATION

PRINTED BY THE AUTHORITY
OF THE STATE OF ILLINOIS

MODEL: Default
FILE NAME: I:\p\warren\proj\78853\CD\Drawings\CD\Sheet019.dwg
PROJECT: 78853 CD Patch Area Sheets.dgn

Prepared By: Charles Steen
DISTRICT STUDIES & PLANS ENGINEER

Examined By: Nancy Lee
DISTRICT LAND ACQUISITION ENGINEER

Examined By: Connie Nelson
DISTRICT PROGRAM DEVELOPMENT ENGINEER

Examined By: Kevin Kelly
DISTRICT OPERATIONS ENGINEER

Examined By: _____
DISTRICT PROJECT IMPLEMENTATION ENGINEER

Examined By: Douglas Mulford
DISTRICT CONSTRUCTION ENGINEER

Examined By: [Signature]
DISTRICT MATERIALS ENGINEER

USER NAME = warren	DESIGNED -	REVISED -
PLOT SCALE = 2 0000 ' / 1"	DRAWN -	REVISED -
PLOT DATE = 1/5/2021	CHECKED -	REVISED -
	DATE -	REVISED -

**STATE OF ILLINOIS
DEPARTMENT OF TRANSPORTATION**

SIGNATURE SHEET

SCALE: SHEET OF SHEETS STA. TO STA.

F.A.P. RTE.	SECTION	COUNTY	TOTAL SHEETS	SHEET NO.
331	D9 PATCH 2021-6	JACKSON	9	2
			CONTRACT NO. 78853	
ILLINOIS FED. AID PROJECT				

SUMMARY OF QUANTITIES

COUNTY:	JACKSON
ROUTE:	FAP 331
FUNDING:	100% STATE
LOCATION:	RURAL

CODE NUMBER	ITEM DESCRIPTION	UNIT	TOTAL QUANTITY	0004
44200549	CLASS A PATCHES, TYPE I, 10 INCH	SQ YD	4	4
44200553	CLASS A PATCHES, TYPE II, 10 INCH	SQ YD	38.3	38.3
44200559	CLASS A PATCHES, TYPE IV, 10 INCH	SQ YD	45	45
44200966	CLASS B PATCHES, TYPE I, 10 INCH	SQ YD	19	19
44200970	CLASS B PATCHES, TYPE II, 10 INCH	SQ YD	72	72
44201299	DOWEL BARS 1 1/2"	EACH	222	222
44213000	PATCHING REINFORCEMENT	SQ YD	312	312
44213200	SAW CUTS	FOOT	2,774	2,774
44213204	TIE BARS 3/4"	EACH	628	628
67100100	MOBILIZATION	L SUM	1.0	1.0
70100320	TRAFFIC CONTROL AND PROTECTION, STANDARD 701422	L SUM	1.0	1.0
70102635	TRAFFIC CONTROL AND PROTECTION, STANDARD 701701	L SUM	1.0	1.0
70107025	CHANGEABLE MESSAGE SIGN	CAL DA	42.0	42.0
70200100	NIGHTTIME WORK ZONE LIGHTING	L SUM	1.0	1.0

REV. - MS

I:\Projects\78853\CADD\Quantity\78853-SS-Sheets.dgn
 User: warrenj
 Plot Date: 1/12/2023

IL 13 AND STRIEGEL RD

STA.	STA.	LANE LOCATION	LENGTH	WIDTH		CLASS A PATCHES, TYPE I, 10 INCH	CLASS A PATCHES, TYPE II, 10 INCH	CLASS A PATCHES, TYPE IV, 10 INCH	CLASS B PATCHES, TYPE I, 10 INCH	CLASS B PATCHES, TYPE II, 10 INCH	PAVEMENT REPLACEMENT SPECIAL	SAW CUTS	PATCHING REINF.	DOWEL BARS 1 1/2"	TIE BARS 3/4"	NOTES
			FEET	FEET	SQYD	SQYD	SQYD	SQYD	SQYD	SQYD	SQYD	FOOT	SQYD	EACH	EACH	
92+20	To 92+28	WB-DL	8	12	10.7		10.7					72	10.7			
92+60	To 93+43	WB-TL	83	3-6	41.5						41.50	275	41.5		100	SEE DETAIL ON PAGE 9
93+43	To 97+84	WB-TL	412	4	183.2						183.20	1252	183.2		428	St. Eq. 95+80.35 BK = 96+09.81 AH
93+58	To 93+62	WB-TL	6	6	4				4.0			30		8		
93+83	To 93+87	WB-TL	6	6	4				4.0			30		8		
94+08	To 94+12	WB-TL	6	7	4.7				4.7			33		10		
94+58	To 94+62	WB-TL	6	10	6.7				6.7			42		16		
95+08	To 95+12	WB-TL	6	12	8					8.0		48		20		
95+30	To 95+34	WB-TL	6	12	8					8.0		48		20		
95+32	To 95+52	WB-PL	20	4	8.9		8.9					76	8.9			
95+36	To 95+42	WB-DL	6	6	4	4.0						42	4.0			
95+58	To 95+62	WB-TL	6	12	8					8.0		48		20		
96+37	To 96+41	WB-TL	6	12	8					8.0		48		20		
96+87	To 96+91	WB-TL	6	12	8					8.0		48		20		
97+37	To 97+41	WB-TL	6	12	8					8.0		48		20		
97+52	To 97+56	WB-TL	6	12	8					8.0		48		20		
97+66	To 97+72	WB-DL	6	12	8		8.0					66	8.0			
97+71	To 97+75	WB-TL	6	12	8					8.0		48		20		
97+87	To 97+91	WB-TL	6	12	8					8.0		48		20		
97+89	To 98+89	WB-DL	100	4	44.5			45				316	44.5		100	
99+26	To 99+30	WB-DL	4	24	10.7			10.7				108	10.7			
TOTAL						4	38.3	45	19.4	72	224.7	2774	311.5	222	628	

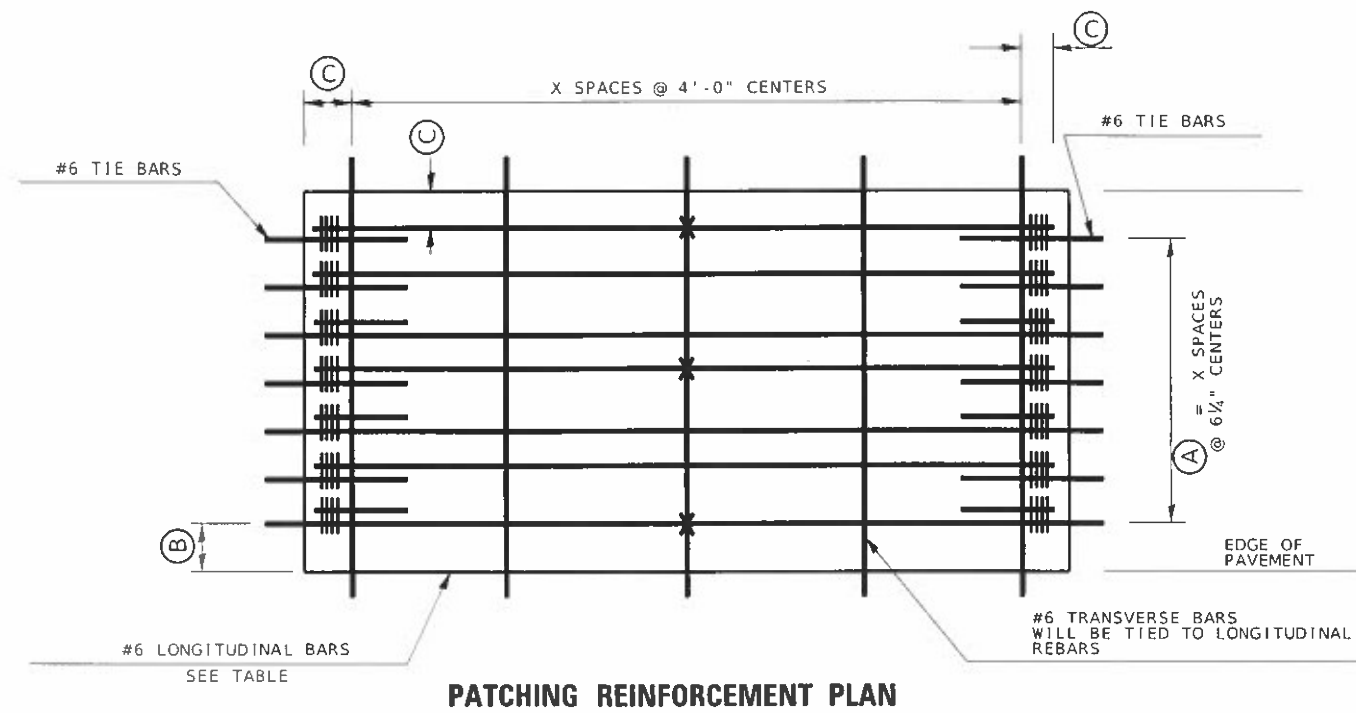
M:\0711_Doc\aut\...
 FILE NAME: pw\...

USER NAME = warren	DESIGNED -	REVISED -
PLOT SCALE = 2 0000' / in	DRAWN -	REVISED -
PLOT DATE = 3/12/2023	CHECKED -	REVISED -
	DATE -	REVISED -

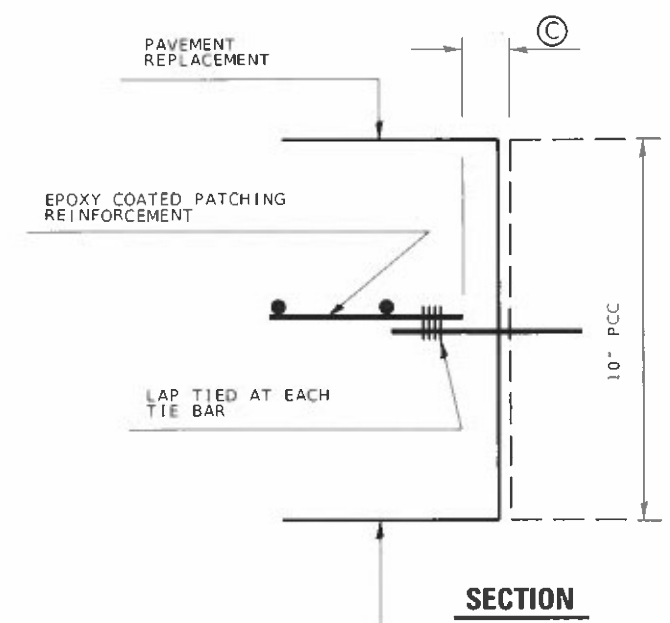
STATE OF ILLINOIS
DEPARTMENT OF TRANSPORTATION

PATCHING SCHEDULE			
SCALE	SHEET	OF	SHEETS
		STA.	TO STA.

F.A.P. RTE	SECTION	COUNTY	TOTAL SHEETS	SHEET NO.
331	D9 PATCH 2021-6	JACKSON	9	6
CONTRACT NO. 78853				
ILLINOIS FED. AID PROJECT				



PATCHING REINFORCEMENT PLAN

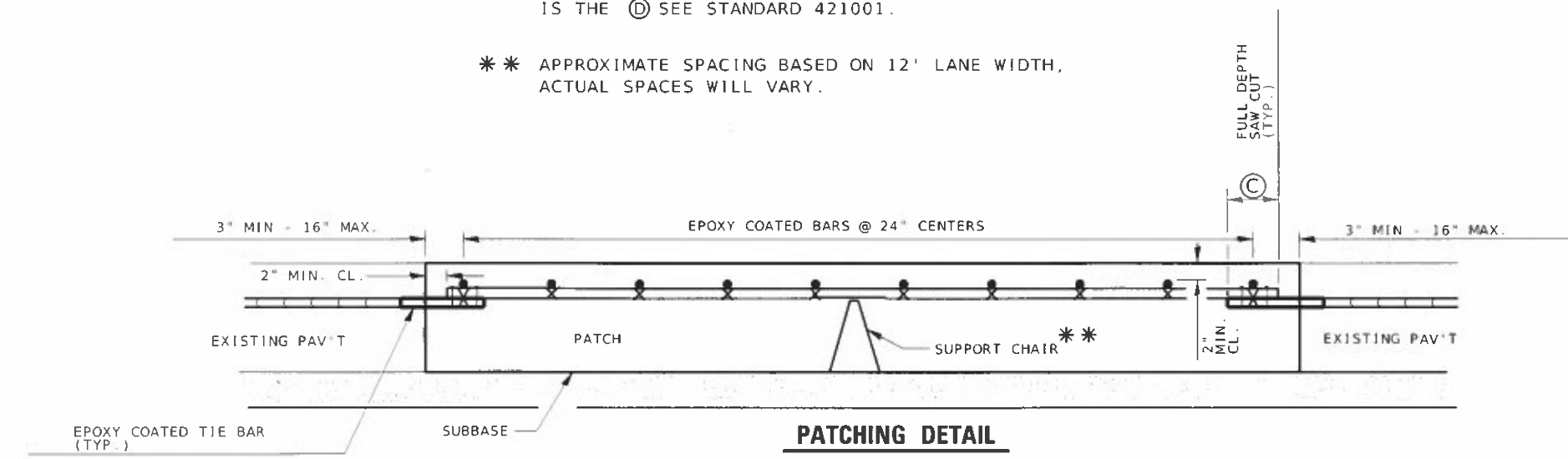


NOTE: IF LONGITUDINAL BARS ARE LONGER THAN 30' THEN (A) D LAP SPLICE WILL BE REQUIRED.

ALL DIMENSIONS ARE IN INCHES					
BAR SIZE	EXISTING PAVEMENT THICKNESS	(A) (APPROX. SPACING) *	(B)	(C)	(D) *
#6	7 1/4 THRU 8 1/2	18 SPACES (19 BARS) @ 7 3/8	3 1/2	3	22
#6	8 1/4 THRU 9 1/2	20 SPACES (21 BARS) @ 6 3/4	3 1/2	3	22
#6	9 1/4 THRU 10 1/2	22 SPACES (23 BARS) @ 6 1/4	3 1/2	3	22
#6	10 1/4 THRU 11 1/2	24 SPACES (25 BARS) @ 5 3/4	3 1/2	3	22
#6	11 1/4 THRU 12 1/2	27 SPACES (28 BARS) @ 5 1/4	3 1/2	3	22

* IF THE REPLACEMENT REQUIRES MORE THAN 1 BAR FOR THE LENGTH THE LAPPING REQUIRED IS THE (D) SEE STANDARD 421001.

** APPROXIMATE SPACING BASED ON 12' LANE WIDTH, ACTUAL SPACES WILL VARY.



EVERY THIRD INTERSECTION MUST BE TIED.

** SUPPORT CHAIRS WILL BE PLACED SUCH THAT UNIFORM UNSUPPORTED LENGTHS WILL NOT EXCEED 4'-0".

H:\001 - Detail File Name: p:\workroom\idp\illinois\pav\pav\DOT\Office\Struct\ByProject\78853\CADD\DrawCAD\Sheets\09-12-2021-Sheets.dgn

USER NAME = warrin	DESIGNED -	REVISED -
	DRAWN -	REVISED -
PLOT SCALE = 2 0000' / in	CHECKED -	REVISED -
PLOT DATE = 1/12/2021	DATE -	REVISED -

**STATE OF ILLINOIS
DEPARTMENT OF TRANSPORTATION**

PAVEMENT REPLACEMENT SPECIAL

SCALE: SHEET 2 OF 2 SHEETS STA. TO STA.

F.A.P. RTE. 331	SECTION D9 PATCH 2021-6	COUNTY JACKSON	TOTAL SHEETS 9	SHEET NO. 8
CONTRACT NO. 78853				
ILLINOIS FED. AID PROJECT				

