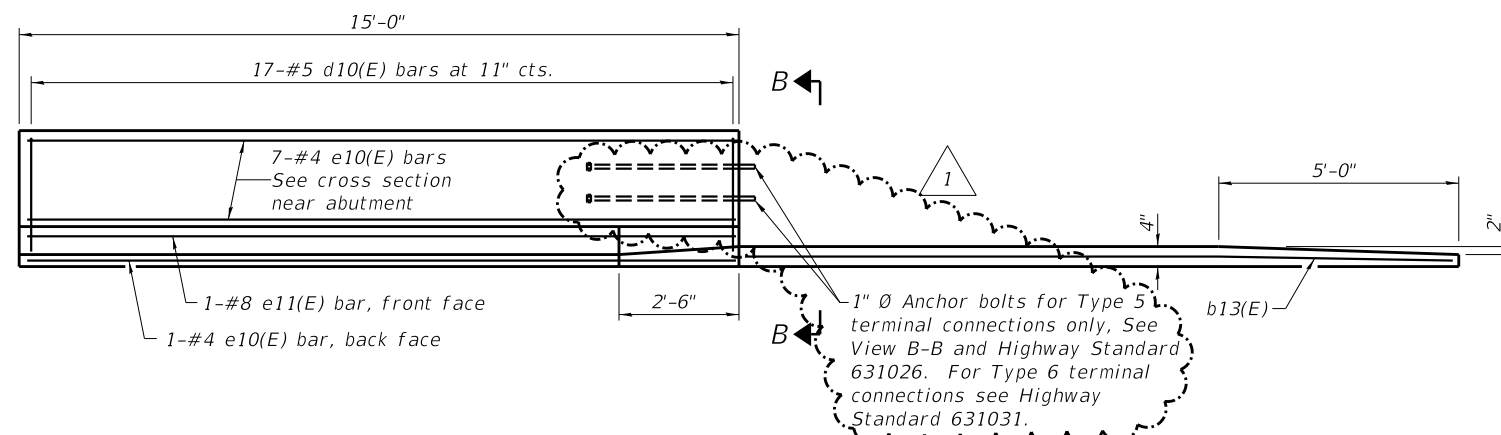
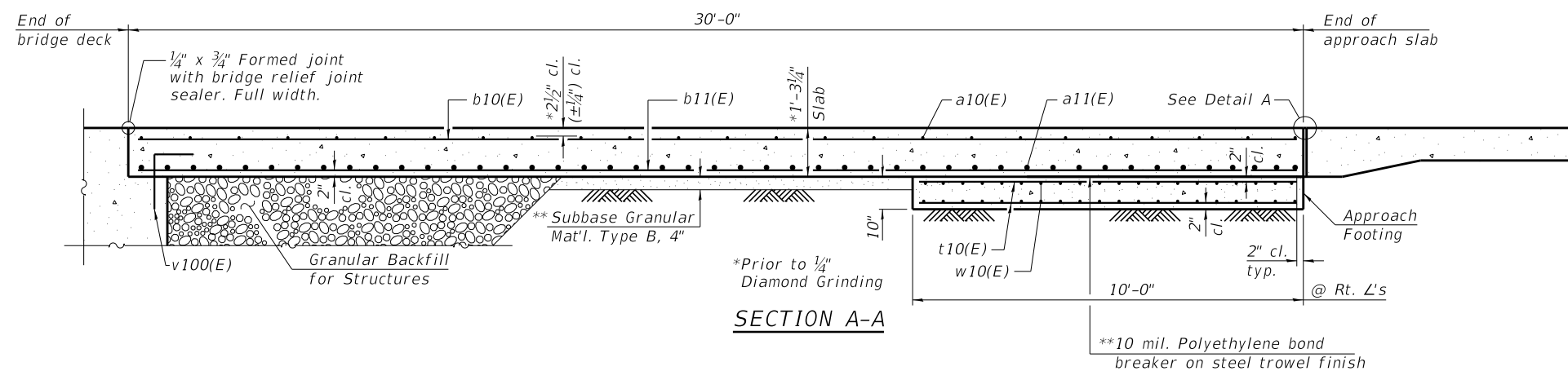


Notes:

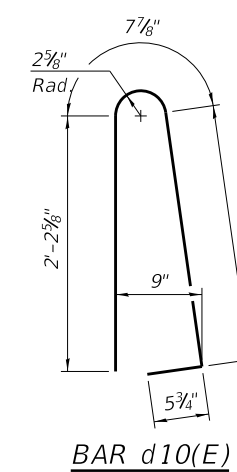
The joint opening shall be adjusted for temperature per Article 520.04 of the Standard Specifications. However, since this detail is for jointless structures, the length of bridge used to calculate the adjustment shall be equal to half the total bridge length plus the length of the bridge approach slab.
 Parapet concrete shall be paid for as Concrete Superstructure.
 Approach slab shall be paid for as Concrete Superstructure (Approach Slab).
 Approach footing concrete shall be paid for as Concrete Structures.
 The approach footing maximum applied service bearing pressure (Qmax) = 2.0 ksf.
 Cost of excavation for approach footing included with Concrete Structures.
 For Granular Backfill for Structures and drainage treatment details, see sheet of .



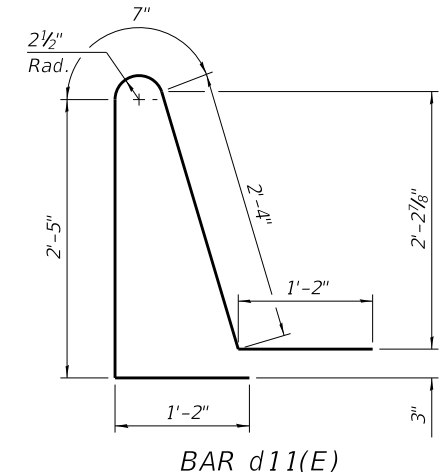
INSIDE ELEVATION OF PARAPET AND CURB



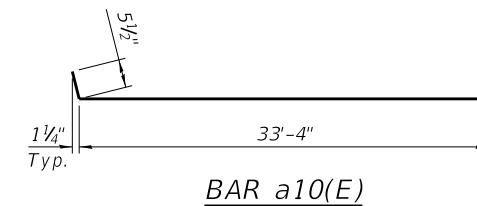
SECTION A-A



BAR d10(E)



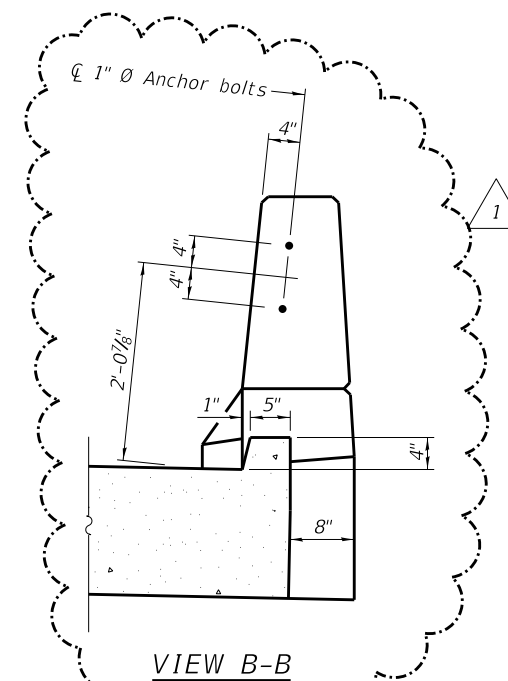
BAR d11(E)



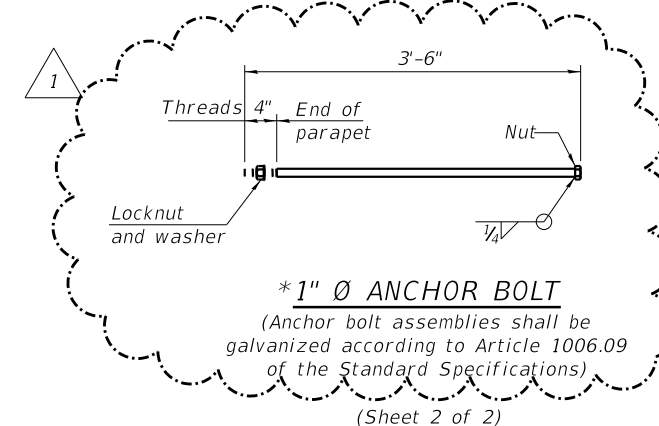
BAR a10(E)



BAR a12(E)



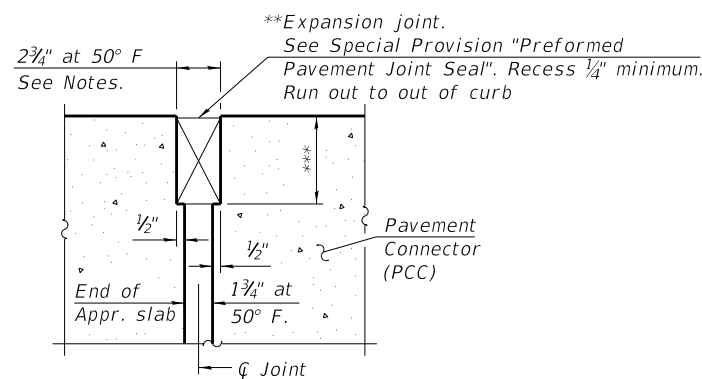
VIEW B-B



* 1" Ø ANCHOR BOLT
 (Anchor bolt assemblies shall be galvanized according to Article 1006.09 of the Standard Specifications)
 (Sheet 2 of 2)

TWO APPROACHES
 BILL OF MATERIAL

Bar	No.	Size	Length	Shape
a10(E)	92	#5	38'-10"	—
a11(E)	122	#8	38'-8"	—
a12(E)	92	#5	7'-4"	—
b10(E)	98	#5	29'-8"	—
b11(E)	156	#9	29'-8"	—
b12(E)	4	#5	14'-8"	—
b13(E)	4	#5	14'-8"	—
b14(E)	2	#4	15'-2"	—
b15(E)	2	#4	14'-1"	—
d10(E)	68	#5	5'-7"	U
d11(E)	68	#5	7'-8"	U
e10(E)	32	#4	14'-8"	—
e11(E)	4	#8	14'-8"	—
t10(E)	136	#4	11'-2"	—
w10(E)	80	#5	38'-8"	—
Concrete Superstructure			Cu. Yd.	6.7
Concrete Superstructure (Approach Slab)			Cu. Yd.	101.0
Concrete Structures			Cu. Yd.	24.1
Reinforcement Bars, Epoxy Coated			Pound	41,600



DETAIL A
 (@ Rt. L's)

** Cost included with Concrete Superstructure (Approach Slab).
 *** Per manufacturer recommendations

BAIA-CIP-34FS-L(≤30°) 8-11-2017

FILE NAME = I:\Municipalities\Champaign County\7314 CH 17 SN 010-4584 (existing) \CADD\CADD_Structural\Approach.dgn

USER NAME = rking	DESIGNED KEB	REVISED 1 - 4-5-21
PLOT TIME = 7:12:12 AM	DRAWN RLK	REVISED -
PLOT SCALE = 2:0 "/td> <td>CHECKED BCG</td> <td>REVISED -</td>	CHECKED BCG	REVISED -
PLOT DATE = 4/5/2021	DATE 8/12/20	REVISED -

CHASTAIN & ASSOCIATES LLC
 CONSULTING ENGINEERS

DECATUR, IL SCHAUMBURG, IL
 ROCKFORD, IL CHAMPAIGN, IL
 BENTON, IL LAFAYETTE, IN
 PADUCAH, KY
 (833) 424-2782 184-001397

BRIDGE APPROACH SLAB DETAILS
STRUCTURE NO. 010-4584

SHEET NO. 11 OF 23 SHEETS

FAU RTE	SECTION	COUNTY	TOTAL SHEETS	SHEET NO.
CH 17	18-00061-00-BR	CHAMPAIGN	35	19
	STRUCTURE NO. 010-4584	CONTRACT NO. 91601		

ILLINOIS FED. AID PROJECT