

F.A.S. NO.	SECTION	COUNTY	TOTAL SHEETS	SHEET NO.
582	18-00081-00-PP	SCHUYLER	33	1
583		ILLINOIS		CONTRACT NO. 93767

**STATE OF ILLINOIS**  
**DEPARTMENT OF TRANSPORTATION**  
**DIVISION OF HIGHWAYS**  
**PLANS FOR PROPOSED**  
**SURFACE TRANSPORTATION/RURAL PROGRAM**  
**SCHUYLER COUNTY**  
**FAS 582 & FAS 583**  
**SECTION 18-00081-00-PP**  
**COUNTY HIGHWAY 1 & COUNTY HIGHWAY 5**  
**PROJECT NO. ZF6B(543)**  
**JOB NO. C-96-003-21**

**INDEX OF SHEETS**

- 1 COVER SHEET
- 2 GENERAL NOTES, LEGEND, PAVEMENT DESIGN INFORMATION, SUMMARY OF QUANTITIES
- 3-4 TYPICAL SECTIONS, DETAILS
- 5-6 SUMMARY OF QUANTITIES
- 7-25 COUNTY HIGHWAY 5 - ROADWAY PLANS
- 26-31 COUNTY HIGHWAY 1 - ROADWAY PLANS
- 32-33 INTERSECTION PAVEMENT MARKING DETAILS



**REQUIRED STANDARDS**

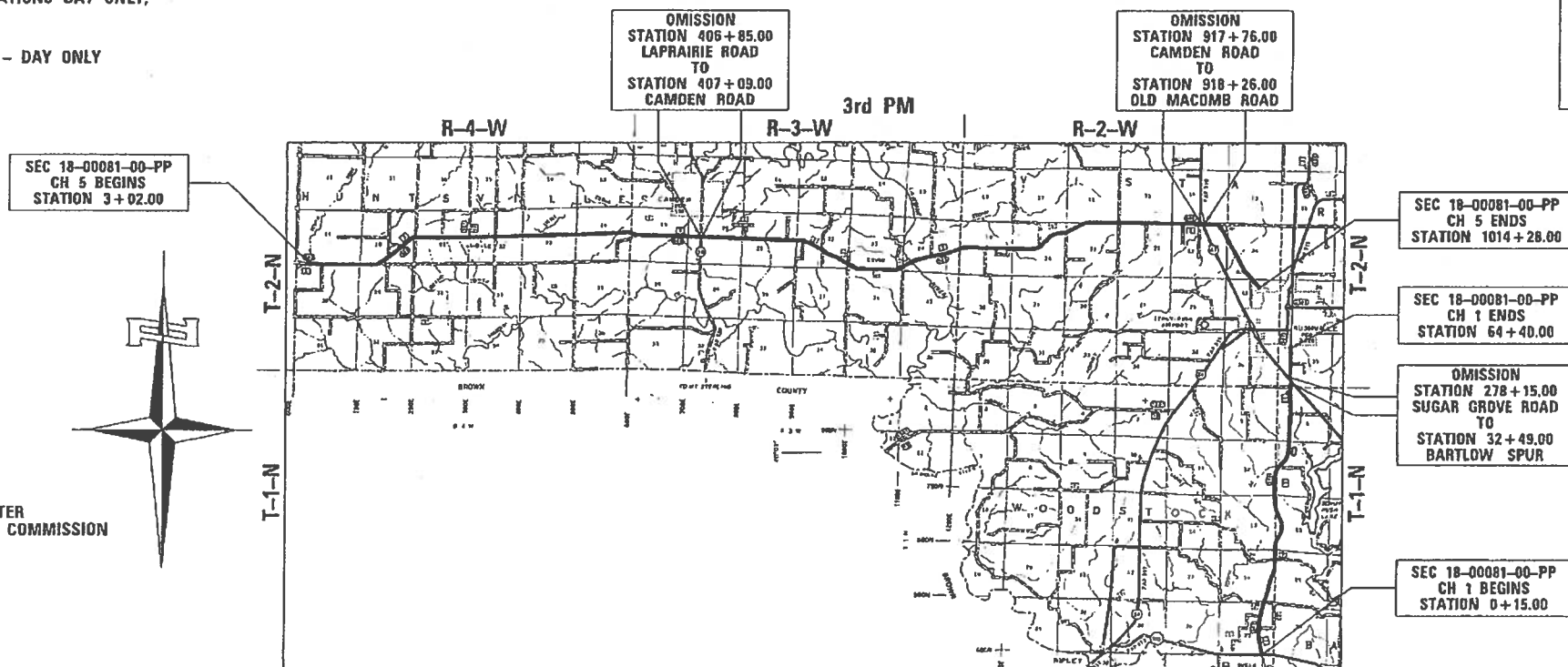
- 000001-08 STANDARD SYMBOLS, ABBREVIATIONS, AND PATTERNS
- 701006-05 OFF-RD OPERATIONS, 2L, 2W, 15' (4.5m) TO 24" (600mm) FROM PAVEMENT EDGE
- 701201-05 LANE CLOSURE, 2L, 2W, DAY ONLY, FOR SPEEDS > 45 MPH
- 701301-04 LANE CLOSURE, 2L, 2W, SHORT TERM OPERATIONS
- 701306-04 LANE CLOSURE 2L, 2W SLOW MOVING OPERATIONS DAY ONLY, FOR SPEEDS > 45MPH
- 701311-03 LANE CLOSURE 2L, 2W MOVING OPERATIONS - DAY ONLY
- 701901-08 TRAFFIC CONTROL DEVICES
- 780001-05 TYPICAL PAVEMENT MARKINGS

**GAS & ELECTRIC**  
 ADAMS ELECTRIC COOPERATIVE  
 AMEREN CIPS

**CABLE TV**  
 CASS CABLE TV, INC.

**TELEPHONE**  
 FRONTIER COMMUNICATIONS OF  
 SCHUYLER, INC.

**WATER & SEWER**  
 CITY OF RUSHVILLE WATER  
 CAMDEN-LITTLE WATER COMMISSION



**DESCRIPTION OF WORK**  
 THIS PROJECT CONSISTS OF A BITUMINOUS CAPE SEAL RESURFACING TO IMPROVE COUNTY HIGHWAY 5 AND COUNTY HIGHWAY 1. ALSO INCLUDED WILL BE PAVEMENT MARKING AND HMA SURFACE REMOVAL AND REPLACEMENT OVER SN 085-3053.

FULL SIZE PLANS HAVE BEEN PREPARED USING STANDARD ENGINEERING SCALES. REDUCED SIZE PLANS WILL NOT CONFORM TO STANDARD SCALES. IN MAKING MEASUREMENTS ON REDUCED PLANS THE ABOVE SCALES MAY BE USED.

**LOCATION MAP**

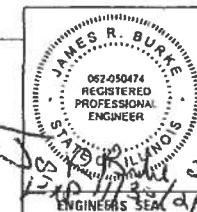
APPROXIMATE SCALE

GROSS LENGTH = 132,139.00 FT. = 25.026 MILE  
 NET LENGTH = 132,065 FT. = 25.012 MILE

**J.U.L.I.E.**  
 JOINT UTILITY LOCATION INFORMATION FOR EXCAVATION  
 1-800-892-0123 DR 811

**CONTRACT NO. 93767**

**HUTCHISON ENGINEERING, INC**  
 CONSULTING ENGINEERS  
 JACKSONVILLE, ILLINOIS  
 2021 JOB NO 4745



APPROVED *[Signature]* 20 21  
 SCHUYLER COUNTY ENGINEER

PASSED *[Signature]* 20 21  
 DISTRICT SIX ENGINEER OF LOCAL ROADS & STREETS

Releasing For Bid Based on Limited Review *[Signature]* 20 21  
 DEPUTY DIRECTOR OF HIGHWAYS, REGION FOUR ENGINEER

STATE OF ILLINOIS  
 DEPARTMENT OF TRANSPORTATION

PLOT DATE = 2/18/2021  
 FILE NAME = 18-00081-00-PP-CH-1-PP-PLAN-1.dwg  
 PLOT SCALE = 1/8"=1'-0"  
 USER NAME = C:\Users\jrburk

**GENERAL NOTES**

- FOR THE CAPE SEAL, CA 16 SHALL BE UTILIZED FOR THE A-1 SURFACE TREATMENT.
- THE LOCATION OF UNDERGROUND UTILITIES SHOWN ON THE PLANS REPRESENTS THE BEST KNOWLEDGE OF THE COUNTY AND THE INDICATED ADJUSTMENTS OR RECONSTRUCTION ARE CONSIDERED TO BE REASONABLY ACCURATE. IT SHALL BE THE CONTRACTOR'S RESPONSIBILITY TO VERIFY LOCATIONS OF UNDERGROUND INSTALLATIONS BEFORE STARTING CONSTRUCTION OPERATIONS. THE CONTRACTOR SHALL INDEMNIFY THE COUNTY, ITS OFFICERS, AND EMPLOYEES AGAINST ALL CLAIMS DUE TO DAMAGE TO CORPORATE OR PRIVATE PROPERTY RESULTING FROM HIS CONSTRUCTION OPERATIONS AS DESCRIBED IN ARTICLE 107.20 AND 107.26 OF THE STANDARD SPECIFICATIONS FOR ROAD AND BRIDGE CONSTRUCTION.
- THE CONTRACTOR SHALL NOTIFY THE AGENCIES AND UTILITIES AT LEAST 10 (TEN) DAYS PRIOR TO ANY CONSTRUCTION IN THE AREA AND SHALL COMPLY WITH ALL RESTRICTIONS FOR EQUIPMENT MOVEMENTS AND CLEARANCES AS REGARDS TO THEIR FACILITIES.
- BEFORE STARTING ANY EXCAVATION, THE CONTRACTOR MUST CALL J.U.L.I.E. AT 1-800-892-0123 FOR FIELD LOCATIONS OF BURIED ELECTRICAL, TELEPHONE, GAS FACILITIES, AND ALL PUBLIC UTILITIES. A 48 HOUR NOTIFICATION IS REQUIRED.
- WHENEVER IT IS NECESSARY TO REMOVE BITUMINOUS AGGREGATE MIXTURE, OIL AND CHIP SURFACE, EXISTING GRAVEL OR CRUSHED STONE BASE COURSE, IT SHALL BE REMOVED AT THE EXPENSE OF THE CONTRACTOR. NO ADDITIONAL COMPENSATION WILL BE ALLOWED FOR ADDITIONAL LABOR OR EQUIPMENT REQUIRED.
- WHEN DURING CONSTRUCTION OPERATIONS ANY LOOSE MATERIAL IS DEPOSITED IN THE FLOW LINE OF DITCHES, GUTTER OR DRAINAGE STRUCTURES SO THAT THE NATURAL FLOW OF WATER IS OBSTRUCTED, IT SHALL BE REMOVED AT THE CLOSE OF EACH WORKING DAY. AT THE CONCLUSION OF THE CONSTRUCTION OPERATIONS, ALL DRAINAGE STRUCTURES SHALL BE FREE FROM ALL DIRT AND DEBRIS. THIS WORK WILL NOT BE PAID FOR SEPARATELY BUT SHALL BE INCLUDED IN THE COST OF THE HOT-MIX ASPHALT PAVING.
- THE CONTRACTOR SHALL BE REQUIRED TO PROVIDE ACCESS TO ABUTTING PROPERTY AT ALL TIMES DURING THE CONSTRUCTION OF THIS IMPROVEMENT.
- TRAFFIC CONTROL SIGNS REMOVED MUST BE RESET AT THEIR PERMANENT LOCATIONS IN A WORKMANLIKE MANNER AND VISIBLE TO TRAFFIC ON THE ROADWAY. THESE SIGNS SHALL BE INSTALLED IN ACCORDANCE WITH THE 'MANUAL ON UNIFORM TRAFFIC CONTROL DEVICES FOR STREET AND HIGHWAYS', LATEST EDITION. THE COST OF SUCH WORK SHALL BE INCLUDED IN THE COST OF THE CAPE SEAL.
- THE NOMINAL THICKNESS FOR THE SURFACE COURSE IS SHOWN ON THE SPECIAL DETAIL. THE CONSTRUCTED THICKNESS OF THE ABOVE ITEMS SHALL NOT BE LESS THAN 90 PER CENT OF THE NOMINAL THICKNESS AT ANY LOCATION.
- WHERE SECTION OR SUBSECTION STONES OR MARKERS ARE ENCOUNTERED, THE ENGINEER SHALL BE NOTIFIED BEFORE SUCH STONES ARE REMOVED. THE CONTRACTOR SHALL PROTECT AND CAREFULLY PRESERVE ALL PROPERTY MARKERS UNTIL THE OWNER, AN AUTHORIZED SURVEYOR, OR AGENT HAS WITNESSED OR OTHERWISE REFERENCED THEIR LOCATION.
- ALL PROPOSED PAVEMENT WIDTHS ARE MEASURED EDGE TO EDGE OF PAVEMENT UNLESS OTHERWISE SHOWN ON THE PLANS. INTERSECTION RETURN RADII ARE MEASURED TO THE EDGE OF PAVEMENT.
- IT IS THE RESPONSIBILITY OF THE CONTRACTOR TO MAKE A RECORD OF THE NO PASSING ZONE PAVEMENT MARKING LIMITS PRIOR TO THE APPLICATION OF THE CAPE SEAL. THE COST OF SUCH WORK SHALL BE INCLUDED IN THE COST OF THE PAVEMENT MARKING.
- KNOWN UTILITIES LOCATED WITHIN THE LIMITS OF THIS IMPROVEMENT ARE:  
 ADAMS ELECTRIC COOP                      AMEREN CIPS  
 CASSCOMM                                      FRONTIER COMMUNICATIONS  
 CITY OF RUSHVILLE WATER              CAMDEN-LITTLE WATER COMMISSION

**LEGEND**

 HOT-MIX ASPHALT SURFACE REMOVAL, 2"

**HOT-MIX ASPHALT MIXTURE REQUIREMENTS**

	HMA SURFACE
PG GRADE:	PG 64-22
DESIGN AIR VOIDS:	4% @ N50
MIXTURE COMPOSITION:	IL-9.5
FRICTION AGGREGATE:	MIXTURE C
QUALITY MANAGEMENT PROGRAM:	QC/QA

CODE NO.	ITEM	UNIT	TOTAL QUANTITY	CONSTR. CODE
				SCHUYLER COUNTY ROADWAY 0005 RURAL
* 40500061	CAPE SEAL	SQ YD	329456	329456
40600290	BITUMINOUS MATERIALS (TACK COAT)	POUND	475	475
40604050	HOT-MIX ASPHALT SURFACE COURSE, IL-9.5, MIX "C", N50	TON	127	127
* 44000157	HOT-MIX ASPHALT SURFACE REMOVAL, 2"	SQ YD	1055	1055
67100100	MOBILIZATION	L SUM	1	1
70300100	SHORT TERM PAVEMENT MARKING	FOOT	13204	13204
70300150	SHORT TERM PAVEMENT MARKING REMOVAL	SQ FT	4401	4401
* X7010216	TRAFFIC CONTROL AND PROTECTION, (SPECIAL)	L SUM	1	1
Δ * X7800800	HOT SPRAY THERMOPLASTIC PAVEMENT MARKING - LETTERS AND SYMBOLS	SQ FT	31.2	31.2
Δ * X7800825	HOT SPRAY THERMOPLASTIC PAVEMENT MARKING LINE - 5 INCH	FOOT	142833	142833
Δ * X7800835	HOT SPRAY THERMOPLASTIC PAVEMENT MARKING LINE - 6 INCH	FOOT	66	66
Δ * X7800845	HOT SPRAY THERMOPLASTIC PAVEMENT MARKING LINE - 8 INCH	FOOT	329	329
Δ * X7800855	HOT SPRAY THERMOPLASTIC PAVEMENT MARKING LINE - 12 INCH	FOOT	729	729
Δ * X7800870	HOT SPRAY THERMOPLASTIC PAVEMENT MARKING LINE - 24 INCH	FOOT	170	170
# 20076600	TRAINEES	Hour	1000	
# 20076604	TRAINEES TRAINING PROGRAM GRADUATE	Hour	1000	

\* SEE SPECIAL PROVISIONS  
 Δ SPECIALTY ITEMS  
 # = 0042

MODEL: \$MODELNAME\$ FILE NAME: V:\1715 - Pavement Preservation\Schuyler\CAD\CADD Sheets\1715-G001.dgn

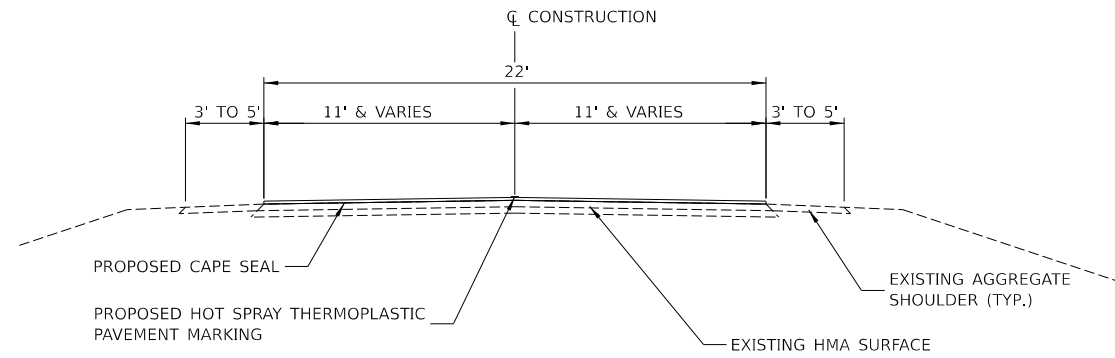
USER NAME = CThomas	DESIGNED -	REVISED -
	DRAWN -	REVISED -
PLOT SCALE = 100.0000' / in.	CHECKED -	REVISED -
PLOT DATE = 1/7/2021	DATE -	REVISED -

**SCHUYLER COUNTY  
 CH 1 & CH 5 PAVEMENT PRESERVATION**

**GENERAL NOTES, LEGEND, PAVEMENT DESIGN INFORMATION,  
 SUMMARY OF QUANTITIES**

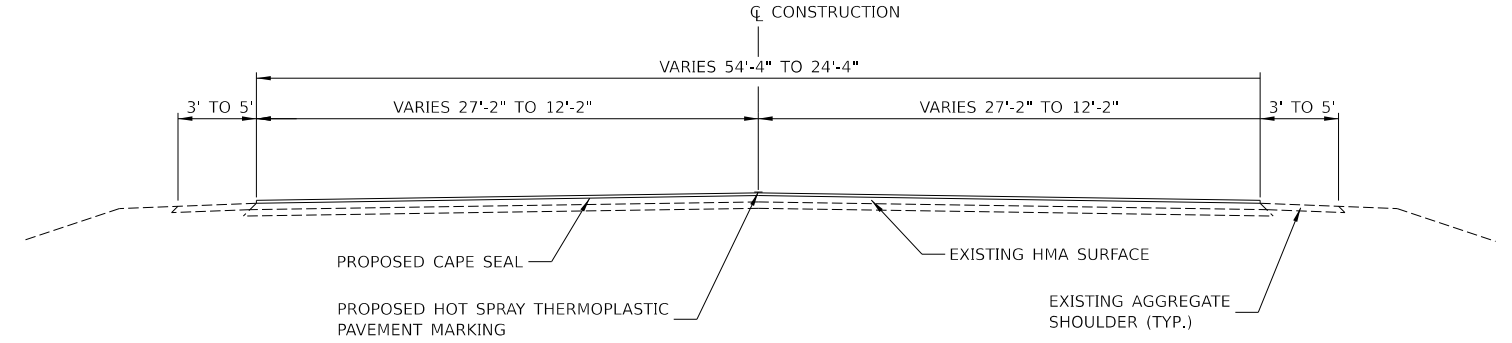
F.A.S. RTE. 388	SECTION 18-00081-00-PP	COUNTY SCHUYLER	TOTAL SHEETS 33	SHEET NO. 2
CONTRACT NO. 93767				
ILLINOIS FED. AID PROJECT				

SCALE: NONE SHEET 1 OF 1 SHEETS STA. TO STA.



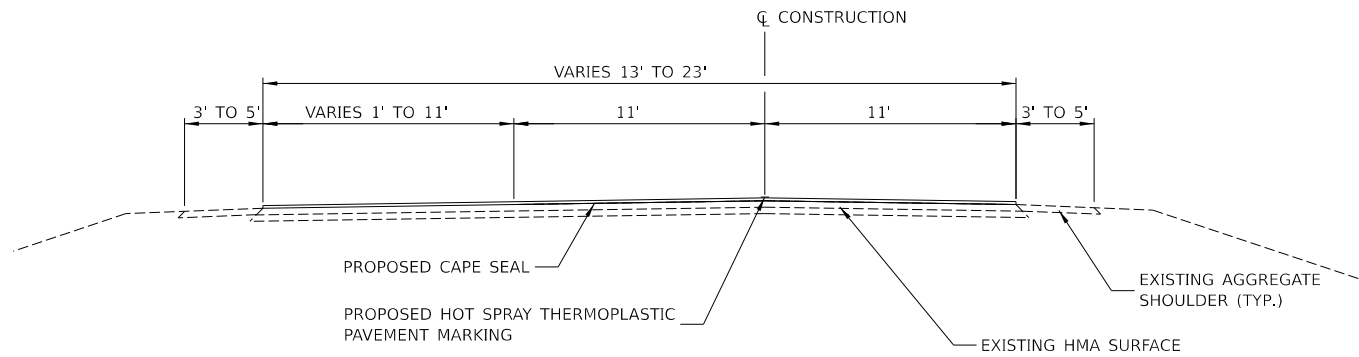
**TYPICAL SECTION - 1**

LAPRAIRIE ROAD  
 STA 3+02.00 TO STA 406+85.00  
 OMISSION  
 STA 406+85.00 TO STA 407+09.00  
 CAMDEN ROAD  
 STA 407+09.00 TO STA 916+41.00



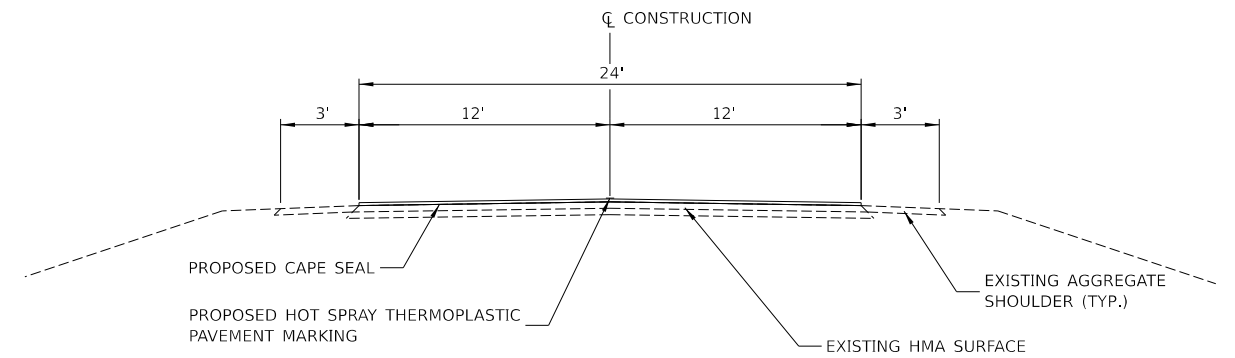
**TYPICAL SECTION - 3**

OLD MACOMB ROAD  
 STA 918+26.00 TO STA 924+61.00



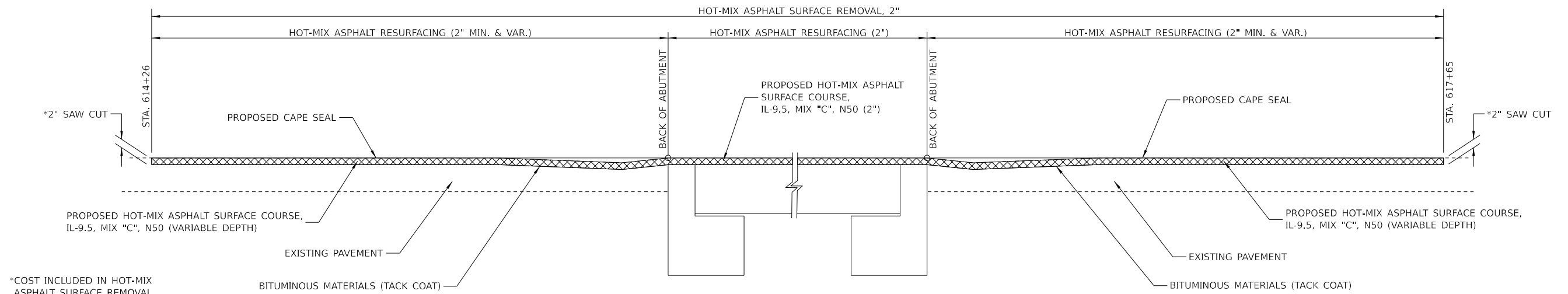
**TYPICAL SECTION - 2**

CAMDEN ROAD  
 STA 916+41.00 TO STA 917+76.00



**TYPICAL SECTION - 4**

OLD MACOMB ROAD  
 STA 924+61.00 TO STA 1014+28.00



**SURFACE REMOVAL AND PAVING DETAIL**

MODEL: 140901.MXD  
 FILE NAME: 031715 - Pavement Preservation (Schuyler)CADD\_Sheets/4745-1001.dgn

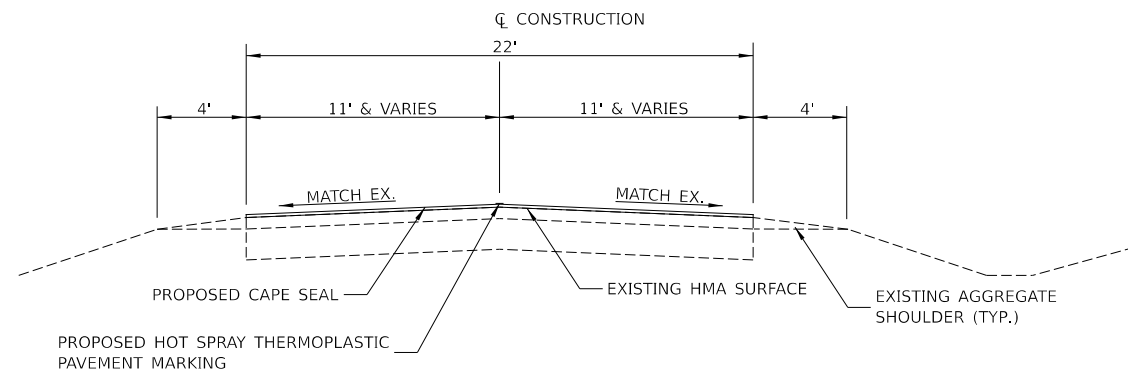
USER NAME = CThomas	DESIGNED -	REVISED -
	DRAWN -	REVISED -
PLOT SCALE = 2,0000' / in.	CHECKED -	REVISED -
PLOT DATE = 1/8/2021	DATE -	REVISED -

**SCHUYLER COUNTY  
 CH 1 & CH 5 PAVEMENT PRESERVATION**

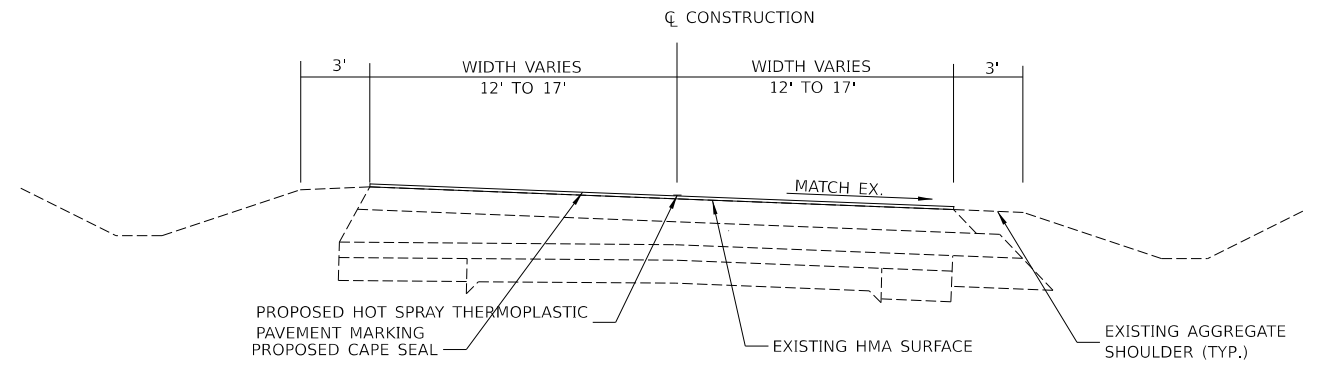
**TYPICAL SECTIONS AND DETAILS  
 COUNTY HIGHWAY 5**

SCALE: NONE SHEET 1 OF 2 SHEETS STA. 3+02.00 TO STA. 1014+28.00

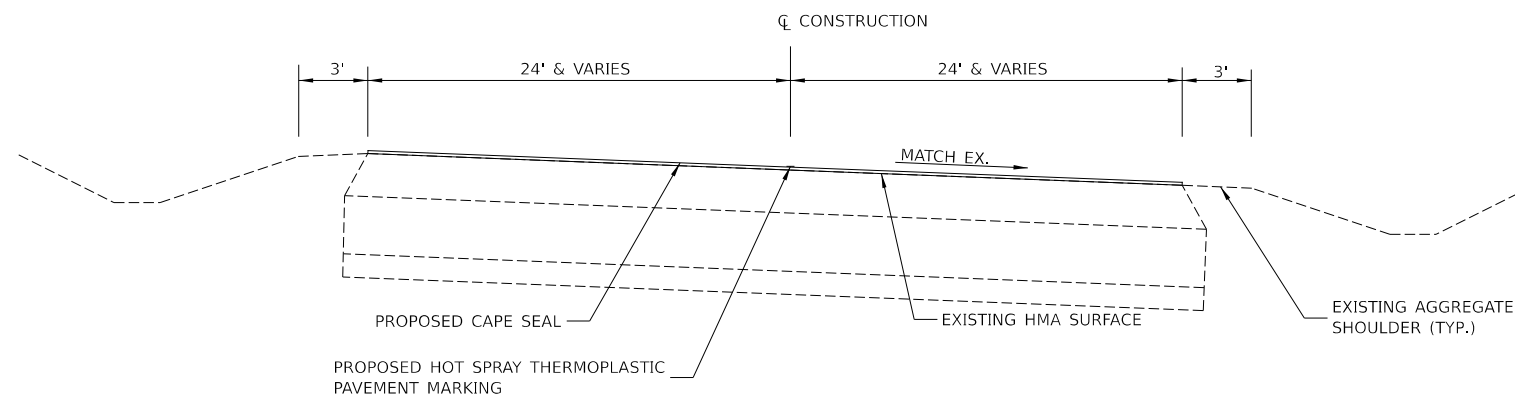
F.A.S. RTE.	SECTION	COUNTY	TOTAL SHEETS	SHEET NO.
583	18-00081-00-PP	SCHUYLER	33	3
CONTRACT NO. 93767			ILLINOIS FED. AID PROJECT	



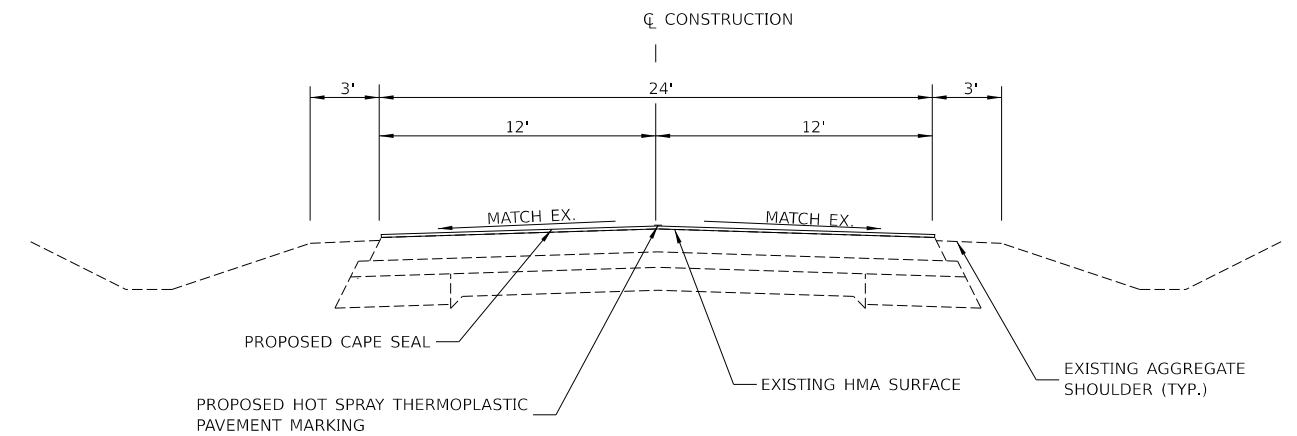
**TYPICAL SECTION - 5**  
SUGAR GROVE ROAD  
STA 0+15.00 TO STA 278+15.00



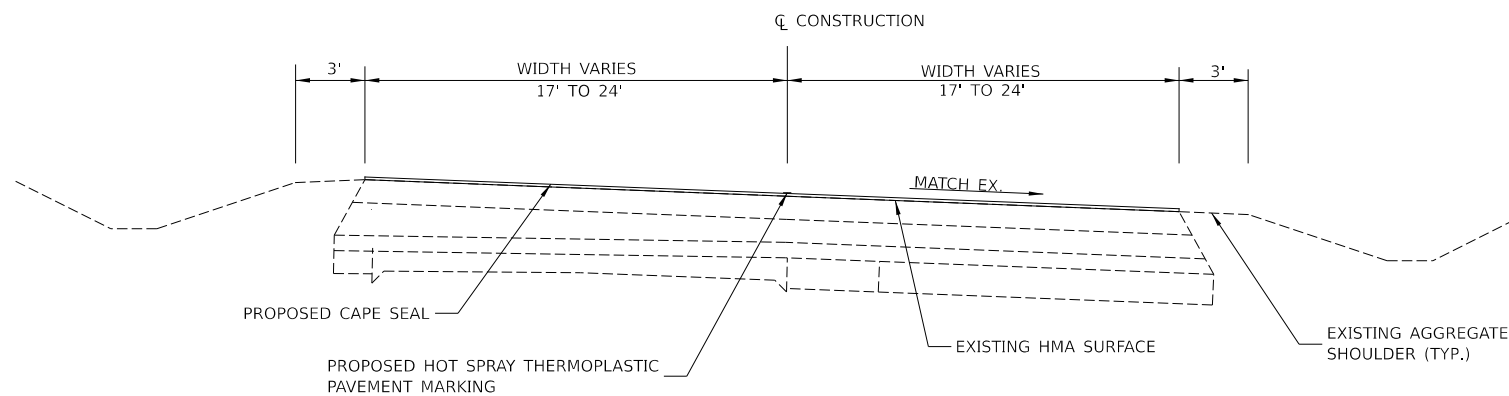
**TYPICAL SECTION - 8**  
BARTLOW SPUR  
STA 38+75.00 TO STA 39+81.00



**TYPICAL SECTION - 6**  
BARTLOW SPUR  
STA 32+49.00 TO STA 35+40.00



**TYPICAL SECTION - 9**  
BARTLOW SPUR  
STA 39+81.00 TO STA 64+41.00



**TYPICAL SECTION - 7**  
BARTLOW SPUR  
STA 35+40.00 TO STA 38+75.00

MODEL: 140821.MXD  
FILE NAME: C:\1745 - Pavement Preservation\Schuyler\CADD\CADD\_Sheets\1745-1002.dgn

USER NAME = CThomas	DESIGNED -	REVISED -
	DRAWN -	REVISED -
PLOT SCALE = 2,000' / in.	CHECKED -	REVISED -
PLOT DATE = 1/7/2021	DATE -	REVISED -

**SCHUYLER COUNTY  
CH 1 & CH 5 PAVEMENT PRESERVATION**

**TYPICAL SECTIONS  
COUNTY HIGHWAY 1**

SCALE: NONE SHEET 2 OF 2 SHEETS STA. 0+15.00 TO STA. 64+41.00

F.A.S. RTE.	SECTION	COUNTY	TOTAL SHEETS	SHEET NO.
582	18-00081-00-PP	SCHUYLER	33	4
CONTRACT NO. 93767			ILLINOIS FED. AID PROJECT	

PAVEMENT MARKING SCHEDULE											
STATION TO STATION	DESCRIPTION	HOT-SPRAY THERMOPLASTIC PAVEMENT MARKING								LETTERS & SYMBOLS	
		5"		6"		8"		12"			24"
		YELLOW	WHITE	WHITE	WHITE	YELLOW	WHITE	WHITE	WHITE		
FOOT									SQ FT		
<b>LAPRAIRIE ROAD (CH 5)</b>											
3+02	76+48	SKIP-DASH	1837								
3+02	3+78	WB NPZ	76								
23+92	37+87	EB NPZ	1395								
37+87	47+76	WB NPZ	989								
70+01	87+98	EB NPZ	1797								
76+48	87+98	WB NPZ	1150								
87+98	114+85	SKIP-DASH	672								
109+69	129+93	EB NPZ	2024								
114+85	129+93	WB NPZ	1508								
129+93	177+95	SKIP-DASH	1201								
170+19	179+82	EB NPZ	963								
177+95	189+46	WB NPZ	1151								
179+82	203+91	SKIP-DASH	602								
189+46	206+23	EB NPZ	1677								
203+91	214+50	WB NPZ	1059								
206+23	233+48	SKIP-DASH	681								
214+50	222+73	EB NPZ	823								
223+96	249+76	WB NPZ	2580								
233+48	240+85	EB NPZ	737								
240+85	265+29	SKIP-DASH	611								
256+65	266+53	EB NPZ	988								
265+29	277+99	WB NPZ	1270								
266+53	330+95	SKIP-DASH	1611								
301+77	309+73	EB NPZ	796								
309+73	322+91	WB NPZ	1318								
322+91	350+88	EB NPZ	2797								
330+95	360+90	WB NPZ	2995								
350+88	399+63	SKIP-DASH	1219								
399+63	406+51	WB NPZ	688								
399+63	406+51	EB NPZ	688								
406+51	STOP BAR								24		
<b>CAMDEN ROAD (CH 5)</b>											
407+52	STOP BAR								18		
407+52	422+28	EB NPZ	1476								
407+52	431+15	WB NPZ	2363								
422+28	496+80	SKIP-DASH	1863								
484+73	491+89	EB NPZ	716								
493+86	514+30	WB NPZ	2044								
496+80	518+93	EB NPZ	2213								
514+30	526+07	SKIP-DASH	294								
520+84	530+55	EB NPZ	971								
526+07	529+28	WB NPZ	321								
529+28	566+63	SKIP-DASH	934								
535+14	540+88	WB NPZ	574								
556+85	566+90	EB NPZ	1005								
566+63	577+91	WB NPZ	1128								
566+90	575+92	SKIP-DASH	226								
575+92	586+18	EB NPZ	1026								

PAVEMENT MARKING SCHEDULE (CONT.)											
STATION TO STATION	DESCRIPTION	HOT-SPRAY THERMOPLASTIC PAVEMENT MARKING								LETTERS & SYMBOLS	
		5"		6"		8"		12"			24"
		YELLOW	WHITE	WHITE	WHITE	YELLOW	WHITE	WHITE	WHITE		
FOOT									SQ FT		
<b>CAMDEN ROAD (CH 5)</b>											
577+91	603+64	SKIP-DASH	643								
586+18	595+21	WB NPZ	903								
595+60	629+18	EB NPZ	3358								
603+64	635+67	WB NPZ	3203								
629+18	663+14	SKIP-DASH	849								
654+29	678+18	EB NPZ	2389								
663+14	686+47	WB NPZ	2333								
678+18	734+77	SKIP-DASH	1415								
686+47	695+00	EB NPZ	853								
696+88	703+69	WB NPZ	681								
703+69	717+35	EB NPZ	1366								
729+25	736+15	WB NPZ	690								
734+77	768+49	EB NPZ	3372								
736+15	744+78	SKIP-DASH	216								
744+78	777+20	WB NPZ	3242								
768+49	786+26	SKIP-DASH	444								
777+20	802+56	EB NPZ	2536								
786+26	812+37	WB NPZ	2611								
802+56	917+41	SKIP-DASH	2871								
887+02	893+65	EB NPZ	663								
895+84	903+68	WB NPZ	784								
917+41	STOP BAR								16		
<b>OLD MACOMB ROAD (CH 5)</b>											
918+41	STOP BARS								22		
918+23	924+61	MEDIAN	2377	137	66	65	156	34		31.2	
924+61	944+52	WB NPZ	1991								
924+61	938+24	EB NPZ	1363								
938+24	958+16	SKIP-DASH	498								
948+01	988+45	EB NPZ	4044								
958+16	998+65	WB NPZ	4049								
988+45	1014+28	SKIP-DASH	646								
<b>SUGAR GROVE ROAD (CH 1)</b>											
0+38	STOP BAR								22		
0+38	9+00	NB NPZ	862								
0+38	26+00	SB NPZ	2562								
9+00	154+00	SKIP-DASH	3625								
136+00	272+83	NB NPZ	13683								
154+00	277+83	SB NPZ	12383								
277+68	278+05	INTERSECTION				122		56			
277+83	STOP BARS								31		
<b>BARTLOW SPUR (CH 1 EXT)</b>											
32+79	STOP BAR								37		
32+56	39+91	MEDIAN	2986			142	403	80			
39+91	41+93	NB NPZ	202								
39+91	43+75	SB NPZ	384								
41+93	64+40	SKIP-DASH	562								
<b>TOTAL</b>			<b>142696</b>	<b>137</b>	<b>66</b>	<b>329</b>	<b>559</b>	<b>170</b>	<b>170</b>	<b>31.2</b>	
<b>USE</b>			<b>142833</b>	<b>66</b>	<b>329</b>	<b>729</b>	<b>170</b>	<b>170</b>	<b>31.2</b>		

MODEL: 4400BELMARKS  
 FILE NAME: 031745 - Pavement Preservation (Schuyler)CADD\_Sheets\4745-5CHIED01.dgn

USER NAME = CThomas	DESIGNED -	REVISED -
	DRAWN -	REVISED -
PLOT SCALE = 2,0000' / in.	CHECKED -	REVISED -
PLOT DATE = 1/7/2021	DATE -	REVISED -

**SCHUYLER COUNTY  
CH 1 & CH 5 PAVEMENT PRESERVATION**

**SCHEDULES OF QUANTITIES**

SCALE: NONE    SHEET 1 OF 2 SHEETS    STA.    TO STA.

F.A.S. RTE.	SECTION	COUNTY	TOTAL SHEETS	SHEET NO.
582 583	18-00081-00-PP	SCHUYLER	33	5
CONTRACT NO. 93767			ILLINOIS FED. AID PROJECT	

CAPE SEAL SCHEDULE				
STATION TO STATION		WIDTH	LENGTH	CAPE SEAL SQ YD
<b>LAPRAIRIE ROAD (CH 5)</b>				
3+02	405+84	22'	40282'	98467
405+84	406+85	VARIES	101'	620
<b>CAMDEN ROAD (CH 5)</b>				
407+09	407+61	VARIES	52'	315
407+61	916+41	22'	50880'	124373
916+41	917+76	VARIES	152'	509
<b>OLD MACOMB ROAD (CH 5)</b>				
918+26	924+61	VARIES	666'	2666
924+61	1014+28	24'	8967'	23912
<b>SUGAR GROVE ROAD (CH 1)</b>				
0+15	0+80	VARIES	65'	372
0+80	277+00	22'	27620'	67516
277+00	278+15	VARIES	137	571
<b>BARTLOW SPUR (CH 1 (EXT 1))</b>				
32+49	39+81	VARIES	732'	3578
39+81	64+40	24'	2459'	6557
<b>TOTAL</b>				<b>329456</b>

PAVEMENT SCHEDULE			
STATION TO STATION		BITUMINOUS MATERIALS (TACK COAT)	HOT-MIX ASPHALT SURFACE COURSE, IL- 9.5, MIX "C", N50
		POUND	TON
<b>CAMDEN ROAD (CH 5)</b>			
614+26	614+76	70	22
614+76	617+15	335	83
617+15	617+65	70	22
<b>TOTAL</b>		<b>475</b>	<b>127</b>

HOT-MIX ASPHALT SURFACE REMOVAL, 2"				
STATION TO STATION		WIDTH	LENGTH	SQ YD
614+26	617+65	28'	339'	1055
<b>TOTAL</b>				<b>1055</b>

SHORT TERM PAVEMENT MARKING SCHEDULE				
STATION TO STATION		LENGTH	SHORT TERM PAVEMENT MARKING	SHORT TERM PAVEMENT MARKING REMOVAL
			FOOT	SQ FT
<b>LAPRAIRIE ROAD (CH 5)</b>				
3+02	406+85	40383'	4038	1346
<b>CAMDEN ROAD (CH 5)</b>				
407+09	917+76	51067'	5107	1702
<b>OLD MACOMB ROAD (CH 5)</b>				
918+26	1014+28	9602'	960	320
<b>SUGAR GROVE ROAD (CH 1)</b>				
0+15	278+15	27800'	2780	927
<b>BARTLOW SPUR (CH 1)</b>				
32+49	64+40	3191'	319	106.0
<b>TOTAL</b>			<b>13204</b>	<b>4401</b>

MODEL: I:\MODEL\MJMF5  
 FILE NAME: V:\1745 - Pavement Preservation (Schuyler)\CADD\CADD\_Sheets\1745-SCHED02.dgn

USER NAME = CThomas	DESIGNED -	REVISED -
	DRAWN -	REVISED -
PLOT SCALE = 2,0000' / in.	CHECKED -	REVISED -
PLOT DATE = 1/7/2021	DATE -	REVISED -

**SCHUYLER COUNTY  
CH 1 & CH 5 PAVEMENT PRESERVATION**

**SCHEDULES OF QUANTITIES**

SCALE: NONE    SHEET 2 OF 2 SHEETS    STA.    TO STA.

F.A.S. RTE. 582 583	SECTION 18-00081-00-PP	COUNTY SCHUYLER	TOTAL SHEETS 33	SHEET NO. 6
CONTRACT NO. 93767			ILLINOIS FED. AID PROJECT	



MODEL: 440821.MXD  
FILE NAME: 031715 - Pavement Preservation (Schuyler)CADD\CADD\_Sheets\4745-PP001.dgn

USER NAME = CThomas	DESIGNED -	REVISED -
	DRAWN -	REVISED -
PLOT SCALE = 200,0000' / in.	CHECKED -	REVISED -
PLOT DATE = 1/7/2021	DATE -	REVISED -

**SCHUYLER COUNTY  
CH 1 & CH 5 PAVEMENT PRESERVATION**

<b>PLAN CH 5 (LAPRAIRIE ROAD)</b>		
SCALE: 1"=100'	SHEET 1 OF 19 SHEETS	STA. 3+02.00 TO STA. 56+00.00

F.A.S. RTE.	SECTION	COUNTY	TOTAL SHEETS	SHEET NO.
583	18-00081-00-PP	SCHUYLER	33	7
ILLINOIS FED. AID PROJECT			CONTRACT NO. 93767	

EX CURVE  
 PI STA = 82  
 $\Delta = 40^{\circ}50'13''$   
 $D = 04^{\circ}59'44''$   
 $R = 1,146.92'$   
 $T = 426.96'$   
 $e = 76.89'$   
 $e =$   
 PC STA = 77+79.12  
 PT STA = 85+96.58



MODEL: 440021.MXD  
 FILE NAME: V:\1745 - Pavement Preservation (Schuyler)\CADD\CADD\_Sheets\1745-PP002.dgn

USER NAME = CThomas	DESIGNED -	REVISED -
	DRAWN -	REVISED -
PLOT SCALE = 200,0000' / in.	CHECKED -	REVISED -
PLOT DATE = 1/7/2021	DATE -	REVISED -

**SCHUYLER COUNTY  
 CH 1 & CH 5 PAVEMENT PRESERVATION**

<b>PLAN</b>	
<b>CH 5 (LAPRAIRIE ROAD)</b>	
SCALE: 1"=100'	SHEET 2 OF 19 SHEETS
STA. 56+00.00	TO STA. 111+00.00

F.A.S. RTE.	SECTION	COUNTY	TOTAL SHEETS	SHEET NO.
583	18-00081-00-PP	SCHUYLER	33	8
CONTRACT NO. 93767			ILLINOIS FED. AID PROJECT	





EX CURVE  
 PI STA = 122+17.24  
 $\Delta = 40^{\circ}53'49''$  (RT)  
 $D = 05^{\circ}00'00''$   
 $R = 1,145.92'$   
 $T = 427.27'$   
 $E = 77.06'$   
 $e =$   
 PC STA = 117+89.97  
 PT STA = 126+07.92



MODEL: 44081.MXD  
 FILE NAME: V:\1745 - Pavement Preservation (Schuyler)\CADD\CADD\_Sheets\1745-PP003.dgn

USER NAME = CThomas	DESIGNED -	REVISED -
	DRAWN -	REVISED -
PLOT SCALE = 200,0000' / in.	CHECKED -	REVISED -
PLOT DATE = 1/7/2021	DATE -	REVISED -

**SCHUYLER COUNTY**  
**CH 1 & CH 5 PAVEMENT PRESERVATION**

<b>PLAN</b>			
<b>CH 5 (LAPRAIRIE ROAD)</b>			
SCALE: 1"=100'	SHEET 3	OF 19 SHEETS	STA. 111+00.00 TO STA. 167+00.00

F.A.S. RTE.	SECTION	COUNTY	TOTAL SHEETS	SHEET NO.
583	18-00081-00-PP	SCHUYLER	33	9
CONTRACT NO. 93767			ILLINOIS FED. AID PROJECT	



MODEL: 4408161.MXD  
 FILE NAME: 031745 - Pavement Preservation (Schuyler)CADD\CADD\_Sheets\4745-PP004.dgn

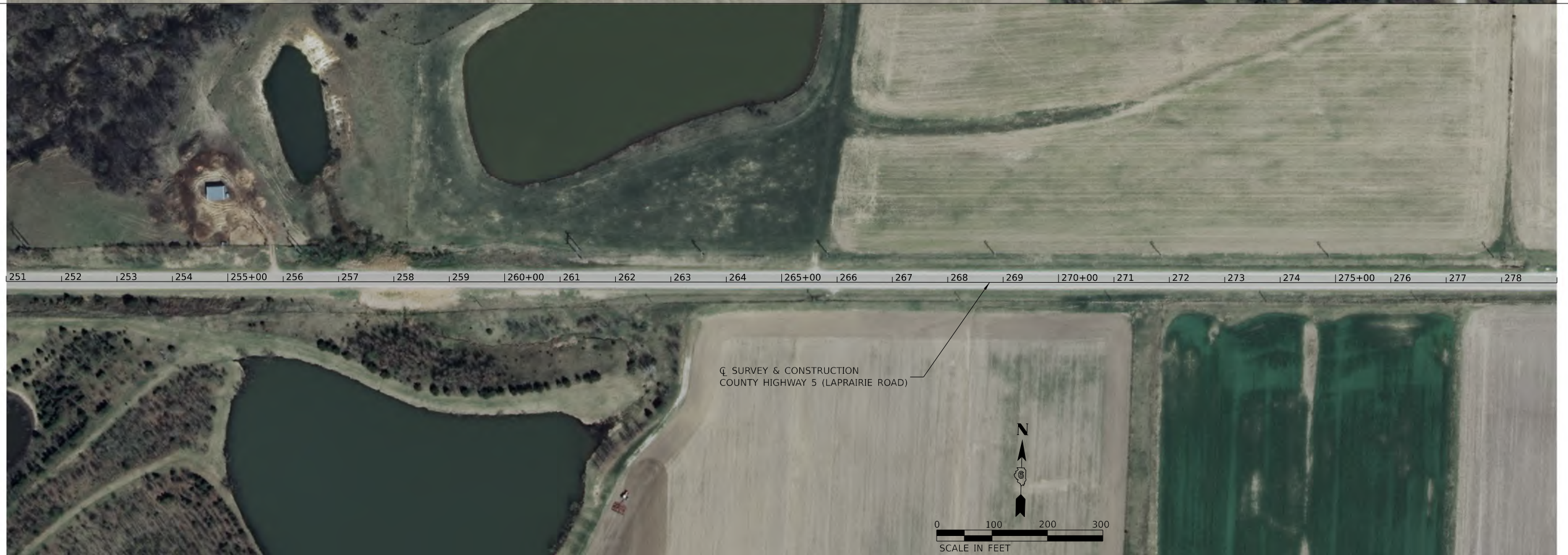
USER NAME = CThomas	DESIGNED -	REVISED -
	DRAWN -	REVISED -
PLOT SCALE = 200,0000' / in.	CHECKED -	REVISED -
PLOT DATE = 1/7/2021	DATE -	REVISED -

**SCHUYLER COUNTY**  
**CH 1 & CH 5 PAVEMENT PRESERVATION**

**PLAN**  
**CH 5 (LAPRAIRIE ROAD)**

SCALE: 1"=100'    SHEET 4 OF 19 SHEETS    STA. 167+00.00 TO STA. 223+00.00

F.A.S. RTE.	SECTION	COUNTY	TOTAL SHEETS	SHEET NO.
583	18-00081-00-PP	SCHUYLER	33	10
CONTRACT NO. 93767				
ILLINOIS FED. AID PROJECT				



MODEL: \\MODEL\NAME  
 FILE NAME: V01745 - Pavement Preservation (Schuyler)\CADD\CADD\_Sheets\4745-PP005.dgn

USER NAME = CThomas	DESIGNED -	REVISED -
	DRAWN -	REVISED -
PLOT SCALE = 200,0000' / in.	CHECKED -	REVISED -
PLOT DATE = 1/7/2021	DATE -	REVISED -

**SCHUYLER COUNTY**  
**CH 1 & CH 5 PAVEMENT PRESERVATION**

<b>PLAN</b>	
<b>CH 5 (LAPRAIRIE ROAD)</b>	
SCALE: 1"=100'	SHEET 5 OF 19 SHEETS
STA. 223+00.00	TO STA. 279+00.00

F.A.S. RTE.	SECTION	COUNTY	TOTAL SHEETS	SHEET NO.
583	18-00081-00-PP	SCHUYLER	33	11
CONTRACT NO. 93767			ILLINOIS FED. AID PROJECT	



MODEL: 440061.MXD  
 FILE NAME: V:\1745 - Pavement Preservation (Schuyler)\CADD\CADD\_Sheets\4745-PP06.dgn

USER NAME = CThomas	DESIGNED -	REVISED -
	DRAWN -	REVISED -
PLOT SCALE = 200,0000' / in.	CHECKED -	REVISED -
PLOT DATE = 1/7/2021	DATE -	REVISED -

**SCHUYLER COUNTY**  
**CH 1 & CH 5 PAVEMENT PRESERVATION**

**PLAN**  
**CH 5 (LAPRAIRIE ROAD)**

SCALE: 1"=100'    SHEET 6 OF 19 SHEETS    STA. 279+00.00 TO STA. 334+00.00

F.A.S. RTE.	SECTION	COUNTY	TOTAL SHEETS	SHEET NO.
583	18-00081-00-PP	SCHUYLER	33	12
CONTRACT NO. 93767				
ILLINOIS FED. AID PROJECT				



MODEL: \\MODEL\NAME  
 FILE NAME: V:\1745 - Pavement Preservation (Schuyler)\CADD\CADD\_Sheets\1745-PP007.dgn

USER NAME = CThomas	DESIGNED -	REVISED -
	DRAWN -	REVISED -
PLOT SCALE = 200,0000' / in.	CHECKED -	REVISED -
PLOT DATE = 1/7/2021	DATE -	REVISED -

**SCHUYLER COUNTY  
 CH 1 & CH 5 PAVEMENT PRESERVATION**

**PLAN  
 CH 5 (LAPRAIRIE ROAD)**

SCALE: 1"=100' SHEET 7 OF 19 SHEETS STA. 334+00.00 TO STA. 390+00.00

F.A.S. RTE.	SECTION	COUNTY	TOTAL SHEETS	SHEET NO.
583	18-00081-00-PP	SCHUYLER	33	13
CONTRACT NO. 93767			ILLINOIS FED. AID PROJECT	



MODEL: \\MODEL\NAME  
 FILE NAME: 031715 - Pavement Preservation (Schuyler)\CADD\CADD\_Sheets\1715-PP08.dgn

USER NAME = CThomas	DESIGNED -	REVISED -
	DRAWN -	REVISED -
PLOT SCALE = 200,0000' / in.	CHECKED -	REVISED -
PLOT DATE = 1/7/2021	DATE -	REVISED -

**SCHUYLER COUNTY**  
**CH 1 & CH 5 PAVEMENT PRESERVATION**

<b>PLAN</b>			
<b>CH 5 (LAPRAIRIE ROAD / CAMDEN ROAD)</b>			
SCALE: 1"=100'	SHEET 8	OF 19 SHEETS	STA. 390+00.00 TO STA. 446+00.00

F.A.S. RTE.	SECTION	COUNTY	TOTAL SHEETS	SHEET NO.
583	18-00081-00-PP	SCHUYLER	33	14
CONTRACT NO. 93767				
ILLINOIS FED. AID PROJECT				



MODEL: \\MODEL\NAME  
 FILE NAME: V:\1745 - Pavement Preservation (Schuyler)\CADD\CADD\_Sheets\1745-PP09.dgn

USER NAME	= CThomas	DESIGNED	-	REVISED	-
DRAWN	-	CHECKED	-	REVISED	-
PLOT SCALE	= 200,0000' / in.	DATE	-	REVISED	-
PLOT DATE	= 1/7/2021				

**SCHUYLER COUNTY**  
**CH 1 & CH 5 PAVEMENT PRESERVATION**

**PLAN**  
**CH 5 (CAMDEN ROAD)**

SCALE: 1"=100'    SHEET 9 OF 19 SHEETS    STA. 446+00.00 TO STA. 501+00.00

F.A.S. RTE.	SECTION	COUNTY	TOTAL SHEETS	SHEET NO.
583	18-00081-00-PP	SCHUYLER	33	15
CONTRACT NO. 93767			ILLINOIS FED. AID PROJECT	



MODEL: 44002ELNAMES  
FILE NAME: 031721 - Pavement Preservation (Schuyler)CADD\_Sheets\4745-PP010.dgn

USER NAME = CThomas	DESIGNED -	REVISED -
	DRAWN -	REVISED -
PLOT SCALE = 200,0000' / in.	CHECKED -	REVISED -
PLOT DATE = 1/7/2021	DATE -	REVISED -

**SCHUYLER COUNTY  
CH 1 & CH 5 PAVEMENT PRESERVATION**

**PLAN  
CH 5 (CAMDEN ROAD)**

SCALE: 1"=100' SHEET 10 OF 19 SHEETS STA. 501+00.00 TO STA. 557+00.00

F.A.S. RTE.	SECTION	COUNTY	TOTAL SHEETS	SHEET NO.
583	18-00081-00-PP	SCHUYLER	33	16
CONTRACT NO. 93767				
ILLINOIS		FED. AID PROJECT		





MODEL: 440821.MXD  
 FILE NAME: 031725 - Pavement Preservation (Schuyler)CADD\_Sheets\4745-PP011.dgn

USER NAME = CThomas	DESIGNED -	REVISED -
DRAWN -	REVISED -	
PLOT SCALE = 200,000' / in.	CHECKED -	REVISED -
PLOT DATE = 1/7/2021	DATE -	REVISED -

**SCHUYLER COUNTY  
 CH 1 & CH 5 PAVEMENT PRESERVATION**

<b>PLAN    CH 5 (CAMDEN ROAD)</b>			
SCALE: 1"=100'	SHEET 11	OF 19 SHEETS	STA. 557+00.00 TO STA. 613+00.00

F.A.S. RTE.	SECTION	COUNTY	TOTAL SHEETS	SHEET NO.
583	18-00081-00-PP	SCHUYLER	33	17
CONTRACT NO. 93767			ILLINOIS FED. AID PROJECT	



MODEL: 440081.MXD  
 FILE NAME: V:\1745 - Pavement Preservation (Schuyler)\CADD\CADD\_Sheets\1745-PP012.dgn

USER NAME = CThomas	DESIGNED -	REVISED -
	DRAWN -	REVISED -
PLOT SCALE = 200,0000' / in.	CHECKED -	REVISED -
PLOT DATE = 1/7/2021	DATE -	REVISED -

**SCHUYLER COUNTY  
 CH 1 & CH 5 PAVEMENT PRESERVATION**

<b>PLAN    CH 5 (CAMDEN ROAD)</b>			
SCALE: 1"=100'	SHEET 12	OF 19 SHEETS	TO STA. 669+00.00

F.A.S. RTE.	SECTION	COUNTY	TOTAL SHEETS	SHEET NO.
583	18-00081-00-PP	SCHUYLER	33	18
CONTRACT NO. 93767			ILLINOIS FED. AID PROJECT	



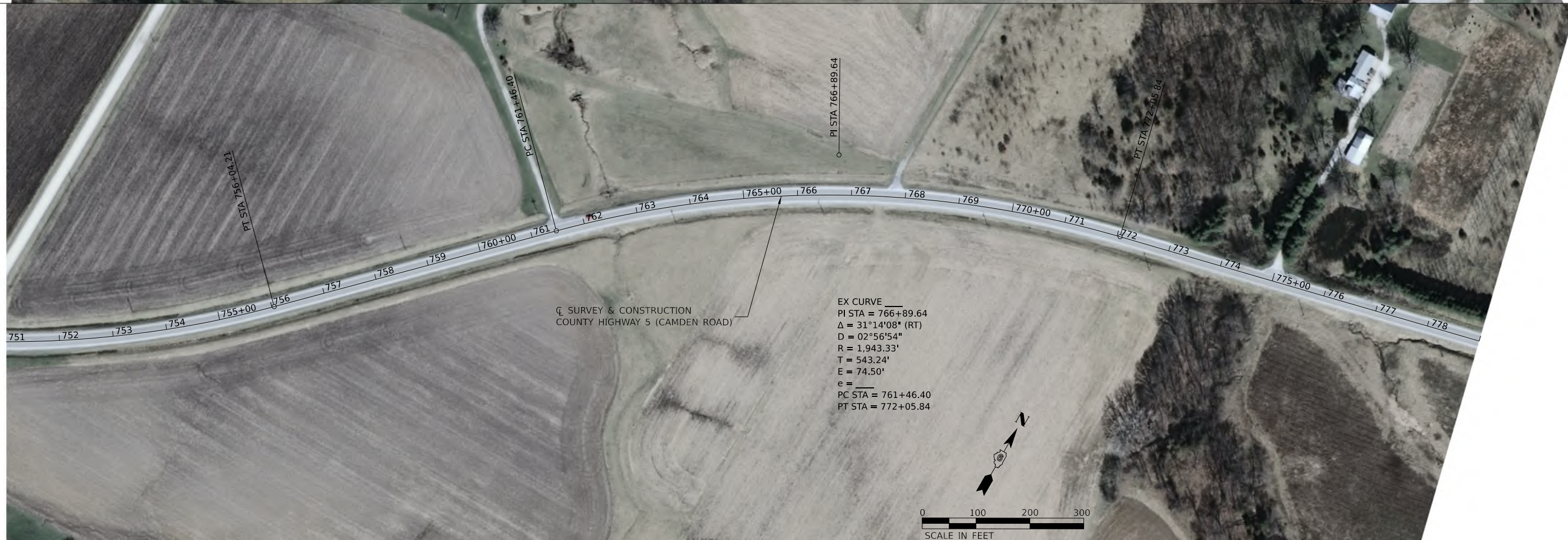
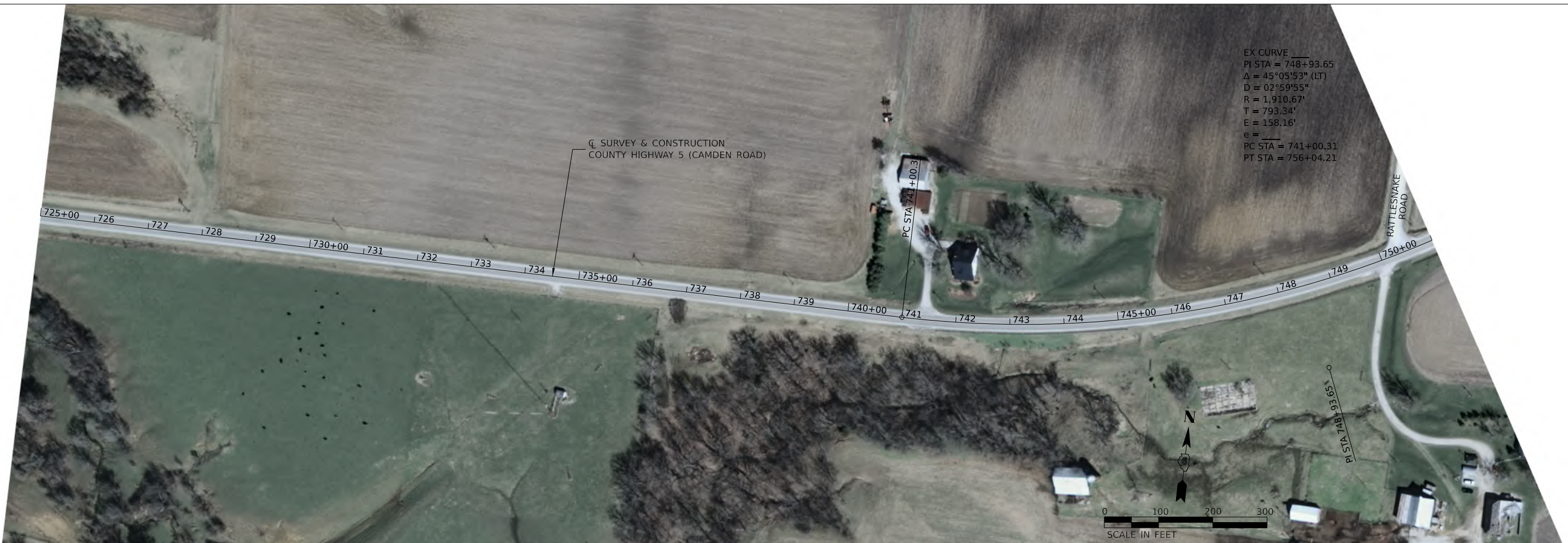
MODEL: \\MODEL\NAME  
 FILE NAME: V:\1745 - Pavement Preservation (Schuyler)\CADD\CADD\_Sheets\1745-PP013.dgn

USER NAME = CThomas	DESIGNED -	REVISED -
	DRAWN -	REVISED -
PLOT SCALE = 200,0000' / in.	CHECKED -	REVISED -
PLOT DATE = 1/7/2021	DATE -	REVISED -

**SCHUYLER COUNTY**  
**CH 1 & CH 5 PAVEMENT PRESERVATION**

<b>PLAN</b>			
<b>CH 5 (CAMDEN ROAD)</b>			
SCALE: 1"=100'	SHEET 13	OF 19 SHEETS	STA. 669+00.00 TO STA. 725+00.00

F.A.S. RTE.	SECTION	COUNTY	TOTAL SHEETS	SHEET NO.
583	18-00081-00-PP	SCHUYLER	33	19
CONTRACT NO. 93767			ILLINOIS FED. AID PROJECT	



MODEL: 440001.MXD  
 FILE NAME: 031715 - Pavement Preservation (Schuyler)CADD\CADD\_Sheets\4745-PP014.dgn

USER NAME = CThomas	DESIGNED -	REVISED -
	DRAWN -	REVISED -
PLOT SCALE = 200,0000' / in.	CHECKED -	REVISED -
PLOT DATE = 1/7/2021	DATE -	REVISED -

**SCHUYLER COUNTY**  
**CH 1 & CH 5 PAVEMENT PRESERVATION**

<b>PLAN</b>			
<b>CH 5 (CAMDEN ROAD)</b>			
SCALE: 1"=100'	SHEET 14	OF 19 SHEETS	STA. 725+00.00 TO STA. 779+00.00

F.A.S. RTE.	SECTION	COUNTY	TOTAL SHEETS	SHEET NO.
583	18-00081-00-PP	SCHUYLER	33	20
CONTRACT NO. 93767			ILLINOIS FED. AID PROJECT	



MODEL: 44081.MXD  
 FILE NAME: 031721 - Pavement Preservation (Schuyler)CADD\CADD\_Sheets\4745-PP015.dgn

USER NAME = CThomas	DESIGNED -	REVISED -
	DRAWN -	REVISED -
PLOT SCALE = 200,0000' / in.	CHECKED -	REVISED -
PLOT DATE = 1/7/2021	DATE -	REVISED -

**SCHUYLER COUNTY  
 CH 1 & CH 5 PAVEMENT PRESERVATION**

<b>PLAN    CH 5 (CAMDEN ROAD)</b>	
SCALE: 1"=100'	SHEET 15 OF 19 SHEETS
STA. 779+00.00	TO STA. 835+00.00

F.A.S. RTE.	SECTION	COUNTY	TOTAL SHEETS	SHEET NO.
583	18-00081-00-PP	SCHUYLER	33	21
CONTRACT NO. 93767			ILLINOIS FED. AID PROJECT	



MODEL: 44081.MXD  
 FILE NAME: V:\1745 - Pavement Preservation (Schuyler)\CADD\CADD\_Sheets\1745-PP016.dgn

USER NAME = CThomas	DESIGNED -	REVISED -
	DRAWN -	REVISED -
PLOT SCALE = 200,0000' / in.	CHECKED -	REVISED -
PLOT DATE = 1/7/2021	DATE -	REVISED -

**SCHUYLER COUNTY**  
**CH 1 & CH 5 PAVEMENT PRESERVATION**

<b>PLAN</b>			
<b>CH 5 (CAMDEN ROAD)</b>			
SCALE: 1"=100'	SHEET 16	OF 19 SHEETS	STA. 835+00.00 TO STA. 891+00.00

F.A.S. RTE.	SECTION	COUNTY	TOTAL SHEETS	SHEET NO.
583	18-00081-00-PP	SCHUYLER	33	22
CONTRACT NO. 93767			ILLINOIS FED. AID PROJECT	



MODEL: 440061NAM16  
 FILE NAME: V:\1745 - Pavement Preservation (Schuyler)\CADD\CADD\_Sheets\4745-PP017.dgn

USER NAME = CThomas	DESIGNED -	REVISED -
DRAWN -	REVISOR -	REVISIONS -
PLOT SCALE = 200,0000' / in.	CHECKED -	REVISOR -
PLOT DATE = 1/7/2021	DATE -	REVISIONS -

**SCHUYLER COUNTY**  
**CH 1 & CH 5 PAVEMENT PRESERVATION**

<b>PLAN</b>		
<b>CH 5 (CAMDEN ROAD / OLD MACOMB ROAD)</b>		
SCALE: 1"=100'	SHEET 17 OF 19 SHEETS	STA. 891+00.00 TO STA. 946+00.00

F.A.S. RTE. 583	SECTION 18-00081-00-PP	COUNTY SCHUYLER	TOTAL SHEETS 33	SHEET NO. 23
ILLINOIS FED. AID PROJECT			CONTRACT NO. 93767	



MODEL: 440081.MXD  
 FILE NAME: 031721 - Pavement Preservation (Schuyler)CADD\CADD\_Sheets\4745-PP018.dgn

USER NAME = CThomas	DESIGNED -	REVISED -
	DRAWN -	REVISED -
PLOT SCALE = 200,0000' / in.	CHECKED -	REVISED -
PLOT DATE = 1/7/2021	DATE -	REVISED -

**SCHUYLER COUNTY  
 CH 1 & CH 5 PAVEMENT PRESERVATION**

**PLAN  
 CH 5 (OLD MACOMB ROAD)**

SCALE: 1"=100' SHEET 18 OF 19 SHEETS STA. 946+00.00 TO STA. 1002+00.00

F.A.S. RTE.	SECTION	COUNTY	TOTAL SHEETS	SHEET NO.
583	18-00081-00-PP	SCHUYLER	33	24
CONTRACT NO. 93767				
ILLINOIS FED. AID PROJECT				





MODEL: \\MODEL\NAME  
 FILE NAME: \\1745 - Pavement Preservation (Schuyler)\CADD\CADD\_Sheets\1745-PP019.dgn

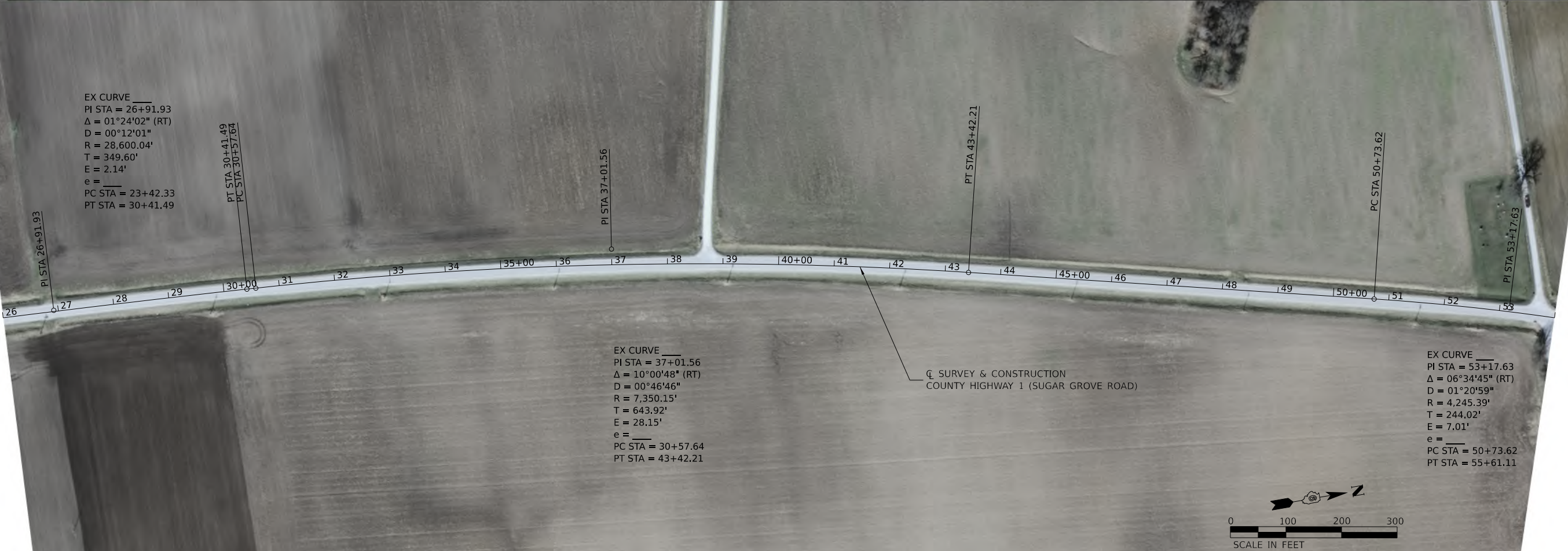
USER NAME = CThomas	DESIGNED -	REVISED -
	DRAWN -	REVISED -
PLOT SCALE = 200,0000' / in.	CHECKED -	REVISED -
PLOT DATE = 1/7/2021	DATE -	REVISED -

**SCHUYLER COUNTY**  
**CH 1 & CH 5 PAVEMENT PRESERVATION**

**PLAN**  
**CH 5 (OLD MACOMB ROAD)**

SCALE: 1"=100'    SHEET 19 OF 19 SHEETS    STA. 1002+00.00 TO STA. 1014+28.00

F.A.S. RTE.	SECTION	COUNTY	TOTAL SHEETS	SHEET NO.
583	18-00081-00-PP	SCHUYLER	33	25
CONTRACT NO. 93767				
ILLINOIS FED. AID PROJECT				



MODEL: 44081.MXD  
 FILE NAME: V:\1745 - Pavement Preservation (Schuyler)\CADD\CADD\_Sheets\1745-PP020.dgn

USER NAME = CThomas	DESIGNED -	REVISED -
	DRAWN -	REVISED -
PLOT SCALE = 200,0000' / in.	CHECKED -	REVISED -
PLOT DATE = 1/7/2021	DATE -	REVISED -

**SCHUYLER COUNTY**  
**CH 1 & CH 5 PAVEMENT PRESERVATION**

**PLAN**  
**CH 1 (SUGAR GROVE ROAD)**  
 SCALE: 1"=100' SHEET 1 OF 6 SHEETS STA. 0+15.00 TO STA. 54+00.00

F.A.S. RTE.	SECTION	COUNTY	TOTAL SHEETS	SHEET NO.
582	18-00081-00-PP	SCHUYLER	33	26
CONTRACT NO. 93767				
ILLINOIS FED. AID PROJECT				



MODEL: 4408161.MXD  
 FILE NAME: 041715 - Pavement Preservation (Schuyler)CADD\_Sheets\4745-PP021.dgn

USER NAME = CThomas	DESIGNED -	REVISED -
	DRAWN -	REVISED -
PLOT SCALE = 200.0000' / in.	CHECKED -	REVISED -
PLOT DATE = 1/7/2021	DATE -	REVISED -

**SCHUYLER COUNTY**  
**CH 1 & CH 5 PAVEMENT PRESERVATION**

<b>PLAN</b>			
<b>CH 1 (SUGAR GROVE ROAD)</b>			
SCALE: 1"=100'	SHEET 2	OF 6 SHEETS	STA. 54+00.00 TO STA. 110+00.00

F.A.S. RTE.	SECTION	COUNTY	TOTAL SHEETS	SHEET NO.
582	18-00081-00-PP	SCHUYLER	33	27
CONTRACT NO. 93767			ILLINOIS FED. AID PROJECT	



MODEL: 440821.MXD  
 FILE NAME: 031721 - Pavement Preservation (Schuyler)CADD\CADD\_Sheets\4745-PP022.dgn

USER NAME = CThomas	DESIGNED -	REVISED -
	DRAWN -	REVISED -
PLOT SCALE = 200,0000' / in.	CHECKED -	REVISED -
PLOT DATE = 1/7/2021	DATE -	REVISED -

**SCHUYLER COUNTY  
 CH 1 & CH 5 PAVEMENT PRESERVATION**

**PLAN  
 CH 1 (SUGAR GROVE ROAD)**

SCALE: 1"=100' SHEET 3 OF 6 SHEETS STA. 110+00.00 TO STA. 166+00.00

F.A.S. RTE.	SECTION	COUNTY	TOTAL SHEETS	SHEET NO.
582	18-00081-00-PP	SCHUYLER	33	28
CONTRACT NO. 93767			ILLINOIS FED. AID PROJECT	



MODEL: 4408261.MXD  
 FILE NAME: V:\1745 - Pavement Preservation (Schuyler)\CADD\CADD\_Sheets\4745-PP023.dgn

USER NAME = CThomas	DESIGNED -	REVISED -
DRAWN -	REVISED -	
PLOT SCALE = 200,0000' / in.	CHECKED -	REVISED -
PLOT DATE = 1/7/2021	DATE -	REVISED -

**SCHUYLER COUNTY  
CH 1 & CH 5 PAVEMENT PRESERVATION**

<b>PLAN</b>			
<b>CH 1 (SUGAR GROVE ROAD)</b>			
SCALE: 1"=100'	SHEET 4	OF 6 SHEETS	STA. 166+00.00 TO STA. 223+00.00

F.A.S. RTE.	SECTION	COUNTY	TOTAL SHEETS	SHEET NO.
582	18-00081-00-PP	SCHUYLER	33	29
CONTRACT NO. 93767				
ILLINOIS FED. AID PROJECT				



MODEL: 4408261.MXD  
 FILE NAME: V:\1745 - Pavement Preservation (Schuyler)\CADD\CADD\_Sheets\1745-PP024.dgn

USER NAME = CThomas	DESIGNED -	REVISED -
DRAWN -	REVISED -	
PLOT SCALE = 200,000' / in.	CHECKED -	REVISED -
PLOT DATE = 1/7/2021	DATE -	REVISED -

**SCHUYLER COUNTY  
 CH 1 & CH 5 PAVEMENT PRESERVATION**

<b>PLAN</b>			
<b>CH 1 (SUGAR GROVE ROAD)</b>			
SCALE: 1"=100'	SHEET 5	OF 6 SHEETS	STA. 223+00.00 TO STA. 278+15.00

F.A.S. RTE. 582	SECTION 18-00081-00-PP	COUNTY SCHUYLER	TOTAL SHEETS 33	SHEET NO. 30
ILLINOIS			FED. AID PROJECT	



MODEL: \\MODEL\NAME  
FILE NAME: V:\1745 - Pavement Preservation (Schuyler)\CADD\CADD\_Sheets\1745-PP025.dgn

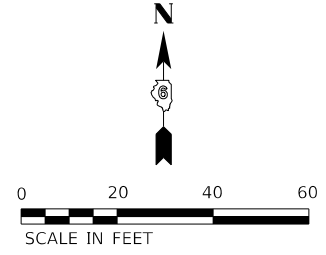
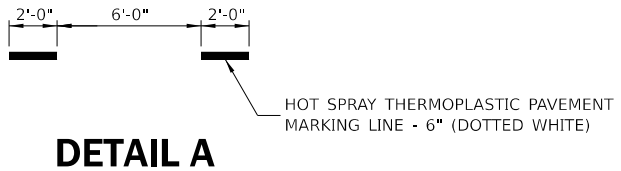
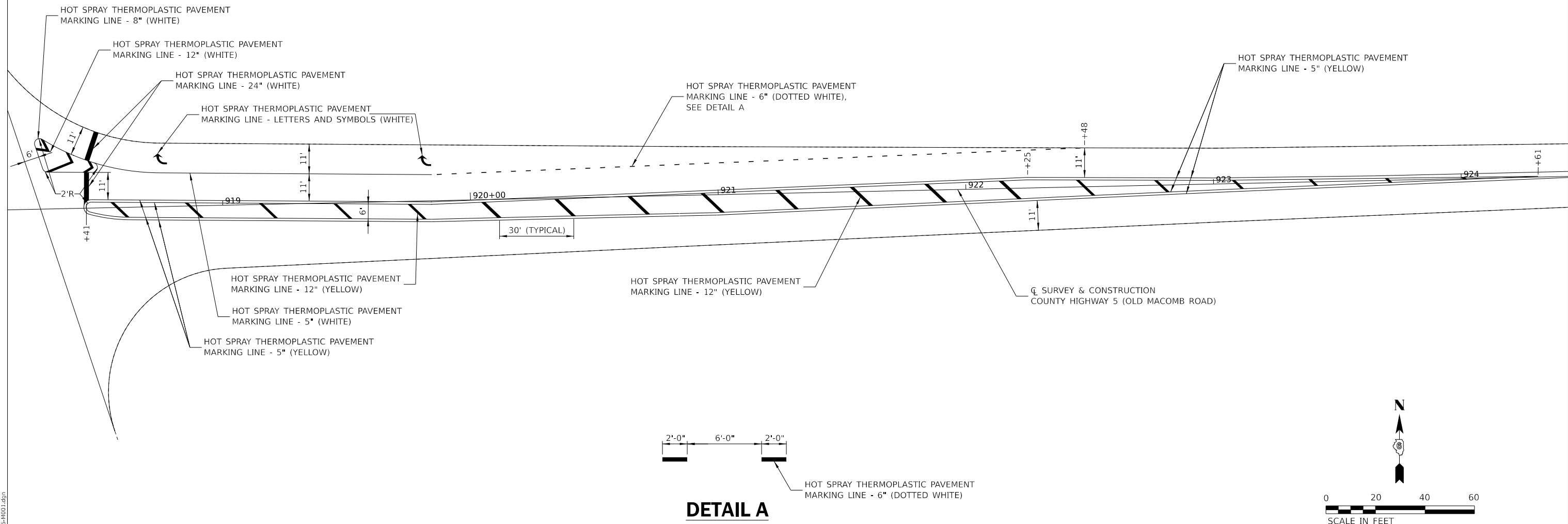
USER NAME = CThomas	DESIGNED -	REVISED -
DRAWN -	REVISED -	
PLOT SCALE = 200.0000' / in.	CHECKED -	REVISED -
PLOT DATE = 1/7/2021	DATE -	REVISED -

**SCHUYLER COUNTY  
CH 1 & CH 5 PAVEMENT PRESERVATION**

<b>PLAN</b>			
<b>CH 1 (EXT) (BARTLOW SPUR)</b>			
SCALE: 1"=100'	SHEET 6	OF 6 SHEETS	STA. 32+49.00 TO STA. 64+40.00

F.A.S. RTE.	SECTION	COUNTY	TOTAL SHEETS	SHEET NO.
582	18-00081-00-PP	SCHUYLER	33	31
CONTRACT NO. 93767			ILLINOIS FED. AID PROJECT	

MODEL: s:\MODEL\MJMF5  
 FILE NAME: 031721 - Pavement Preservation (Schuyler)\CADD\CADD\_Sheets\4745-0001.dgn



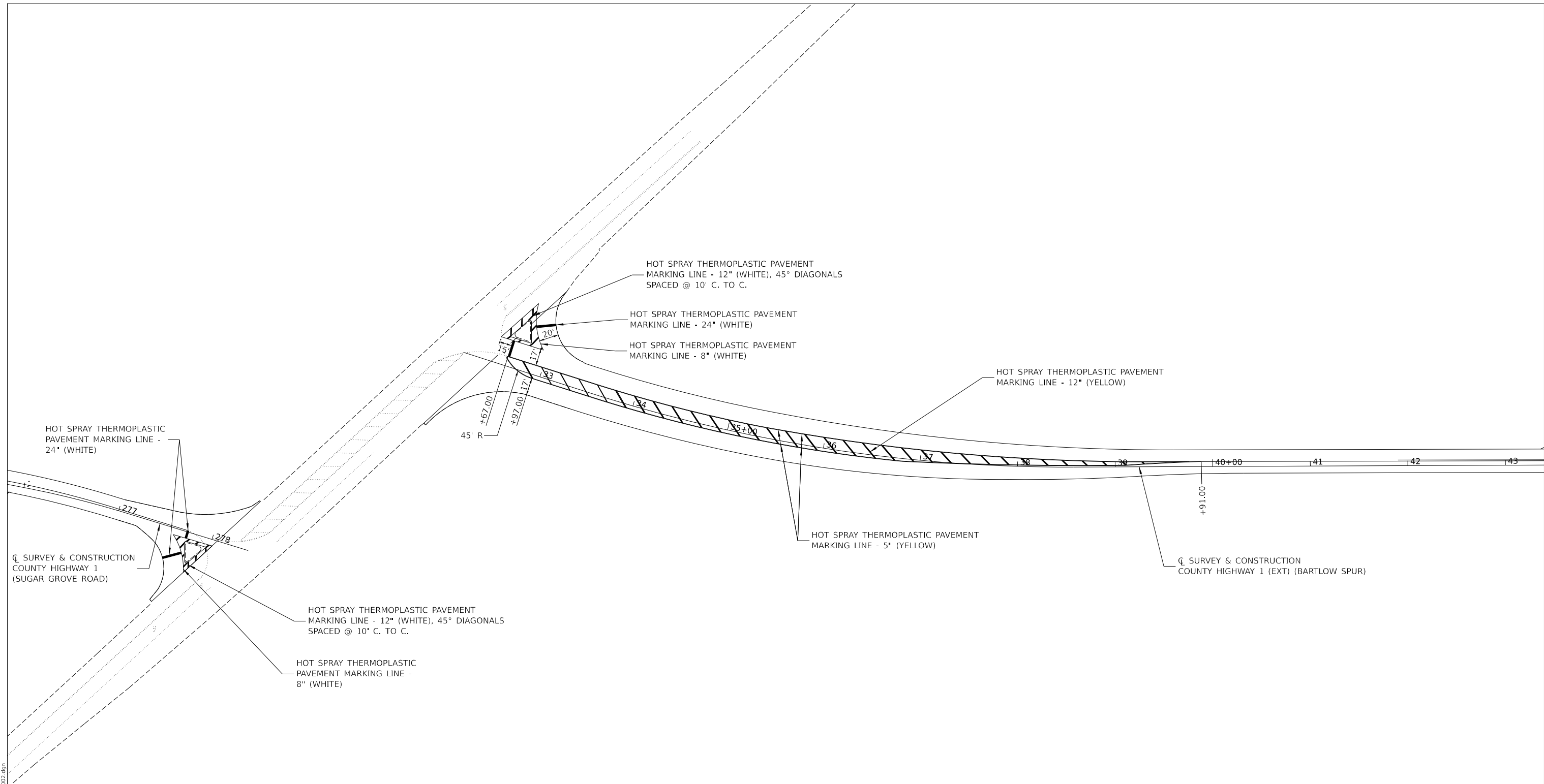
USER NAME = CThomas	DESIGNED -	REVISED -
	DRAWN -	REVISED -
PLOT SCALE = 40.0000 ' / in.	CHECKED -	REVISED -
PLOT DATE = 1/7/2021	DATE -	REVISED -

**SCHUYLER COUNTY  
 CH 1 & CH 5 PAVEMENT PRESERVATION**

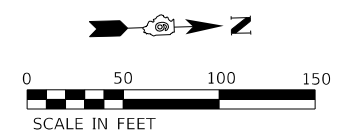
<b>INTERSECTION PAVEMENT MARKING DETAIL</b>			
<b>OLD MACOMB ROAD (CH 5) / US 67</b>			
SCALE: 1"=20'	SHEET 1 OF 1 SHEETS	STA. 918+23.00	TO STA. 924+61.00

F.A.S. RTE.	SECTION	COUNTY	TOTAL SHEETS	SHEET NO.
583	18-00081-00-PP	SCHUYLER	33	32
CONTRACT NO. 93767			ILLINOIS FED. AID PROJECT	





MODEL: \\MODEL\MJMF5  
 FILE NAME: V:\1745 - Pavement Preservation\Schuyler\ICADD\CADD\_Sheets\1745-1002.dgn



USER NAME = CThomas	DESIGNED -	REVISED -
	DRAWN -	REVISED -
PLOT SCALE = 100,000 ' / in.	CHECKED -	REVISED -
PLOT DATE = 1/7/2021	DATE -	REVISED -

**SCHUYLER COUNTY**  
**CH 1 & CH 5 PAVEMENT PRESERVATION**

**INTERSECTION PAVEMENT MARKING DETAIL**  
**SUGAR GROVE ROAD (CH 1) & BARTLOW SPUR (CH 1 EXT)/US 67**

SCALE: 1"=50'    SHEET 1 OF 1 SHEETS    STA. 277+68.00 TO STA. 39+91.00

F.A.S. RTE.	SECTION	COUNTY	TOTAL SHEETS	SHEET NO.
582	18-00081-00-PP	SCHUYLER	33	33
CONTRACT NO. 93767			ILLINOIS FED. AID PROJECT	