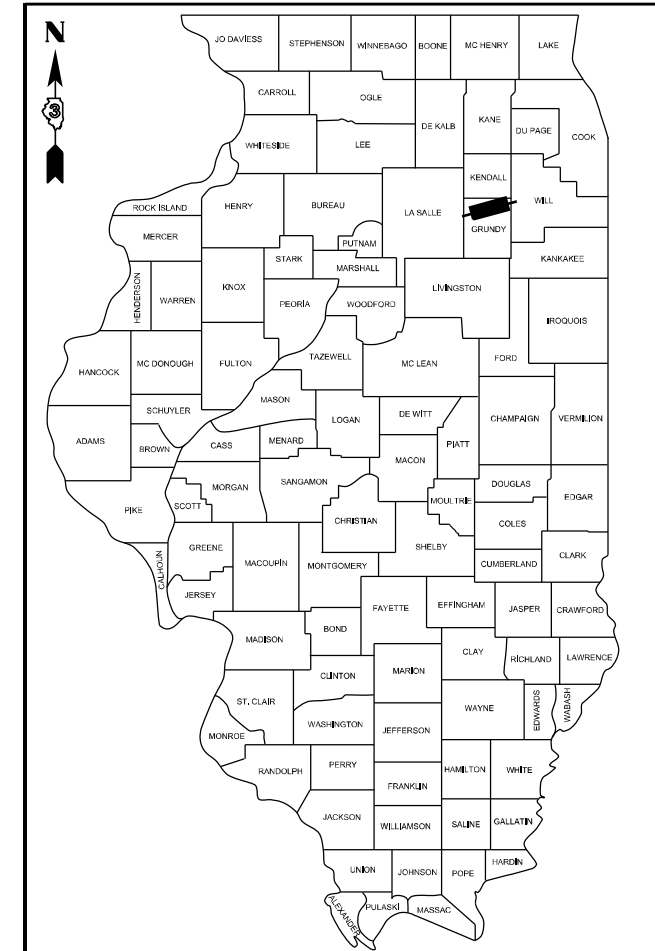


STATE OF ILLINOIS
DEPARTMENT OF TRANSPORTATION

F.A.I. RTE.	SECTION	COUNTY	TOTAL SHEETS	SHEET NO.
80	**	GRUNDY	6	1
		ILLINOIS	CONTRACT NO. 66L52	

** 2021-1 POLLINATOR PRES & REST

D-93-011-21



INDEX

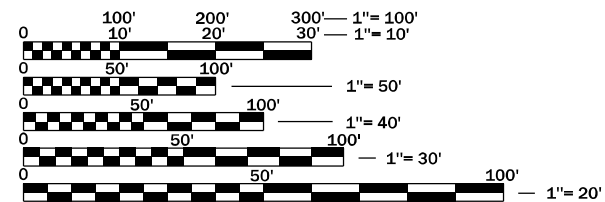
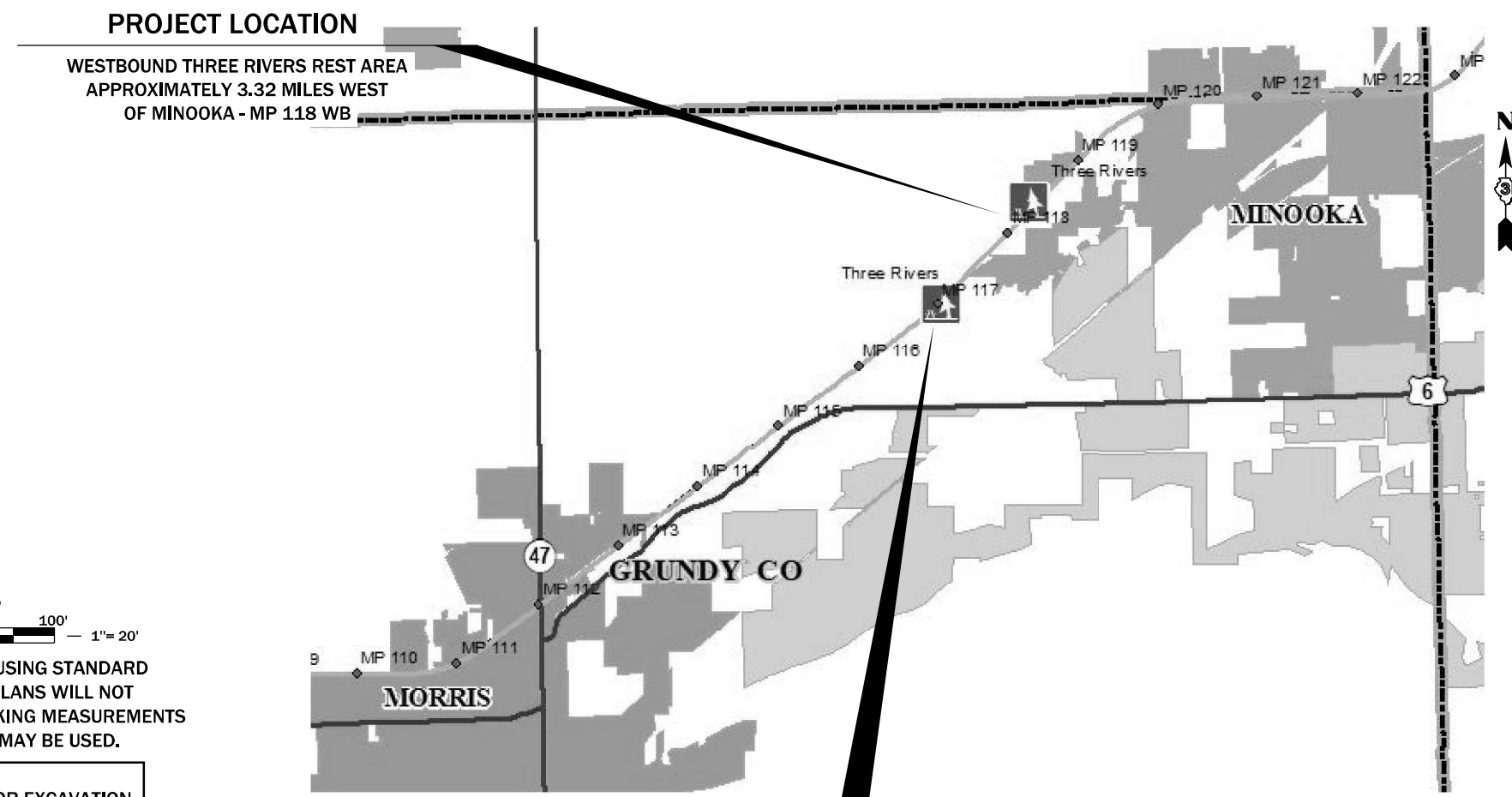
1	COVER SHEET
2-3	GENERAL NOTES
4-6	SUMMARY OF QUANTITIES

LIST OF ILLINOIS DOT HIGHWAY STANDARDS

000001-08	STANDARD SYMBOLS, ABBREVIATIONS AND PATTERNS
001006	DECIMAL OF AN INCH AND OF A FOOT
701001-02	OFF-ROAD OPERATIONS 2L, 2W, MORE THAN 15' (4.5 m) AWAY
701006-05	OFF-ROAD OPERATIONS 2L, 2W, 15' (4.5 m) TO 24" (600 mm) FROM PAVEMENT EDGE
701011-04	OFF-ROAD MOVING OPERATIONS 2L, 2W, DAY ONLY
701101-05	OFF-ROAD OPERATIONS, MULTILANE, 15' (4.5 m) TO 24" (600 mm) FROM PAVEMENT EDGE
701106-02	OFF-ROAD OPERATIONS, MULTILANE, MORE THAN 15' (4.5 m) AWAY
701901-08	TRAFFIC CONTROL DEVICES

**PROPOSED
HIGHWAY PLANS**

F.A.I. ROUTE 80 (I-80)
SECTION 2021-1 POLLINATOR PRES & REST
POLLINATOR HABIT RESTORATION & PRESERVATION
GRUNDY COUNTY
C-93-041-21



FULL SIZE PLANS HAVE BEEN PREPARED USING STANDARD ENGINEERING SCALES. REDUCED SIZED PLANS WILL NOT CONFORM TO STANDARD SCALES. IN MAKING MEASUREMENTS ON REDUCED PLANS, THE ABOVE SCALES MAY BE USED.

J.U.L.I.E.
JOINT UTILITY LOCATION INFORMATION FOR EXCAVATION
1-800-892-0123
OR 811

PROJECT ENGINEER: BRAD DUNCAN, PE
UNIT CHIEF: DARCY CARPENTER
DISTRICT 3 NO. (815) 434-6131
CONTRACT NO. 66L52

PROJECT LOCATION
EASTBOUND THREE RIVERS REST AREA
APPROXIMATELY MP 117 EB

URBAN
INTERSTATE
FAI 80 (I-80)
EB & WB REST AREA
ADT (2015) - 1250
P.V. - 69.4%
S.U. - 4.2%
M.U. - 26.42%

STATE OF ILLINOIS
DEPARTMENT OF TRANSPORTATION

SUBMITTED February 04, 2021
Thomas Howard
REGIONAL ENGINEER

March 19, 2021
Scott A. Etkin
ENGINEER OF DESIGN AND ENVIRONMENT

March 19, 2021
James J. ...
DIRECTOR OF HIGHWAYS PROJECT IMPLEMENTATION

**PRINTED BY THE AUTHORITY
OF THE STATE OF ILLINOIS**

GENERAL NOTES:

1. ANY REFERENCE TO A STANDARD IN THESE PLANS SHALL BE INTERPRETED TO MEAN THE EDITION AS INDICATED BY THE SUBNUMBER SHOWN IN THE LIST OF STANDARDS OR THE COPY INCLUDED IN THESE PLANS.
2. ACTUAL PLANT LOCATIONS MAY VARY FROM THE PLANS AND SHALL BE DETERMINED BY THE ENGINEER. A DETAILED PLANTING PLAN SHOWING INDIVIDUAL LOCATIONS OF TREES, SHRUBS, AND PERENNIALS WILL BE PROVIDED TO THE WINNING BIDDER.
3. CONTRACTOR SHALL VERIFY SITE CONDITIONS AND INFORMATION ON DRAWINGS AND SHALL REPORT PROMPTLY ANY CONCEALED CONDITIONS, MISTAKES, DISCREPANCIES OR DEVIATIONS FROM THE INFORMATION SHOWN IN THE PLANS.
4. SECURE AND PAY FOR PERMITS, FEES AND INSPECTIONS NECESSARY FOR THE PROPER EXECUTION OF THIS WORK.
5. SITE CLEAN-UP SHALL BE PERFORMED ON A DAILY BASIS. SIDEWALKS, PARKING LOTS, ROADWAYS, ETC. SHALL BE KEPT CLEAN AT ALL TIMES.
6. MAINTAIN POSITIVE DRAINAGE ON THE SITE THROUGHOUT THE PROJECT DURATION.
7. EXCESS AND WASTE MATERIALS SHALL BE DISPOSED OF OFF-SITE.
8. ALL OPEN EXCAVATIONS SHALL BE APPROPRIATELY PROTECTED WITH SAFETY FENCE, BARRIERS, OR BARRICADES.
9. SUPPLY AND RE-SET/RE-ESTABLISH TO EXISTING CONDITION AY PROPERTY PINS THAT ARE DAMAGED, COVERED, AND/OR REMOVED THROUGHOUT THE PROJECT DURATION.
10. PERFORM ALL WORK WITHIN THE PROPERTY LINE.
11. VERIFY THE LOCATION AND PROTECT UTILITIES AND STRUCTURES PRIOR TO BEGINNING WORK. CONTRACTOR SHALL CONTACT JULIE AT LEAST 48 HOURS PRIOR TO DIGGING.
12. PLANTS SHALL NOT BE INSTALLED WITHIN TEN FEET (10') OF UTILITY STRUCTURES AND SHALL NOT BE INSTALLED WITHIN FIVE FEET (5') HORIZONTALLY OF UNDERGROUND UTILITIES UNLESS OTHERWISE AUTHORIZED BY THE ENGINEER.
13. THE FOLLOWING RATES OF APPLICATION HAVE BEEN USED IN CALCULATING PLAN QUANTITIES:

SEEDING OF BASIC PRAIRIE SEED MIX FOR DRY-MESIC SOILS (NON-SANDY SOILS)

PRODUCT	APPLICATION RATE	PAY ITEM
SPECIFIED PLS SEED MIX	228.25 OUNCES/ACRE	WILDFLOWER SEEDING (SPECIAL)
REGREEN COVER CROP	20.00 LBS/ACRE	WILDFLOWER SEEDING (SPECIAL)
MYCHORIZZAL INOCULANT	40.00 LBS/ACRE	WILDFLOWER SEEDING (SPECIAL)
RHIZOBIAL INOCULANT	0.36 OUNCES/ACRE	WILDFLOWER SEEDING (SPECIAL)

SEEDING OF BASIC PRAIRIE SEED MIX FOR MESIC-WET SOILS (NON-SANDY SOILS)

PRODUCT	APPLICATION RATE	PAY ITEM
SPECIFIED PLS SEED MIX	207.13 OUNCES/ACRE	WILDFLOWER SEEDING (SPECIAL)
REGREEN COVER CROP	20.00 LBS/ACRE	WILDFLOWER SEEDING (SPECIAL)
MYCHORIZZAL INOCULANT	40.00 LBS/ACRE	WILDFLOWER SEEDING (SPECIAL)
RHIZOBIAL INOCULANT	0.36 OUNCES/ACRE	WILDFLOWER SEEDING (SPECIAL)

SEEDING OF BASIN SAVANNA SEED MIX FOR DRY-MESIC SOILS (NON-SANDY SOILS)

PRODUCT	APPLICATION RATE	PAY ITEM
SPECIFIED PLS SEED MIX	250.50 OUNCES/ACRE	WILDFLOWER INTERSEEDING (SPECIAL)
REGREEN COVER CROP	20.00 LBS/ACRE	WILDFLOWER INTERSEEDING (SPECIAL)
MYCHORIZZAL INOCULANT	40.00 LBS/ACRE	WILDFLOWER INTERSEEDING (SPECIAL)
RHIZOBIAL INOCULANT	0.36 OUNCES/ACRE	WILDFLOWER INTERSEEDING (SPECIAL)

SEEDING OF BASIN SAVANNA SEED MIX FOR MESIC-WET SOILS (NON-SANDY SOILS)

PRODUCT	APPLICATION RATE	PAY ITEM
SPECIFIED PLS SEED MIX	207.75 OUNCES/ACRE	WILDFLOWER INTERSEEDING (SPECIAL)
REGREEN COVER CROP	20.00 LBS/ACRE	WILDFLOWER INTERSEEDING (SPECIAL)
MYCHORIZZAL INOCULANT	40.00 LBS/ACRE	WILDFLOWER INTERSEEDING (SPECIAL)
RHIZOBIAL INOCULANT	0.32 OUNCES/ACRE	WILDFLOWER INTERSEEDING (SPECIAL)

NON-SELECTIVE HERBICIDE MIXTURE - BROADCAST SPRAY APPLICATION #1

PRODUCT	APPLICATION RATE	PAY ITEM
AQUANEAT	96.00 OUNCES/ACRE	WILDFLOWER SEEDING (SPECIAL)
DIQUAT SPC 2 L	32.00 OUNCES/ACRE	WILDFLOWER SEEDING (SPECIAL)
NONIONIC SURFACTANT	16.00 OUNCES/ACRE	WILDFLOWER SEEDING (SPECIAL)
BLUE SPRAY PATTERN INDICATOR	32.00 OUNCES/ACRE	WILDFLOWER SEEDING (SPECIAL)
WATER	30.00 GALLONS/ACRE MINIMUM	WILDFLOWER SEEDING (SPECIAL)

BROADLEAF SELECTIVE HERBICIDE MIXTURE - SPOT SPRAY APPLICATION #1

PRODUCT	APPLICATION RATE	PAY ITEM
MILESTONE	0.35 OUNCES/GALLON OF SOLUTION	WILDFLOWER SEEDING (SPECIAL) + WILDFLOWER INTERSEEDING (SPECIAL)
TRANSLINE	0.50 OUNCES/GALLON OF SOLUTION	WILDFLOWER SEEDING (SPECIAL) + WILDFLOWER INTERSEEDING (SPECIAL)
NONIONIC SURFACTANT	2.00 OUNCES/GALLON OF SOLUTION	WILDFLOWER SEEDING (SPECIAL) + WILDFLOWER INTERSEEDING (SPECIAL)
BLUE SPRAY PATTERN INDICATOR	4.00 OUNCES/GALLON OF SOLUTION	WILDFLOWER SEEDING (SPECIAL) + WILDFLOWER INTERSEEDING (SPECIAL)
WATER	1.00 GALLONS/ACRE MINIMUM	WILDFLOWER SEEDING (SPECIAL) + WILDFLOWER INTERSEEDING (SPECIAL)

NON-SELECTIVE HERBICIDE MIXTURE - BROADCAST SPRAY APPLICATION #2

PRODUCT	APPLICATION RATE	PAY ITEM
AQUANEAT	96.00 OUNCES/ACRE	WILDFLOWER SEEDING (SPECIAL)
NONIONIC SURFACTANT	16.00 OUNCES/ACRE	WILDFLOWER SEEDING (SPECIAL)
BLUE SPRAY PATTERN INDICATOR	32.00 OUNCES/ACRE	WILDFLOWER SEEDING (SPECIAL)
WATER	30.00 GALLONS/ACRE MINIMUM	WILDFLOWER SEEDING (SPECIAL)

GRASS SELECTIVE HERBICIDE MIXTURE - BROADCAST SPRAY APPLICATION #1

PRODUCT	APPLICATION RATE	PAY ITEM
VOLUNTEER	16.00 OUNCES/ACRE	WILDFLOWER INTERSEEDING (SPECIAL)
NONIONIC SURFACTANT	16.00 OUNCES/ACRE	WILDFLOWER INTERSEEDING (SPECIAL)
BLUE SPRAY PATTERN INDICATOR	32.00 OUNCES/ACRE	WILDFLOWER INTERSEEDING (SPECIAL)
WATER	30.00 GALLONS/ACRE MINIMUM	WILDFLOWER INTERSEEDING (SPECIAL)

PRE-EMERGENCE HERBICIDE

PRODUCT	APPLICATION RATE	PAY ITEM
SNAPSHOT	3.45 LBS/1,000 SF	PRE-EMERGENCE HERBICIDE + LANDSCAPE MAINTENANCE

STATE OF ILLINOIS
DEPARTMENT OF TRANSPORTATION
DISTRICT THREE
AS BUILT INFORMATION

STATE OF ILLINOIS
DEPARTMENT OF TRANSPORTATION
DISTRICT THREE

SUPERVISING CONSTRUCTION FIELD ENGINEER

PREPARED BY: _____
DISTRICT STUDIES & PLANS ENGINEER

RESIDENT ENGINEER / TECHNICIAN

DATE: _____

START & END DATES
OF CONSTRUCTION: _____

EXAMINED BY: _____
DISTRICT CONSTRUCTION ENGINEER

INSPECTORS: _____

DISTRICT MATERIALS ENGINEER

DISTRICT OPERATIONS ENGINEER

** 2021-1 POLLINATOR PRES & REST

FILE NAME =	USER NAME = pletschr	DESIGNED -	REVISED -
pw:\planroom\dottillinois.gov\PWIDOT\Documents\DOT Offices\District 3\Projects\I366L52\CADData\I366L52-shl-cover.dwg		DRAWN -	REVISED -
Default	PLOT SCALE = 100,0000 / 1in.	CHECKED -	REVISED -
	PLOT DATE = 2/3/2021	DATE -	REVISED -

**STATE OF ILLINOIS
DEPARTMENT OF TRANSPORTATION**

GENERAL NOTES

SCALE: SHEET OF SHEETS STA. TO STA.

F.A.I. RTE.	SECTION	COUNTY	TOTAL SHEETS	SHEET NO.
80	**	GRUNDY	6	2
			CONTRACT NO. 66L52	
		ILLINOIS	FED. AID PROJECT	

EB BASIC PRAIRIE & WET AREAS ADJACENT TO THE INTERSTATE			
PRODUCT	APPLICATION RATE		PAY ITEM
FERTILIZER BLEND (5-1-5)	10.00	LBS/1,000 SF	WILDFLOWER SEEDING (SPECIAL)
SOP (0-0-50)	4.00	LBS/1,000 SF	WILDFLOWER SEEDING (SPECIAL)

EB BASIC PRAIRIE & WET AREAS ADJACENT TO THE INTERSTATE			
PRODUCT	APPLICATION RATE		PAY ITEM
ELEMENTAL SULFUR	4.00	LBS/1,000 SF	LANDSCAPE MAINTENANCE
SOP (0-0-50)	4.00	LBS/1,000 SF	LANDSCAPE MAINTENANCE

EB BASIC PRAIRIE & WET AREAS ADJACENT TO BUILDING			
PRODUCT	APPLICATION RATE		PAY ITEM
GYP SUM	15.00	LBS/1,000 SF	WILDFLOWER SEEDING (SPECIAL)
UREA	3.00	LBS/1,000 SF	WILDFLOWER SEEDING (SPECIAL)
MAP (11-52-0)	4.00	LBS/1,000 SF	WILDFLOWER SEEDING (SPECIAL)
SOP (0-0-50)	4.00	LBS/1,000 SF	WILDFLOWER SEEDING (SPECIAL)

EB BASIC PRAIRIE & WET AREAS ADJACENT TO BUILDING			
PRODUCT	APPLICATION RATE		PAY ITEM
GYP SUM	15.00	LBS/1,000 SF	LANDSCAPE MAINTENANCE
ELEMENTAL SULFUR	4.00	LBS/1,000 SF	LANDSCAPE MAINTENANCE
SOP (0-0-50)	4.00	LBS/1,000 SF	LANDSCAPE MAINTENANCE

WB BASIC PRAIRIE & WET AREAS ADJACENT TO THE INTERSTATE			
PRODUCT	APPLICATION RATE		PAY ITEM
FERTILIZER BLEND (5-1-5)	10.00	LBS/1,000 SF	WILDFLOWER SEEDING (SPECIAL)
SOP (0-0-50)	4.00	LBS/1,000 SF	WILDFLOWER SEEDING (SPECIAL)

WB BASIC PRAIRIE & WET AREAS ADJACENT TO THE INTERSTATE			
PRODUCT	APPLICATION RATE		PAY ITEM
ELEMENTAL SULFUR	4.00	LBS/1,000 SF	LANDSCAPE MAINTENANCE
SOP (0-0-50)	4.00	LBS/1,000 SF	LANDSCAPE MAINTENANCE

WB BASIC PRAIRIE & WET AREAS ADJACENT TO BUILDING			
PRODUCT	APPLICATION RATE		PAY ITEM
UREA	3.00	LBS/1,000 SF	WILDFLOWER SEEDING (SPECIAL)
MAP (11-52-0)	4.00	LBS/1,000 SF	WILDFLOWER SEEDING (SPECIAL)
SOP (0-0-50)	4.00	LBS/1,000 SF	WILDFLOWER SEEDING (SPECIAL)

WB BASIC SAVANNA AREAS			
PRODUCT	APPLICATION RATE		PAY ITEM
HI-CAL LIME	50.00	LBS/1,000 SF	WILDFLOWER INTERSEEDING (SPECIAL)
UREA	3.00	LBS/1,000 SF	WILDFLOWER INTERSEEDING (SPECIAL)
MAP (11-52-0)	4.00	LBS/1,000 SF	WILDFLOWER INTERSEEDING (SPECIAL)
SOP (0-0-50)	4.00	LBS/1,000 SF	WILDFLOWER INTERSEEDING (SPECIAL)

WB BASIC SAVANNA AREAS			
PRODUCT	APPLICATION RATE		PAY ITEM
HI-CAL LIME	15.00	LBS/1,000 SF	LANDSCAPE MAINTENANCE
MAP (11-52-0)	4.00	LBS/1,000 SF	LANDSCAPE MAINTENANCE
SOP (0-0-50)	4.00	LBS/1,000 SF	LANDSCAPE MAINTENANCE

ENGINEERED SOIL			
PRODUCT	APPLICATION RATE		PAY ITEM
TOPSOIL	22.80	CY/1,000 SF	PLANTING BED PREPARATION (SPECIAL)
FM20 SAND	7.60	CY/1,000 SF	PLANTING BED PREPARATION (SPECIAL)
SOUTHERN PINE BARK FINES	7.60	CY/1,000 SF	PLANTING BED PREPARATION (SPECIAL)

** 2021-1 POLLINATOR PRES & REST

FILE NAME =	USER NAME = pletschr	DESIGNED -	REVISED -	STATE OF ILLINOIS DEPARTMENT OF TRANSPORTATION	GENERAL NOTES				F.A.I. RTE.	SECTION	COUNTY	TOTAL SHEETS	SHEET NO.
pw:\planroom.dot\illinois.gov\PWIDOT\Documents\IDOT	Offices\District 3\Projects\I366L52\CADData\I366L52-shl-cover.dwg	DRAWN -	REVISED -						80	**	GRUNDY	6	3
Default	PLOT SCALE = 100,0000' / in.	CHECKED -	REVISED -		CONTRACT NO. 66L52								
	PLOT DATE = 2/3/2021	DATE -	REVISED -		SCALE:	SHEET	OF	SHEETS	STA.	TO STA.	ILLINOIS	FED. AID PROJECT	

CODE NO.	ITEM	UNIT	TOTAL QUANTITY	CONSTR. CODE	
				100% STATE	
				ROADWAY	0031 RURAL
20101700	SUPPLEMENTAL WATERING	UNIT	24	24	
67100100	MOBILIZATION	L SUM	1	1	
B2000766	TREE, AMELANCHIER X GRANDIFLORA AUTUMN BRILLIANCE (AUTUMN BRILLIANCE SERVICE BERRY), 6' HEIGHT, SHRUB FORM, BALLED AND BURLAPPED	EACH	3	3	
C2000436	SHRUB, ARONIA ARBUTIFOLIA DRILLIANT ISSIMA (BRILLANT RED CHOKEDERRY), 3' HEIGHT, BALLED AND BURLAPPED	EACH	10	10	
C2001622	SHRUB, CORNUS SERICEA "FARROW" (ARCTIC FIRE DOGWOOD), 30" HEIGHT, 5-GALLON CONTAINER	EACH	20	20	
C2002437	SHRUB, DIERVILLA G2X88544 (KODIAK ORANGE BUSH HONEYSUCKLE), CONTAINER GROWN, 3-GALLON	EACH	20	20	
C2003436	SHRUB, HYDRANGEA ARBORESCENS ANNABELLE (ANNABELLE SMOOTH HYDRANGEA), 3' HEIGHT, BALLED AND BURLAPPED	EACH	20	20	
C20038G5	ILEX GLABRA SHAMROCK (SHAMROCK INKBERRY), WELL-DEVELOPED, 5-GALLON	EACH	16	16	
C20058G4	SHRUB, RHUS AROMATICA GRO-LOW, (GRO- LOW SUMAC), CONTAINER GROWN, 3-GALLON	EACH	20	20	
C2009250	SHRUB, ROSA RADTKO (DOUBLE KNOCKOUT ROSE), 18" HEIGHT, CONTAINER GROWN 3-GALLON	EACH	10	10	
C2015091	SHRUB, CLETHRA ALNI RUBY SPICE, 2' HEIGHT, BALLED AND BURLAPPED	EACH	17	17	
C2C008G3	SHRUB, RHUS AROMATICA (FRAGRANT SUMAC), CONTAINER GROWN, 3-GALLON	EACH	6	6	
C2C013G3	SHRUB, CLETHRA ALNIFOLIA (SUMMERSWEET CLETHRA), CONTAINER GROWN, 3-GALLON	EACH	20	20	
C2C019G5	SHRUB, ARONIA MELANOCARPA IROQUOIS BEAUTY (IROQUOIS BEAUTY BLACK CHOKEBERRY), CONTAINER GROWN, 5-GALLON	EACH	20	20	

** 2021-1 POLLINATOR PRES & REST

FILE NAME =	USER NAME = carpenterj	DESIGNED -	REVISED -	STATE OF ILLINOIS DEPARTMENT OF TRANSPORTATION	SUMMARY OF QUANTITIES				F.A.I. RTE.	SECTION	COUNTY	TOTAL SHEETS	SHEET NO.
pw:\planroom.dot\illinois.gov\PWIDOT\Documents\IDOT Offices\District 3\Projects\ID366L52\CADData\ID366L52-shl-cover.dwg		DRAWN -	REVISED -						80	**	GRUNDY	6	4
Default	PLOT SCALE = 100,0000' / in.	CHECKED -	REVISED -		CONTRACT NO. 66L52				ILLINOIS FED. AID PROJECT				
	PLOT DATE = 2/1/2021	DATE -	REVISED -		SCALE:	SHEET	OF	SHEETS	STA.	TO STA.			

CODE NO.	ITEM	UNIT	TOTAL QUANTITY	CONSTR. CODE
				100% STATE ROADWAY 0031 RURAL
C2C03432	SHRUB, HYDRANGEA QUERCIFOLIA (OAKLEAF HYDRANGEA), 2' HEIGHT, CONTAINER	EACH	6	6
C2C04675	SHRUB, PHYSOCARPA OPULIFOLIUS DONNA MAY (LITTLE DEVIL NINEBARK), 2-1/2' HEIGHT, CONTAINER	EACH	10	10
C2C06004	SHRUB, RHUS COPALLINA VAR. LATIFOLIA MORTON (PRAIRIE FLAME SHINING SUMAC), 3' HEIGHT, CONTAINER	EACH	10	10
C2C07005	SHRUB, ROSA RADTKOPINK (PINK DOUBLE KNOCKOUT ROSE), 18" HEIGHT, CONTAINER	EACH	10	10
C2C11752	SHRUB, VIBURNUM DENTATUM CHRISTORS BLUE MUFFIN VIBURNUM), 2' HEIGHT, CONTAINER	EACH	10	10
D2C01018	EVERGREEN, JUNIPERUS HORIZONTALIS WILTONII (BLUE RUG JUNIPER), 18" WIDTH, CONTAINER	EACH	10	10
K0012990	PERENNIAL PLANTS, ORNAMENTAL TYPE, GALLON POT	UNIT	1.5	1.5
K0013000	PERENNIAL PLANTS, PRAIRIE TYPE, 2" DIAMETER BY 4" DEEP PLUG	UNIT	4.5	4.5
K0013020	PERENNIAL PLANTS, PRAIRIE TYPE, GALLON POT	UNIT	39	39
K1003460	LANDSCAPE MAINTENANCE	CAL MO	18	18
K1004539	PLANT WATERING	UNIT	1	1
K1006740	WILDFLOWER INTERSEEDING (SPECIAL)	ACRE	4.1	4.1
K1006756	WILDFLOWER SEEDING (SPECIAL)	ACRE	6	6
X0325170	PLANTING BED PREPARATION	SQ FT	11785	11785

** 2021-1 POLLINATOR PRES & REST

FILE NAME =	USER NAME = pletschr	DESIGNED -	REVISED -	STATE OF ILLINOIS DEPARTMENT OF TRANSPORTATION	SUMMARY OF QUANTITIES				F.A.I. RTE.	SECTION	COUNTY	TOTAL SHEETS	SHEET NO.
pw:\planroom\dot\illinois.gov\PWIDOT\Documents\DOT Offices\District 3\Projects\0366L52\CADData\0366L52-shl-cover.dwg	DRAWN -	REVISED -	REVISED -						80	**	GRUNDY	6	5
Default	PLOT SCALE = 100,0000' / in.	CHECKED -	REVISED -		CONTRACT NO. 66L52								
	PLOT DATE = 2/2/2021	DATE -	REVISED -		SCALE:	SHEET OF SHEETS	STA. TO STA.	ILLINOIS FED. AID PROJECT					

CODE NO.	ITEM	UNIT	TOTAL QUANTITY	CONSTR. CODE
				100% STATE ROADWAY 0031 RURAL
X0325788	PRE-EMERGENCE HERBICIDE	SQ YD	1310	1310
X2511630	EROSION CONTROL BLANKET (SPECIAL)	SQ YD	32000	32000

** 2021-1 POLLINATOR PRES & REST

FILE NAME =	USER NAME = carpenterj	DESIGNED -	REVISED -	STATE OF ILLINOIS DEPARTMENT OF TRANSPORTATION	SUMMARY OF QUANTITIES	F.A.I. RTE.	SECTION	COUNTY	TOTAL SHEETS	SHEET NO.	
pw:\planroom.dot\illinois.gov\PWIDOT\Documents\DOT	offices\District 3\Projects\66L52\CADData\66L52-shl-cover	DRAWN -	REVISED -			80	**	GRUNDY	6	6	
Default	PLOT SCALE = 100,0000' / in.	CHECKED -	REVISED -			CONTRACT NO. 66L52					
	PLOT DATE = 2/1/2021	DATE -	REVISED -			SCALE:	SHEET	OF	SHEETS	STA.	TO STA.