

F.A.P. RTE.	SECTION	COUNTY	TOTAL SHEETS	SHEET NO.
71	(11,12)RS-3	DEWITT	80*	1
		ILLINOIS	CONTRACT NO. 70C16	

*80 - 4 = 76 TOTAL SHEETS
P-95-022-20

FOR INDEX OF SHEETS, SEE SHEET NO. 2
FOR SUMMARY OF QUANTITIES, SEE SHEETS NO. 3-6

STATE OF ILLINOIS
DEPARTMENT OF TRANSPORTATION

PROPOSED HIGHWAY PLANS

FAP 71 (ILL 54)
SECTION (11,12)RS-3
PROJECT STP-ZNQ5(399)
3P RESURFACING - STANDARD OVERLAY
DEWITT COUNTY

C-95-038-20

LOGAN CO LINE TO 0.3 MI W OF US 51 AT CLINTON

OMISSIONS FROM PAVING

S.N. 020-0020 (E-E APPROACH PAVEMENTS)
STA. 749+76.71 TO STA 754+08.65

TRAFFIC DATA

	LEG A	LEG B	LEG C
2020 ADT =	950	1,050	2,300
PV% =	86.3%	84.8%	92.7%
SU% =	5.3%	7.6%	3.0%
MU% =	8.4%	7.6%	4.3%

TRAFFIC DATA LOCATIONS

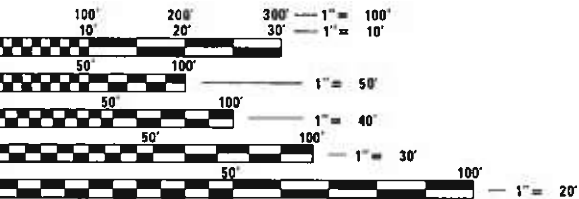
LEG "A" IS IL 54 FROM LOGAN COUNTY LINE TO FAS 546 IN KENNEY
LEG "B" IS IL 54 FROM FAS 546 IN KENNEY TO TR 94
LEG "C" IS IL 54 FROM TR 94 TO US 51



DATE: 1/26/2021
GREGORY A COOK
ILLINOIS LICENSED PROFESSIONAL ENGINEER
NO. 062-053737
EXPIRATION 11/30/2021
1-6, 13-20, 39-54
SHEETS



EXPIRES 11/30/2021
SIGNATURE: [Signature]
DATE: 1/26/2021
7-12, 21-38, 55-84
SHEETS



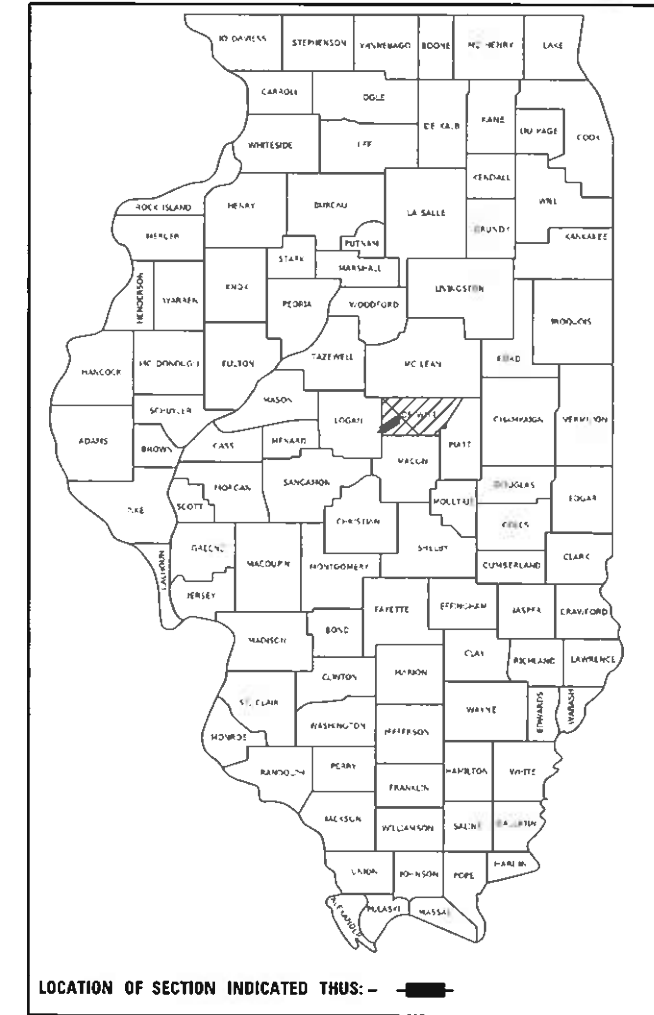
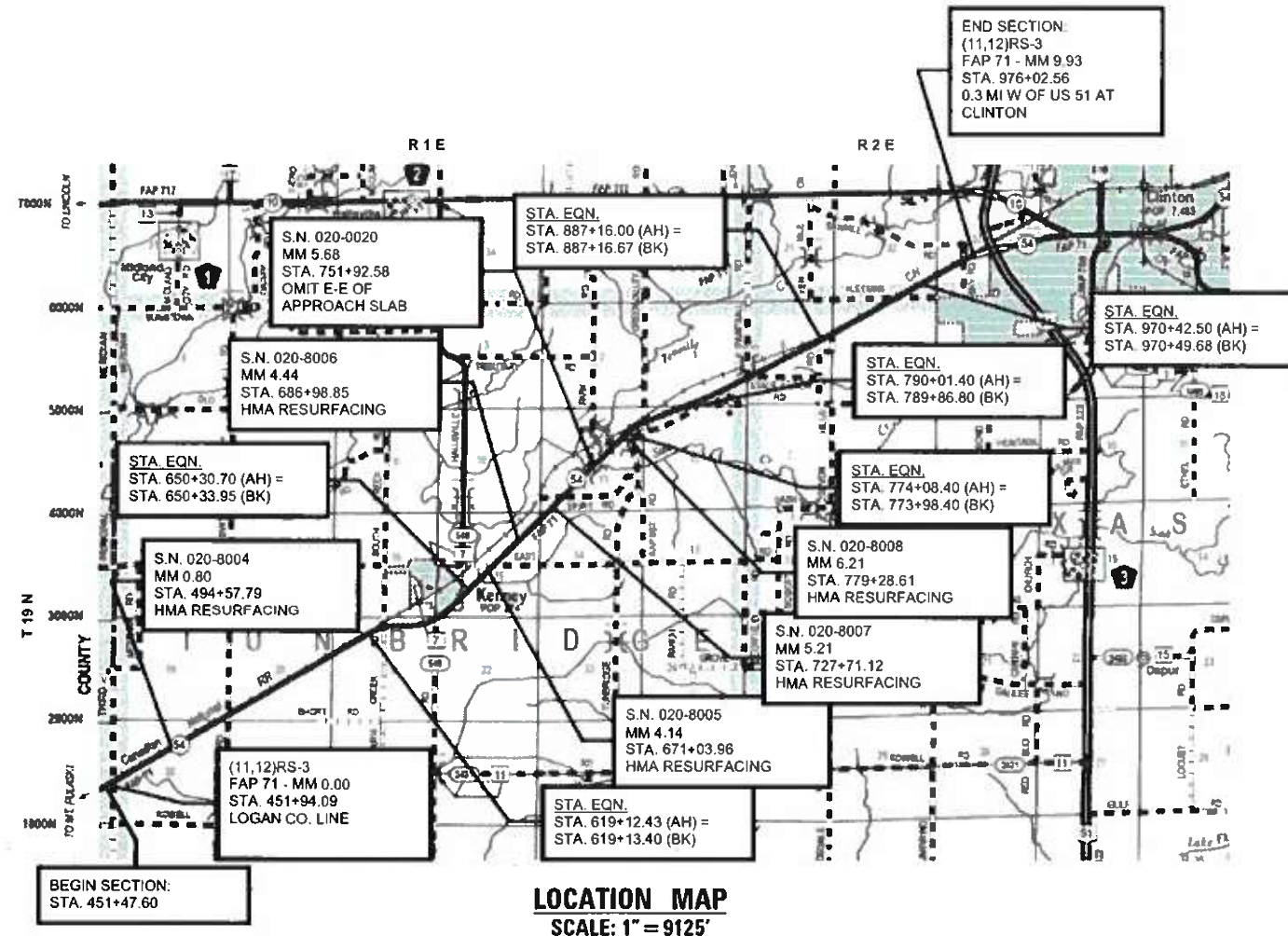
FULL SIZE PLANS HAVE BEEN PREPARED USING STANDARD ENGINEERING SCALES. REDUCED SIZED PLANS WILL NOT CONFORM TO STANDARD SCALES. IN MAKING MEASUREMENTS ON REDUCED PLANS, THE ABOVE SCALES MAY BE USED.

J.U.L.I.E.
JOINT UTILITY LOCATION INFORMATION FOR EXCAVATION
1-800-892-0123
OR 811

TOWNSHIPS: CLINTONIA, TEXAS, TUNBRIDGE

PROJECT ENGINEER: JASON W. STULTS
SQUAD LEADER: RYAN T. CARROLL
DISTRICT 5 NO. (217) 465-4181

CONTRACT NO. 70C16



FUNCTIONAL CLASSIFICATION
MINOR ARTERIAL

STATE OF ILLINOIS
DEPARTMENT OF TRANSPORTATION

SUBMITTED: 1/27/21
Kerila Sametson
REGIONAL ENGINEER

March 19, 2021
[Signature]
ENGINEER OF DESIGN AND ENVIRONMENT

March 19, 2021
[Signature]
DIRECTOR OF HIGHWAYS PROJECT IMPLEMENTATION

PRINTED BY THE AUTHORITY
OF THE STATE OF ILLINOIS

TOTAL GROSS LENGTH OF PROJECT = 52454.96 FT. = 9.93 MILE
TOTAL NET LENGTH OF PROJECT = 52023.02 FT. = 9.85 MILE

INDEX OF SHEETS

DESCRIPTION	SHEET NO.
COVER SHEET	1
INDEX & LIST OF STANDARDS & COMMITMENTS & GENERAL NOTES	2
SUMMARY OF QUANTITIES	3-6
TYPICAL SECTIONS	7-12
SCHEDULE OF QUANTITIES	13-18
TIE POINTS & BENCHMARKS	19-20
PLAN SHEETS	21-38
DISTRICT DETAILS	39-47
WIDTH RESTRICTION SIGN LOCATIONS	48-51
GUARDRAIL DETAILS	52-54
CROSS SECTIONS	55-80



GENERAL NOTES

G.N. - 100A
ELECTRONIC FILES AND/OR ELECTRONIC SURVEY INFORMATION INCLUDING CADD FILES WILL NOT BE AVAILABLE TO THE CONTRACTOR.

G.N. - 105.09A
ALL ELEVATIONS SHOWN IN THE PLANS ARE BASED ON NORTH AMERICAN VERTICAL DATUM OF 1988. (NAVD 88)

G.N. - 406H
MIXTURE REQUIREMENTS

THE FOLLOWING MIXTURE REQUIREMENTS ARE APPLICABLE FOR THIS PROJECT:

LOCATION	IL 54	IL 54	IL 54	IL 54
MIXTURE USE	SURFACE & TOP LIFT OF SHOULDER	BINDER FINE GRADED	CLASS D PATCHES	INCIDENTAL
AC/PG	PG 64-22	PG 64-22	PG 64-22	PG 64-22
DESIGN AIR VOIDS	4.0% @ Ndes=50	4.0% @ Ndes=50	4.0% @ Ndes=50	4.0% @ Ndes=50
MIX COMP (GRADATION)	IL 9.5	IL 9.5 FG	IL 19.0	IL 9.5
FRICTION AGGREGATE	Mix C	N.A.	N.A.	Mix C
MIXTURE WEIGHT	112	112	112	112
QUALITY MANAGEMENT PROGRAM	QCP	QCP	QC/QA	QC/QA
SUBLOT SIZE	1000	1000	N.A.	N.A.

G.N. - 703A
SHORT TERM PAVEMENT MARKING SHALL BE APPLIED TO THE PAVEMENT AFTER ANY OF THE FOLLOWING: COLD MILLING AND/OR PLACING BITUMINOUS MATERIALS (TACK COAT), LEVELING BINDER (MACHINE METHOD), BINDER AND SURFACE COURSES. SHORT TERM PAVEMENT MARKING PLACED ON THE SURFACE SHALL COINCIDE WITH THE FINAL PAVEMENT STRIPING. SHORT TERM PAVEMENT MARKING PLACED PRIOR TO THE SURFACE SHALL COINCIDE WITH THE EXISTING PAVEMENT MARKINGS. USE 4 FEET PER 40 FEET (OR 10% PER STATION).

G.N. - 781
THE FINAL PAVEMENT MARKINGS SHALL BE IN PLACE PRIOR TO PLACING THE RAISED REFLECTIVE PAVEMENT MARKERS.

LIST OF STANDARDS

STANDARD NO.	DESCRIPTION
000001-08	STANDARD SYMBOLS, ABBREVIATIONS AND PATTERNS
001001-02	AREAS OF REINFORCEMENT BARS
001006	DECIMAL OF AN INCH AND OF A FOOT
280001-07	TEMPORARY EROSION CONTROL SYSTEMS
442201-03	CLASS C AND D PATCHES
482011-03	HMA SHOULDER STRIPS/SHOULDERS WITH RESURFACING OR WIDENING AND RESURFACING PROJECTS
630001-12	STEEL PLATE BEAM GUARDRAIL
630111-01	WEAK POST GUARDRAIL ATTACHED TO CULVERT
630301-09	SHOULDER WIDENING FOR TYPE 1 (SPECIAL) GUARDRAIL TERMINALS
631006-08	TRAFFIC BARRIER TERMINAL, TYPE 1B
631031-17	TRAFFIC BARRIER TERMINAL, TYPE 6
635001-02	DELINEATORS
701001-02	OFF-RD OPERATIONS, 2L, 2W, MORE THAN 15' (4.5M) AWAY
701006-05	OFF-RD OPERATIONS, 2L, 2W, 15' (4.5M) TO 24" (600mm) FROM PAVEMENT EDGE
701011-04	OFF-RD MOVING OPERATIONS, 2L, 2W, DAY ONLY
701201-05	LANE CLOSURE, 2L, 2W, DAY ONLY, FOR SPEEDS ≥ 45 MPH
701301-04	LANE CLOSURE, 2L, 2W, SHORT TIME OPERATIONS
701306-04	LANE CLOSURE, 2L, 2W, SLOW MOVING OPERATIONS DAY ONLY, FOR SPEEDS ≥ 45 MPH
701311-03	LANE CLOSURE, 2L, 2W, MOVING OPERATIONS DAY ONLY
701336-07	LANE CLOSURE, 2L, 2W, WORK AREAS IN SERIES, FOR SPEEDS ≥ 45 MPH
701901-08	TRAFFIC CONTROL DEVICES
720011-01	METAL POSTS FOR SIGN, MARKERS & DELINEATORS
725001-01	OBJECT AND TERMINAL MARKERS
780001-05	TYPICAL PAVEMENT MARKINGS
781001-04	TYPICAL APPLICATIONS RAISED REFLECTIVE PAVEMENT MARKERS
782006-01	GUARDRAIL AND BARRIER WALL REFLECTOR MOUNTING DETAILS

STRUCTURE INFORMATION

BASED ON STRUCTURAL ANALYSIS, AN EMPTY MTD WITH THE FOLLOWING MAXIMUM GROSS WEIGHT RESTRICTION OF 40 TONS IS ALLOWED OVER ALL STRUCTURES WITHIN THESE CONTRACT LIMITS.

COMMITMENTS:

THERE ARE NO COMMITMENTS FOR THIS CONTRACT

MODEL: D:\efw\11\2021\180180168\07 - HEGADJOT.DS_187-2007.W07_IL54\04_Drawing\EGADJOT_Sheets\DS70C16\sheet-index.dgn



USER NAME = toconnor
PLOT SCALE = 100.0000' / in.
PLOT DATE = 1/27/2021

DESIGNED - AAS	REVISED -
DRAWN - DC, DRR	REVISED -
CHECKED - GAC	REVISED -
DATE - 1/8/2021	REVISED -

**STATE OF ILLINOIS
DEPARTMENT OF TRANSPORTATION**

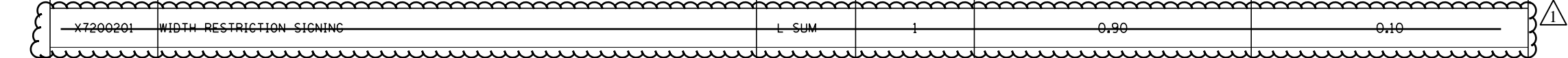
INDEX & LIST OF STANDARDS & COMMITMENTS & GENERAL NOTES

SCALE: N.T.S. SHEET 1 OF 1 SHEETS STA. 451+47.60 TO STA. 975+18.82

F.A.P. RTE.	SECTION	COUNTY	TOTAL SHEETS	SHEET NO.
71	(11,12)RS-3	DEWITT	80	2
CONTRACT NO. 70C16				
ILLINOIS FED. AID PROJECT				

FAP 71 (IL 54)	FAP 71 (IL 54)
RURAL 2L / 2W	URBAN 2L / 2W
MINOR ARTERIAL	MINOR ARTERIAL
STA. 451+47.60 TO STA. 955+80.00	STA. 955+80.00 TO STA. 976+02.56
DEWITT COUNTY	DEWITT COUNTY
80% FEDERAL / 20% STATE	80% FEDERAL / 20% STATE
ROADWAY	ROADWAY
0005	0005
RURAL	URBAN

CODE NO.	ITEM	UNIT	TOTAL QUANTITY		
78300200	RAISED REFLECTIVE PAVEMENT MARKER REMOVAL	EACH	650	625	25
78300202	PAVEMENT MARKING REMOVAL - WATER BLASTING	SO FT	39473	38015	1458
X4400196	HOT-MIX ASPHALT SURFACE REMOVAL, SPECIAL	SO YD	7980	7505	475
X7200201	WIDTH RESTRICTION SIGNING	L SUM	1	0.90	0.10
Z0013798	CONSTRUCTION LAYOUT	L SUM	1	0.90	0.10
Z0033700	LONGITUDINAL JOINT SEALANT	FOOT	52023	50000	2023
Z0070100	SURVEY MONUMENT COVER ASSEMBLY	EACH	15	14	1



• SPECIALTY PAY ITEM

MODEL D:\p\h\1\102180180168.07 - REG\DOT DS_187-2007_W07_IL54\04_Drawing\GEN\CAD_Sheets\DS70C16.ech-500.dgn



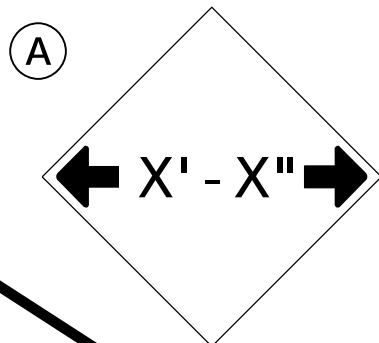
USER NAME = dcerda	DESIGNED - AAS	REVISED -
PLOT SCALE = 2,0000' / in.	DRAWN - DC, DRR	REVISED -
PLOT DATE = 1/27/2021	CHECKED - GAC	REVISED -
	DATE - 1/8/2021	REVISED -

**STATE OF ILLINOIS
DEPARTMENT OF TRANSPORTATION**

SUMMARY OF QUANTITIES

SCALE: N.T.S. SHEET X OF X SHEETS STA. TO STA.

F.A.P. RTE.	SECTION	COUNTY	TOTAL SHEETS	SHEET NO.
71	(11,12)RS-3	DEWITT	80	6
ILLINOIS FED. AID PROJECT			CONTRACT NO. 70C16	



W12-2(O)-48"x48"(1200x1200)

SIGN (A) 2 SIGNS - W12-2(O)-48"x48"(1200x1200) ARE TO BE PLACED AS SHOWN IN THE PLANS OR AS DIRECTED BY THE ENGINEER.

(B)

MAX WIDTH
 X'-X"
 X MILES
 AHEAD

RURAL 5'-0" (1.52 m) (MIN.)
 URBAN 7'-0" (2.13 m) (MIN.)

SIGN PANEL, TYPE II

(B)

MAX WIDTH
 X'-X"
 X MILES
 AHEAD

BLACK LETTERS
 (ORANGE)
 WHITE BACKGROUND

W12-1103(O)-48"x48"(1200x1200)

"D" LETTERS/NUMBERS

SIGN (B) 2 SIGNS - (SIGN PANEL, TYPE II) AS SHOWN ARE TO BE PLACED AS SHOWN IN THE PLANS OR AS DIRECTED BY THE ENGINEER.

GENERAL NOTES

1. ALL TRAFFIC CONTROL DEVICES SHALL BE FURNISHED, ERECTED AND MAINTAINED BY THE CONTRACTOR.
2. ALL (B) SIGNS SHALL HAVE FLAGS INSTALLED UNLESS OTHERWISE DIRECTED.
3. LOCATIONS OF TRAFFIC CONTROL DEVICES MAY BE ADJUSTED BY THE ENGINEER.
4. ALL TRAFFIC CONTROL SHOWN ON THIS SHEET SHALL BE PAID FOR AT THE CONTRACT LUMP SUM PRICE FOR WIDTH RESTRICTION SIGNING.
5. ALL SIGNS SHALL BE POST MOUNTED UNLESS OTHERWISE DIRECTED.
6. ALL SIGNS SHOWN ORANGE (O) SHALL BE FLUORESCENT ORANGE.
7. ALL SIGNS SHOWN SHALL CONSIST OF THE CURRENT RETROREFLECTIVE SHEETING REQUIREMENTS AS OUTLINED IN SECTION 1106.01 OF THE STANDARD SPECIFICATIONS BOOK.

Note: All dimensions are in INCHES (millimeters) unless otherwise shown.

M:\CEN\101\101180180168107 - REG\DOT.DS 187-2007.W07_IL54104.Drawing\SIGN\CAD_Sheets\05700168111-0818-COB18116.dgn



USER NAME = sllsanby	DESIGNED - AAS	REVISED -
DRAWN - DC, DRR	CHECKED - GAC	REVISED -
PLOT SCALE = 40.0000" / 1in	DATE - 1/8/2021	REVISED -
PLOT DATE = 1/26/2021		

STATE OF ILLINOIS
 DEPARTMENT OF TRANSPORTATION

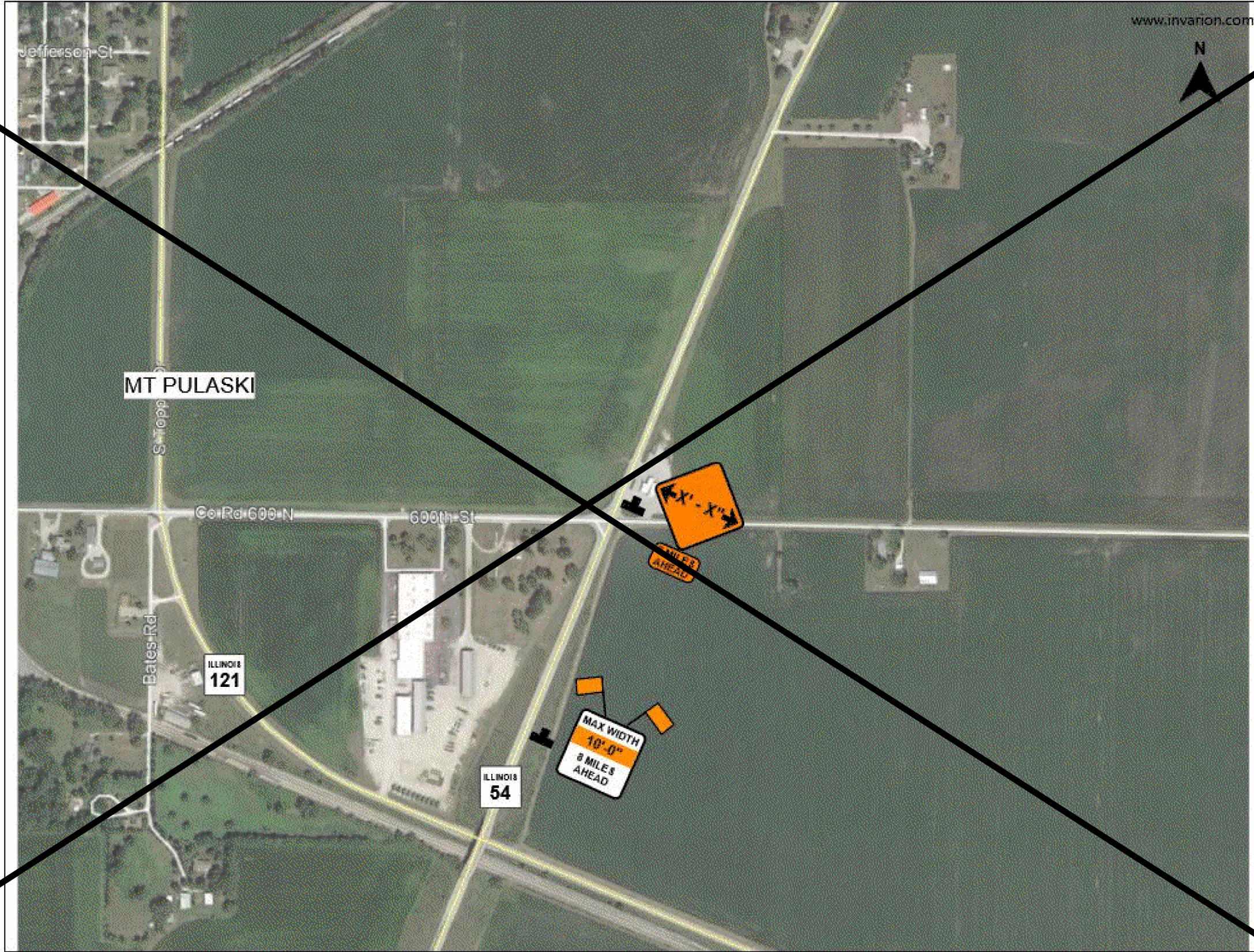
WIDTH RESTRICTION SIGNING

SCALE: SHEET 1 OF 1 SHEETS STA. TO STA.

DISTRICT 5 DETAIL NO. X7200201

F.A.P. RTE.	SECTION	COUNT	TOTAL SHEETS	SHEET NO.
71	(11,12)RS-3	DEWITT	80	48

CONTRACT NO. 10C16



www.invarion.com

N

MT PULASKI

Co Rd 600 N

600th St

ILLINOIS 121

ILLINOIS 54

MAX WIDTH 10'-0" 8 MILES AHEAD

1 MILE AHEAD

MODEL: 11/16/21
 FILE: W:\121211801B0168.07 - REG.DOT.DS - 1B7-2021.W07.ILL5404 - Drawings\DC\CAD_Sheets\12121180168-07-1B7-2021.W07.VRS\SignMap.dgn



USER NAME = dcerda
 PLOT SCALE = 20,000' / in.
 PLOT DATE = 1/26/2021

DESIGNED -	AAS	REVISED -	
DRAWN -	DC, DRR	REVISED -	
CHECKED -	GAC	REVISED -	
DATE -	1/8/2021	REVISED -	

**STATE OF ILLINOIS
DEPARTMENT OF TRANSPORTATION**

WIDTH RESTRICTION SIGNING

SCALE: N.T.S. SHEET 2 OF 4 SHEETS STA. TO STA.

F.A.P. RTE.	SECTION	COUNTY	TOTAL SHEETS	SHEET NO.
71	(11,12)RS-3	DEWITT	49	49
ILLINOIS FED. AID PROJECT				CONTRACT NO. 16

⚠ SHEET DELETED 4/6/21



MODEL: 11/20/2021 10:18:01 180168.07 - KEG:IDOT.DS_1B7-2021_W07_IL54104_DrawingIDGNCAD_Sheets10570616-act.WBSignMap.dgn
 FILE: W:\1120\1120180168.dgn



USER NAME = dcerda
 PLOT SCALE = 20.0000' / in.
 PLOT DATE = 1/26/2021

DESIGNED - AAS
 DRAWN - DC, DRR
 CHECKED - GAC
 DATE - 1/8/2021

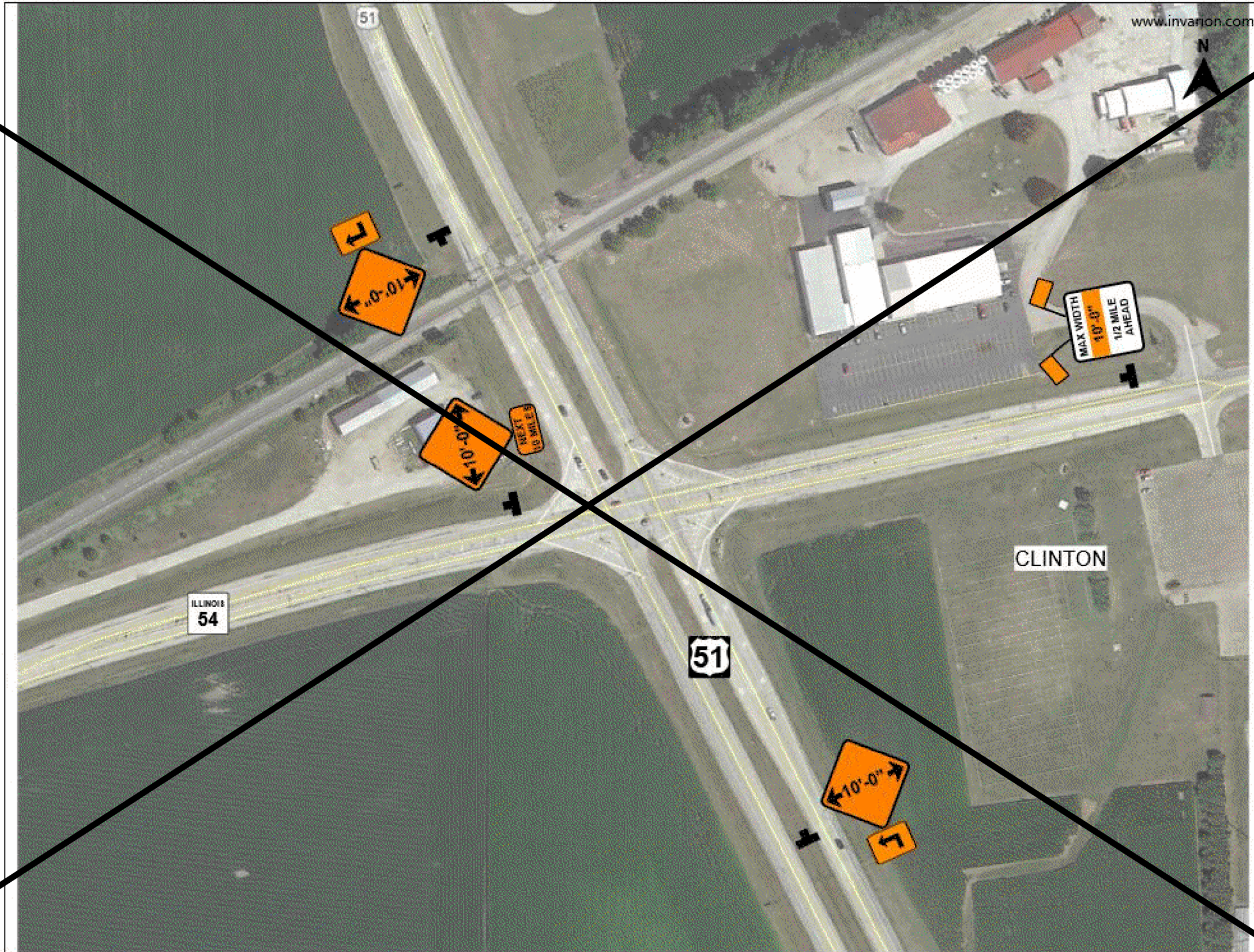
REVISED -
 REVISED -
 REVISED -
 REVISED -

STATE OF ILLINOIS
DEPARTMENT OF TRANSPORTATION

WIDTH RESTRICTION SIGNING

SCALE: N.T.S. SHEET 3 OF 4 SHEETS STA. TO STA.

F.A.P. RTE.	SECTION	COUNTY	TOTAL SHEETS	SHEET NO.
71	(11,12)RS-3	DEWITT	50	50
CONTRACT NO. 19C16				
ILLINOIS FED. AID PROJECT				



MICHELLE...
 FILE NAME: I:\2021\11\18\110180168.07 - KEG.IDOT.DS_1187-2021.W07_IL54\04_Drawing\DC\NCAD_Sheets\DS70C16-act.VRS\SignMap.dgn

Farnsworth GROUP
 2708 MCGRAW DRIVE
 BLOOMINGTON, ILLINOIS 61704
 (309) 663-8435 / info@f-w.com

USER NAME = dcerda
 PLOT SCALE = 20.0000" / in.
 PLOT DATE = 1/26/2021

DESIGNED - AAS
 DRAWN - DC, DRR
 CHECKED - GAC
 DATE - 1/8/2021

REVISED -
 REVISED -
 REVISED -
 REVISED -

**STATE OF ILLINOIS
 DEPARTMENT OF TRANSPORTATION**

WIDTH RESTRICTION SIGNING

SCALE: N.T.S. SHEET 4 OF 4 SHEETS STA. TO STA.

F.A.P. RTE.	SECTION	COUNTY	TOTAL SHEETS	SHEET NO.
71	(11,12)RS-3	DEWITT	51	51
				CONTRACT NO. 7116
ILLINOIS FED. AID PROJECT				