

FOR INDEX OF SHEETS, SEE SHEET NO. 2
 FOR SUMMARY OF QUANTITIES, SEE SHEETS NO. 3 TO 4

STATE OF ILLINOIS 04-23-2021 LETTING ITEM 125
 DEPARTMENT OF TRANSPORTATION

F.A.P. RTE.	SECTION	COUNTY	TOTAL SHEETS	SHEET NO.
760	124RS-7	DEWITT	47*	1
		ILLINOIS	CONTRACT NO. 70E83	

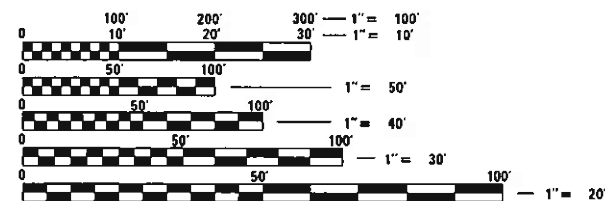
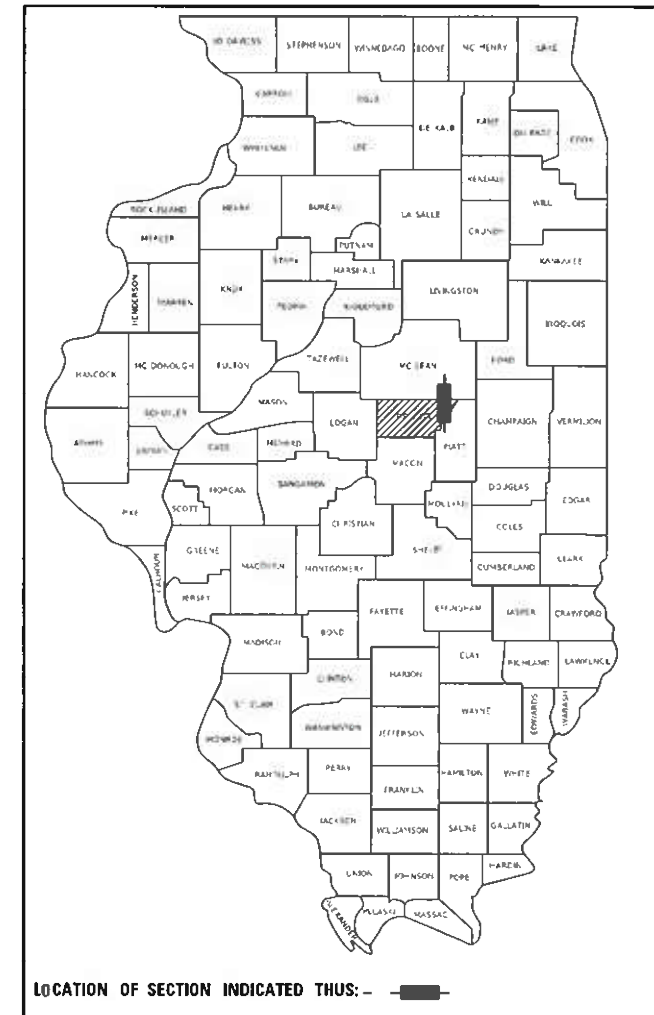
* 47 - 3 (DELETED SHEETS) = 44 TOTAL SHEETS

PROPOSED HIGHWAY PLANS

ROUTE FAP 760 (ILL 48)
 SECTION 124RS-7
 PROJECT STP-1SB2(085)
 SMART OVERLAY
 DEWITT COUNTY

C-95-092-20
 ILL 54 TO ILL 10 N OF WELDON

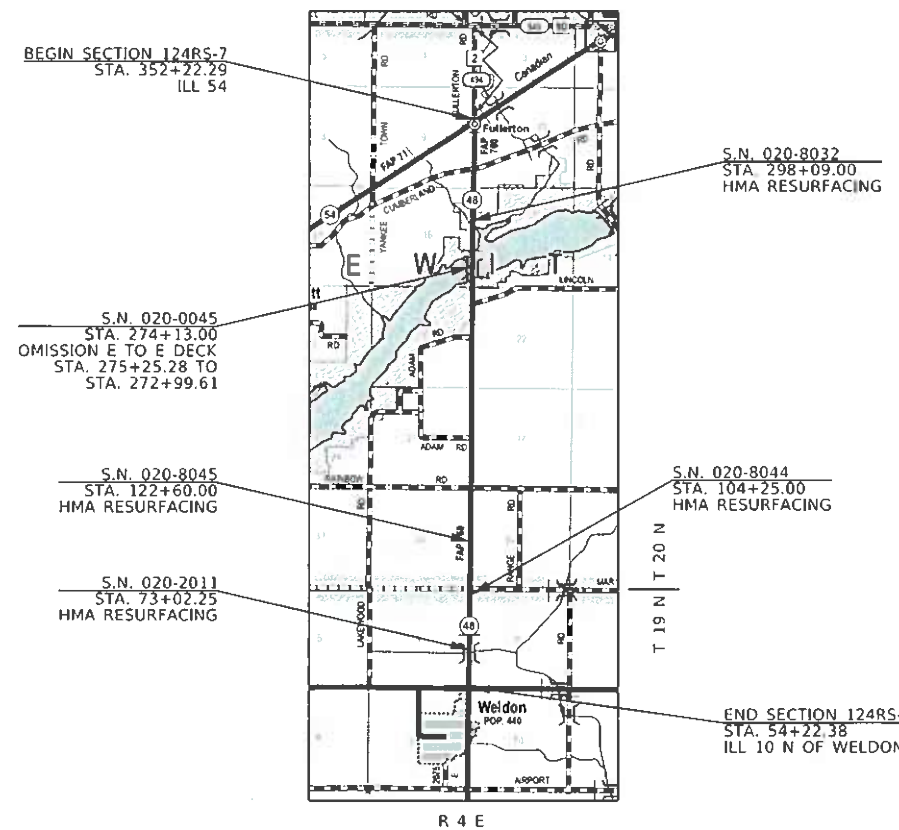
TRAFFIC DATA	
2020 ADT	= 1,000
PV %	= 83.0%
SU %	= 3.0%
MU %	= 14.0%



FULL SIZE PLANS HAVE BEEN PREPARED USING STANDARD ENGINEERING SCALES. REDUCED SIZED PLANS WILL NOT CONFORM TO STANDARD SCALES. IN MAKING MEASUREMENTS ON REDUCED PLANS, THE ABOVE SCALES MAY BE USED.

J.U.L.I.E.
 JOINT UTILITY LOCATION INFORMATION FOR EXCAVATORS
 1-800-892-0123 TOWNSHIPS:
 OR 811 DEWITT, NIXON

PROJECT ENGINEER: JASON W. STULTS
 SQUAD LEADER: RYAN T. CARROLL
 DESIGNER: BRADLEY A. FARNHAM
 TYLER J. PIERSON
 PHONE: (217)-465-4181
 CONTRACT NO. 70E83



GROSS LENGTH = 29,799.91 FT. = 5.644 MILE
 NET LENGTH = 29,574.24 FT. = 5.601 MILE

FUNCTIONAL CLASSIFICATION:
 MINOR ARTERIAL

STATE OF ILLINOIS
 DEPARTMENT OF TRANSPORTATION

SUBMITTED 1/20 2021
Kensil A. Mansueti
 REGIONAL ENGINEER

March 19, 2021
Scott A. Elk
 ENGINEER OF DESIGN AND ENVIRONMENT

March 19, 2021
James J. Gu
 DIRECTOR OF HIGHWAYS PROJECT IMPLEMENTATION 13

PRINTED BY THE AUTHORITY
 OF THE STATE OF ILLINOIS

INDEX OF SHEETS

SHEET NO.	DESCRIPTION
1	COVER
2	INDEX OF SHEETS, LIST OF HIGHWAY STANDARDS, & COMMITMENTS
3 to 4	SUMMARY OF QUANTITIES
5 to 9	TYPICAL CROSS SECTIONS
10 to 13	SCHEDULE OF QUANTITIES
14	CONTROL POINTS
15 to 24	ILL 48 PLAN SHEETS
25	ILL 54 & ILL 48 INTERSECTION STRIPING DETAIL
26	S.N. 020-2011 GUARDRAIL DETAIL
27	S.N. 020-8045 GUARDRAIL DETAIL
28 to 29	S.N. 020-0045 GUARDRAIL DETAIL
30	S.N. 020-8032 GUARDRAIL DETAIL
31 to 32	WIDTH RESTRICTION MAP DETAIL
33 to 34	DISTRICT 5 DETAIL - FIELD ENTRANCES (NONCOMMERCIAL)
35 to 36	DISTRICT 5 DETAIL - MAILBOX TURNOUT (RURAL)
36 to 37	DISTRICT 5 DETAIL - PRIVATE COMMERCIAL ENTRANCES (NONCOMMERCIAL AND COMMERCIAL RURAL)
38 to 39	DISTRICT 5 DETAIL - SIDEROAD & SIDEStreETS (RURAL)
40 to 43	DISTRICT 5 DETAIL - PAVEMENT MARKING AND MARKERS
44	DISTRICT 5 DETAIL - SURVEY MARKER VAULT
45	DISTRICT 5 DETAIL - SURVEY MARKER TYPE 1 & 2 (SPECIAL)
46	DISTRICT 5 DETAIL - RUMBLE STRIP (ADVANCE OF INTERSECTIONS)
47	DISTRICT 5 DETAIL - WIDTH RESTRICTION SIGNING

LIST OF STANDARDS

STANDARD NO.	DESCRIPTION
000001-08	STANDARD SYMBOLS, ABBREVIATIONS AND PATTERNS
001006	DECIMAL OF AN INCH AND OF A FOOT
406201-01	MAILBOX TURNOUT
442201-03	CLASS C AND D PATCHES
630001-12	STEEL PLATE BEAM GUARDRAIL
630101-10	STRONG POST GUARDRAIL ATTACHED TO CULVERT
630106-02	LONG-SPAN GUARDRAIL OVER CULVERT
630301-09	SHOULDER WIDENING FOR TYPE 1 (SPECIAL) GUARDRAIL TERMINALS
631031-17	TRAFFIC BARRIER TERMINAL, TYPE 6
642006-01	SHOULDER RUMBLE STRIPS, 8 IN.
701001-02	OFF-ROAD OPERATIONS, 2L, 2W, MORE THAN 15' (4.5 M) AWAY
701006-05	OFF-ROAD OPERATIONS, 2L, 2W, 15' (4.5 M) TO 24" (600 MM) FROM PAVEMENT
701011-04	OFF-ROAD MOVING OPERATIONS, 2L, 2W, DAY ONLY
701201-05	LANE CLOSURE, 2L, 2W, DAY ONLY, FOR SPEEDS > 45 MPH
701301-04	LANE CLOSURE, 2L, 2W, SHORT TIME OPERATIONS
701306-04	LANE CLOSURE, 2L, 2W, SLOW MOVING OPERATIONS DAY ONLY, FOR SPEEDS > 45
701311-03	LANE CLOSURE, 2L, 2W, MOVING OPERATIONS - DAY ONLY
701336-07	LANE CLOSURE, 2L, 2W, WORK AREAS IN SERIES, FOR SPEEDS > 45 MPH
701901-08	TRAFFIC CONTROL DEVICES
725001-01	OBJECT AND TERMINAL MARKERS
780001-05	TYPICAL PAVEMENT MARKINGS
781001-04	TYPICAL APPLICATIONS RAISED REFLECTIVE PAVEMENT MARKERS
782006-01	GUARDRAIL AND BARRIER WALL REFLECTOR MOUNTING DETAILS

GENERAL NOTES

G.N. -100A
ELECTRONIC FILES AND/OR ELECTRONIC SURVEY INFORMATION INCLUDING CADD FILES WILL NOT BE AVAILABLE TO THE CONTRACTOR.

G.N. -105 09A
ALL ELEVATIONS SHOWN IN THE PLANS ARE BASED ON NORTH AMERICAN VERTICAL DATUM OF 1988 (NAVD 88)

G.N. -406H

MIXTURE REQUIREMENTS
THE FOLLOWING MIXTURE REQUIREMENTS ARE APPLICABLE FOR THIS PROJECT:

Location Mixture Use	IL 48 Surface Shoulder	IL 48 Incidental	IL 48 Class D Patch
AC/PG	PG 64-22	PG 64-22	PG 64-22
Design Air Voids	4.0% @ Ndes=50	4.0% @ Ndes=50	4.0% @ Ndes=50
Mix Comp(Gratation)	IL 9.5	IL 9.5	IL 19.0
Friction Aggregate	Mix C	Mix C	N.A.
Mixture Weight	112	112	112
Quality Management Program	OCP	QC/QA	QC/QA
Sublot Size	1000	N.A	N.A.

G.N. - 703A
SHORT TERM PAVEMENT MARKING SHALL BE APPLIED TO THE PAVEMENT AFTER ANY OF THE FOLLOWING: COLD MILLING AND/OR PLACING BITUMINOUS MATERIALS (TACK COAT), LEVELING BINDER (MACHINE METHOD), BINDER AND SURFACE COURSES. SHORT TERM PAVEMENT MARKING PLACED ON THE SURFACE SHALL COINCIDE WITH THE FINAL PAVEMENT STRIPING. SHORT TERM PAVEMENT MARKING PLACED PRIOR TO THE SURFACE SHALL COINCIDE WITH THE EXISTING PAVEMENT MARKINGS. USE 4 FEET PER 40 FEET (OR 10% PER STATION).

G.N. - 781
THE FINAL PAVEMENT MARKINGS SHALL BE IN PLACE PRIOR TO PLACING THE RAISED REFLECTIVE PAVEMENT MARKERS.

AN EMPTY MTD WITH A MAXIMUM GROSS WEIGHT RESTRICTION OF 40 TONS IS ALLOWED OVER ALL STRUCTURES.

COMMITMENTS

THERE ARE NO COMMITMENTS FOR THIS CONTRACT.

**STATE OF ILLINOIS
DEPARTMENT OF TRANSPORTATION**

**INDEX OF SHEETS, GENERAL NOTES,
LIST OF STANDARDS, & COMMITMENTS**

USER NAME = PiersonTJ	DESIGNED -	REVISED -
PLOT SCALE = 40.0000' / in	DRAWN -	REVISED -
PLOT DATE = 1/20/2021	CHECKED -	REVISED -
	DATE -	REVISED -

SCALE: SHEET 1 OF 1 SHEETS STA. TO STA.

F.A.P. RTE.	SECTION	COUNTY	TOTAL SHEETS	SHEET NO.
760	124RS-7	DE WITT	47	2
			CONTRACT NO. 70E83	
ILLINOIS FED. AID PROJECT				

SUMMARY OF QUANTITIES

LOCATION OF WORK: FAP 760 (ILL 48)
 MINOR ARTERIAL
 RURAL
 STA. 352+22.29
 TO
 STA. 54+22.38
 DEWITT
 FUNDING BREAKOUT: 80% FED / 20% STATE
 CONSTRUCTION TYPE CODE: 0005

LOCATION OF WORK: FAP 760 (ILL 48)
 MINOR ARTERIAL
 RURAL
 STA. 352+22.29
 TO
 STA. 54+22.38
 DEWITT
 FUNDING BREAKOUT: 80% FED / 20% STATE
 CONSTRUCTION TYPE CODE: 0005

CODE NO.	ITEM	UNIT	TOTAL QUANTITY
70300100	SHORT TERM PAVEMENT MARKING	FOOT	6,080.00
70300150	SHORT TERM PAVEMENT MARKING REMOVAL	SQ FT	2,008.00
70300220	TEMPORARY PAVEMENT MARKING - LINE 4"	FOOT	70,965.00
70300260	TEMPORARY PAVEMENT MARKING - LINE 12"	FOOT	75.00
70300280	TEMPORARY PAVEMENT MARKING - LINE 24"	FOOT	45.00
* 72501000	TERMINAL MARKER - DIRECT APPLIED	EACH	16.00
* 78000200	THERMOPLASTIC PAVEMENT MARKING - LINE 4"	FOOT	169.00
* 78000600	THERMOPLASTIC PAVEMENT MARKING - LINE 12"	FOOT	75.00
* 78000650	THERMOPLASTIC PAVEMENT MARKING - LINE 24"	FOOT	45.00
* 78001110	PAINT PAVEMENT MARKING - LINE 4"	FOOT	70,796.00
* 78100100	RAISED REFLECTIVE PAVEMENT MARKER	EACH	390.00
* 78200005	GUARDRAIL REFLECTORS, TYPE A	EACH	65.00
78300200	RAISED REFLECTIVE PAVEMENT MARKER REMOVAL	EACH	390.00
78300202	PAVEMENT MARKING REMOVAL - WATER BLASTING	SQ FT	5,161.00

*= SPECIALTY ITEM

CODE NO.	ITEM	UNIT	TOTAL QUANTITY
X4400196	HOT-MIX ASPHALT SURFACE REMOVAL, SPECIAL	SQ YD	1,450.00
X7700701	WIDTH RESTRICTION SIGNING	L SUM	1.00
* X7830070	GROOVING FOR RECESSED PAVEMENT MARKING 5"	FOOT	169.00
* X7830078	GROOVING FOR RECESSED PAVEMENT MARKING 13"	FOOT	75.00
* X7830090	GROOVING FOR RECESSED PAVEMENT MARKING 25"	FOOT	45.00
* XZ193400	SURVEY MARKER, TYPE 2 (SPECIAL)	EACH	3.00
Z0013798	CONSTRUCTION LAYOUT	L SUM	1.00
Z0033700	LONGITUDINAL JOINT SEALANT	FOOT	29,575.00
Z0055300	RUMBLE STRIP	EACH	3.00
* Z0070202	SURVEY MARKER VAULT	EACH	2.00

*= SPECIALTY ITEM

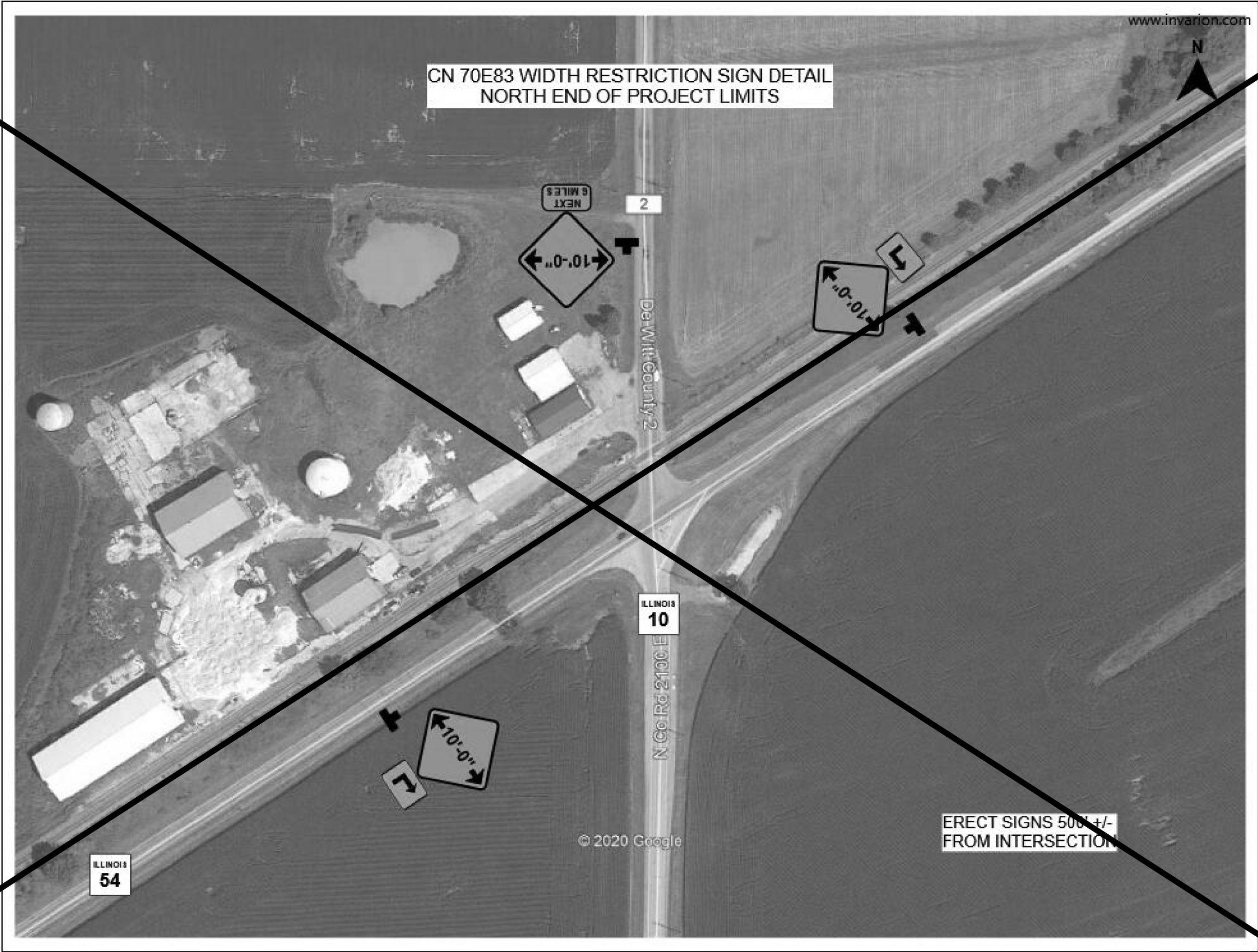
MODEL: \\MODEL\MRFS
 FILE NAME: P:\pub\mcom\mdata\illinois\poc\RWIDOT\Documents\DOT Office\Drawings\Projects\70E83\CADDData\CAD\Sheet\0570E83-4-1-500.dgn

USER NAME = PiersonJ	DESIGNED -	REVISED -
PLOT SCALE = 40,0000 ' / in.	DRAWN -	REVISED -
PLOT DATE = 1/20/2021	CHECKED -	REVISED -
	DATE -	REVISED -

**STATE OF ILLINOIS
 DEPARTMENT OF TRANSPORTATION**

SUMMARY OF QUANTITIES	
SCALE:	SHEET 2 OF 2 SHEETS STA. TO STA.

F.A.P. RTE.	SECTION	COUNTY	TOTAL SHEETS	SHEET NO.
760	124RS-7	DE WITT	47	4
			CONTRACT NO. 70E83	
ILLINOIS FED. AID PROJECT				



CN 70E83 WIDTH RESTRICTION SIGN DETAIL
NORTH END OF PROJECT LIMITS

www.invarion.com



NEXT
6 MILES

2

De Witt County 2

ILLINOIS
10

N Co Rd 2100 E

ILLINOIS
54

ERECT SIGNS 500 +/-
FROM INTERSECTION

© 2020 Google

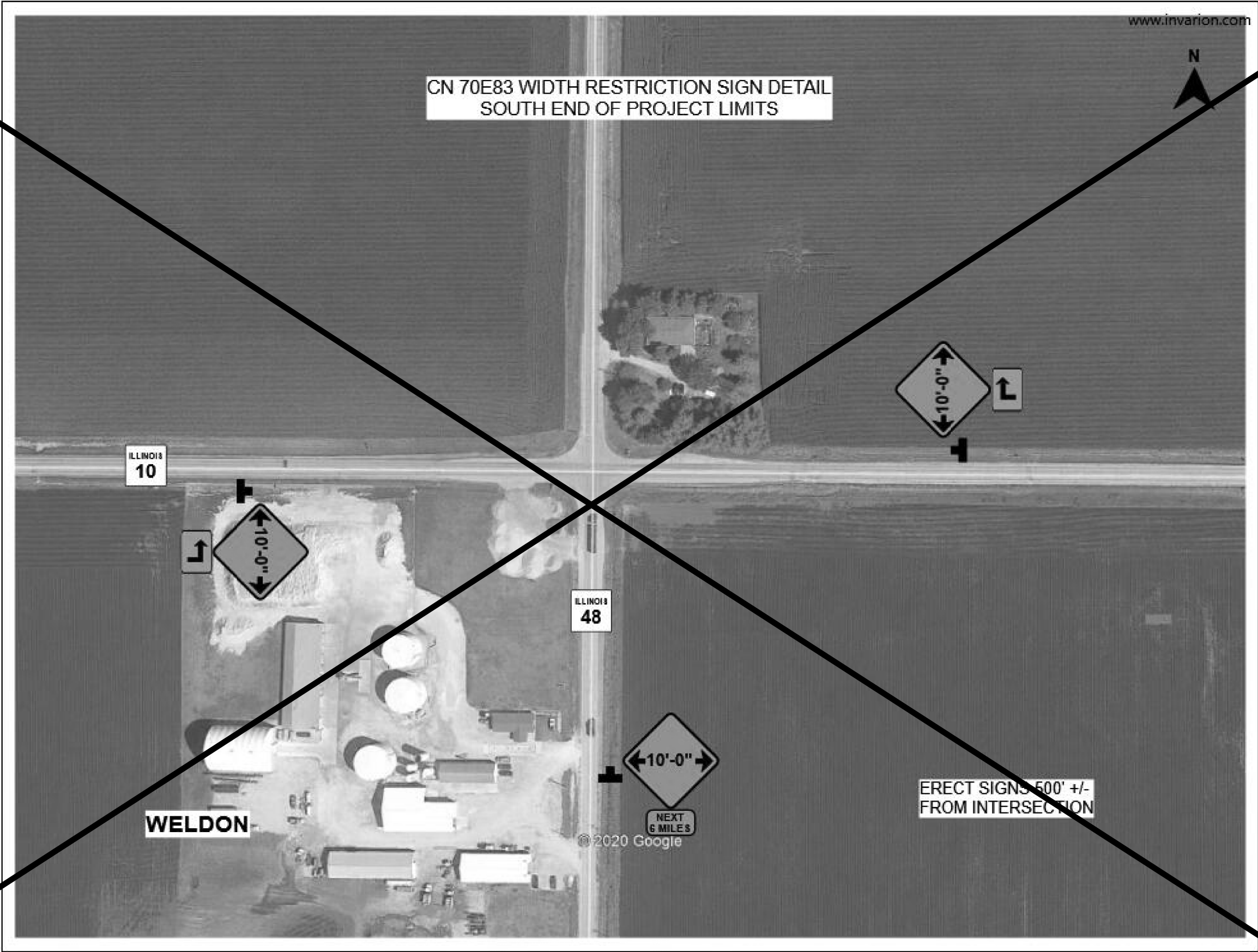
MODEL NAME: \\p10010001\pub\mxd\dot\Documents\DOT_Offices\District 5\Projects\0570E83\CAD\data\CAD\sheet\0570E83-ht-Detail\Width Restriction_Map.dgn
 FILE NAME: \\p10010001\pub\mxd\dot\Documents\DOT_Offices\District 5\Projects\0570E83\CAD\data\CAD\sheet\0570E83-ht-Detail\Width Restriction_Map.dgn

USER NAME = PiersonTJ	DESIGNED -	REVISED -
	DRAWN -	REVISED -
PLOT SCALE = 40.0000 ' / in.	CHECKED -	REVISED -
PLOT DATE = 1/20/2021	DATE -	REVISED -

STATE OF ILLINOIS
DEPARTMENT OF TRANSPORTATION

SCALE: N.T.S. SHEET 2 OF 2 SHEETS STA. TO STA.

F.A.P. RTE.	SECTION	COUNT	TOTAL SHEETS	SHEET NO.
760	124RS-7	DE WITT	47	31
CONTRACT NO. 0570E83				

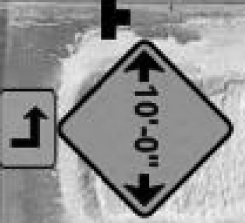


CN 70E83 WIDTH RESTRICTION SIGN DETAIL
SOUTH END OF PROJECT LIMITS

www.invarion.com

N

ILLINOIS
10



ILLINOIS
48



WELDON

ERECT SIGNS 500' +/-
FROM INTERSECTION

MODEL: \\001\DEL\NAME: ...
 FILE: \\001\del\name: ...

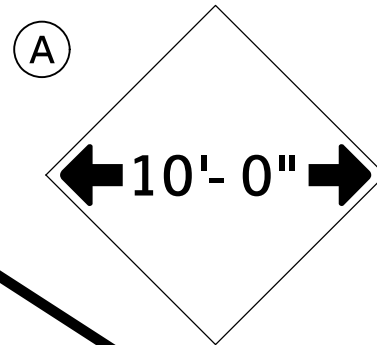
USER NAME = PiersonTJ	DESIGNED -	REVISED -
	DRAWN -	REVISED -
PLOT SCALE = 40,0000 ' / in.	CHECKED -	REVISED -
PLOT DATE = 1/20/2021	DATE -	REVISED -

STATE OF ILLINOIS
DEPARTMENT OF TRANSPORTATION

WIDTH RESTRICTION MAP DETAIL

SCALE: N.T.S. SHEET 1 OF 2 SHEETS STA. TO STA.

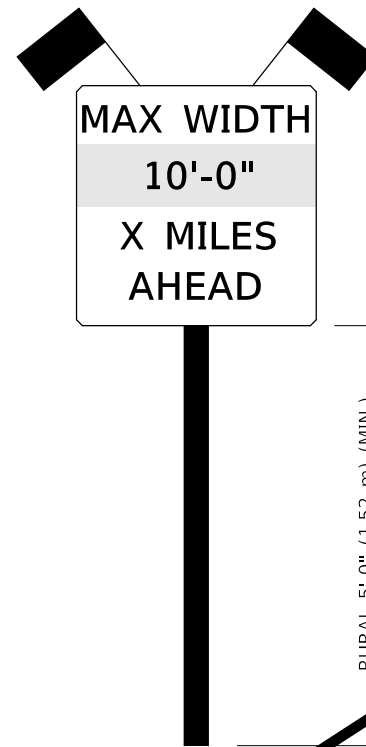
F.A.P. RTE.	SECTION	COUNTY	TOTAL SHEETS	SHEET NO.
760	124RS-7	DE WITT	47	32
CONTRACT NO. 70E83				



W12-2(O)-48"x48"(1200x1200)

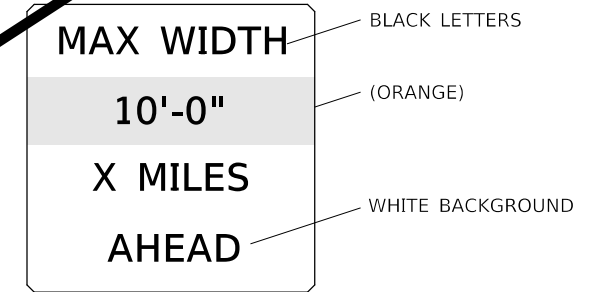
SIGN (A) 2 SIGNS - W12-2(O)-48"x48"(1200x1200) ARE TO BE PLACED AS SHOWN IN THE PLANS OR AS DIRECTED BY THE ENGINEER.

(B)



SIGN PANEL, TYPE II

(B)



W12-I103(O)-48"x48"(1200x1200)
"D" LETTERS/NUMBERS

SIGN (B) 2 SIGNS - (SIGN PANEL, TYPE II) AS SHOWN ARE TO BE PLACED AS SHOWN IN THE PLANS OR AS DIRECTED BY THE ENGINEER.

GENERAL NOTES

1. ALL TRAFFIC CONTROL DEVICES SHALL BE FURNISHED, ERECTED AND MAINTAINED BY THE CONTRACTOR.
2. ALL (B) SIGNS SHALL HAVE FLAGS INSTALLED UNLESS OTHERWISE DIRECTED.
3. LOCATIONS OF TRAFFIC CONTROL DEVICES MAY BE ADJUSTED BY THE ENGINEER.
4. ALL TRAFFIC CONTROL SHOWN ON THIS SHEET SHALL BE PAID FOR AT THE CONTRACT LUMP SUM PRICE FOR WIDTH RESTRICTION SIGNING.
5. ALL SIGNS SHALL BE POST MOUNTED UNLESS OTHERWISE DIRECTED.
6. ALL SIGNS SHOWN ORANGE (O) SHALL BE FLUORESCENT ORANGE.
7. ALL SIGNS SHOWN SHALL CONSIST OF THE CURRENT RETROREFLECTIVE SHEETING REQUIREMENTS AS OUTLINED IN SECTION 1106.01 OF THE STANDARD SPECIFICATIONS BOOK.

Note: All dimensions are in INCHES (millimeters) unless otherwise shown.

MODEL NAME: C:\p1\m1200m1200.dwg
 FILE NAME: C:\p1\m1200m1200.dwg
 PROJECT: I:\Projects\1200m1200\1200m1200.dwg
 OFFICE: DISTRICT 5
 SHEET: 47
 DATE: 1/20/2021

USER NAME = PiersonTJ	DESIGNED -	REVISED - 05/08
	DRAWN -	REVISED - 10/08 KJT
PLOT SCALE = 40.0000 ' / in.	CHECKED -	REVISED - 07/09 KJT
PLOT DATE = 1/20/2021	DATE -	REVISED - 03/11 KJT

**STATE OF ILLINOIS
DEPARTMENT OF TRANSPORTATION**

WIDTH RESTRICTION SIGNING

SCALE: N.T.S. SHEET 1 OF 1 SHEETS STA. TO STA.

DISTRICT 5 DETAIL NO. X7200201			
F.A.P. RTE.	SECTION	COUNT	TOTAL SHEETS
760	124RS-7	DE WITT	47
		CONTRACT NO.	0883