
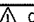


SPECIALTY ITEM	SPECIAL PROVISION	CODE NO.	ITEM	UNIT	TOTAL QUANTITY	CONSTRUCTION CODE	
						ROADWAY 80% FEDERAL 20% LOCAL 0004	LANDSCAPING 100% CITY OF LOCKPORT 0004
	*	20200100	EARTH EXCAVATION	CU YD	1,700	0	1,700
		20800150	TRENCH BACKFILL	CU YD	100	100	0
		21101615	TOPSOIL FURNISH AND PLACE, 4"	SQ YD	300	0	300
#		21101805	COMPOST FURNISH AND PLACE, 2"	SQ YD	156	0	156
#		25200110	SODDING, SALT TOLERANCE	SQ YD	300	0	300
#	*	25200200	SUPPLEMENTAL WATERING	UNIT	5	0	5
		28000510	INLET FILTERS	EACH	31	31	0
		35101800	AGGREGATE BASE COURSE, TYPE B, 6"	SQ YD	2,400	0	2,400
		35102200	AGGREGATE BASE COURSE, TYPE B, 10"	SQ YD	500	0	500
		40600290	BITUMINOUS MATERIALS (TACK COAT)	POUND	290	290	0
		40600982	HOT-MIX ASPHALT SURFACE REMOVAL- BUTT JOINT 	SQ YD	200	200	0
		40603200	POLYMERIZED HOT-MIX ASPHALT BINDER COURSE, IL-4.75, N50	TON	400	400	0
		40604172	POLYMERIZED HOT-MIX ASPHALT SURFACE COURSE, IL-9.5, MIX "E", N70	TON	800	800	0
	*	42400200	PORTLAND CEMENT CONCRETE SIDEWALK 5 INCH	SQ FT	16,500	0	16,500
	*	42400800	DETECTABLE WARNINGS	SQ FT	194	0	194
		44000100	PAVEMENT REMOVAL	SQ YD	560	560	0
		44000200	DRIVEWAY PAVEMENT REMOVAL	SQ YD	72	0	72
		44000500	COMBINATION CURB AND GUTTER REMOVAL	FOOT	1,900	1,900	0



USER NAME = msladek	DESIGNED -	REVISED -  04/08/2021
PLOT SCALE = 2.0000' / in.	DRAWN -	REVISED -
PLOT DATE = 4/8/2021	CHECKED -	REVISED -
	DATE -	REVISED -

**STATE OF ILLINOIS  
DEPARTMENT OF TRANSPORTATION**


**SUMMARY OF QUANTITIES**

SCALE: NONE SHEET 1 OF 8 SHEETS STA. TO STA.

F.A.P. RTE. 351/577	SECTION 19-00089-00-LS	COUNTY WILL	TOTAL SHEETS 84	SHEET NO. 3
CONTRACT NO. 61G95			ILLINOIS FED. AID PROJECT	

SPECIALTY ITEM	SPECIAL PROVISION	CODE NO.	ITEM	UNIT	TOTAL QUANTITY	CONSTRUCTION CODE	
						ROADWAY 80% FEDERAL 20% LOCAL 0004	LANDSCAPING 100% CITY OF LOCKPORT 0004
		60219300	MANHOLE, TYPE A, 4'- DIAMETER, TYPE 11 FRAME AND GRATE	EACH	2	2	0
		60236800	INLET, TYPE A, TYPE 11 FRAME AND GRATE	EACH	1	1	0
		60248700	VALVE VAULTS, TYPE A, 4' DIAMETER, TYPE 1 CLOSED LID	EACH	3	0	3
		60266600	VALVE BOXES TO BE ADJUSTED	EACH	31	31	0
		60500040	REMOVING MANHOLES	EACH	3	3	0
		60500050	REMOVING CATCH BASINS	EACH	2	2	0
		60500060	REMOVING INLETS	EACH	4	4	0
	*	60600605	CONCRETE CURB, TYPE B	FOOT	700	0	700
		60603800	COMBINATION CONCRETE CURB AND GUTTER, TYPE B-6.12	FOOT	1,500	1,500	0
		60605000	COMBINATION CONCRETE CURB AND GUTTER, TYPE B-6.24	FOOT	250	250	0
		60605900	COMBINATION CONCRETE CURB AND GUTTER, TYPE B-9.12	FOOT	100	100	0
#	*	66900200	NON-SPECIAL WASTE DISPOSAL	CU YD	660	0	660
		67100100	MOBILIZATION	LSUM	1	0.5	0.5
#	*	66900530	SOIL DISPOSAL ANALYSIS	EACH	6	0	6
		70102626	TRAFFIC CONTROL AND PROTECTION, STANDARD 701606	EACH	2	1	1
#	*	66901001	REGULATED SUBSTANCES PRE-CONSTRUCTION PLAN	LSUM	1	0	1
		70102637	TRAFFIC CONTROL AND PROTECTION, STANDARD 701701	EACH	2	1	1
#	*	66901003	REGULATED SUBSTANCES FINAL CONSTRUCTION REPORT	LSUM	1	0	1
		70102642	TRAFFIC CONTROL AND PROTECTION, STANDARD 701801	EACH	4	2	2
#	*	66901006	REGULATED SUBSTANCES MONITORING	CAL DA	8	0	8
#		72000100	SIGN PANEL - TYPE 1	SQ FT	65	0	65
#		72000200	SIGN PANEL - TYPE 2	SQ FT	50	0	50
#		72400100	REMOVE SIGN PANEL ASSEMBLY - TYPE A	EACH	2	0	2

△  
△  
△  
△  
△


SPECIALTY ITEM	SPECIAL PROVISION	CODE NO.	ITEM	UNIT	TOTAL QUANTITY	CONSTRUCTION CODE	
						ROADWAY 80% FEDERAL 20% LOCAL 0004	LANDSCAPING 100% CITY OF LOCKPORT 0004
#		72400310	REMOVE SIGN PANEL - TYPE I	SQ FT	36	0	36
#		72400320	REMOVE SIGN PANEL - TYPE II	SQ FT	50	0	50
#		72400500	RELOCATE SIGN PANEL ASSEMBLY - TYPE A	EACH	3	0	3
#		72800100	TELESCOPING STEEL SIGN SUPPORT 	FOOT	115	0	115
#		78000100	THERMOPLASTIC PAVEMENT MARKING - LETTERS AND SYMBOLS	SQ FT	99	99	0
#		78000200	THERMOPLASTIC PAVEMENT MARKING - LINE 4"	FOOT	3,946	3,946	0
#		78000400	THERMOPLASTIC PAVEMENT MARKING - LINE 6"	FOOT	465	465	0
#		78000600	THERMOPLASTIC PAVEMENT MARKING - LINE 12"	FOOT	277	277	0
#		78000650	THERMOPLASTIC PAVEMENT MARKING - LINE 24"	FOOT	129	129	0
#		78100100	RAISED REFLECTIVE PAVEMENT MARKER	EACH	70	70	0
#		78300200	RAISED REFLECTIVE PAVEMENT MARKER REMOVAL	EACH	56	56	0
#		78300202	PAVEMENT MARKING REMOVAL - WATER BLASTING	SQ FT	9	9	0
#	*	81028200	UNDERGROUND CONDUIT, GALVANIZED STEEL, 2" DIA.	FOOT	87	0	87
#		81028220	UNDERGROUND CONDUIT, GALVANIZED STEEL, 3" DIA.	FOOT	75	0	75
#	*	81028240	UNDERGROUND CONDUIT, GALVANIZED STEEL, 4" DIA.	FOOT	162	0	162
#		81400730	HANDHOLE, COMPOSITE CONCRETE	EACH	16	0	16
#		81603010	UNIT DUCT, 600V, 2-1C NO.10, 1/C NO.10 GROUND, (XLP-TYPE USE), 3/4" DIA. POLYETHYLENE	FOOT	727	0	727
#		81603065	UNIT DUCT, 600V, 2-1C NO.2, 1/C NO.2 GROUND, (XLP-TYPE USE), 1 1/4" DIA. POLYETHYLENE	FOOT	859	0	859



V3 Companies  
7325 Jones Avenue  
Woodridge, IL 60517  
630.724.9200 phone  
630.724.9202 fax  
www.v3co.com

USER NAME = msladek  
DESIGNED -  
DRAWN -  
PLOT SCALE = 2.0000" / 1"  
PLOT DATE = 4/8/2021

CHECKED -  
DATE -

REVISED -  04/08/2021  
REVISED -  
REVISED -  
REVISED -

**STATE OF ILLINOIS  
DEPARTMENT OF TRANSPORTATION**

**SUMMARY OF QUANTITIES**

SCALE: NONE SHEET 4 OF 8 SHEETS STA. TO STA.

F.A.P. RTE. 351/577	SECTION 19-00089-00-LS	COUNTY WILL	TOTAL SHEETS 84	SHEET NO. 6
CONTRACT NO. 61G95			ILLINOIS FED. AID PROJECT	

SPECIALTY ITEM	SPECIAL PROVISION	CODE NO.	ITEM	UNIT	TOTAL QUANTITY	CONSTRUCTION CODE	
						ROADWAY 80% FEDERAL 20% LOCAL 0004	LANDSCAPING 100% CITY OF LOCKPORT 0004
#		81603078	UNIT DUCT, 600V, 3-1C NO.2, 1/C NO.2 GROUND, (XLP-TYPE USE), 1 1/2" DIA. POLYETHYLENE	FOOT	1,810	0	1,810
#		81702400	ELECTRIC CABLE IN CONDUIT, 600V (XLP-TYPE USE) 3-1/C NO. 2	FOOT	660	0	660
#		81702610	ELECTRIC CABLE IN CONDUIT, 600V (XLP-TYPE USE) 5-1/C NO. 2	FOOT	811	0	811
#	*	83600200	LIGHT POLE FOUNDATION, 24" DIAMETER	FOOT	250	0	250
#	*	84200500	REMOVAL OF LIGHTING UNIT, SALVAGE	EACH	25	0	25
#	*	85000200	MAINTENANCE OF EXISTING TRAFFIC SIGNAL INSTALLATION	EACH	1	0	1
#		87301215	ELECTRIC CABLE IN CONDUIT, SIGNAL NO. 14 2C	FOOT	1,046	0	1046
#		87301900	ELECTRIC CABLE IN CONDUIT, EQUIPMENT GROUNDING CONDUCTOR, NO. 6 1C	FOOT	133	0	133
#		87900200	DRILL EXISTING HANDHOLE	EACH	10	0	10
#	*	88600600	DETECTOR LOOP REPLACEMENT	FOOT	832	832	0
#		88800100	PEDESTRIAN PUSH-BUTTON	EACH	8	0	8
#		89500400	RELOCATE EXISTING PEDESTRIAN PUSH-BUTTON	EACH	1	0	1
#		89502200	MODIFY EXISTING CONTROLLER	EACH	1	0	1
#	*	89502210	MODIFY EXISTING CONTROLLER CABINET	EACH	1	0	1
#		A2000090	TREE, ACER X FREEMANII ARMSTRONG (ARMSTRONG FREEMAN MAPLE), 2-1/2" CALIPER, BALLED AND BURLAPPED	EACH	4	0	4
#		A2007170	TREE, QUERCUS WAREI REGAL PRINCE, (REGAL PRINCE OAK), 2-1/2" CALIPER, BALLED AND BURLAPPED	EACH	6	0	6
#		A2008618	TREE, ULMUS MORTON GLOSSY (TRIUMPH ELM), 3" CALIPER, BALLED AND BURLAPPED	EACH	2	0	2
#		A2064012	TREE, QUERCUS ALBA X ROBUR CRIMSCHMIDT (CRIMSON SPIRE OAK), 2-1/2" CALIPER, BALLED AND BURLAPPED	EACH	4	0	4
#	*	K0012990	PERENNIAL PLANTS, ORNAMENTAL TYPE, GALLON POT	UNIT	1.7	0	1.7

△  
△  
△  
△  
△  
△




V3 Companies  
 7325 James Avenue  
 Woodridge, IL 60517  
 630.724.9200 phone  
 630.724.9202 fax  
 www.v3co.com  
 USER NAME = msJadek  
 DESIGNED -  
 DRAWN -  
 CHECKED -  
 DATE -  
 REVISED - 04/08/2021  
 REVISED -  
 REVISED -  
 REVISED -


**STATE OF ILLINOIS**  
**DEPARTMENT OF TRANSPORTATION**

**SUMMARY OF QUANTITIES**  
 SCALE: NONE SHEET 5 OF 8 SHEETS STA. TO STA.

F.A.P. RTE. 351/577	SECTION 19-00089-00-LS	COUNTY WILL	TOTAL SHEETS 84	SHEET NO. 7
CONTRACT NO. 61G95			ILLINOIS FED. AID PROJECT	

SPECIALTY ITEM	SPECIAL PROVISION	CODE NO.	ITEM	UNIT	TOTAL QUANTITY	CONSTRUCTION CODE	
						ROADWAY 80% FEDERAL 20% LOCAL 0004	LANDSCAPING 100% CITY OF LOCKPORT 0004
#	*	K0029634	WEED CONTROL, PRE- EMERGENT GRANULAR HERBICIDE	POUND	3	0	3
#	*	K1005481	SHREDED BARK MULCH, 3"	SQ YD	128	0	128
	*	X0200002	PORTLAND CEMENT CONCRETE BASE COURSE, 4" 	SQ YD	1,480	0	1,480
#	*	X0300635	PLANTER	EACH	9	0	9
#	*	X0326498	GFCI 20 AMP DUPLEX RECEPTACLE	EACH	9	0	9
#	*	X0326981	ENGINEERED SOIL FURNISH AND PLACE (SPECIAL)	CU YD	270	0	270
	*	X0327611	REMOVE AND REINSTALL BRICK PAVER	SQ FT	1,930	0	1,930
	*	X0327680	TRENCH DRAIN	FOOT	33	0	33
	*	X0540000	BRICK PAVERS	SQ FT	11,095	0	11,095
#	*	X1400088	POWER PEDESTALS	EACH	21	0	21
#	*	X1400326	RECTANGULAR RAPID FLASHING BEACON ASSEMBLY (COMPLETE)	EACH	2	0	2
#	*	X1400419	LIGHTING UNIT (INSTALL ONLY)	EACH	25	0	25
	*	X4401198	HOT-MIX ASPHALT SURFACE REMOVAL, VARIABLE DEPTH	SQ YD	6,400	6,400	0
#	*	X5090850	ORNAMENTAL RAILING	FOOT	681	0	681
#	*	X5610704	WATER MAIN REMOVAL, 4"	FOOT	116	0	116
#	*	X6026623	VALVE BOX	EACH	2	0	2
	*	X6030205	FRAME AND LIDS TO BE ADJUSTED (SPECIAL)	EACH	27	27	0
	*	X6060079	COMBINATION CONCRETE CURB AND GUTTER, TYPE M-3.12 (SPECIAL)	FOOT	300	300	0



USER NAME = msjadek	DESIGNED -	REVISED -  04/08/2021
	DRAWN -	REVISED -
PLOT SCALE = 2.0000' / 1"v	CHECKED -	REVISED -
PLOT DATE = 4/8/2021	DATE -	REVISED -

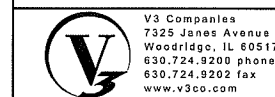
**STATE OF ILLINOIS  
DEPARTMENT OF TRANSPORTATION**

SUMMARY OF QUANTITIES			
SCALE: NONE	SHEET 6 OF 8 SHEETS	STA.	TO STA.

F.A.P. RTE. 351/577	SECTION 19-00089-00-LS	COUNTY WILL	TOTAL SHEETS 84	SHEET NO. 8
CONTRACT NO. 61G95			ILLINOIS FED. AID PROJECT	

SPECIALTY ITEM	SPECIAL PROVISION	CODE NO.	ITEM	UNIT	TOTAL QUANTITY	CONSTRUCTION CODE	
						ROADWAY 80% FEDERAL 20% LOCAL 0004	LANDSCAPING 100% CITY OF LOCKPORT 0004
#	*	X8140115	HANDHOLE TO BE ADJUSTED	EACH	5	5	0
#	*	X8410102	TEMPORARY LIGHTING SYSTEM	LSUM	1	0	1
#	*	X8760055	PEDESTRIAN PUSH-BUTTON POST, TYPE A	EACH	7	0	7
#	*	X8780012	CONCRETE FOUNDATION, TYPE A 12-INCH DIAMETER	FOOT	28	0	28
	*	Z0013798	CONSTRUCTION LAYOUT	LSUM	1	0.5	0.5
#	*	Z0033028	MAINTENANCE OF LIGHTING SYSTEM	CAL MO	6	0	6
#	*	Z0033044	RE-OPTIMIZE TRAFFIC SIGNAL SYSTEM LEVEL 1	EACH	1	0	1
Δ	*	Z0076600	TRAINEES	HOUR	500	0	500
Δ	*	Z0076604	TRAINEES TRAINING PROGRAM GRADUATE	HOUR	500	0	500
	*	XX009445	BENCHES (INSTALL ONLY)	EACH	22	0	22
	*	XX009446	BIKE RACKS (INSTALL ONLY)	EACH	23	0	23
	*	XX009447	BOLLARDS (INSTALL ONLY)	EACH	5	0	5
	*	XX009448	CONCRETE CURB PLANTER	FOOT	681	0	681
#	*	XX009449	SHRUB, BUDDLEIA SMNBDBT (PUGSTER BLUE BUTTERFLY BUSH), CONTAINER GROWN, 2-GALLON	EACH	16	0	16
#	*	XX009450	SHRUB, ROSA RUGOSA 'FRAU DAGMAR HASTRUP', (FRAU DAGMAR HASTRUP RUGOSA ROSE) , CONTAINER GROWN, 5 GALLON	EACH	14	0	14
#	*	XX009451	SHRUB, ROSA RUGOSA 'MEITZAURA' (RASPBERRY RUGOSTAR ROSE), CONTAINER GROWN, 5-GALLON	EACH	16	0	16
#	*	XX009452	SHRUB, SYRINGA SMSJBP7 (BLOOMERANG DARK PURPLE LILAC) , CONTAINER GROWN, 3-GALLON	EACH	20	0	20
#	*	X0327814	PLANTING SOIL MIX FURNISH AND PLACE, 24"	SO YD	156	0	156

Δ 0042



USER NAME = msladek  
DESIGNED -  
DRAWN -  
CHECKED -  
DATE -  
PLOT SCALE = 2,0000' / 1"  
PLOT DATE = 4/8/2021

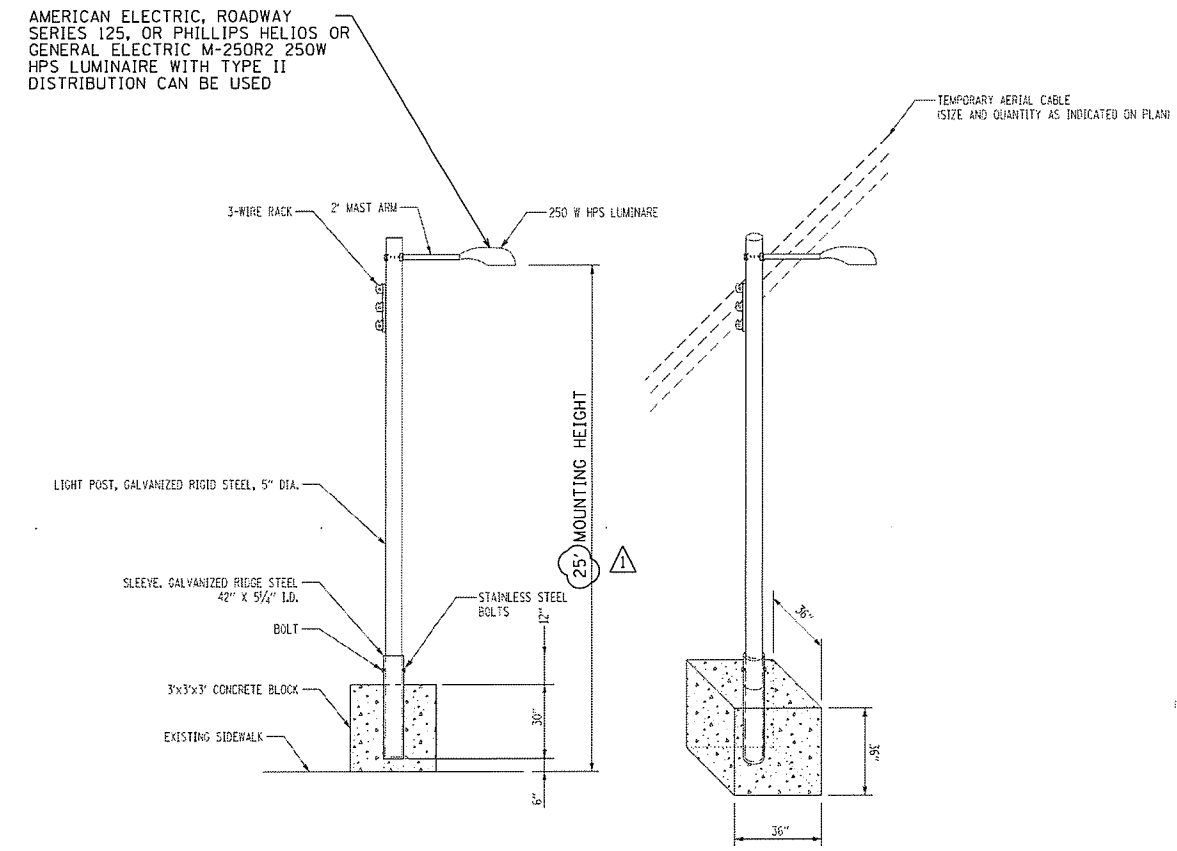
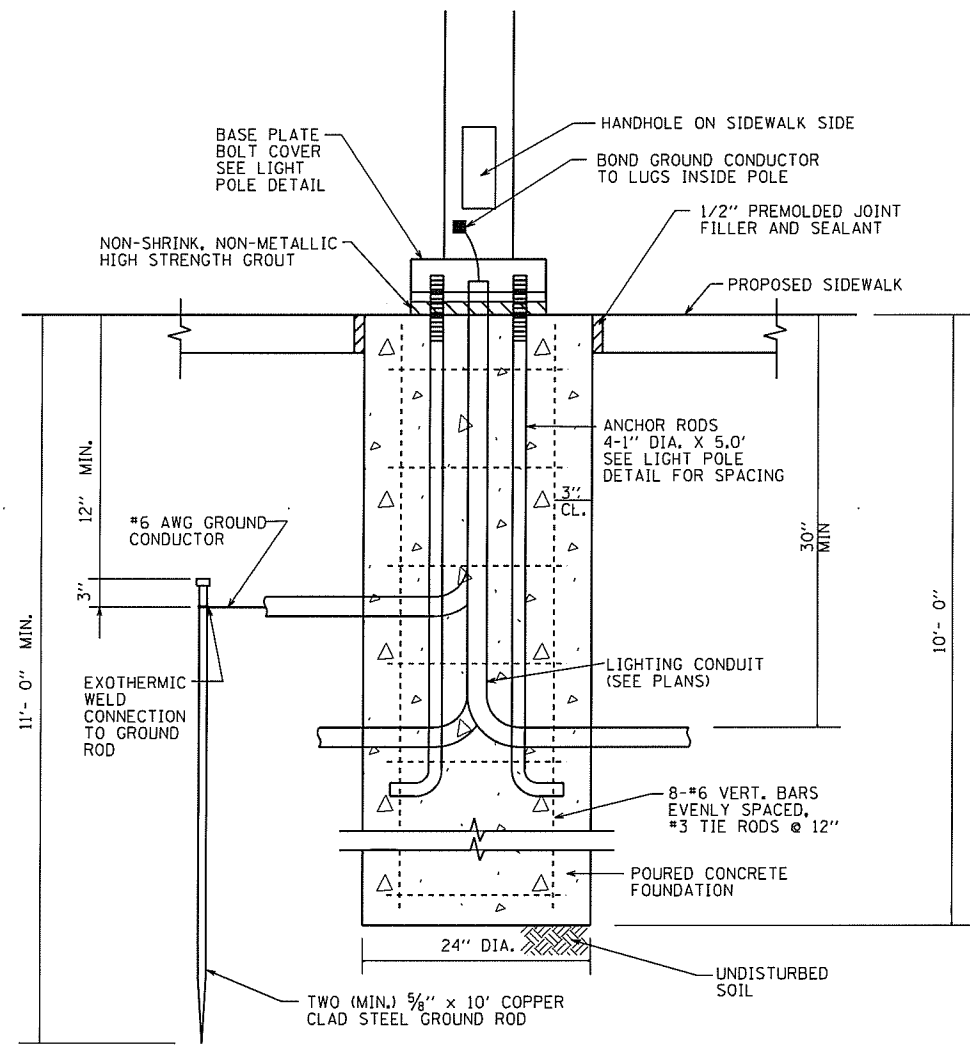
REVISOR - Δ 04/08/2021  
REVISOR -  
REVISOR -  
REVISOR -

STATE OF ILLINOIS  
DEPARTMENT OF TRANSPORTATION

SUMMARY OF QUANTITIES

SCALE: NONE SHEET 7 OF 8 SHEETS STA. TO STA.

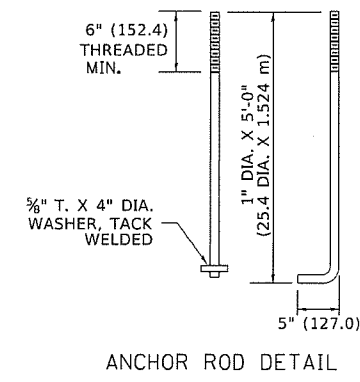
F.A.P. RTE.	SECTION	COUNTY	TOTAL SHEETS	SHEET NO.
351/577	19-00089-00-LS	WILL	84	9
CONTRACT NO. 61695			ILLINOIS FED. AID PROJECT	



TEMPORARY LIGHT POLE DETAIL

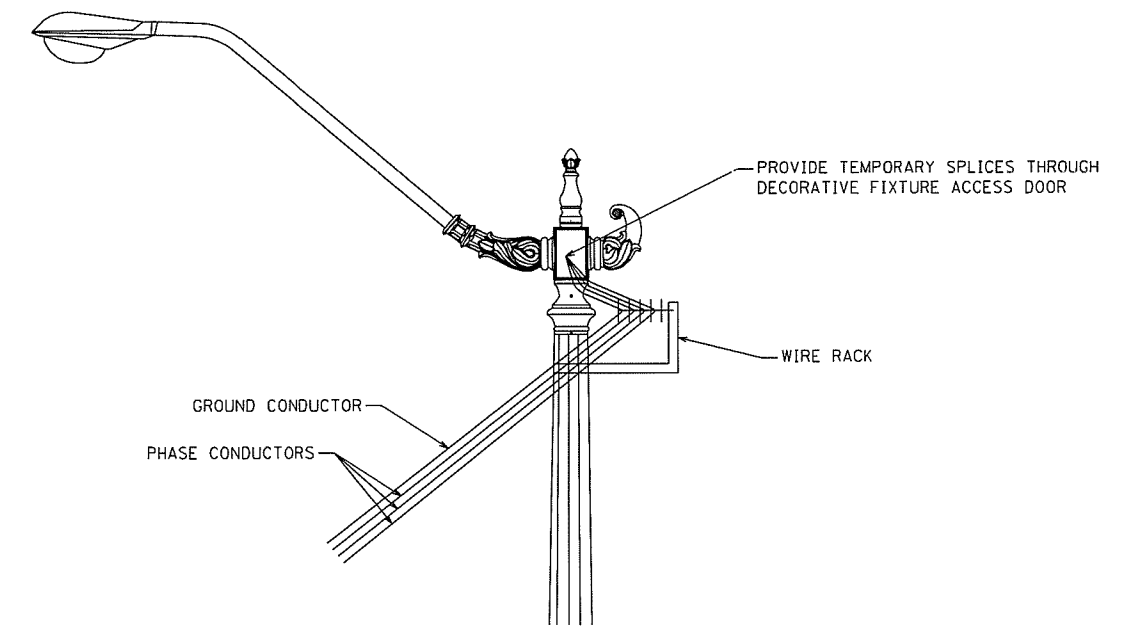
**ORNAMENTAL STREET LIGHT FOUNDATION NOTES:**

1. CONTRACTOR TO VERIFY ALL ELEVATIONS, DIMENSIONS, LOCATIONS AND PRODUCTS PRIOR TO STARTING CONSTRUCTION AND/OR ORDERING MATERIALS.
2. CONCRETE TO BE CLASS SI, AND WORK SHALL BE DONE IN ACCORDANCE WITH SECTION 1020 IN THE STANDARD SPECIFICATIONS.
3. ALL REINFORCEMENT STEEL TO BE ASTM A615, GR-60.
4. ALL FOOTINGS MUST BE POURED ON UNDISTURBED SOIL WITH A MINIMUM SAFE BEARING CAPACITY OF 2000 P.S.F. WITH NO ORGANICS. THE FOUNDATION SHALL NOT BE POURED ON FROZEN GROUND.
5. FOUNDATION DETAIL IS BASED ON MEDIUM CLAY (0u=1.0 TON/50 FT.) SOIL CONDITIONS.
6. THE CONTRACTOR SHALL HAVE THE EXISTING SOIL CONDITIONS FIELD VERIFIED BY A QUALIFIED TESTING AGENCY AND SUBMIT DESIGN CALCULATIONS AND SHOP DRAWINGS IF EXISTING SOIL CONDITIONS ARE OUTSIDE THE PARAMETERS ASSUMED FOR THE TYPICAL FOUNDATION DESIGN.
7. ANCHOR RODS SHALL BE THREADED A MINIMUM OF 6 INCHES WITH A MINIMUM OF 3 INCHES OF THREADED ANCHOR ROD EMBEDDED IN THE FOUNDATION.
8. ANCHOR RODS SHALL PROJECT 2 3/4" ABOVE THE TOP OF THE FOUNDATION.

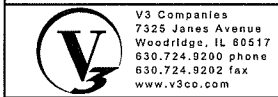


ANCHOR ROD DETAIL

ORNAMENTAL LIGHT POLE FOUNDATION



TEMPORARY POWER FEED TO/FROM EXISTING ORNAMENTAL LIGHT POLE



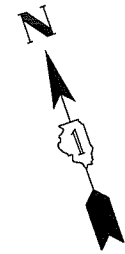
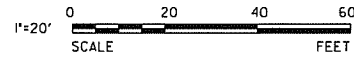
V3 Companies  
7325 James Avenue  
Woodridge, IL 60517  
630.724.9200 phone  
630.724.9202 fax  
www.v3co.com

USER NAME = msledak	DESIGNED -	REVISED -	04/08/2021
PLOT SCALE = 2.0000' / in.	DRAWN -	REVISED -	
PLOT DATE = 4/8/2021	CHECKED -	REVISED -	
	DATE -	REVISED -	

STATE OF ILLINOIS  
DEPARTMENT OF TRANSPORTATION

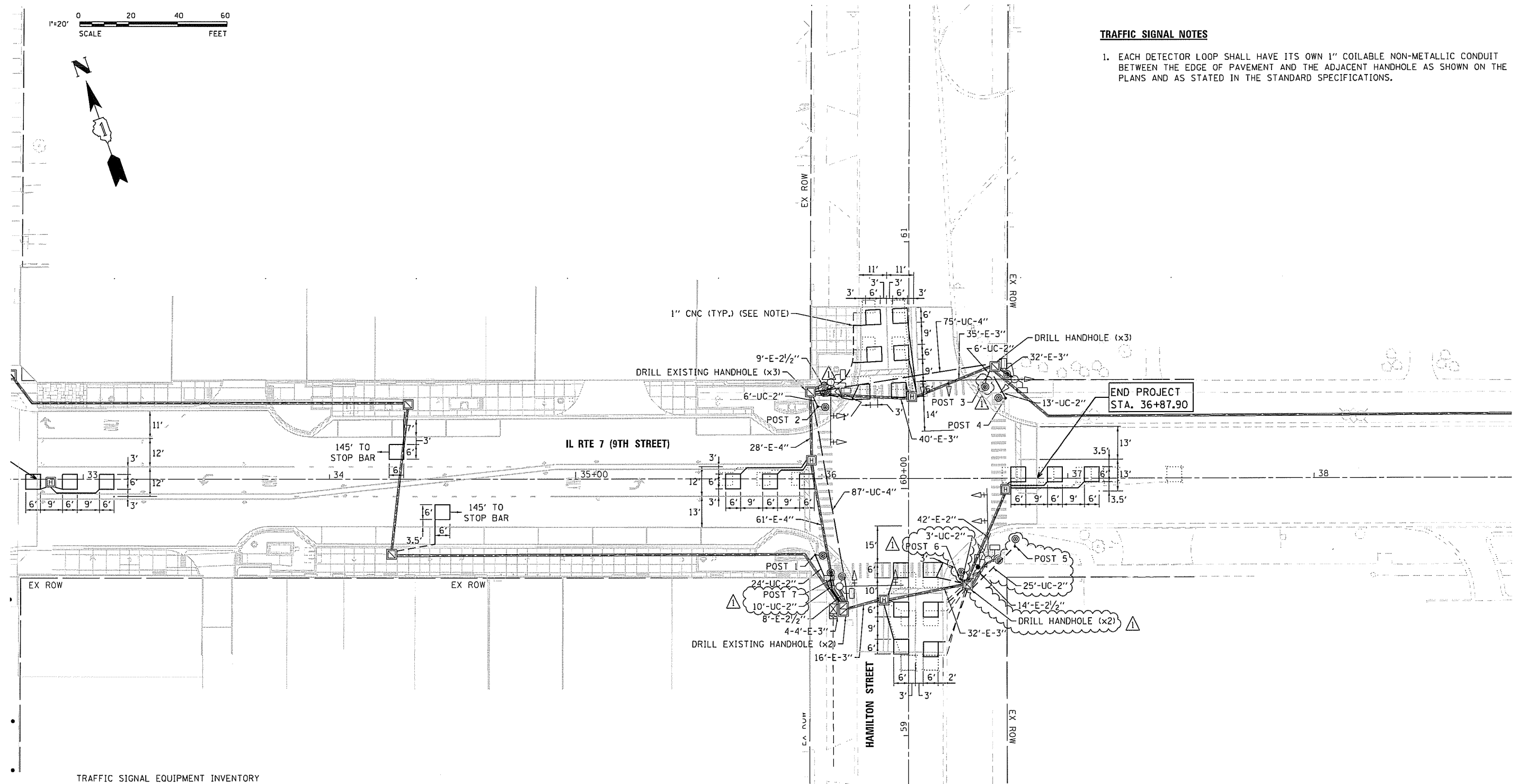
LIGHTING AND ELECTRICAL DETAILS	
SCALE: NTS	SHEET 6 OF 8 SHEETS STA. TO STA.

F.A.P. RTE. 351/577	SECTION 19-00089-00-LS	COUNTY WILL	TOTAL SHEETS 84	SHEET NO. 45
CONTRACT NO. 61G95				
ILLINOIS FED. AID PROJECT				



**TRAFFIC SIGNAL NOTES**

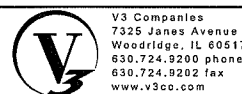
1. EACH DETECTOR LOOP SHALL HAVE ITS OWN 1" COILABLE NON-METALLIC CONDUIT BETWEEN THE EDGE OF PAVEMENT AND THE ADJACENT HANDHOLE AS SHOWN ON THE PLANS AND AS STATED IN THE STANDARD SPECIFICATIONS.



TRAFFIC SIGNAL EQUIPMENT INVENTORY

ITEM	APPROX. STATION	APPROX. OFFSET	FOUNDATION TYPE	EQUIPMENT
POST 1	35+97.32	30.84 RT	TYPE A, 12" - 4' DEPTH	PED. PUSH BUTTON POST
POST 2	35+98.32	29.27 LT	TYPE A, 12" - 4' DEPTH	PED. PUSH BUTTON POST
POST 3	36+66.53	40.16 LT	TYPE A, 12" - 4' DEPTH	PED. PUSH BUTTON POST
POST 4	36+74.61	32.58 LT	TYPE A, 12" - 4' DEPTH	PED. PUSH BUTTON POST
POST 5	36+78.40	27.54 RT	TYPE A, 12" - 4' DEPTH	PED. PUSH BUTTON POST
POST 6	36+56.46	40.82 RT	TYPE A, 12" - 4' DEPTH	PED. PUSH BUTTON POST
POST 7	36+03.49	41.09 RT	TYPE A, 12" - 4' DEPTH	PED. PUSH BUTTON POST

LOCKPORT TS#7523



V3 Companies 7325 Janes Avenue Woodridge, IL 60517 630.724.9200 phone 630.724.9202 fax www.v3co.com	USER NAME = msjdek	DESIGNED -	REVISED - $\Delta$ 04/08/2021
	PLOT SCALE = 40,0000' / 1" =	DRAWN -	REVISED -
	PLOT DATE = 4/8/2021	CHECKED -	REVISED -
		DATE -	REVISED -

STATE OF ILLINOIS  
DEPARTMENT OF TRANSPORTATION

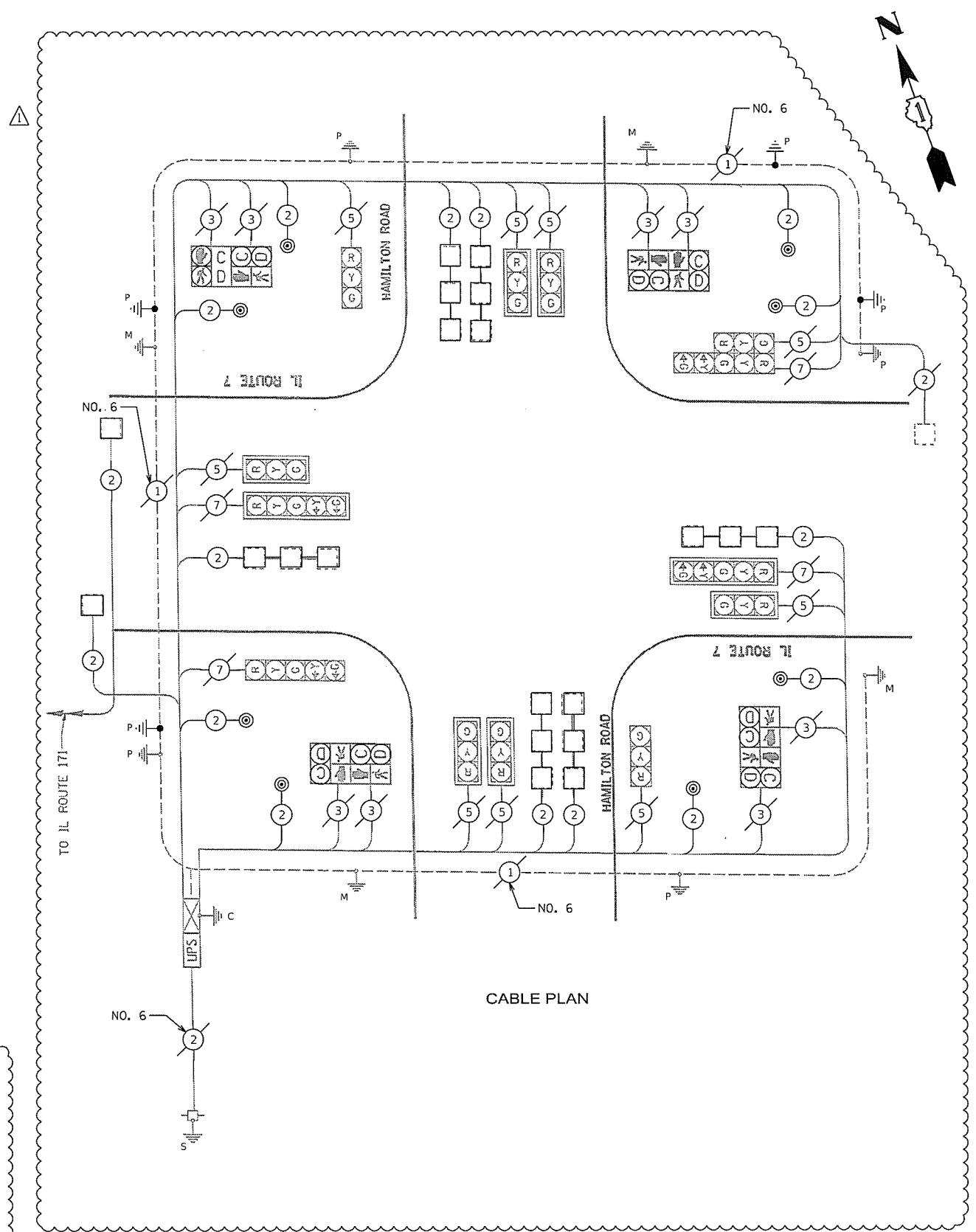
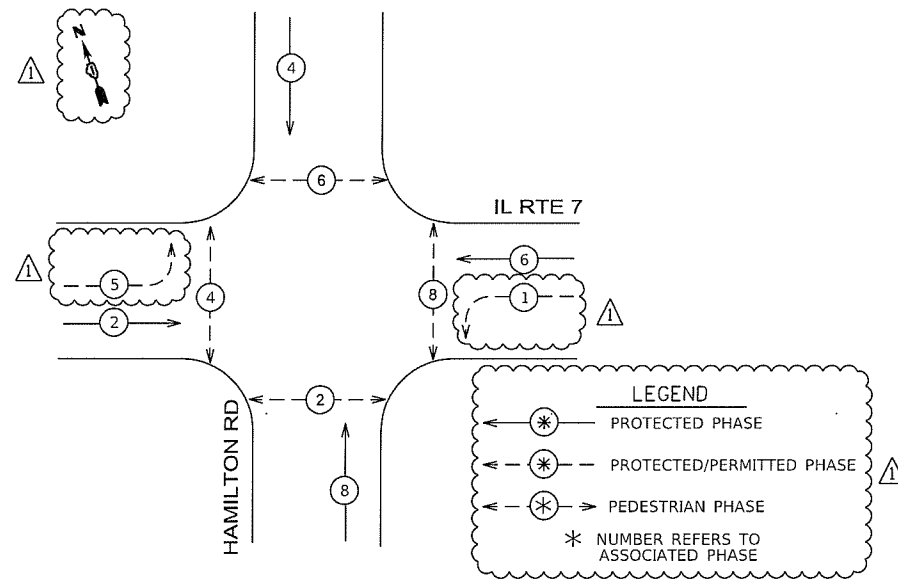
W. 9TH STREET DETECTOR LOOP PLAN &  
TRAFFIC SIGNAL MODERNIZATION PLAN  
IL. RTE. 7 (9TH STREET) AND HAMILTON STREET

SCALE: 1" = 20' SHEET 2 OF 3 SHEETS STA. 32+81.23 TO STA. 36+94.11

F.A.P. RTE. 351/577	SECTION 19-00089-00-LS	COUNTY WILL	TOTAL SHEETS 84	SHEET NO. 49
CONTRACT NO. 61G95				ILLINOIS FED. AID PROJECT



EXISTING CONTROLLER SEQUENCE



CABLE PLAN

TRAFFIC SIGNAL INSTALLATION ELECTRICAL SERVICE REQUIREMENTS

TYPE	NO. LAMPS	WATTAGE INCAND.	WATTAGE LED	% OPERATION	TOTAL WATTAGE
SIGNAL RED	13		17	0.50	110.5
SIGNAL YELLOW	13		25	0.25	81.2
SIGNAL GREEN	13		15	0.25	48.7
PERMISSIVE ARROW	8		12	0.10	9.6
PED. SIGNAL	8		25	1.00	200.0
CONTROLLER	1		100	1.00	100.0
ILLUM. SIGN	-		25	0.05	
VIDEO SYSTEM	-		150	1.00	
TOTAL =					550.0

ENERGY COSTS TO:

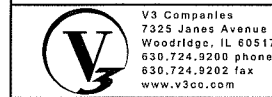
CITY OF LOCKPORT  
222 EAST 9TH STREET  
LOCKPORT, IL 60441

ENERGY SUPPLY CONTACT: \_\_\_\_\_  
PHONE: \_\_\_\_\_  
COMPANY: COMED  
ACCOUNT NUMBER: \_\_\_\_\_

SCHEDULE OF QUANTITIES

Description	Unit	Total QTY
UNDERGROUND CONDUIT, GALVANIZED STEEL, 2" DIA.	FOOT	87
UNDERGROUND CONDUIT, GALVANIZED STEEL, 4" DIA.	FOOT	162
MAINTENANCE OF EXISTING TRAFFIC SIGNAL INSTALLATION	EACH	1
ELECTRIC CABLE IN CONDUIT, SIGNAL NO. 14 2C	FOOT	1,046
ELECTRIC CABLE IN CONDUIT, EQUIPMENT GROUNDING CONDUCTOR, NO. 6 1C	FOOT	133
DRILL EXISTING HANDHOLE	EACH	10
DETECTOR LOOP REPLACEMENT	FOOT	832
PEDESTRIAN PUSH-BUTTON	EACH	8
MODIFY EXISTING CONTROLLER	EACH	1
MODIFY EXISTING CONTROLLER CABINET	EACH	1
PEDESTRIAN PUSH-BUTTON POST, TYPE A	EACH	7
CONCRETE FOUNDATION, TYPE A 12-INCH DIAMETER	FOOT	28
RE-OPTIMIZE TRAFFIC SIGNAL SYSTEM LEVEL 1	EACH	1

LOCKPORT TS#7523



USER NAME = mjadek	DESIGNED -	REVISED - 04/08/2021
	DRAWN -	REVISED -
PLDT SCALE = 40.0000' / in.	CHECKED -	REVISED -
PLDT DATE = 4/8/2021	DATE -	REVISED -

STATE OF ILLINOIS  
DEPARTMENT OF TRANSPORTATION

IL ROUTE 7 (9TH STREET) AT HAMILTON STREET  
CABLE PLAN

SCALE: NTS SHEET 3 OF 3 SHEETS STA. TO STA.

F.A.P. RTE. 351/577	SECTION 19-00089-00-LS	COUNTY WILL	TOTAL SHEETS 84	SHEET NO. 50
CONTRACT NO. 61G95			ILLINOIS FED. AID PROJECT	