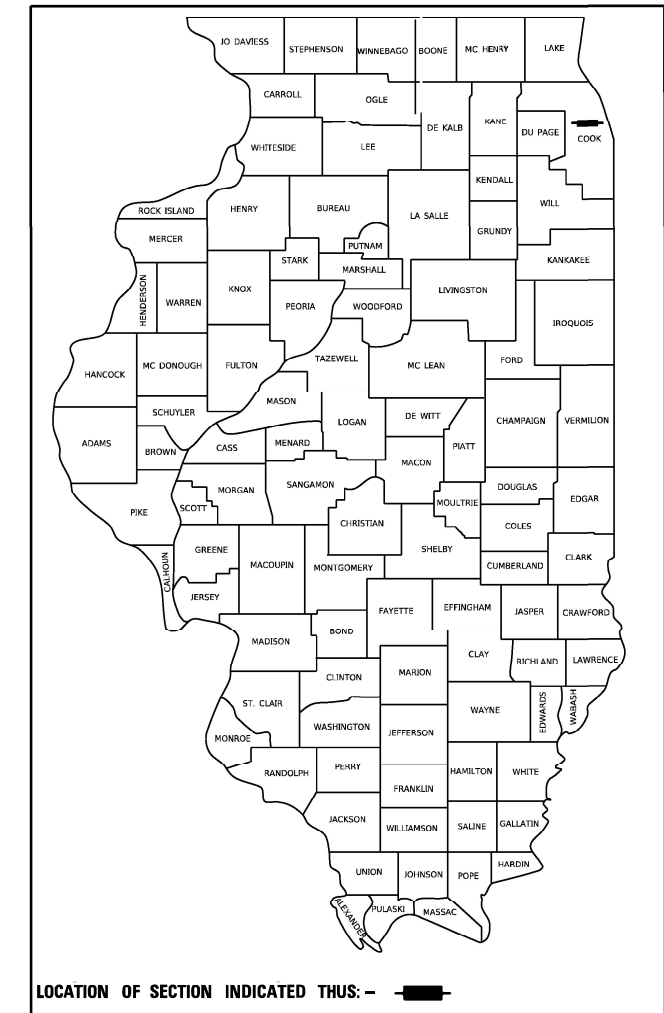


STATE OF ILLINOIS
DEPARTMENT OF TRANSPORTATION

F.A.U. RTE.	SECTION	COUNTY	TOTAL SHEETS	SHEET NO.
3520	2020-135-RS&SW	COOK	23	1
		ILLINOIS	CONTRACT NO. 62M13	

D-91-535-20



LOCATION OF SECTION INDICATED THUS: - [black rectangle] -

FOR INDEX OF SHEETS, SEE SHEET NO. 2

THE IMPROVEMENT IS LOCATED IN THE VILLAGES OF MORTON GROVE AND SKOKIE

TRAFFIC DATA: GROSS POINT RD
2018
STA 11+21.60 TO STA 42+80.77
ADT = 7900

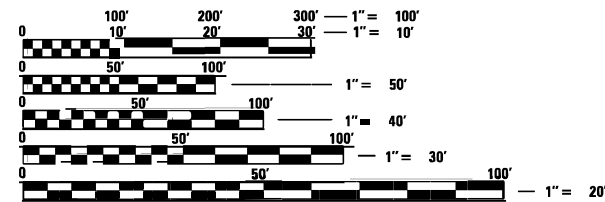
STA 11+21.60 TO STA 42+80.77
POSTED SPEED LIMIT = 35 MPH

PROPOSED
HIGHWAY PLANS

F.A.U. ROUTE 3520; GROSS POINT RD
N OF OAKTON ST TO HOWARD ST
SECTION 2020-135-RS&SW
SMART OVERLAY, ADA IMPROVEMENTS
PROJECT STP-W2GK(537)
COOK COUNTY

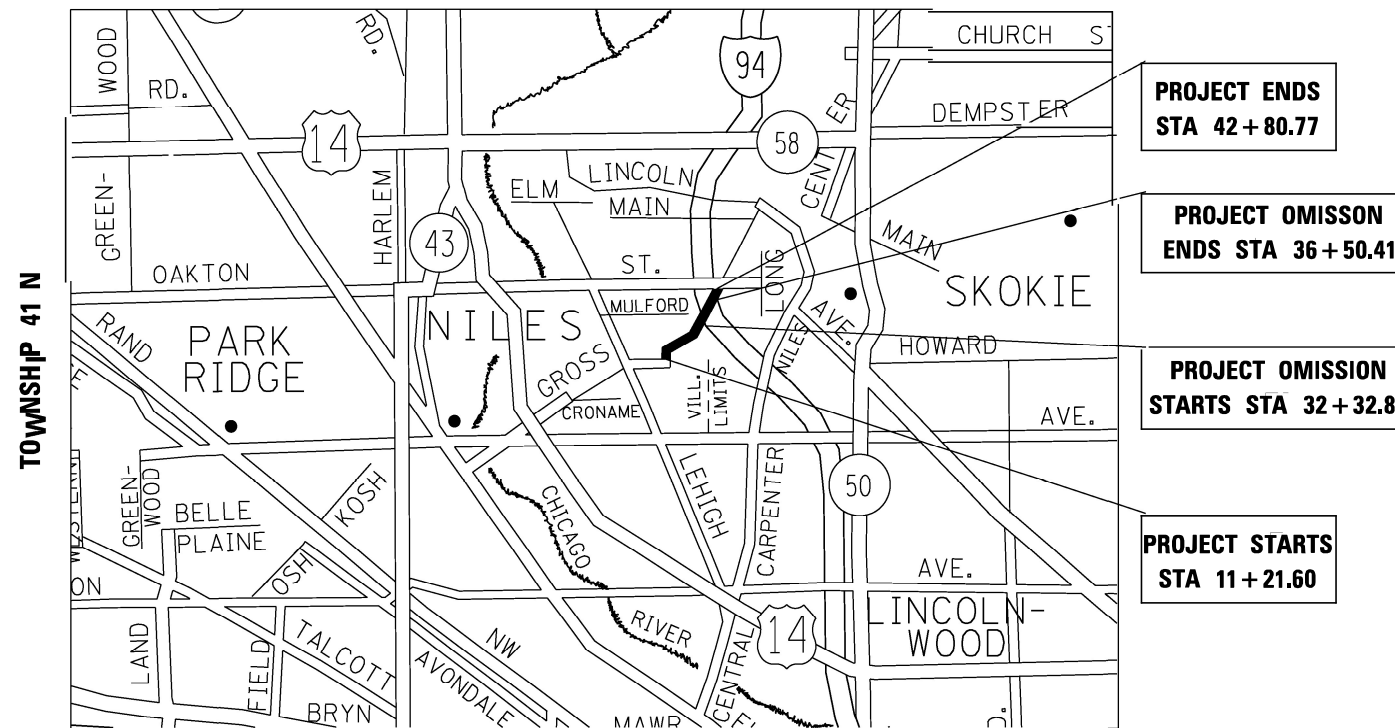
C-91-333-20

RANGE 13 E



FULL SIZE PLANS HAVE BEEN PREPARED USING STANDARD ENGINEERING SCALES. REDUCED SIZED PLANS WILL NOT CONFORM TO STANDARD SCALES. IN MAKING MEASUREMENTS ON REDUCED PLANS, THE ABOVE SCALES MAY BE USED.

J.U.L.E.
JOINT UTILITY LOCATION INFORMATION FOR EXCAVATORS
1-800-892-0123
OR 811



PROJECT ENDS
STA 42+80.77

PROJECT OMISSION
ENDS STA 36+50.41

PROJECT OMISSION
STARTS STA 32+32.83

PROJECT STARTS
STA 11+21.60

PROJECT ENGINEER: VESELIN VELICHKOV (847) 705-4432
PROJECT MANAGER: FAWAD AQUEEL (847) 705-4247

GROSS LENGTH = 3,159.2 FT. = 0.60 MILE
NET LENGTH = 2,741.6 FT. = 0.52 MILE

CONTRACT NO. 62M13

STATE OF ILLINOIS
DEPARTMENT OF TRANSPORTATION

SUBMITTED February 9, 2021
Qasim Raza REGIONAL ENGINEER

March 19, 2021
[Signature]
ENGINEER OF DESIGN AND ENVIRONMENT

March 19, 2021
[Signature]
DIRECTOR OF HIGHWAYS PROJECT IMPLEMENTATION

PRINTED BY THE AUTHORITY
OF THE STATE OF ILLINOIS

SUMMARY OF QUANTITIES			CONSTRUCTION TYPE CODE						
CODE NO	ITEM	UNIT	TOTAL QUANTITIES URBAN	80% FED 20% STATE 0005	100% STATE 0005				
20200100	EARTH EXCAVATION	CU YD	12	12					
21101615	TOPSOIL FURNISH AND PLACE, 4"	SO YD	100	100					
25200110	SODDING, SALT TOLERANT	SO YD	100	100					
25200200	SUPPLEMENTAL WATERING	UNIT	1	1					
35501316	HOT-MIX ASPHALT BASE COURSE, 8"	SO YD	88	88					
40600290	BITUMINOUS MATERIALS (TACK COAT)	POUND	8265	8265					
40600400	MIXTURE FOR CRACKS, JOINTS, AND FLANGEWAYS	TON	28	28					
40600982	HOT-MIX ASPHALT SURFACE REMOVAL - BUTT JOINT	SO YD	214	214					
40604060	HOT-MIX ASPHALT SURFACE COURSE, IL-9.5, MIX "D", N50	TON	15	15					
40604172	POLYMERIZED HOT-MIX ASPHALT SURFACE COURSE, IL-9.5, MIX "E", N70	TON	1779	1779					
42001300	PROTECTIVE COAT	SO YD	288	288					
42400200	PORTLAND CEMENT CONCRETE SIDEWALK 5 INCH	SO FT	500	500					
42400800	DETECTABLE WARNINGS	SO FT	150	150					
44000156	HOT-MIX ASPHALT SURFACE REMOVAL, 1 3/4"	SO YD	18152	18152					

SUMMARY OF QUANTITIES			CONSTRUCTION TYPE CODE						
CODE NO	ITEM	UNIT	TOTAL QUANTITIES URBAN	80% FED 20% STATE 0005	100% STATE 0005				
44000600	SIDEWALK REMOVAL	SO FT	500	500					
44201815	CLASS D PATCHES, TYPE II, 14 INCH	SO YD	13	13					
44201819	CLASS D PATCHES, TYPE III, 14 INCH	SO YD	434	434					
44201821	CLASS D PATCHES, TYPE IV, 14 INCH	SO YD	60	60					
60252800	CATCH BASINS TO BE RECONSTRUCTED	EACH	1	1					
60257900	MANHOLES TO BE RECONSTRUCTED	EACH	1	1					
60406000	FRAMES AND LIDS, TYPE 1, OPEN LID	EACH	5	5					
60406100	FRAMES AND LIDS, TYPE 1, CLOSED LID	EACH	5	5					
60618300	CONCRETE MEDIAN SURFACE, 4 INCH	SO FT	360	360					
* 66900200	NON-SPECIAL WASTE DISPOSAL	CU YD	12	12					
* 66900530	SOIL DISPOSAL ANALYSIS	EACH	1	1					
* 66901001	REGULATED SUBSTANCES PRE-CONSTRUCTION PLAN	LSUM	1	1					
* 66901003	REGULATED SUBSTANCES FINAL CONSTRUCTION	L SUM	1	1					
* 66901006	REGULATED SUBSTANCES MONITORING	CAL DA	3	3					
67000400	ENGINEER'S FIELD OFFICE, TYPE A	CAL MO	12	12					
67100100	MOBILIZATION	L SUM	1	1					

REV-SEP

* = SPECIALTY ITEMS
 △ = NON-PARTICIPATING WORK (100% STATE)

SUMMARY OF QUANTITIES			TOTAL QUANTITIES URBAN	CONSTRUCTION TYPE CODE					*	SUMMARY OF QUANTITIES			TOTAL QUANTITIES URBAN	CONSTRUCTION TYPE CODE					REV-SEP
CODE NO	ITEM	UNIT		80% FED 20% STATE 0005	100% STATE 0005						CODE NO	ITEM		UNIT	80% FED 20% STATE 0005	100% STATE 0005			
70102625	TRAFFIC CONTROL AND PROTECTION, STANDARD	L SUM	1	1					*	78000100	THERMOPLASTIC PAVEMENT MARKING - LETTERS AND SYMBOLS	SO FT	109	109					
	701606																		
70102620	TRAFFIC CONTROL AND PROTECTION, STANDARD 701501	L SUM	1	1															
70102634	TRAFFIC CONTROL AND PROTECTION, STANDARD	L SUM	1	1					*	78000200	THERMOPLASTIC PAVEMENT MARKING - LINE 4"	FOOT	7158	7158					
	701611								*	78000400	THERMOPLASTIC PAVEMENT MARKING - LINE 6"	FOOT	407	407					
70102635	TRAFFIC CONTROL AND PROTECTION, STANDARD	L SUM	1	1					*	78000500	THERMOPLASTIC PAVEMENT MARKING - LINE 8"	FOOT	59	59					
	701701								*	78000600	THERMOPLASTIC PAVEMENT MARKING - LINE 12"	FOOT	592	592					
70102640	TRAFFIC CONTROL AND PROTECTION, STANDARD	L SUM	1	1					*	78000650	THERMOPLASTIC PAVEMENT MARKING - LINE 24"	FOOT	222	222					
	701801								*	78009004	MODIFIED URETHANE PAVEMENT MARKING - LINE 4"	FOOT	636	636					
70300100	SHORT TERM PAVEMENT MARKING	FOOT	7530	7530					*	78009006	MODIFIED URETHANE PAVEMENT MARKING - LINE 6"	FOOT	159	159					
70300150	SHORT TERM PAVEMENT MARKING REMOVAL	SO FT	2510	2510					*	78100100	RAISED REFLECTIVE PAVEMENT MARKER	EACH	158	158					
70300210	TEMPORARY PAVEMENT MARKING LETTERS AND SYMBOLS	SO FT	109	109						78300200	RAISED REFLECTIVE PAVEMENT MARKER REMOVAL	EACH	79	79					
70300220	TEMPORARY PAVEMENT MARKING - LINE 4"	FOOT	7158	7158					*	88600600	DETECTOR LOOP REPLACEMENT	FOOT	630	630					
70300240	TEMPORARY PAVEMENT MARKING - LINE 6"	FOOT	407	407						89500400	RELOCATE EXISTING PEDESTRIAN PUSH-BUTTON	EACH	4	4					
70300250	TEMPORARY PAVEMENT MARKING - LINE 8"	FOOT	59	59					*	X0320050	CONSTRUCTION LAYOUT (SPECIAL)	L SUM	1	1					
70300260	TEMPORARY PAVEMENT MARKING - LINE 12"	FOOT	592	592					*	X4400501	COMBINATION CURB AND GUTTER REMOVAL AND REPLACEMENT LESS THAN OR TO 10 FEET	FOOT	2000	2000					
70300280	TEMPORARY PAVEMENT MARKING - LINE 24"	FOOT	222	222															
70300520	PAVEMENT MARKING TAPE, TYPE III 4"	FOOT	2510	2510															

* = SPECIALTY ITEMS
 △ = NON-PARTICIPATING WORK (100% STATE)

FILE NAME =	USER NAME = khans	DESIGNED -	REVISED -
pw:\planroom\dtd\illinois\gov\FWIDOT\Documents\VDOT\Offices\District\Projects\DI53520\CADD\Info\Design\DI53520-4\DRAWN		REVISIONS -	REVISED -
		CHECKED -	REVISED -
		DATE -	REVISED -

**STATE OF ILLINOIS
DEPARTMENT OF TRANSPORTATION**

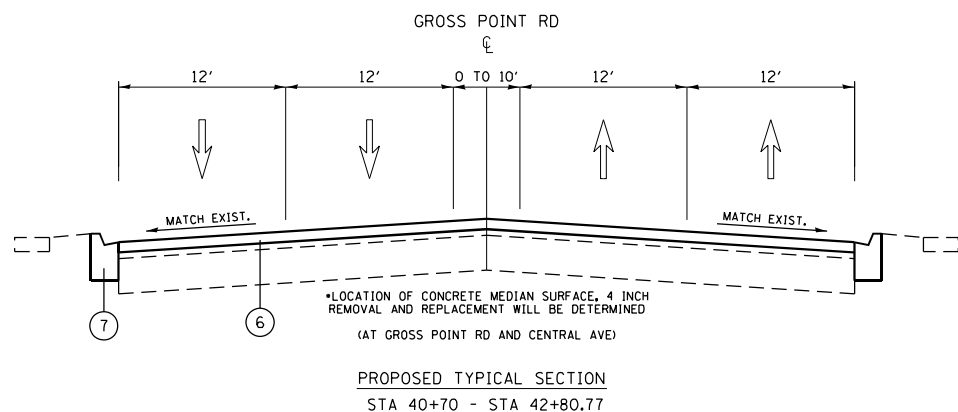
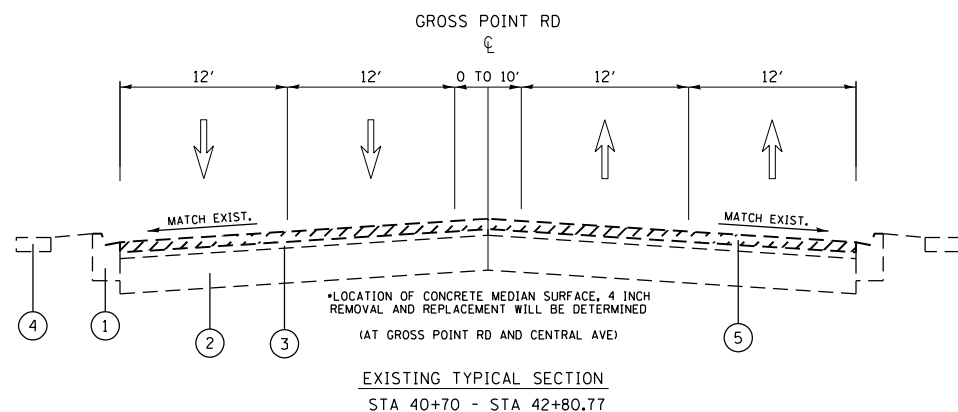
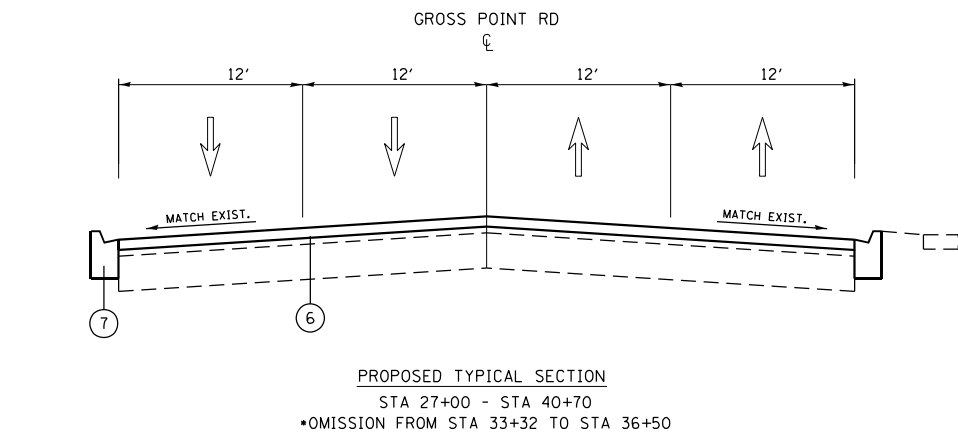
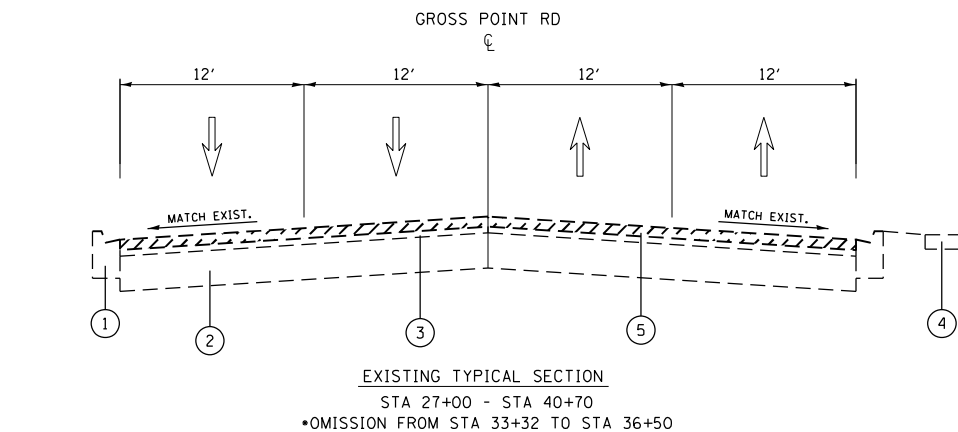
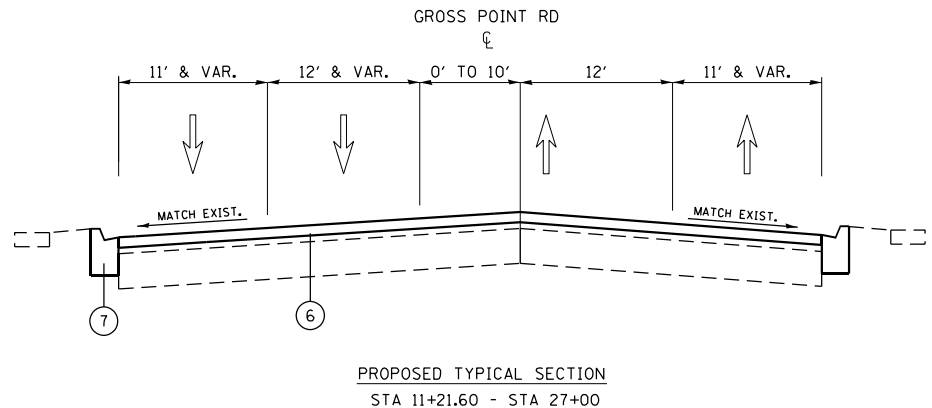
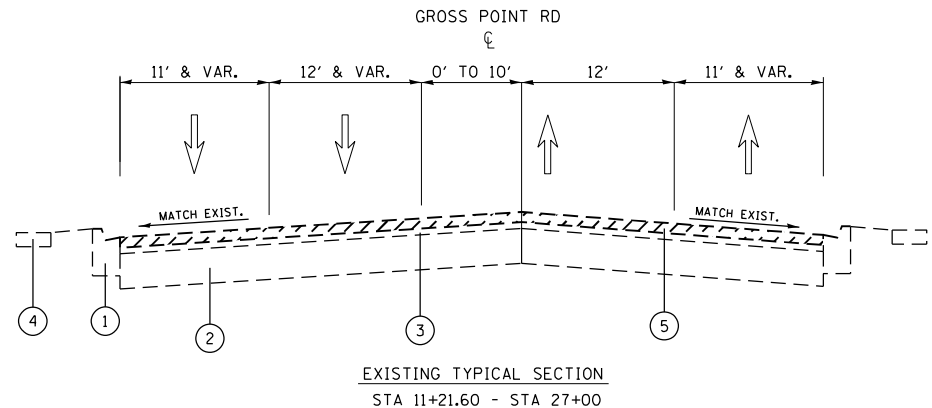
**GROSS POINT RD. (N OF OAKTON ST. - HOWARD ST.)
SUMMARY OF QUANTITIES**

SCALE: SHEET NO. OF SHEETS STA. TO STA.

F.A.U. RTE.	SECTION	COUNTY	TOTAL SHEETS	SHEET NO.
3520	2020-135-RS&SW	COOK	23	4
CONTRACT NO. 62M13				
FED. ROAD DIST. NO. 1 (ILLINOIS) FED. AID PROJECT				

LEGEND

- 1. EXISTING COMBINATION CONCRETE CURB AND GUTTER
- 2. EXISTING PCC BASE COURSE, 10"(+)
- 3. EXISTING HMA 1 1/2" +/-
- 4. EXISTING SIDEWALK, 5"
- 5. PROPOSED HMA SURFACE REMOVAL, 1 3/4"
- 6. PROPOSED POLY HOT-MIX ASPHALT SURFACE COURSE, IL-9.5, MIX E, N70; 1 3/4"
- 7. PROPOSED COMBINATION CURB AND GUTTER



HOT-MIX ASPHALT MIXTURE REQUIREMENTS		QUALITY MANAGEMENT PROGRAM (QMP)
MIXTURE TYPE	AIR VOIDS(%) @ Ndes	
PAVEMENT		
POLY HMA SURFACE COURSE, IL-9.5, MIX E, N70; 1 3/4"	4.0% @ 70 GYR.	OCP
PATCHING		
CLASS D PATCHES (HMA BINDER IL-19 MM)	4% @ 70 GYR.	OC/OA
DRIVEWAYS		
HMA SURFACE COURSE, MIX D, IL-9.5, N50	4% @ 50 GYR.	OC/OA
HMA ASPHALT BASE COURSE, 8" (HMA BINDER - IL-19.0)	4% @ 50 GYR.	OC/OA
QMP DESIGNATION: QUALITY CONTROL/QUALITY ASSURANCE (OC/OA); QUALITY CONTROL FOR PERFORMANCE (OCP); PAY FOR PERFORMANCE (PFP)		

NOTE

- NOTE 1: THE UNIT WEIGHT USED TO CALCULATE ALL HOT-MIX ASPHALT SURFACE MIXTURE QUANTITIES IS 112 LBS/SQ YD/IN.
- NOTE 2: THE "AC TYPE" FOR POLYMERIZED HMA MIXES SHALL BE "SBS/SBR PG 76 -22" AND FOR NON-POLYMERIZED HMA THE "AC TYPE" SHALL BE "PG 64 -22" UNLESS MODIFIED BY SPECIAL PROVISIONS.
- NOTE 3: "QUALITY MANAGEMENT PROGRAM (QMP) IDENTIFIES THE PARTICULAR QUALITY CONTROL SPECIFICATION THAT APPLIES TO THE HMA MIXTURE"
- NOTE 4: THE CONTRACTOR SHALL MILL BEFORE PATCHING
- NOTE 5: THE LONGITUDINAL JOINT SEALANT SHALL BE PLACED OVER THE MILLED SURFACE

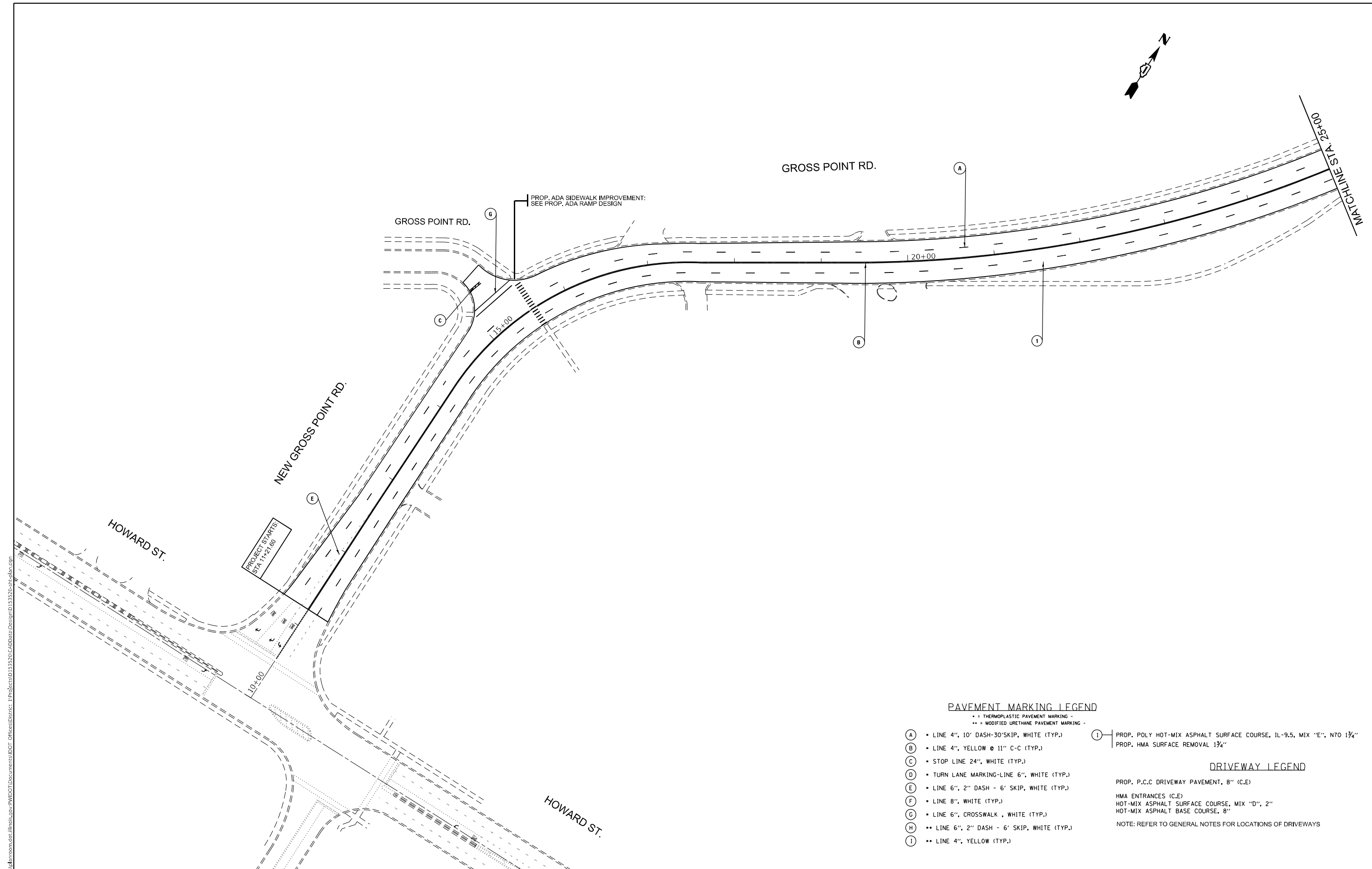
MODEL: Default
 FILE NAME: p:\data\m3000m.dwg
 PROJECT: 153520\CD\Drawings\DOT - Office\Drawings - 153520\153520-sh-ty-typical.dwg

USER NAME = khans	DESIGNED -	REVISED -
PLOT SCALE = 100,0002' / in.	DRAWN -	REVISED -
PLOT DATE = 3/4/2021	CHECKED -	REVISED -
	DATE -	REVISED -

**STATE OF ILLINOIS
DEPARTMENT OF TRANSPORTATION**

TYPICAL SECTION	
GROSS POINT RD. (NO OKATON ST. - HOWARD ST.)	
SCALE:	SHEET OF SHEETS STA. TO STA.

F.A.U. RTE.	SECTION	COUNTY	TOTAL SHEETS	SHEET NO.
3520	2020-135-R5&SW	COOK	23	6
CONTRACT NO. 62M13				
ILLINOIS FED. AID PROJECT				



PAVEMENT MARKING LEGEND

- = THERMOPLASTIC PAVEMENT MARKING -
- - = MODIFIED URETHANE PAVEMENT MARKING -
- (A) • LINE 4", 10' DASH-30'SKIP, WHITE (TYP.)
- (B) • LINE 4", YELLOW @ 11" C-C (TYP.)
- (C) • STOP LINE 24", WHITE (TYP.)
- (D) • TURN LANE MARKING-LINE 6", WHITE (TYP.)
- (E) • LINE 6", 2" DASH - 6' SKIP, WHITE (TYP.)
- (F) • LINE 8", WHITE (TYP.)
- (G) • LINE 6", CROSSWALK , WHITE (TYP.)
- (H) •• LINE 6", 2" DASH - 6' SKIP, WHITE (TYP.)
- (I) •• LINE 4", YELLOW (TYP.)

- (1) PROP. POLY HOT-MIX ASPHALT SURFACE COURSE, IL-9.5, MIX "E", N70 1 3/4"
- PROP. HMA SURFACE REMOVAL 1 3/4"

DRIVEWAY LEGEND

- PROP. P.C.C DRIVEWAY PAVEMENT, 8" (C,E)
- HMA ENTRANCES (C,E)
- HOT-MIX ASPHALT SURFACE COURSE, MIX "D", 2"
- HOT-MIX ASPHALT BASE COURSE, 8"
- NOTE: REFER TO GENERAL NOTES FOR LOCATIONS OF DRIVEWAYS

MODEL: Default
 FILE NAME: p:\pub\harronm.dwt\illinois.gov\PWIDOT\Documents\DOT Office\Drawings\1\Projects\153520\CADDData\Design\153520-eha-lb-09p

USER NAME = khans	DESIGNED -	REVISED -
DRAWN -	REVISOR -	REVISION -
PLOT SCALE = 100,0000' / in.	CHECKED -	REVISOR -
PLOT DATE = 3/4/2021	DATE -	REVISION -

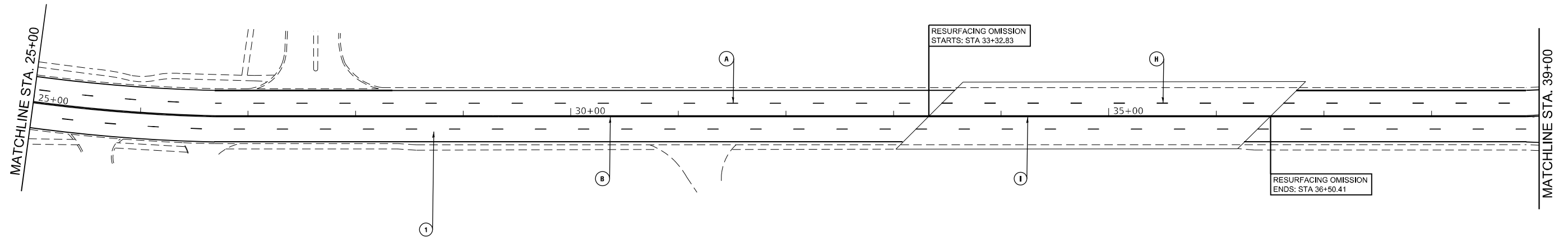
**STATE OF ILLINOIS
DEPARTMENT OF TRANSPORTATION**

**ROADWAY & PAVEMENT MARKING PLAN
GROSS POINT RD. (N OF OAKTON ST. - HOWARD ST.)**

SCALE: 1"=50' SHEET OF SHEETS STA. TO STA.

F.A.U. RTE.	SECTION	COUNTY	TOTAL SHEETS	SHEET NO.
3520	2020-135-R5&SW	COOK	23	7
CONTRACT NO. 62M13				
ILLINOIS FED. AID PROJECT				

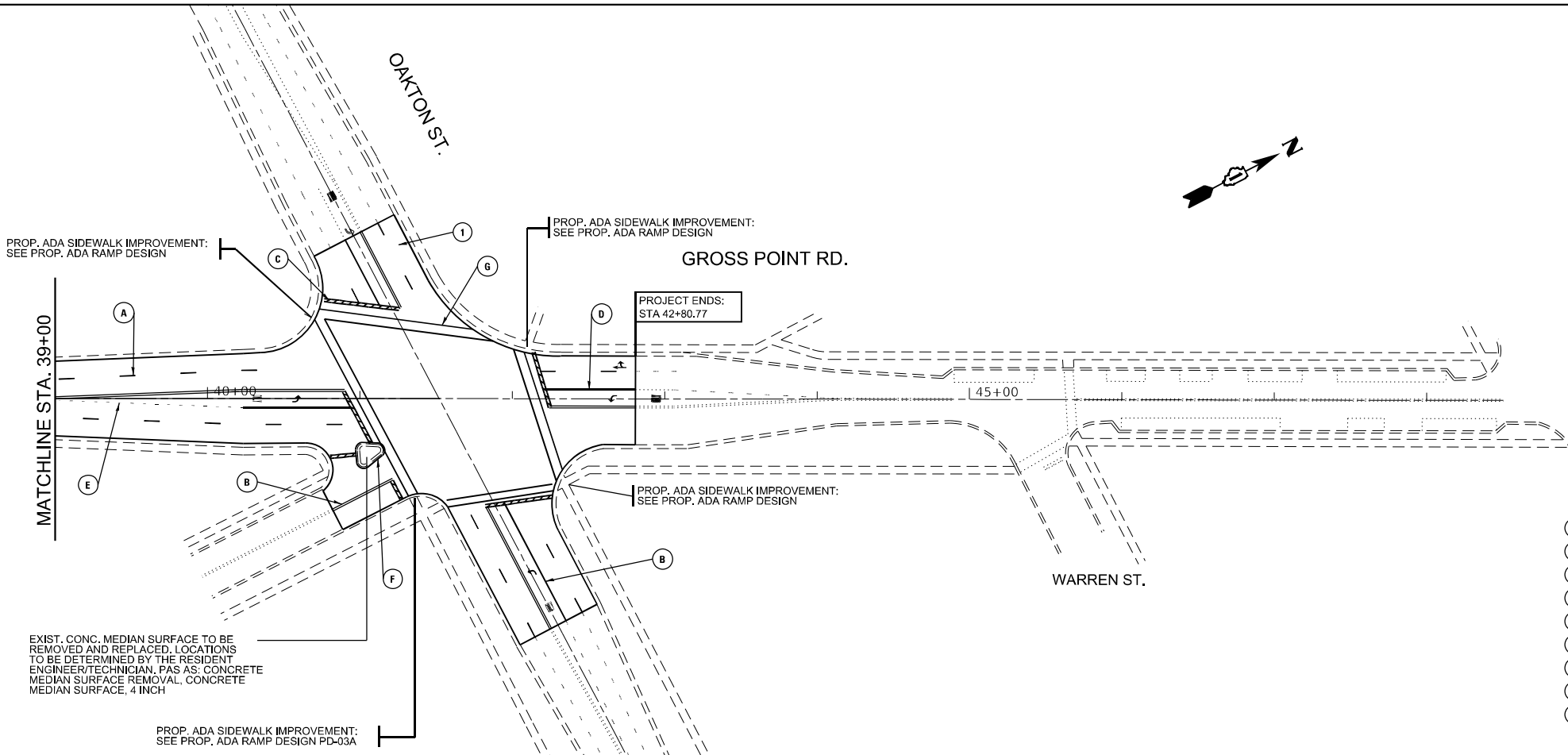
GROSS POINT RD.



OAKTON ST.

GROSS POINT RD.

WARREN ST.



PAVEMENT MARKING LEGEND

- * = THERMOPLASTIC PAVEMENT MARKING -
- ** = MODIFIED URETHANE PAVEMENT MARKING -
- (A) • LINE 4", 10' DASH-30'SKIP, WHITE (TYP.)
- (B) • LINE 4", YELLOW @ 11" C-C (TYP.)
- (C) • STOP LINE 24", WHITE (TYP.)
- (D) • TURN LANE MARKING-LINE 6", WHITE (TYP.)
- (E) • LINE 6", 2" DASH - 6' SKIP, WHITE (TYP.)
- (F) • LINE 8", WHITE (TYP.)
- (G) • LINE 6", CROSSWALK, WHITE (TYP.)
- (H) ** LINE 6", 2" DASH - 6' SKIP, WHITE (TYP.)
- (I) ** LINE 4", YELLOW (TYP.)
- (1) PROP. POLY HOT-MIX ASPHALT SURFACE COURSE, IL-9.5, MIX "E", N70 1 3/4" PROP. HMA SURFACE REMOVAL 1 3/4"

DRIVEWAY LEGEND

- PROP. P.C.C DRIVEWAY PAVEMENT, 8" (C,E)
- HMA ENTRANCES (C,E)
- HOT-MIX ASPHALT SURFACE COURSE, MIX "D" 2"
- HOT-MIX ASPHALT BASE COURSE, 8"
- NOTE: REFER TO GENERAL NOTES FOR LOCATIONS OF DRIVEWAYS

PROP. ADA SIDEWALK IMPROVEMENT:
SEE PROP. ADA RAMP DESIGN

PROP. ADA SIDEWALK IMPROVEMENT:
SEE PROP. ADA RAMP DESIGN

PROJECT ENDS:
STA 42+80.77

PROP. ADA SIDEWALK IMPROVEMENT:
SEE PROP. ADA RAMP DESIGN

EXIST. CONC. MEDIAN SURFACE TO BE
REMOVED AND REPLACED. LOCATIONS
TO BE DETERMINED BY THE RESIDENT
ENGINEER/TECHNICIAN. P.A.S. CONCRETE
MEDIAN SURFACE REMOVAL. CONCRETE
MEDIAN SURFACE, 4 INCH

PROP. ADA SIDEWALK IMPROVEMENT:
SEE PROP. ADA RAMP DESIGN PD-03A

MODEL: Default
FILE NAME: p:\work\2020\135-R5\SW\DOT\Drawings\DOT - Office\Drawings - 1\Project\13520\CADD\Drawings\13520-2h-01b.dwg

USER NAME = khans	DESIGNED -	REVISED -
	DRAWN -	REVISED -
PLOT SCALE = 100,0000' / in.	CHECKED -	REVISED -
PLOT DATE = 3/4/2021	DATE -	REVISED -

STATE OF ILLINOIS
DEPARTMENT OF TRANSPORTATION

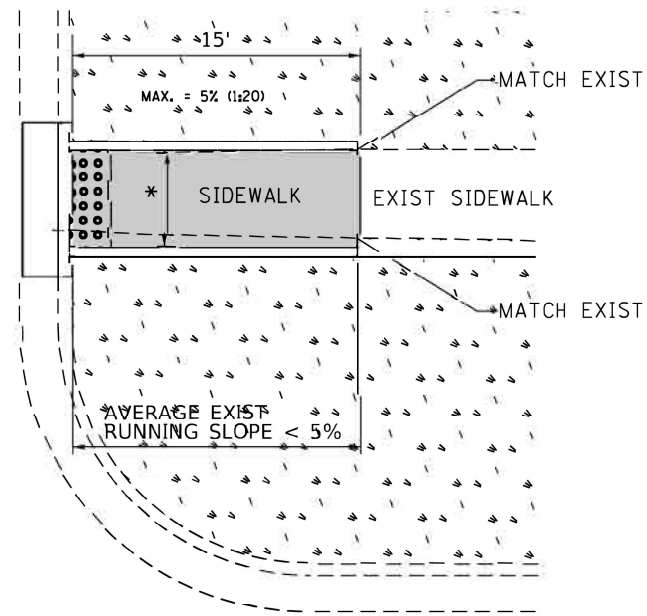
ROADWAY & PAVEMENT MARKING PLAN
GROSS POINT RD. (N OF OAKTON ST. - HOWARD ST.)

SCALE: 1"=50' SHEET OF SHEETS STA. TO STA.

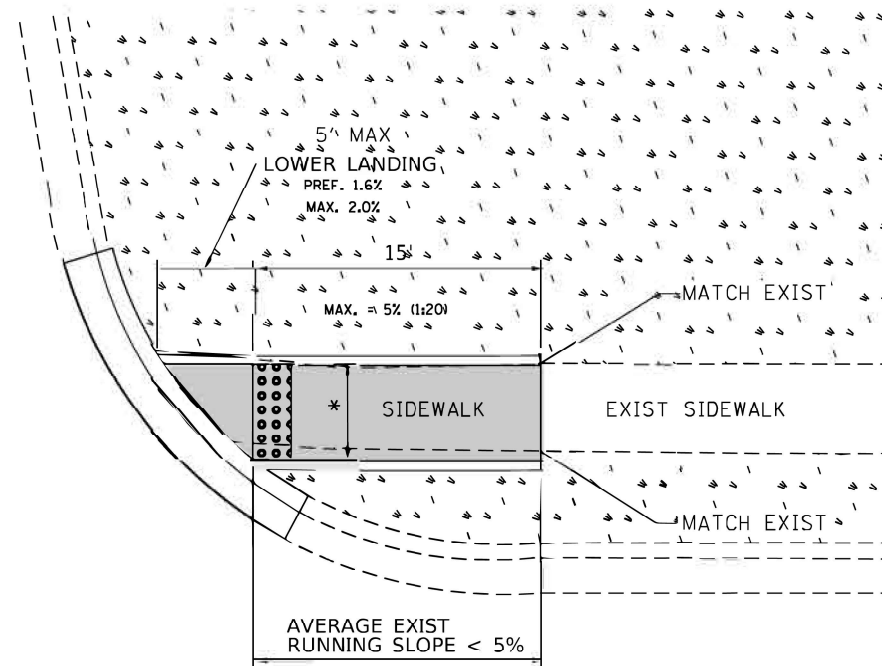
F.A.U. RTE.	SECTION	COUNTY	TOTAL SHEETS	SHEET NO.
3520	2020-135-R5&SW	COOK	23	8
			CONTRACT NO. 62M13	
		ILLINOIS	FED. AID PROJECT	

ADA DETAIL FOR SINGLE PERPENDICULAR CURB RAMPS W/ EXIST. 5% OR LESS RUN. SLOPE

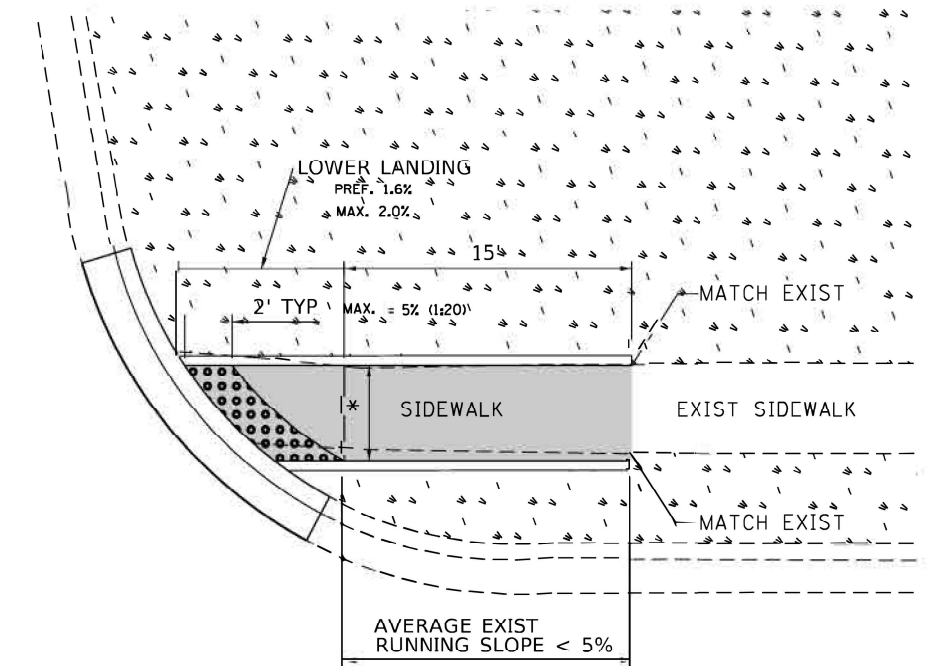
PD-01A



PD-01B

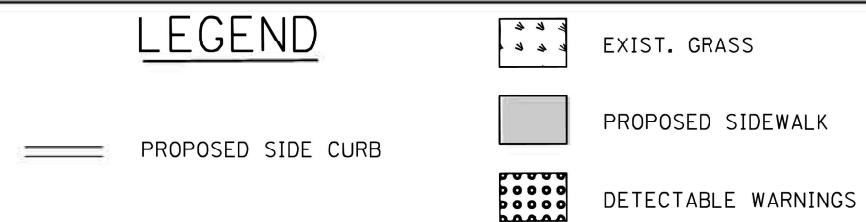


PD-01C



DESIGNER NOTES:
 1) ALL CROSS SLOPES ARE PREFERRED 1.6% (1:64), MAXIMUM 2% (1:50).
 2) SIDEWALK REALIGNMENT WILL REQUIRE DETAILED DESIGN.
 3) AREAS SURROUNDED BY PCC/ASPHALT, BUILDINGS, OR ARE NEAR TO DRIVEWAYS, REALIGNED SIDEWALK, UTILITY AND SIGNAL POLES, OR WHEN PRIVATE SIDEWALK TIES IN, WILL REQUIRE DETAILED SURVEY AND DESIGN.
 4) ALL BRICK CORNERS WILL REQUIRE SUPERVISOR APPROVAL BEFORE USING PROJECT DETAILS

LEGEND



CONSTRUCTION NOTES:
 1) ALL CROSS SLOPES ARE PREFERRED 1.6% (1:64), MAXIMUM 2% (1:50) EXCEPT WHEN TRANSITIONING TO EXISTING SIDEWALK
 * MATCH EXISTING SIDEWALK WIDTH

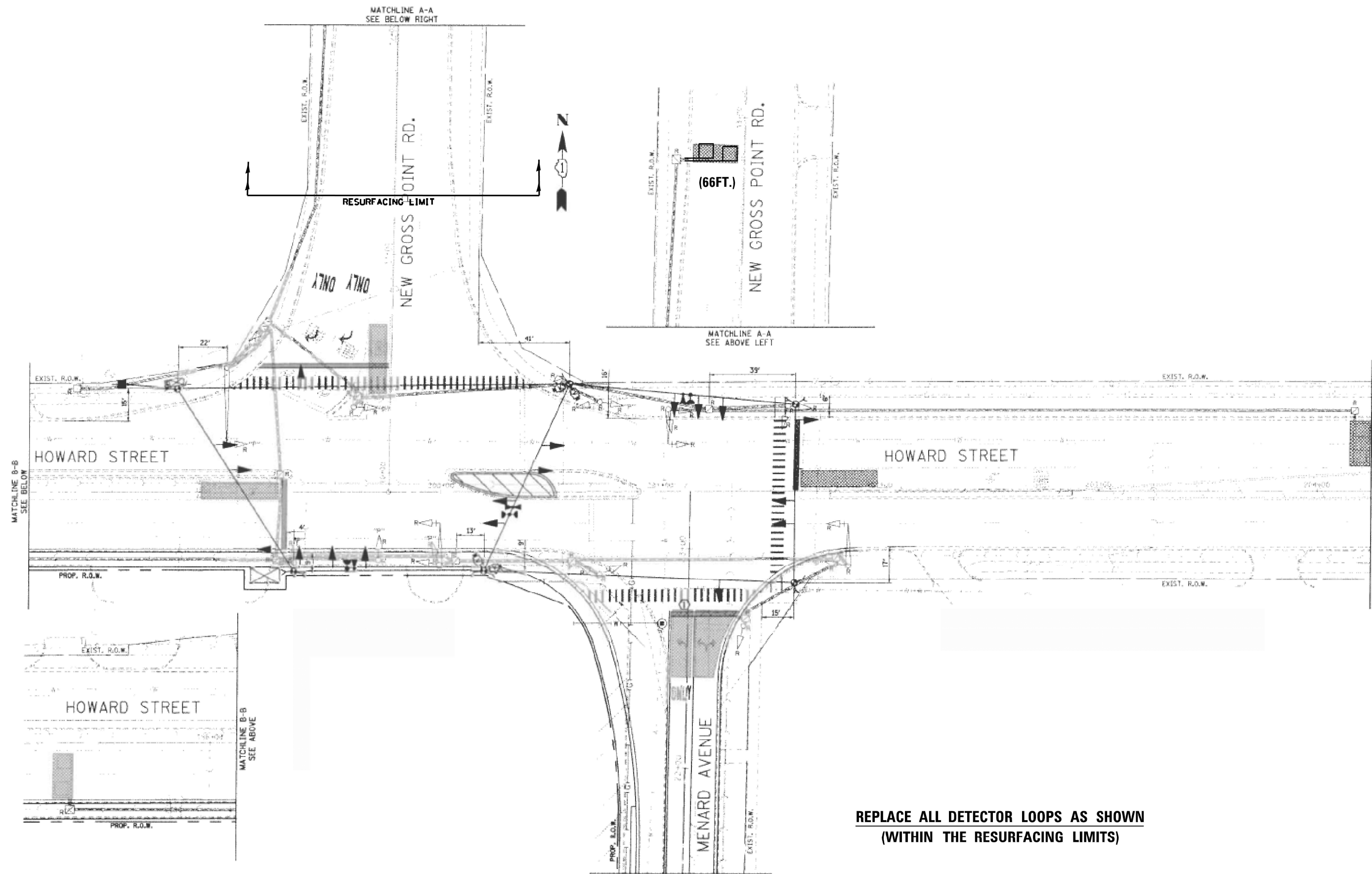
FILE NAME =	USER NAME = ldeznerm	DESIGNED -	REVISED -
S:\WP\PLANPREP\SQUAD\INDes_RL\Typical ADA details\Typical-ADA-shr-plan.dgn		DRAWN - RL 11/12/2019	REVISED -
Default	PLOT SCALE = 10.0000' / in.	CHECKED -	REVISED -
	PLOT DATE = 11/12/2019	DATE -	REVISED -

**STATE OF ILLINOIS
DEPARTMENT OF TRANSPORTATION**

**PROJECT DETAIL FOR SINGLE PERPENDICULAR CURB RAMPS
(PD-01)**

SCALE: SHEET OF SHEETS STA. TO STA.

F.A. RTE.	SECTION	COUNTY	TOTAL SHEETS	SHEET NO.
3520	2020-135-R5&SW	COOK	23	9
	PD-01			CONTRACT NO. 62M13
ILLINOIS FED. AID PROJECT				



NOTES:

1. WORK SHALL MEET THE REQUIREMENTS OF THE SPECIAL PROVISION, "DETECTOR LOOP REPLACEMENT AND/OR INSTALLATION (ROADWAY GRINDING, RESURFACING & PATCHING OPERATIONS).
2. THIS PLAN IS FOR THE SOLE PURPOSE OF DETECTOR LOOP REPLACEMENT.

CODE	ITEM	QUANTITY	UNIT
88600600	DETECTOR LOOP REPLACEMENT	66	FOOT

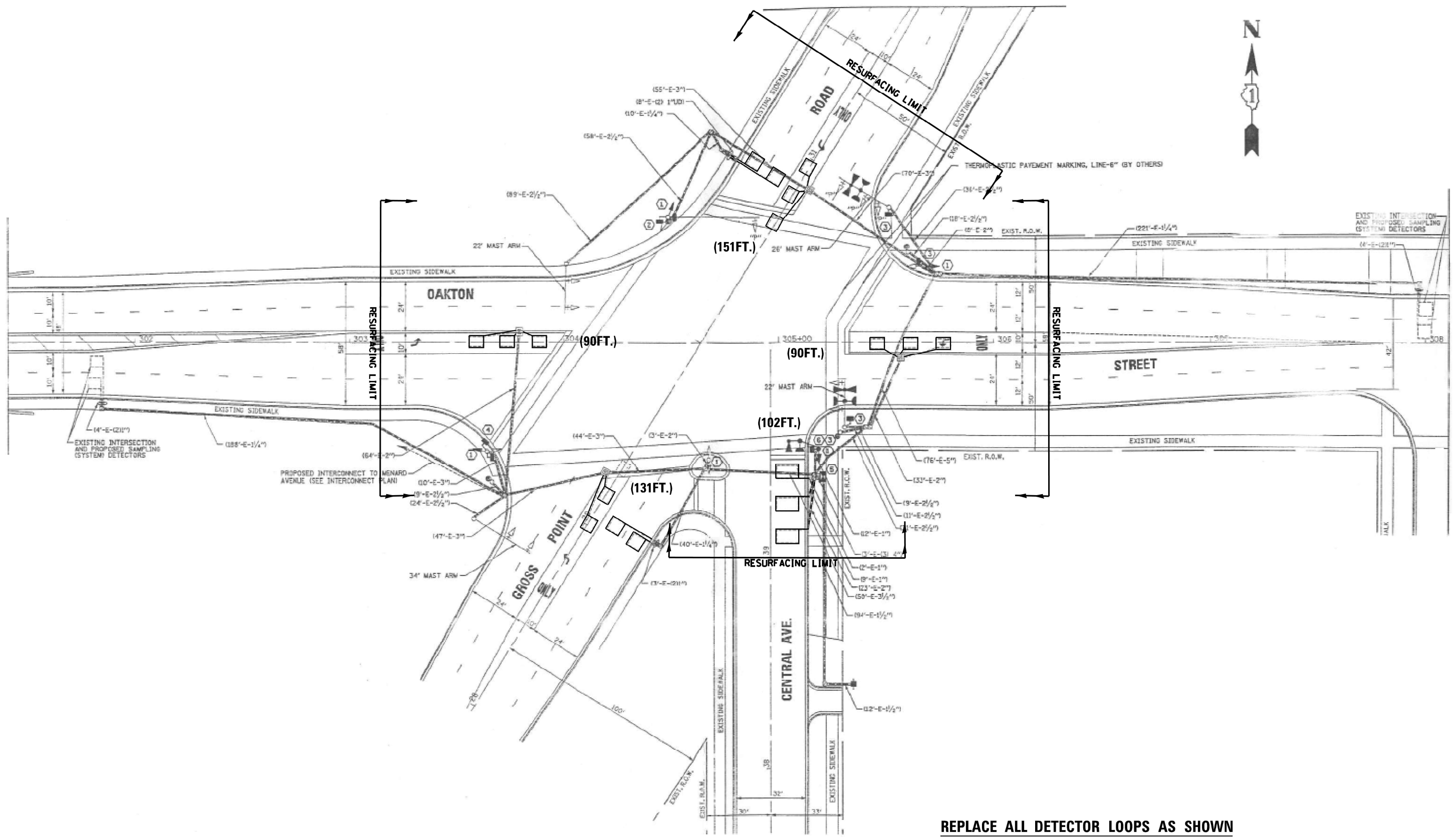
TS#5330

FILE NAME =	USER NAME = mezag	DESIGN - Steven M. Nguyen	REVISED -
P:\Detector Loops\2019-20\New 62M13 (Gross Point Rd.-Cook)\CADD\1 TS#5330 Gross Point Rd.-Cook.dwg	DRAWN - Gonzalo Meza	CHECKED - Steven M. Nguyen	REVISED -
Default	PLOT SCALE = 48.0000' / in.	DATE - 12/09/2020	REVISED -

**STATE OF ILLINOIS
DEPARTMENT OF TRANSPORTATION**

DETECTOR LOOP REPLACEMENT PLAN			
GROSS POINT AT NORTH OF HOWARD ST.			
SCALE:	SHEET	OF SHEETS	STA. TO STA.

F.A.P. RTE.	SECTION	COUNTY	TOTAL SHEETS	SHEET NO.
3520	2020-135-RS&SW	COOK	23	10
CONTRACT NO. 62M13				
ILLINOIS FED. AID PROJECT				



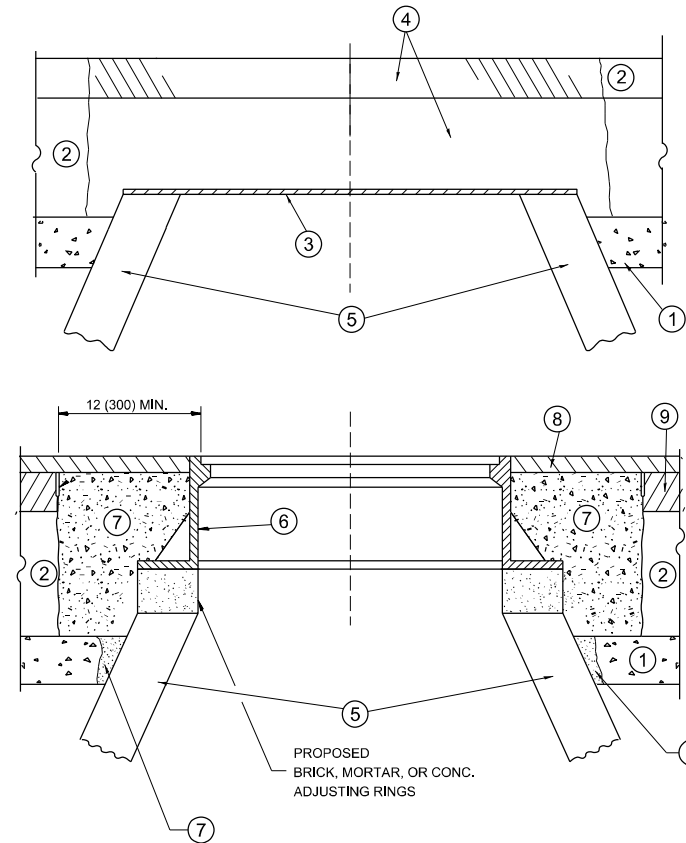
**REPLACE ALL DETECTOR LOOPS AS SHOWN
(WITHIN THE RESURFACING LIMITS)**

NOTES:

1. WORK SHALL MEET THE REQUIREMENTS OF THE SPECIAL PROVISION, "DETECTOR LOOP REPLACEMENT AND/OR INSTALLATION (ROADWAY GRINDING, RESURFACING & PATCHING OPERATIONS).
2. THIS PLAN IS FOR THE SOLE PURPOSE OF DETECTOR LOOP REPLACEMENT.

CODE	ITEM	QUANTITY	UNIT	
88600600	DETECTOR LOOP REPLACEMENT	564	FOOT	TS#5255

FILE NAME =	USER NAME = mezag	DESIGN - Steven M. Nguyen	REVISED -	STATE OF ILLINOIS DEPARTMENT OF TRANSPORTATION	DETECTOR LOOP REPLACEMENT PLAN GROSS POINT AT OAKTON ST.	F.A.P. RTE.	SECTION	COUNTY	TOTAL SHEETS	SHEET NO.
P:\Detector Loops\2019-20\New 62M13 (Gross Point Rd.-Cook)\CADD\2 TS#5255 Gross Point	DRAWN - Gonzalo Mezo	REVISED -	3520			2020-135-RS&SW	COOK	23	11	
PLOT SCALE = 48.0000' / in.	CHECKED - Steven M. Nguyen	REVISED -	CONTRACT NO. 62M13							
Default	DATE - 12/09/2020	REVISED -	ILLINOIS FED. AID PROJECT							



CONSTRUCTION PROCEDURES

STAGE 1 (BEFORE PAVEMENT MILLING)

- A) REMOVE A MINIMUM OF 12 (300) OF THE PAVEMENT FROM AROUND THE STRUCTURE.
- B) REMOVE THE EXISTING FRAME AND LID FROM THE STRUCTURE.
- C) COVER THE STRUCTURE OPENING WITH A 36 (900) DIAMETER METAL PLATE.
- D) BACKFILL WITH CRUSHED STONE AND A MINIMUM 1 1/2 (40) THICK HMA SURFACE MIX APPROVED BY THE ENGINEER.

STAGE 2 (AFTER PAVEMENT MILLING)

- A) REMOVE THE HMA SURFACE MIX AND CRUSHED STONE.
- B) INSTALL THE FRAME AND LID; ADJUST THE FRAME TO ITS FINAL SURFACE ELEVATION.
- C) THE SURROUNDING SPACE SHALL BE FILLED WITH CLASS PP-1 CONCRETE TO THE ELEVATION OF THE SURFACE OF THE EXISTING BASE COURSE OR THE BINDER COURSE.

* UNLESS OTHERWISE SPECIFIED IN THE PLANS.

THE PROCEDURE EXPLAINED ABOVE SHALL CONFORM TO THE APPLICABLE PORTIONS OF SECTIONS 353, 406, 602, AND 603 OF THE STANDARD SPECIFICATIONS EXCEPT THAT "THE CONTRACTOR SHALL ADJUST THE STRUCTURES TO THE FINISHED PAVEMENT ELEVATION NO MORE THAN 5 CALENDAR DAYS PRIOR TO PLACEMENT OF THE FINAL LIFT OF SURFACE UNLESS APPROVED BY THE ENGINEER."

LEGEND

- ① SUB-BASE GRANULAR MATERIAL
- ② EXISTING PAVEMENT
- ③ 36 (900) DIAMETER METAL PLATE
- ④ PROPOSED CRUSHED STONE AND HMA SURFACE MIX
- ⑤ EXISTING STRUCTURE
- ⑥ FRAME AND LID (SEE NOTES)
- ⑦ CLASS PP-1 CONCRETE
- ⑧ PROPOSED HMA SURFACE COURSE
- ⑨ PROPOSED HMA BINDER COURSE

LOCATION OF STRUCTURES

THE CONTRACTOR WILL BE REQUIRED TO KEEP A RECORD OF THE LOCATIONS OF THE BURIED STRUCTURES ACCORDING TO THE STATION AND DISTANCE LEFT OR RIGHT OF THE CENTERLINE OF PAVEMENT. UPON COMPLETION OF THE WORK, THE CONTRACTOR WILL DELIVER THE RECORD TO THE ENGINEER.

BASIS OF PAYMENT

REMOVING FRAMES AND LIDS ON DRAINAGE AND UTILITY STRUCTURES IN THE PAVEMENT PRIOR TO MILLING, AND ADJUSTING TO FINAL GRADE PRIOR TO PLACING THE SURFACE COURSE, WILL BE PAID FOR AT THE CONTRACT UNIT PRICE EACH FOR "FRAMES AND LIDS TO BE ADJUSTED (SPECIAL)."

THIS WORK WILL NOT BE PAID FOR WHEN DRAINAGE AND UTILITY STRUCTURES ARE SPECIFIED FOR PAYMENT AS STRUCTURE RECONSTRUCTION.

NEW FRAMES AND LIDS, WHEN SPECIFIED, WILL BE PAID FOR SEPARATELY.

NOTES

EXISTING BROKEN FRAMES AND LIDS SHALL BE REMOVED AND DISPOSED OF BY THE CONTRACTOR AND SHALL BE REPLACED AS DIRECTED BY THE ENGINEER. REPLACEMENT FRAMES AND LIDS WILL BE PAID FOR IN ACCORDANCE WITH ARTICLE 109.04 OF THE STANDARD SPECIFICATIONS UNLESS A SEPARATE PAY ITEM HAS BEEN PROVIDED.

IF THE EXISTING LIDS ARE OPEN, THE FRAME WILL BE ADJUSTED TO THE ELEVATION OF THE MILLED PAVEMENT SURFACE PRIOR TO THE MILLING OPERATION. THE FRAME WILL NOT BE REMOVED AND COVERED BY THE METAL PLATE.

CITY OF CHICAGO CASTINGS ARE THE PROPERTY OF THE CITY AND THE CONTRACTOR SHALL NOTIFY THE CITY FOR REMOVAL AND DISPOSITION OF THE CASTINGS.

THE METAL PLATE USED TO COVER THE STRUCTURE SHALL REMAIN THE PROPERTY OF THE CONTRACTOR.

WHEN STRUCTURES ARE TO BE ADJUSTED OR RECONSTRUCTED, THE LOWERING AND RAISING OF THE FRAMES AND LIDS WILL NOT BE PAID FOR SEPARATELY BUT WILL BE INCLUDED IN THE COST OF THE CORRESPONDING PAY ITEM.

DETAILS FOR FRAMES AND LIDS ADJUSTMENT WITH MILLING

ALL DIMENSIONS ARE IN INCHES (MILLIMETERS) UNLESS OTHERWISE SHOWN

MODEL: Default
 FILE NAME: p:\m\m\room.dwg
 PROJECT: ID: 133520
 CADD DATA: Design
 DIS: S&S.dwg

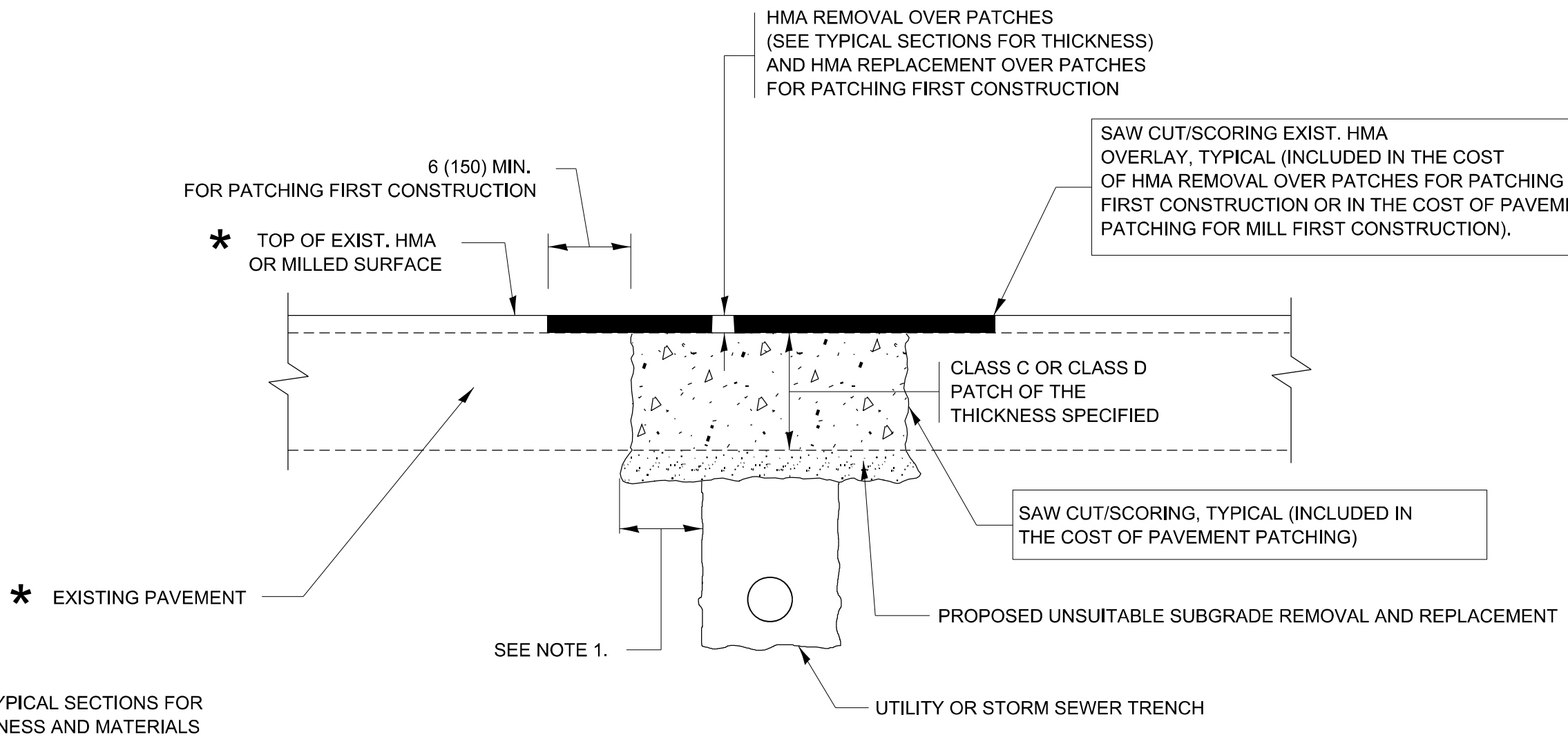
USER NAME = khans	DESIGNED - R. SHAH	REVISED - R. WEDEMAN 05-14-04
	DRAWN -	REVISED - R. BORO 01-01-07
PLOT SCALE = 100,0000' / in.	CHECKED -	REVISED - R. BORO 03-09-11
PLOT DATE = 3/4/2021	DATE - 10-25-94	REVISED - R. BORO 12-06-11

**STATE OF ILLINOIS
DEPARTMENT OF TRANSPORTATION**

**DETAILS FOR
FRAMES AND LIDS ADJUSTMENT WITH MILLING**

SCALE: NONE SHEET 1 OF 1 SHEETS STA. TO STA.

F.A.U. RTE.	SECTION	COUNTY	TOTAL SHEETS	SHEET NO.
3520	2020-135-R5&SW	COOK	23	12
BD600-03 (BD-8)		CONTRACT NO. 62M13		
ILLINOIS		FED. AID PROJECT		



NOTES:

1. THE WIDTH OF THE FULL DEPTH PATCH OVER A TRENCH SHALL BE 12 (300) WIDER ON EACH SIDE OF THE TRENCH.
2. FOR METHOD OF MEASUREMENT AND BASIS OF PAYMENT, SEE RECURRING SPECIAL PROVISION "PATCHING WITH HOT-MIX ASPHALT OVERLAY REMOVAL".

SEQUENCE OF CONSTRUCTION (PATCHING FIRST)

1. REMOVE THE EXISTING HMA MATERIAL OVER THE AREA TO BE PATCHED.
2. REMOVE AND REPLACE WITH CLASS C OR D PATCH.
3. REPLACE HMA MATERIAL OVER THE AREA TO BE PATCHED.

SEQUENCE OF CONSTRUCTION (MILLING FIRST)

1. MILL HMA FIRST IF THERE IS AT LEAST 4 1/2 INCHES OR MORE OF HMA MATERIAL ON TOP OF THE EXISTING PAVEMENT OR IF THE PAVEMENT IS FULL DEPTH HMA. A MINIMUM OF 2 INCHES OF HMA MATERIAL SHALL BE IN PLACE AFTER MILLING.
2. REMOVE AND REPLACE WITH FULL DEPTH CLASS D PATCHES TO TOP OF MILLED SURFACE.

ALL DIMENSIONS ARE IN INCHES (MILLIMETERS) UNLESS OTHERWISE SHOWN.

MODEL: Default
 FILE NAME: p:\pub\amr\room.dwg
 PROJECT: 13520\CADDData\Design\Dis\S&S.dgn
 USER: kshans
 PLOT SCALE: 100,0000' / in.
 PLOT DATE: 3/4/2021

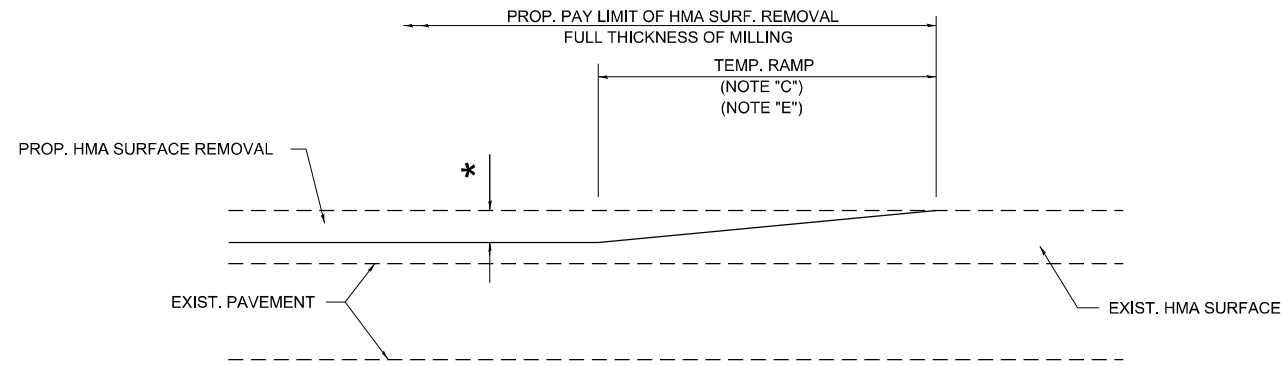
USER NAME = kshans	DESIGNED - R. SHAH	REVISED - A. ABBAS 04-27-98
	DRAWN -	REVISED - R. BORO 01-01-07
PLOT SCALE = 100,0000' / in.	CHECKED -	REVISED - R. BORO 09-04-07
PLOT DATE = 3/4/2021	DATE - 10-25-94	REVISED - K. ENG 10-27-08

**STATE OF ILLINOIS
DEPARTMENT OF TRANSPORTATION**

**PAVEMENT PATCHING FOR
HMA SURFACED PAVEMENT**

SCALE: NONE SHEET 1 OF 1 SHEETS STA. TO STA.

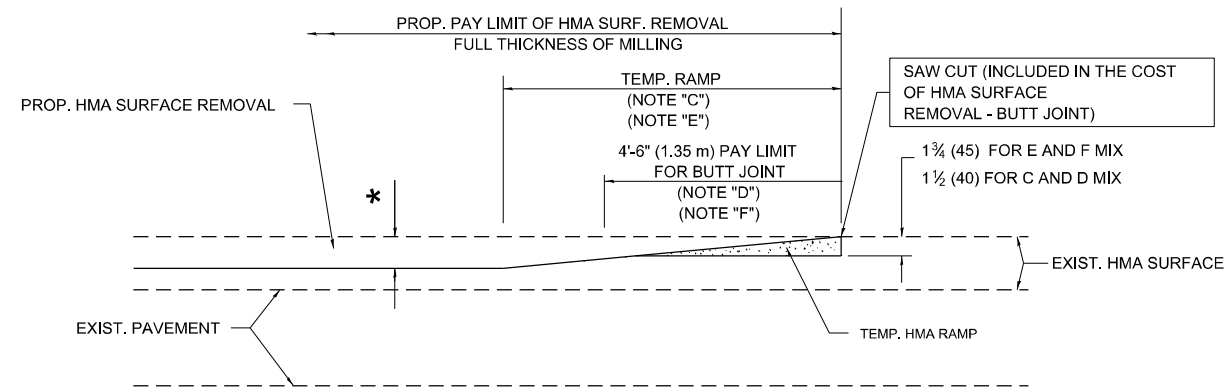
F.A.U. RTE.	SECTION	COUNTY	TOTAL SHEETS	SHEET NO.
3520	2020-135-R5&SW	COOK	23	13
BD400-04 (BD-22)		CONTRACT NO.62M13		
ILLINOIS FED. AID PROJECT				



MILLED TEMPORARY RAMP

(FOR BUTT JOINT AND HMA TAPER SEE DETAIL BELOW)

OPTION 1

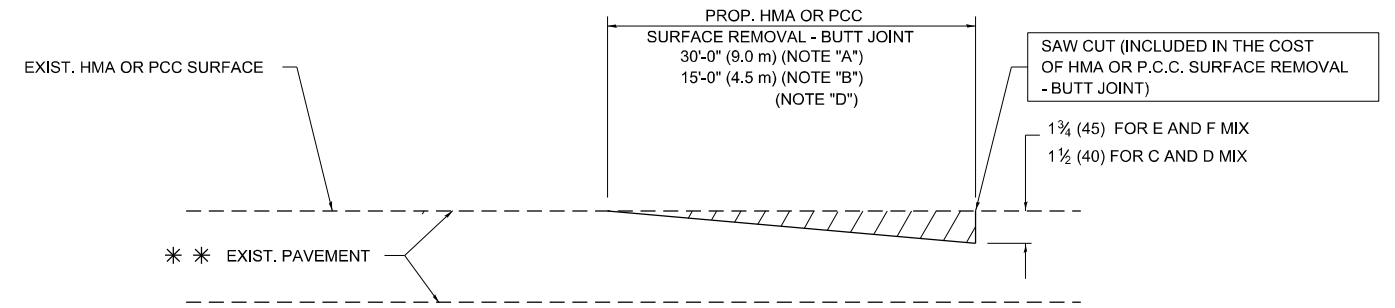


HMA CONSTRUCTED TEMPORARY RAMP

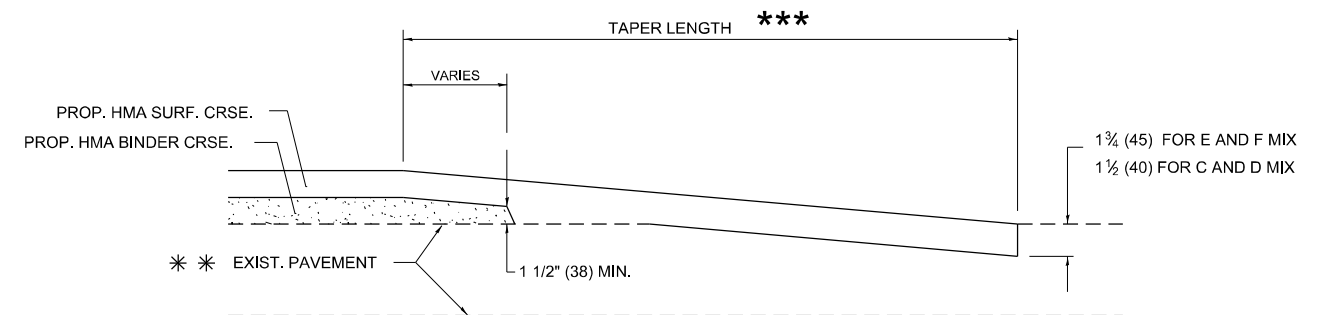
(FOR BUTT JOINT AND HMA TAPER SEE DETAIL BELOW)

OPTION 2

TYPICAL TEMPORARY RAMP



BUTT JOINT DETAIL



HMA TAPER DETAIL

TYPICAL BUTT JOINT AND HMA TAPER FOR RESURFACING ONLY

*** PC CONCRETE, HMA OR HMA RESURFACED PAVEMENT.

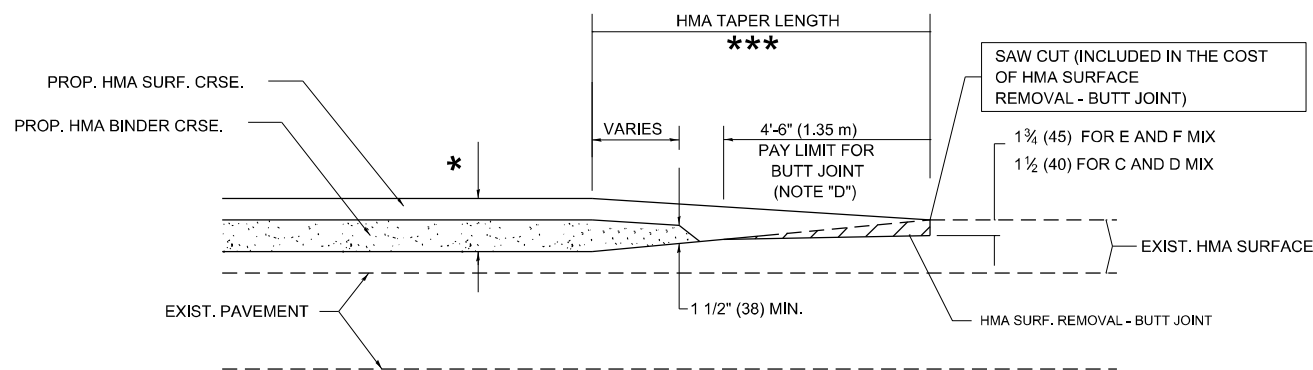
NOTES

- A. MAINLINE ROADWAYS AND MAJOR SIDE ROADS.
- B. MINOR SIDE ROADS.
- C. THE TEMP. RAMP SHALL BE CONSTRUCTED IMMEDIATELY UPON REMOVAL OF THE EXISTING HMA SURFACE.
- D. THE BUTT JOINT SHALL BE CONSTRUCTED IMMEDIATELY PRIOR TO PLACING THE PROPOSED HMA COURSES.
- E. TAPER THE TEMP. RAMP AT A RATE OF 3'-0" (900 mm) PER 1 INCH (25 mm) OF MILLING THICKNESS.
- F. INSTALLATION AND REMOVAL OF THE 4'-6" (1.35 m) TEMP. RAMP IS INCLUDED IN COST OF HMA SURFACE REMOVAL - BUTT JOINT.
* SEE TYPICAL SECTIONS FOR MILLING THICKNESS.
- G. SEE ARTICLE 406.08 AND 406.14 OF THE STANDARD SPECIFICATIONS FOR "HMA AND/OR PCC SURFACE REMOVAL, BUTT JOINT".
*** 20'-0" (6.1 m) PER 1 (25) RESURFACING (NOTE "A")
10'-0" (3.0 m) PER 1 (25) RESURFACING (NOTE "B")

BASIS OF PAYMENT

THE BUTT JOINT WILL BE PAID FOR AT THE CONTRACT UNIT PRICE PER SQUARE YARD (SQUARE METER) FOR "HOT-MIX ASPHALT SURFACE REMOVAL - BUTT JOINT" OR FOR "PORTLAND CEMENT CONCRETE SURFACE REMOVAL - BUTT JOINT".

ALL DIMENSIONS ARE IN INCHES (MILLIMETERS) UNLESS OTHERWISE SHOWN.



BUTT JOINT AND HMA TAPER

TYPICAL BUTT JOINT AND HMA TAPER FOR MILLING AND RESURFACING

MODEL: Default
FILE NAME: p:\mhammon.dwg
PROJECT: 2020-135-R5&SW
PROJECT DATE: 03/21/2021
PROJECT LOCATION: COOK COUNTY
PROJECT DESCRIPTION: ILLINOIS STATE ROADWAY IMPROVEMENT PROJECT
PROJECT NUMBER: 2020-135-R5&SW
PROJECT SHEET: 15
PROJECT CONTRACT: 62M13

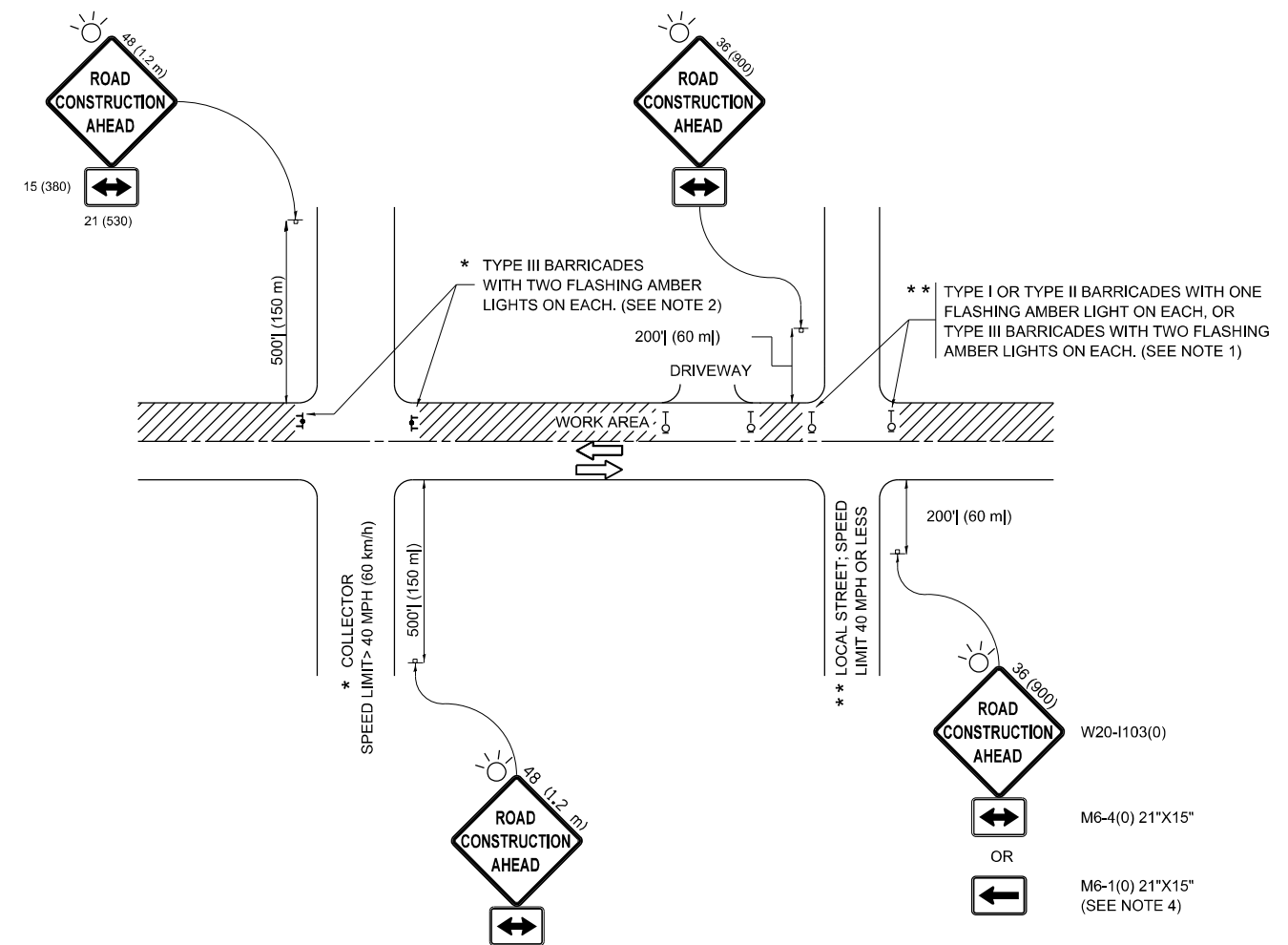
USER NAME = khans	DESIGNED - M. DE YONG	REVISED - R. SHAH 10-25-94
	DRAWN -	REVISED - A. ABBAS 03-21-97
PLOT SCALE = 100,0000' / in.	CHECKED -	REVISED - M. GOMEZ 04-06-01
PLOT DATE = 3/4/2021	DATE - 06-13-90	REVISED - R.BORO 01-01-07

**STATE OF ILLINOIS
DEPARTMENT OF TRANSPORTATION**

**BUTT JOINT AND
HMA TAPER DETAILS**

SCALE: NONE SHEET 1 OF 1 SHEETS STA. TO STA.

F.A.U. RTE.	SECTION	COUNTY	TOTAL SHEETS	SHEET NO.
3520	2020-135-R5&SW	COOK	23	15
BD400-05 BD32		CONTRACT NO.62M13		
ILLINOIS FED. AID PROJECT				



NOTES:

1. SIDE ROAD WITH A SPEED LIMIT OF 40 MPH (60 km/h) OR LESS AS SHOWN ON THE DRAWING AND AS DIRECTED BY THE ENGINEER:
 - a) ONE "ROAD CONSTRUCTION AHEAD" SIGN 36 x 36 (900x900) WITH A FLASHER MOUNTED ON IT APPROXIMATELY 200' (60 m) IN ADVANCE OF THE MAIN ROUTE.
 - b) THE CLOSED PORTION OF THE MAIN ROUTE SHALL BE PROTECTED BY BLOCKING WITH TYPE I, TYPE II OR TYPE III BARRICADES, 1/3 OF THE CROSS SECTION OF THE CLOSED PORTION.
2. SIDE ROAD WITH A SPEED LIMIT GREATER THAN 40 MPH (60 km/h) AS SHOWN ON THE DRAWING AND AS DIRECTED BY THE ENGINEER:
 - a) ONE "ROAD CONSTRUCTION AHEAD" SIGN 48 x 48 (1.2 m x 1.2 m) WITH A FLASHER MOUNTED ON IT APPROXIMATELY 500' (150 m) IN ADVANCE OF THE MAIN ROUTE.
 - b) BLOCKING WITH TYPE III BARRICADES, 1/2 OF THE CROSS SECTION OF THE CLOSED PORTION.
3. CONES MAY BE SUBSTITUTED FOR BARRICADES OR DRUMS AT HALF THE SPACING DURING DAY OPERATIONS. CONES SHALL BE A MINIMUM OF 28 (710) IN HEIGHT.
4. WHEN THE SIDE ROAD LIES BETWEEN THE BEGINNING OF THE MAINLINE SIGNING AND THE WORK ZONE, A SINGLE HEADED ARROW (M6-1) SHALL BE USED IN LIEU OF THE DOUBLE HEADED ARROW (M6-4).
5. WHEN WORK IS BEING PERFORMED ON A SIDE ROAD OR DRIVEWAY, FOLLOW THE APPLICABLE STANDARD(S). THE DIRECTIONAL ARROW (M6-1 OR M6-4) SHALL BE COVERED OR REMOVED WHEN NO LONGER CONSISTENT WITH THE TRAFFIC CONTROL SET-UP.
6. ADVANCE WARNING SIGNS ARE TO BE OMITTED ON DRIVEWAYS UNLESS OTHERWISE SPECIFIED IN THE PLANS OR BY THE ENGINEER.
7. THE TRAFFIC CONTROL AND PROTECTION FOR SIDE ROADS, INTERSECTIONS, AND DRIVEWAYS SHALL BE INCLUDED IN THE COST OF SPECIFIED TRAFFIC CONTROL STANDARDS OR ITEMS.

All dimensions are in inches (millimeters) unless otherwise shown.

MODEL: Default
 FILE NAME: p:\u0000\m0000\dot\illinois\pwr\DOT\Documents\DOT_Offices\Distrefc_1\Project\ID13320\CADD\Drawings\Design\Distrefc.dgn

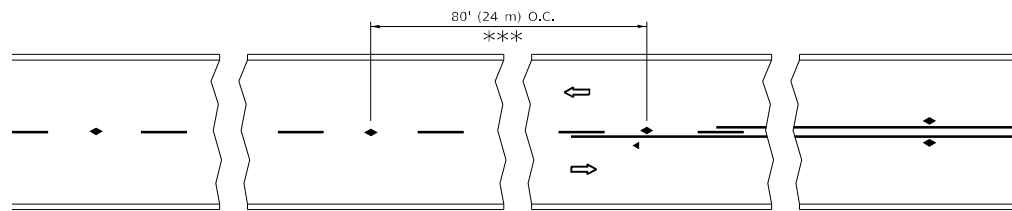
USER NAME = khans	DESIGNED - L.H.A.	REVISED - A. HOUSEH 10-15-96
PLOT SCALE = 100,0000' / in.	CHECKED -	REVISED - T. RAMMACHER 01-06-00
PLOT DATE = 3/4/2021	DATE - 06-89	REVISED - A. SCHUETZE 07-01-13
		REVISED - A. SCHUETZE 09-15-16

**STATE OF ILLINOIS
DEPARTMENT OF TRANSPORTATION**

**TRAFFIC CONTROL AND PROTECTION FOR
SIDE ROADS, INTERSECTIONS, AND DRIVEWAYS**

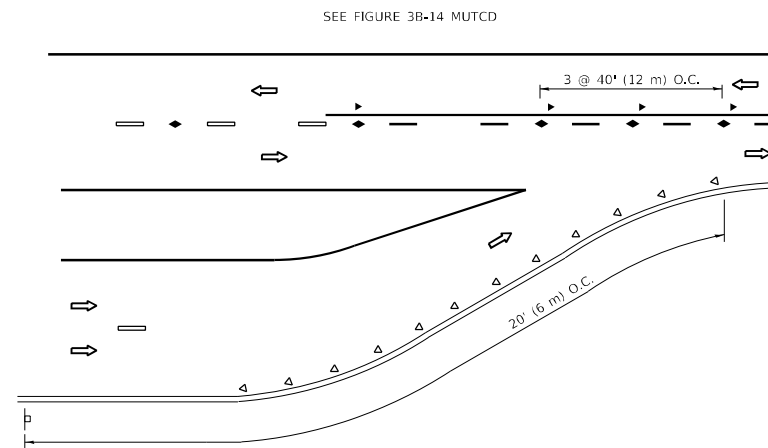
SCALE: NONE SHEET 1 OF 1 SHEETS STA. TO STA.

F.A.U. RTE.	SECTION	COUNTY	TOTAL SHEETS	SHEET NO.
3520	2020-135-R5&SW	COOK	23	16
TC-10		CONTRACT NO.62M13		
ILLINOIS FED. AID PROJECT				

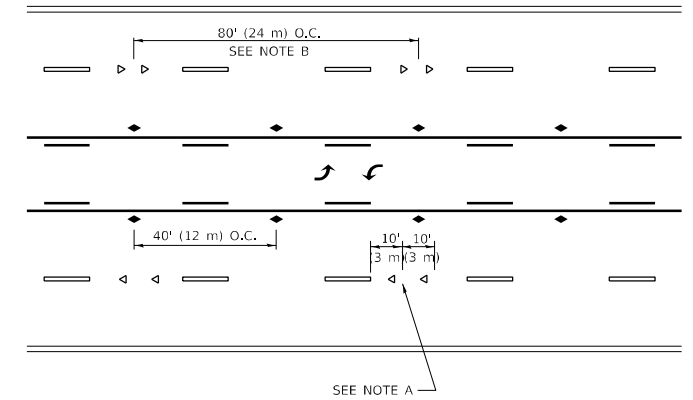


*** REDUCE TO 40' (12 m) O.C. ON CURVES WITH POSTED OR ADVISORY SPEED 45 M.P.H. (70 km/h) OR LESS.

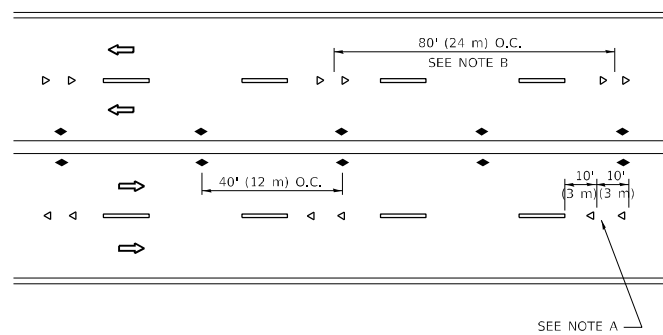
TWO-LANE/TWO-WAY



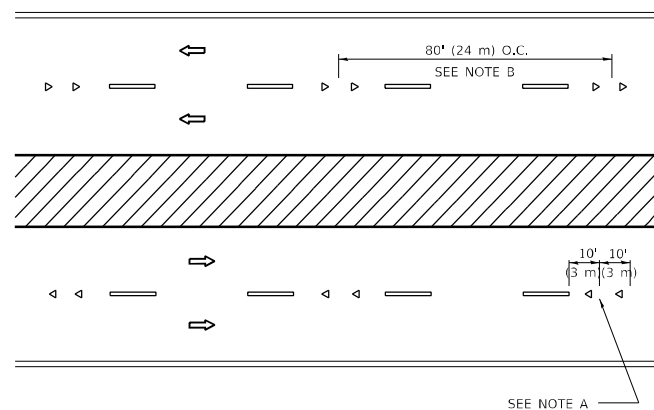
LANE REDUCTION TRANSITION



TWO-WAY LEFT TURN



MULTI-LANE/UNDIVIDED



MULTI-LANE/DIVIDED

GENERAL NOTES

1. MARKERS USED WITH DASHED LINES SHALL BE CENTERED IN THE GAP BETWEEN SEGMENTS.
2. MARKERS USED ADJACENT TO SOLID LINES SHALL BE OFFSET 2 TO 3 (50 TO 75) TOWARD TRAFFIC AS SHOWN.
3. MARKERS THROUGH TANGENTS LESS THAN 500' (150 m) IN LENGTH BETWEEN CURVES SHALL BE INSTALLED AT THE LESSER OF THE TWO CURVE SPACINGS.
4. MARKERS ARE TO BE USED ADJACENT TO BOTH SOLID WHITE LINES IN DUAL LEFT TURN LANES

SYMBOLS

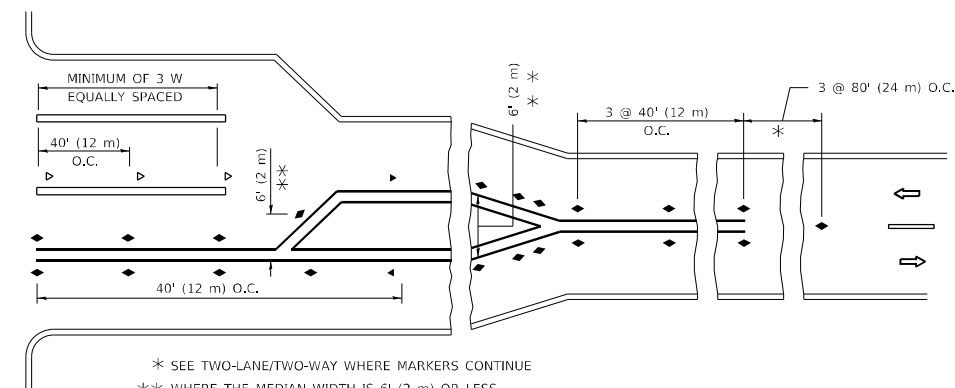
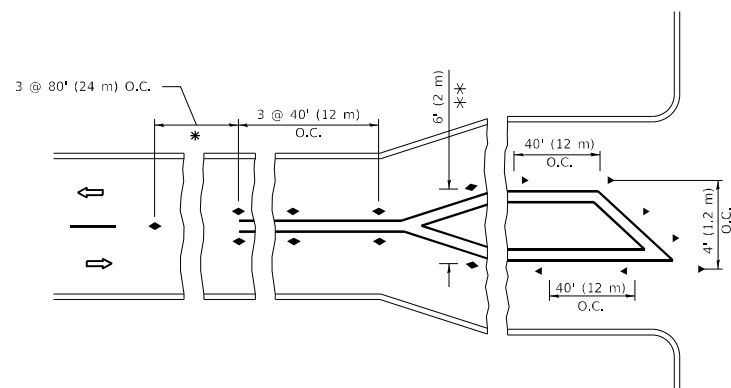
- YELLOW STRIPE
- WHITE STRIPE
- ◀ ONE-WAY AMBER MARKER
- ◀ ONE-WAY CRYSTAL MARKER (W/O)
- ◆ TWO-WAY AMBER MARKER

LANE MARKER NOTES

- A. USE DOUBLE LANE LINE MARKERS SPACED AS SHOWN.
- B. REDUCE TO 40' (12 m) O.C. ON CURVES WHERE ADVISORY SPEEDS ARE 10 M.P.H. (20 km/h) LOWER THAN POSTED SPEEDS.

DESIGN NOTES

1. DOUBLE LANE LINE MARKERS SHALL BE USED UNLESS SPECIFIED OTHERWISE.
2. EXCEPT AS SHOWN ON THE LANE REDUCTION TRANSITION AND FREEWAY EXIT RAMP DETAIL, MARKERS ARE NOT TO BE SPECIFIED ON RIGHT EDGE LINES.
3. THE EXACT MARKER LIMITS, SPACING, AND COLOR SHALL BE INCLUDED IN THE PLANS WHEN STANDARD SPECIFICATIONS ARE NOT BEING USED.
4. MARKERS SHOULD NOT BE USED ALONGSIDE CURBS EXCEPT FOR EXTREMELY SHORT SECTIONS OF CURBS WHERE NOT MORE THAN TWO MARKERS WOULD BE INVOLVED.



* SEE TWO-LANE/TWO-WAY WHERE MARKERS CONTINUE
 ** WHERE THE MEDIAN WIDTH IS 6' (2 m) OR LESS USE TWO-WAY MARKERS.

TURN LANES

All dimensions are in inches (millimeters) unless otherwise shown.

MODEL: Default
 FILE NAME: p:\data\room\dot\illinois\dot\Office\Distric: 1\Projects\13520\CADD\Design\Distric.dgn

USER NAME = khans	DESIGNED -	REVISED - T. RAMMACHER 03-12-99
PLOT SCALE = 100,0000' / in.	DRAWN -	REVISED - T. RAMMACHER 01-06-00
PLOT DATE = 3/4/2021	CHECKED -	REVISED - C. JUCIUS 09-09-09
	DATE -	REVISED - C. JUCIUS 07-01-13

**STATE OF ILLINOIS
 DEPARTMENT OF TRANSPORTATION**

**TYPICAL APPLICATIONS
 RAISED REFLECTIVE PAVEMENT MARKERS (SNOW-PLOW RESISTANT)**

SCALE: NONE SHEET 1 OF 1 SHEETS STA. TO STA.

F.A.U. RTE.	SECTION	COUNTY	TOTAL SHEETS	SHEET NO.
3520	2020-135-R5&SW	COOK	23	17
TC-11			CONTRACT NO.62M13	
ILLINOIS		FED. AID PROJECT		

TURN BAY ENTRANCE AT START OF LANE CLOSURE TAPER

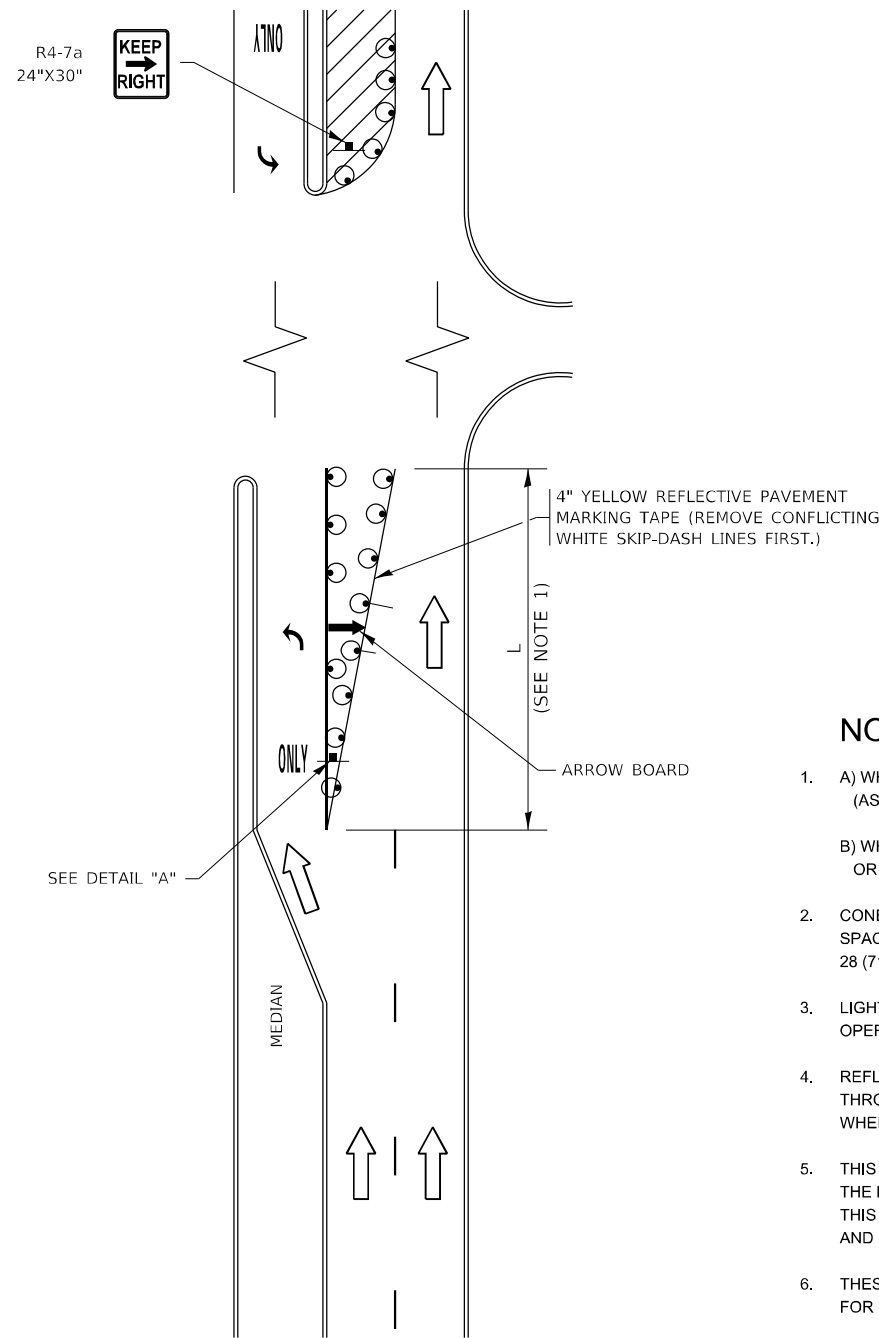


FIGURE 1

TURN BAY ENTRANCE WITHIN A LANE CLOSURE

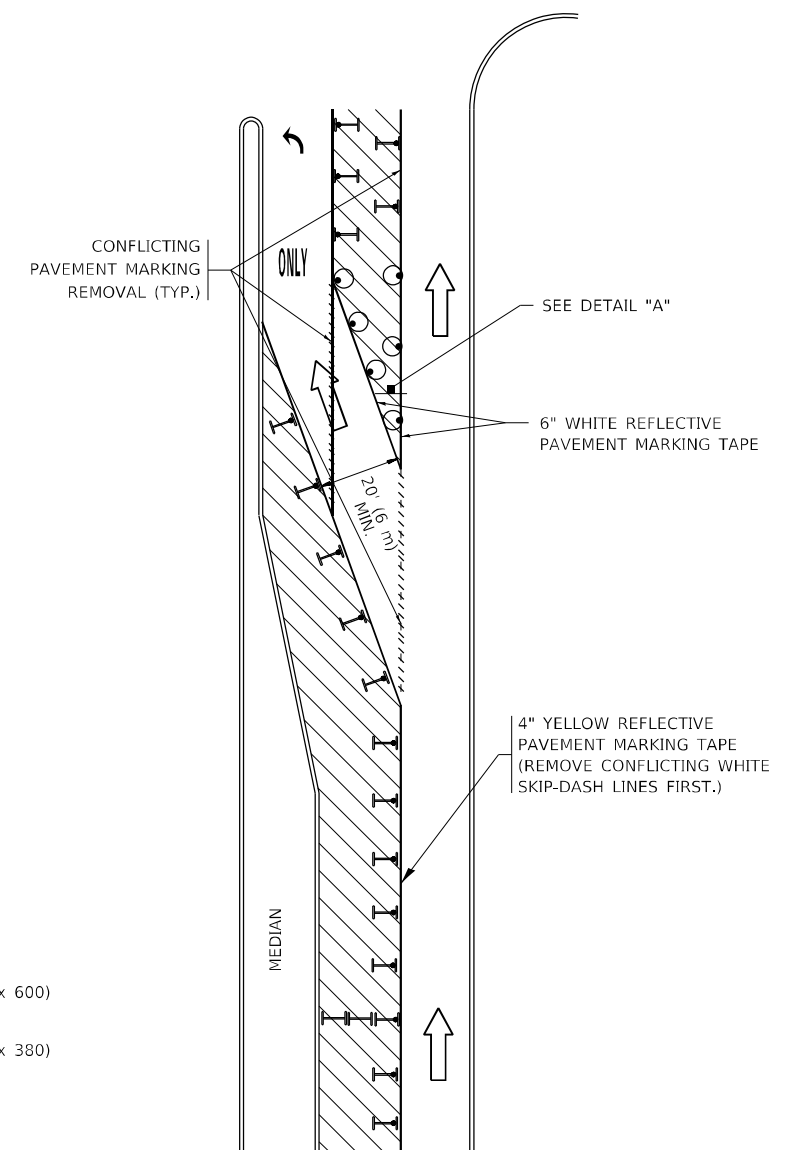
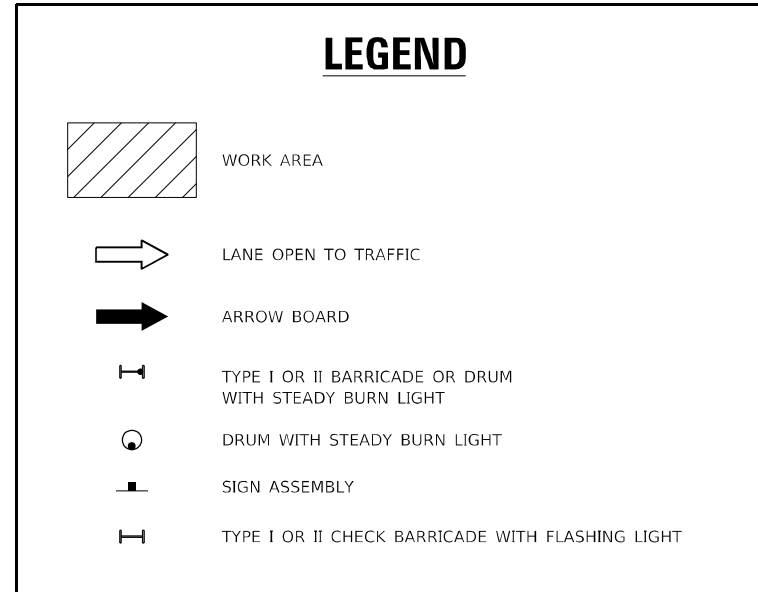
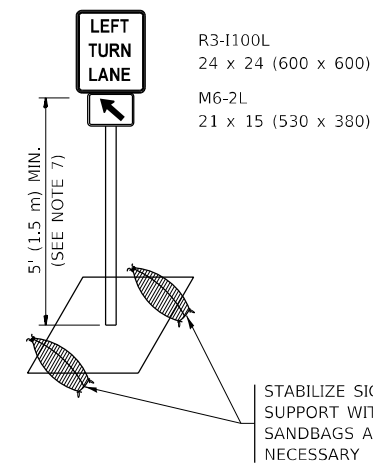


FIGURE 2



NOTES:

1. A) WHEN "L" IS \leq THE STORAGE LENGTH OF THE TURN LANE (AS SHOWN IN FIG. 1), USE FIGURE 1.
B) WHEN "L" IS $>$ THE STORAGE LENGTH OF THE TURN LANE OR THE TURN LANE IS WITHIN THE LANE CLOSURE, USE FIGURE 2.
2. CONES MAY BE SUBSTITUTED FOR BARRICADES OR DRUMS AT HALF THE SPACING DURING DAY OPERATIONS. CONES SHALL BE A MINIMUM OF 28 (710) IN HEIGHT.
3. LIGHTS WILL NOT BE REQUIRED ON BARRICADES OR DRUMS FOR DAY OPERATIONS. ALL LIGHTS SHALL BE MONODIRECTIONAL.
4. REFLECTIVE TEMPORARY PAVEMENT MARKINGS SHALL BE PLACED THROUGHOUT THE BARRICADED AREAS OF EACH TURN BAY AS SHOWN WHERE THE CLOSURE TIME IS GREATER THAN FOURTEEN (14) DAYS.
5. THIS APPLICATION ALSO APPLIES WHEN WORK IS BEING PERFORMED IN THE RIGHT LANE(S) AND THE RIGHT TURN BAY IS TO REMAIN OPEN. UNDER THIS CONDITION, "RIGHT TURN LANE" R3-1100R 24 x 24 (600 x 600) AND M6-2R 21 x 15 (530 x 380) SHALL BE USED.
6. THESE CONTROLS SHALL SUPPLEMENT MAINLINE TRAFFIC CONTROL FOR LANE CLOSURES.
7. THE SIGNS SHALL BE MOUNTED ABOVE THE BARRICADES/DRUMS ON SEPARATE SIGN SUPPORTS THAT MEET NCHRP 350 OR MASH REQUIREMENTS.
8. TRAFFIC CONTROL AND PROTECTION AT TURN BAYS (TO REMAIN OPEN TO TRAFFIC) SHALL BE INCLUDED IN THE COST OF SPECIFIED TRAFFIC CONTROL STANDARDS OR ITEMS.



DETAIL A

All dimensions are in inches (millimeters) unless otherwise shown.

MODEL: Default
FILE NAME: p:\pub\amr\room.dwg
PROJECT: 13520\CADDData\Design\Disc5.dgn
PROJECT: 13520\CADDData\Design\Disc5.dgn

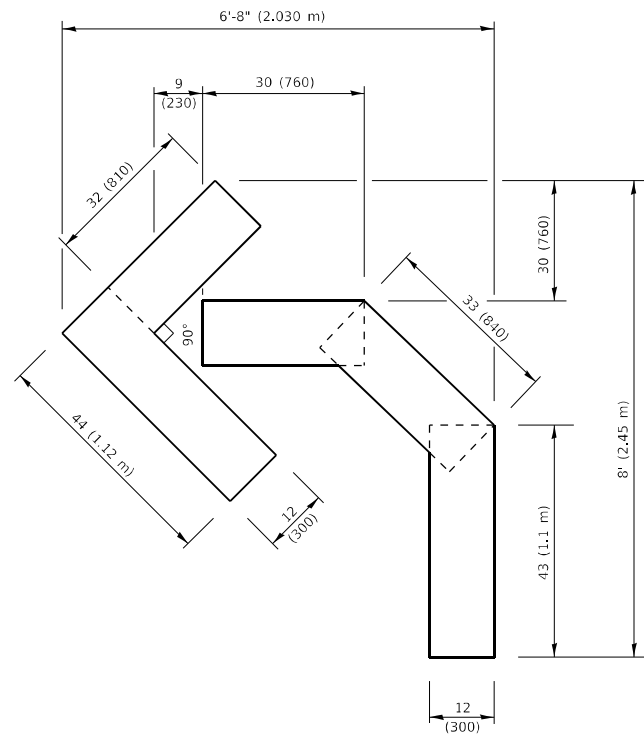
USER NAME = khans	DESIGNED - T. RAMMACHER 09-08-94	REVISED - R. BORO 09-14-09
	DRAWN - A. HOUSEH 11-07-95	REVISED - A. SCHUETZE 07-01-13
PLOT SCALE = 100,0000' / in.	CHECKED - A. HOUSEH 10-12-96	REVISED - A. SCHUETZE 09-15-16
PLOT DATE = 3/4/2021	DATE - T. RAMMACHER 01-06-00	REVISED -

**STATE OF ILLINOIS
DEPARTMENT OF TRANSPORTATION**

**TRAFFIC CONTROL AND PROTECTION AT TURN BAYS
(TO REMAIN OPEN TO TRAFFIC)**

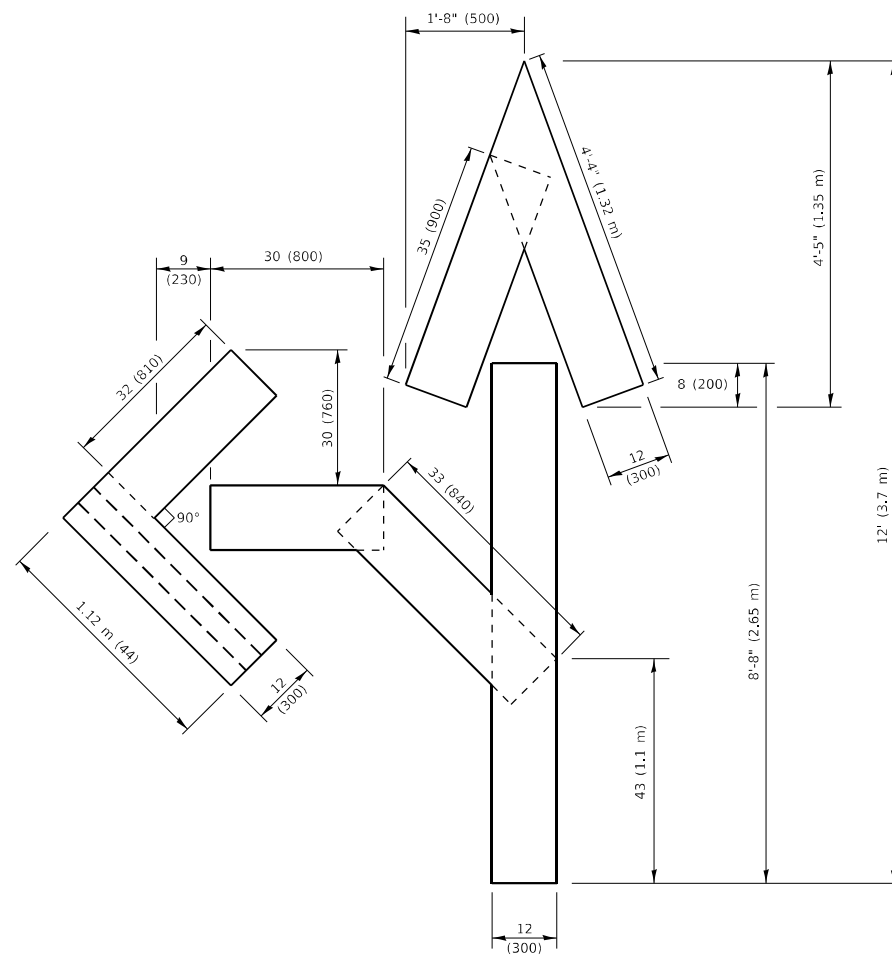
SCALE: NONE SHEET 1 OF 1 SHEETS STA. TO STA.

F.A.U. RTE.	SECTION	COUNTY	TOTAL SHEETS	SHEET NO.
3520	2020-135-R5&SW	COOK	23	19
TC-14		CONTRACT NO.62M13		
ILLINOIS FED. AID PROJECT				



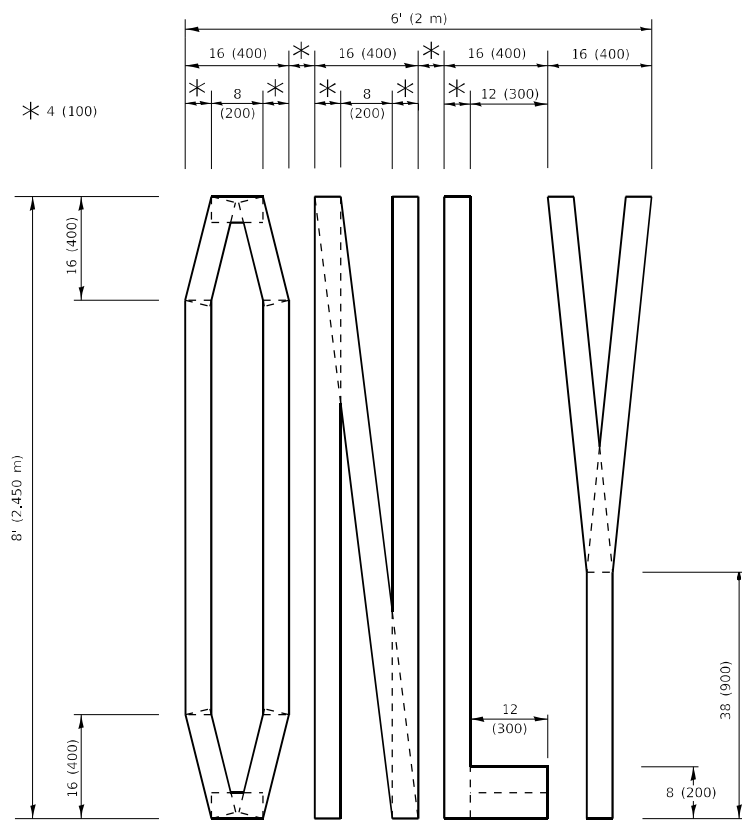
QUANTITY

4 (100) LINE = 45.5 ft. (13.9 m)
15.2 sq. ft. (1.41 sq. m)



QUANTITY

4 (100) LINE = 82.5 ft. (25.1 m)
27.5 sq. ft. (2.53 sq. m)

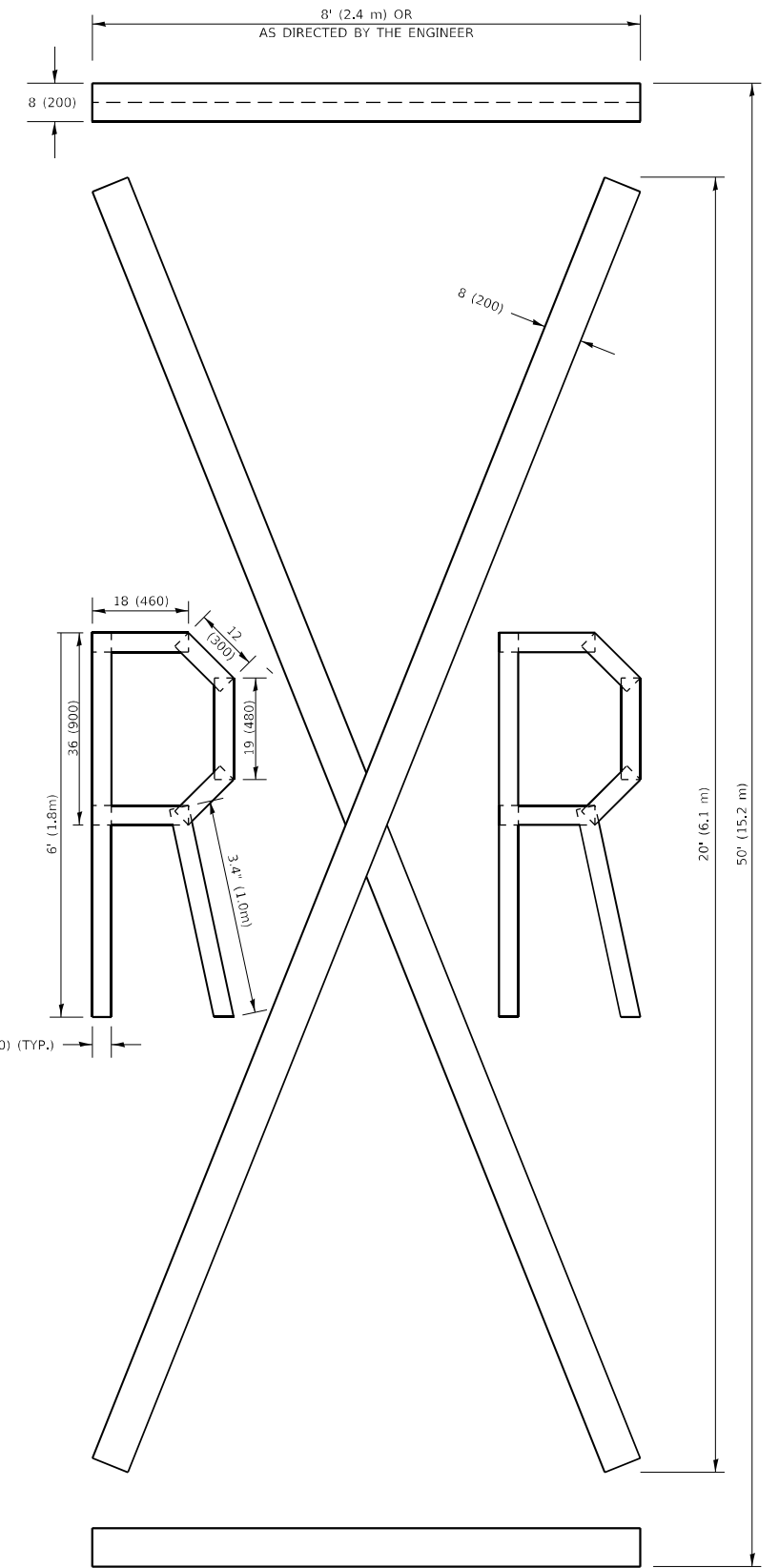


QUANTITY

4 (100) LINE = 64.1 ft. (19.5 m)
21.4 sq. ft. (1.99 sq. m)

NOTE:

ALL QUANTITIES OF PLACEMENT ARE REPRESENTED IN LINEAR FEET OF 4" LINES TO MATCH THE 4" TEMPORARY TAPE PAY ITEM AND REPRESENTS THE TOTAL QUANTITY OF 4" TAPE REQUIRED.



QUANTITY

4 (100) LINE = 225.9 ft. (68.9 m)
75.3 sq. ft. (6.99 sq. m)

All dimensions are in inches (millimeters) unless otherwise shown.

MODEL: Default
FILE NAME: p:\illinois\pav\pww\DOT\Documents\DOT Office\Drawings\1\Projects\13520\CADD\Drawings\Design\DRS54.dwg

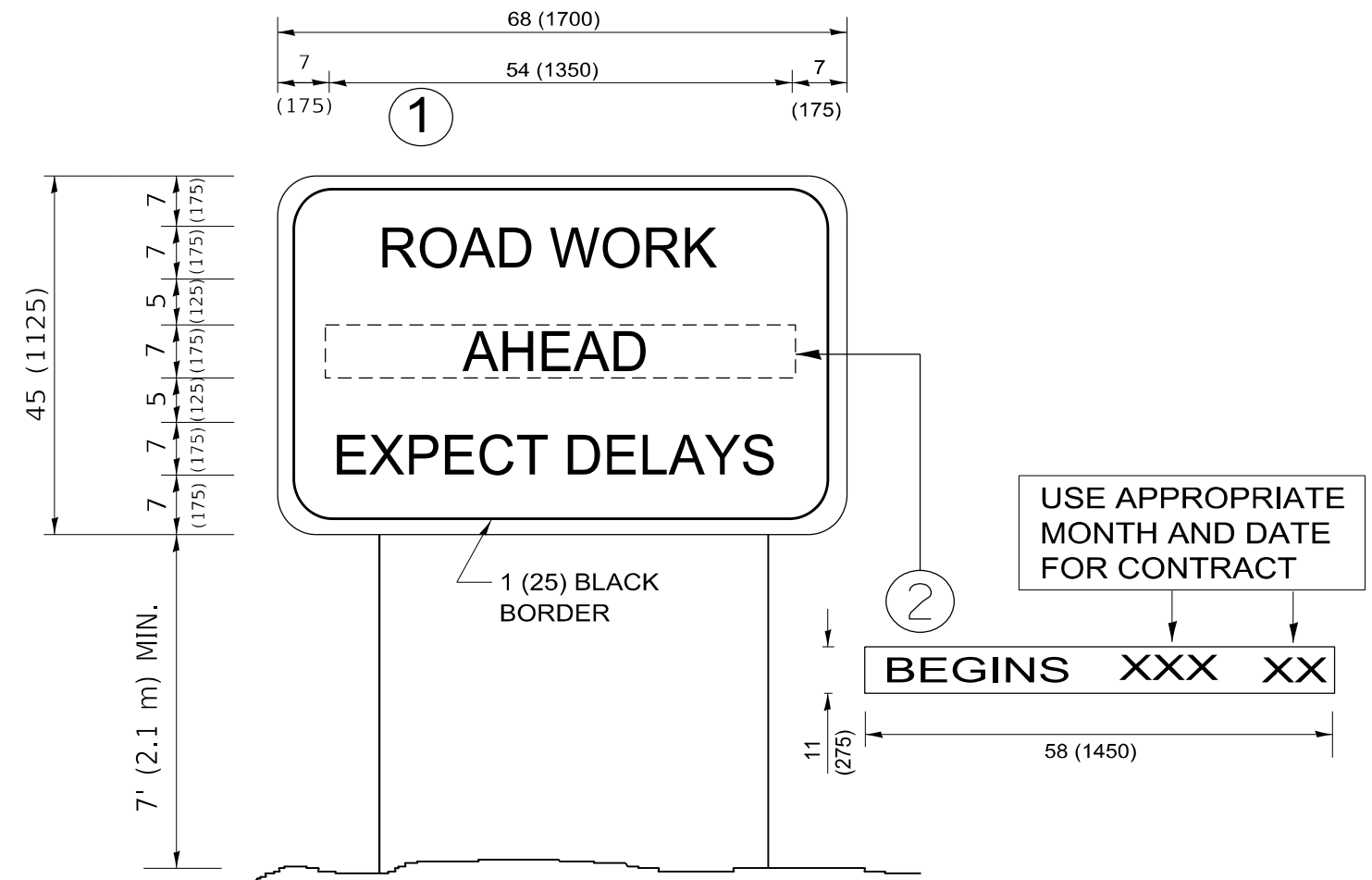
USER NAME = khans	DESIGNED -	REVISED - T. RAMMACHER 03-02-98
	DRAWN -	REVISED - E. GOMEZ 08-28-00
PLOT SCALE = 100,0000' / in.	CHECKED -	REVISED - E. GOMEZ 08-28-00
PLOT DATE = 3/4/2021	DATE - 09-18-94	REVISED - A. SCHUETZE 09-15-16

**STATE OF ILLINOIS
DEPARTMENT OF TRANSPORTATION**

SHORT TERM PAVEMENT MARKING LETTERS AND SYMBOLS

SCALE: NONE SHEET 1 OF 1 SHEETS STA. TO STA.

F.A.U. RTE.	SECTION	COUNTY	TOTAL SHEETS	SHEET NO.
3520	2020-135-RS&SW	COOK	23	20
TC-16		CONTRACT NO.62M13		
ILLINOIS		FED. AID PROJECT		



NOTES:

1. USE BLACK LETTERING ON ORANGE BACKGROUND.
2. ERECT SIGNS IN ADVANCE OF THE LOCATION FOR THE "ROAD CONSTRUCTION AHEAD" SIGN AT LOCATIONS AS DIRECTED BY THE ENGINEER.
3. ERECT SIGN ① WITH INSTALLED PANEL 2 ② ONE WEEK PRIOR TO THE START OF CONSTRUCTION.
4. REMOVE PANEL ② SOON AFTER THE START OF CONSTRUCTION.
5. SEE SPECIAL PROVISION FOR "TEMPORARY INFORMATION SIGNING" FOR ADDITIONAL INFORMATION.
6. ONE SIGN ASSEMBLY EQUALS 25.70 SQ. FT. (2.3 SQ. M.)
7. SHALL BE PAID FOR AS TEMPORARY INFORMATION SIGNING.

ALL DIMENSIONS ARE IN INCHES (MILLIMETERS) UNLESS OTHERWISE SHOWN.

MODEL: Default
 FILE NAME: p:\pub\mroom.edu\illinois.gov\PWIDOT\Documents\IDOT_Office\Design\1\Project\ID133520\CADD\Design\Design\DRS54.dgn

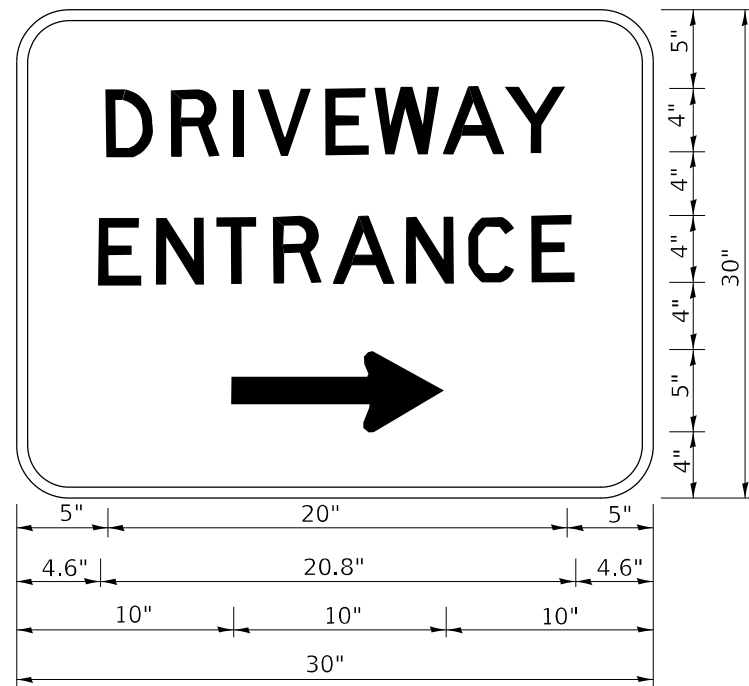
USER NAME = khans	DESIGNED -	REVISED - R. MIRS 09-15-97
	DRAWN -	REVISED - R. MIRS 12-11-97
PLOT SCALE = 100,0000 ' / in.	CHECKED -	REVISED - T. RAMMACHER 02-02-99
PLOT DATE = 3/4/2021	DATE -	REVISED - C. JUCIUS 01-31-07

**STATE OF ILLINOIS
DEPARTMENT OF TRANSPORTATION**

**ARTERIAL ROAD
INFORMATION SIGN**

SCALE: NONE SHEET 1 OF 1 SHEETS STA. TO STA.

F.A.U. RTE.	SECTION	COUNTY	TOTAL SHEETS	SHEET NO.
3520	2020-135-R5&SW	COOK	23	21
TC-22		CONTRACT NO.62M13		
ILLINOIS FED. AID PROJECT				



3.0" RADIUS, 0.5" BORDER, WHITE ON GREEN; REFLECTORIZED
 "DRIVEWAY" D; "ENTRANCE" D; STANDARD ARROW CUSTOM 12.0" x 5.0"

NOTES:

1. HALF OF THE SIGNS WILL REQUIRE A LEFT HAND FACING ARROW.
2. TWO SIGNS SHALL BE USED AT EACH COMMERCIAL ENTRANCE PLACED BACK-TO-BACK: ONE WITH A RIGHT HAND ARROW (SHOWN) SHALL BE PLACED ON THE NEAR RIGHT SIDE THE DRIVEWAY AND ONE WITH A LEFT HAND ARROW SHALL BE PLACED ON THE FAR LEFT SIDE OF THE DRIVEWAY.
3. SIGNS TO BE PAID FOR AS ITEM "TEMPORARY INFORMATION SIGNING".

MODEL: Default
 FILE NAME: p:\u0000\room\dot\illinois\gov\pww\DOT\Documents\DOT_Offices\Distrefc_1\Project\13520\CADD\Data\Design\Distrefc.dgn

USER NAME = khans	DESIGNED -	REVISED - C. JUCIUS 02-15-07
	DRAWN -	REVISED -
PLOT SCALE = 100,0000 ' / in.	CHECKED -	REVISED -
PLOT DATE = 3/4/2021	DATE -	REVISED -

**STATE OF ILLINOIS
 DEPARTMENT OF TRANSPORTATION**

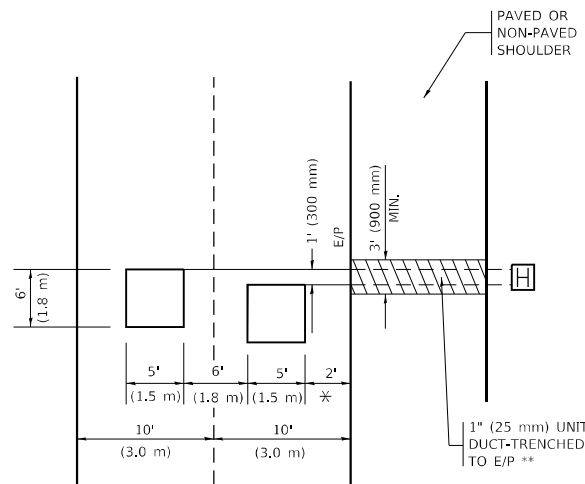
DRIVEWAY ENTRANCE SIGNING

SCALE: NONE SHEET 1 OF 2 SHEETS STA. TO STA.

F.A.U. RTE.	SECTION	COUNTY	TOTAL SHEETS	SHEET NO.
3520	2020-135-R5&SW	COOK	23	22
TC-26		CONTRACT NO.62M13		
ILLINOIS		FED. AID PROJECT		

LOOPS NEXT TO SHOULDERS

PROVIDE A PAVEMENT REPLACEMENT NOTE WHICH SHOULD EQUAL 3' (900 mm) X WIDTH OF PAVED SHOULDER.

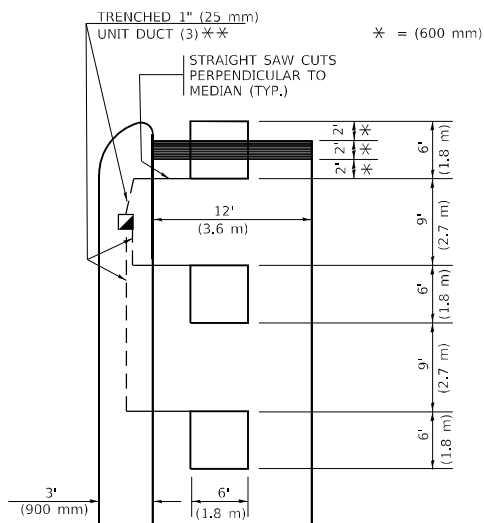


* = (600 mm)

** UNIT DUCT IS TO BE SHOWN ON PLAN SHEETS BUT SHALL NOT BE INCLUDED IN THE PAY ITEMS.

LEFT TURN LANES WITH MEDIANS
VOLUME DENSITY ("FAR OUT" DETECTION)
ON SAME APPROACH
(PROTECTED / PERMITTED LEFT TURN PHASING)

HANDHOLE LOCATION MAY VARY DEPENDING ON GEOMETRICS AND DESIGN OF TRAFFIC SIGNALS. HEAVY-DUTY HANDHOLES TO BE USED WHEN THE MEDIAN IS MOUNTABLE. REFER TO STANDARD 814001 TO ENSURE THAT HANDHOLE FITS IN MEDIAN.

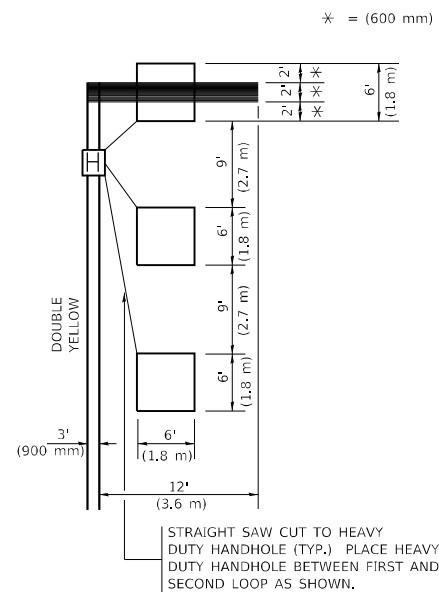


* = (600 mm)

** UNIT DUCT IS TO BE SHOWN ON PLAN SHEETS BUT SHALL NOT BE INCLUDED IN THE PAY ITEMS.

NOTE: DUAL LEFT TURNS NOT SHOWN REFER TO PLAN SHEET FOR DETECTOR LOOP REPLACEMENT

LEFT TURN LANES WITHOUT MEDIANS
VOLUME DENSITY ("FAR OUT" DETECTION)
ON SAME APPROACH
(PROTECTED / PERMITTED LEFT TURN PHASING)



* = (600 mm)

NOTE: DUAL LEFT TURNS NOT SHOWN REFER TO PLAN SHEET FOR DETECTOR LOOP REPLACEMENT

NOTES:

VEHICLES LOOP DETECTORS

- * ALL LEAD IN CABLE SHALL BE TWO CONDUCTOR NO. 14 TWISTED, SHIELDED.
- * EACH DETECTOR LOOP SHALL HAVE ITS OWN SAW CUT FROM THE LOOP TO THE EDGE OF PAVEMENT OR TO A HANDHOLE IN THE PAVEMENT.
- * EACH DETECTOR LOOP SHALL HAVE ITS OWN ONE INCH (25 mm) UNIT DUCT BETWEEN THE EDGE OF PAVEMENT AND THE FIRST HANDHOLE OR JUNCTION BOX. EACH UNIT DUCT RUN SHALL BE SHOWN ON THE PLANS BY THE DESIGNER, BUT SHALL NOT BE PAID FOR SEPARATLY. THIS ITEM IS INCIDENTAL TO THE PAY ITEM FOR DETECTOR LOOPS.
- * ONE DIMENSION OF ALL DETECTOR LOOPS SHALL BE SIX FEET (1.8 m)
- * EACH LANE OF NON-LOCKING, PRESENCE DETECTION AND EACH LANE OF A DOUBLE LEFT TURN LANE REQUIRES A SEPARATE INDUCTIVE LOOP DETECTOR AND LEAD IN CABLE.
- * WHEN NON-LOCKING, PRESENCE DETECTION IS USED, MORE THAN ONE LOOP PER LANE IS REQUIRED BEHIND THE STOP BAR (i.e. 1-1/2, 1-3/4, 2).
- * WHEN SYSTEM LOOPS ARE REQUIRED ON AN APPROACH OF AN INTERSECTION, THE LOOPS USED FOR VOLUME DENSITY AND INTERSECTION TIMING SHALL ALSO BE USED AS SYSTEM DETECTORS. EACH ONE OF THESE TYPE OF LOOPS REQUIRES A SEPARATE TWO CONDUCTOR NO. 14 TWISTED SHIELDED CABLE AND A SEPARATE INDUCTIVE LOOP DETECTOR WHEN NEW CONTROLLERS ARE UTILIZED. THE DESIGNER SHALL LABEL THESE TYPES OF LOOPS AS "INTERSECTION AND SAMPLING (SYSTEM) DETECTORS" ON THE SIGNAL LAYOUT, THE INTERCONNECT PLAN AND THE SYSTEM CABLE PLAN. WHEN AN EXISTING CONTROLLER IS UTILIZED FOR THIS TYPE OF DETECTION, THE PAY ITEM "INDUCTIVE LOOP DETECTOR WITH SYSTEM OUTPUT" SHOULD BE USED.

PLACEMENT OF DETECTORS

THE FOLLOWING FIGURES REPRESENT THE MOST COMMON DETECTOR LOOP LOCATIONS AND SIZES. ADJUSTMENTS WILL BE NECESSARY FOR SPECIFIC GEOMETRIC CONSIDERATIONS.

LOCATIONS AND DEMENSIONS OF DETECTOR LOOPS ARE REQUIRED ON ALL SIGNAL LAYOUT PLAN SHEETS.

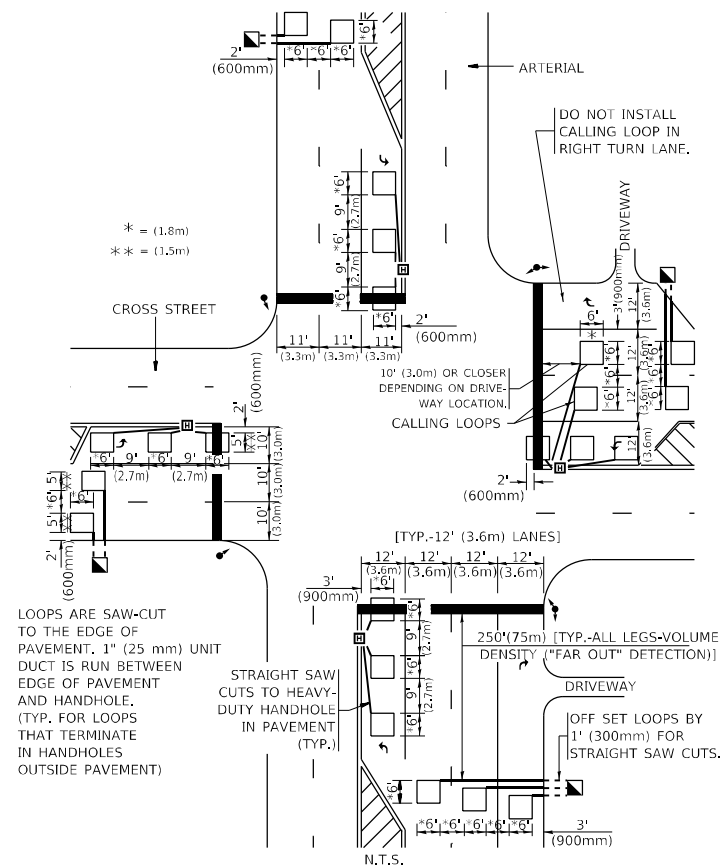
"FAR OUT" DETECTION REFERS TO LOCKING, PRESENCE TYPE DETECTION LOCATED IN THRU LANES, RIGHT TURN LANES, AND RIGHT TURN LANE TAPER AREAS (IF APPLICABLE), USUALLY 250' (75 m) IN ADVANCE OF STOP BARS. "UPTIGHT" DETECTION REFERS TO NON-LOCKING PRESENCE TYPE DETECTION LOCATED IN ALL LANES AND 10'-15' (3.0 m-4.5 m) BEHIND THE CROSSING STREET'S EDGE OF PAVEMENT EXTENDED.

NOTE:

ALL DETAILS AND NOTES SHOWN ARE FROM THE I.D.O.T. DISTRICT 1 TRAFFIC SIGNAL DESIGN GUIDELINES DATED JANUARY 1995

THIS DRAWING HAS BEEN PREPARED TO ASSIST THE RESIDENT ENGINEER FOR ALL ROADWAY RESURFACING OR S.M.A.R.T. PROJECTS WHERE THE DIMENSIONS ARE NOT SHOWN ON THE PLANS AND THE FINAL LOCATIONS FOR CROSSWALKS OR STOP BARS ARE NOT DETERMINED.

ARTERIAL-VOLUME DENSITY ("FAR OUT" DETECTION)
CROSS STREET-NON VOLUME DENSITY ("FAR OUT" DETECTION)



* = (1.8m)
 ** = (1.5m)

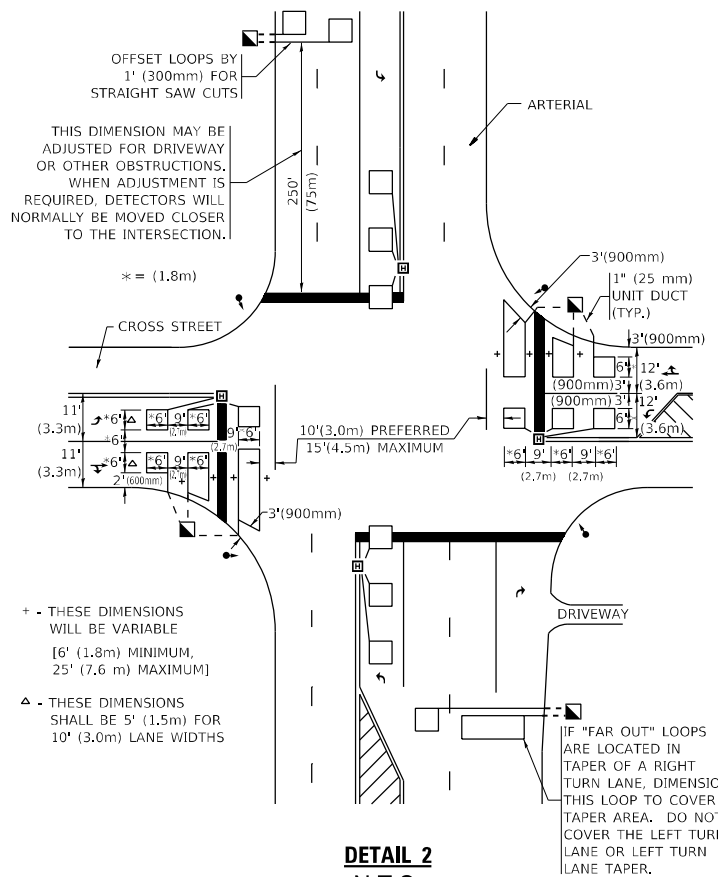
LOOPS ARE SAW-CUT TO THE EDGE OF PAVEMENT. 1" (25 mm) UNIT DUCT IS RUN BETWEEN EDGE OF PAVEMENT AND HANDHOLE. (TYP. FOR LOOPS THAT TERMINATE IN HANDHOLES OUTSIDE PAVEMENT)

STRAIGHT SAW CUTS TO HEAVY-DUTY HANDHOLE IN PAVEMENT (TYP.)

[TYP.-12' (3.6m) LANES]
 250' (75m) [TYP.-ALL LEGS-VOLUME DENSITY ("FAR OUT" DETECTION)]
 DRIVEWAY
 OFF SET LOOPS BY 1' (300mm) FOR STRAIGHT SAW CUTS.

DETAIL 1
 N.T.S.

ARTERIAL-VOLUME DENSITY ("FAR OUT" DETECTION)
CROSS STREET-NON VOLUME DENSITY ("UPTIGHT" PRESENCE DETECTION)



OFFSET LOOPS BY 1' (300mm) FOR STRAIGHT SAW CUTS
 THIS DIMENSION MAY BE ADJUSTED FOR DRIVEWAY OR OTHER OBSTRUCTIONS. WHEN ADJUSTMENT IS REQUIRED, DETECTORS WILL NORMALLY BE MOVED CLOSER TO THE INTERSECTION.

* = (1.8m)

+ - THESE DIMENSIONS WILL BE VARIABLE [6' (1.8m) MINIMUM, 25' (7.6 m) MAXIMUM]

Δ - THESE DIMENSIONS SHALL BE 5' (1.5m) FOR 10' (3.0m) LANE WIDTHS

IF "FAR OUT" LOOPS ARE LOCATED IN TAPER OF A RIGHT TURN LANE, DIMENSION THIS LOOP TO COVER TAPER AREA. DO NOT COVER THE LEFT TURN LANE OR LEFT TURN LANE TAPER.

DETAIL 2
 N.T.S.

STATE OF ILLINOIS
DEPARTMENT OF TRANSPORTATION

DISTRICT 1 - DETECTOR LOOP INSTALLATION
DETAILS FOR ROADWAY RESURFACING

SCALE: NONE SHEET 1 OF 1 SHEETS STA. TO STA.

F.A.U. RTE.	SECTION	COUNTY	TOTAL SHEETS	SHEET NO.
3520	2020-135-R5&SW	COOK	23	23
TS-07		CONTRACT NO.62M13		
ILLINOIS		FED. AID PROJECT		