

STATE OF ILLINOIS
DEPARTMENT OF TRANSPORTATION

| F.A. RTE. | SECTION | COUNTY | TOTAL SHEETS | SHEET NO. |
|-----------|---------------------------|----------|--------------------|-----------|
| VARIOUS | D3 LIGHTING REPAIR 2021-4 | VARIOUS | 3 | 1 |
| | | ILLINOIS | CONTRACT NO. 66L64 | |

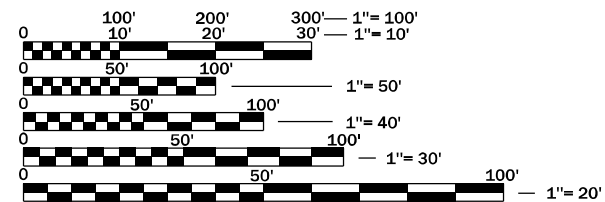
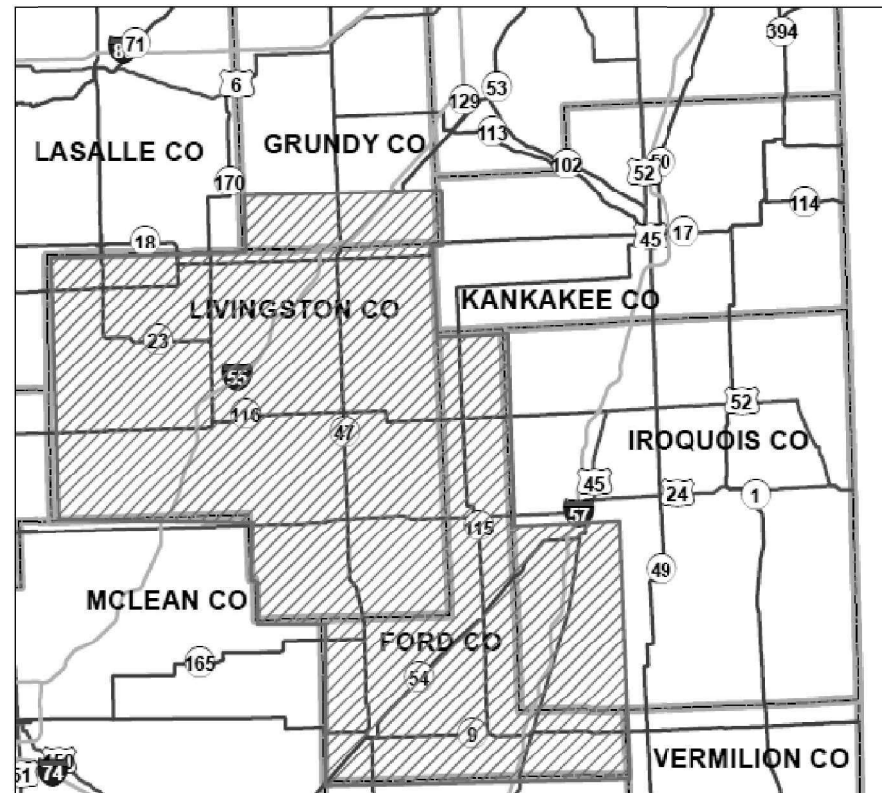
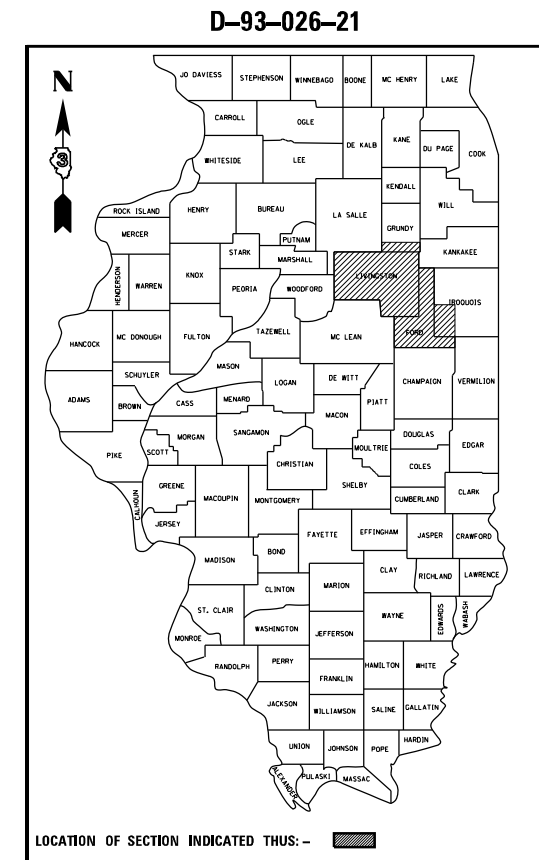
INDEX OF SHEETS

1. COVER SHEET
2. GENERAL NOTES & HIGHWAY STANDARDS
3. SUMMARY OF QUANTITIES

PROPOSED
HIGHWAY PLANS

VARIOUS ROUTES
SECTION D3 LIGHTING REPAIR 2021-4
PROJECT
AREA FOUR ON CALL LIGHTING REPAIR
VARIOUS COUNTIES

C-93-060-21



FULL SIZE PLANS HAVE BEEN PREPARED USING STANDARD ENGINEERING SCALES. REDUCED SIZED PLANS WILL NOT CONFORM TO STANDARD SCALES. IN MAKING MEASUREMENTS ON REDUCED PLANS, THE ABOVE SCALES MAY BE USED.

J.U.L.I.E.
JOINT UTILITY LOCATION INFORMATION FOR EXCAVATION
1-800-892-0123
OR 811

PROJECT ENGINEER: YOGESH PATEL P.E.
UNIT CHIEF: DAN DEVINE P.E.
TOWNSHIPS: VARIOUS
DISTRICT 3 NO. (815) 434-6131
CONTRACT NO. 66L64

STATE OF ILLINOIS
DEPARTMENT OF TRANSPORTATION

SUBMITTED February 05, 20 21

[Signature]
REGIONAL ENGINEER

March 19, 2021
[Signature]
ENGINEER OF DESIGN AND ENVIRONMENT

March 19, 2021
[Signature]
DIRECTOR OF HIGHWAYS PROJECT IMPLEMENTATION

PRINTED BY THE AUTHORITY
OF THE STATE OF ILLINOIS

| | | | |
|-------------------|----------|--------|--------|
| CONSTRUCTION CODE | | | |
| STATE FUNDS | | | |
| 100% | | | |
| ROADWAY | | | |
| 0021 | | | |
| RURAL | | | |
| SEQ 01 | SEQ 02 | SEQ 03 | SEQ 04 |
| LIVINGSTON | IROQUOIS | FORD | GRUNDY |

| CODE NO. | ITEM | UNIT | TOTAL QUANTITY | SEQ 01 LIVINGSTON | SEQ 02 IROQUOIS | SEQ 03 FORD | SEQ 04 GRUNDY |
|----------|---|------|----------------|-------------------|-----------------|-------------|---------------|
| X7011834 | TRAFFIC CONTROL AND PROTECTION, CALL OUT WORK | EACH | 4 | 1 | 1 | 1 | 1 |
| XP000001 | JOURNEYMAN ELECTRICIAN | HOUR | 300 | 150 | 50 | 50 | 50 |
| XP000002 | APPRENTICE ELECTRICIAN | HOUR | 100 | 50 | 20 | 15 | 15 |
| XP000003 | JOURNEYMAN ELECTRICIAN (WEEKLY OVERTIME RATE) | HOUR | 25 | 10 | 5 | 5 | 5 |
| XP000004 | JOURNEYMAN ELECTRICIAN (SATURDAY OVERTIME RATE) | HOUR | 25 | 10 | 5 | 5 | 5 |
| XP000005 | JOURNEYMAN ELECTRICIAN (SUNDAY AND HOLIDAY OVERTIME RATE) | HOUR | 15 | 5 | 4 | 3 | 3 |
| XP000006 | APPRENTICE ELECTRICIAN (WEEKLY OVERTIME RATE) | HOUR | 25 | 10 | 5 | 5 | 5 |
| XP000007 | APPRENTICE ELECTRICIAN (SATURDAY OVERTIME RATE) | HOUR | 25 | 10 | 5 | 5 | 5 |
| XP000008 | APPRENTICE ELECTRICIAN (SUNDAY AND HOLIDAY OVERTIME RATE) | HOUR | 25 | 10 | 5 | 5 | 5 |
| XP000009 | PICK-UP TRUCK | HOUR | 200 | 100 | 40 | 30 | 30 |
| XP000010 | BUCKET TRUCK (LENGTH LESS THAN 35 FEET) | HOUR | 60 | 30 | 10 | 10 | 10 |
| XP000011 | BUCKET TRUCK (LENGTH 35 TO 65 FEET) | HOUR | 100 | 40 | 20 | 20 | 20 |

MODEL: Default
 FILE NAME: \\paulhammon.dot.ilinois.gov\PWDOT\Documents\DOT_Offices\District 3\Projects\0366L64\CADD\0366L64-Light-concr.dwg

| | | |
|------------------------------|------------|-----------|
| USER NAME = longneckerjh | DESIGNED - | REVISED - |
| | DRAWN - | REVISED - |
| PLOT SCALE = 100,0000' / in. | CHECKED - | REVISED - |
| PLOT DATE = 1/27/2021 | DATE - | REVISED - |

**STATE OF ILLINOIS
DEPARTMENT OF TRANSPORTATION**

SCALE: SHEET OF SHEETS STA. TO STA.

| | | | | |
|-----------|---------------------------|----------|--------------------|-----------|
| F.A. RTE. | SECTION | COUNTY | TOTAL SHEETS | SHEET NO. |
| VARIOUS | D3 LIGHTING REPAIR 2021-4 | VARIOUS | 3 | 3 |
| | | | CONTRACT NO. 66L64 | |
| | | ILLINOIS | | |