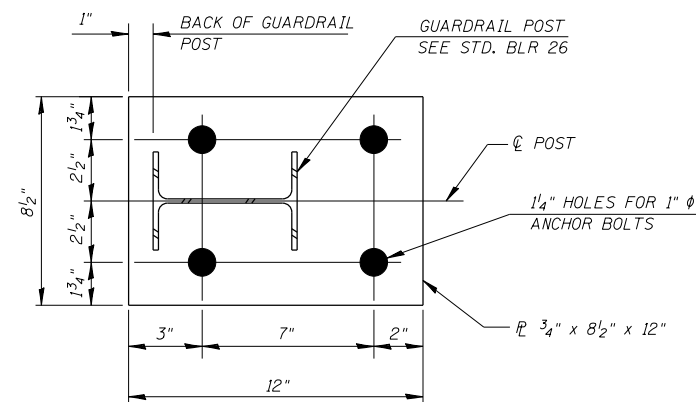


SECTION AT PROPOSED HEADWALL



ANCHOR PLATE 1

GUARD RAIL POST ATTACHMENT SCHEDULE

LOCATION	DIMENSION A	DIMENSION B	MOUNTING PLATES (NO. REQUIRED)	THREADED RODS IN HEADWALL (NO. REQUIRED)	GUARDRAIL POST (NO. REQUIRED)	GUARD RAIL POST LENGTH (FOOT)	STRONG POST GUARDRAIL ATTACHED TO CULVERT (FOOT)
2 NORTH 17.00' LT STA 9+93.50 TO STA 10+06.50	16'-0"	1'-0"	5	20	5	4'-2"	25
2 SOUTH 17.00' RT STA 9+93.50 TO STA 10+06.50	16'-0"	1'-0"	5	20	5	4'-7 1/2"	25
TOTALS			10	40	10		50

NOTES:

- FOR DETAILS OF GUARDRAIL ELEMENTS NOT SHOWN, SEE STANDARD 630101
- COST OF THREADED RODS, FLAT WASHERS, NUTS, ANCHOR PLATES, AND GUARDRAIL POSTS INCLUDED WITH THE COST OF STRONG POST GUARDRAIL ATTACHED TO CULVERT. REMOVAL OF EXISTING GUARD RAIL POSTS ATTACHED TO STRUCTURE INCLUDED IN THE COST FOR GUARDRAIL REMOVAL.

MODEL: Default
FILE NAME: H:\2459.1_ClarK Guardrail PE\land2\CADD\Sheets\2459.1-Culv2.dgn



JOB # = 2459.1	DESIGNED , JGY	REVISED , 04/08/2021
FILE NAME = 2459.1-Culv2.dgn	CHECKED , TSH	REVISED ,
PLOT DATE = 4/8/2021	DRAWN , TSH	REVISED ,
	CHECKED , MDC	REVISED ,

**CLARK COUNTY
GUARDRAIL IMPROVEMENTS**

**CULVERT EXTENSION DETAILS - LOCATION 2
STA 10+00.00**

SHEET 3 OF 3 SHEETS

F.A.S. RTE.	SECTION	COUNTY	TOTAL SHEETS	SHEET NO.
*	20-00277-01-GR	CLARK	23	19
* VARIOUS ROUTES			CONTRACT NO. 95891	

ILLINOIS FED. AID PROJECT