

MODEL Sheet 1  
 FILE NAME: p:\hanson\c-pw\benley.com\hanson-pw-01\Documents\09\09\01798\Usable Segments III - V - VNCAD\Rail\Usable Segment V\Sheet\06\01.798-SQ-USV-001.dgn

CODE NO.	ITEM	UNIT	TOTAL QUANTITY	COOK ST. UPRR BRIDGE 084-9964	COOK ST. NSRR BRIDGE 084-9965	SOUTH GRAND UPRR BRIDGE 084-9966	SOUTH GRAND NSRR BRIDGE 084-9967	RETAINING WALLS	ROAD	RAILROAD
				0008	0010	0008	0010	0044	0004	0044
20100500	TREE REMOVAL, ACRES	ACRE	0.75						0.25	0.50
20200100	EARTH EXCAVATION	CU YD	24892						4332	20560
20200200	ROCK EXCAVATION	CU YD	52						52	
20400800	FURNISHED EXCAVATION	CU YD	36495							36495
20800150	TRENCH BACKFILL	CU YD	1349						463	886
20900110	POROUS GRANULAR BACKFILL	CU YD	107						107	
25000110	SEEDING, CLASS 1A	ACRE	7.25						1.25	6.00
25000400	NITROGEN FERTILIZER NUTRIENT	POUND	644						113	531
25000500	PHOSPHORUS FERTILIZER NUTRIENT	POUND	644						113	531
25000600	POTASSIUM FERTILIZER NUTRIENT	POUND	644						113	531
25000700	AGRICULTURAL GROUND LIMESTONE	TON	14.3						2.5	11.8
25100115	MULCH, METHOD 2	ACRE	2.75						1.25	1.50
25100125	MULCH, METHOD 3	ACRE	3.00							3.00
25100630	EROSION CONTROL BLANKET	SQ YD	7265							7265

\* PAY ITEM REQUIRES A SPECIAL PROVISION  
 Δ SPECIALTY ITEMS



USER NAME = Pop00275	DESIGNED - DJP	REVISED - 4/8/2021
PLOT SCALE = 0.17' / in.	DRAWN - DJP	REVISED -
PLOT DATE = 4/7/2021	CHECKED - MNM	REVISED -
	DATE - 1/18/2021	REVISED -

STATE OF ILLINOIS  
 DEPARTMENT OF TRANSPORTATION

SPRINGFIELD RAIL IMPROVEMENTS PROJECT  
 SPRINGFIELD, SANGAMON COUNTY, ILLINOIS  
 SUMMARY OF QUANTITIES - 1

F.A.P. RTE.	SECTION	COUNTY	TOTAL SHEETS	SHEET NO.
*	19-00488-00-BR	SANGAMON	347	5
09L0179B		CONTRACT NO. 93747		
* 7985A & 7989		ILLINOIS FED. AID PROJECT		

SCALE: SHEET 1 OF 18 SHEETS STA. TO STA.

FINAL



CODE NO.	ITEM	UNIT	TOTAL QUANTITY	COOK ST. UPRR BRIDGE 084-9964	COOK ST. NSRR BRIDGE 084-9965	SOUTH GRAND UPRR BRIDGE 084-9966	SOUTH GRAND NSRR BRIDGE 084-9967	RETAINING WALLS	ROAD	RAILROAD
				0008	0010	0008	0010	0044	0004	0044
51100100	SLOPE WALL 4 INCH	SQ YD	507					507		
51500100	NAME PLATES	EACH	4	1	1	1	1			
51603000	DRILLED SHAFT IN SOIL	CU YD	1058.3	80.6	198.1	207.9	194.3	377.4		
51604000	DRILLED SHAFT IN ROCK	CU YD	700.3	31.4	148.3	179.0	179.0	162.6		
52200020	TEMPORARY SOIL RETENTION SYSTEM	SQ FT	12870	941	1196				6588	4145
52200265	SECANT LAGGING	CU FT	5246			1359	827	3060		
52200900	CONCRETE STRUCTURES (RETAINING WALL)	CU YD	233.1					233.1		
54213657	PRECAST REINFORCED CONCRETE FLARED END SECTIONS 12"	EACH	4							4
54213663	PRECAST REINFORCED CONCRETE FLARED END SECTIONS 18"	EACH	15							15
550A0050	STORM SEWERS, CLASS A, TYPE 1 12"	FOOT	126						38	88
550A0070	STORM SEWERS, CLASS A, TYPE 1 15"	FOOT	572							572
550A0090	STORM SEWERS, CLASS A, TYPE 1 18"	FOOT	331							331
550A0360	STORM SEWERS, CLASS A, TYPE 2 15"	FOOT	60						60	
550A0380	STORM SEWERS, CLASS A, TYPE 2 18"	FOOT	312						312	

\* PAY ITEM REQUIRES A SPECIAL PROVISION  
 Δ SPECIALTY ITEMS

MODEL: Sheet 5  
 FILE NAME: p:\1\hanson\hnc\paw\benfley\com\hanson-ctc-01\Documents\09\09\01798\1\Usable\_Segments\_III - V - V - VNCAD\Rail\Usable\_Segments\_VI\Sheet\09\01798-500-USV-001.dgn



USER NAME = Pop00275	DESIGNED - DJP	REVISED - 4/8/2021
PLOT SCALE = 0.17' / in.	DRAWN - DJP	REVISED -
PLOT DATE = 4/7/2021	CHECKED - MNM	REVISED -
	DATE - 1/18/2021	REVISED -

STATE OF ILLINOIS  
 DEPARTMENT OF TRANSPORTATION

SPRINGFIELD RAIL IMPROVEMENTS PROJECT  
 SPRINGFIELD, SANGAMON COUNTY, ILLINOIS  
 SUMMARY OF QUANTITIES - 5

F.A.P. RTE.	SECTION	COUNTY	TOTAL SHEETS	SHEET NO.
*	19-00488-00-BR	SANGAMON	347	9
	09L0179B	CONTRACT NO. 93747		
* 7985A & 7989		ILLINOIS FED. AID PROJECT		

SCALE: SHEET 5 OF 18 SHEETS STA. TO STA.

FINAL

MODEL: Sheet 6  
 FILE NAME: \\w\hanson\c\pw.kentley\com\hanson-pw-01\Documents\09L01798\Usable Segments III - V - V\CD\Rail\Usable Segment V\Sheet\09L01798-S00-USV.d01.dgn

CODE NO.	ITEM	UNIT	TOTAL QUANTITY	COOK ST. UPRR BRIDGE 084-9964	COOK ST. NSRR BRIDGE 084-9965	SOUTH GRAND UPRR BRIDGE 084-9966	SOUTH GRAND NSRR BRIDGE 084-9967	RETAINING WALLS	ROAD	RAILROAD
				0008	0010	0008	0010	0044	0004	0044
550A0410	STORM SEWERS, CLASS A, TYPE 2 24"	FOOT	498						498	
• 55100500	STORM SEWER REMOVAL 12"	FOOT	134							134
• 55100700	STORM SEWER REMOVAL 15"	FOOT	24						24	
• 55100900	STORM SEWER REMOVAL 18"	FOOT	20						20	
• 55101100	STORM SEWER REMOVAL 21"	FOOT	26						26	
• 55101200	STORM SEWER REMOVAL 24"	FOOT	250						250	
• 55200900	STORM SEWERS JACKED IN PLACE, 24"	FOOT	44						44	
• 55201600	STORM SEWERS JACKED IN PLACE, 48"	FOOT	102							102
• 55201700	STORM SEWERS JACKED IN PLACE, 54"	FOOT	91							91
Δ • 56100800	WATER MAIN 10"	FOOT	296							296
58000100	MEMBRANE WATERPROOFING	SQ FT	6899		4081		2818			
58600101	GRANULAR BACKFILL FOR STRUCTURES	CU YD	614	138	114	103	182	77		
58700300	CONCRETE SEALER	SQ FT	25374	3696	3364	4088	2897	4257	7072	
59100100	GEOCOMPOSITE WALL DRAIN	SQ YD	331	74	78	61	85	33		

\* PAY ITEM REQUIRES A SPECIAL PROVISION  
 Δ SPECIALTY ITEMS

FINAL



USER NAME = Pcp00275	DESIGNED - DJP	REVISED - Δ 4/8/2021
PLOT SCALE = 0.17' / 1".	DRAWN - DJP	REVISED -
PLOT DATE = 4/7/2021	CHECKED - MNM	REVISED -
	DATE - 1/18/2021	REVISED -

STATE OF ILLINOIS  
 DEPARTMENT OF TRANSPORTATION

SPRINGFIELD RAIL IMPROVEMENTS PROJECT  
 SPRINGFIELD, SANGAMON COUNTY, ILLINOIS  
 SUMMARY OF QUANTITIES - 6

F.A.P. RTE.	SECTION	COUNTY	TOTAL SHEETS	SHEET NO.
*	19-00488-00-BR	SANGAMON	347	10
	09L01798	CONTRACT NO.	93747	
* 7985A & 7989		ILLINOIS FED. AID PROJECT		

SCALE: SHEET 6 OF 18 SHEETS STA. TO STA.

MODEL: Sheet\_15  
 FILE NAME: s:\projects\hanson\p01\Documents\09L0179B\09L0179B-000-USV-001.dwg  
 V:\CAD\AutoCAD\Tables\_Segment\_VSheetD09010179B-000-USV-001.dwg

CODE NO.	ITEM	UNIT	TOTAL QUANTITY	COOK ST. UPRR BRIDGE 084-9964	COOK ST. NSRR BRIDGE 084-9965	SOUTH GRAND UPRR BRIDGE 084-9966	SOUTH GRAND NSRR BRIDGE 084-9967	RETAINING WALLS	ROAD	RAILROAD
				0008	0010	0008	0010	0044	0004	0044
• XX008949	FURNISHING AND ERECTING STRUCTURAL STEEL BRIDGE NO. 2	L SUM	1		1					
Δ • XX008952	LUMINAIRE, DECORATIVE ELECTROLUMINESCENT LIGHT TAPE	FOOT	344							344
• XX009183	FURNISHING AND ERECTING STRUCTURAL STEEL BRIDGE NO. 3	L SUM	1			1				
• XX009184	FURNISHING AND ERECTING STRUCTURAL STEEL BRIDGE NO. 4	L SUM	1				1			
Δ • XX009189	PUMP STATION ELECTRICAL WORK, NO. 1	L SUM	1							1
Δ • XX009190	PUMP STATION ELECTRICAL WORK, NO. 2	L SUM	1							1
Δ • XX009191	PUMP STATION MECHANICAL WORK, NO. 1	L SUM	1							1
Δ • XX009192	PUMP STATION MECHANICAL WORK, NO. 2	L SUM	1							1
• XX009193	PRECAST PRESTRESSED CONCRETE FASCIA BEAM, NO. 1	L SUM	1	1						
• XX009194	PRECAST PRESTRESSED CONCRETE FASCIA BEAM, NO. 3	L SUM	1			1				
Δ • XX009195	PUMPING STATION, NO. 1	L SUM	1							1
Δ • XX009196	PUMPING STATION, NO. 2	L SUM	1							1
Δ • XX009316	SEWER IN METAL LINER 48"	FOOT	88							88
Δ • XX009426	SEWER IN METAL LINER 54"	FOOT	85							85

\* PAY ITEM REQUIRES A SPECIAL PROVISION  
 Δ SPECIALTY ITEMS

USER NAME = Pop00275	DESIGNED - DJP	REVISED - Δ 4/8/2021
PLOT SCALE = 0.17' / in.	CHECKED - MNM	REVISED -
PLOT DATE = 4/7/2021	DATE - 1/18/2021	REVISED -

STATE OF ILLINOIS  
 DEPARTMENT OF TRANSPORTATION

SPRINGFIELD RAIL IMPROVEMENTS PROJECT  
 SPRINGFIELD, SANGAMON COUNTY, ILLINOIS  
 SUMMARY OF QUANTITIES - 15

F.A.P. RTE. 7	SECTION 19-00488-00-BR	COUNTY SANGAMON	TOTAL SHEETS 347	SHEET NO. 19
09L0179B	CONTRACT NO. 93747	* 7985A & 7989 ILLINOIS FED. AID PROJECT		

SCALE: SHEET 15 OF 18 SHEETS STA. TO STA.

FINAL











PIPE SCHEDULE

Table with columns: FROM STRUCTURE (NUMBER, INV ELEV), TO STRUCTURE (NUMBER, INV ELEV), CONSTRUCTION STAGE, and various pipe types (e.g., STORM SEWERS, SEWERS JACKED IN, PIPE UNDERDRAINS, PIPE DRAINS). Includes a network diagram showing pipe connections between structures and a 'COOK ST PUMP STATION'.

CONTINUED ON NEXT SHEET

FINAL

MODEL: Sheet\_10  
FILE: hanson\proj\hanson\proj\documents\09\09\09\01\798\Usable\_Segments\_III - V - V\CAD\Rail\Usable\_Segments\_V\SheetD0901.01\798-SC-LS-431\A001.dgn



Copyright Hanson Professional Services Inc. 2021

Revision table with columns: USER NAME, DESIGNED, DRAWN, PLOT SCALE, PLOT DATE, REVISED, and DATE. Includes dates like 4/8/2021 and 1/18/2021.

STATE OF ILLINOIS  
DEPARTMENT OF TRANSPORTATION

SPRINGFIELD RAIL IMPROVEMENTS PROJECT  
SPRINGFIELD, SANGAMON COUNTY, ILLINOIS  
SCHEDULE OF QUANTITIES - TRACK - 8

SCALE: SHEET 8 OF 9 SHEETS STA. TO STA.

Summary table with columns: F.A.P. RTE., SECTION, COUNTY, TOTAL SHEETS, SHEET NO., CONTRACT NO., and FED. AID PROJECT. Values include 09L0179B, SANGAMON, 347, 57, 93747.

				PIPE SCHEDULE																		
FROM STRUCTURE		TO STRUCTURE		CONSTRUCTION STAGE	550A0050	550A0070	550A0090	55201600	55201700	60108212	60108500	X1200107	60100915	X6012108	56100800	Z0057956	Z0057962	XX009316	XX009426	20800150	COMMENTS	
NUMBER	INV ELEV	NUMBER	INV ELEV		FOOT	FOOT	FOOT	FOOT	FOOT	FOOT	FOOT	FOOT	FOOT	FOOT	FOOT	FOOT	FOOT	FOOT	FOOT	FOOT	CU YD	
Cook St Pump Station	591.29	R326	586.50	1											241							
So. Grand Pump Station	596.89	R367	596.50	1											55							
New Elbow	Exist	R315	599.40	1													30					
47762+50.00	597.50	R312	596.50	1							234											
47766+50.00	597.50	R319	597.00	1							230											
47772+00.00	598.50	R319	597.50	1							350											
47773+60.00	598.50	R325	597.00	1							242											
47778+40.00	597.50	R325	597.00	1							264											
47780+90.00	597.00	R329	596.50	1							264											
47783+40.00	597.50	R331	597.00	1							264											
47788+40.00	599.00	R335	597.50	1							514											
47794+00.00	600.50	R341	599.00	1							574											
47799+75.00	602.50	R347	600.50	1							590											
<b>TOTAL</b>					<b>88</b>	<b>572</b>	<b>331</b>	<b>102</b>	<b>91</b>	<b>6061</b>	<b>212</b>	<b>3526</b>	<b>93</b>	<b>1766</b>	<b>296</b>	<b>268</b>	<b>73</b>	<b>88</b>	<b>85</b>	<b>886</b>		

Note A: Install portion of pipe east of Stage Construction Line in Stage 1, cover pipe end, install remainder in Stage 2



USER NAME = Pop00275	DESIGNED - JFC	REVISED - 4/8/2021
	DRAWN - DJP	REVISED -
PLOT SCALE = 2.00' / 1in	CHECKED - RDN	REVISED -
PLOT DATE = 4/7/2021	DATE - 1/18/2021	REVISED -

STATE OF ILLINOIS  
 DEPARTMENT OF TRANSPORTATION

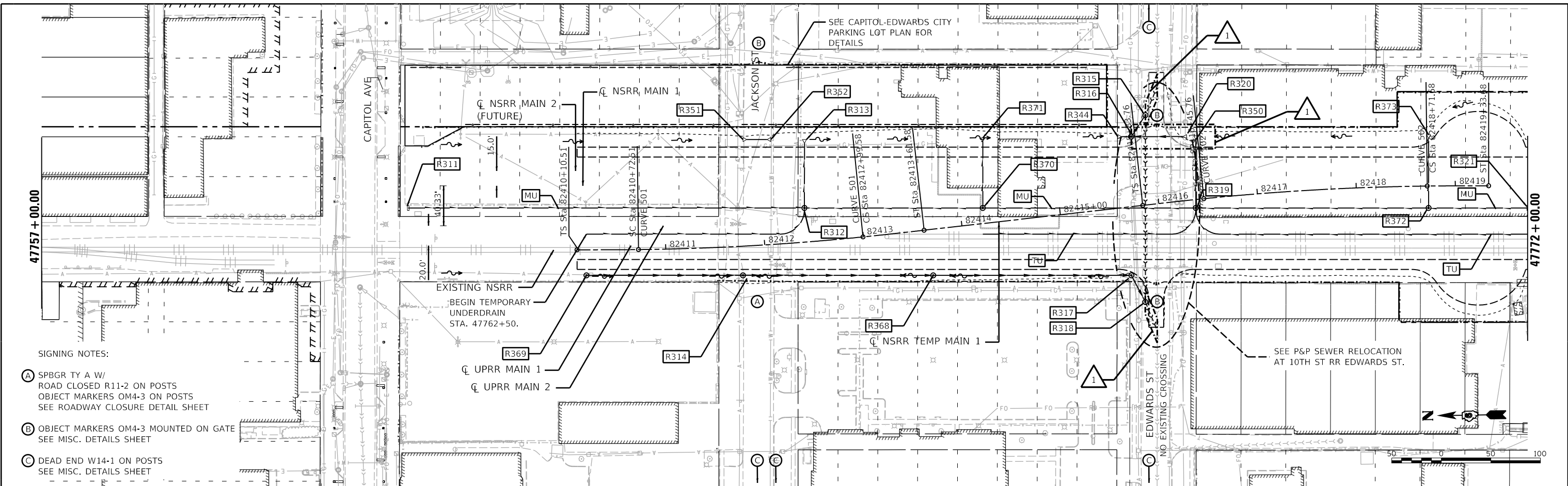
SPRINGFIELD RAIL IMPROVEMENTS PROJECT  
 SPRINGFIELD, SANGAMON COUNTY, ILLINOIS  
 SCHEDULE OF QUANTITIES - TRACK - 9

F.A.P. RTE.	SECTION	COUNTY	TOTAL SHEETS	SHEET NO.
*	19-00488-00-BR	SANGAMON	347	58
	09L0179B		CONTRACT NO. 93747	
* 7985A & 8025	ILLINOIS	FED. AID PROJECT		

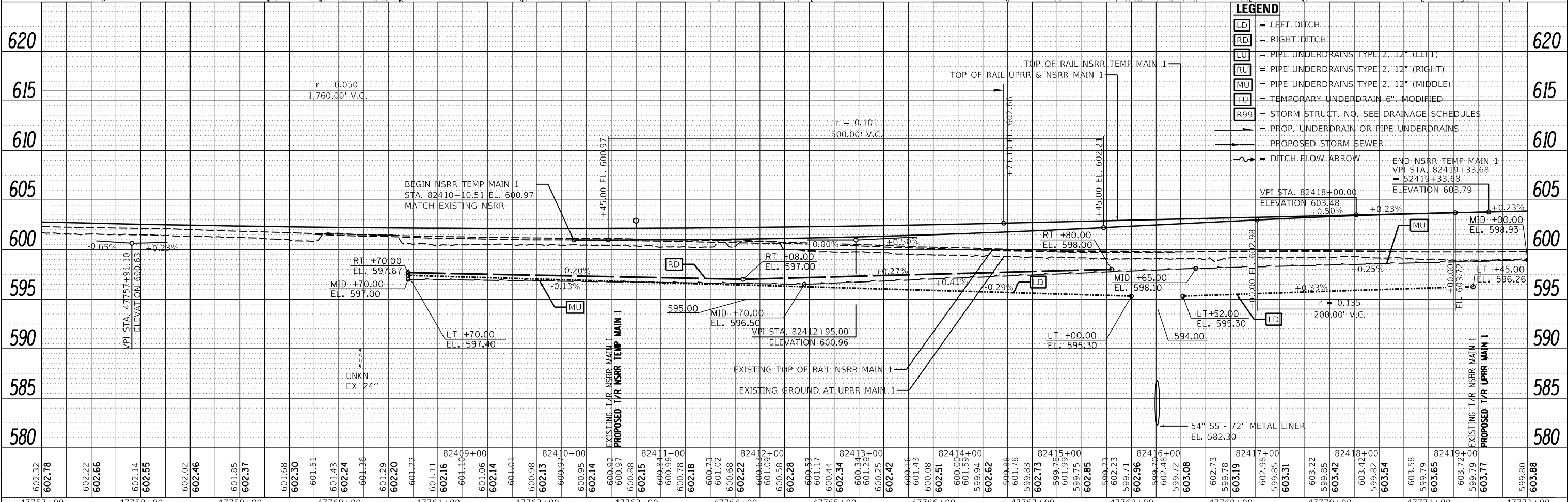
SCALE: SHEET 9 OF 9 SHEETS STA. TO STA.

MODEL SHEET 1  
 FILE NAME: p:\v\hanson\trac\sw\berkeley.com\hanson-pw-d\Documents\09\pos\0910179\0\table Segments III - V - V\CAD\Rail\Usable Segments V\SheetD660179B-PP-USV-TRAC-01.dgn

FINAL



- SIGNING NOTES:**
- (A) SPBGR TY A W/ ROAD CLOSED R11-2 ON POSTS  
OBJECT MARKERS OM4-3 ON POSTS  
SEE ROADWAY CLOSURE DETAIL SHEET
  - (B) OBJECT MARKERS OM4-3 MOUNTED ON GATE  
SEE MISC. DETAILS SHEET
  - (C) DEAD END W14-1 ON POSTS  
SEE MISC. DETAILS SHEET



**LEGEND**

- [LD] = LEFT DITCH
- [RD] = RIGHT DITCH
- [LU] = PIPE UNDERDRAINS TYPE 2, 12" (LEFT)
- [RU] = PIPE UNDERDRAINS TYPE 2, 12" (RIGHT)
- [MU] = PIPE UNDERDRAINS TYPE 2, 12" (MIDDLE)
- [TU] = TEMPORARY UNDERDRAIN 6", MODIFIED
- [R99] = STORM STRUCT. NO. SEE DRAINAGE SCHEDULES
- [Symbol] = PROP. UNDERDRAIN OR PIPE UNDERDRAINS
- [Symbol] = PROPOSED STORM SEWER
- [Symbol] = DITCH FLOW ARROW

END NSRR TEMP MAIN 1  
 VPI STA. 82418+00.00  
 ELEVATION 603.88  
 +0.50% +0.23% +0.23%

VPI STA. 82418+00.00  
 ELEVATION 603.88  
 +0.50% +0.23% +0.23%

END NSRR TEMP MAIN 1  
 VPI STA. 82419+33.68  
 ELEVATION 603.79

VPI STA. 82418+95.00  
 ELEVATION 600.96

VPI STA. 82419+33.68  
 ELEVATION 603.79

RT +70.00  
 EL. 597.00

MID +70.00  
 EL. 597.00

LT +70.00  
 EL. 597.40

RT +08.00  
 EL. 597.00

MID +70.00  
 EL. 596.50

LT +00.00  
 EL. 595.30

MID +65.00  
 EL. 598.10

LT +52.00  
 EL. 595.30

RT +80.00  
 EL. 598.00

MID +00.00  
 EL. 598.93

LT +45.00  
 EL. 596.26

54" SS - 72" METAL LINER  
 EL. 582.30

47757+00	47758+00	47759+00	47760+00	47761+00	47762+00	47763+00	47764+00	47765+00	47766+00	47767+00	47768+00	47769+00	47770+00	47771+00	47772+00
602.32	602.78	602.22	602.66	602.14	602.55	602.02	602.46	601.85	602.37	601.68	602.30	601.51	601.43	602.24	601.36
601.29	602.20	601.22	601.11	602.16	601.10	601.06	602.14	601.01	600.98	602.13	600.97	602.11	600.92	600.97	600.88
602.15	600.84	600.98	600.78	602.18	600.73	601.02	600.68	602.22	600.63	601.09	602.28	600.53	601.17	600.44	602.34
600.34	601.29	600.25	602.42	600.16	601.43	600.08	602.51	600.00	601.59	599.94	602.62	599.88	601.78	599.83	602.73
599.78	599.75	599.73	602.96	599.70	602.48	599.72	603.08	602.73	599.78	603.19	602.98	599.85	603.31	603.22	599.85
603.42	603.42	599.82	603.54	603.58	599.79	603.65	603.72	599.79	603.77	599.80	603.88				



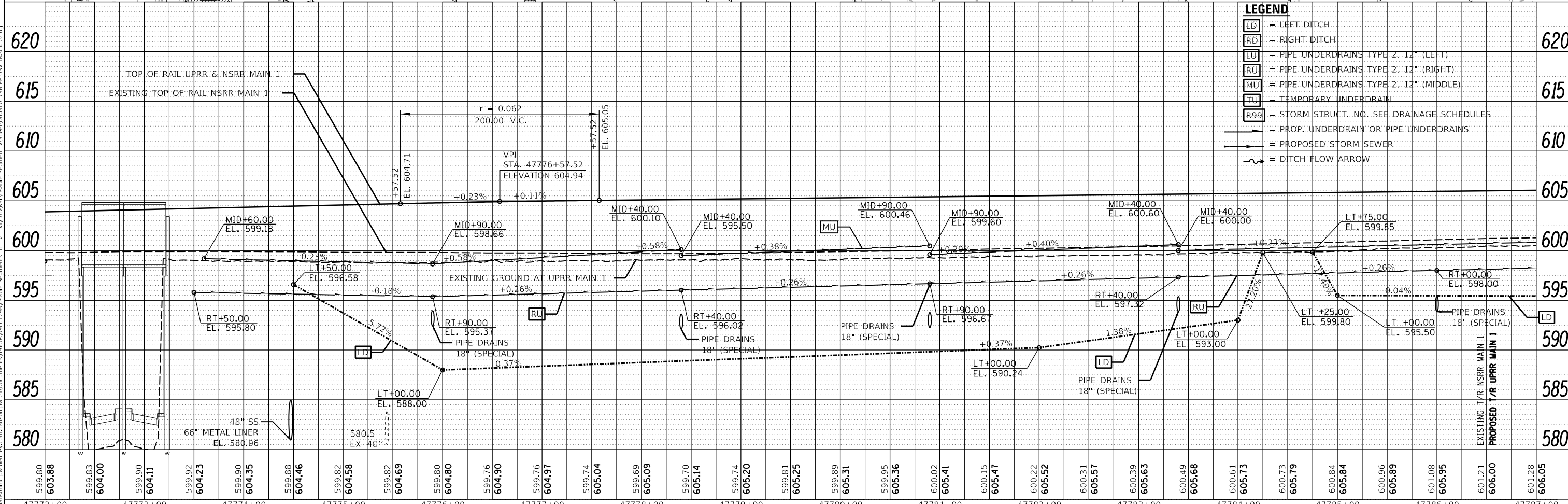
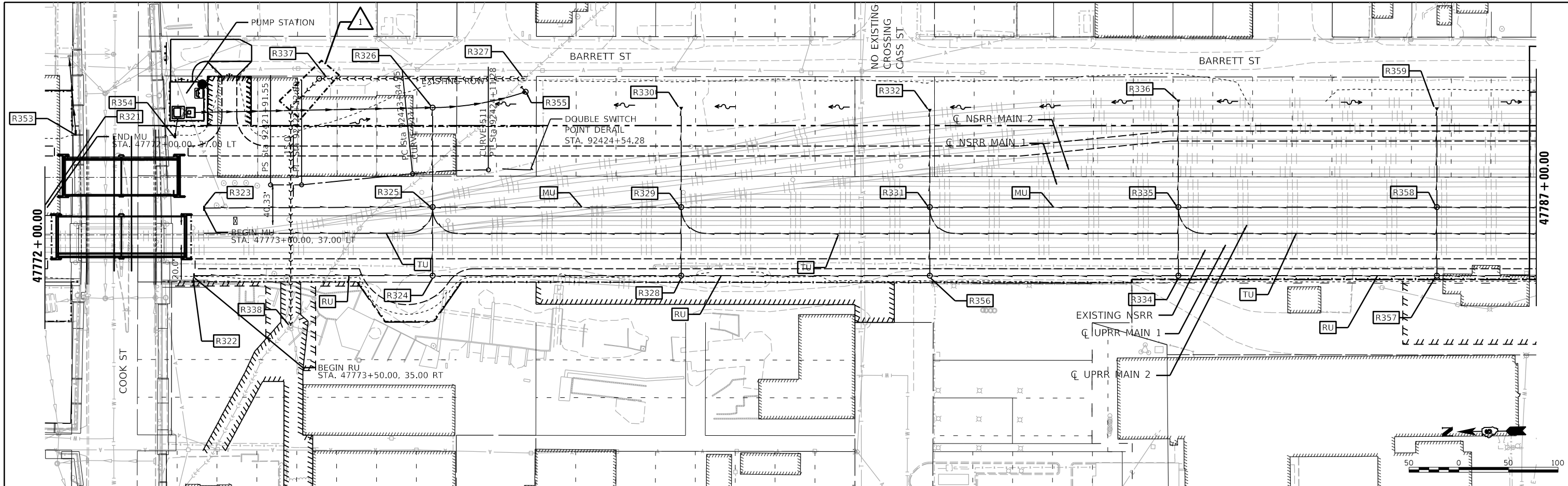
USER NAME = Pop00275	DESIGNED - GCN	REVISED - 4/8/2021
PLOT SCALE = 100.00' / In.	DRAWN - DJP	REVISED -
PLOT DATE = 4/7/2021	CHECKED - GCN	REVISED -
	DATE - 1/18/2021	REVISED -

**STATE OF ILLINOIS  
 DEPARTMENT OF TRANSPORTATION**

**SPRINGFIELD RAIL IMPROVEMENTS PROJECT  
 SPRINGFIELD, SANGAMON COUNTY, ILLINOIS  
 PLAN AND PROFILE - TRACK - 1**

SCALE: SHEET 1 OF 4 SHEETS STA. TO STA.

F.A.U. R.T.E.	SECTION	COUNTY	TOTAL SHEETS	SHEET NO.
	19-00488-00-BR	SANGAMON	347	88
	09L0179B	CONTRACT NO.	93747	
	7985A & 8055	ILLINOIS FED. AID PROJECT		



**LEGEND**

- [LD] = LEFT DITCH
- [RD] = RIGHT DITCH
- [LU] = PIPE UNDERDRAINS TYPE 2, 12" (LEFT)
- [RU] = PIPE UNDERDRAINS TYPE 2, 12" (RIGHT)
- [MU] = PIPE UNDERDRAINS TYPE 2, 12" (MIDDLE)
- [TU] = TEMPORARY UNDERDRAIN
- [R99] = STORM STRUCT. NO. SEE DRAINAGE SCHEDULES
- [Symbol] = PROP. UNDERDRAIN OR PIPE UNDERDRAINS
- [Symbol] = PROPOSED STORM SEWER
- [Symbol] = DITCH FLOW ARROW

599.80	603.88	599.83	604.00	599.90	604.11	599.92	604.23	599.90	604.35	599.88	604.46	599.82	604.58	599.82	604.69	599.80	604.80	599.76	604.90	599.76	604.97	599.74	605.04	599.69	605.09	599.70	605.14	599.74	605.20	599.81	605.25	599.89	605.31	599.95	605.36	600.02	605.41	600.15	605.47	600.22	605.52	600.31	605.57	600.39	605.63	600.49	605.68	600.61	605.73	600.73	605.79	600.84	605.84	600.96	605.89	601.08	605.95	601.21	606.00	601.28	606.05
47772+00	47773+00	47774+00	47775+00	47776+00	47777+00	47778+00	47779+00	47780+00	47781+00	47782+00	47783+00	47784+00	47785+00	47786+00	47787+00																																														

FINAL

MODEL Sheet 2  
FILE NAME: p:\hanson\trc\w\berkeley.com\hanson-pw\1\Documents\09\pos\09101798\Usable\_Segments - V - V\CAD\Rail\Usable\_Segments - V\Sheet\09101798-09-09-2021-Track-02.dgn



USER NAME = Pop00275	DESIGNED - GCN	REVISED - 4/8/2021
PLOT SCALE = 100.00' / in.	DRAWN - DJP	REVISED -
PLOT DATE = 4/7/2021	CHECKED - GCN	REVISED -
	DATE - 1/18/2021	REVISED -

STATE OF ILLINOIS  
DEPARTMENT OF TRANSPORTATION

SPRINGFIELD RAIL IMPROVEMENTS PROJECT  
SPRINGFIELD, SANGAMON COUNTY, ILLINOIS  
PLAN AND PROFILE - TRACK - 2

SCALE: SHEET 2 OF 4 SHEETS STA. TO STA.

F.A.U. RTE.	SECTION	COUNTY	TOTAL SHEETS	SHEET NO.
	19-00488-00-BR	SANGAMON	347	89
	09L0179B		CONTRACT NO.	93747
	7985A & 8056	ILLINOIS	FED. AID PROJECT	

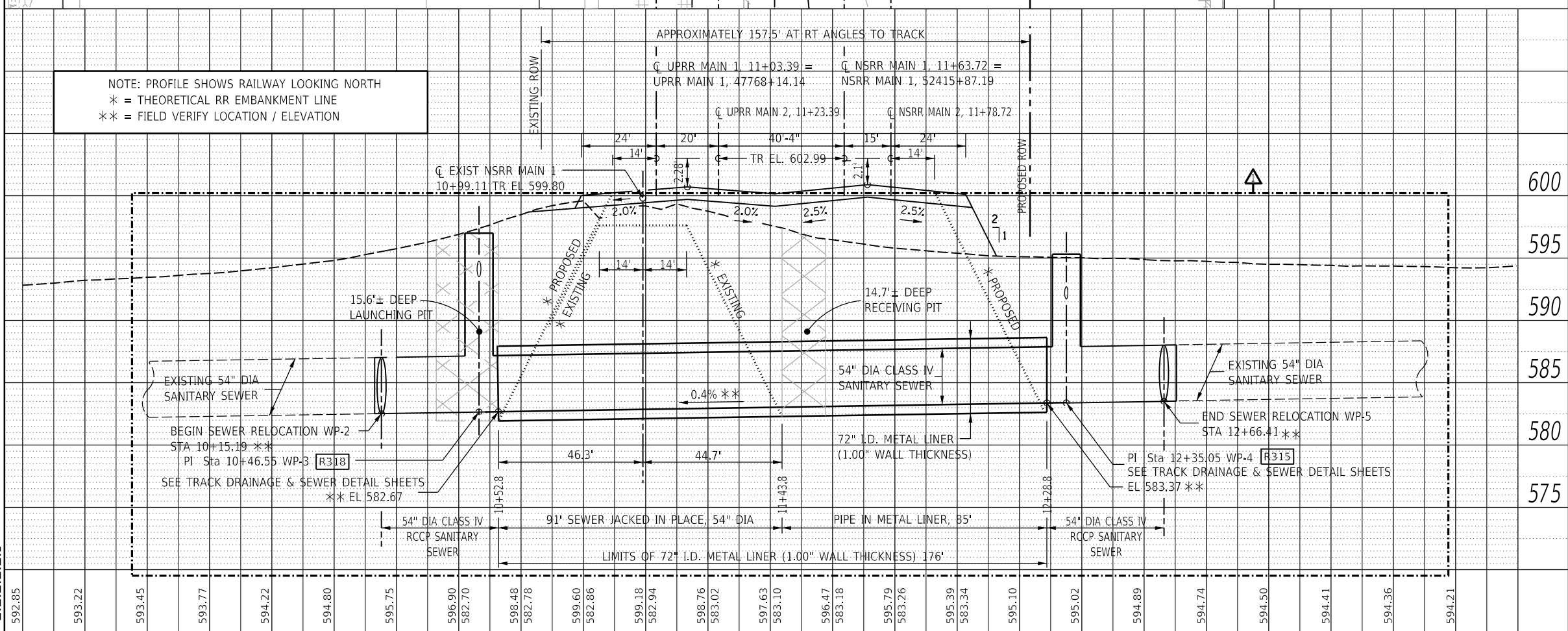
ALIGNMENT CONTROLS 54" RELOCATED SANITARY SEWER

WORKING POINTS	STATION	NORTHING	EASTING	COMMENTS
WP-1	9+50.00	1139969.57	2443771.17	CL CONTROL POINT BEGIN
WP-2	10+15.19	1139993.68	2443831.74	(A) CL W.P. OF 22°30' ELBOW **
WP-3	10+46.55	1140005.28	2443860.88	CL W.P. OF MH R318
WP-4	12+35.05	1140002.66	2444049.36	CL W.P. OF MH R315
WP-5	12+66.41	1139990.26	2444078.16	(A) CL W.P. OF 22°30' ELBOW **
WP-6	13+00.00	1139976.98	2444109.01	CL CONTROL POINT END

600  
595  
590  
585  
580  
575

NOTES

- (A) PIPE ELBOW COST INCLUDED IN 54" Ø SEWER
- (B) FILL ABANDONED BRICK SEWER WITH CLSM UPON COMPLETION OF SEWER RELOCATION.
- (C) DRAINAGE STRUCTURES NOT SHOWN IN PROFILE
- (D) SEE TRACK DRAINAGE & SEWER DETAIL SHEETS FOR LAYOUT SCHEMATIC OF SEWERS ALONG EDWARDS STREET
- (E) CONTRACTOR SHALL FOLLOW ALL REQUIREMENTS OF NORFOLK SOUTHERN'S NSCE-8 SPECIFICATIONS. THE BORING AND JACKING OPERATION SHALL BE PROGRESSED ON A 24-HOUR BASIS WITHOUT STOPPAGE UNTIL THE LEADING EDGE OF THE PIPE HAS REACHED THE RECEIVING PIT.
- (F) PIPELINE AND CROSSING TO BE INSTALLED AND MAINTAINED IN ACCORDANCE WITH LAST APPROVED "AMERICAN RAILWAY ENGINEERING AND MAINTENANCE OF WAY ASSOCIATION" SPECIFICATIONS FOR PIPELINES CONVEYING FLAMMABLE AND NON-FLAMMABLE SUBSTANCES.
- (G) PIPELINE MARKER SIGN  
NOTE : COST INCLUDED WITH 54" DIAMETER SANITARY SEWER
- (H) THE 54" DIAMETER SANITARY SEWER SHALL BE CONSTRUCTED DURING STAGE 1, AFTER REMOVAL OF EXISTING NSRR TRACK 1 AND PRIOR TO TRACK CONSTRUCTION.
- (J) SEE TRACK ROW & FENCING / ACCESS PLANS FOR COMPLETE ROW AND EASEMENTS WITH STATION & OFFSET CALLOUTS.
- (K) SOIL SUPPORT FOR LAUNCHING AND RECEIVING PITS SHALL BE DESIGNED FOR RAILROAD / HIGHWAY LOADING.
- (L) TRACK MONITORING WILL BE REQUIRED. IF SETTLEMENT OCCURS DURING CONSTRUCTION N.S. MAY REQUIRE UP TO 30 DAYS OF POST-CONSTRUCTION MONITORING.



STATION	ELEVATION	REVISION	DATE
202+00	592.85		
202+50	593.22		
203+00	593.45		
10+50	593.77		
11+00	594.22		
11+50	594.80		
12+00	595.75		
12+50	596.90		
206+00	598.70		
206+50	598.48		
	598.78		
	599.60		
	582.86		
	599.18		
	582.94		
	598.76		
	583.02		
	597.63		
	583.10		
	596.47		
	583.18		
	595.79		
	583.26		
	595.39		
	583.34		
	595.10		
	595.02		
	594.89		
	594.74		
	594.50		
	594.41		
	594.36		
	594.21		



USER NAME	DESIGNED	REVISION	DATE
= Pop00275	JWM/TMF	4/8/2021	
	CLG		
	JWM		

STATE OF ILLINOIS  
DEPARTMENT OF TRANSPORTATION

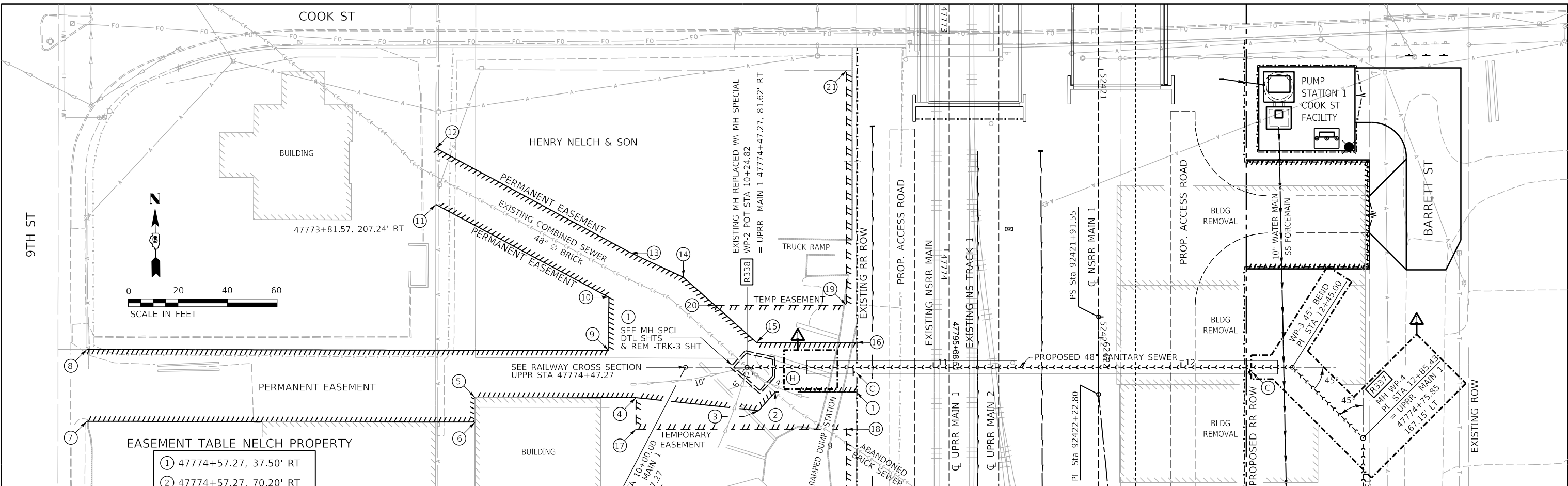
**SPRINGFIELD RAIL IMPROVEMENTS PROJECT**  
**SPRINGFIELD, SANGAMON COUNTY, ILLINOIS**  
**P&P SEWER RELOCATION AT RR - EDWARDS ST**

SCALE: SHEET 1 OF 1 SHEETS STA. TO STA.

F.A.U. RTE.	SECTION	COUNTY	TOTAL SHEETS	SHEET NO.
	19-00488-00-BR	SANGAMON	347	93
09L0179B			CONTRACT NO. 93747	

FINAL

MODEL: Sheet 1  
FILE NAME: p:\hanson\csw\hanson\csw\1\Documents\09\bas\09179b\1\table\Segment\_VS\Fire\09179b\1\table\09179b.dwg

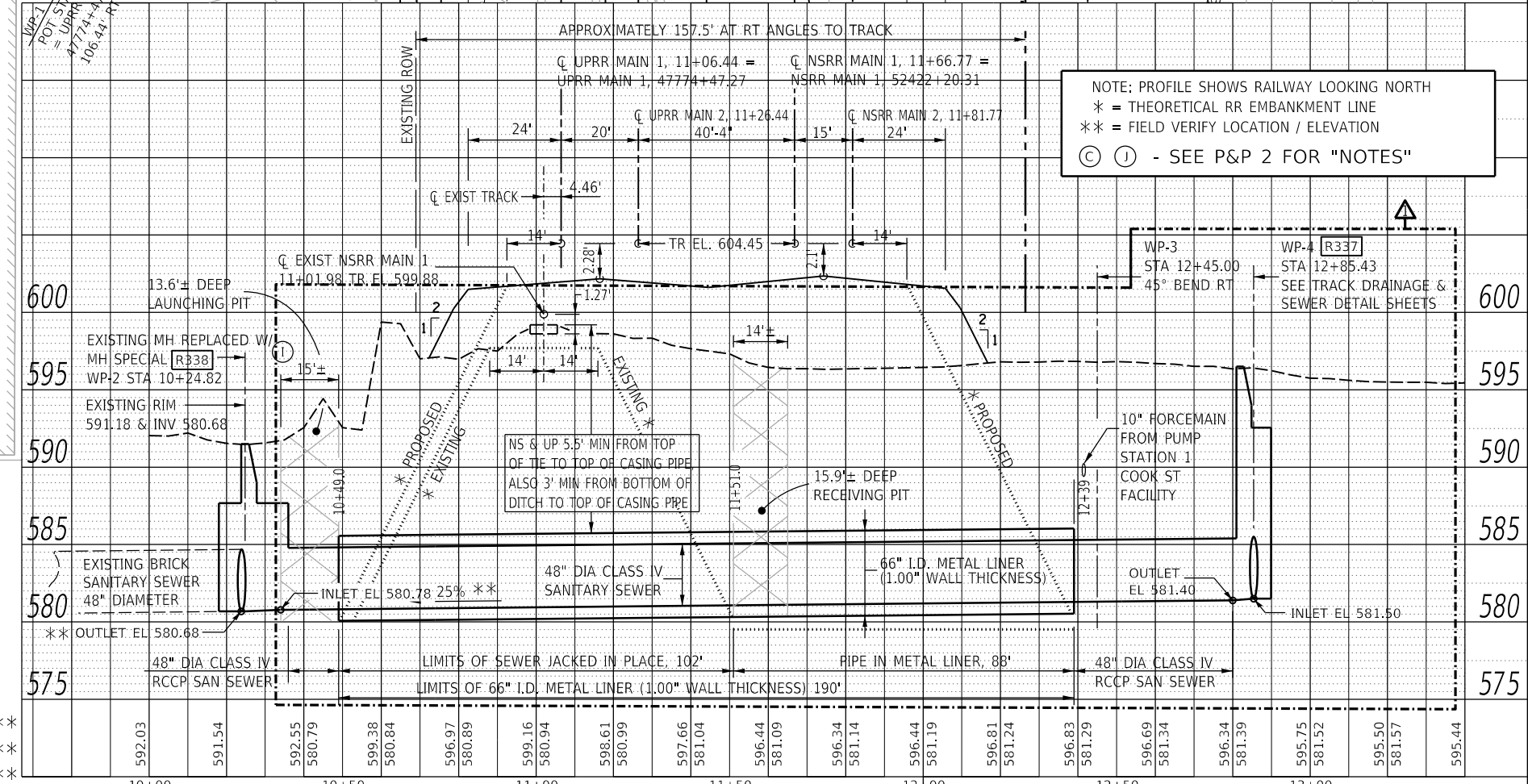


EASEMENT TABLE NELCH PROPERTY

1	47774+57.27, 37.50' RT
2	47774+57.27, 70.20' RT
3	47774+64.81, 76.93' RT
4	47774+59.54, 126.41' RT
5	47774+59.41, 191.32' RT
6	47774+69.41, 191.33' RT
7	47774+69.09, 348.15' RT
8	47774+40.09, 348.13' RT
9	47774+40.52, 137.46' RT
10	47774+19.04, 137.41' RT
11	47773+81.57, 207.24' RT
12	47773+58.88, 207.21' RT
13	47774+01.14, 128.48' RT
14	47774+10.89, 107.37' RT
15	47774+37.27, 77.77' RT
16	47774+37.27, 37.48' RT
17	47774+72.27, 126.44' RT
18	47774+72.27, 41.51' RT
19	47774+22.27, 41.46' RT
20	47774+22.27, 94.60' RT
21	47773+27.54, 41.37' RT

ALIGNMENT CONTROLS 48" RELOCATED SANITARY SEWER

WORKING POINTS	STATION	NORTHING	EASTING	COMMENTS
WP-1	10+00.00	1139372.86	2443802.71	CL CONTROL POINT BEGIN
WP-2	10+24.82	1139372.52	2443827.52	W.P. MH SPECIAL R338
WP-3	12+45.00	1139369.54	2444047.68	CL W.P. OF 45°00' BEND RT
WP-4	12+85.43	1139340.57	2444075.88	CL W.P. 9' DIA MH R337



NOTE: PROFILE SHOWS RAILWAY LOOKING NORTH  
 \* = THEORETICAL RR EMBANKMENT LINE  
 \*\* = FIELD VERIFY LOCATION / ELEVATION  
 (C) (J) - SEE P&P 2 FOR "NOTES"

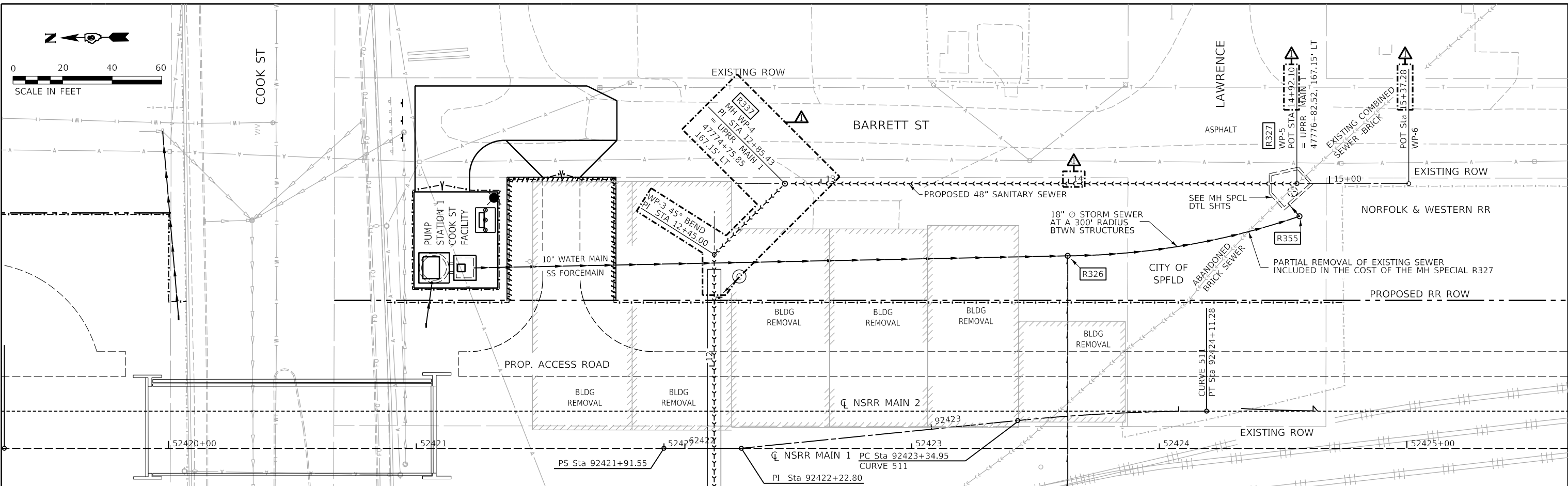
STATE OF ILLINOIS  
 DEPARTMENT OF TRANSPORTATION

<b>SPRINGFIELD RAIL IMPROVEMENTS PROJECT</b> <b>SPRINGFIELD, SANGAMON COUNTY, ILLINOIS</b> <b>P&amp;P SEWER RELOCATION AT RR / SOUTH OF COOK ST- 1</b>		F.A.U. RTE.	SECTION	COUNTY	TOTAL SHEETS	SHEET NO.
SCALE: SHEET 1 OF 2 SHEETS STA. TO STA.		19-00488-00-BR	09L0179B	SANGAMON	347	94
		7985A & 8061	ILLINOIS	FED. AID PROJECT	CONTRACT NO. 93747	

FINAL



USER NAME = Pop00275	DESIGNED - JWM/TMF	REVISED - 4/8/2021
PLOT SCALE = 40,000' / In.	DRAWN - CLG	REVISED -
PLOT DATE = 4/7/2021	CHECKED - JWM	REVISED -
	DATE - 1/18/2021	REVISED -

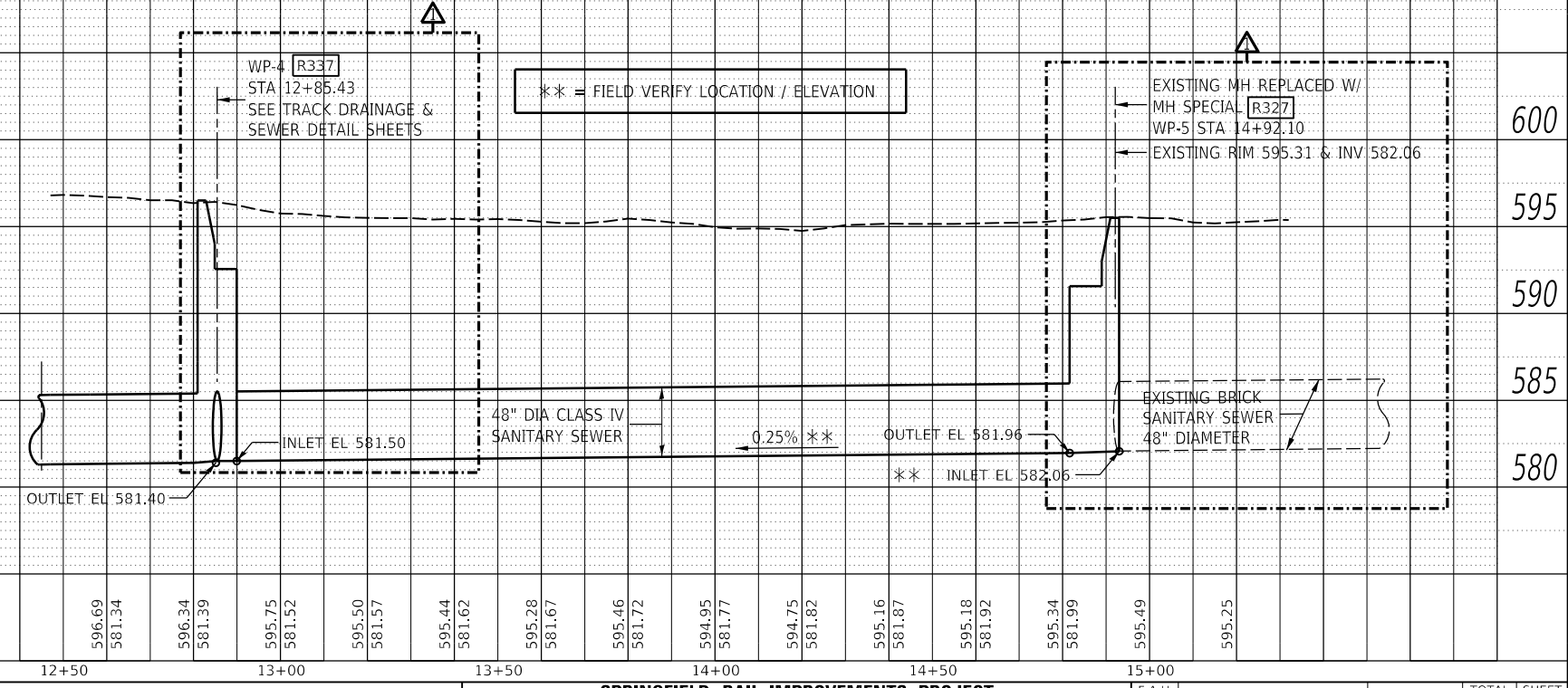


ALIGNMENT CONTROLS 48" RELOCATED SANITARY SEWER

WORKING POINTS	STATION	NORTHING	EASTING	COMMENTS	
WP-3	12+45.00	1139369.54	2444047.68	CL W.P. OF 45°00' BEND RT	**
WP-4	12+85.43	1139340.57	2444075.88	CL W.P. 9' DIA MH R337	**
WP-5	14+92.10	1139133.92	2444073.08	W.P. MH SPECIAL R327	**
WP-6	15+37.28	1139088.74	2444072.47	CL CONTROL POINT END	

**NOTES**

- (A) CONTRACTOR SHALL FOLLOW ALL REQUIREMENTS OF NORFOLK SOUTHERN'S NSCE-8 SPECIFICATIONS. THE BORING AND JACKING OPERATION SHALL BE PROGRESSED ON A 24-HOUR BASIS WITHOUT STOPPAGE UNTIL THE LEADING EDGE OF THE PIPE HAS REACHED THE RECEIVING PIT.
- (B) PIPELINE AND CROSSING TO BE INSTALLED AND MAINTAINED IN ACCORDANCE WITH LAST APPROVED "AMERICAN RAILWAY ENGINEERING AND MAINTENANCE OF WAY ASSOCIATION" SPECIFICATIONS FOR PIPELINES CONVEYING FLAMMABLE AND NON-FLAMMABLE SUBSTANCES.
- (C) PIPELINE MARKER SIGN NOTE : COST INCLUDED WITH 48"Ø SS
- (D) THE 48" DIAMETER SANITARY SEWER SHALL BE CONSTRUCTED DURING STAGE 1 AFTER INS. TRACK 1 AND YARD TRACK REMOVAL AND PRIOR TO TRACK CONSTRUCTION.
- (E) CONFIRM THAT THERE ARE NO SERVICE CONNECTIONS IN ANY PORTION OF THE ABANDONED BRICK SEWER PRIOR TO FILLING WITH CLSM UPON COMPLETION OF SEWER RELOCATION.
- (F) SEE TRACK ROW & FENCING / ACCESS PLANS FOR COMPLETE ROW AND EASEMENTS WITH STATION & OFFSET CALLOUTS.
- (G) SOIL SUPPORT FOR LAUNCHING AND RECEIVING PITS SHALL BE DESIGNED FOR RAILROAD / HIGHWAY LOADING.
- (H) CONTRACTOR SHALL PROTECT EXISTING STORM SEWER DURING JACKING. THIS PROTECTION SHALL BE INCLUDED AS PART OF CONTRACTOR'S JACKING PIT DESIGN.
- (I) TRACK MONITORING WILL BE REQUIRED. IF SETTLEMENT OCCURS DURING CONSTRUCTION N.S. MAY REQUIRE UP TO 30 DAYS OF POST-CONSTRUCTION MONITORING.
- (J) ALL UNDOCUMENTED SEWER SERVICES FOUND WHILE INSTALLING THE NEW 48" SEWER SHALL BE RECONNECTED INTO THE NEW SEWER.



MODEL Sheet 2  
FILE NAME: p:\hanson\p\sw\sewer\p\11\Documents\09\post\09101798\util\_48"oc-usv-122.dgn  
Segment: V:\CAD\Rail\Usable - V:\CAD\Rail\Usable - Segment: V:\Sheet\09101798\util\_48"oc-usv-122.dgn

FINAL



USER NAME = Pop00275	DESIGNED - JWM/TMF	REVISED - 4/8/2021
PLOT SCALE = 40,000' / In.	DRAWN - CLG	REVISED -
PLOT DATE = 4/7/2021	CHECKED - JWM	REVISED -
	DATE - 1/18/2021	REVISED -

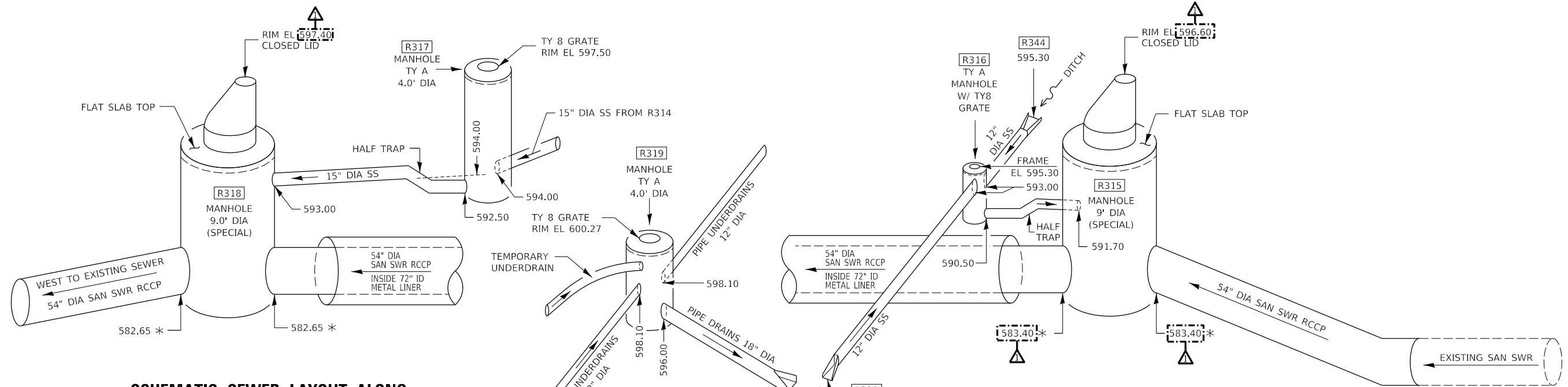
**STATE OF ILLINOIS  
DEPARTMENT OF TRANSPORTATION**

**SPRINGFIELD RAIL IMPROVEMENTS PROJECT  
SPRINGFIELD, SANGAMON COUNTY, ILLINOIS  
P&P SEWER RELOCATION AT RR / SOUTH OF COOK ST- 2**

SCALE: SHEET 2 OF 2 SHEETS STA. TO STA.

F.A.U. RTE.	COUNTY	TOTAL SHEETS	SHEET NO.
19-00488-00-BR	SANGAMON	347	95
09L0179B	CONTRACT NO.	93747	
7985A & 8062	ILLINOIS FED. AID PROJECT		



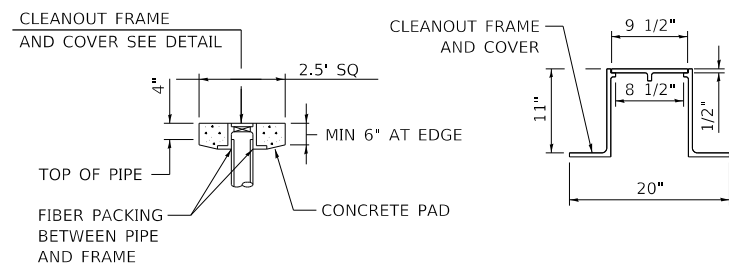
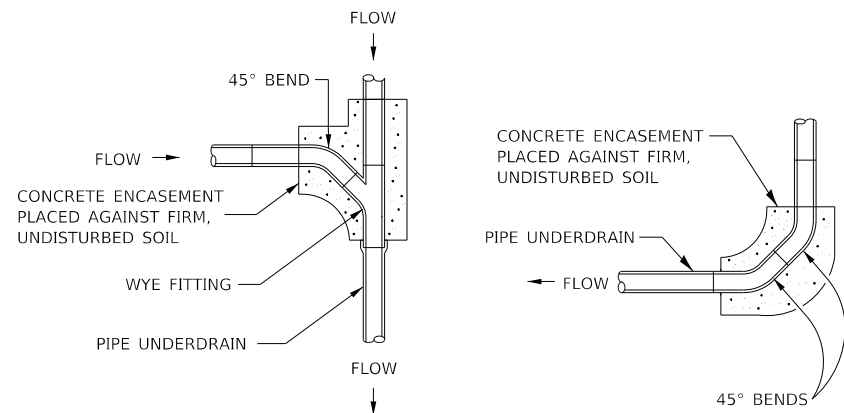


**SCHEMATIC SEWER LAYOUT ALONG EDWARDS STREET AT MANHOLE R318**

\* = FIELD VERIFY      LOOKING NORTH  
NTS

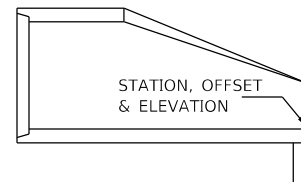
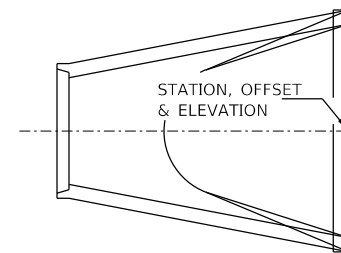
**SCHEMATIC SEWER LAYOUT ALONG EDWARDS STREET AT MANHOLE R315**

\* = FIELD VERIFY      LOOKING NORTHWEST  
NTS

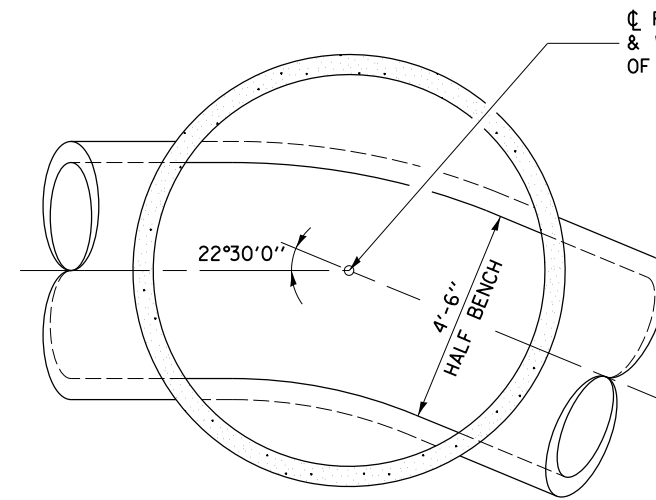


NOTE:  
THE CONTRACT UNIT PRICE PIPE UNDERDRAIN FOR STRUCTURES SHALL INCLUDE THE BENDS AND RISER PIPE, CONCRETE ENCASEMENT, FRAME & COVER AND CONCRETE PAD.

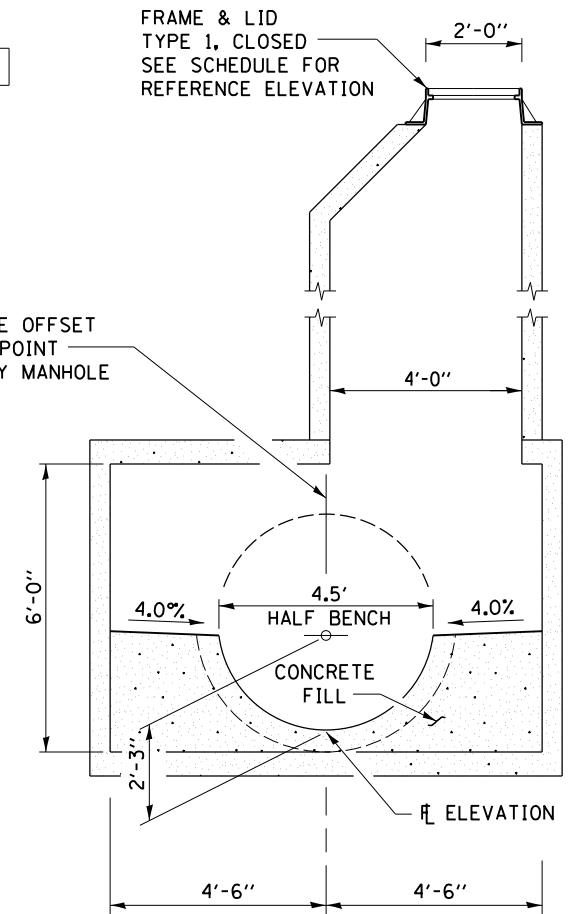
**PIPE UNDERDRAIN CLEANOUT**  
N.T.S.



STANDARD 542301  
**END SECTION OFFSET**  
N.T.S.



**PLAN VIEW SANITARY SEWER MANHOLE**  
R315 & R318  
N.T.S.



**SECTION SANITARY SEWER MANHOLE**  
R315 & R318  
N.T.S.

FINAL

MODEL: Sheet 1  
FILE: h:\a\c\p\hanson\c-cw-bentley.com\hanson\p-c\1\Documents\09\09\01\798\Track-Charge-Details\01.dgn



USER NAME = Pop00275	DESIGNED - JWM/TMF	REVISED - 4/8/2021
PLOT SCALE = 10.00' / in.	DRAWN - CLG	REVISED -
PLOT DATE = 4/7/2021	CHECKED - JWM	REVISED -
	DATE - 1/18/2021	REVISED -

STATE OF ILLINOIS  
DEPARTMENT OF TRANSPORTATION

SPRINGFIELD RAIL IMPROVEMENTS PROJECT  
SPRINGFIELD, SANGAMON COUNTY, ILLINOIS  
DRAINAGE AND SEWER DETAILS - TRACK - 1

SCALE: SHEET 1 OF 2 SHEETS STA. TO STA.

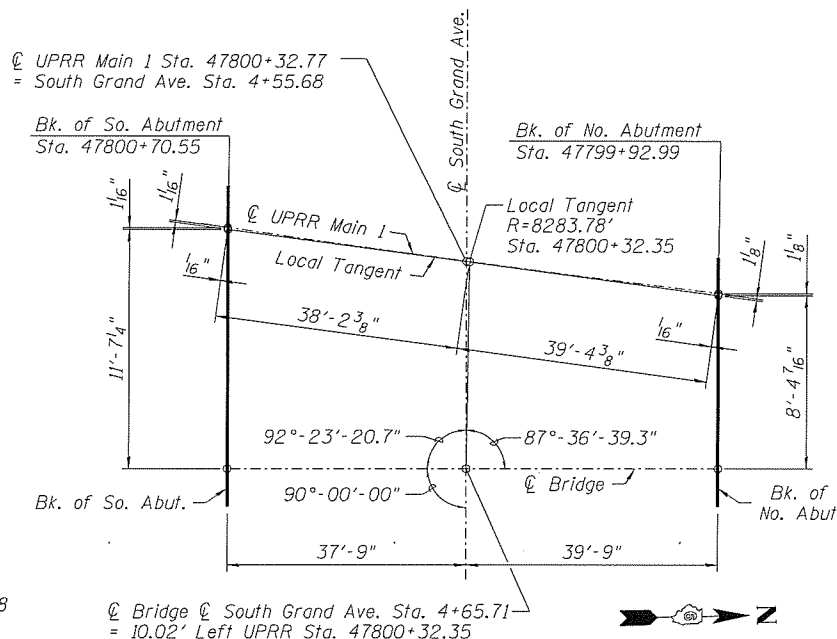
F.A.P. RTE.	SECTION	COUNTY	TOTAL SHEETS	SHEET NO.
*	19-00488-00-BR	SANGAMON	347	108
	09L0179B	CONTRACT NO.	93747	
* 7985A & 8075	ILLINOIS	FED. AID PROJECT		

**GENERAL NOTES**

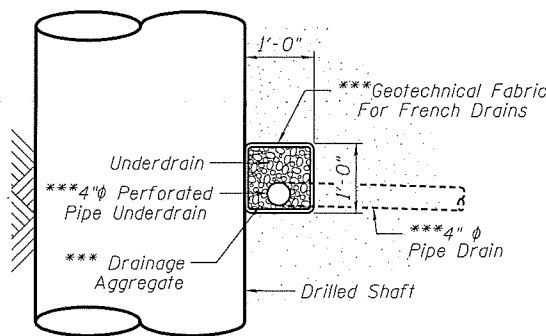
- Fasteners shall be ASTM A325 Type 1, mechanically galvanized bolts. Bolts 7/8 in.  $\phi$ , holes 15/16 in.  $\phi$ , unless otherwise noted.
- Calculated weight of Structural Steel, ASTM A709, Gr. 50 = 543,020 lbs.  
ASTM A36, Gr. 36 = 76,710 lbs.
- All structural steel shall be ASTM A709 Grade 50 unless otherwise noted on the plans. The deck plate shall be ASTM A36.
- All substructure concrete shall have a compressive strength of 4,000 psi at 14 days.
- No field welding is permitted except as specified in the contract documents.
- Reinforcement bars designated (E) shall be epoxy coated.
- Bearing seat surfaces shall be constructed or adjusted to the designated elevations within a tolerance of 1/8 inch (0.01 ft.). Adjustment shall be made either by grinding the surface or by shimming the bearings.
- Concrete Sealer shall be applied to the following surfaces:  
Abutments - inside face of backwall, inside face of cheekwall, top of cap, entire concrete facing attached to abutment caps and drilled shaft (except surfaces coated with surface color treatment).  
Superstructure - entire exposed surface of precast prestressed fascia beam and curb (except surfaces coated with surface color treatment), concrete railing end post.
- Concrete Surface Color Treatment shall be applied to the following surfaces:  
Abutments - concrete facing, wingwall and cheekwall surfaces designated in plans.  
Superstructure - Precast fascia beam surfaces designated in plans.
- The Inorganic Zinc Rich Primer / Acrylic / Acrylic Paint System shall be used for shop and field painting of new structural steel except where otherwise noted. The color of the final finish coat for all interior steel surfaces, exterior bottom of deck plate, steel curb, shall be gray, Munsell No. 5B 7/1. The color of the final finish coat for the exterior and bottom flange of the fascia beams and exterior cantilever support bracket shall be blue, Munsell No. 10B 3/6.
- Waterproofing shall be applied to the backside of the abutment cap and backwall and backside of wingwalls for surfaces below ground. This shall be according to Article 503.18 of the Std. Spec. Cost included with Concrete Structures.

**Drilled shaft cross-hole sonic log (CSL) testing:**

- Drilled shafts shall be evaluated by cross-hole sonic log testing. Testing pipes shall be installed in each drilled shaft to facilitate the logging process, which will follow completion of each shaft.
- Furnish and install six standard 2 inch nominal diameter steel pipes (ASTM A53, Grade B) for use in CSL testing of each drilled shaft. Pipes shall be equally spaced around the interior of the reinforcing steel cage.
- Pipes shall be fitted with a screw-on watertight shoe and cap and shall be securely fixed to the interior of the reinforcing steel cage. Watertight joints shall be used to achieve the required length. The pipes shall be filled with water and plugged or capped before concrete placement. The upper end of the pipe shall not be left open during or after concrete placement. The pipes shall extend at least 2'-6" above the top of the drilled shaft concrete. The lower end of the pipes shall extend to the bottom of the shaft. Do not extend pipes into rock sockets with smaller diameter than drilled shafts.
- CSL testing will be completed by the Engineer at no cost to the Contractor. If CSL test results are unsatisfactory according to the Engineer, the Contractor shall propose a method of correction including designs if required to the Engineer for approval. The correction shall be at the expense of the Contractor.



**OFFSET SKETCH**



**PIPE UNDERDRAIN DETAIL**

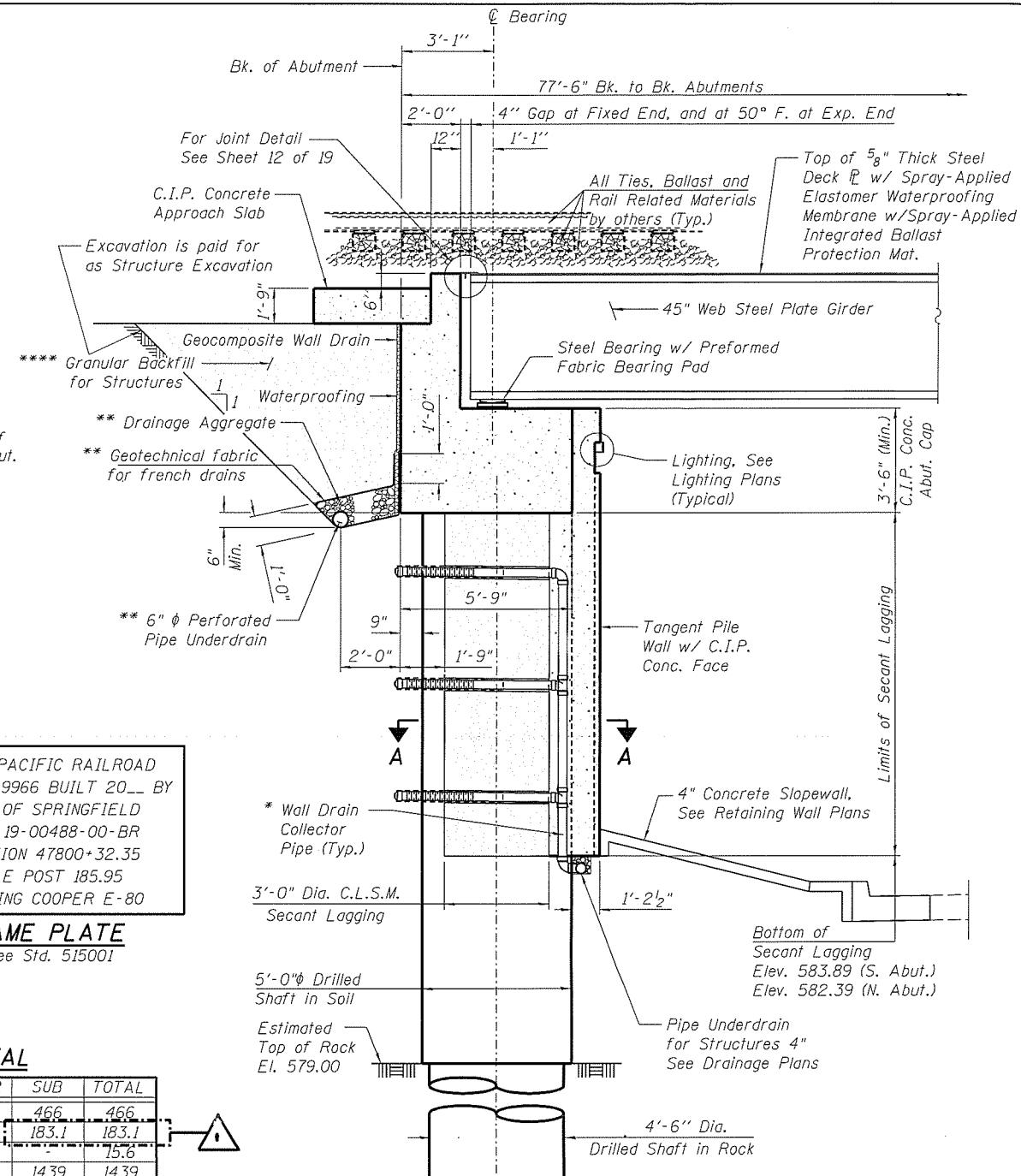
\*\*\*Included in the cost of "Pipe Underdrains for Structures, 4".

UNION PACIFIC RAILROAD  
S.N. 084-9966 BUILT 20\_\_ BY  
CITY OF SPRINGFIELD  
SEC. 19-00488-00-BR  
STATION 47800+32.35  
MILE POST 185.95  
LOADING COOPER E-80

**NAME PLATE**  
See Std. 515001

**TOTAL BILL OF MATERIAL**

ITEM	UNIT	SUPER	SUB	TOTAL
Structure Excavation	Cu. Yd.	-	466	466
Concrete Structures	Cu. Yd.	-	183.1	183.1
Concrete Superstructure	Cu. Yd.	15.6	-	15.6
Form Liner Textured Surface	Sq. Ft.	-	1439	1439
Reinforcement Bars	Pound	-	223400	223400
Reinforcement Bars, Epoxy Coated	Pound	2190	23580	25770
Name Plates	Each	-	1	1
Drilled Shaft in Soil	Cu. Yd.	-	207.9	207.9
Drilled Shaft in Rock	Cu. Yd.	-	179.0	179.0
Secant Lagging	Cu. Ft.	-	1359	1359
Granular Backfill for Structures	Cu. Yd.	-	103	103
Concrete Sealer	Sq. Ft.	1367	2721	4088
Geocomposite Wall Drain	Sq. Yd.	-	61	61
Crosshole Sonic Logging Access Ducts	Foot	-	630	630
Concrete Surface Color Treatment	Sq. Ft.	282	148	430
Membrane Waterproofing (Special)	Sq. Ft.	3128	-	3128
Furnishing and Erecting Structural Steel, Bridge No. 3	L. Sum	1	-	1
Precast Prestressed Concrete Fascia Beam, No. 3	L. Sum	1	-	1
Steel Railing (Special)	Foot	158	-	158
Pipe Underdrains for Structures, 4"	Foot	-	132	132
Pipe Underdrains for Structures, 6"	Foot	-	133	133



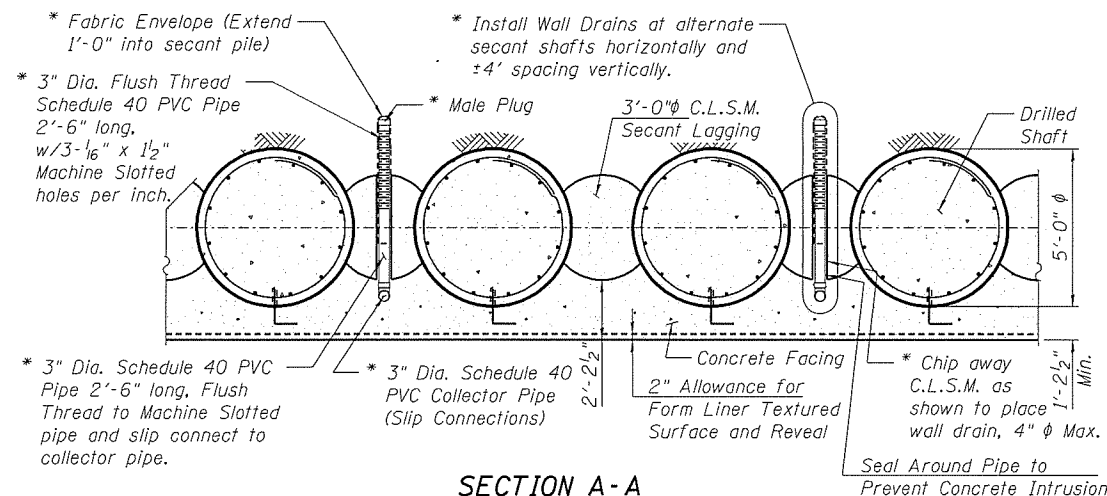
**ABUTMENT SECTION**

(At Rt. L's to Back of Abutment)

South Abutment section shown, North Similar  
\*\* Included in the cost of "Pipe Underdrains for Structures, 6". For additional drainage details see Roadway Plans.  
\*\*\*\* Granular Backfill for Structures shall be placed and compacted according to Section 502.10 of the Standard Specifications.

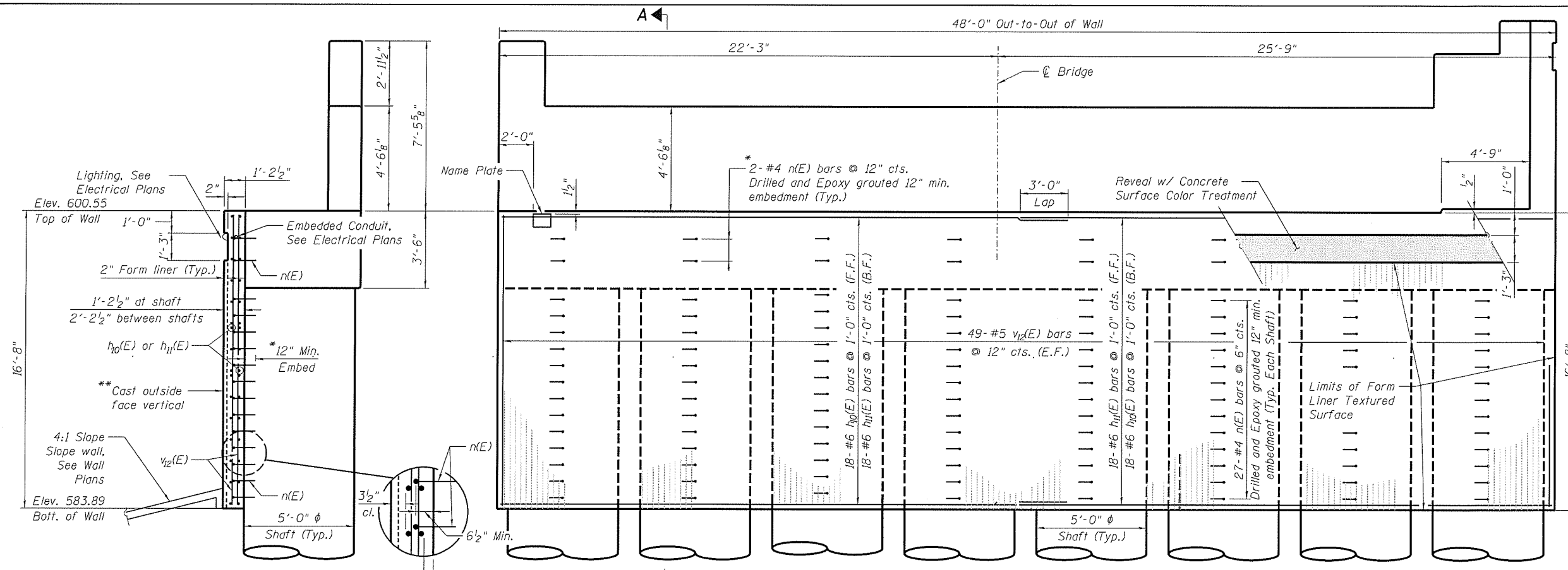
**INDEX OF SHEETS**

- General Plan and Elevation
- General Data
- Foundation Layout
- Superstructure
- Structural Steel
- Structural Steel Details (1 of 3)
- Structural Steel Details (2 of 3)
- Structural Steel Details (3 of 3)
- Precast Fascia Beam
- Precast Fascia Beam Details
- Bearing Details
- Membrane Waterproofing
- Steel Railing (Special) Westside
- Steel Railing (Special) Eastside
- South Abutment
- South Abutment Details
- North Abutment
- North Abutment Details
- Subsurface Data Profile



**SECTION A-A**

\* Included in the cost of "Pipe Underdrains for Structures, 4".

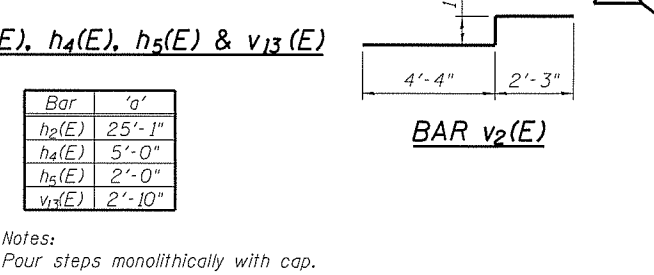
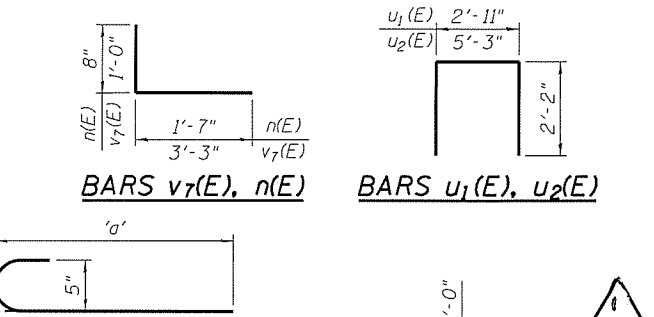
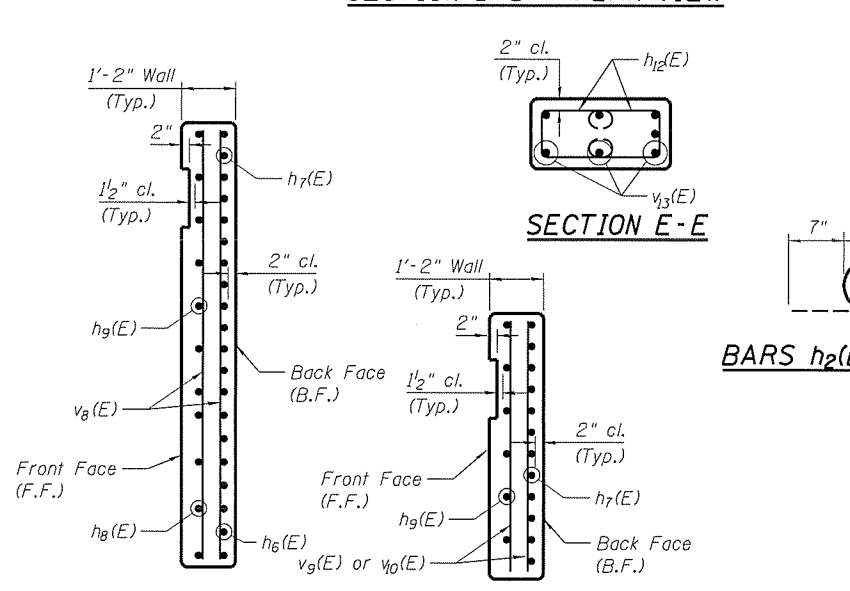
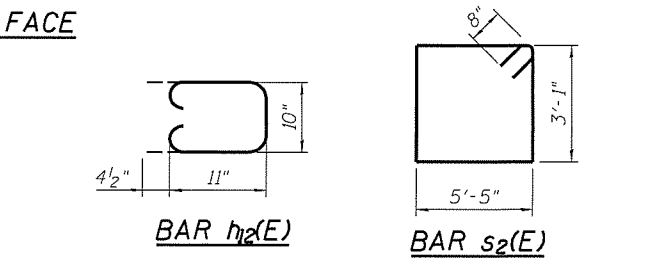
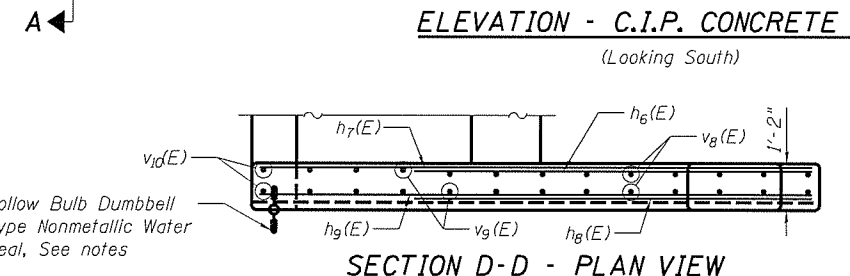
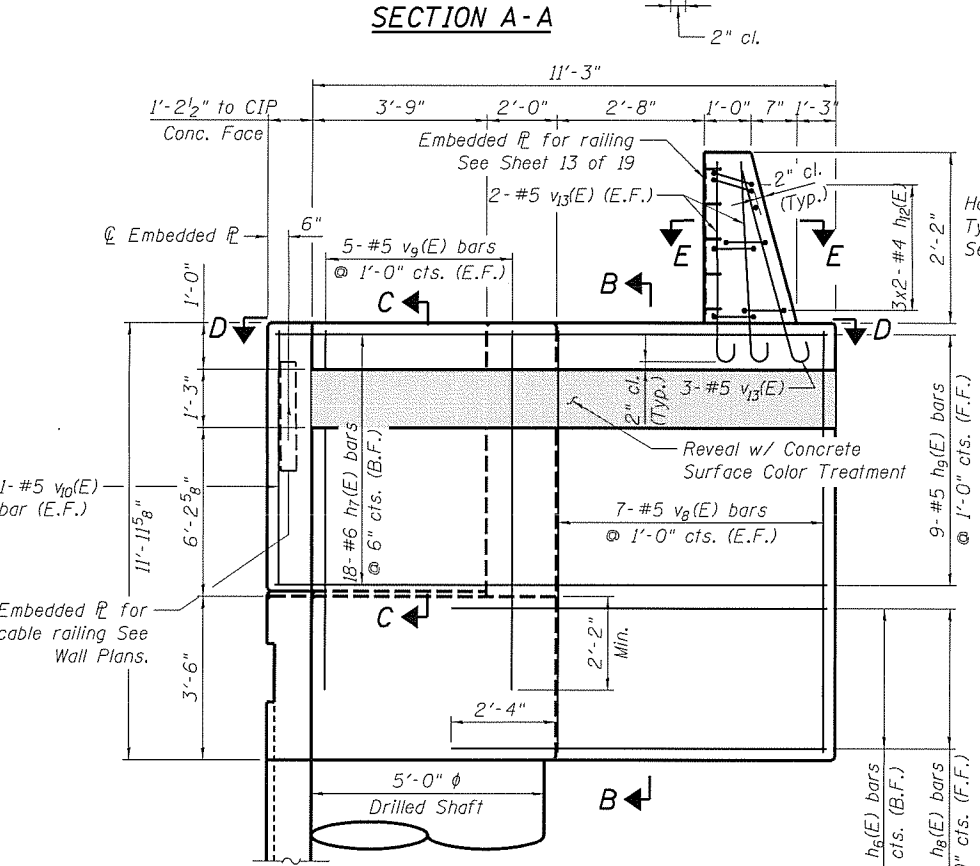


\* Bars epoxy grouted shall have an embedment sufficient to develop 1.25 times the full capacity of the reinforcement bar.

\*\* Concrete wall face shall be cast vertically. Thickness of wall may vary due to abutment deflection. The Min. wall thickness shall be 11 1/2".

**BILL OF MATERIAL**

Bar	No.	Size	Length	Shape
h1(E)	12	#5	25'-1"	—
h2(E)	12	#5	25'-8"	—
h3(E)	8	#5	1'-9"	—
h4(E)	6	#5	5'-7"	—
h5(E)	4	#5	2'-7"	—
h6(E)	7	#6	7'-10"	—
h7(E)	18	#6	12'-0"	—
h8(E)	4	#5	7'-10"	—
h9(E)	9	#5	12'-0"	—
h10(E)	36	#6	22'-0"	—
h11(E)	36	#6	28'-8"	—
h12(E)	6	#4	3'-5"	—
n(E)	232	#4	2'-3"	L
p1(E)	14	#8	47'-8"	—
p2(E)	8	#5	47'-8"	—
s1	456	#6	15'-2"	O
s2(E)	59	#6	18'-4"	□
u1(E)	10	#5	7'-3"	U
u2(E)	8	#5	9'-7"	U
v1	192	#18	38'-10"	—
v2(E)	82	#5	7'-7"	—
v3(E)	41	#5	6'-8"	—
v4(E)	9	#5	9'-1"	—
v5(E)	5	#5	10'-7"	—
v6(E)	8	#5	9'-7"	—
v7(E)	30	#6	4'-3"	—
v8(E)	14	#5	11'-7"	—
v9(E)	10	#5	10'-9"	—
v10(E)	2	#5	8'-1"	—
v12(E)	98	#5	16'-4"	—
v13(E)	7	#5	3'-5"	—



Notes:  
 Pour steps monolithically with cap.  
 Space cap reinforcement to miss blockouts for anchor bolts.  
 See Retaining Wall Plans for Expansion Joint Detail at each end of C.I.P. Concrete Facing.  
 See Lighting Plans of Conduit and J-Box embedments in Wall Facing.

Bar	'a'
h2(E)	25'-1"
h4(E)	5'-0"
h5(E)	2'-0"
v13(E)	2'-10"

DESIGNED - CGP	REVISION - 04/09/2021
CHECKED - MNM	REVISION -
DRAWN - MGM	REVISION -
PLOT DATE - 4/8/2021	CHECKED - MJW
	REVISION -

STATE OF ILLINOIS  
 DEPARTMENT OF TRANSPORTATION

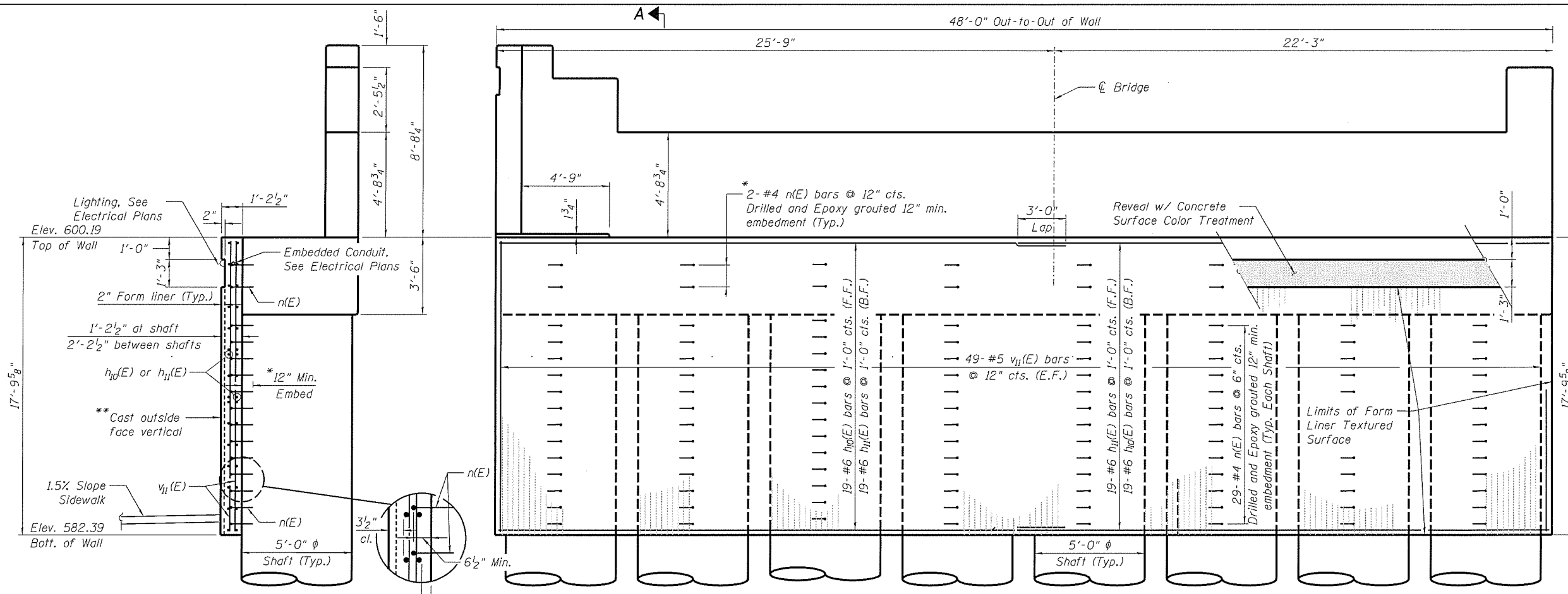
SOUTH ABUTMENT DETAILS  
 STRUCTURE NO. 084-9966  
 SHEET NO. 16 OF 19 SHEETS

F.A.P. RTE.	SECTION	COUNTY	TOTAL SHEETS	SHEET NO.
19-00488-00-BR		SANGAMON	347	247
CONTRACT NO. 93747				
7985A & 8214 ILLINOIS FED. AID PROJECT				

FINAL



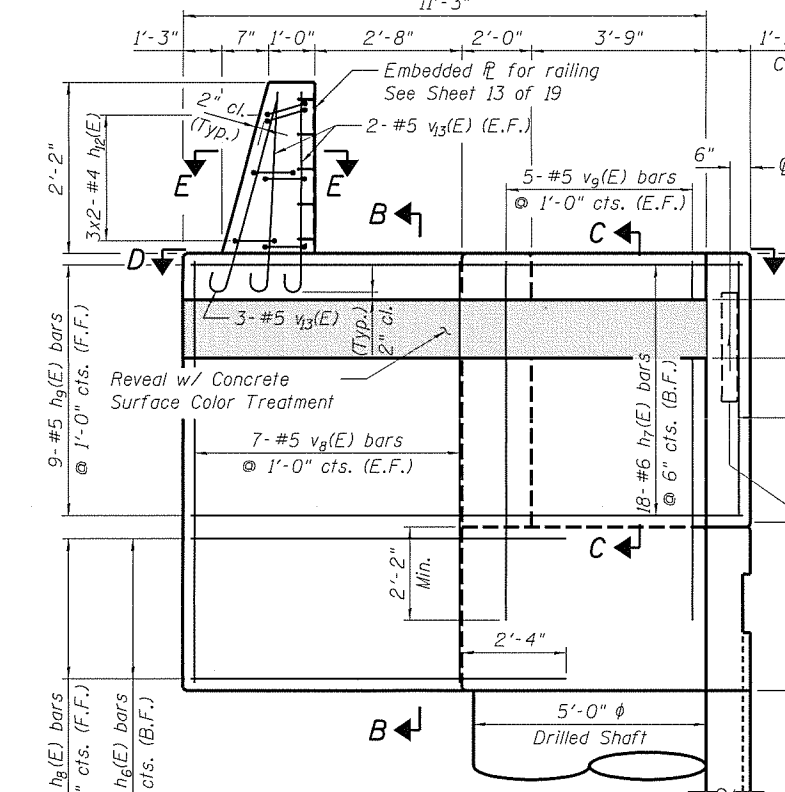
© Copyright Hanson Professional Services Inc. 2021



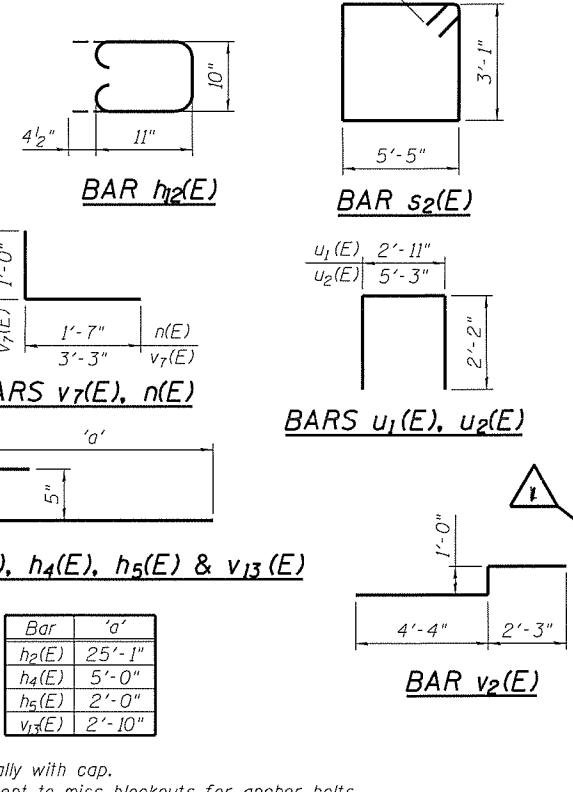
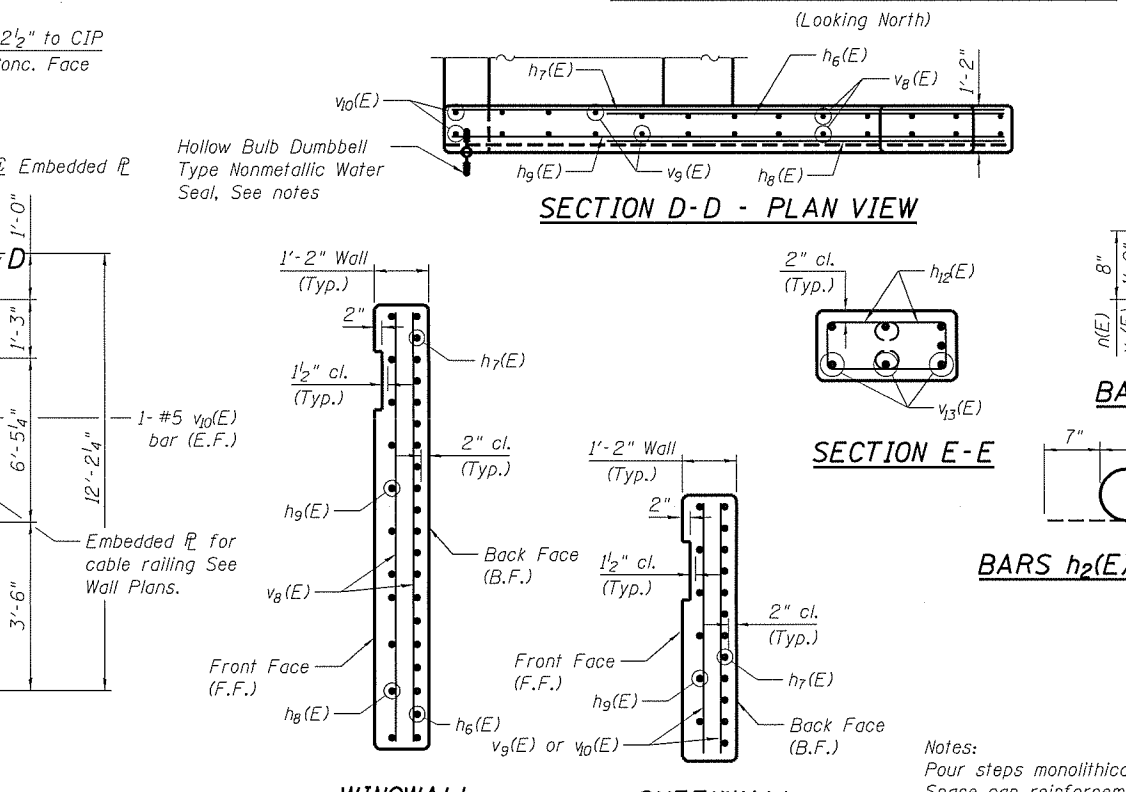
\* Bars epoxy grouted shall have an embedment sufficient to develop 1.25 times the full capacity of the reinforcement bar.

\*\* Concrete wall face shall be cast vertically. Thickness of wall may vary due to abutment deflection. The Min. wall thickness shall be 11 1/2".

**SECTION A-A**



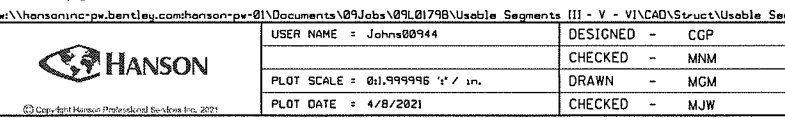
**ELEVATION - C.I.P. CONCRETE FACE**



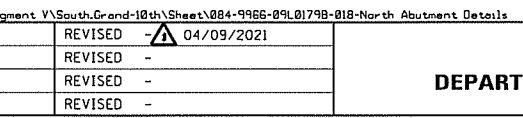
**BILL OF MATERIAL**

Bar	No.	Size	Length	Shape
h1(E)	12	#5	25'-1"	—
h2(E)	12	#5	25'-8"	—
h3(E)	8	#5	1'-9"	—
h4(E)	6	#5	5'-7"	—
h5(E)	4	#5	2'-7"	—
h6(E)	7	#6	7'-10"	—
h7(E)	18	#6	12'-0"	—
h8(E)	4	#5	7'-10"	—
h9(E)	9	#5	12'-0"	—
h10(E)	38	#6	22'-0"	—
h11(E)	38	#6	28'-8"	—
h12(E)	6	#4	3'-5"	□
n(E)	248	#4	2'-3"	L
p1(E)	14	#8	47'-8"	—
p2(E)	8	#5	47'-8"	—
s1	448	#6	15'-2"	○
s2(E)	59	#6	18'-4"	□
u1(E)	10	#5	7'-3"	U
u2(E)	8	#5	9'-7"	U
v1	192	#18	38'-10"	—
v2(E)	82	#5	7'-7"	—
v3(E)	41	#5	6'-8"	—
v4(E)	9	#5	9'-1"	—
v5(E)	5	#5	10'-7"	—
v6(E)	8	#5	9'-7"	—
v7(E)	30	#6	4'-3"	—
v8(E)	14	#5	11'-7"	—
v9(E)	10	#5	10'-9"	—
v10(E)	2	#5	8'-1"	—
v11(E)	98	#5	17'-5"	—
v13(E)	7	#5	3'-5"	—

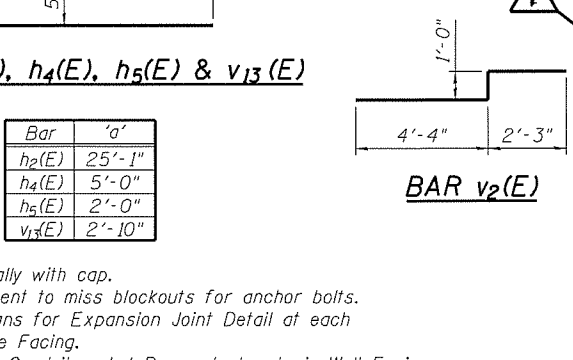
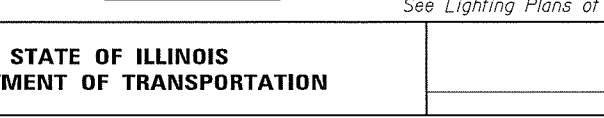
**ELEVATION - TYPICAL END VIEW**



**WINGWALL SECTION B-B**



**CHEEKWALL SECTION C-C**

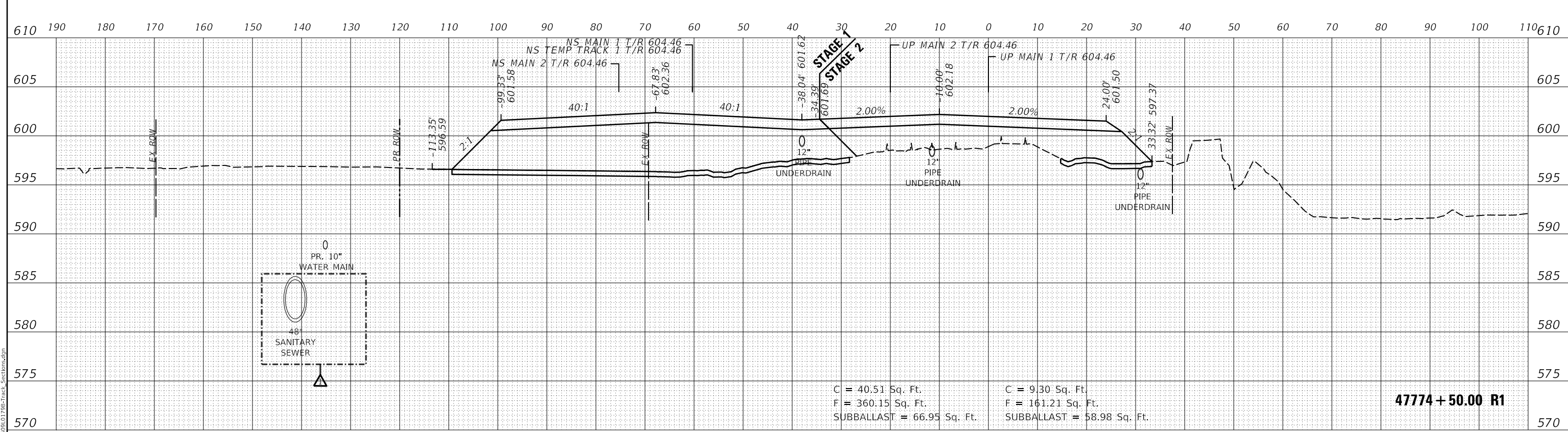


Bar	'a'
h2(E)	25'-1"
h4(E)	5'-0"
h5(E)	2'-0"
v13(E)	2'-10"

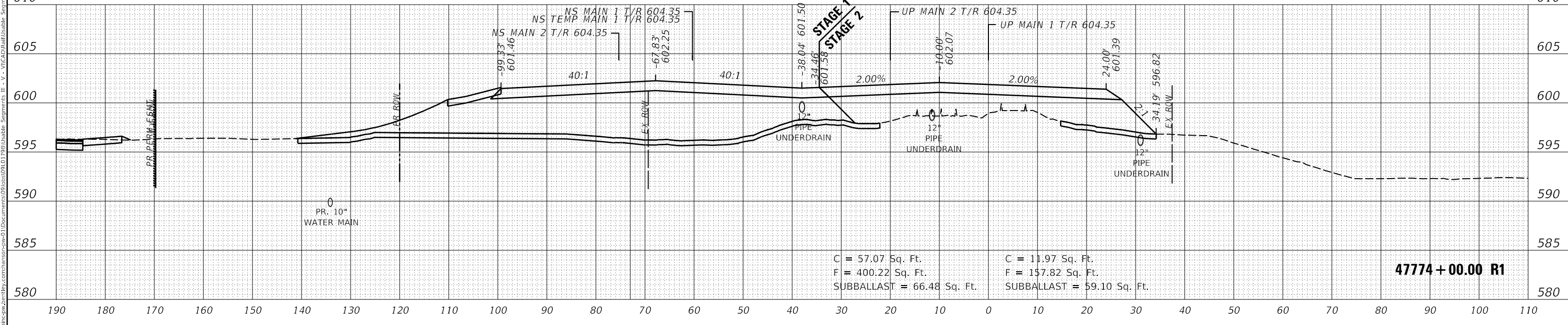
Notes:  
 Pour steps monolithically with cap.  
 Space cap reinforcement to miss blockouts for anchor bolts.  
 See Retaining Wall Plans for Expansion Joint Detail at each end of C.I.P. Concrete Facing.  
 See Lighting Plans of Conduit and J-Box embedments in Wall Facing.

Structure Excavation	Cu. Yds.	239
Concrete Structures	Cu. Yds.	92.8
Form Liner	Sq. Ft.	747
Textured Surface		
Reinforcement Bars	Pound	111610
Reinforcement Bars, Epoxy Coated	Pound	11930
Drilled Shaft in Soil	Cu. Yds.	102.9
Drilled Shaft in Rock	Cu. Yds.	89.5
Secant Lagging	Cu. Ft.	708
Concrete Sealer	Sq. Ft.	1393
Concrete Surface Color Treatment	Sq. Ft.	74
Crosshole Sonic	Foot	314
Logging Access Ducts		

DATE	
BY	
SURVEYED	
PLOTTED	
TEMPLATE	
NOTE BOOK	
AREAS CHECKED	
NO.	



DATE	
BY	
SURVEYED	
PLOTTED	
TEMPLATE	
NOTE BOOK	
AREAS CHECKED	
NO.	



FINAL  
MODEL SHEET 9  
FILE NAME: p:\hanson\proj\springfield\com\hanson\proj\springfield\09L0179B\Track\_Segments\_III - V - V1\CAD\Rail\Usable\_Segment\_V1Sheet09L0179B-Track\_Segments.dgn



USER NAME = Pop00275  
DESIGNED - GCN  
DRAWN - DJP  
PLOT SCALE = 20.00' / in.  
PLOT DATE = 4/7/2021

DESIGNED - GCN  
DRAWN - DJP  
CHECKED - GCN  
DATE - 1/18/2021

REVISED 4/8/2021  
REVISED -  
REVISED -  
REVISED -

STATE OF ILLINOIS  
DEPARTMENT OF TRANSPORTATION

SPRINGFIELD RAIL IMPROVEMENTS PROJECT  
SPRINGFIELD, SANGAMON COUNTY, ILLINOIS  
CROSS SECTIONS - TRACK - 9

F.A. RTE.	SECTION	COUNTY	TOTAL SHEETS	SHEET NO.
*	19-00488-00-BR	SANGAMON	347	313
	09L0179B			CONTRACT NO. 93747

SCALE: SHEET 9 OF 43 SHEETS STA. 47774+00.00 R1 TO STA. 47774+50.00 R1